

### MTT MDA-MB-231

RES/ $\mu$ M	0	DMSO	20	60	100	140	180
OD value MDA-MB-231	0.682	0.828	0.544	0.401	0.4	0.186	0.134
	0.821	0.766	0.534	0.532	0.34	0.189	0.143
	0.651	0.571	0.689	0.4	0.268	0.183	0.138
average	0.718	0.722	0.589	0.444	0.336	0.186	0.138
ratio	1	1.005	0.82	0.62	0.47	0.26	0.19
RES/ $\mu$ M	0	DMSO	20	60	100	140	180
OD value MDA-MB-231	0.565	0.523	0.544	0.351	0.279	0.183	0.125
	0.527	0.567	0.504	0.325	0.273	0.212	0.151
	0.531	0.508	0.509	0.369	0.264	0.198	0.101
average	0.541	0.533	0.519	0.348	0.272	0.198	0.126
ratio	1	0.98	0.96	0.64	0.5	0.37	0.233
RES/ $\mu$ M	0	DMSO	20	60	100	140	180
OD value MDA-MB-231	1.013	1.017	0.861	0.669	0.502	0.195	0.143
	1.147	1.032	1.095	0.589	0.509	0.262	0.165
	1.005	0.995	1.203	0.479	0.411	0.221	0.169
average	1.055	1.015	1.053	0.579	0.474	0.226	0.159
ratio	1	0.96	1	0.55	0.45	0.21	0.15

### MTT MCF-7

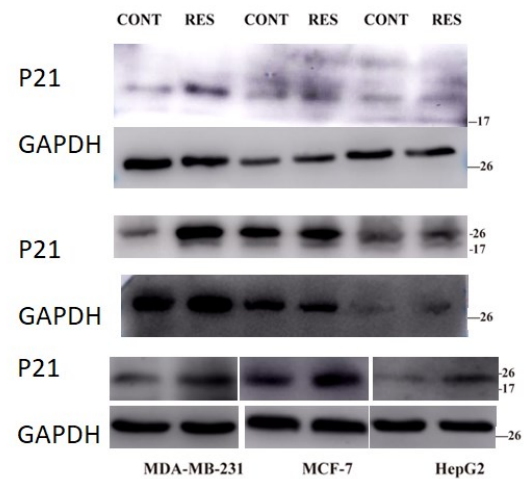
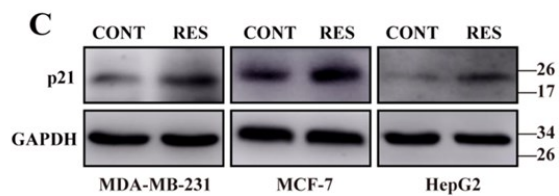
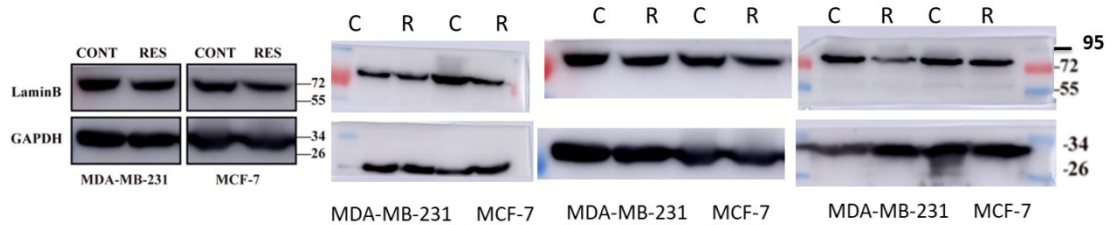
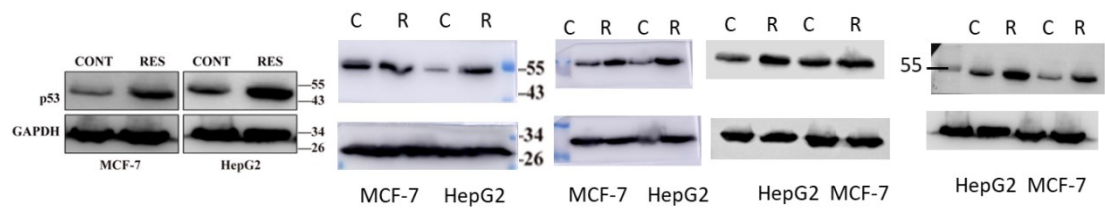
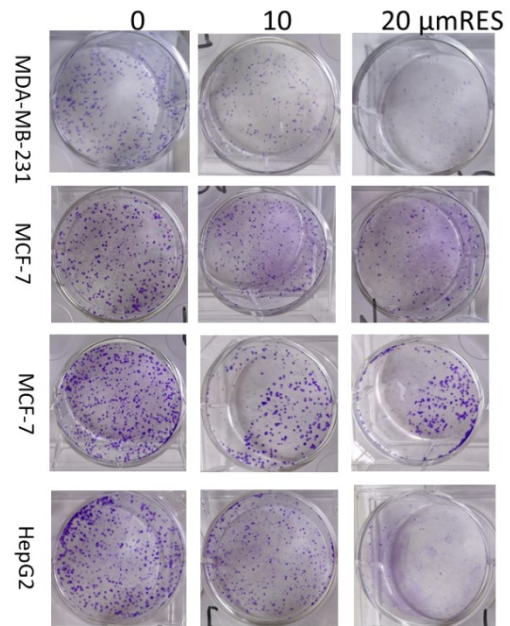
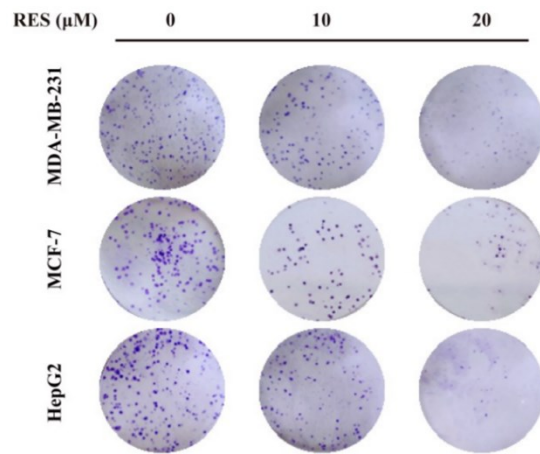
RES/ $\mu$ M	0	DMSO	20	60	100	140	180
OD value MCF-7	0.663	0.61	0.675	0.393	0.288	0.206	0.204
	0.765	0.643	0.659	0.473	0.342	0.276	0.156
	0.752	0.715	0.607	0.439	0.354	0.227	0.174
average	0.727	0.656	0.647	0.435	0.328	0.236	0.178
ratio	1	0.90	0.89	0.60	0.45	0.33	0.25
RES/ $\mu$ M	0	DMSO	20	60	100	140	180
OD value MCF-7	0.752	0.716	0.772	0.581	0.423	0.288	0.206
	0.704	0.737	0.602	0.556	0.398	0.239	0.187
	0.737	0.74	0.687	0.486	0.406	0.218	0.242
average	0.731	0.731	0.687	0.541	0.409	0.248	0.212
ratio	1	1	0.94	0.74	0.56	0.34	0.29
RES/ $\mu$ M	0	DMSO	20	60	100	140	180
OD value MCF-7	0.752	0.798	0.700	0.542	0.356	0.288	0.206
	0.890	0.727	0.670	0.506	0.468	0.249	0.267
	0.837	0.902	0.709	0.686	0.439	0.306	0.220
average	0.826	0.809	0.693	0.578	0.421	0.281	0.231
ratio	1	0.98	0.84	0.7	0.51	0.34	0.28

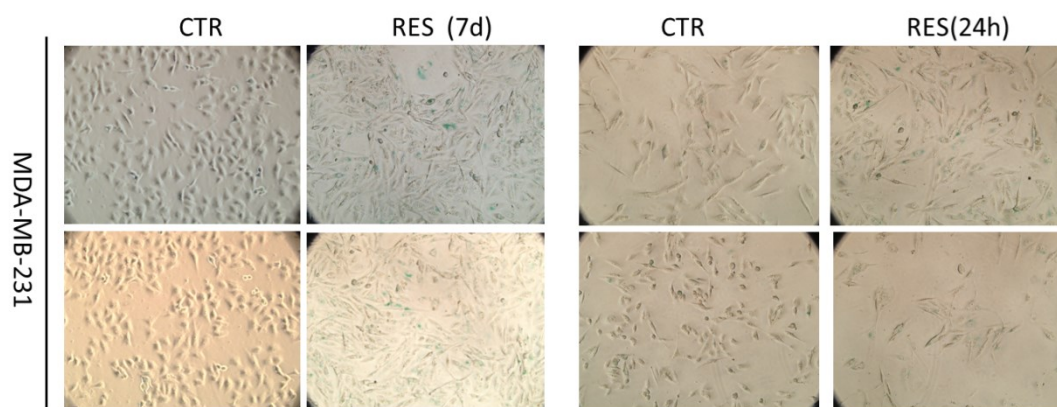
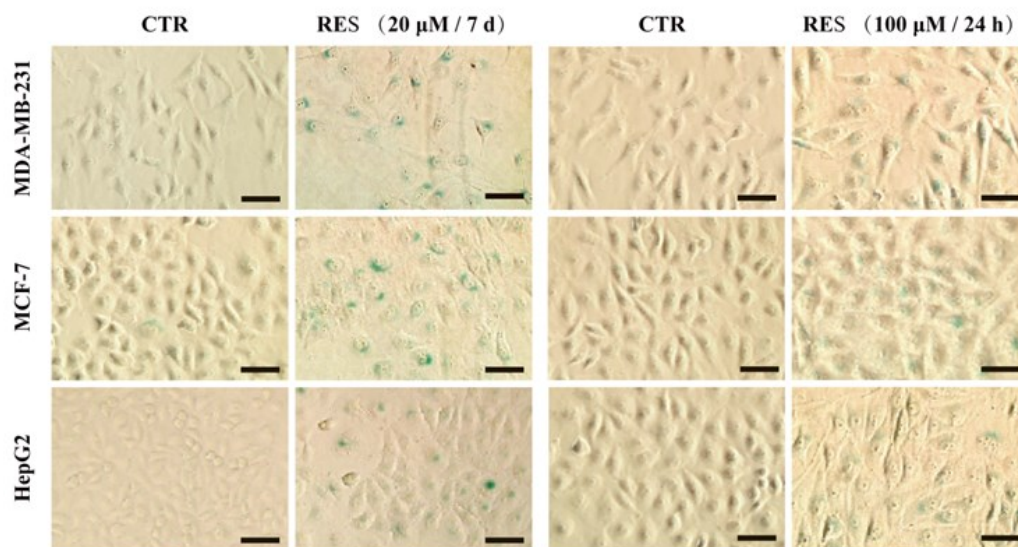
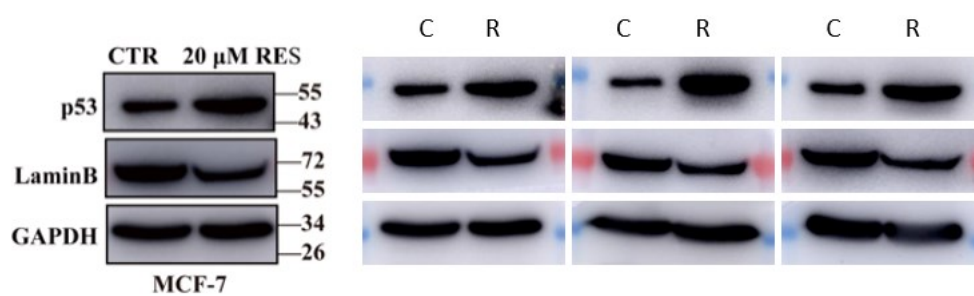
## MTT HepG2

RES/ $\mu$ M	0	DMSO	20	60	100	140	180
OD value HepG2	1.192	1.029	0.988	0.7	0.425	0.358	0.201
	1.057	1.085	0.948	0.738	0.536	0.367	0.211
	1.126	1.06	1.103	0.722	0.491	0.355	0.263
average	1.125	1.058	1.013	0.72	0.484	0.36	0.225
ratio	1	0.94	0.9	0.64	0.43	0.32	0.2
RES/ $\mu$ M	0	DMSO	20	60	100	140	180
OD value HepG2	0.777	0.749	0.628	0.458	0.366	0.251	0.155
	0.741	0.706	0.738	0.496	0.324	0.211	0.152
	0.759	0.732	0.842	0.48	0.357	0.222	0.149
average	0.759	0.729	0.736	0.478	0.349	0.228	0.152
ratio	1	0.96	0.97	0.63	0.46	0.3	0.2
RES/ $\mu$ M	0	DMSO	20	60	100	140	180
OD value HepG2	0.908	0.987	0.787	0.628	0.445	0.262	0.167
	0.887	0.896	0.709	0.692	0.44	0.302	0.201
	0.875	0.799	0.694	0.708	0.423	0.318	0.112
average	0.89	0.894	0.73	0.676	0.436	0.294	0.16
ratio	1	1	0.82	0.76	0.49	0.33	0.18

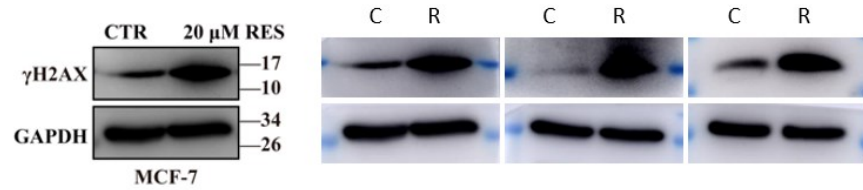
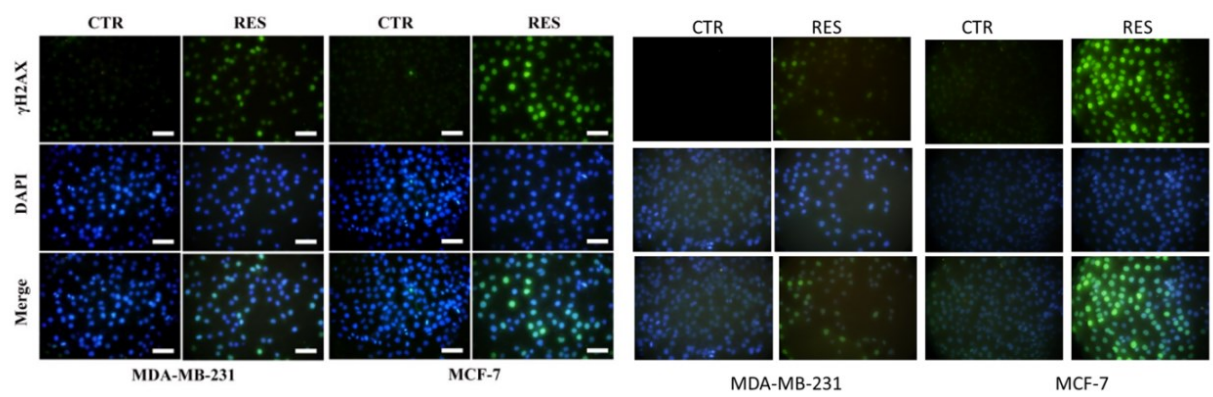
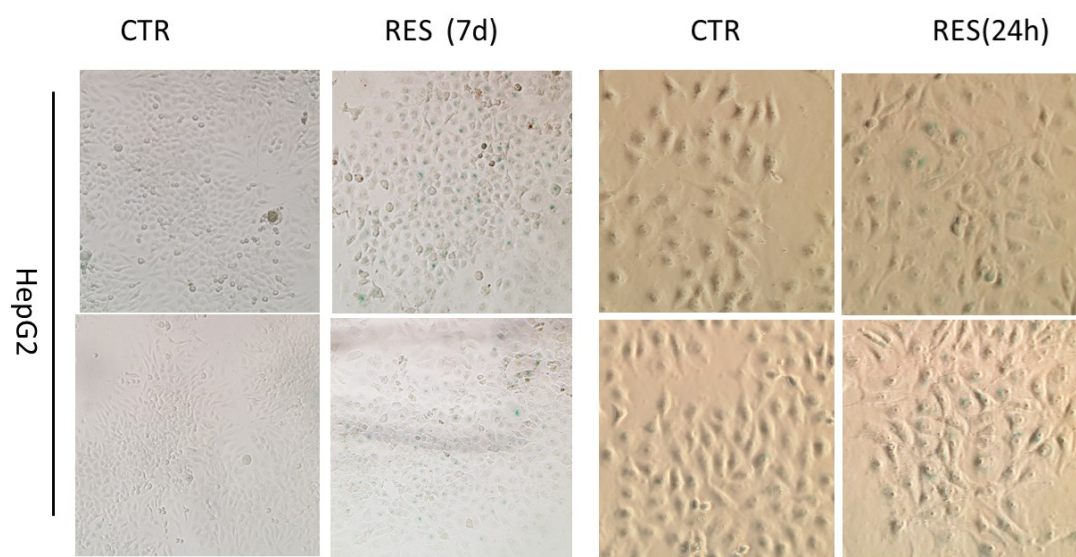
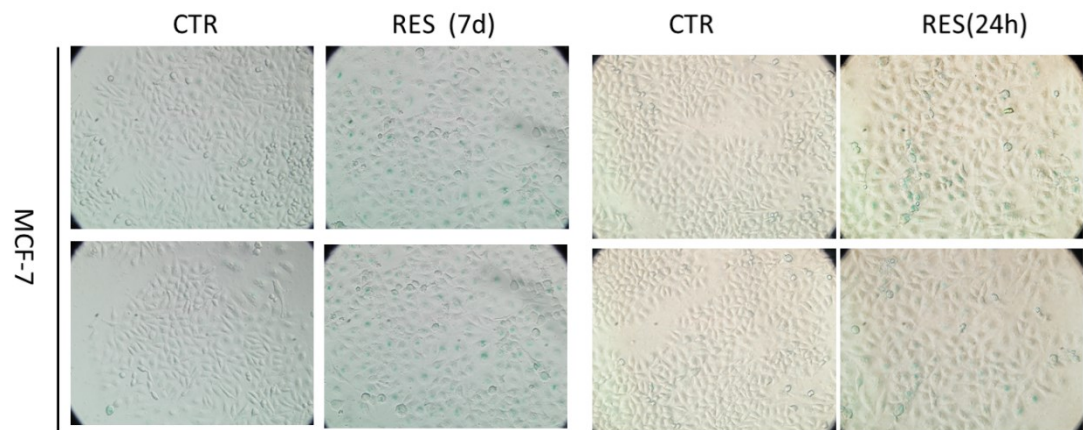
## MTT WRL68

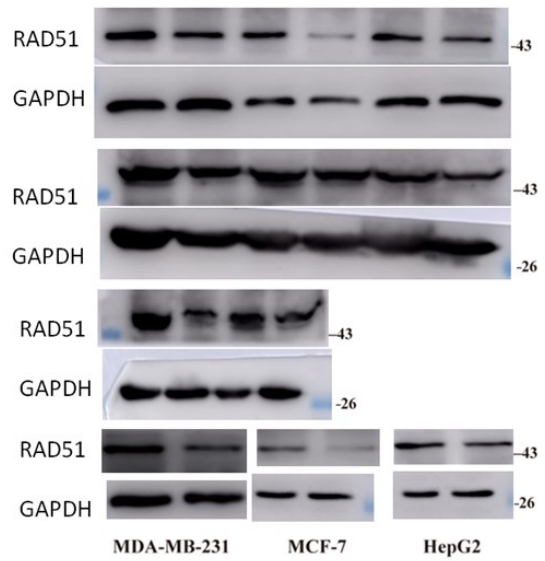
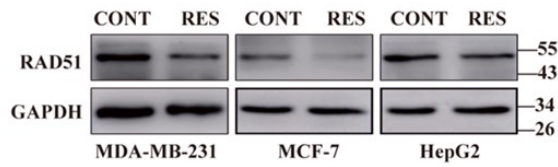
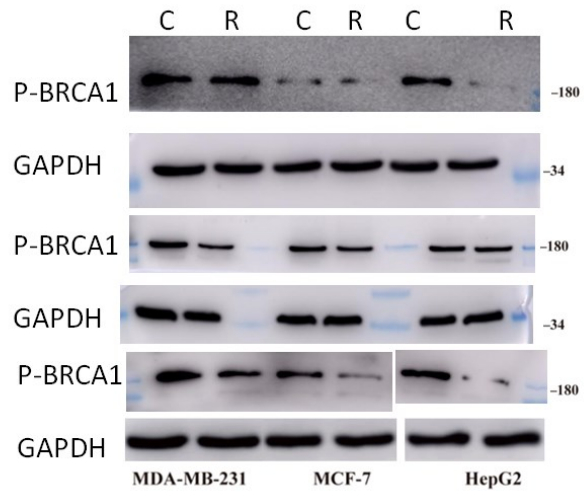
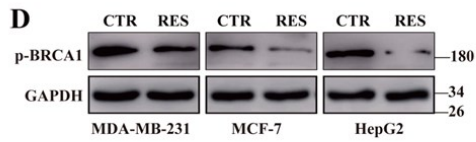
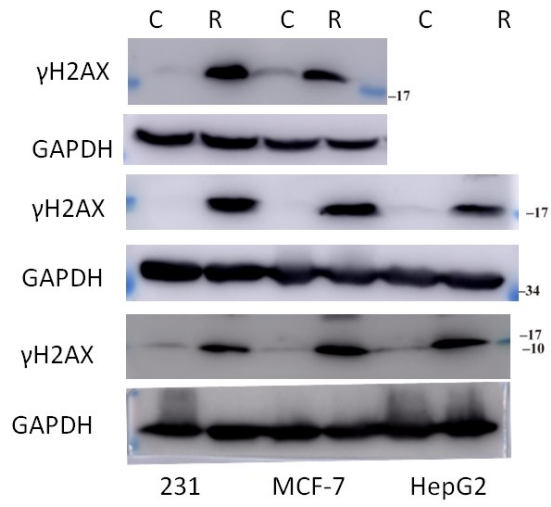
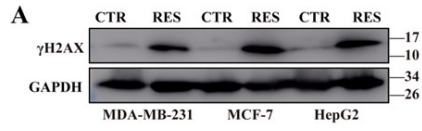
RES/ $\mu$ M	0	DMSO	20	60	100	140	180
OD value WLR68	0.471	0.429	0.53	0.402	0.37	0.303	0.25
	0.493	0.449	0.525	0.374	0.318	0.302	0.264
	0.426	0.466	0.46	0.375	0.342	0.293	0.273
	0.494	0.429	0.496	0.379	0.335	0.318	0.259
	0.417	0.411	0.499	0.366	0.309	0.266	0.243
average	0.460	0.437	0.502	0.379	0.335	0.296	0.258
ratio	1	0.95	1.1	0.82	0.73	0.64	0.56
RES/ $\mu$ M	0	DMSO	20	60	100	140	180
OD value WLR68	0.22	0.219	0.249	0.199	0.169	0.164	0.145
	0.249	0.213	0.219	0.306	0.194	0.205	0.16
	0.245	0.225	0.242	0.273	0.247	0.201	0.166
	0.255	0.222	0.218	0.229	0.251	0.175	0.182
average	0.242	0.220	0.232	0.252	0.215	0.186	0.163
ratio	1	0.91	0.96	1.04	0.89	0.77	0.67
RES/ $\mu$ M	0	DMSO	20	60	100	140	180
OD value WLR68	0.723	0.678	0.861	0.708	0.699	0.667	0.479
	0.789	0.874	0.775	0.863	0.704	0.614	0.538
	0.891	0.779	0.815	0.808	0.688	0.618	0.594
average	0.801	0.777	0.817	0.793	0.697	0.633	0.537
ratio	1	0.97	1.02	0.99	0.87	0.79	0.67

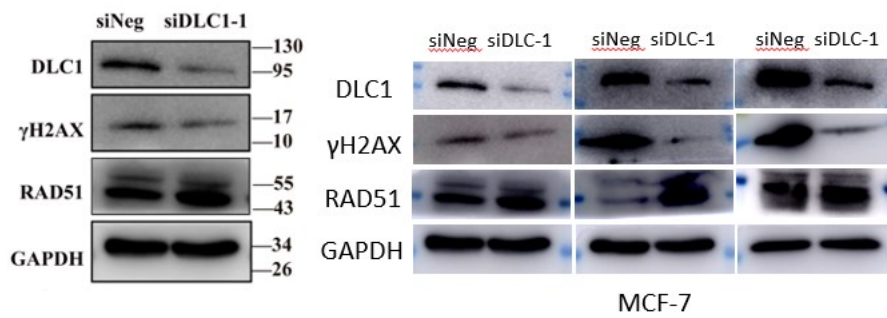
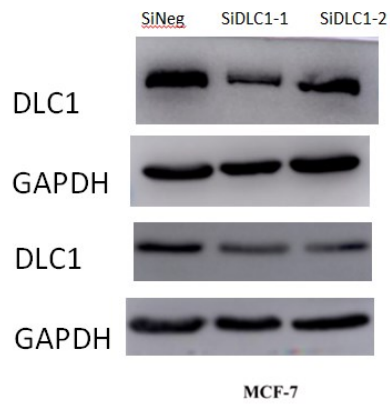
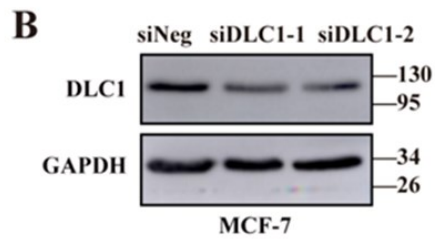
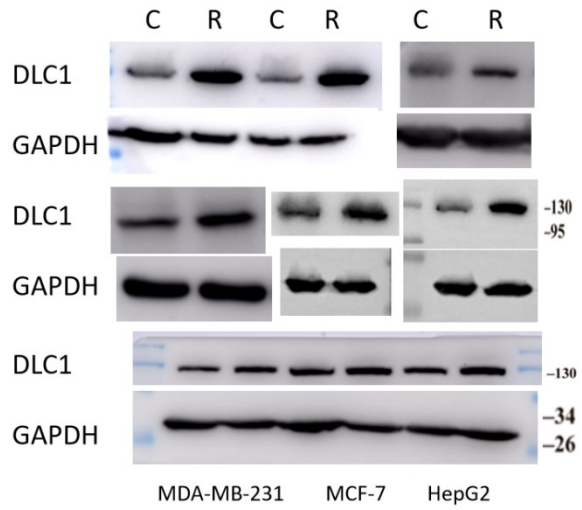
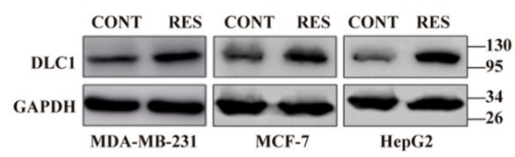




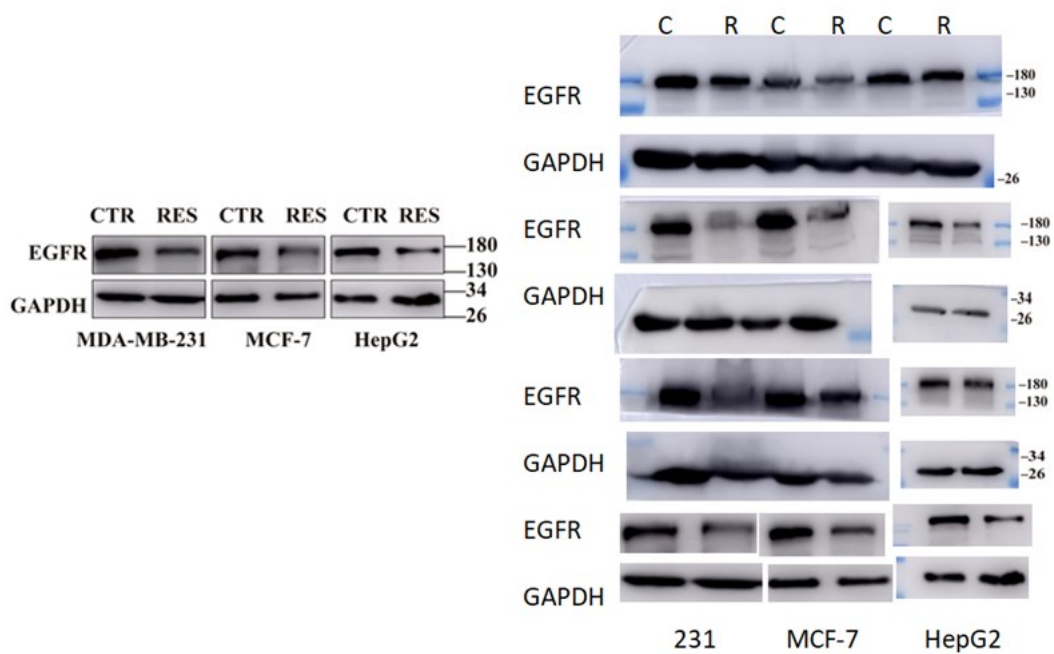
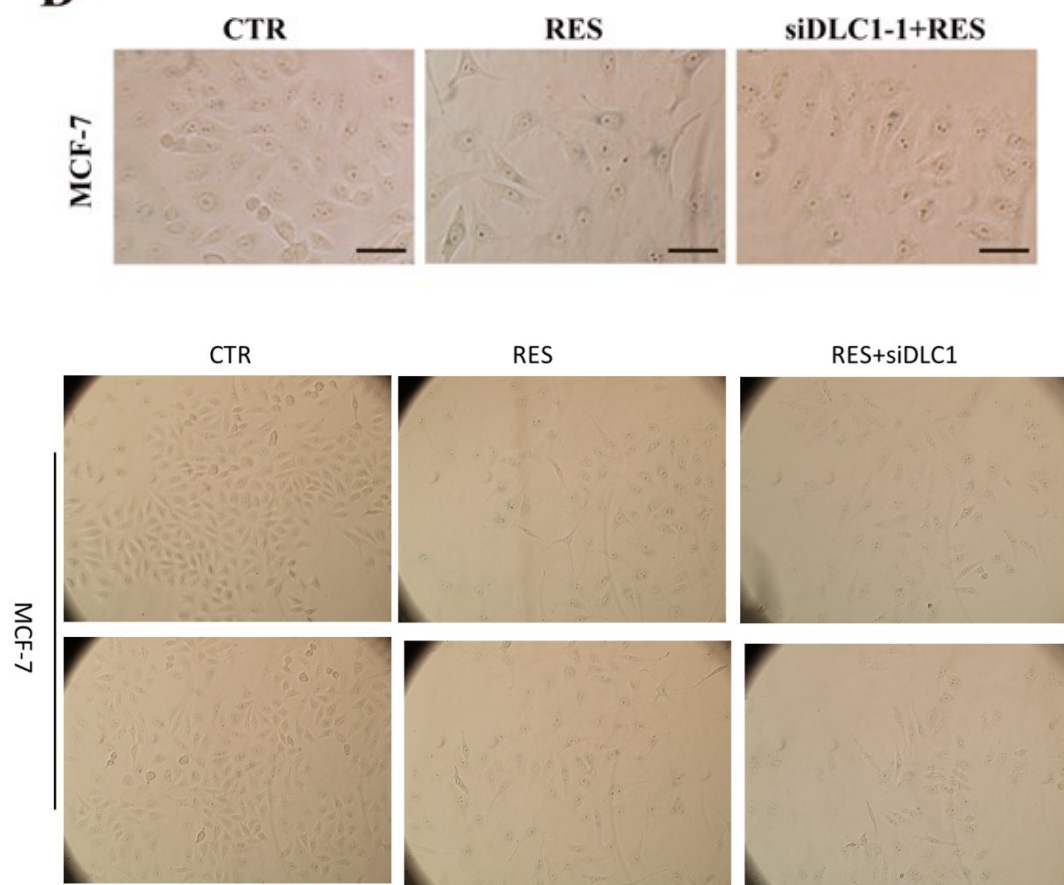




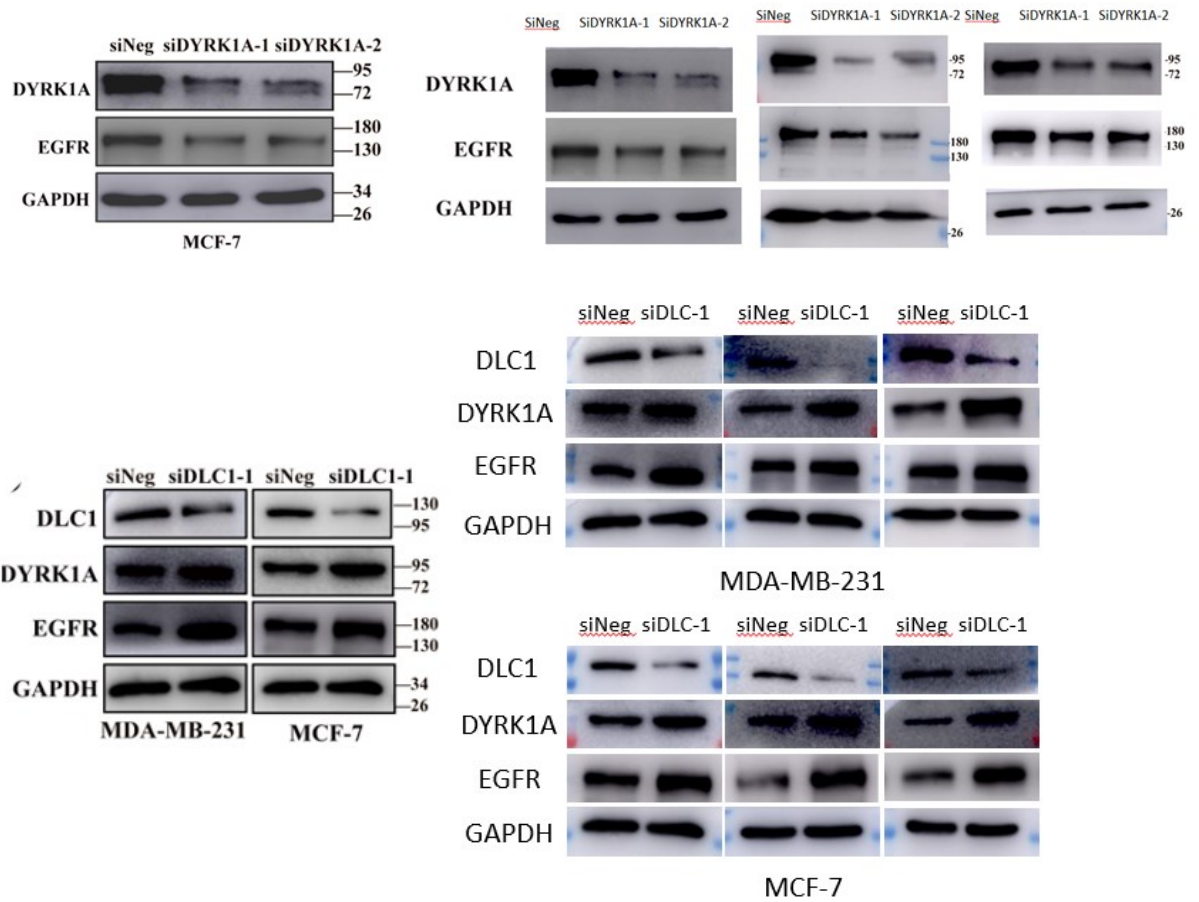
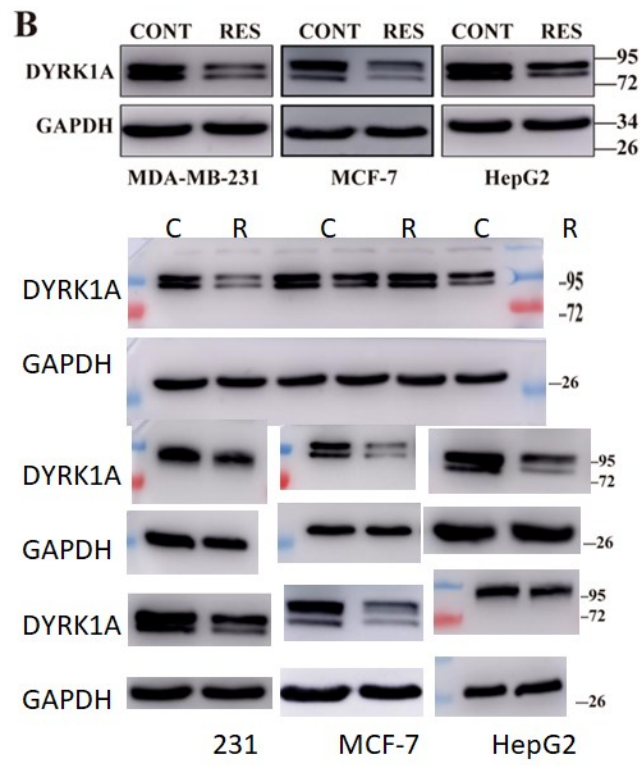


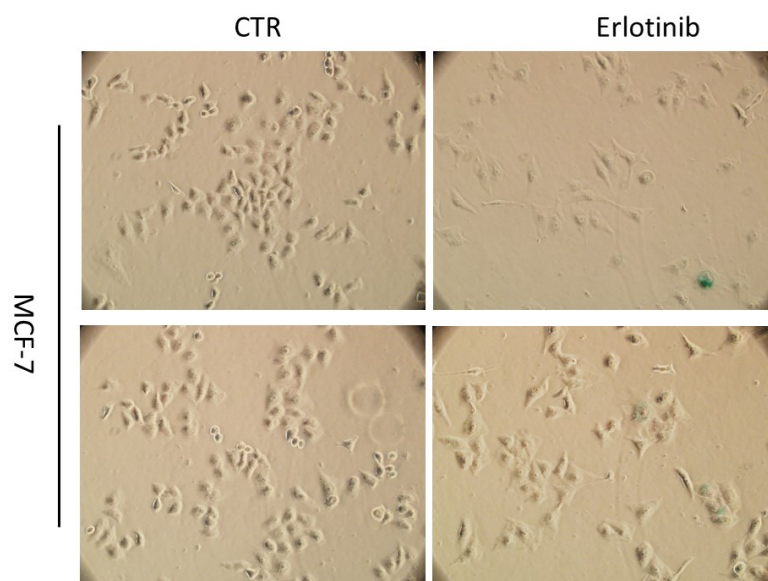
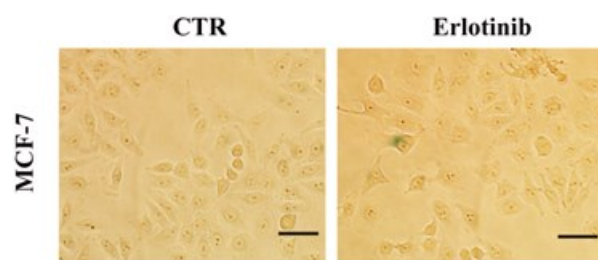
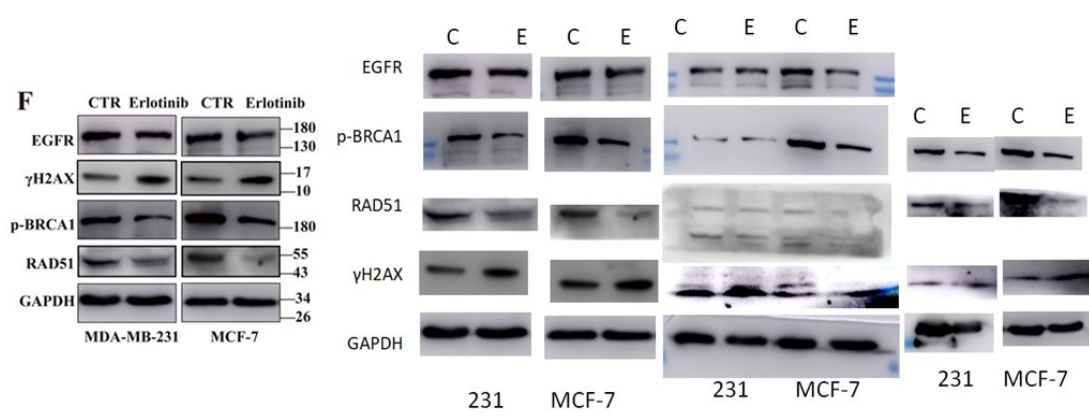


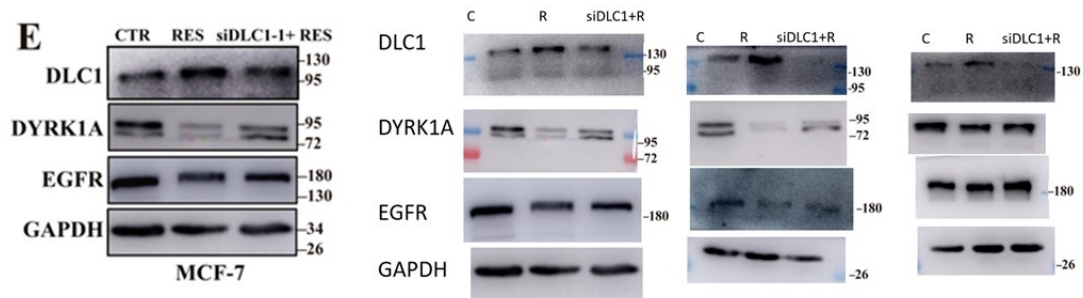
**D**











## ROS MDA-MB-231

	Group	Fluorescence value			Mean fluorescence value	Number of cells/ml/10 <sup>6</sup>	Mean fluorescence value/10 <sup>6</sup>	ratio C:R
1	231C	1875.1	1873.8	1866.6	1871.83	3.07	609.72	1:1.33
	231R	1443.6	1433.3	1559.1	1478.67	1.82	812.45	
2	231C	1009.1	922.75	977.52	969.79	1.5	646.53	1:1.56
	231R	637.3	637.62	633.87	636.26	0.63	1009.94	
3	231C	1037.1	1033.9	1024.7	1031.90	1.495	690.23	1:1.49
	231R	564.64	658.61	660.07	627.77	0.61	1029.14	

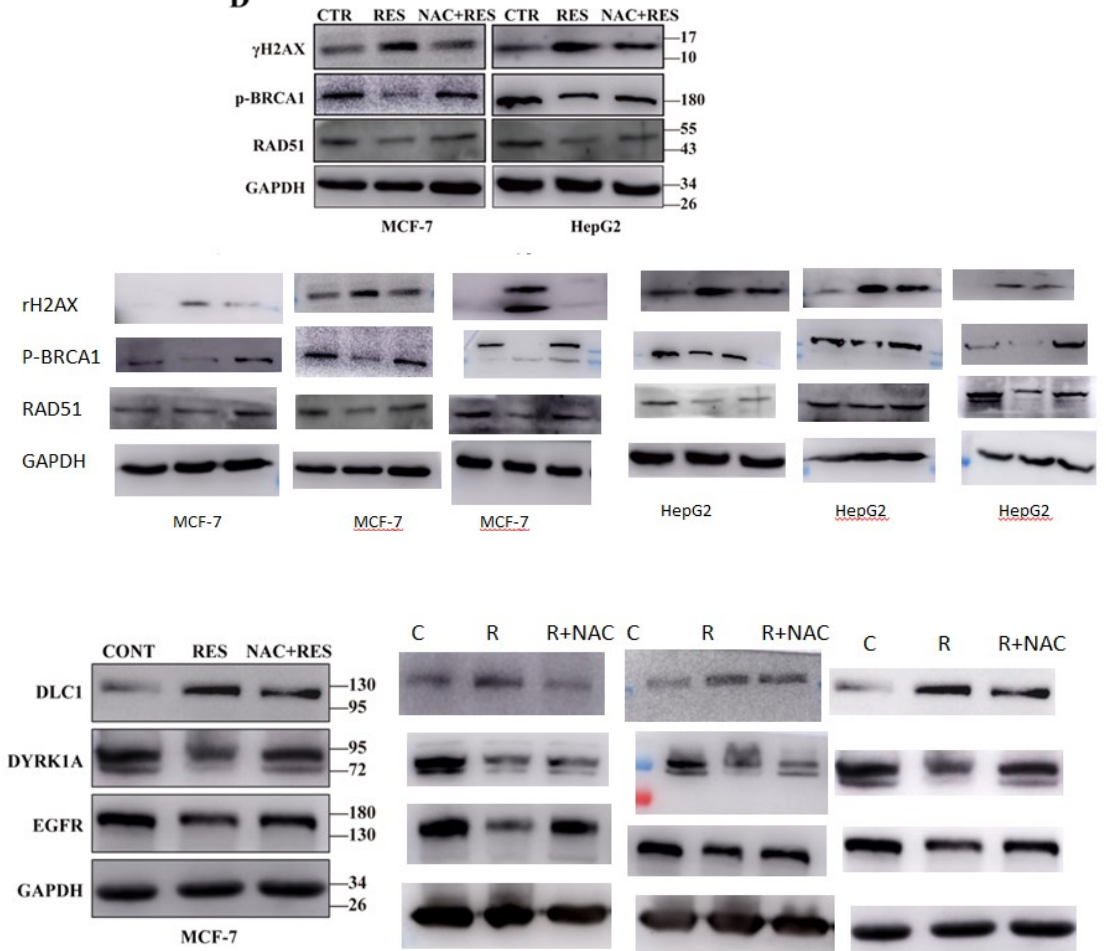
## ROS MCF-7

	Group	Fluorescence value			Mean fluorescence value	Number of cells/ml/10 <sup>6</sup>	Mean fluorescence value/10 <sup>6</sup>	ratio C:R
1	MCF-7C	1310.2	1317.5	1499.8	1375.83	2.8	491.37	1:1.26
	MCF-7R	887.87	886.22	1206.32	993.47	1.6	620.92	
2	MCF-7C	930.53	945.73	969.67	948.64	2	474.32	1:1.90
	MCF-7R	1018.4	1024.2	1032.4	1025.00	1.14	899.12	
3	MCF-7 C	1574.1	1541.9	1535.6	1550.53	6.16	251.71	1:98
	MCF-7 R	1658.2	1657.7	1790.7	1702.20	3.42	497.72	

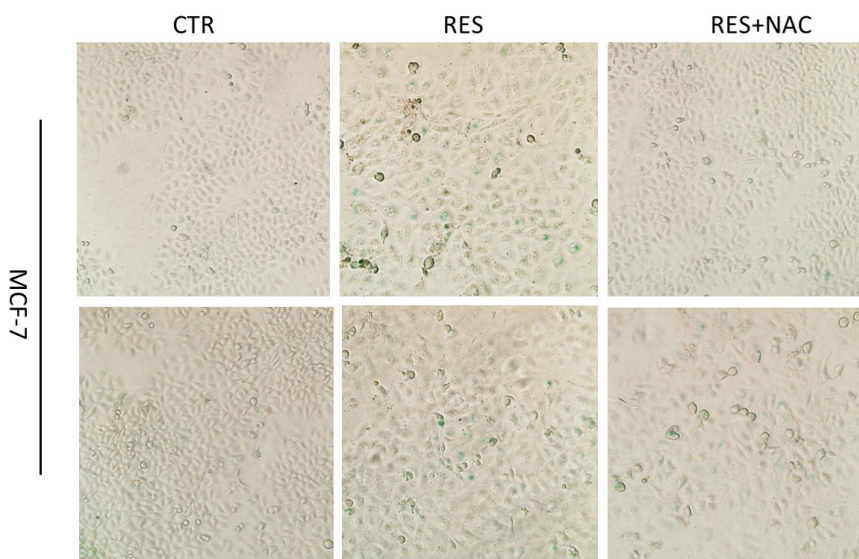
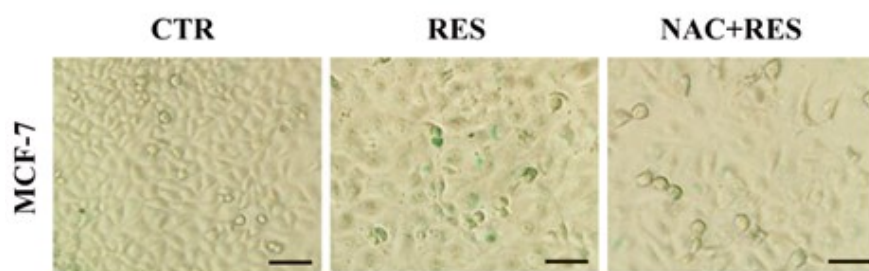
ROS      HepG2

	Group	Fluorescence value			Mean fluorescence value	Number of cells/ml/10 <sup>6</sup>	Mean fluorescence value/10 <sup>6</sup>	ratio C:R
1	HepG2 C	227.22	211.73	222.81	220.59	2.56	86.17	1:1.63
	HepG2 R	195.81	198.6	259.37	217.93	1.55	140.60	
2	HepG2 C	207.7	209.23	197.84	204.92	3	68.31	1:1.76
	HepG2 R	190.51	235.23	225.19	216.98	1.8	120.54	
3	HepG2 C	983.4	993.75	989.52	988.89	9.8	100.91	1:1.39
	HepG2 R	1068.7	1052.3	1043.9	1054.97	7.5	140.66	

**D**



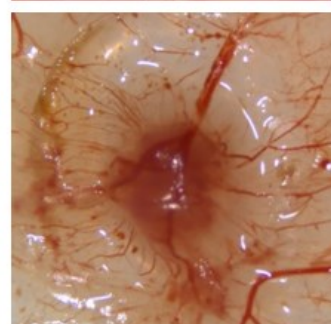
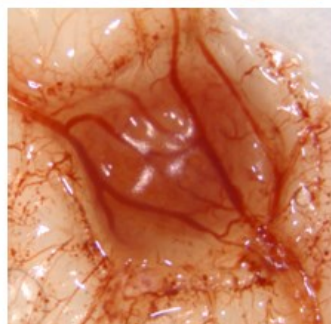
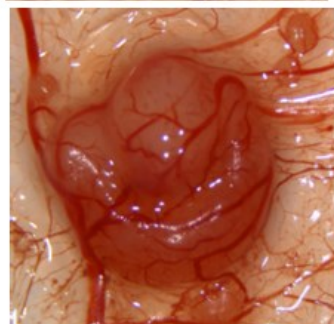
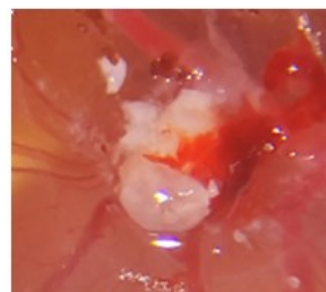
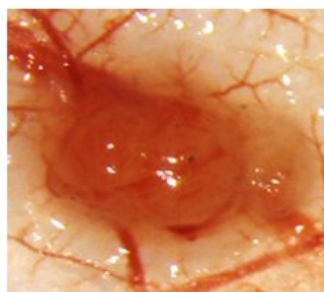
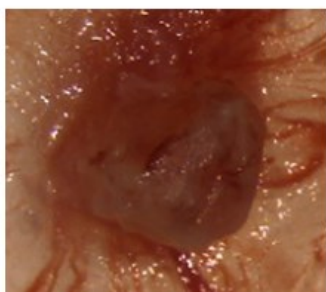
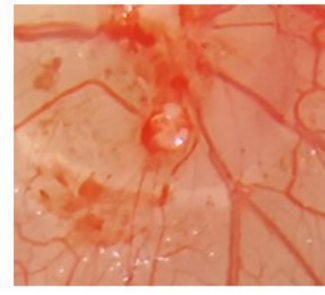
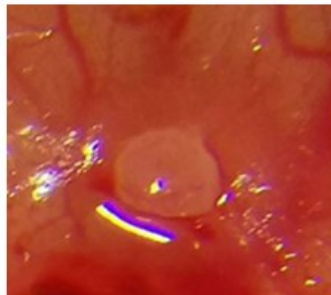
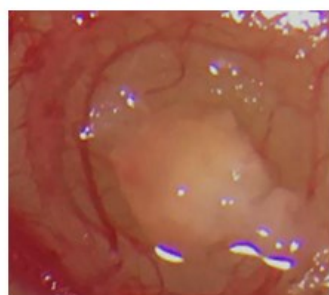
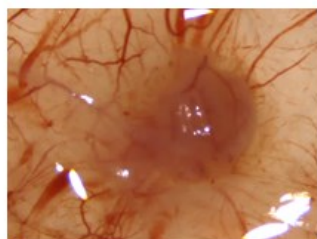
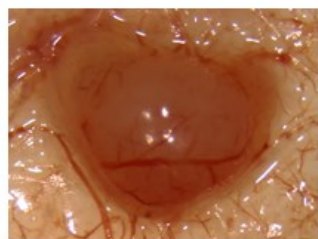
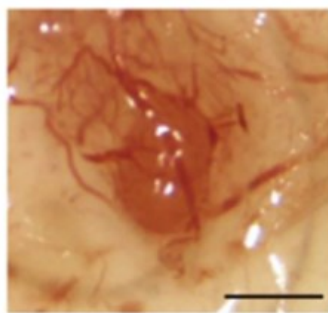
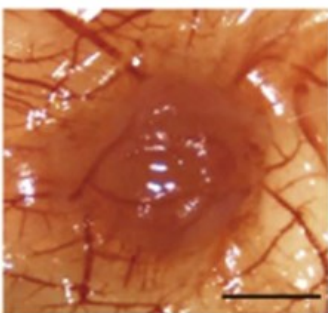
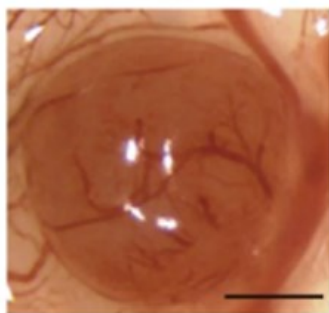


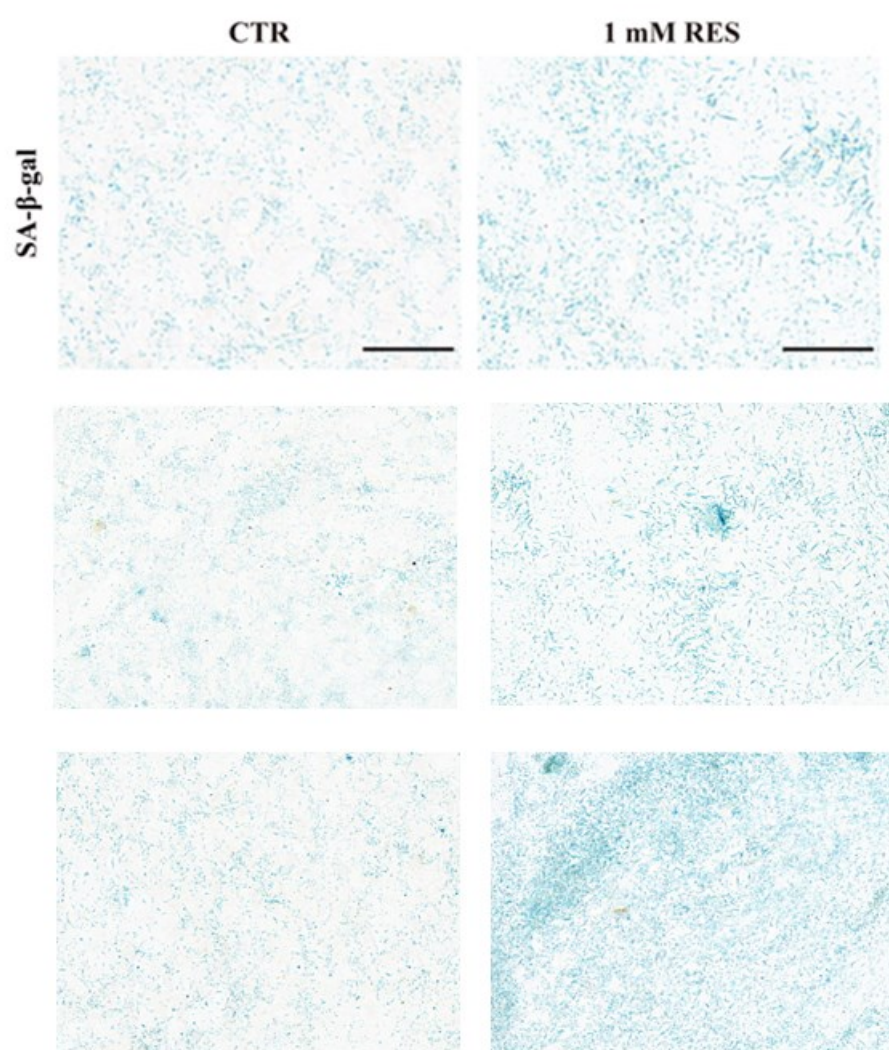


**CTR**

**0.5 mM RES**

**1 mM RES**







C

R

DLCI

