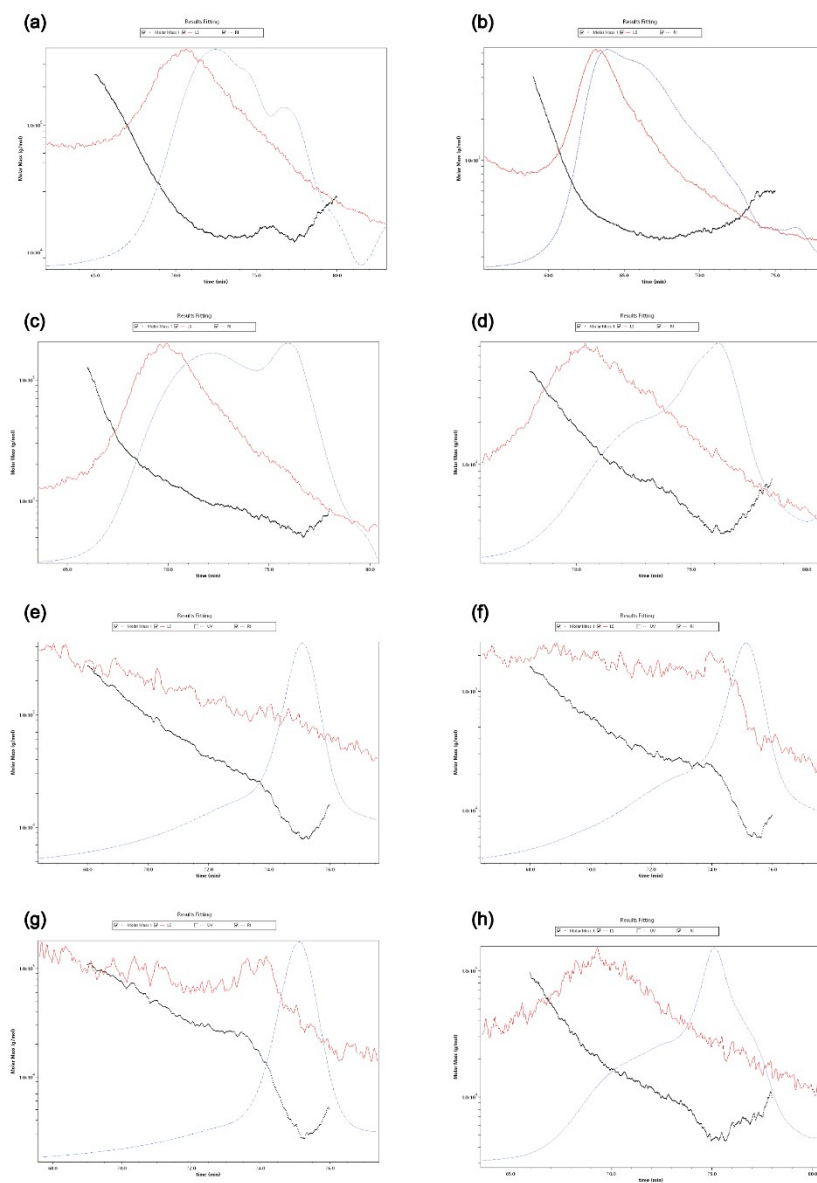


## Supplementary materials



**Figure S1. Changes of high-performance size exclusion chromatograms of SGPs (a. SGP, b. SGP-S, c. SGP-G, d. SGP-I, e. SGPI-6 h, f. SGPI-12 h, g. SGPI-24 h, h. SGPI-48 h)**  
**SGP-S**, saliva digestion; **SGP-G**, saliva-gastric digestion; **SGP-I**, saliva-gastrointestinal digestion, respectively. **SGPI-6 h**, **SGPI-12 h**, **SGPI-24 h**, and **SGPI-48 h**, SGP-I after *in vitro* fermentation by human fecal microbiota for 6, 12, 24, and 48 h, respectively.

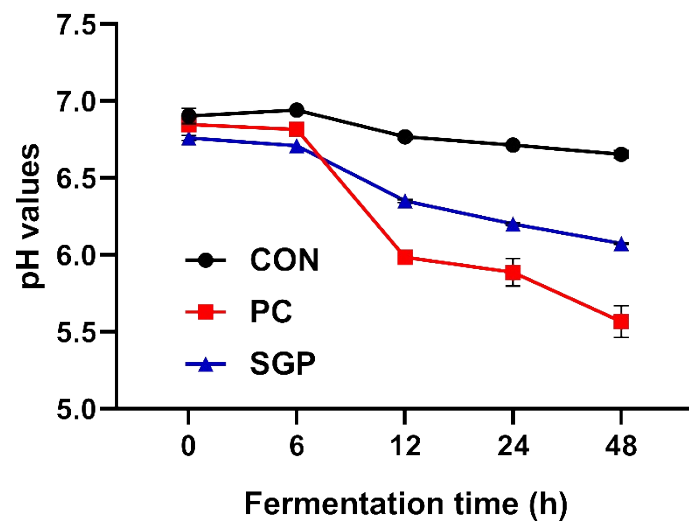


Figure S2. pH value at different time points *in vitro* fermentation