

Supplementary Information

UPLC-ESI-Q-TOF-MS^E -based metabolomics analysis of *Acer mono Sap* and evaluation for osteogenic activity in mouse osteoblast cells

Karthi Natesan^{a,#}, Thimmarayan Srivalli^{b,#}, Harshavardhan Mohan^c, Arul Jayaprakash^b, and
Vaikundamoorthy Ramalingam^{d,e*}

^aSchool of Allied Health Sciences, REVA University, Bengaluru, India

^bDepartment of Chemistry, Research Institute of Physics and Chemistry,
Jeonbuk National University, Jeonju 54896, Republic of Korea.

^cPG and Research Department of Biochemistry, Sacred Heart College (Autonomous),
Tirupattur - 635601, Tamil Nadu, India

(Affiliated to Thiruvallur University, Serkkadu, Vellore – 632115, Tamil Nadu, India)

^dCentre for Natural Products & Traditional Knowledge

CSIR-Indian Institute of Chemical Technology, Hyderabad, India

^eAcademy of Scientific and Innovative Research (AcSIR), Ghaziabad – 201002, India

Equal contribution.

*Corresponding Email: ramalingam@iict.res.in

Table S1 List of forward and reverse primers used in the gene expression studies by qRT-PCR analysis

Gene	Forward primer	Reverse primers	Tm
Alkaline Phosphatase	CACAGATTCCCAAAGCACCT	GGGATGGAGGAGAGAAGGTC	55.45/59.5
Osteocalcin	CCTGAGTCTGACAAAGCCTTCA	GCCGGAGTCTGTTCACTACCTT	58.4/60.0
Collagen1 α 1	GCTTCACCTACAGCACCCCTTGT	TGACTGTCTTGCCCCAAGTTC	60.0/58.20
Osteopontin	CCCGGTGAAAGTGACTGATTCT	GATCTGGGTGCAGGCTGTAAA	58.4/58.2
Runx2	GGCACAGACAGAAGCTTGATGA	GAATGCGCCCTAAATCACTGA	58.4/56.2
Osterix	GGAGGTTTCACTCCATTCCA	TAGAAGGAGCAGGGGACAGA	55.4/57.4

Fig. S1

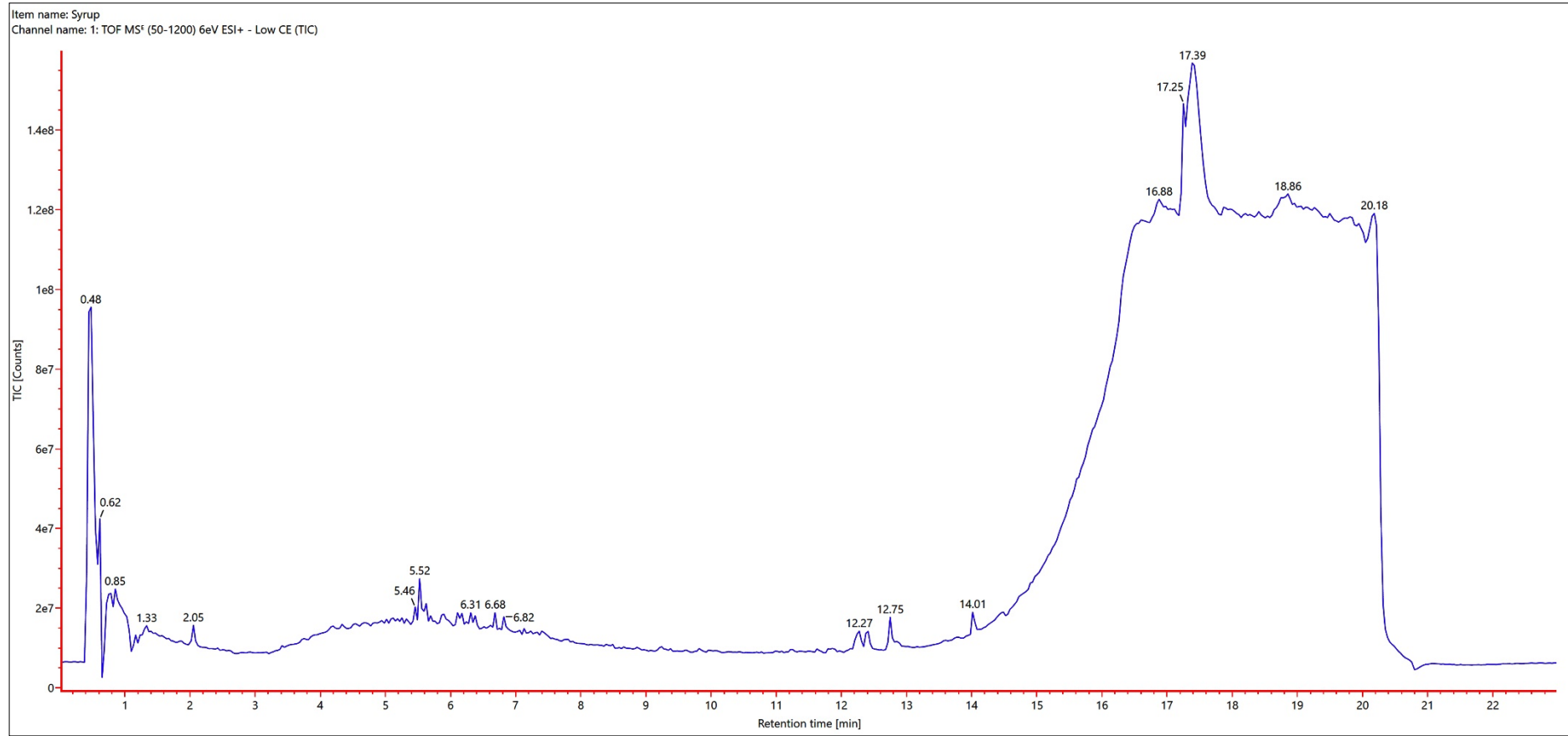
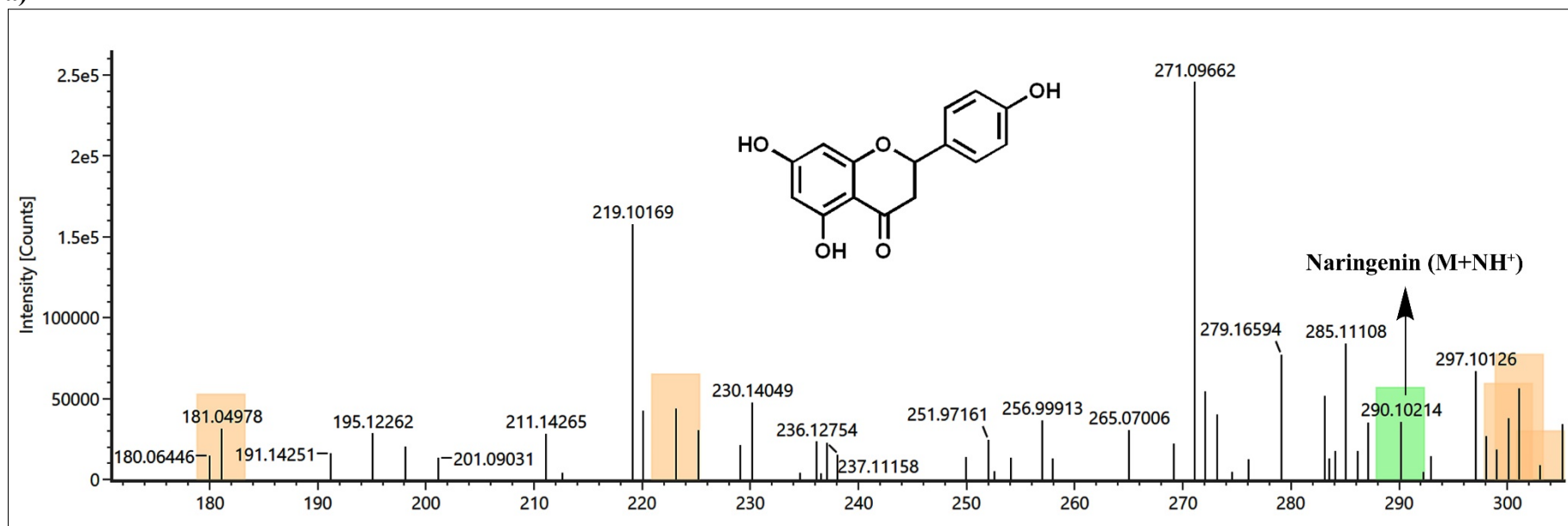


Fig. S2

a)



b)

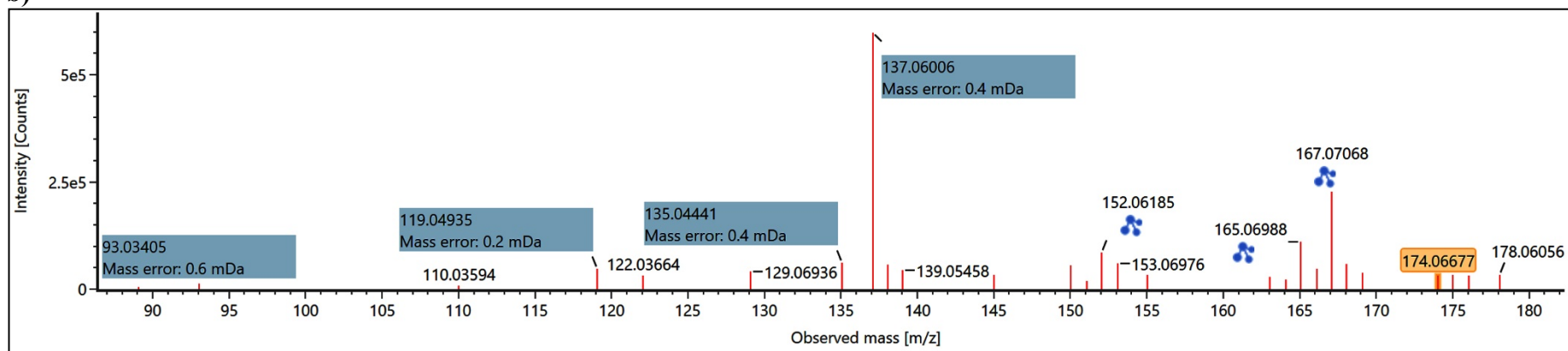


Fig. S3

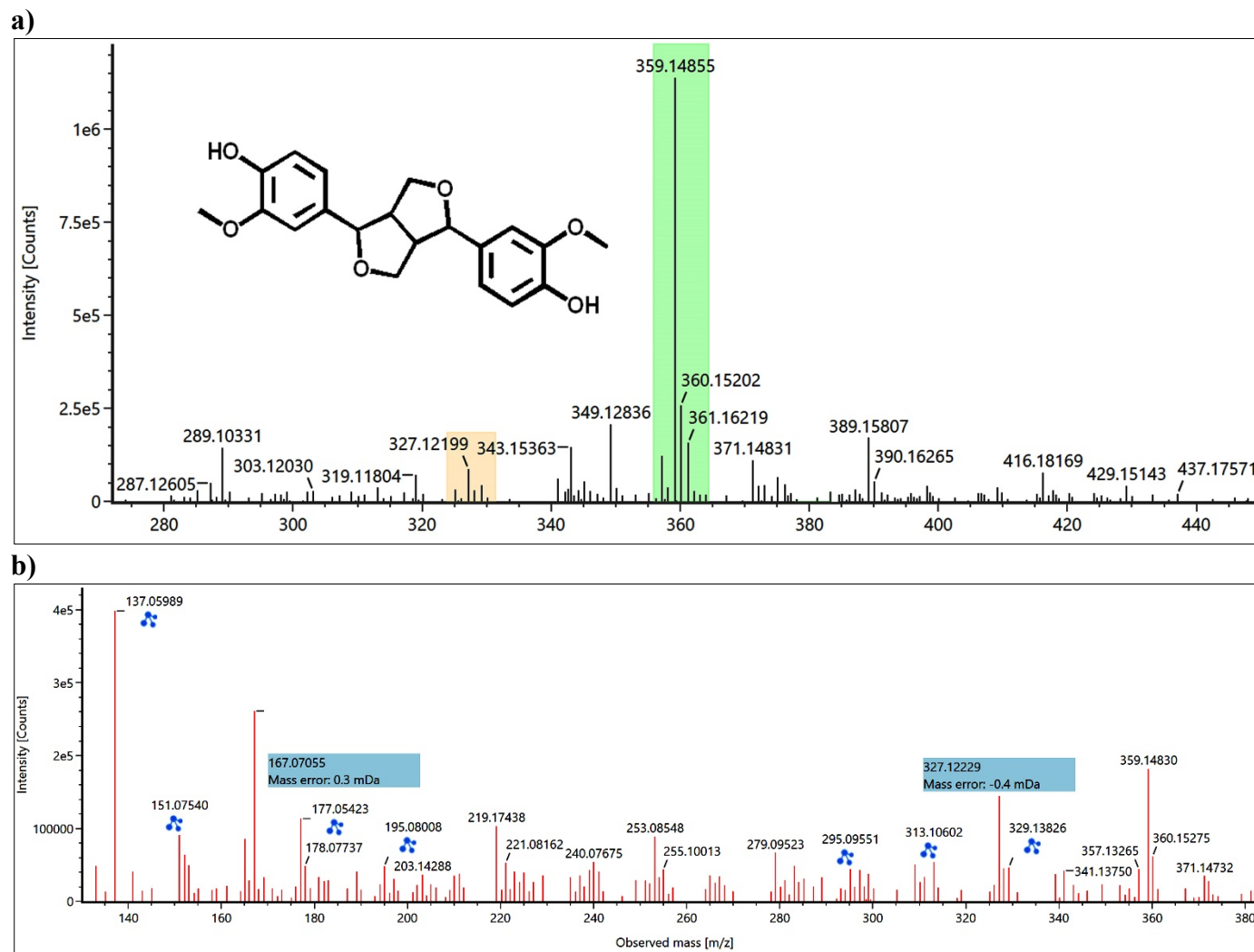


Fig. S4 Structures of the compounds identified from SAM using MS/MS fragmentation analysis

