

**Hypouricemic effect of Gallic acid, a bioactive compound from *Sonneratia
apetala* Leaves and Branches, on hyperuricemic mice**

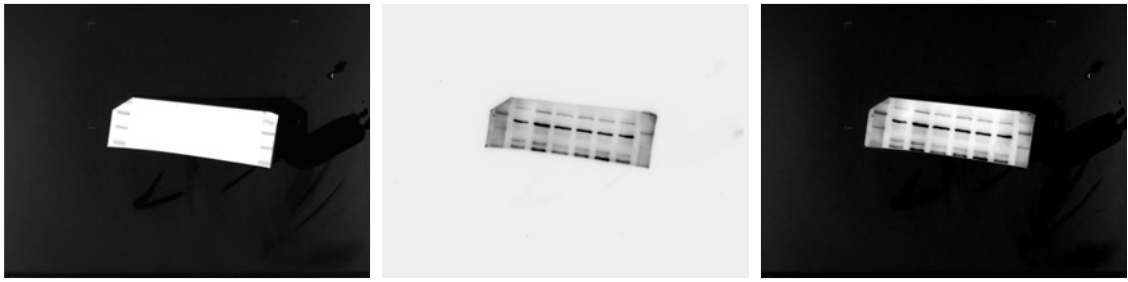
---Original images for WB

Contents

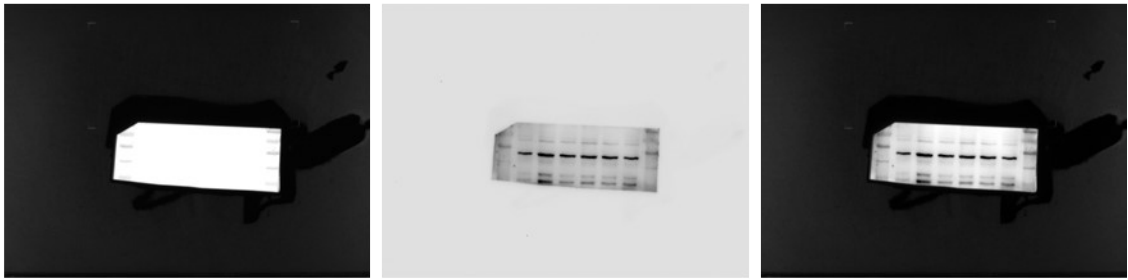
Renal tissues.....	2
Renal URAT1.....	2
Renal GLUT9.....	3
Renal ABCG2.....	4
Renal β -actin.....	5
Renal OAT1.....	6
Renal OAT3.....	7
Renal β -actin.....	8
Intestine tissues.....	9
Intestine URAT1.....	9
Intestine GLUT9.....	10
Intestine β -actin.....	11

Renal URAT1

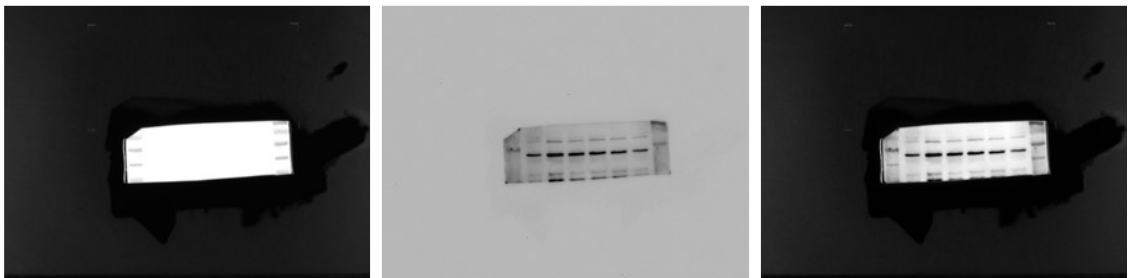
1



2

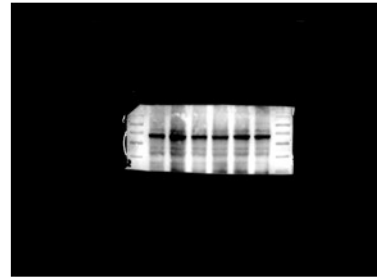
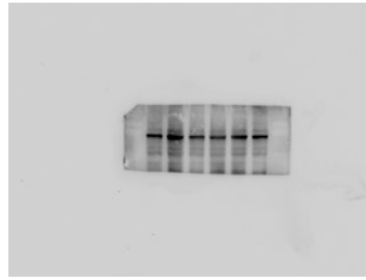
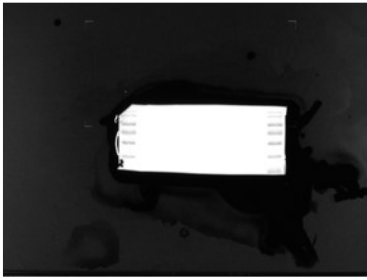


3

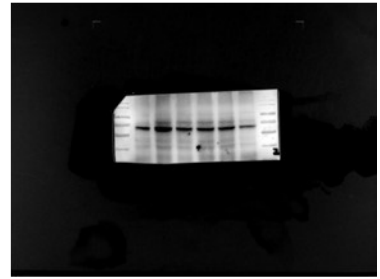
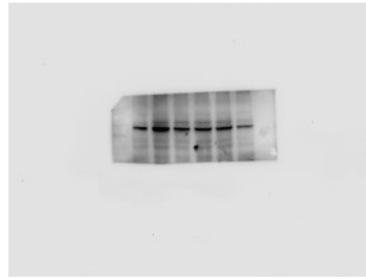
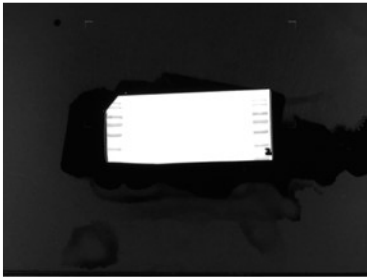


Renal GLUT9

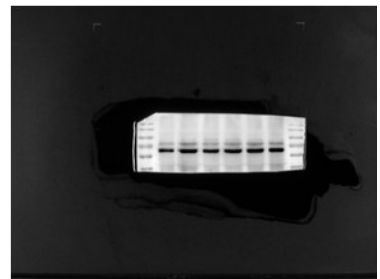
1



2

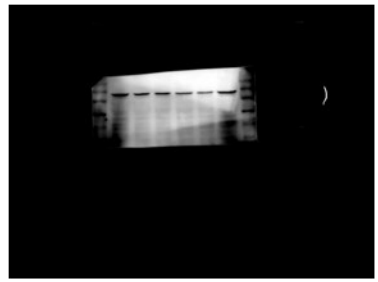
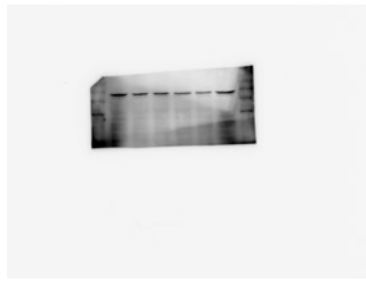
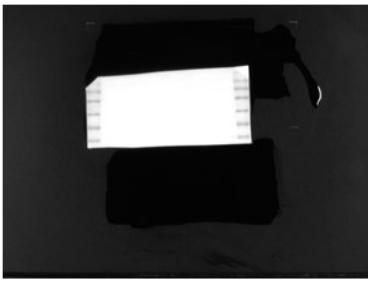


3

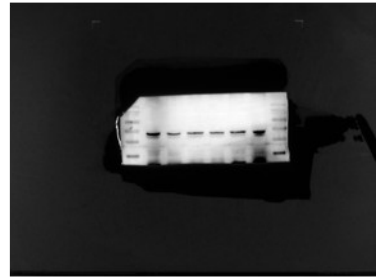
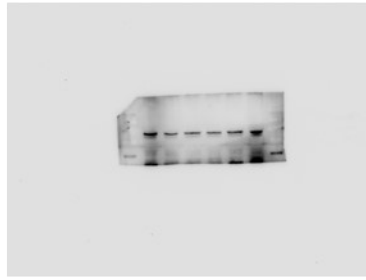


Renal ABCG2

1



2

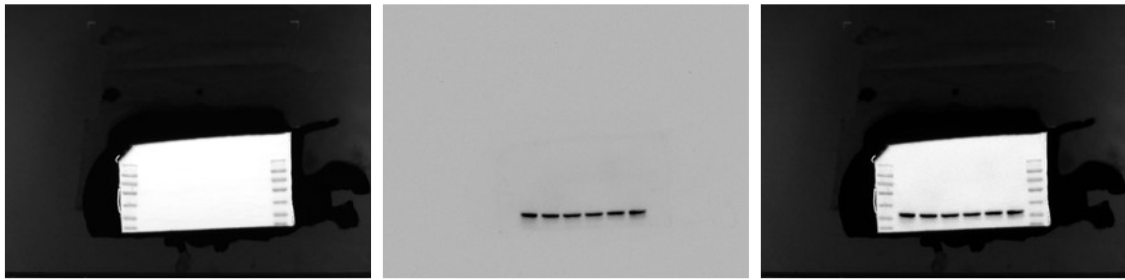


3



Renal β -actin

1



2

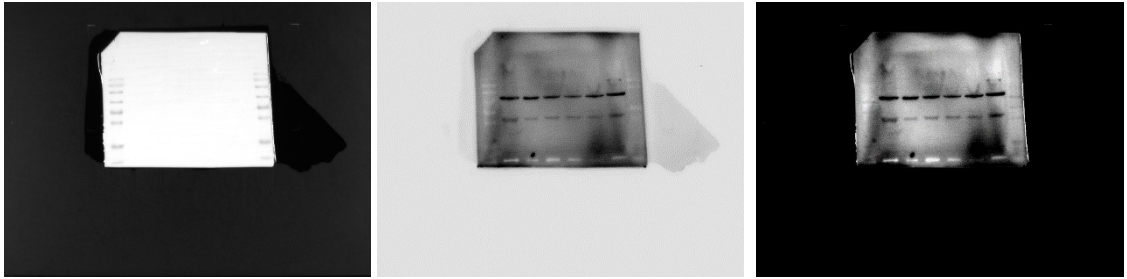


3

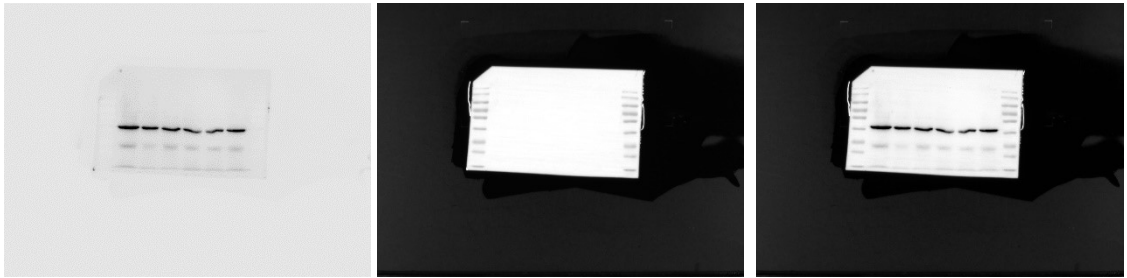


Renal OAT1

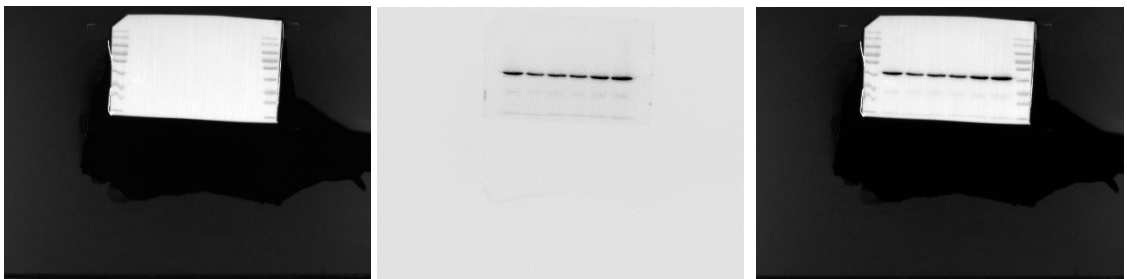
1



2

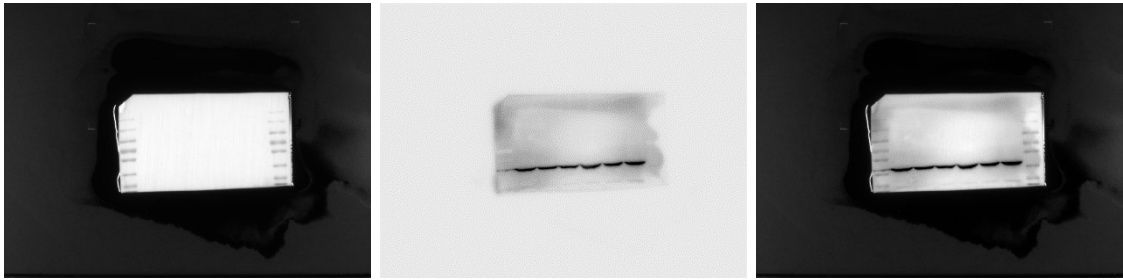


3

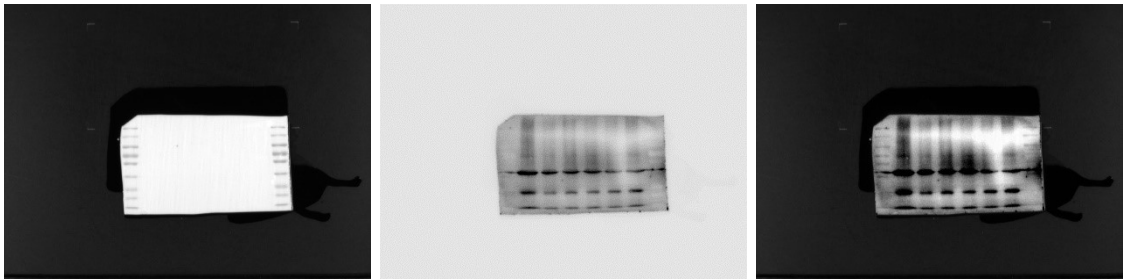


Renal OAT3

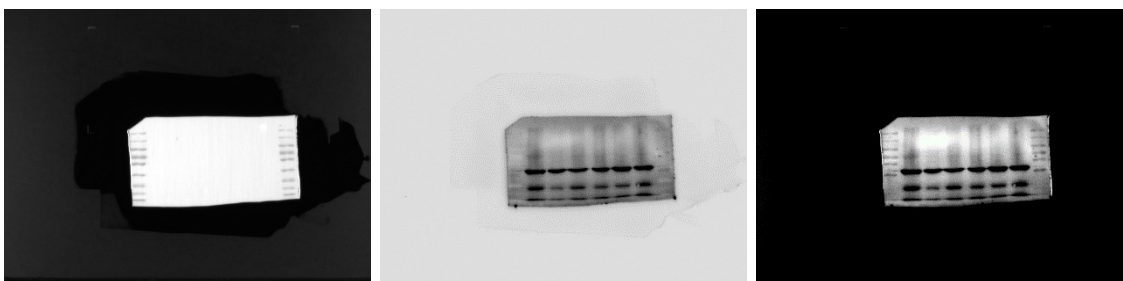
1



2

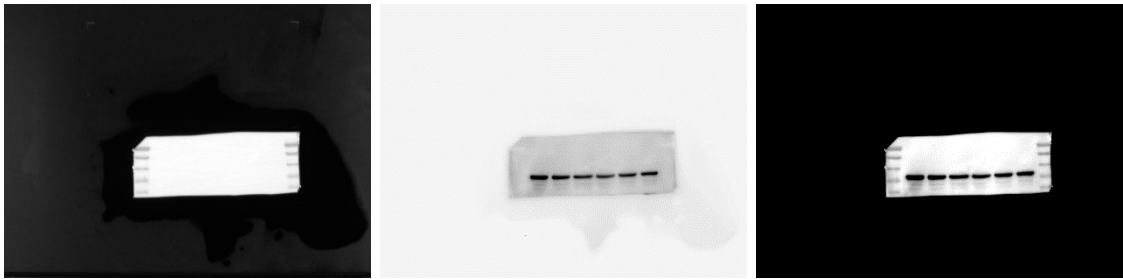


3

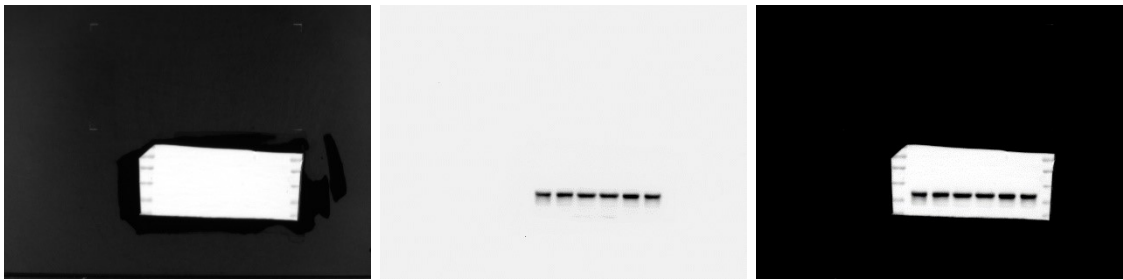


Renal β -actin

1



2

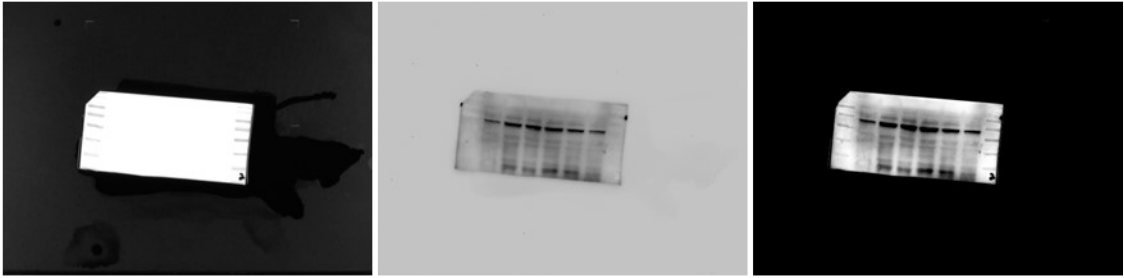


3

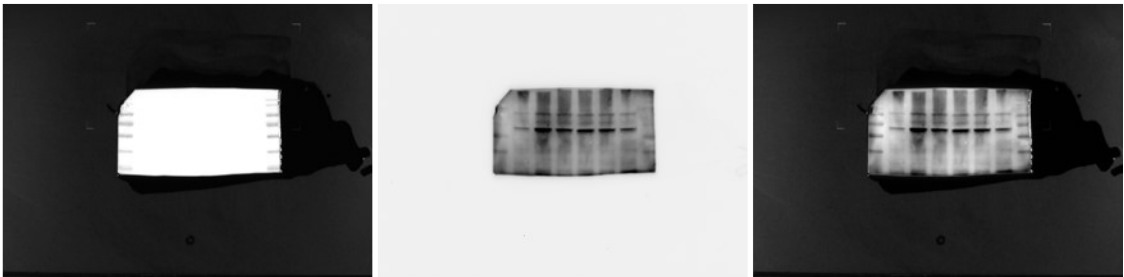


Intestine GLUT9

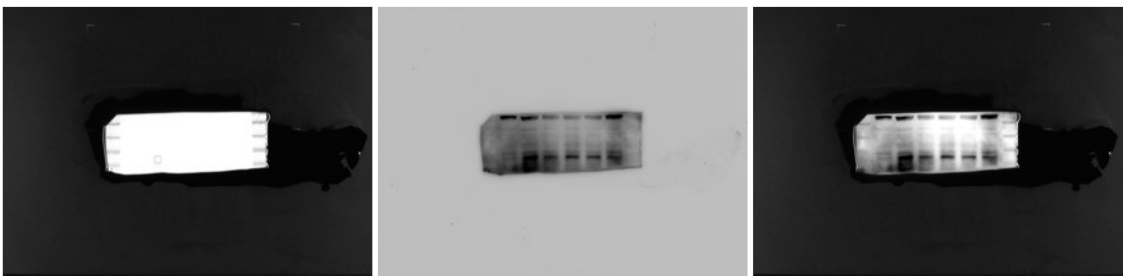
1



2

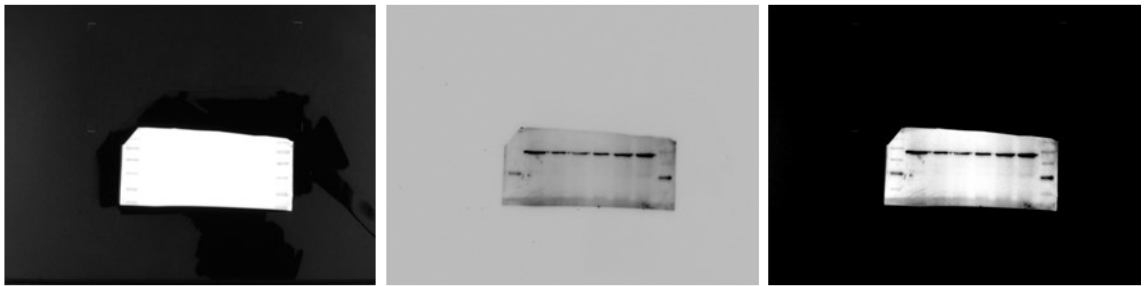


3

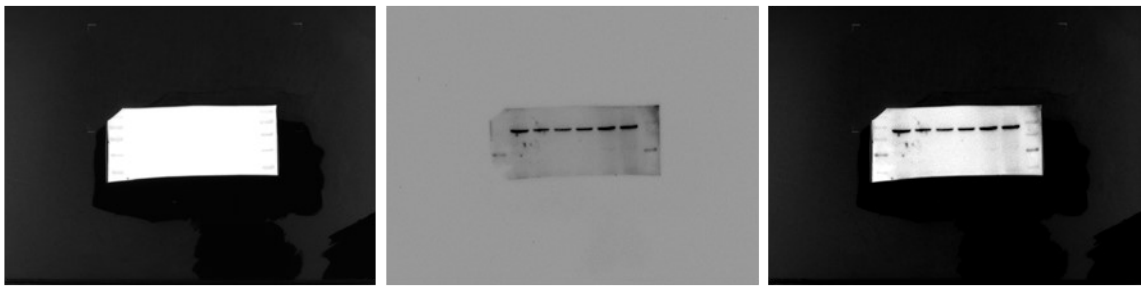


Intestine ABCG2

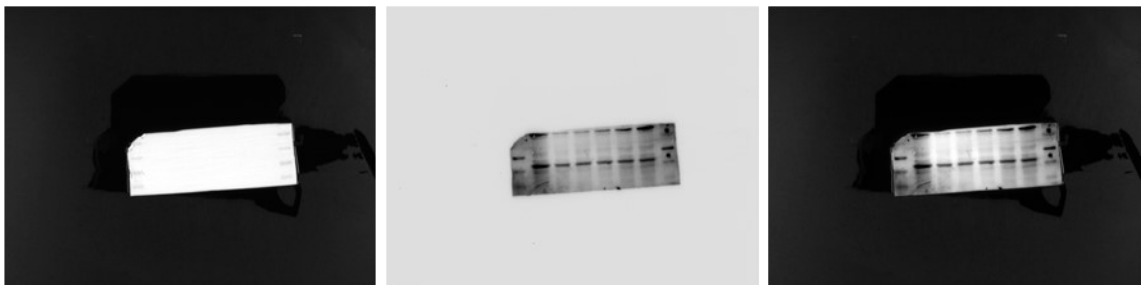
1



2



3



Intestine β -actin

