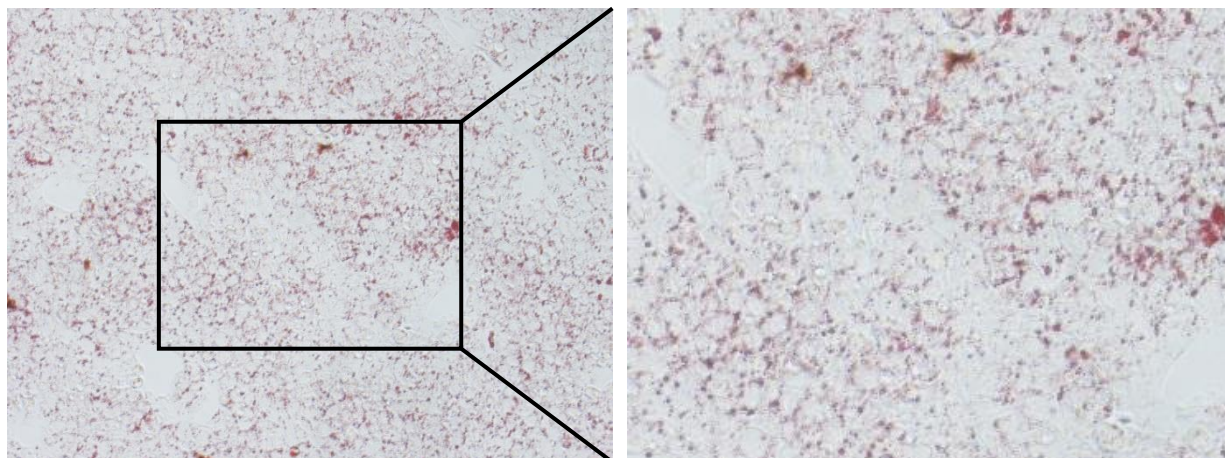
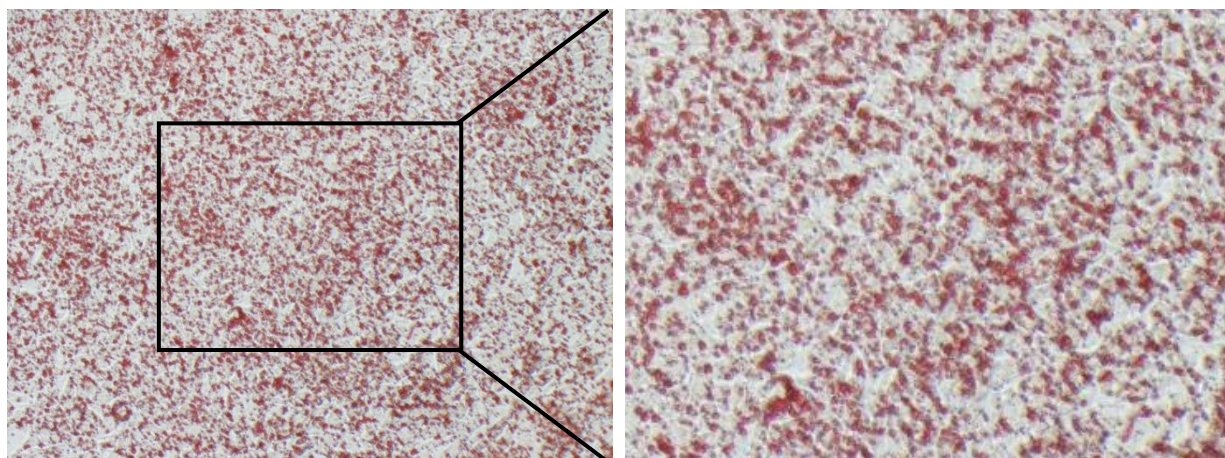


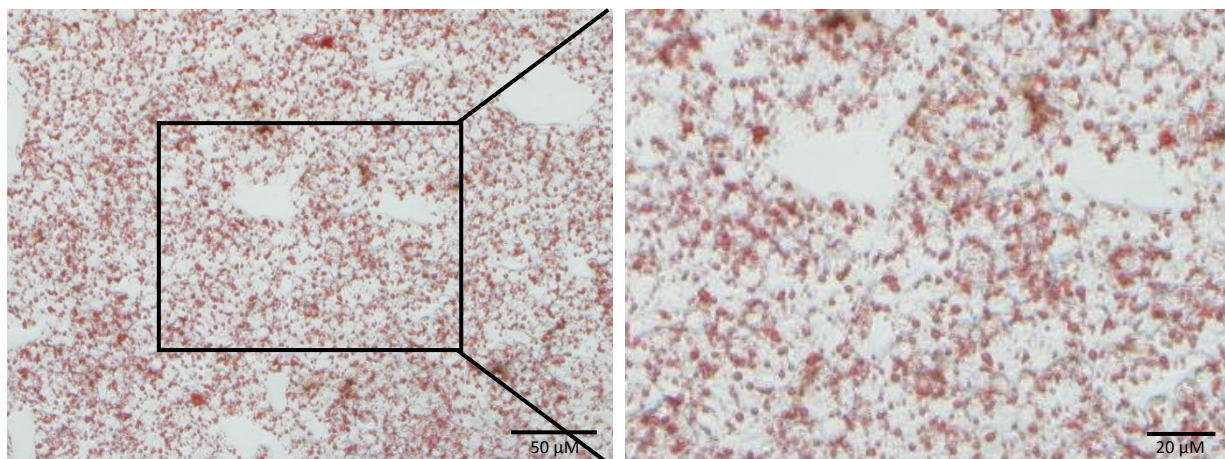
CON



OA/PA

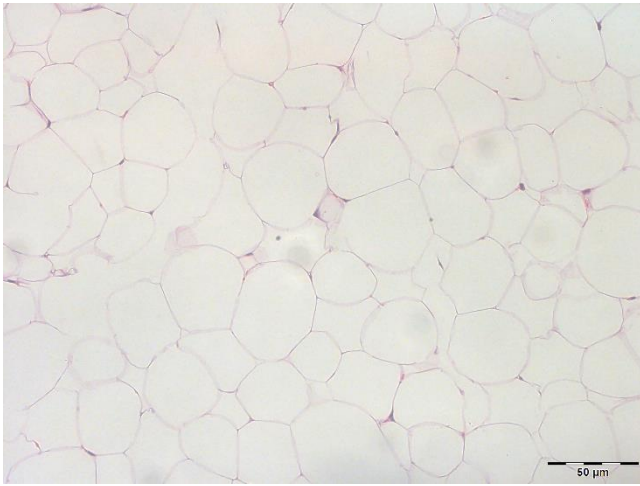


OA/PA+Perillartine

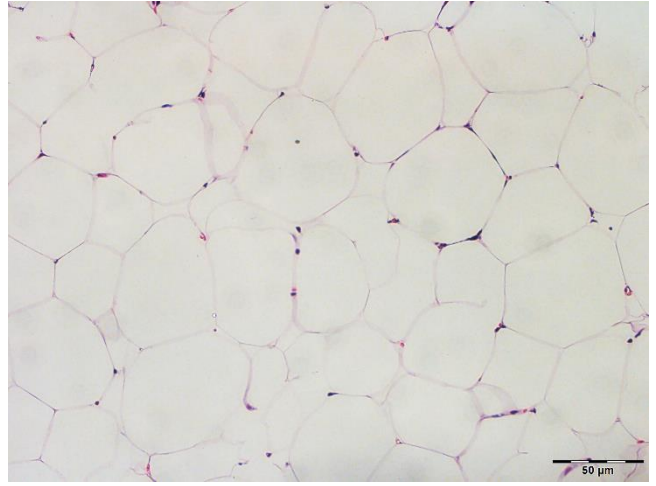


Supplemental figure 2. Oil red O staining of HepG2 cells

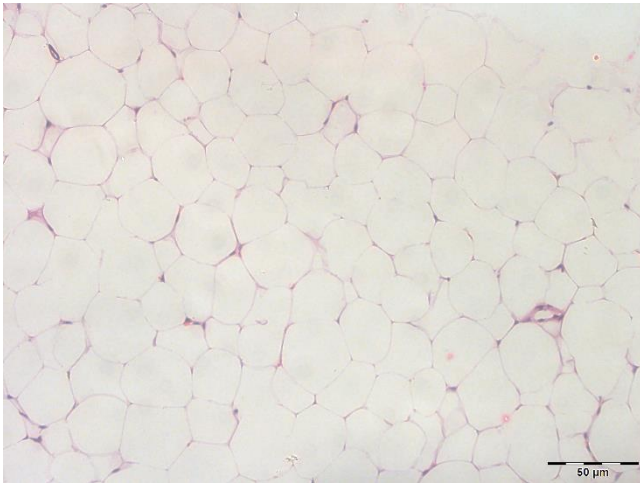
CON



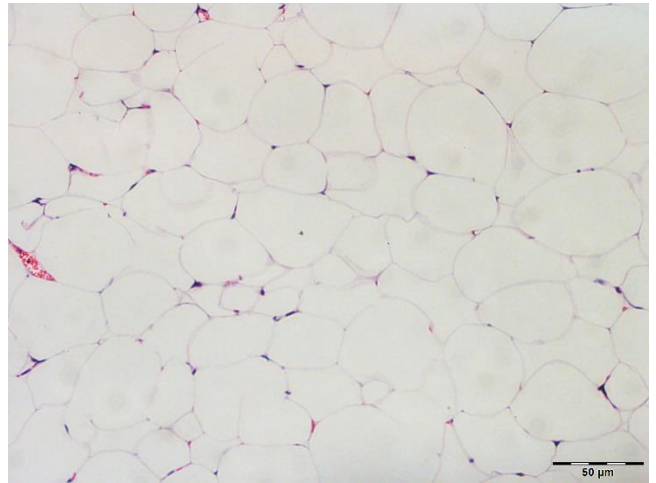
HFD



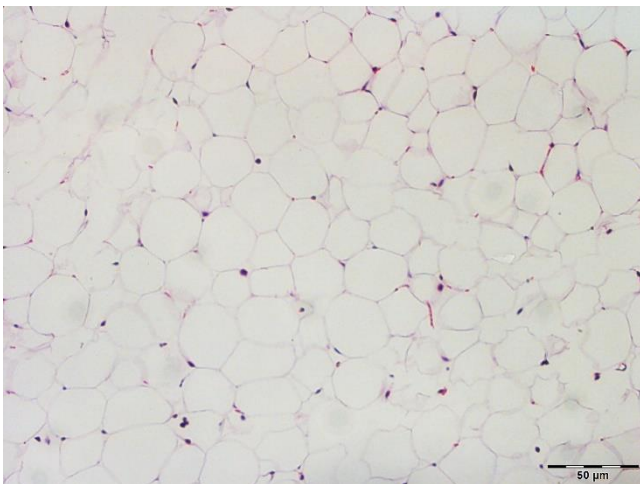
CON+0.8



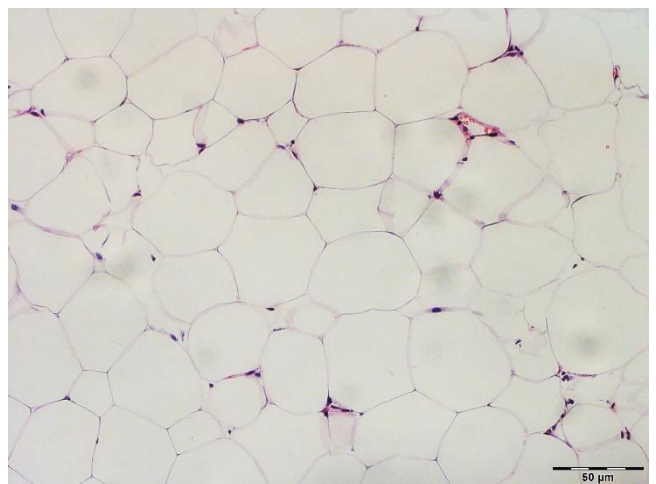
HFD+0.8



CON+1.6



HFD+1.6

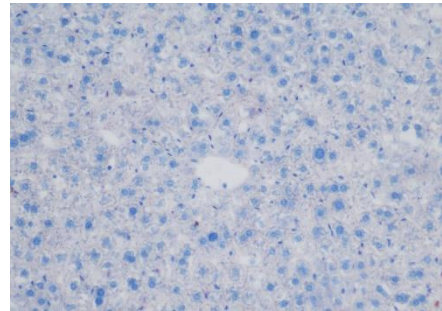
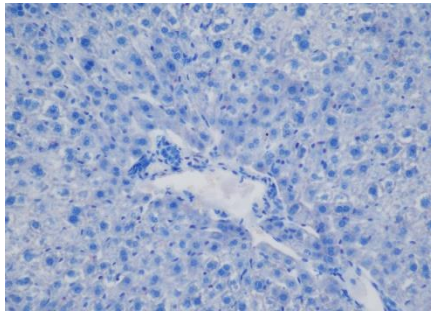
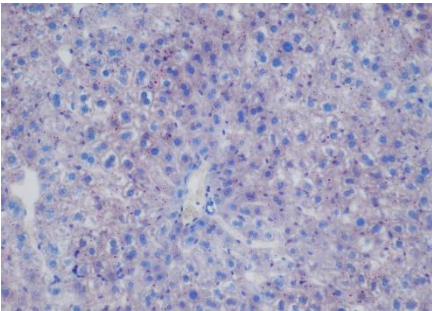
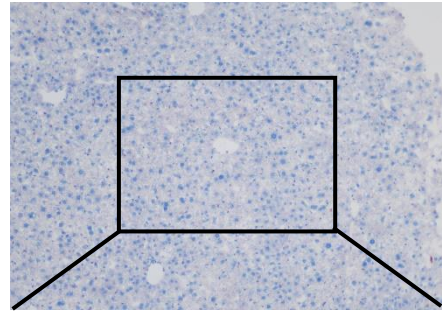
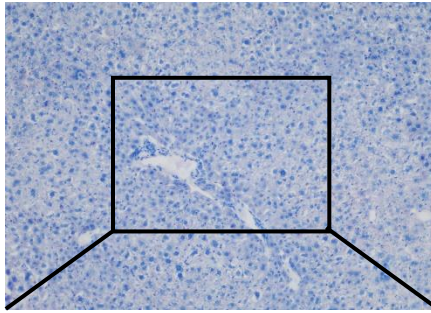
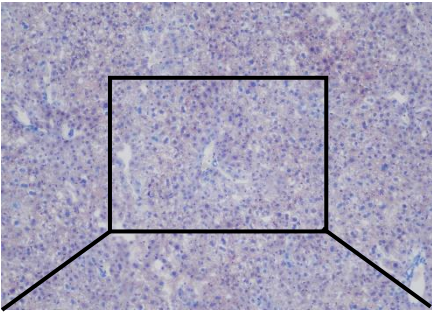


Supplemental figure 3. H&E staining of epididymal fat sections

CON

CON+0.8

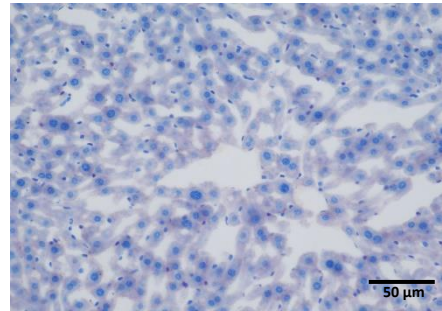
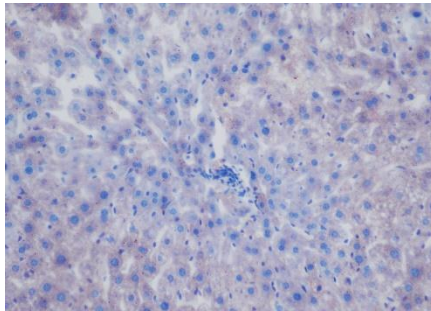
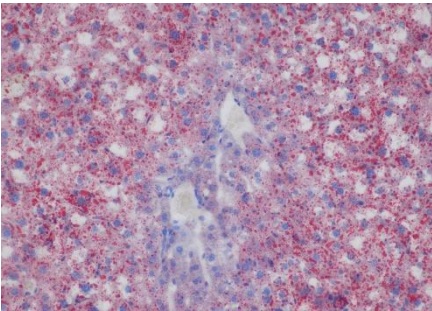
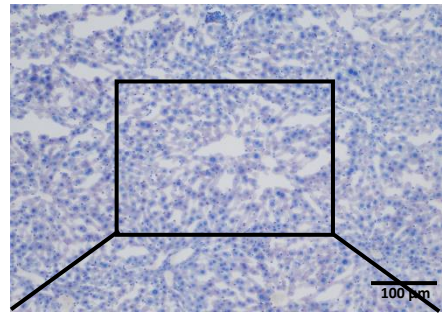
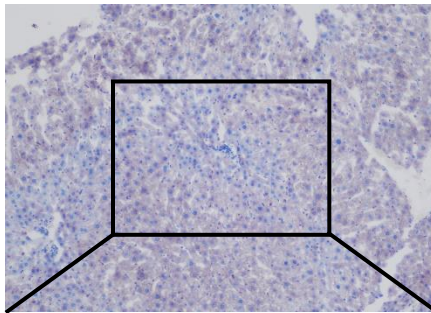
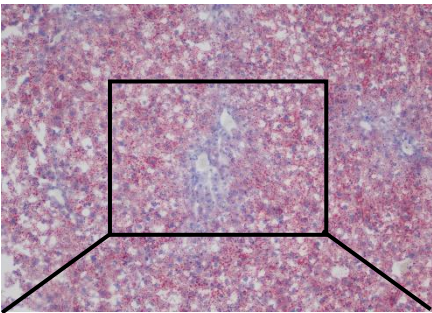
CON+1.6



HFD

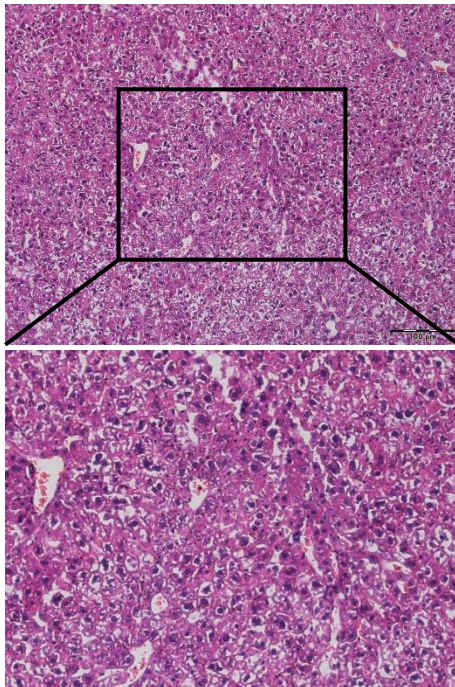
HFD+0.8

HFD+1.6

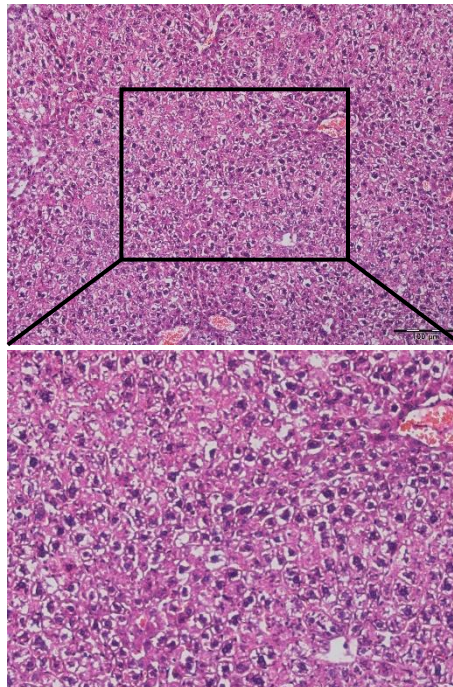


Supplemental figure 4. Oil red O staining of epididymal fat sections

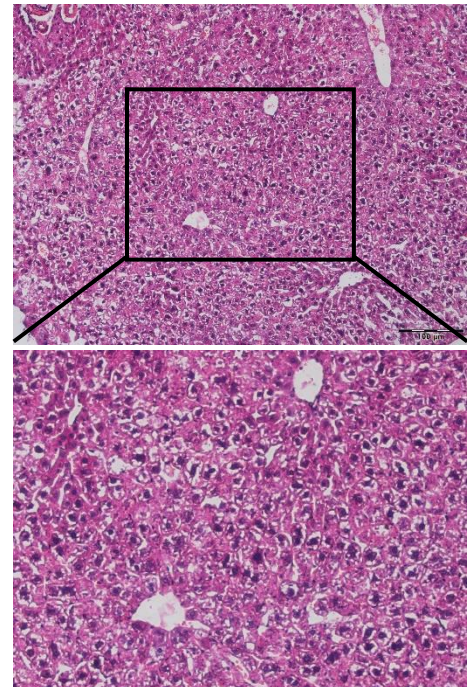
CON



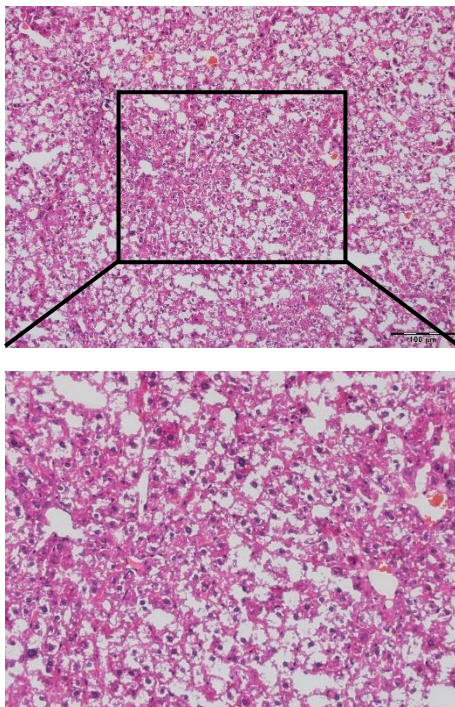
CON+0.8



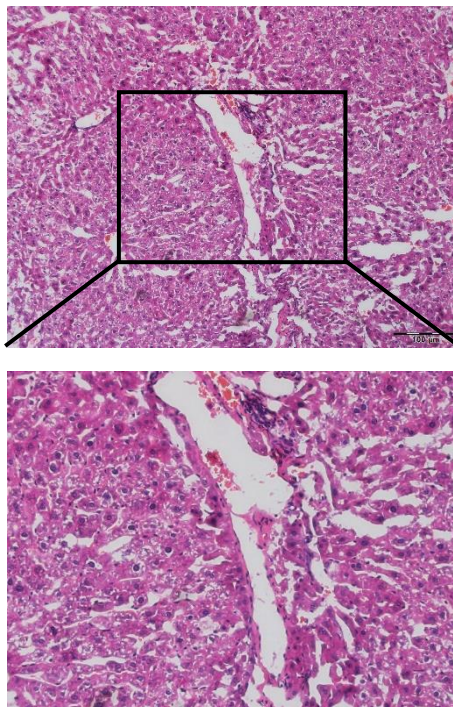
CON+1.6



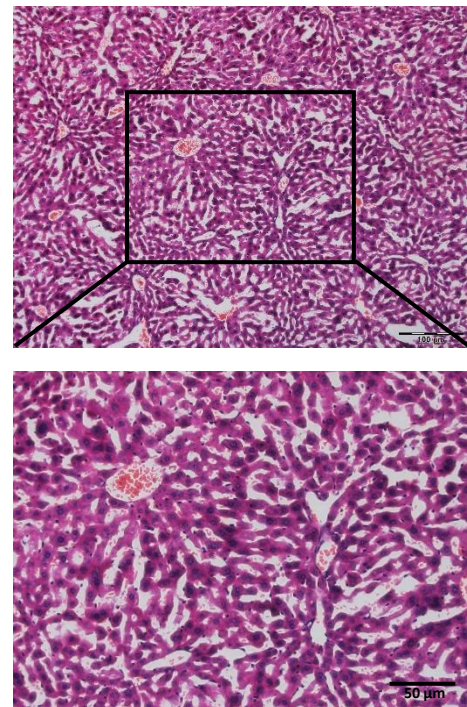
HFD



HFD+0.8

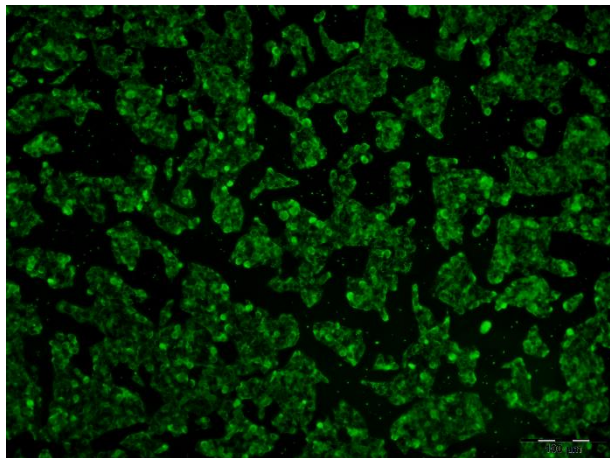


HFD+1.6

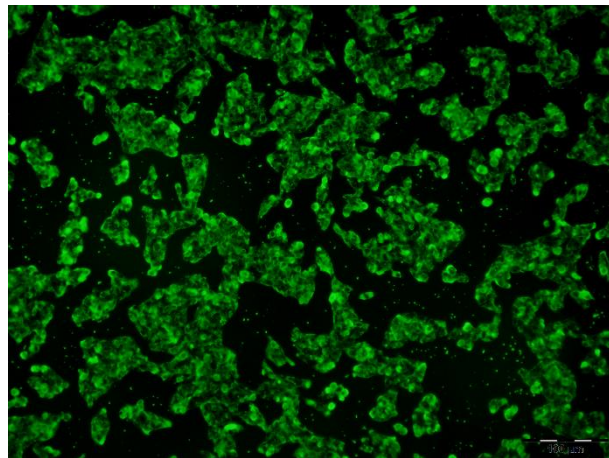


Supplemental figure 5. H&E staining of epididymal fat sections

A

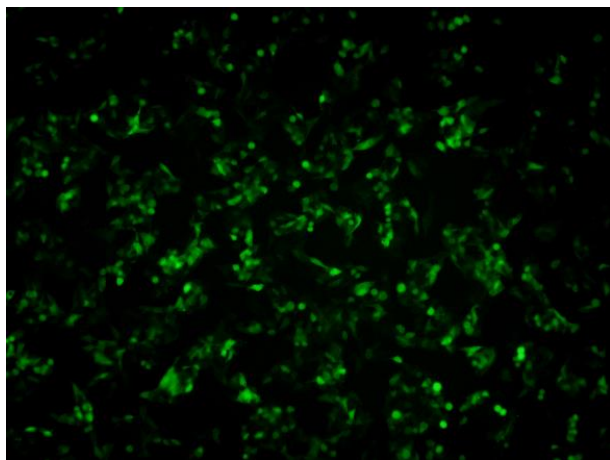


0 μ M

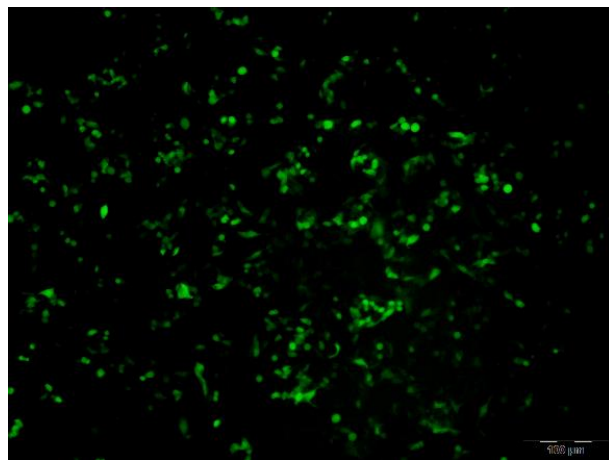


75 μ M

B



0 μ M



75 μ M

Supplemental figure 6. Mitochondrial fluorescent image of HepG2 cells; ROS fluorescent image of HepG2 cells.