

Supplementary Information

Latex Derived from *Ficus carica* L. Inhibited the Growth of NSCLC by Regulating the Caspase/Gasdermin/AKT Signaling Pathway

Li Baohong^{a, b}, Li Zhongyuan^b, Tan Ying^c, Yan Beibei^b, Ni Wenting^b, Yin Yiming^b, Cui Qinghua^{*a} and Zhu Qingjun^{*a}

^a Innovation Research Institute of Traditional Chinese Medicine, Shandong University of Traditional Chinese Medicine, Jinan 250355, China.

^b College of Pharmacy, Shandong University of Traditional Chinese Medicine, Jinan 250355, China.

^c Experiment Center, Shandong University of Traditional Chinese Medicine, Jinan 250355, China.

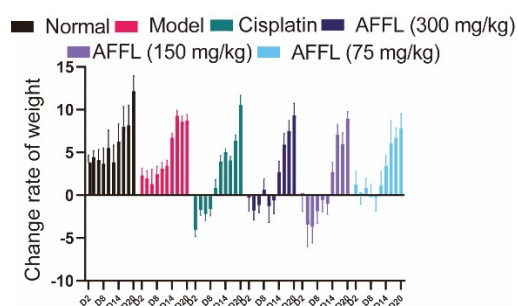


Fig. S1 The rate of change in body weight in the various treatment groups

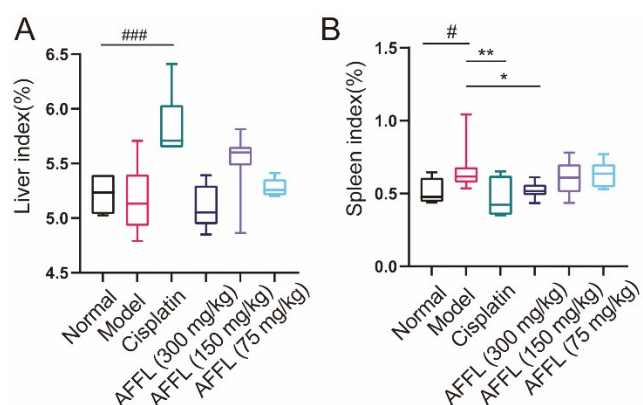


Fig. S2 (A, B) The liver and spleen indices of mice in the various treatment groups were measured. All data are shown as the mean \pm standard error of the mean (SEM) of at least four independent experiments. * $p < 0.05$, ** $p < 0.01$, and *** $p < 0.001$ compared to the model group (Model). # $p < 0.05$, ## $p < 0.01$, and ### $p < 0.001$ compared to the normal group (Normal).

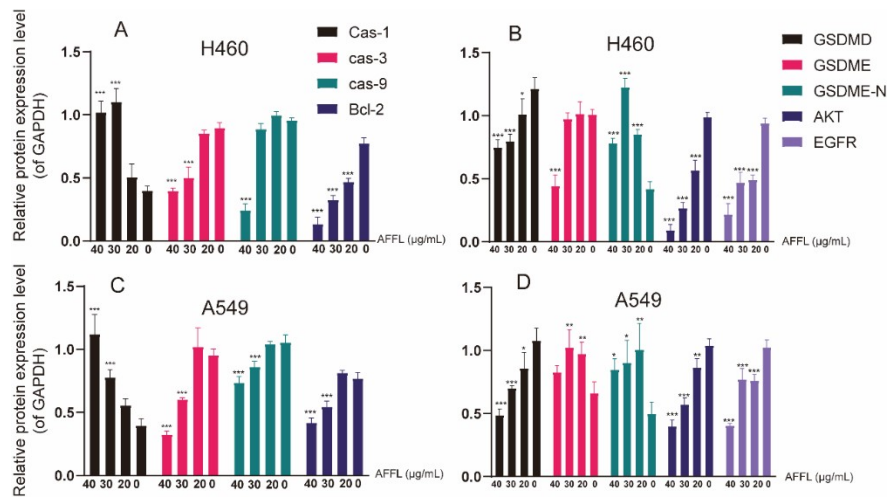


Fig. S3 (A, B) Target protein quantification in H460 cells. (C, D) Target protein quantification in A549 cells. In both H460 and A549 cells, GAPDH was used as a control. All data are shown as the mean \pm standard error of the mean (SEM) of at least three independent experiments. * $p < 0.05$, ** $p < 0.01$, and *** $p < 0.001$ compared to the normal control group (0).