

The EPP mainly composed of arabinose, galactose, glucose, mannose, galacturonic acid, and glucuronic acid in molar ratios of 13.42:25.12:10.92:8.59:2.07:0.82.

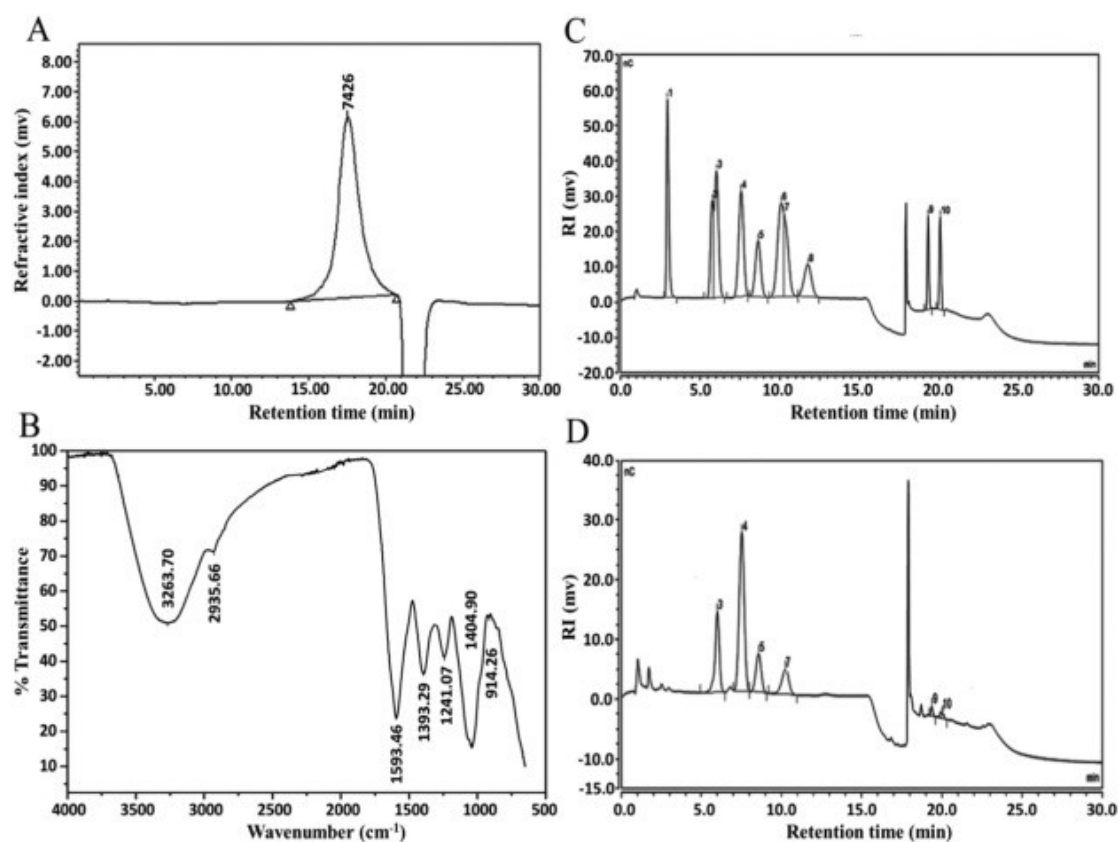


Fig. Structural characterizations of EPP. (A) HPSEC-RI chromatogram of EPP. (B) FT-IR spectrum of EPP. (C) HPLC chromatograms of PMP derivatives of monosaccharide standard samples (1. Fuc, 2. Rha, 3. Ara, 4. Gal, 5. Glc, 6. Xly, 7. Man, 8. Fru, 9. GlaA, 10. GlcA). (D) Monosaccharide composition of EPP.