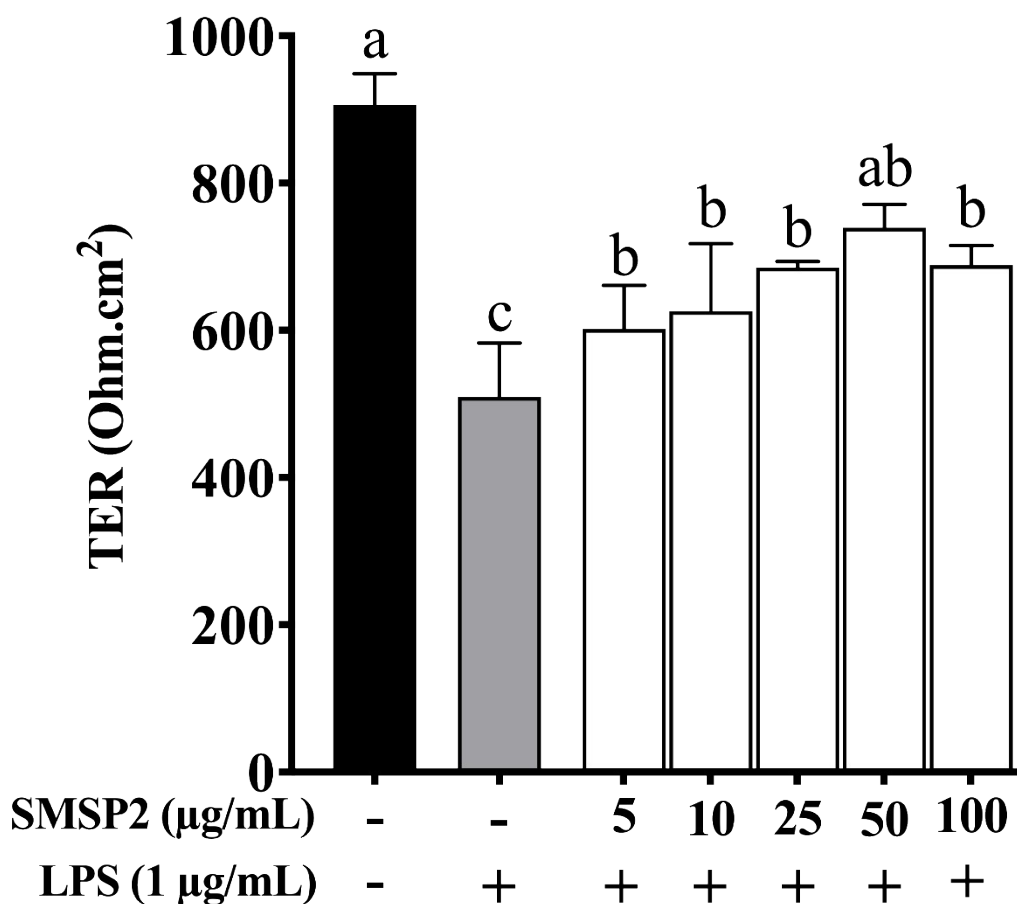


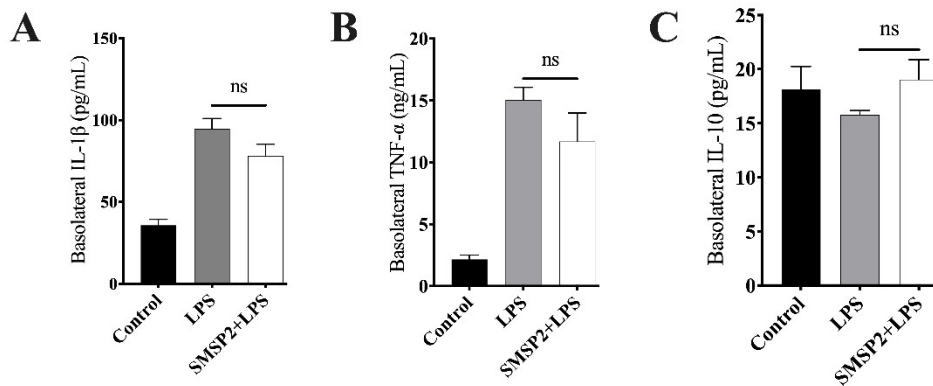
### Supplementary data



**Fig. S1:** Dose response of SMSP2 on Caco-2 cell monolayer TER values. Caco-2 cells were seeded in a Transwell filter and differentiated for 21 days. The fully differentiated Caco-2 cells were co-culture for 32 h with LPS-stimulated RAW264.7 macrophages seeded in the Transwell basolateral compartment and treated with or without SMSP2 at different concentration (5, 10, 25, 50, and 100  $\mu\text{g/mL}$ ). The TER was measured after 32 h of co-culture. Data are presented as mean  $\pm$  (SD);  $n=3$ . Bars with different letters indicate statistically significant differences between groups determined using one-way ANOVA followed by Tukey's HDS test ( $P < 0.05$ ).

Table 1: Primers used in the current study

List	Forward (5'-3')	Reverse (5'-3')
<b>iNOS</b>	GACCAGTACGTTTGGCAATG	TTTCAGCATGAAGAGCGATTT
<b>COX-2</b>	TTGCATTCTTTGCCAGCAC	ACCGTAGATGCTCAGGGACT
<b>IL-8</b>	GAGCACTCCATAAGGCACAAA	ATGGTTCCTTCCGGTGGT
<b>TNF-<math>\alpha</math></b>	AGCCCATGTTGTAGCAAACC	TCTCAGCTCCACGCCATT
<b><math>\beta</math>-actin</b>	AAGTCCCTTGCCATCCTAAA	ATGCTATCACCTCCCCTGTG
<b>Claudin-1</b>	GCATGAAGTGTATGAAGTGCTTGGGA	CGATTCTATTGCCATACCATGCTG
<b>ZO-1</b>	AGCCTGCAAAGCCAGCGCA	AGTGGCCTGGATGGGTTTCATAG
<b>Occludin</b>	TCCAATGGCAAAGTGAATGA	CGCTGCTGTAACGAGGCT



**Fig. S2:** Basolateral cytokines level. IL-1 $\beta$  (A), TNF- $\alpha$  (B) and IL-10 (C). Data are presented as mean  $\pm$  (SD); n=3. The significant difference was determined using one-way ANOVA: (\*) p < 0.05, compared to the LPS group. ns: non-significant