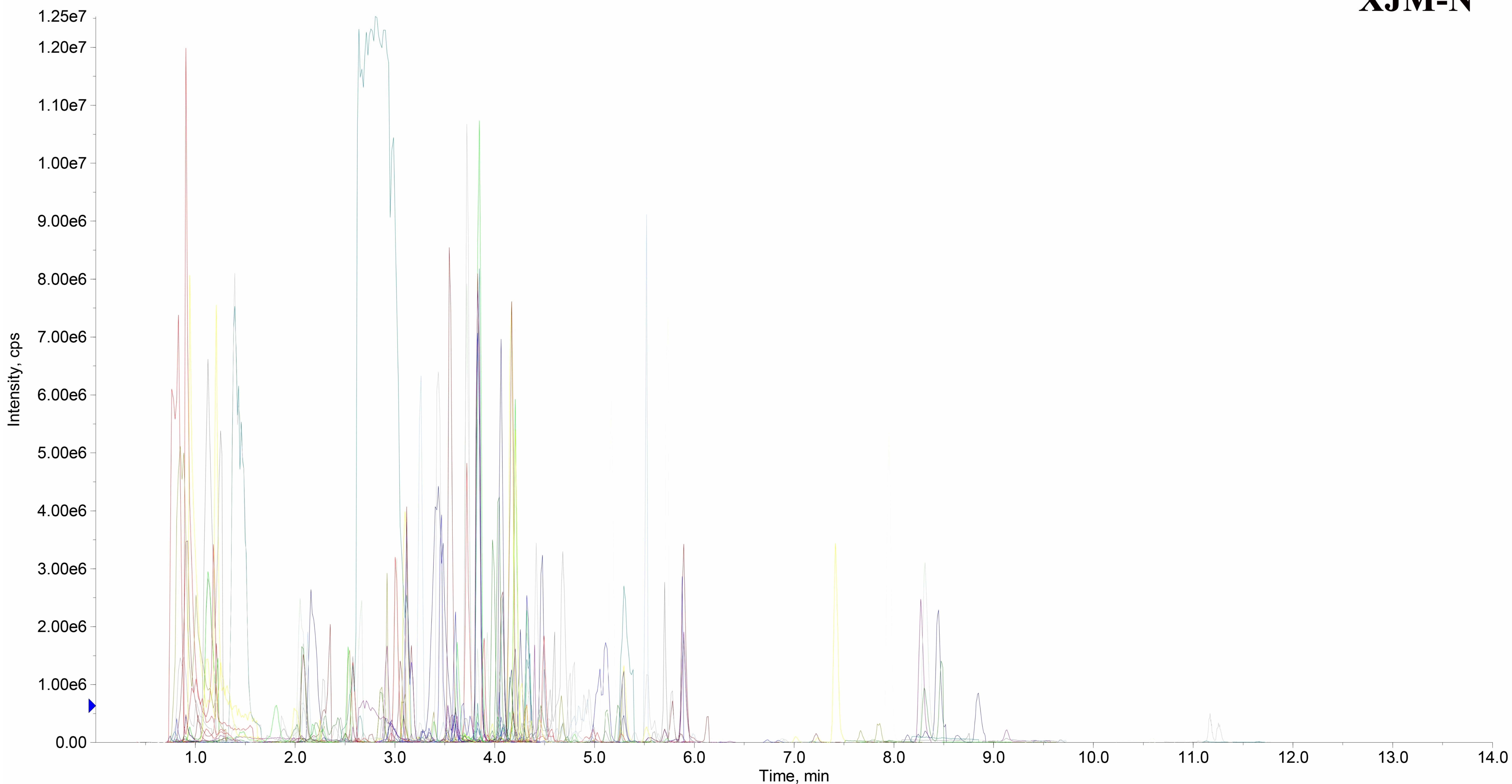


# XJM-N

XIC of -MRM (655 pairs): 353.088/191.050 amu Expected RT: 2.9 ID: mws2108 from Sample 32 (A20093799a\_N) of MWXS-19-1052Y-05-1\_12\_...



# XJM-P

XIC of +MRM (651 pairs): 132.102/69.000 amu Expected RT: 1.0 ID: pme0274 from Sample 14 (A20093799a\_P) of MWXS-19-1052Y-05-1\_12\_J...

