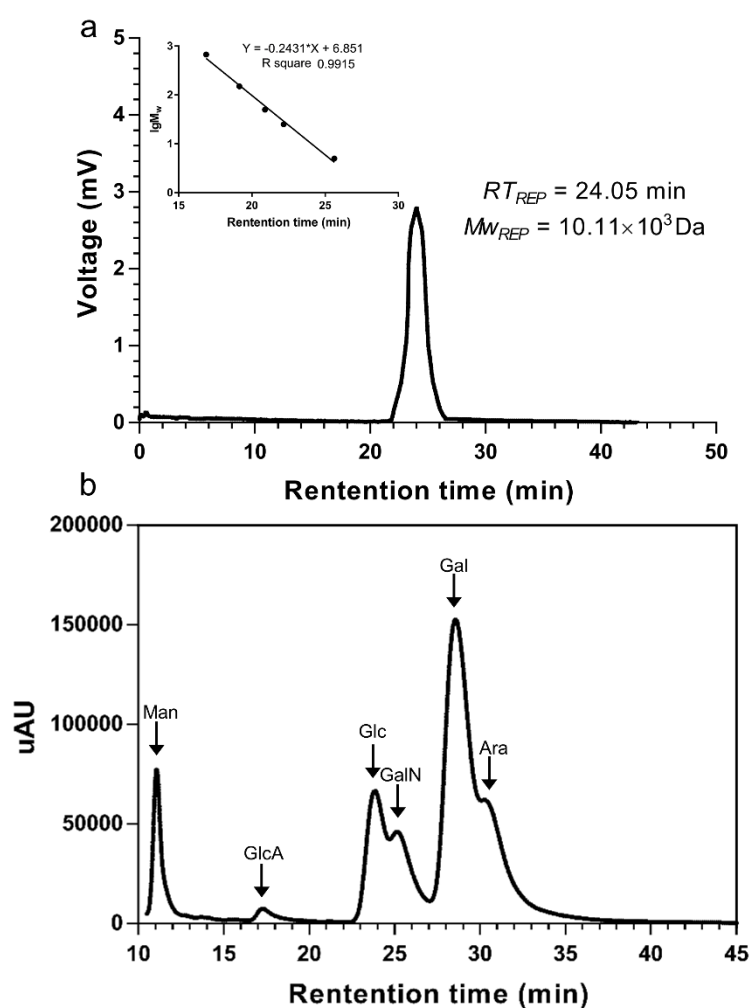


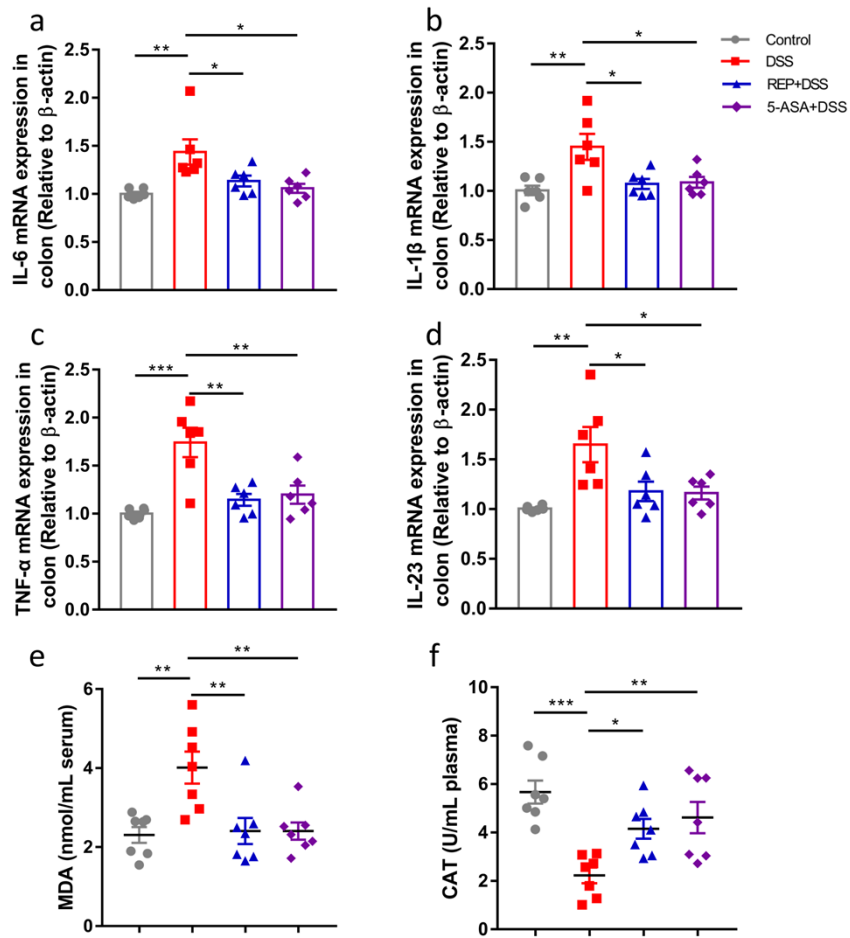
## Supplementary Materials

### Gut microbiota mediates anti-colitis effects of polysaccharides derived from *Rhopilema esculentum* Kishinouye in mice

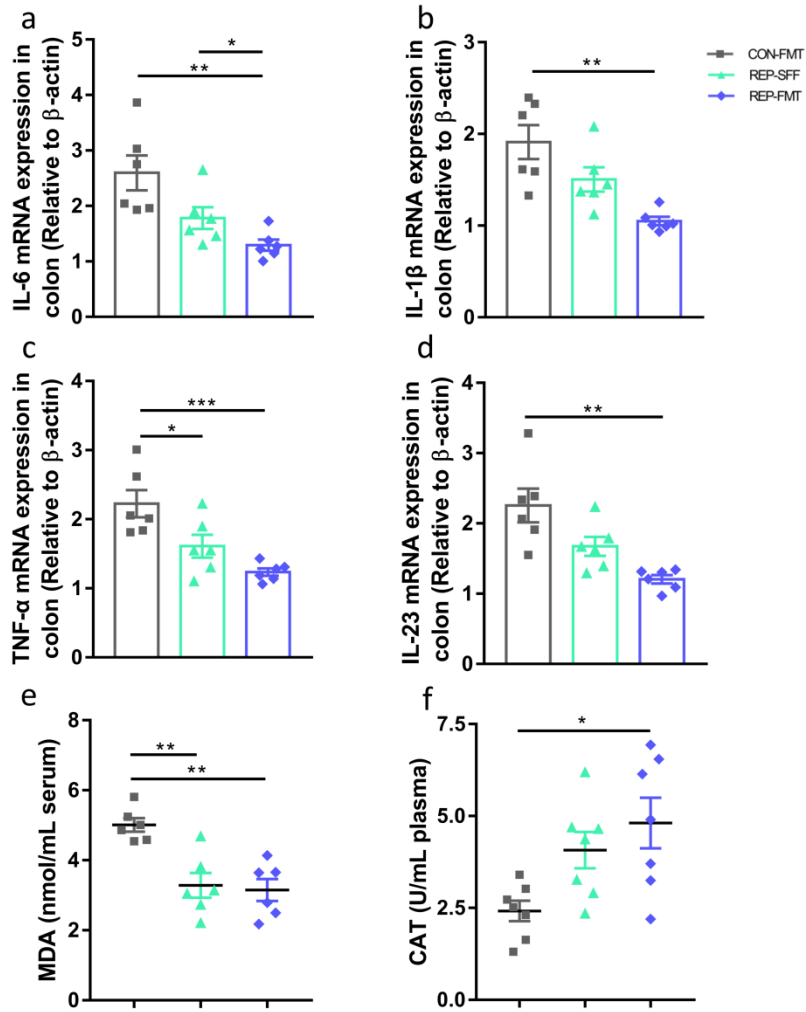
#### Supplementary Figures



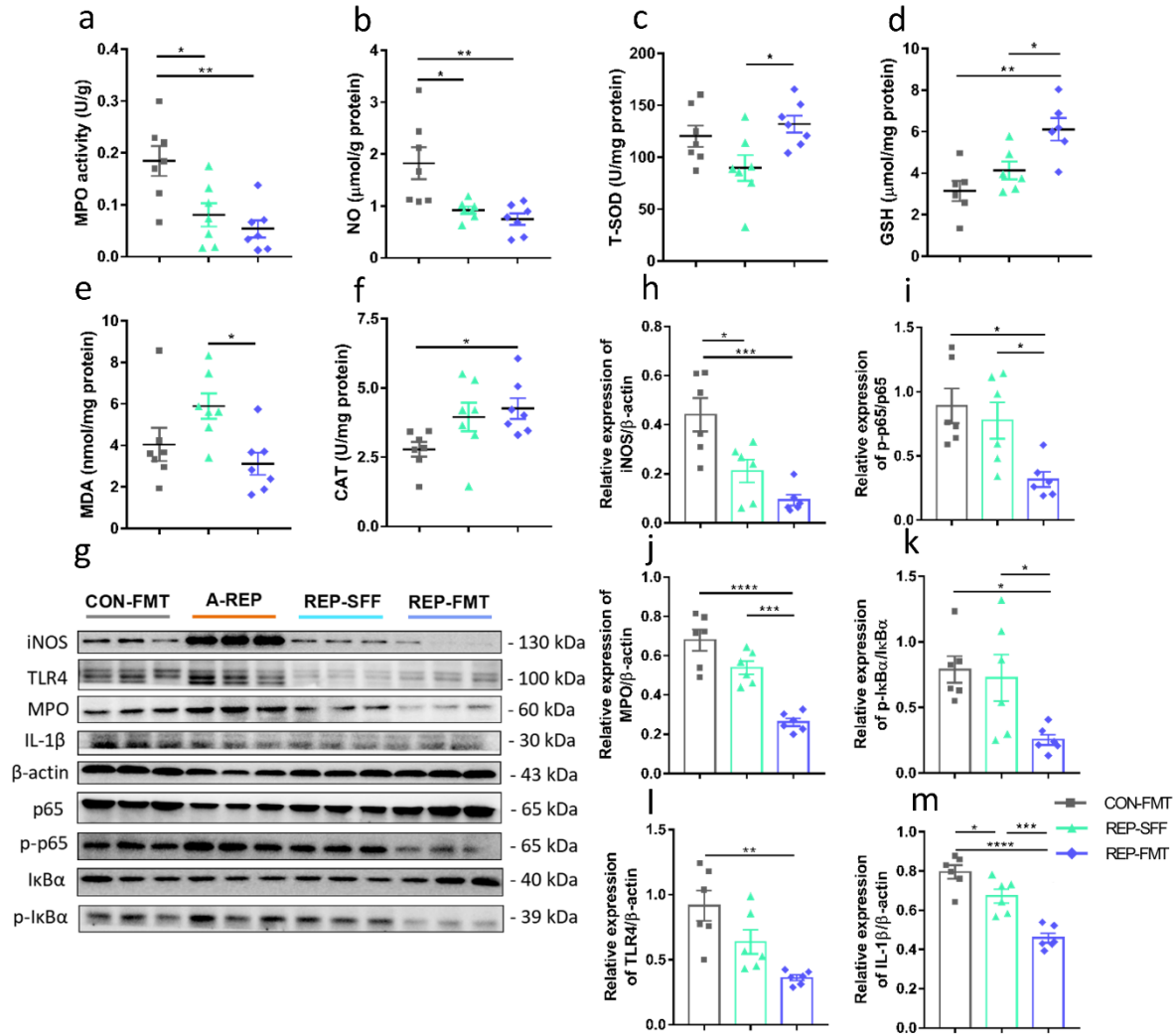
**Fig. S1.** The characterization results of *Rhopilema esculentum* polysaccharide (REP).  
(a) The HPGPC profile of molecular weight of REP. (b) HPLC-MS chromatograms for monosaccharide composition analysis of REP.



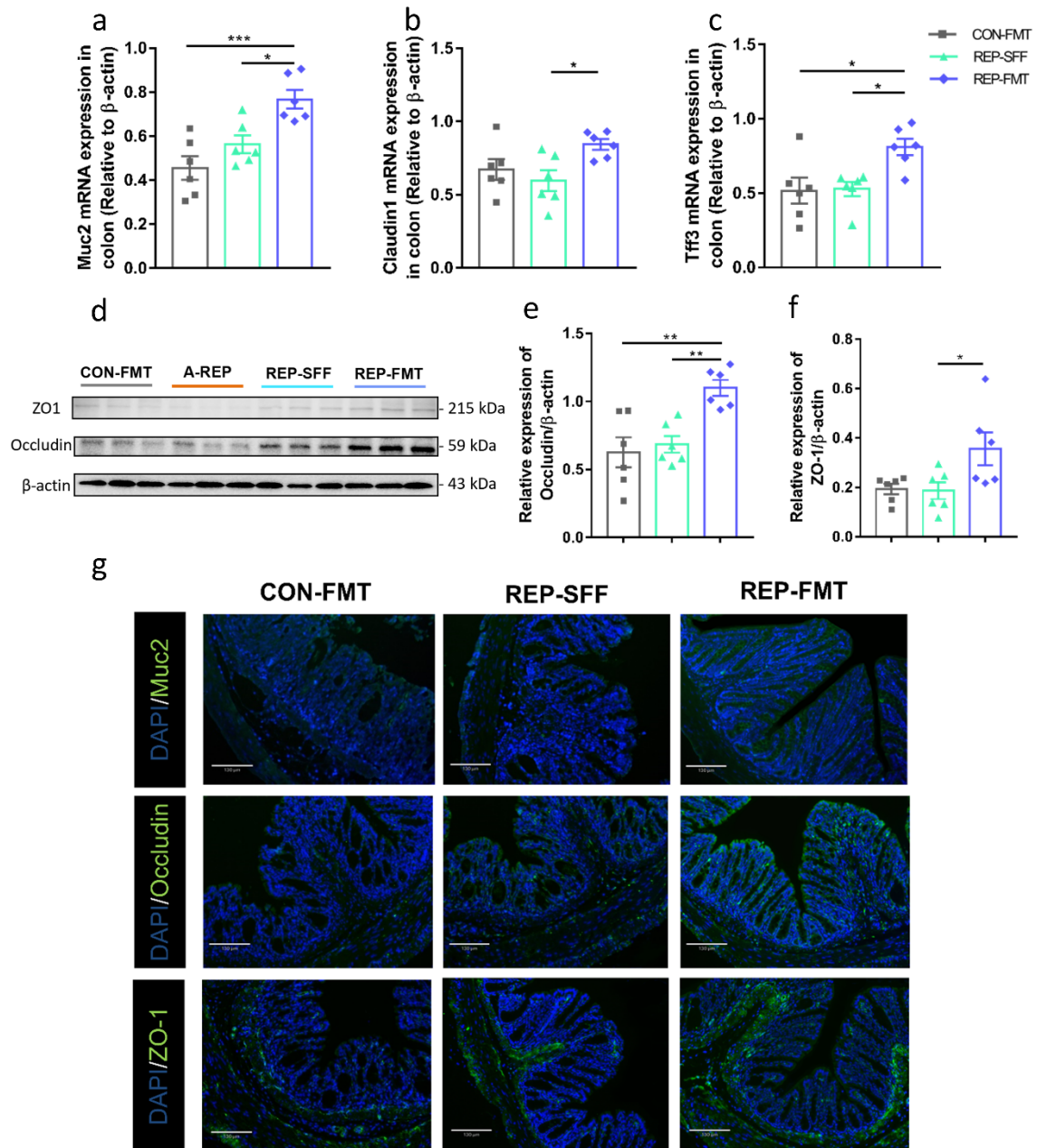
**Fig. S2. REP modulated inflammatory cytokines in colonic tissues and regulated oxidative stress in serum and plasma.** Relative mRNA expression of (a) IL-6, (b) IL-1 $\beta$ , (c) TNF- $\alpha$ , (d) IL-23 in the colonic tissue (n=6). Concentration of MDA (e) in serum and CAT (f) in the plasma (n=7).



**Fig. S3. REP-FMT contributed more to modulate inflammatory cytokines in colonic tissues and oxidative stress in serum and plasma.** Relative mRNA expression of (a) IL-6, (b) IL-1 $\beta$ , (c) TNF- $\alpha$ , (d) IL-23 in the colonic tissue (n=6). Concentration of MDA (e) in serum and CAT (f) in the plasma (n=6).



**Fig. S4. REP-FMT attenuated the oxidative stress and regulated inflammatory responses compared to CON-FMT and REP-SFF.** Concentrations of MPO activity (a), NO (b), T-SOD (c), GSH (d), MDA (e) and CAT (f) in the colon (n=6-7). (g) Western blot images of iNOS, p65, p-p65, TLR4, MPO, IL-1 $\beta$ ,  $\beta$ -actin, I $\kappa$ B- $\alpha$  and p-I $\kappa$ B- $\alpha$ . The relative expression of respective protein (h-m) was quantified via Image J software (n=6). Results were presented as mean $\pm$  SEM. \* p < 0.05, \*\* p < 0.01, \*\*\* p < 0.001, \*\*\*\* p < 0.0001.



**Fig. S5. REP-FMT improved colonic epithelial integrity and mucosal barrier function compared to CON-FMT and REP-SFF.** Relative mRNA expression of Muc2, Claudin1 and Tff3 (a-c) in the colonic tissue (n=6). (d) Expression of ZO-1 and Occludin in the colon was measured by western blot, and the relative intensity of ZO-1 (e) and Occludin (f) proteins was analyzed by Image J software (n=6). (g) Immunofluorescence image of expression of Muc2 and Tjs. Magnification:  $\times 100$ . Results were displayed as mean  $\pm$  SEM. \*  $p < 0.05$ , \*\*  $p < 0.01$ , \*\*\*  $p < 0.001$ , \*\*\*\*  $p < 0.0001$ .

## Supplementary Tables

**Table S1: List of ELISA kits**

ELISA kits	Catalog Number	Manufacturer
IL-6	ml002293-C	
IL-1 $\beta$	ml063132-C	
TNF- $\alpha$	ml002095-C	Shanghai Enzyme-linked
IL-8	ml028580	Biotechnology Co., Ltd
IL-23	ml001919	
IFN- $\gamma$	ml002277	
LPS	ml037221-J	

**Table S2: Primer sequences used for RT-PCR experiments**

Genes	Gene ID	Forward primer	Reverse primer
$\beta$ -actin	11461	CCTGAACCCCTAAGGCCAACC	CGGAGTCCATCACAATGCCT
IL-6	16193	CTCAGCGCTGAGTTG	CCTGTAGCCCACGTCGTAGC
TNF- $\alpha$	21926	ACTGAACTTCGGGGTGATCG	GGCTACAGGCTTGTCACCTCG
IL-1 $\beta$	16176	GAGCACCTTCTTTTCCTTCATCTT	TCACACACCAGCAGGTTATCATC
IL-23R	209590	ACTATGCCATCAAAGTCAAGGT	CCAAGAGTTCAGCCATCCTC
Occludin	18260	GGCAAGCGATCATAACCAGAG	AGGCTGCCTGAAGTCATCCAC
ZO-1	21872	GACCAATAGCTGATGTTGCCAGAG	TATGAAGGCGAATGATGCCAGA
Muc2	17831	TCATGACGTCTGGTGAATGG	AGCTTGTCGTGGCAGCTTGA
E-cadherin	12550	GCCAATCCTGATGAAATTGGAAAC	CCACTGCCCTCGTAATCGAAC
Tff3	21786	TGCTGCCATGGAGACCAGAG	GACATTTGCCGGCACCATAC

**Table S3: List of antibodies**

<b>Name of Antibody</b>	<b>Catalog number</b>	<b>Concentration</b>	<b>Company</b>
<b>NF-κB/p65</b>	#8242	1:1000	Cell Signaling Technology
<b>p-NF-κB/p65</b>	#3033	1:1000	Cell Signaling Technology
<b>IkBα</b>	#4814	1:1000	Cell Signaling Technology
<b>p-IkBα</b>	#2859	1:1000	Cell Signaling Technology
<b>iNOS</b>	A3774	1:1000	ABclonal Technology
<b>MPO</b>	A1374	1:1000	ABclonal Technology
<b>TLR4</b>	A5258	1:1000	ABclonal Technology
<b>IL-1β</b>	A16288	1:1000	ABclonal Technology
<b>β-actin</b>	4970	WB: 1:1000	Cell Signaling Technology
<b>Occludin</b>	27260-1-AP	IF: 1:300 WB: 1:1000	Proteintech Group
<b>ZO-1</b>	A0659	WB: 1:500	ABclonal Technology
<b>Muc2</b>	27675-1-AP	IF: 1:1000	Proteintech Group
<b>ZO-1</b>	Ab221547	IF: 1:100	Abcam plc
<b>Goat Anti-Rabbit IgG</b>	Ab150077	IF: 1:400	Abcam plc
<b>H&amp;L (Alexa Fluor® 488)</b>			