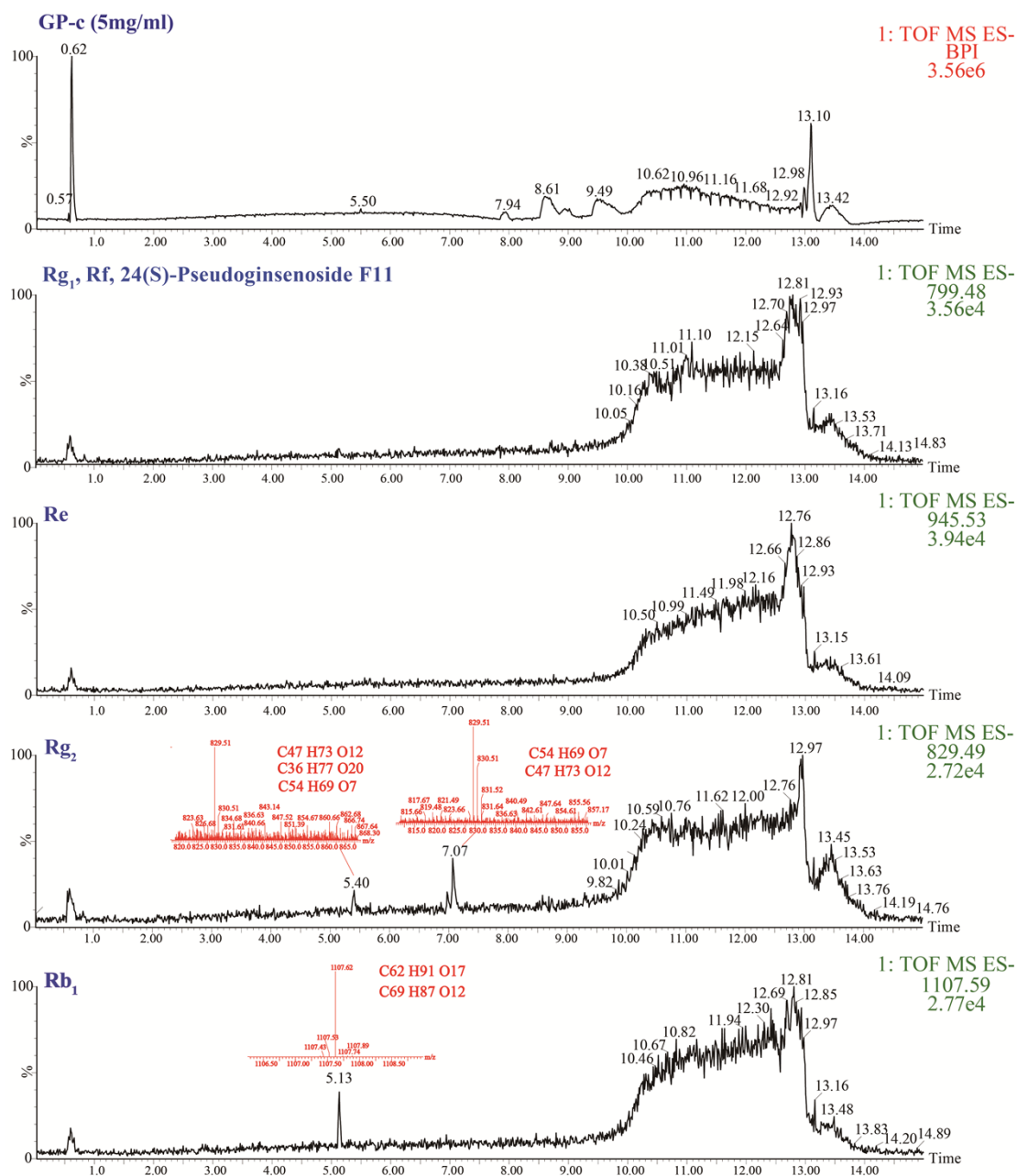


## Supplementary Materials



**Fig. S1.** The BPI chromatograms of GP-c, and extracted ion chromatograms for ginsenoside Rg<sub>1</sub>, Rf, 24(S)-Pseudoginsenoside F11, Re, Rg<sub>2</sub>, Rb<sub>1</sub>, Ro, Rc, Rb<sub>2</sub>, Rb<sub>3</sub>, Rd, 20(R)-Rg<sub>3</sub> and Rh<sub>2</sub>.

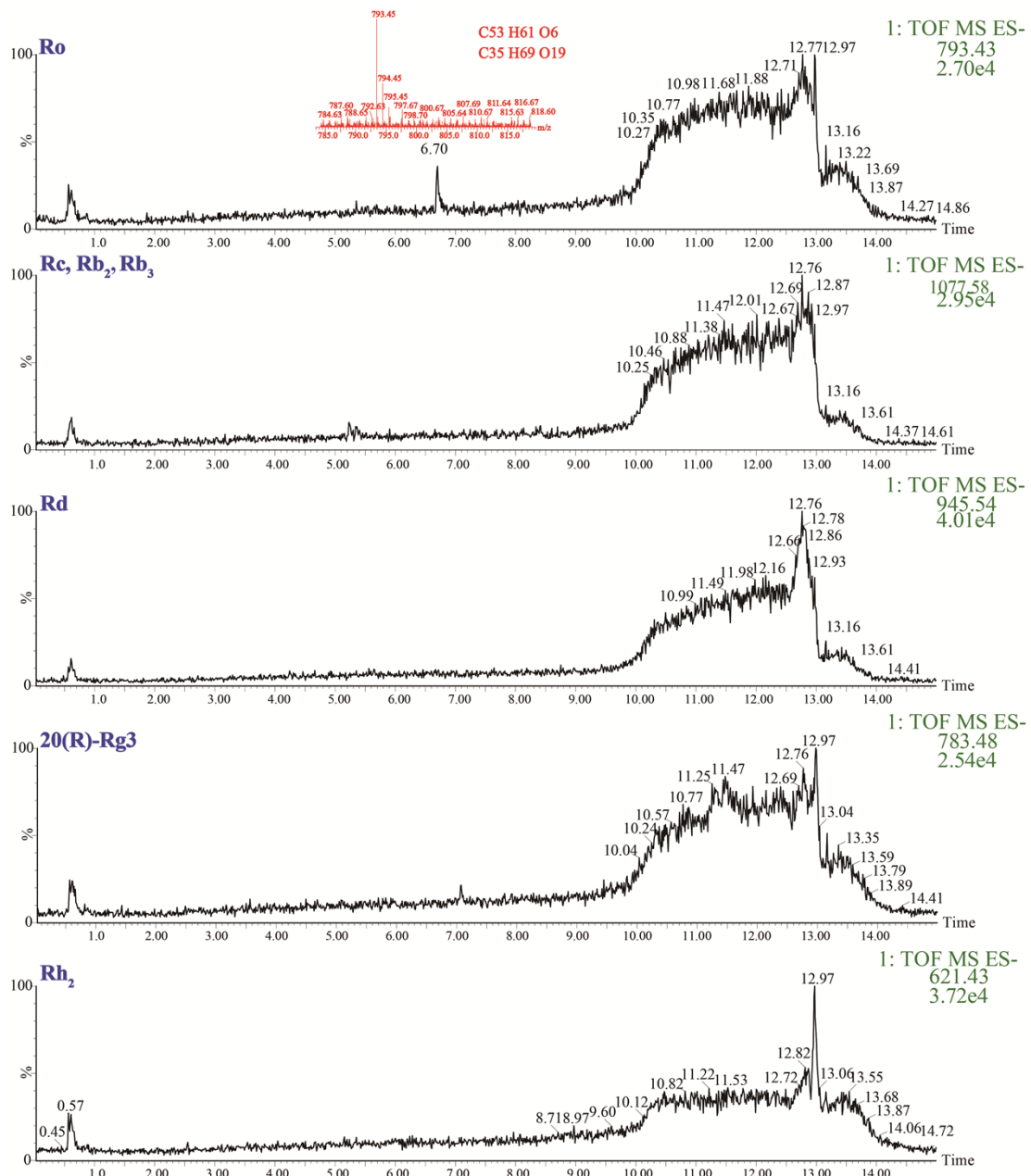


Fig. S1. Continued.