

Supplementary data

Structural elucidation and anti-nonalcoholic fatty liver disease activity of *Polygonatum cyrtoneura* Hua polysaccharide

Wei Liu ^{a, 1}, Taili Shao ^{a, b, 1}, Lei Tian ^a, Zhengrui Ren ^a, Lan Gao ^a, Zhiyan Tang ^a, Zheng Fang
^a, Pingchuan Yuan ^{a, b}, Chunyan Liu ^{a, b}, Jikun Li ^c, Guodong Wang ^{a, b, *}, Jun Han ^{a, b, *}

^a Drug Research & Development Center, School of Pharmacy, Wannan Medical College,
Wuhu 241002, China

^b Anhui Provincial Engineering Research Center for Polysaccharide Drugs, Anhui
Provincial Engineering Laboratory for Screening and Re-evaluation of Active Compounds
of Herbal Medicines in Southern Anhui, Anhui Province Key Laboratory of Active
Biological Macromolecules, Wuhu 241002, China

^c School of Clinical Medicine, Wannan Medical College, Wuhu 241002, China

* Corresponding authors

E-mail addresses: wangguodong@wnmc.edu.cn (Guodong Wang), hanjun@wnmc.edu.cn
(Jun Han)

¹These authors contributed equally to this work.

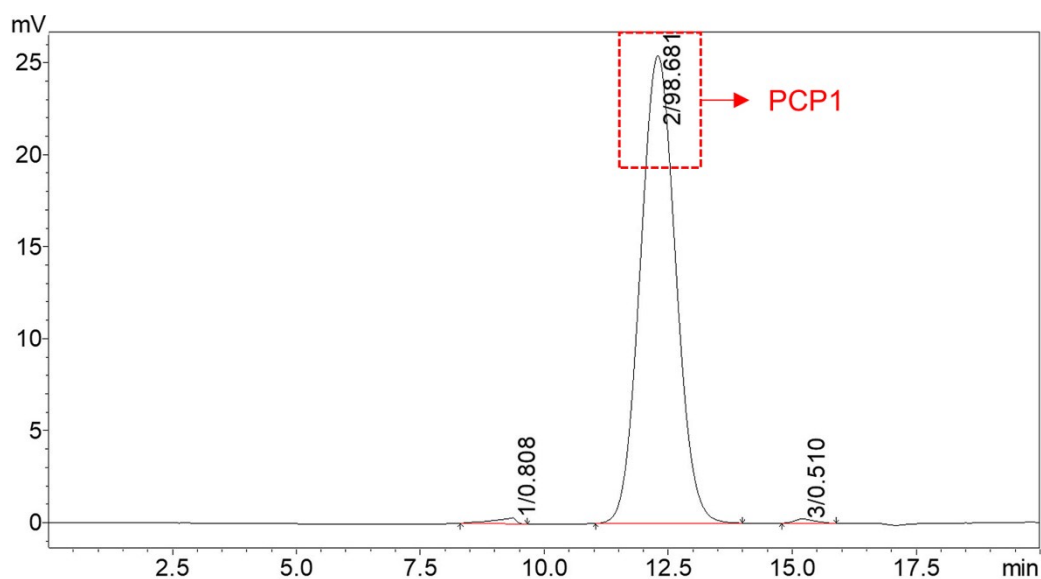


Fig. S1. High-performance gel permeation chromatography profile of PCP1. The symmetric narrow peak of PCP1 was ranked second in the figure, with an elution time of 12.17 min and a peak area ratio of 98.68%, indicating that PCP1 is a homogeneous polysaccharide.

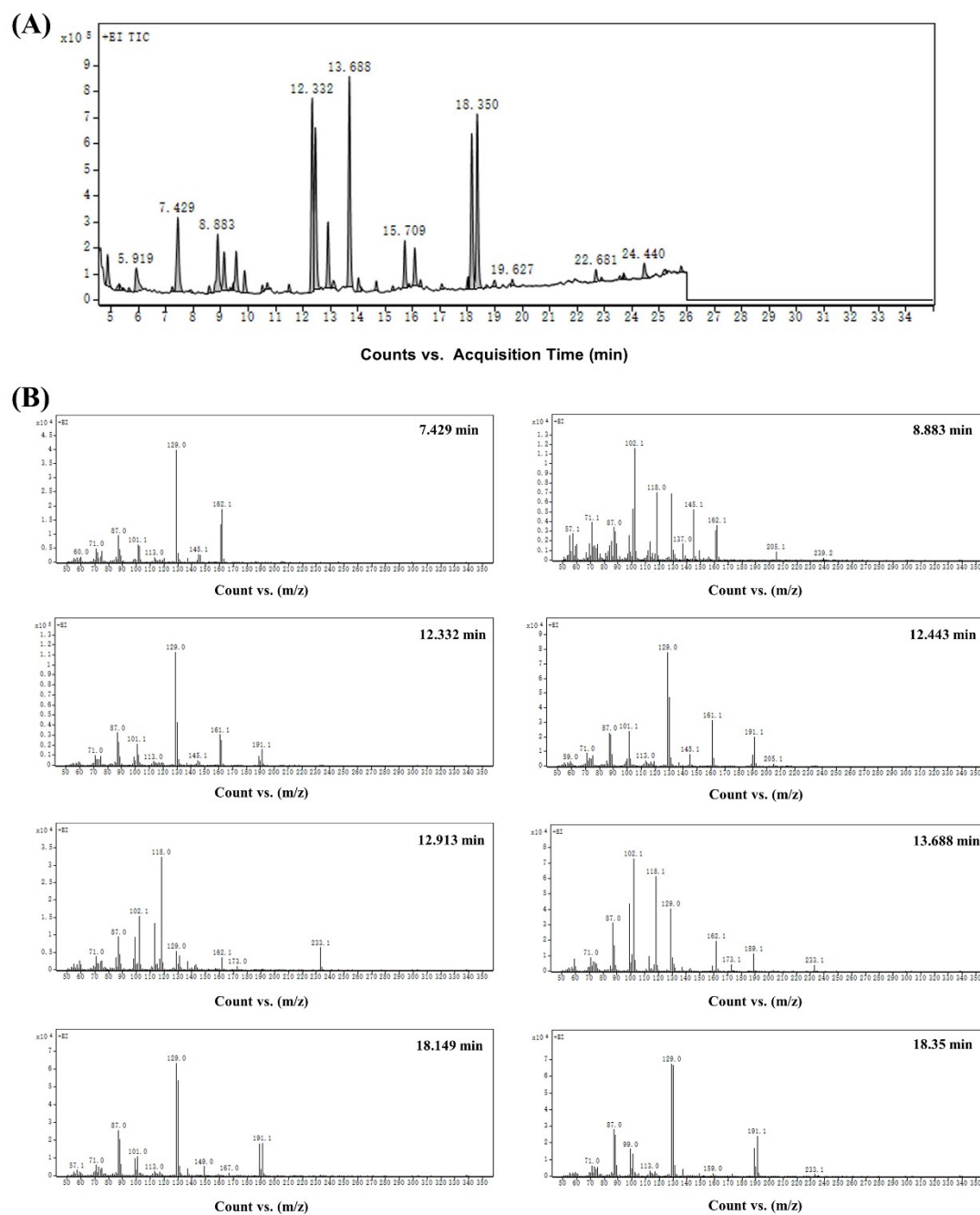


Fig. S2. Mass spectral signals of partially methylated alditol acetates of PCP1. (A) Total ion mass spectral signal. (B) Secondary mass spectral signal.