

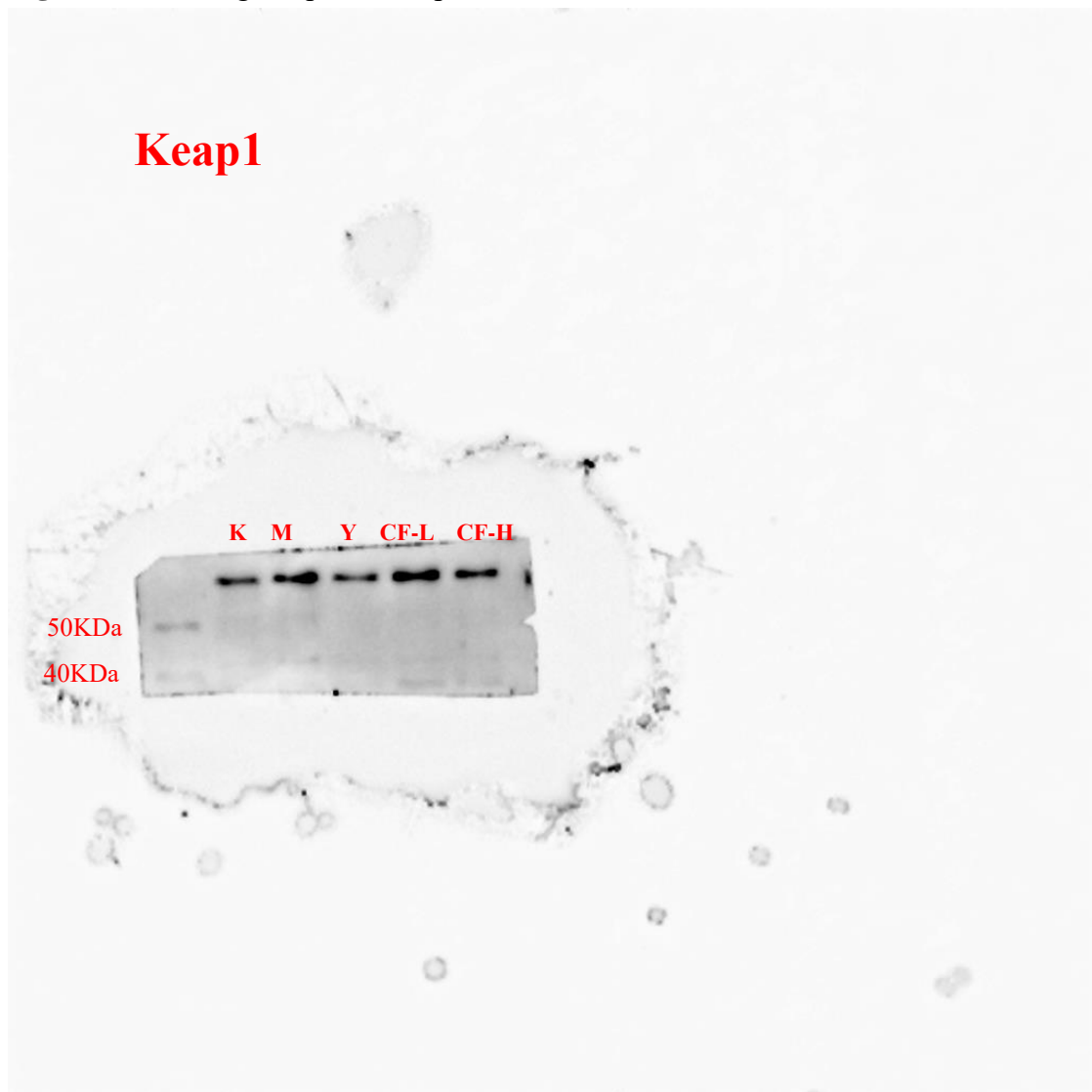
**Protective effects of confusoside, a dihydrochalcone glucoside from *Anneslea fragrans*, on acetaminophen-induced liver injury in mice by inhibiting oxidative stress, inflammation and apoptosis**

## Contents of Supporting Information

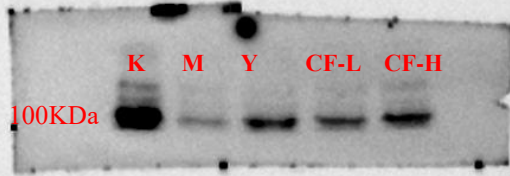
No.	Contents	Page
1	Figure S1 The $^1\text{H}$ NMR spectra of <b>1</b>	3
2	Figure S2 The $^{13}\text{C}$ and DEPT NMR spectra of <b>1</b>	3
3	Figure S3 The original picture of protein data	4-15



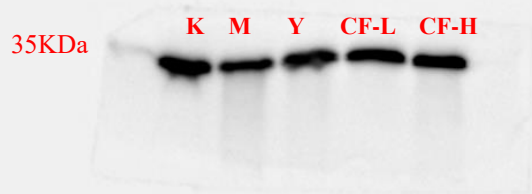
**Figure S3** The original picture of protein data



**Nrf2**



# NQO1



# HO-1

33KDa K M Y CF-LCF-H

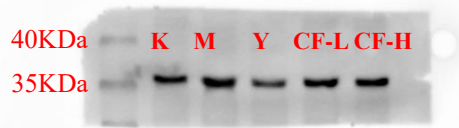


A Western blot analysis of HO-1 protein levels. The blot shows four lanes labeled K, M, Y, and CF-LCF-H. A molecular weight marker of 33KDa is indicated on the left. The bands are of similar intensity across all lanes, suggesting consistent protein levels.

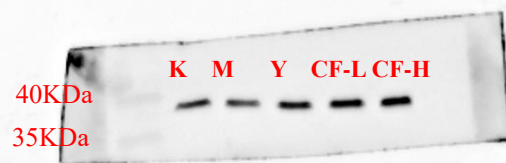




## P-P38



## P38



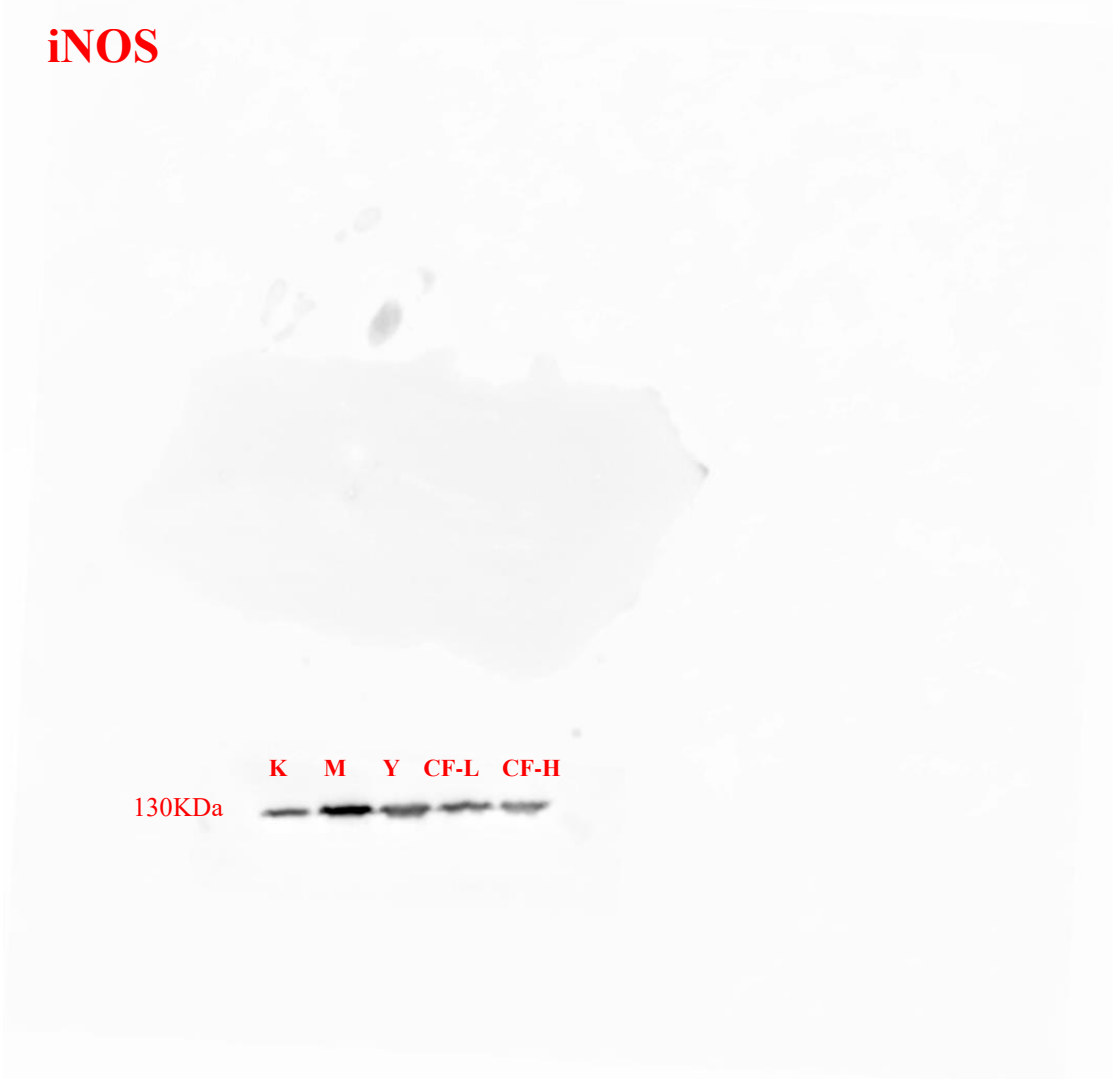
# COX-2

75KDa      K   M   Y   CF-L   CF-H

A Western blot image showing COX-2 protein levels. The blot is oriented vertically. On the left side, the molecular weight marker '75KDa' is indicated. The lanes are labeled 'K', 'M', 'Y', 'CF-L', and 'CF-H' from left to right. Each lane shows a single dark band at the 75KDa position, indicating the presence of COX-2 protein in all samples.

# iNOS

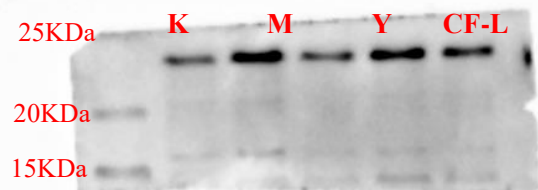
130KDa      K   M   Y   CF-L   CF-H



# Bcl2



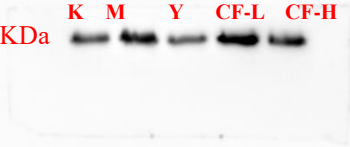
# Bax



## cleaved-caspase-9

17KDa

K M Y CF-L CF-H

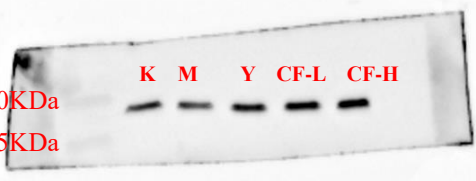


## caspase-9

40KDa

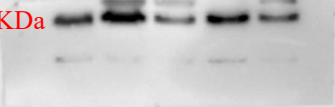
35KDa

K M Y CF-L CF-H



## cleaved-caspase-3

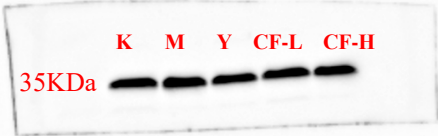
K M Y CF-L CF-H  
17KDa



A Western blot image showing five lanes labeled K, M, Y, CF-L, and CF-H. A red label '17KDa' is positioned to the left of the bands. Each lane contains a dark band at approximately the 17KDa mark, indicating the presence of cleaved-caspase-3 in all samples.

## caspase-3

K M Y CF-L CF-H  
35KDa



A Western blot image showing five lanes labeled K, M, Y, CF-L, and CF-H. A red label '35KDa' is positioned to the left of the bands. Each lane contains a dark band at approximately the 35KDa mark, indicating the presence of caspase-3 in all samples.