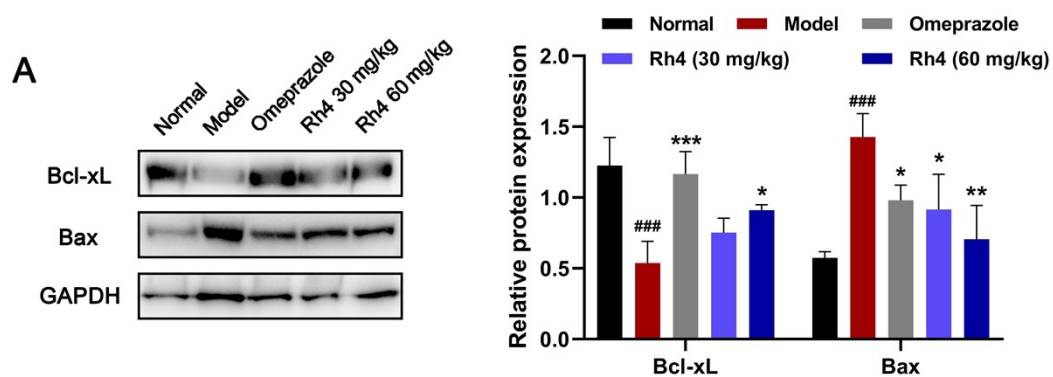
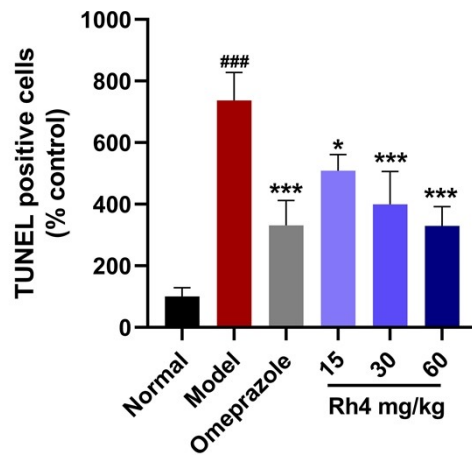


## Supporting Information



**Figure S1 The effect of ginsenoside Rh4 on the expression of Bcl-xL and Bax in gastric tissue.** Western blot showing the protein expression of Bcl-xL and Bax. GAPDH was used as the loading control and for band density normalization. The results are expressed as means  $\pm$  SD;  $n = 5$ ; # $P < 0.05$ , ## $P < 0.01$ , ### $P < 0.001$  compared with the normal group; \* $P < 0.05$ , \*\* $P < 0.01$ , \*\*\* $P < 0.001$  compared with the model group.



**Figure S2 Quantification of TUNEL-positive cell density in the in gastric tissues.** The results are expressed as means  $\pm$  SD;  $n = 5$ ; # $P < 0.05$ , ## $P < 0.01$ , ### $P < 0.001$  compared with the normal group; \* $P < 0.05$ , \*\* $P < 0.01$ , \*\*\* $P < 0.001$  compared with the model group.