

Fig. S1 Approval document of the D-galactose experimental study.

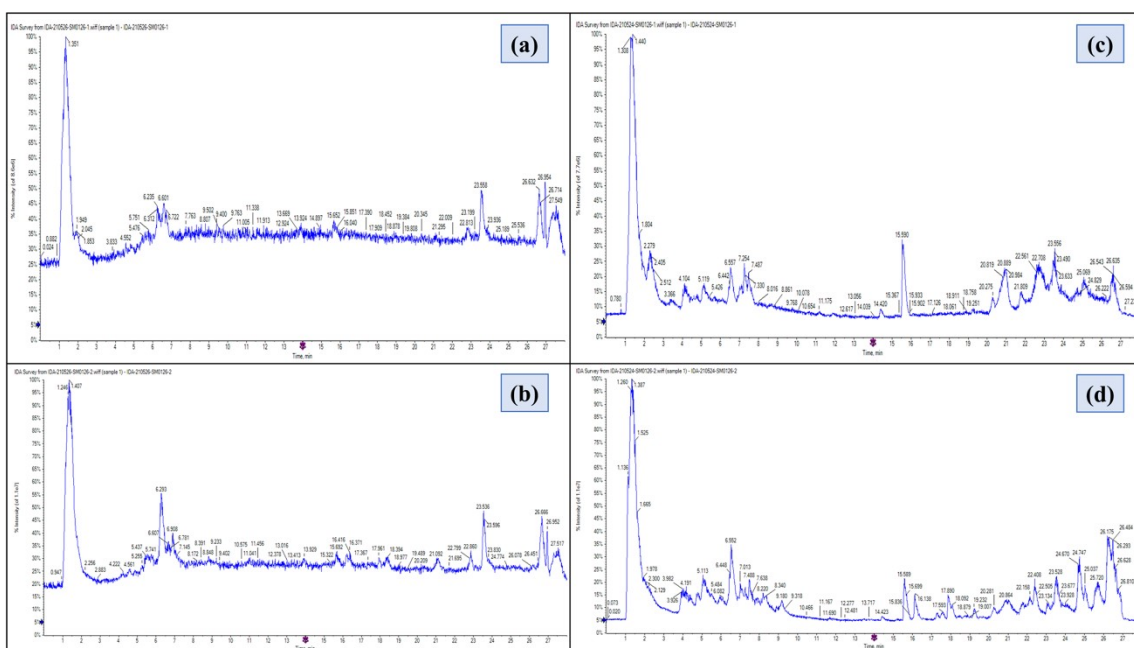


Fig. S2 Total ion chromatograms of (a) OPE in the negative ionization mode, (b) OCE in the negative ionization mode, (c) OPE in the positive ionization mode and (d) OCE in the positive ionization mode. OPE: OFI fruit peel ethanolic extract; OCE: OFI cladodes' ethanolic extract.