

Citrate-coated cobalt ferrite nanoparticles for the nano-enabled biofortification of wheat

Yazmín Stefani Perea-Vélez^a, Rogelio Carrillo González^a, Ma. del Carmen A. González-Chávez^{a*}, Jaco Vangronsveld^{b,c}, Iván Ortiz Monasterio^d, Daniel Tapia Maruri^e

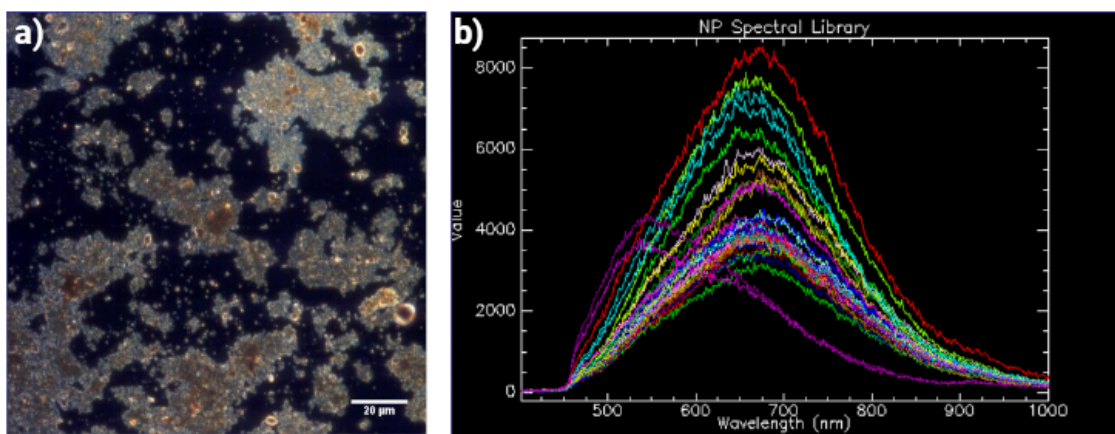


Figure S1 Hyperspectral microscopy imaging analysis of citrate-coated CoFe_2O_4 NPs. a) Enhanced darkfield optical image (60x) of NPs, and b) their spectral library.