

## Supplementary materials

**Table S1** The basic information of volunteers.

**Fig. S1** The chromatograms of monosaccharide constituents of LLJP and HLJP.

**Fig. S2** The chromatograms of the molecular weight of LLJP and HLJP.

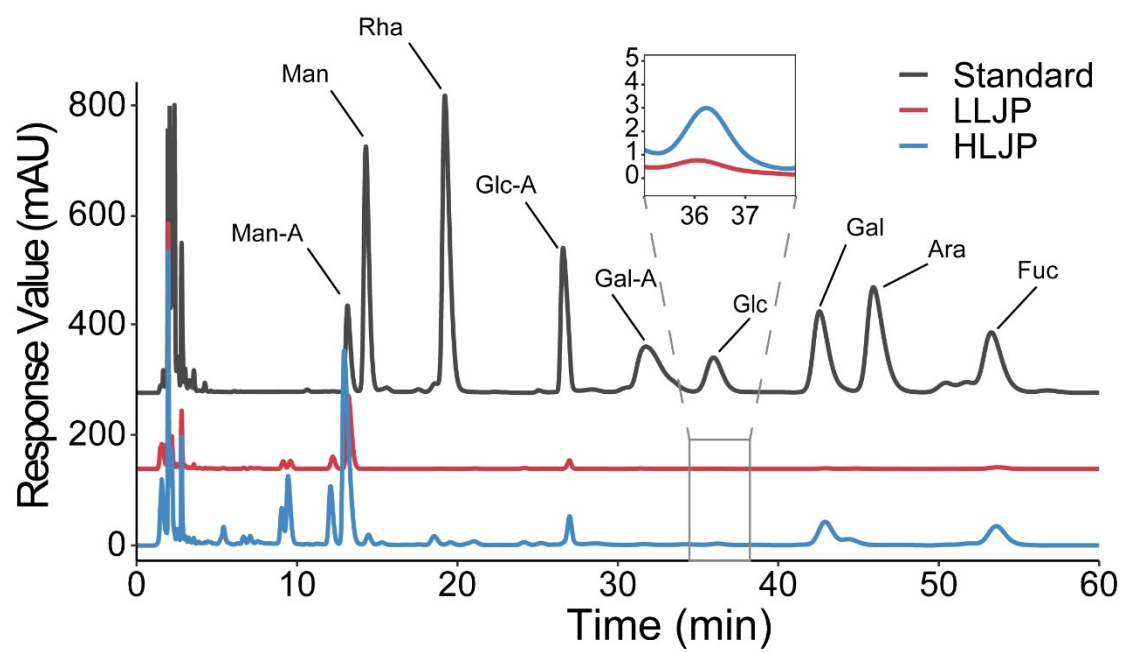
**Fig. S3** The contents of SCFAs in different groups and times during *in vitro* fermentation.

**Fig. S4** The changes in gut microbiota composition. (A) The relative abundance of the main taxa at the phylum level. (B) Firmicutes/Bacteroidetes ratio. \* $p < 0.05$  and \*\* $p < 0.01$ , compared with the HC group. ### $p < 0.01$ , the LLJP group compared with the HLJP group.

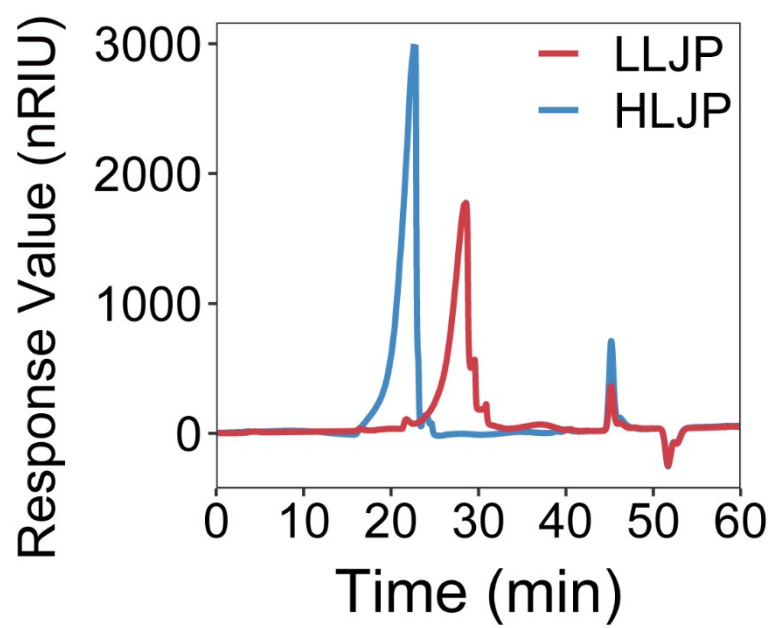
**Table S1**

The basic information of volunteers.

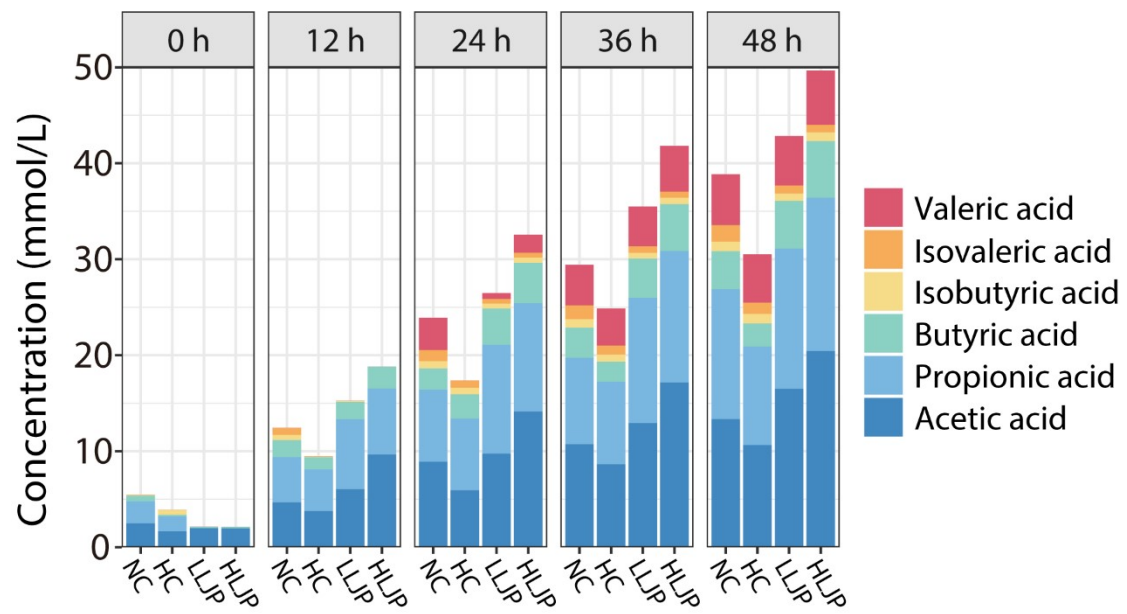
	volunteers with hyperlipidemia				healthy volunteers			
	male	male	female	female	male	male	female	female
Sex								
Age	34	39	35	36	33	35	32	36
Height (cm)	170	168	165	162	163	178	158	160
Weight (kg)	75	66	58	56	62	75	50	55
TC (mmol/L)	6.31	6.03	5.26	7.14	5	4.98	4.60	3.94
TG (mmol/L)	0.87	1.23	1.57	1.08	1.45	0.91	0.61	1.55
HDL-C (mmol/L)	1.10	1.41	1.25	1.40	1.42	1.29	1.44	1.67
LDL-C (mmol/L)	4.49	3.91	3.45	4.90	2.70	3.20	2.56	2.36



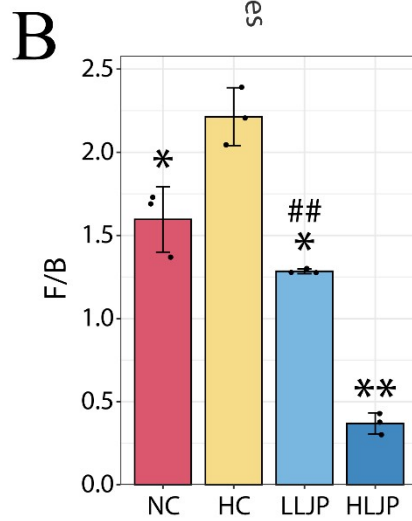
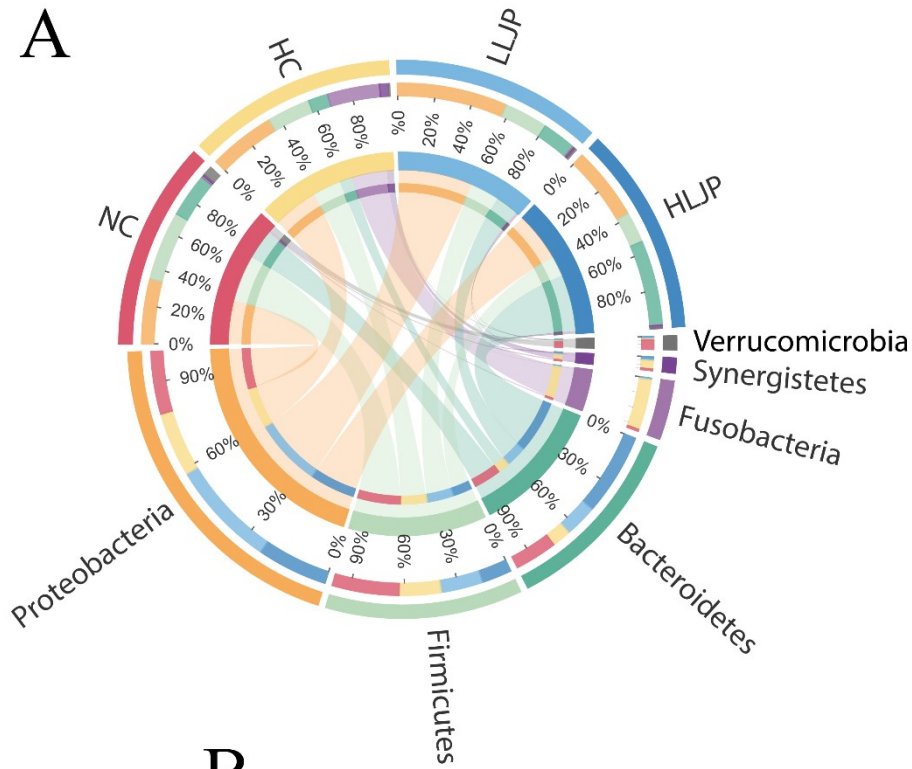
**Fig. S1** The chromatograms of monosaccharide constituents of LLJP and HLJP.



**Fig. S2** The chromatograms of the molecular weight of LLJP and HLJP.



**Fig. S3** The contents of SCFAs in different groups and times during *in vitro* fermentation.



**Fig. S4** The changes in gut microbiota composition. (A) The relative abundance of the main taxa at the phylum level. (B) Firmicutes/Bacteroidetes ratio. \* $p < 0.05$  and \*\* $p < 0.01$ , compared with the HC group. ## $p < 0.01$ , the LLJP group compared with the HLJP group.