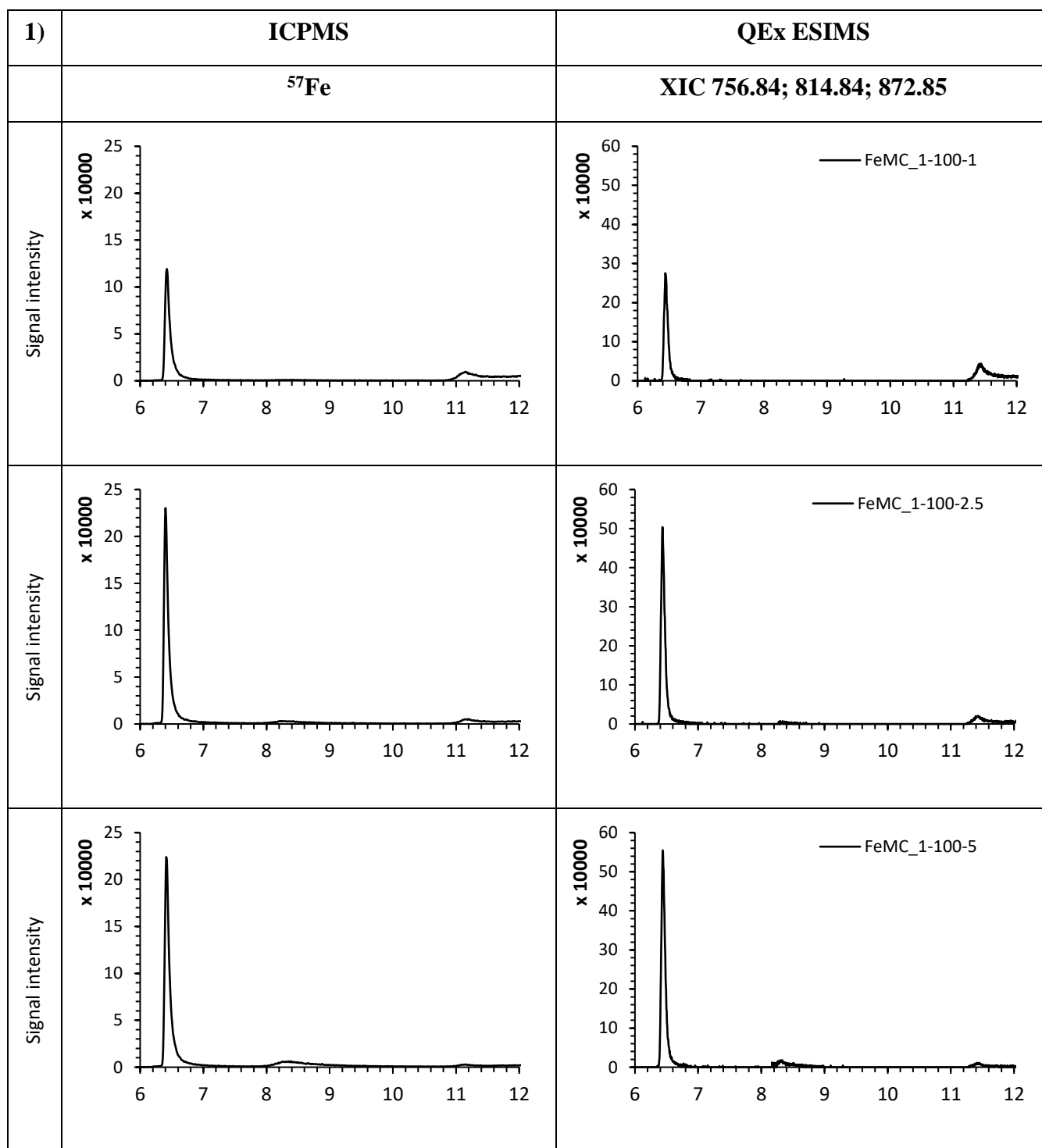
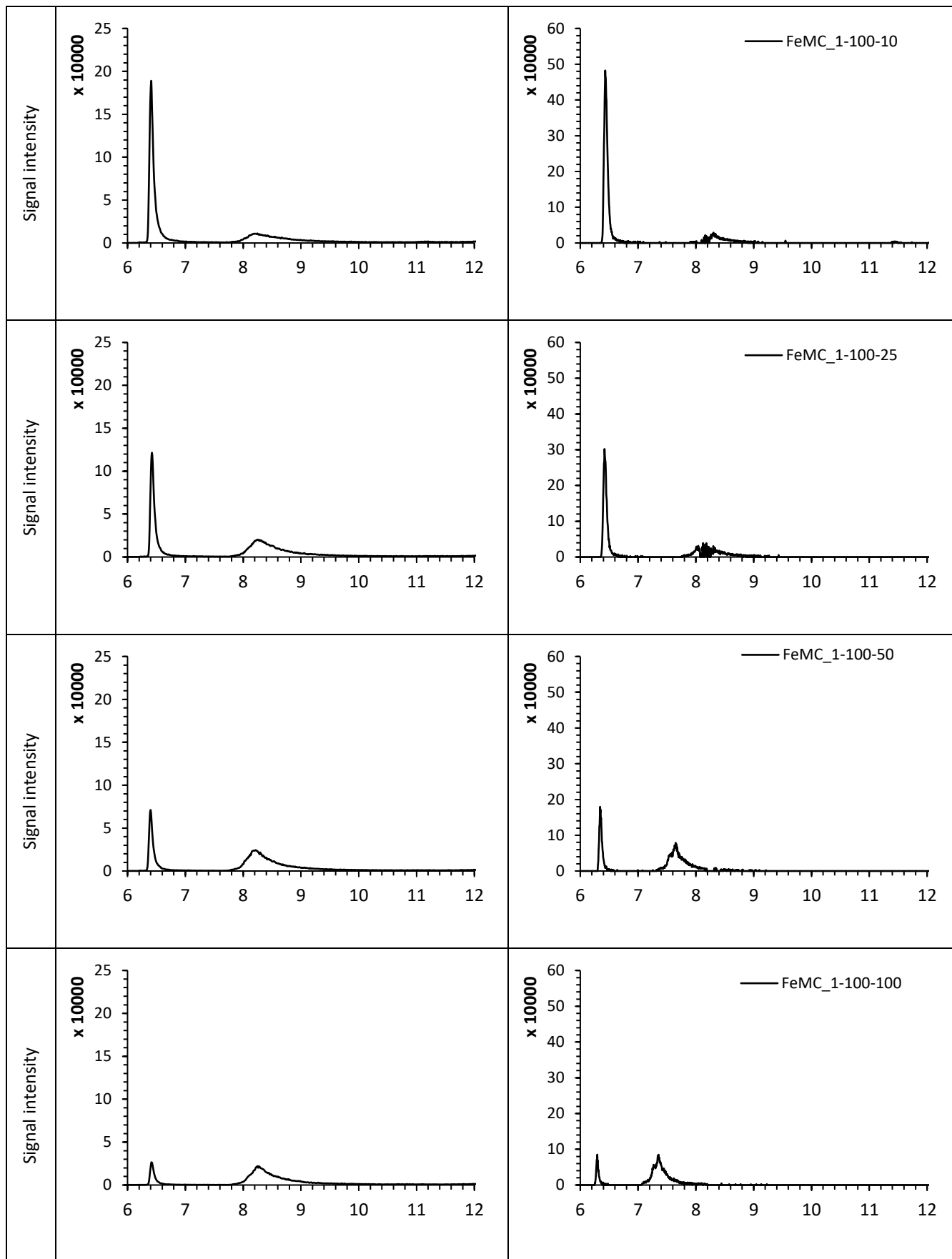


SUPPLEMENTARY INFORMATION

Quantitative determination of iron citrate/malate complexes by isotope-dilution hydrophilic interaction liquid chromatography - electrospray MS/inductively coupled plasma MS.





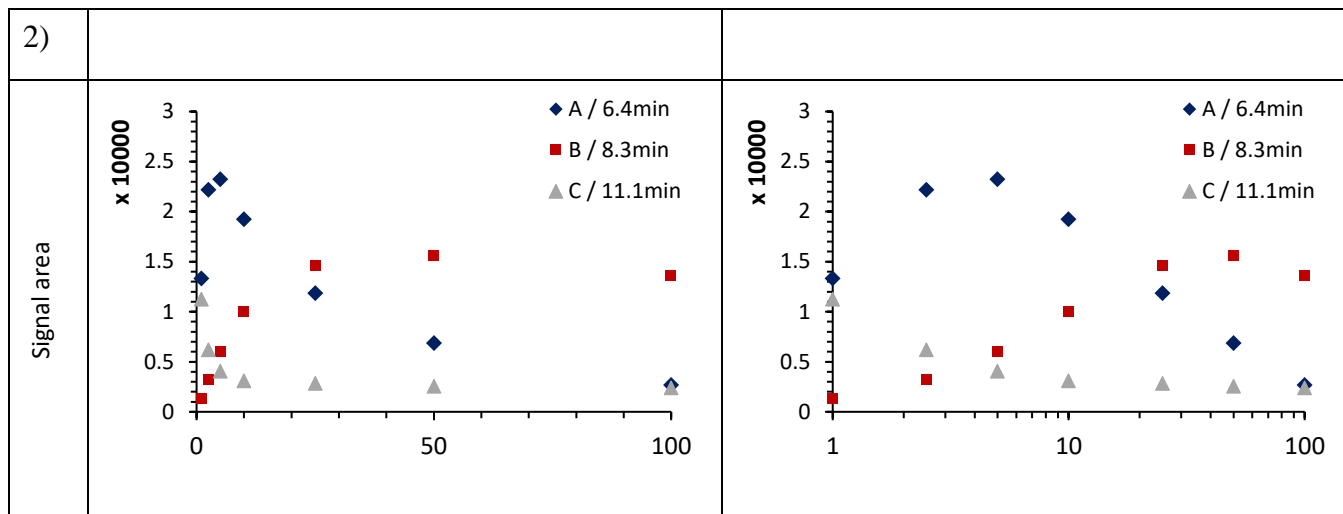


Figure SI-1. 1) Detection of ^{57}Fe citrate/malate complexes by HILIC – ICP MS (left panels), and ESI MS (combined extracted ion chromatogram of A - $\text{Fe}_3\text{Cit}_2\text{Mal}_2$, B - $\text{Fe}_3\text{Cit}_3\text{Mal}_1$, C - $\text{Fe}_3\text{Cit}_1\text{Mal}_3$ ions). $100 \mu\text{g L}^{-1}$ of ^{57}Fe added. The Fe/Mal/Cit ratios are given in each of the individual panels. 2) Changes in the morphology of the chromatograms for various Fe: Mal: Cit ratios expressed in the areas of individual peaks as a function of citric acid concentration. Data based on HILIC ICP MS.