

Antibody mediated cotton-archetypal substrate for enumeration of circulating tumor cells and chemotherapy outcome in 3D tumors

Smriti Arora,^{†a} Alain D'Souza,^{†a,d} Gourishankar Aland,^{a,d} Narendra Kale,^a Bhagwat Jadhav,^{a,d} Trupti Kad,^{a,d} Pankaj Chaturvedi,^c Balram Singh,^{a*} Jayant Khandare^{a,b,d,e*}

^a Actorius Innovations and Research, Pune, 411057, India

^b Actorius Innovations and Research Co, Simi Valley, USA

^c Department of Head and Neck Surgical Oncology, Tata Memorial Hospital, Mumbai, 400012, India

^d OneCell Diagnostics, Pune, 411057, India

^e OneCell Dx Inc, Cupertino, CA 95014, USA

[†] Authors contributed equally.

*jayant@actorius.co.in

*balram.rathi22@gmail.com

Electronic Supplementary Information

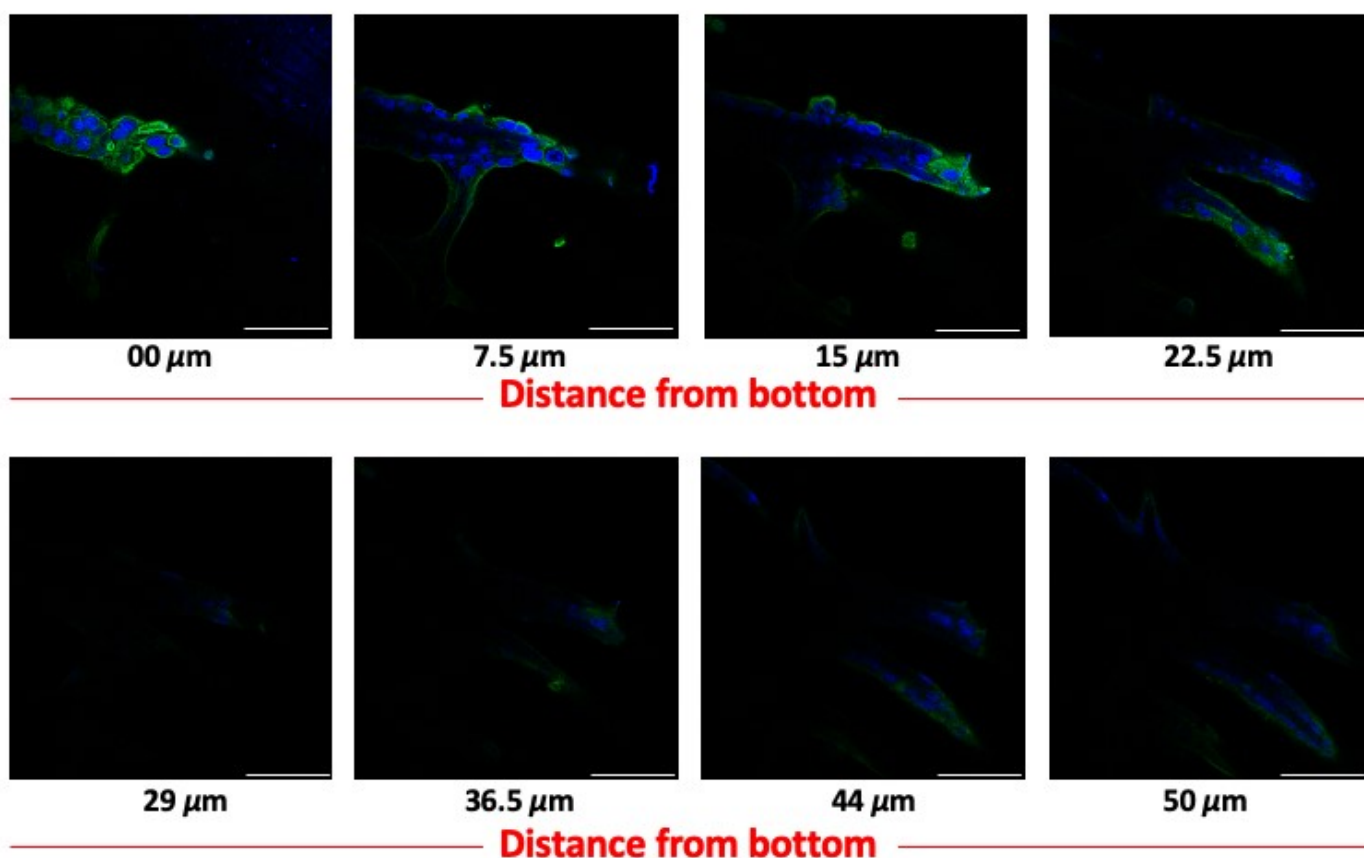


Figure S1. CMS₁ grown 3D tumor CSLM picture montage of image stacks/slices obtained in the z-stack mode. Focal planes at indicated depths from the bottom of the tumor (0-50 μm) were obtained along the z-axis. The above images are representative images chosen from a total of 100 slices that made up the CSLM images represented in manuscript Figures 5 and 6 respectively. Scale bar depicts 100 μm .

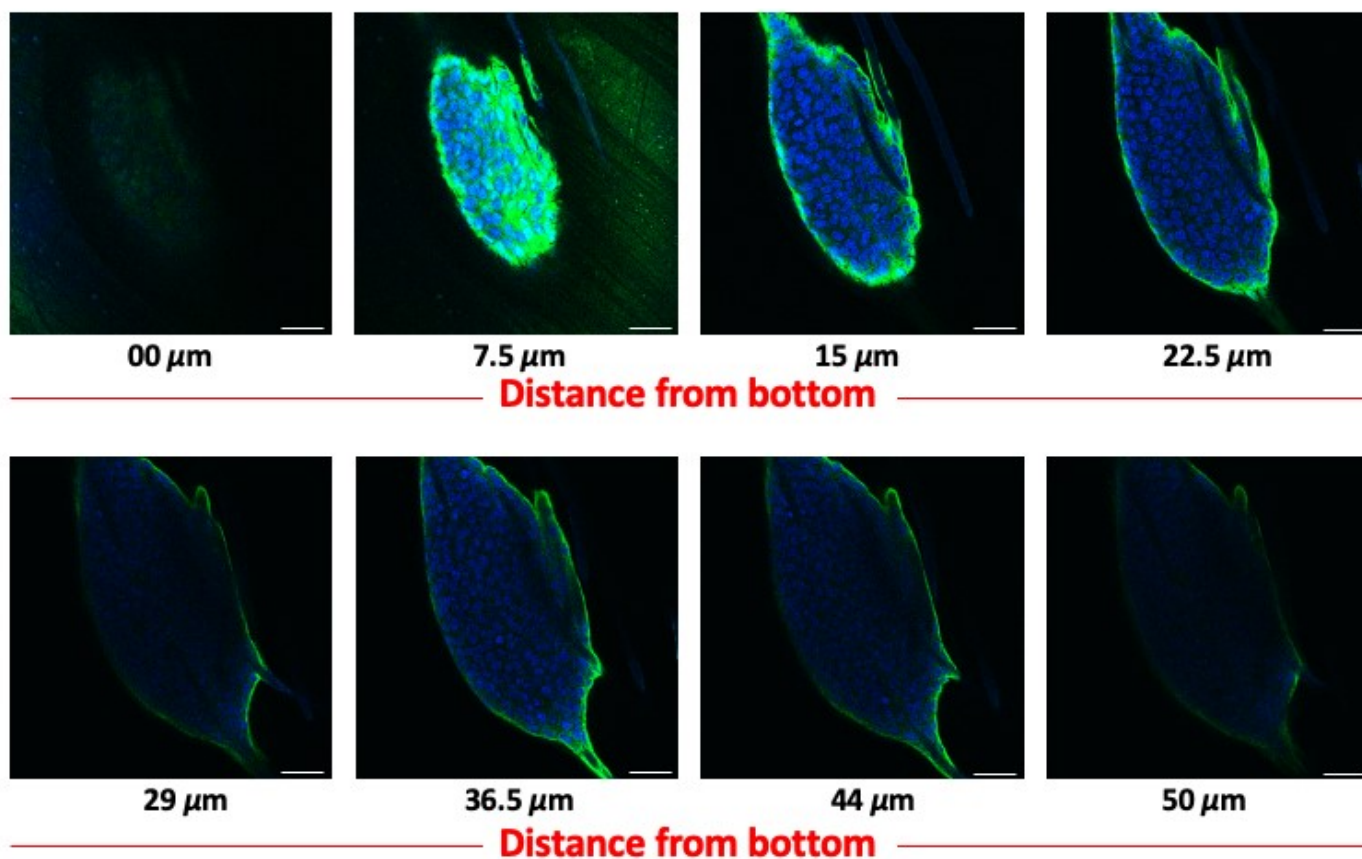


Figure S2. CMS₂ grown 3D spheroid CSLM picture montage of image stacks/slices obtained in the z-stack mode. Focal planes at indicated depths from the bottom of the tumor (0-50 μm) were obtained along the z-axis. The above images are representative images chosen from a total of 100 slices that made up the CLSM images represented in manuscript Figures 5 and 6 respectively. Scale bar depicts 50 μm .