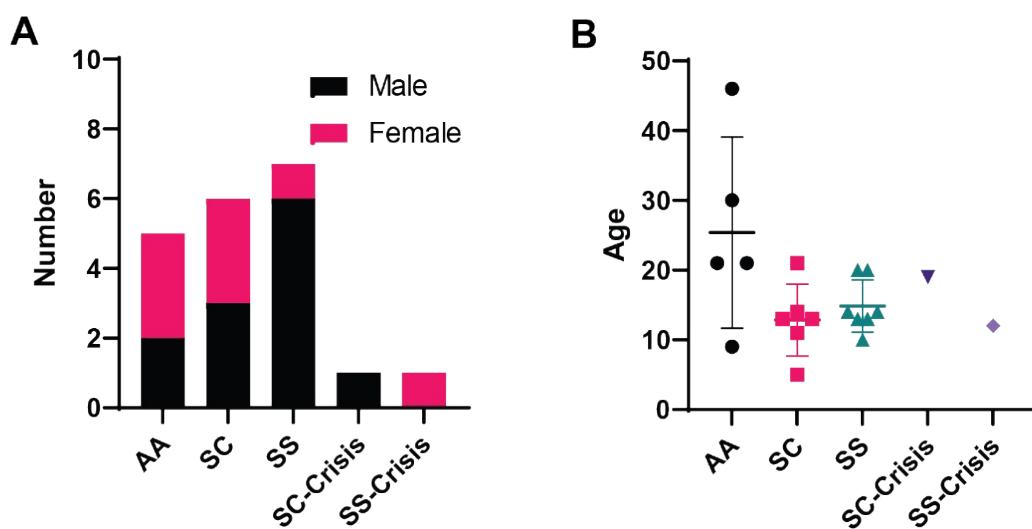
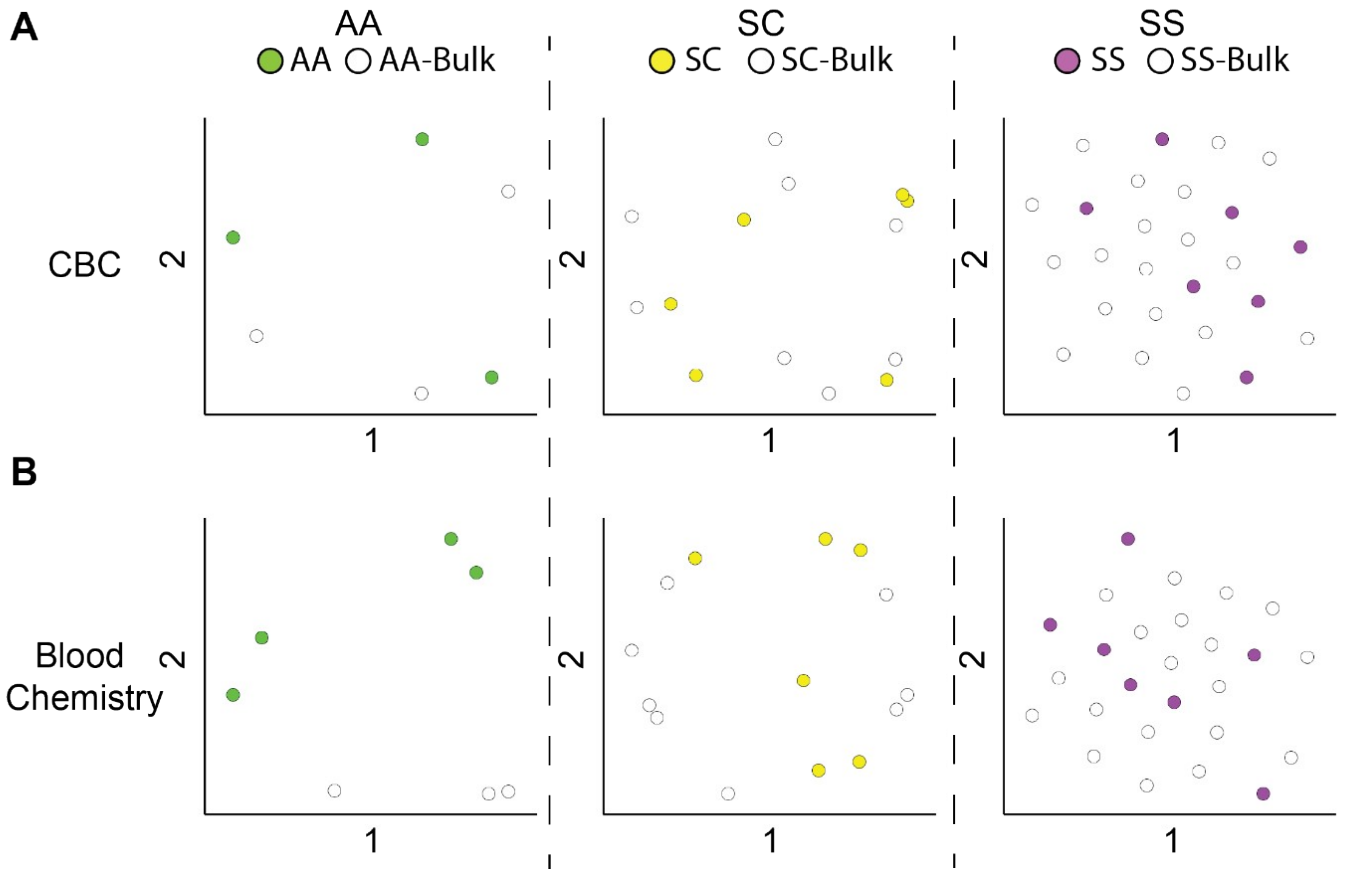


## Supplementary



**Supplementary Figure 1. Gender and age information.** (A) The bar plot shows patient gender

information. (B) The scatter plot shows patient age information.



**Supplementary Figure 2. Sample comparison.** The t-SNE plots generated by CBC (A) and blood chemistry (B) data show the distribution of all samples of each group (left: AA, middle: SC, right: SS). The samples used for the device experiments are highlighted in solid colors and additional samples from each group are in open (white) circles.

**Supplementary Video 1. Loading video of a AA sample.** The video shows the loading of an AA sample into the device at 2min.

**Supplementary Video 2. Loading video of an SC sample.** The video shows the loading of an SC sample into the device at 2min.

**Supplementary Video 3. Loading video of an SS sample.** The video shows the loading of an SS sample into the device at 2min.