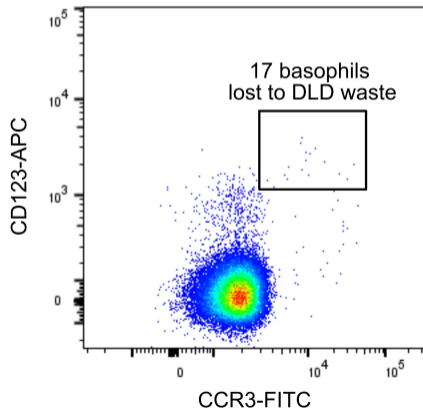


DLD waste from 600  $\mu\text{L}$  of  
washed blood  
(gated on  $\text{CD45}^+/\text{SSC}^{\text{low}}$ )



DLD waste from 100  $\mu\text{L}$  of  
unwashed whole blood  
(gated on  $\text{CD45}^+/\text{SSC}^{\text{low}}$ )

