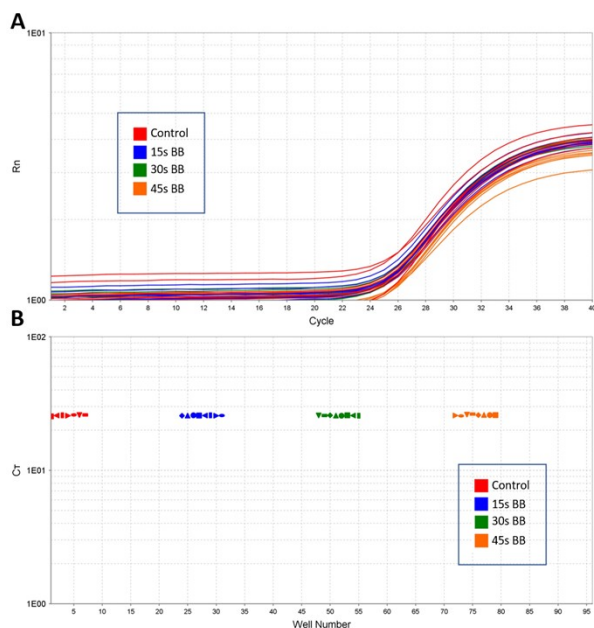


## Supplemental



### Supplemental Figure 1 – qPCR amplification of Bead-Beating produced DNA

(A) Consistent amplification is observed between the control (no bead-beating homogenization performed) and three separate durations of bead-beating homogenization – 15 seconds, 30 seconds, and 45 seconds ( $n=8$  for each). (B) Cycle threshold times (Ct) are very consistent, with no significant difference in amplification between the control and any of the samples that underwent bead-beating homogenization.

### Supplemental Video – Available online

This video depicts the BLENDER (with front acrylic cover removed) quickly reaching 3000 RPM before stopping.