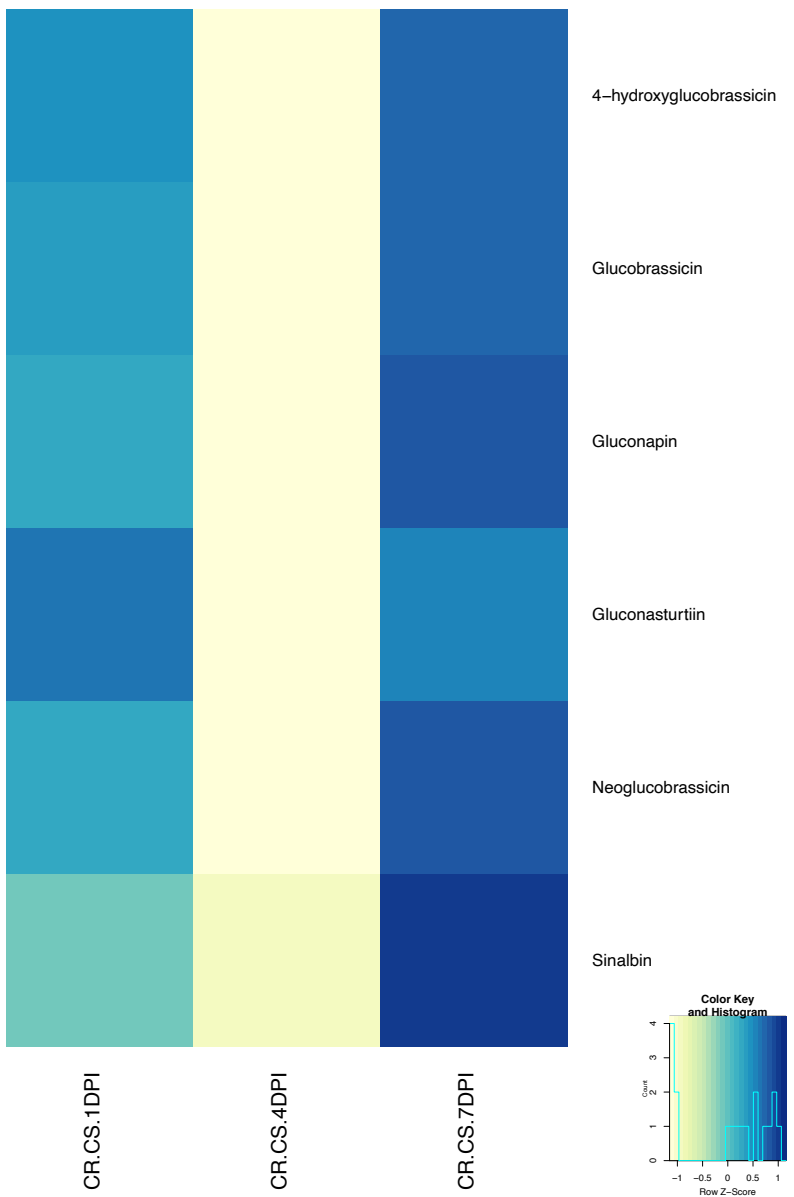
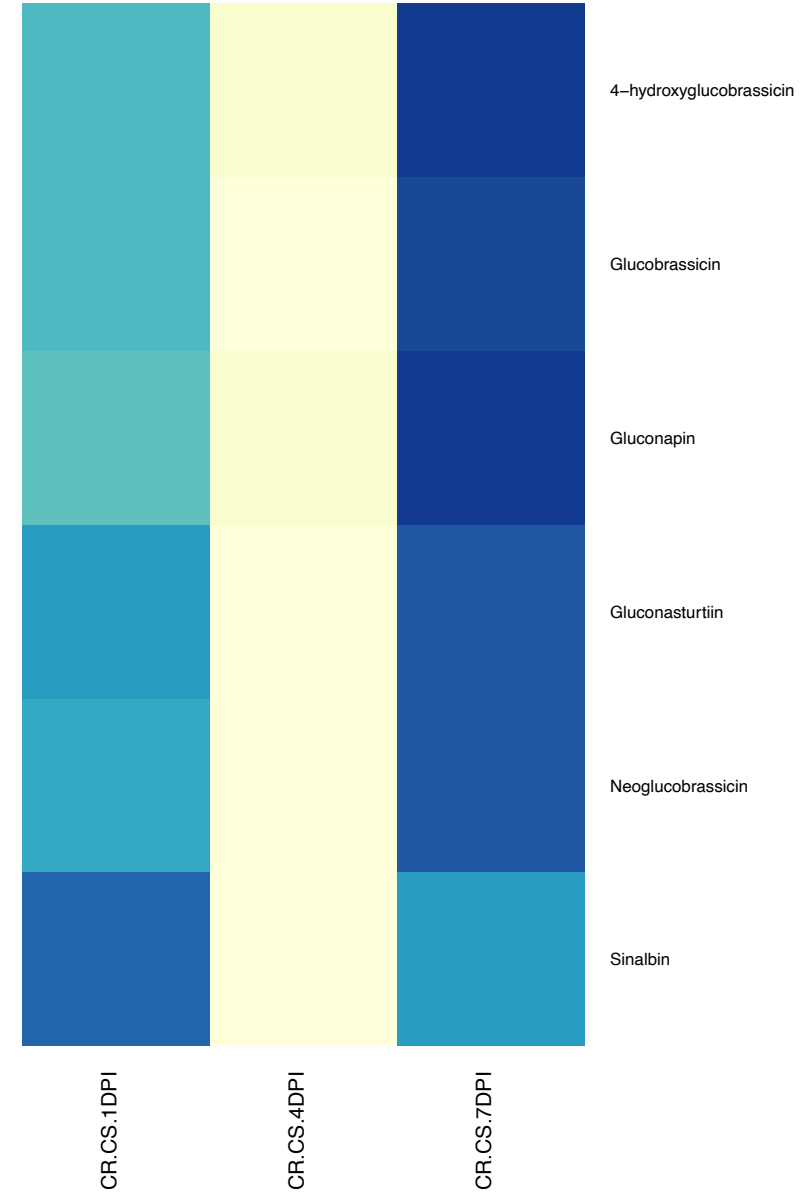


(a)



(b)



**Fig. S5** Glucosinolate-related metabolite accumulation at three different time points. (a) uninoculated group (b) Pathogen inoculated root tissues of clubroot-resistant (CR) and susceptible (CS) genotypes. Heatmaps show the log<sub>2</sub> fold changes between clubroot resistant (CR) and clubroot susceptible (CS), CR/CS, genotypes at 1-, 4-, and 7 DPI.