

Supplementary data

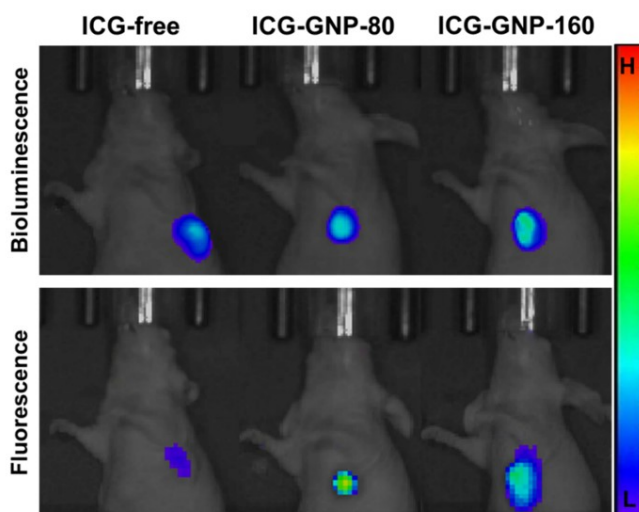


Fig. S1 Representative bioluminescence and fluorescence images of tumor-bearing mice. The bioluminescence was acquired after treating the mice with *D*-luciferin (150 mg/kg) for 15 min. The fluorescence was acquired 24 hours after administering ICG-free, ICG-GNP-80, or ICG-GNP-160 dosed at 2 mg/kg ICG.

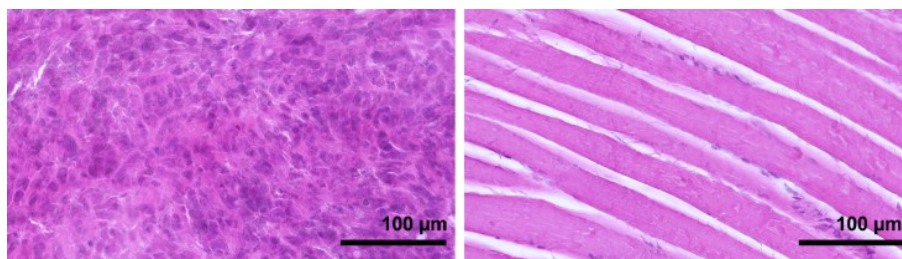


Fig. S2 Representative histological images of the resected tumor (left) and healthy muscle tissue (right) after H&E staining.

