

Supporting Information

K₂S₂O₈-glucose mediated oxidative coupling of alcohols with indoles for synthesis of Bis(indolyl)methanes in water

Harish K Indurthi^a, Samarpita Das^a, Amita Kumari^b, Deepak K Sharma^{*a}

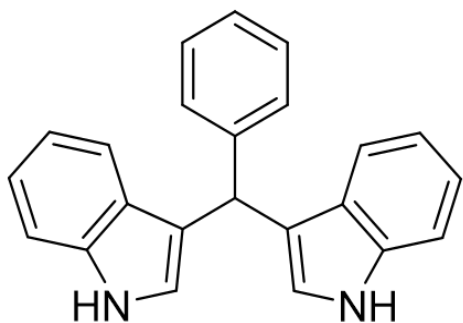
a. Department of Pharmaceutical Engg. And Tech., IIT-Banaras Hindu University, Varanasi, UP, 221005, Email id:

deepak.phe@itbhu.ac.in

b. CSIR-Institute of Himalayan Bioresource Technology, Palampur (H.P.) 176061

Table of Contents

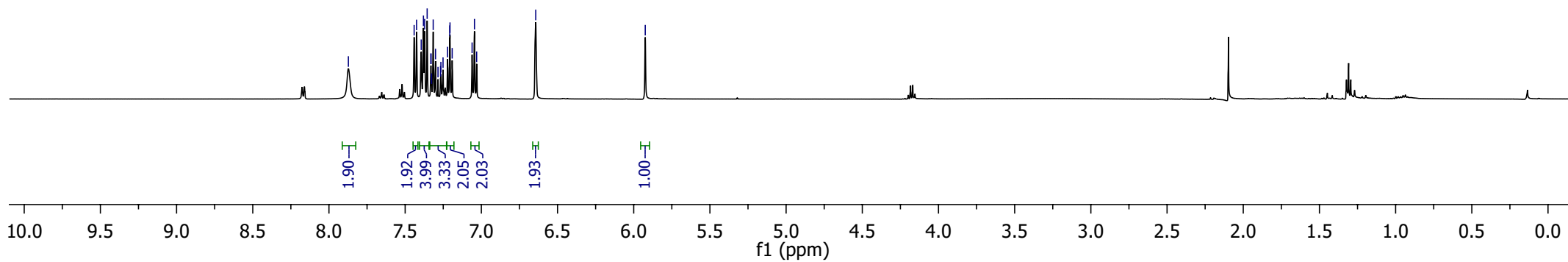
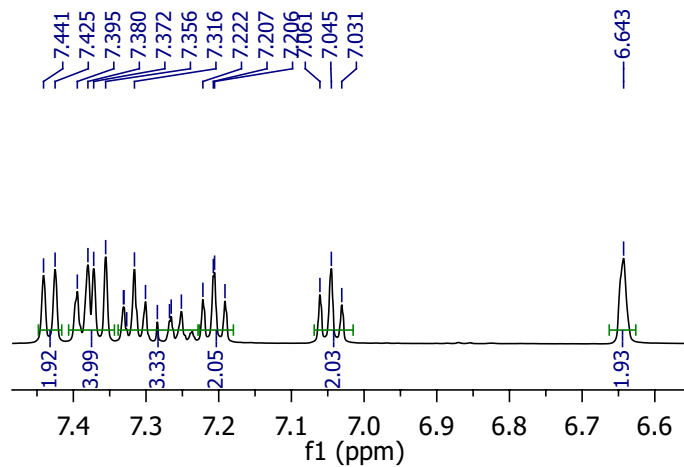
1.	¹ H and ¹³ C NMR Spectra.....	S2-S19
----	---	--------

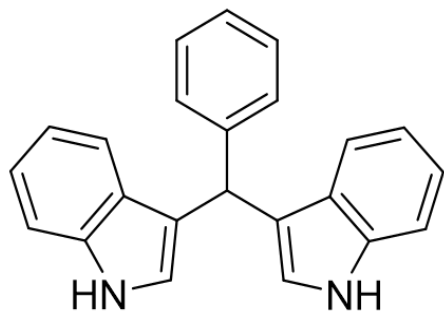


1a

¹H NMR, CDCl₃

7.873
7.441
7.425
7.380
7.372
7.356
7.316
7.206
6.643
5.924





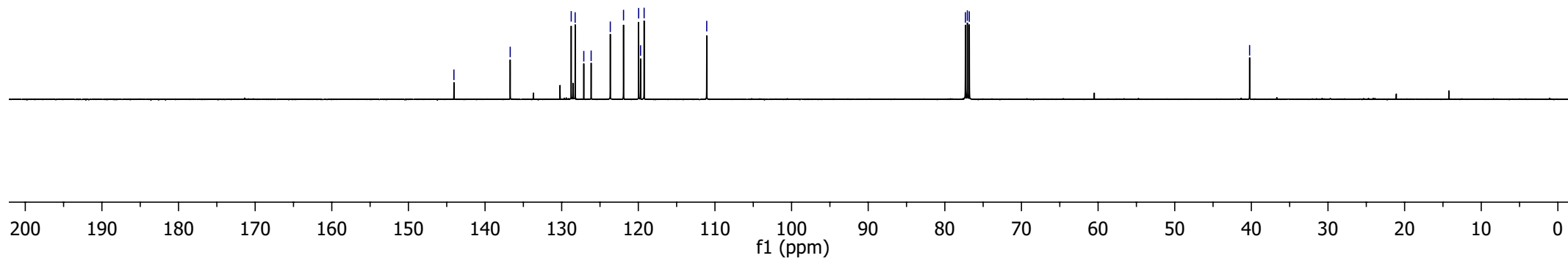
1a

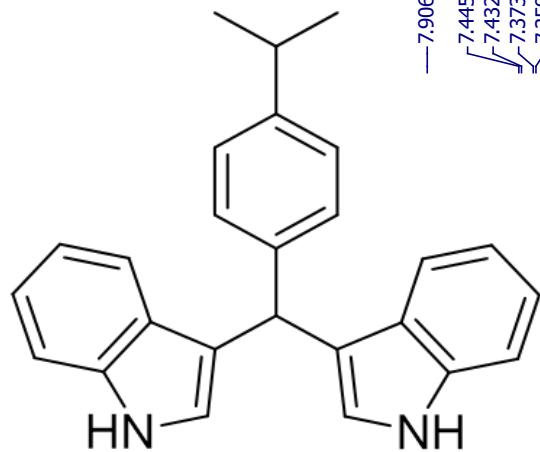
¹³C NMR, CDCl₃

—144.06
—136.72
128.76
128.24
127.11
126.16
123.66
121.93
119.96
119.71
119.24
—111.07

77.31
77.06
76.80

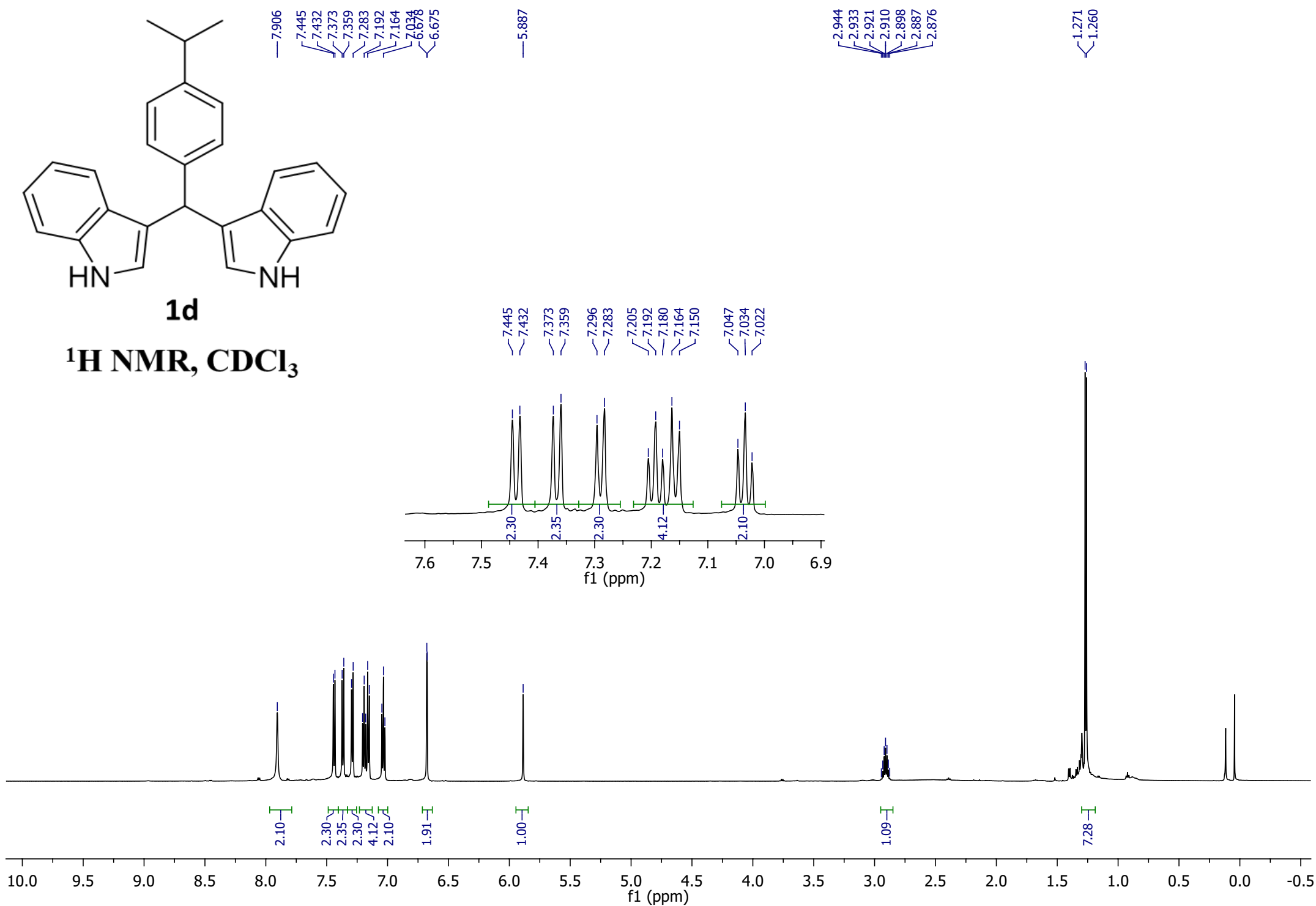
—40.23

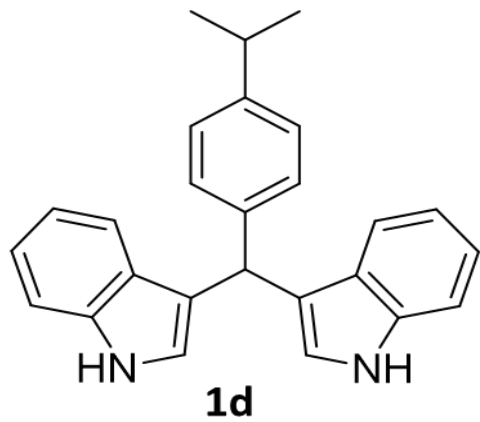




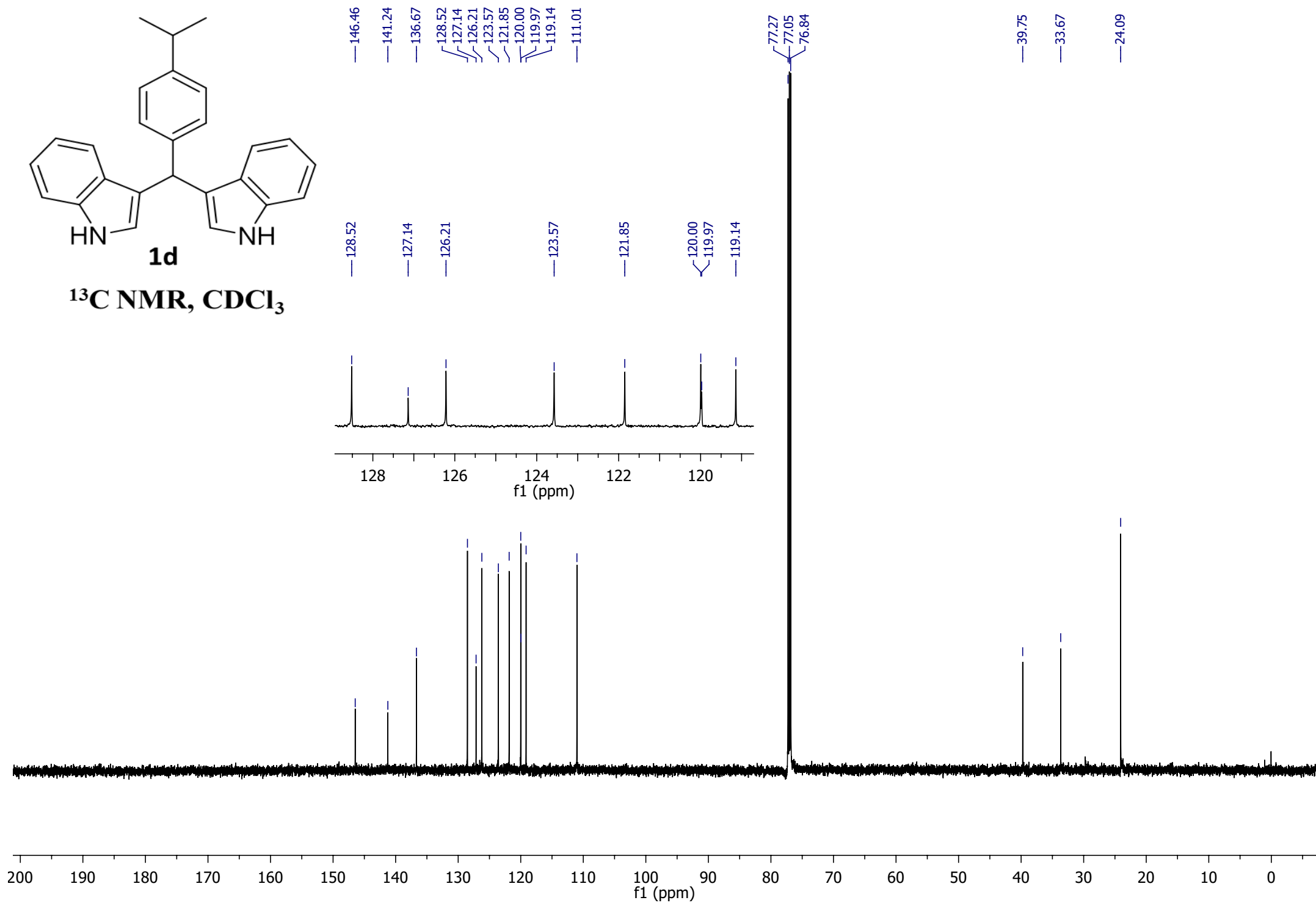
1d

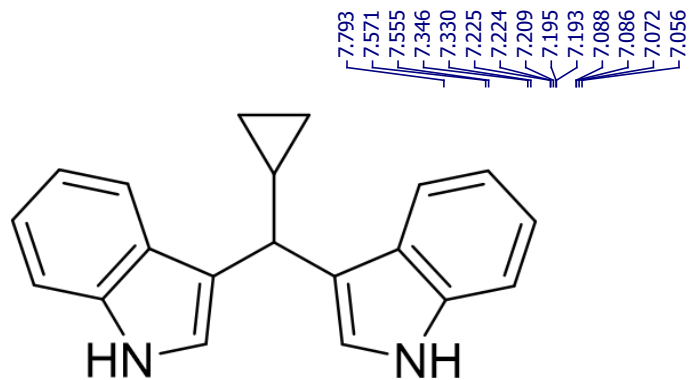
¹H NMR, CDCl₃





^{13}C NMR, CDCl_3





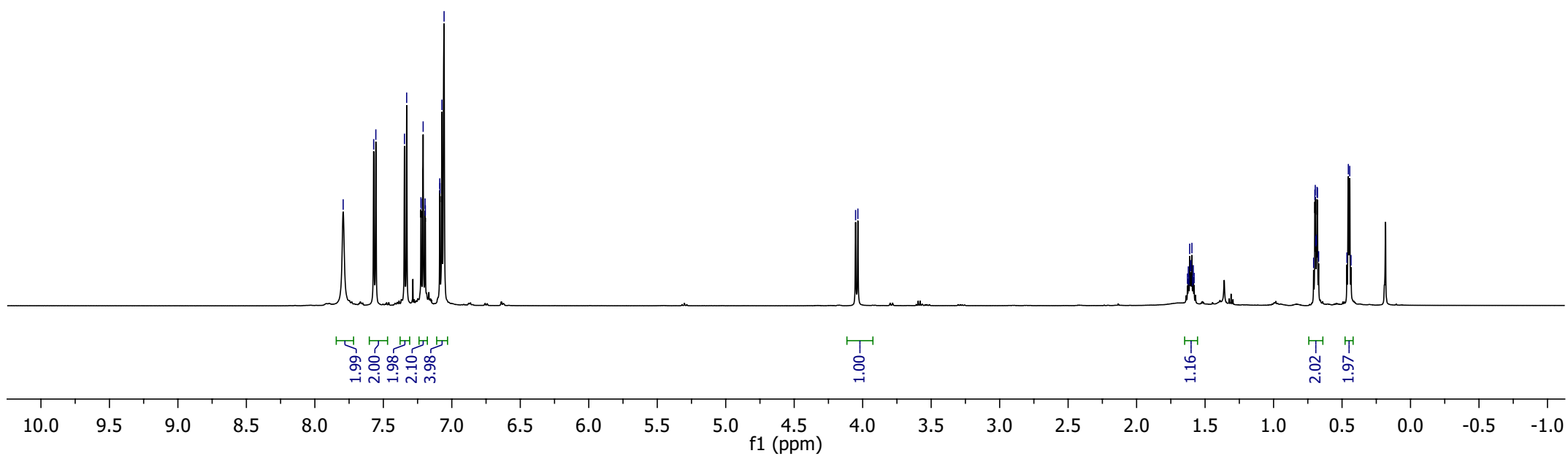
2d

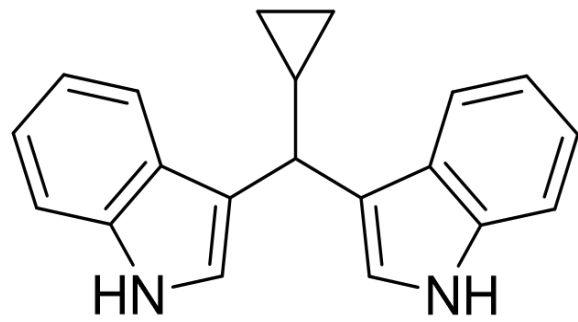
$^1\text{H NMR, CDCl}_3$

7.793
7.571
7.555
7.346
7.330
7.225
7.224
7.209
7.195
7.193
7.088
7.086
7.072
7.056

4.052
4.035

1.629
1.622
1.619
1.612
1.606
1.602
1.596
1.590
1.586
1.580
0.707
0.698
0.696
0.691
0.687
0.682
0.680
0.671
0.465
0.454
0.444
0.434





2d

^{13}C NMR, CDCl_3

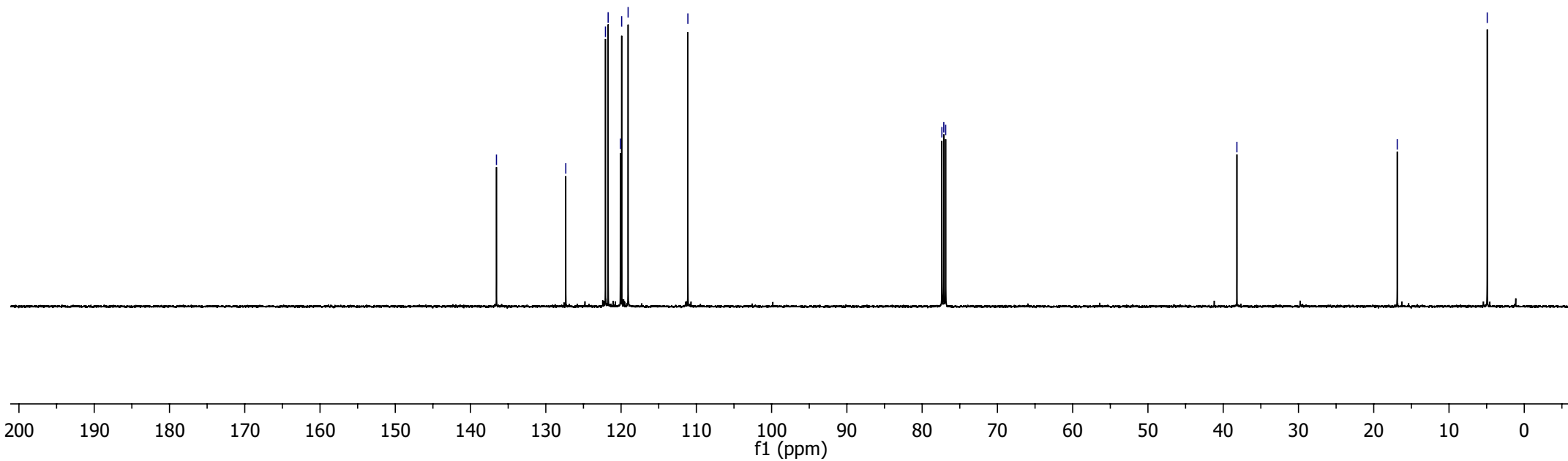
136.56
127.35
122.08
121.72
120.10
119.92
119.07
111.13

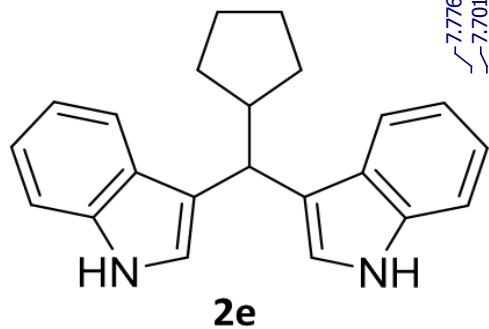
77.38
77.12
76.87

38.18

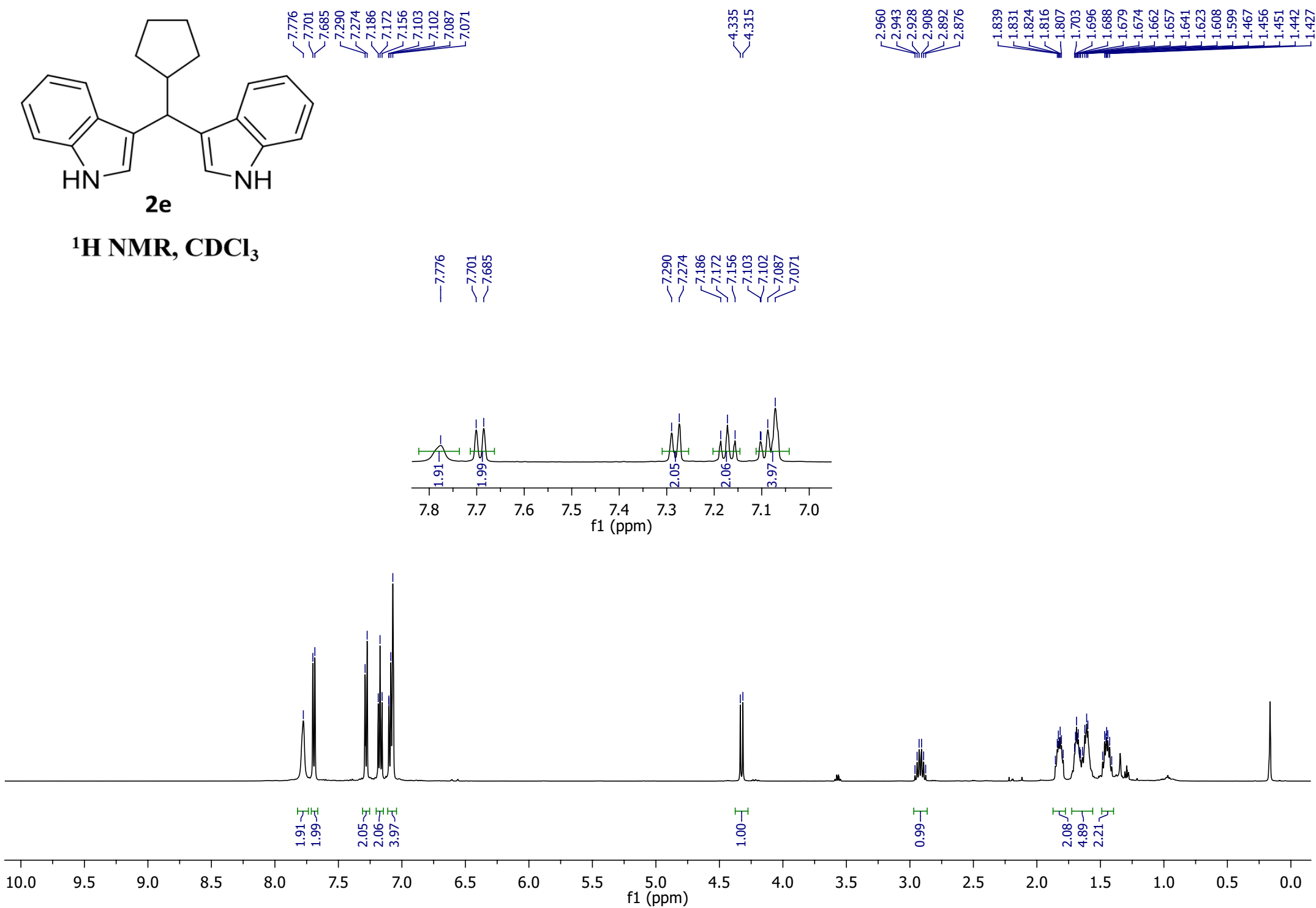
16.88

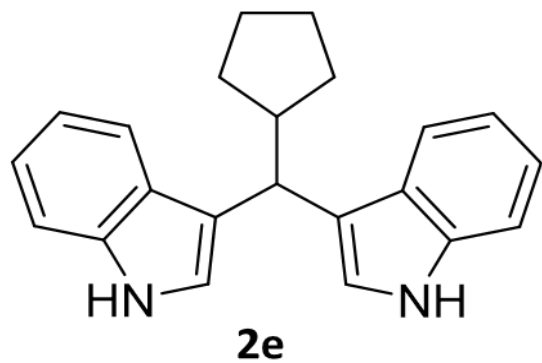
4.92





¹H NMR, CDCl₃





^{13}C NMR, CDCl_3

— 136.32
— 127.54
— 121.61
— 121.50
— 120.72
— 119.66
— 118.96
— 111.05

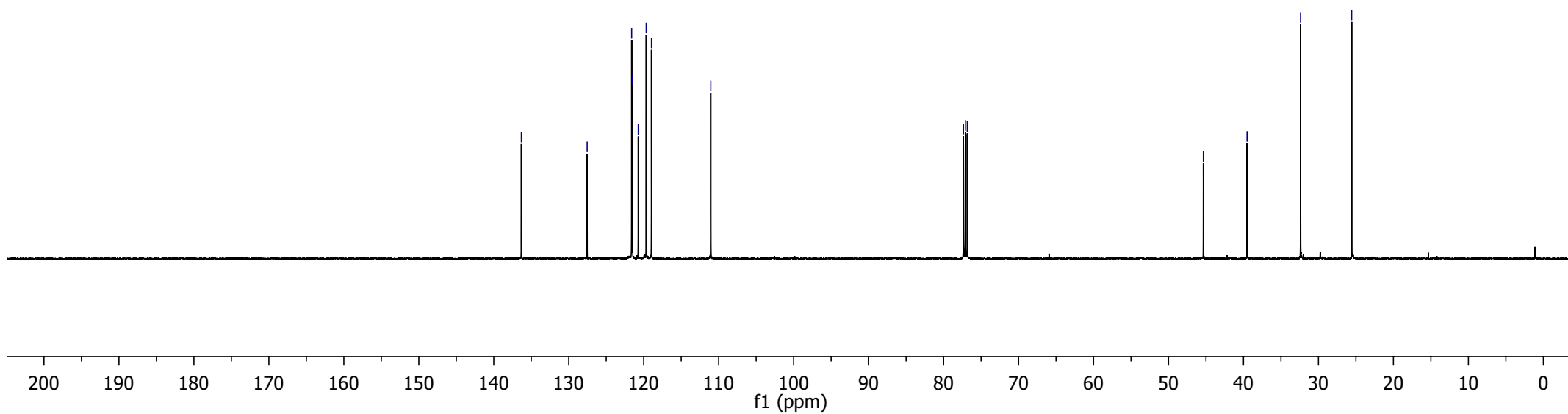
— 77.35
— 77.10
— 76.84

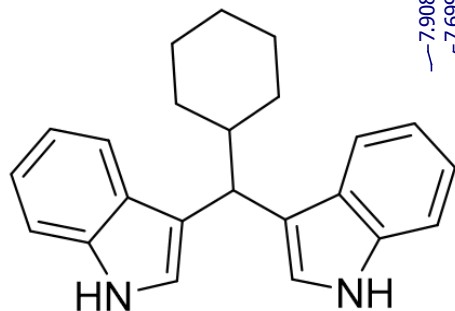
— 45.35

— 39.52

— 32.38

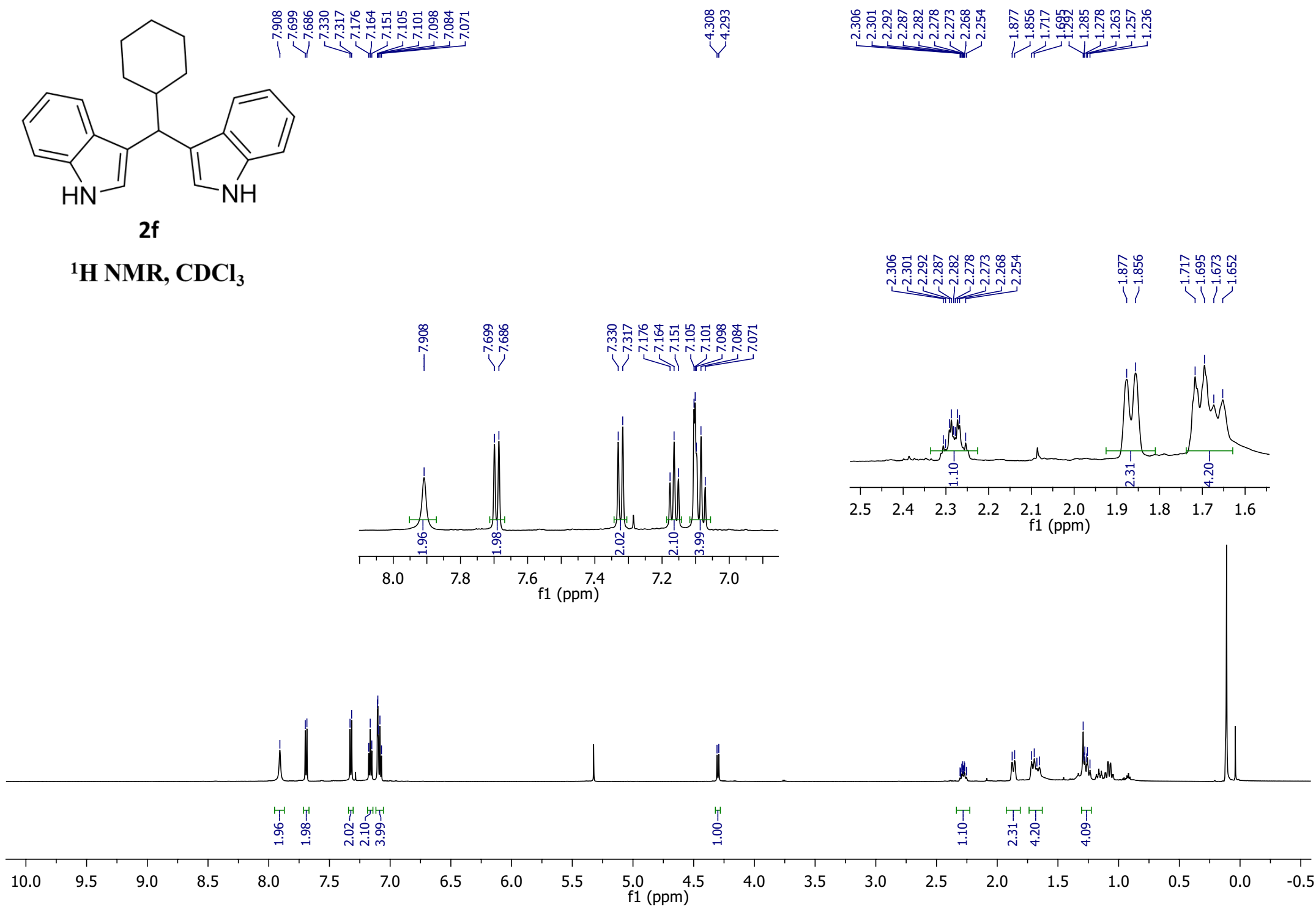
— 25.57

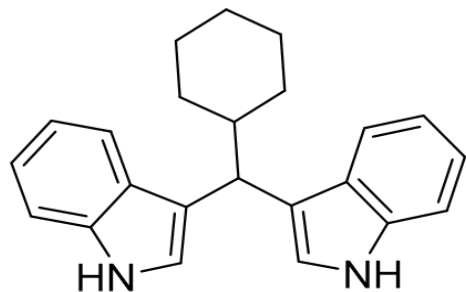




2f

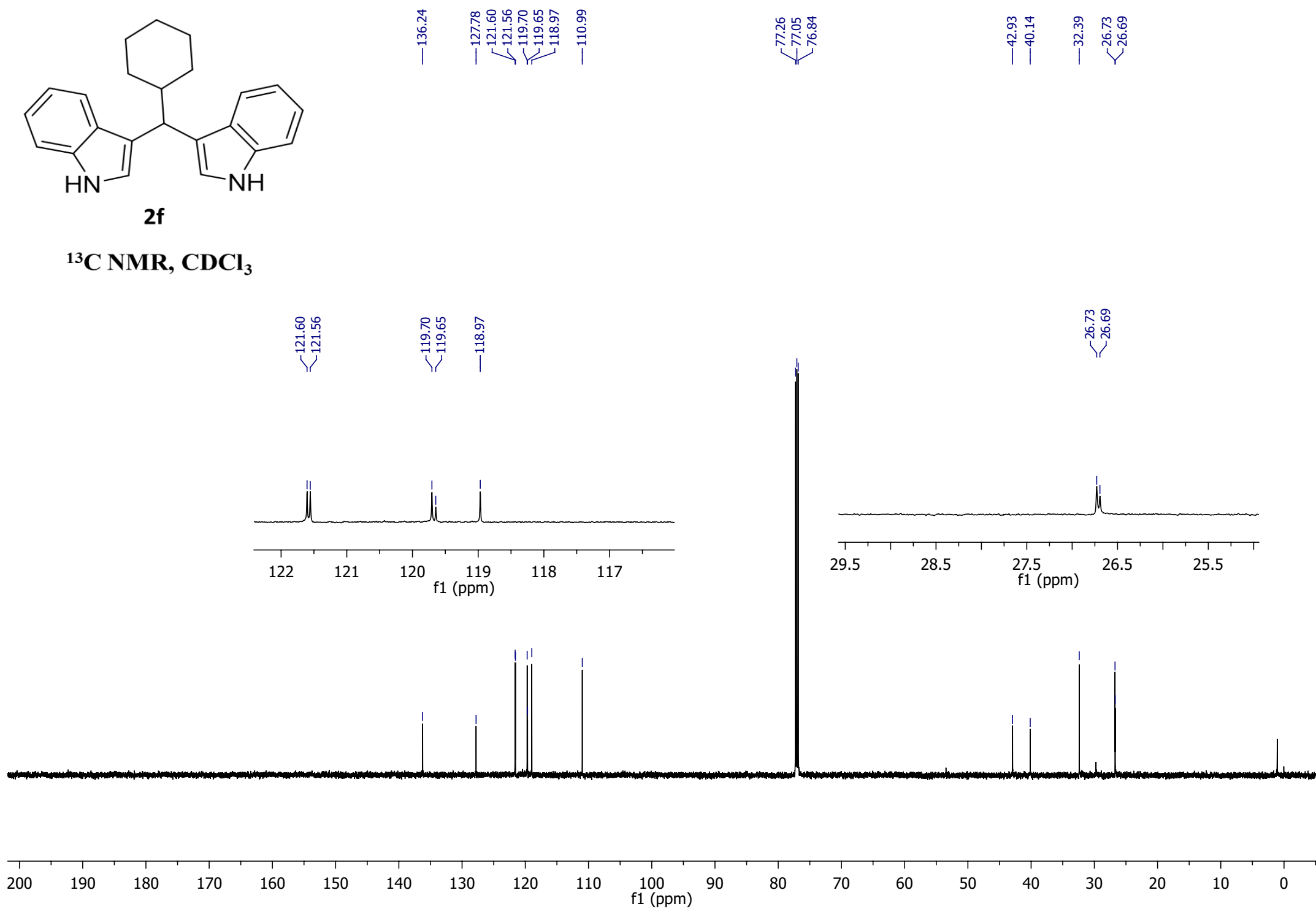
¹H NMR, CDCl₃





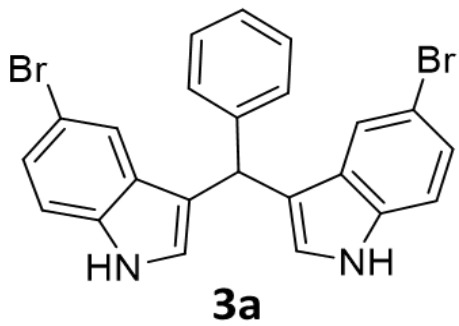
2f

^{13}C NMR, CDCl_3

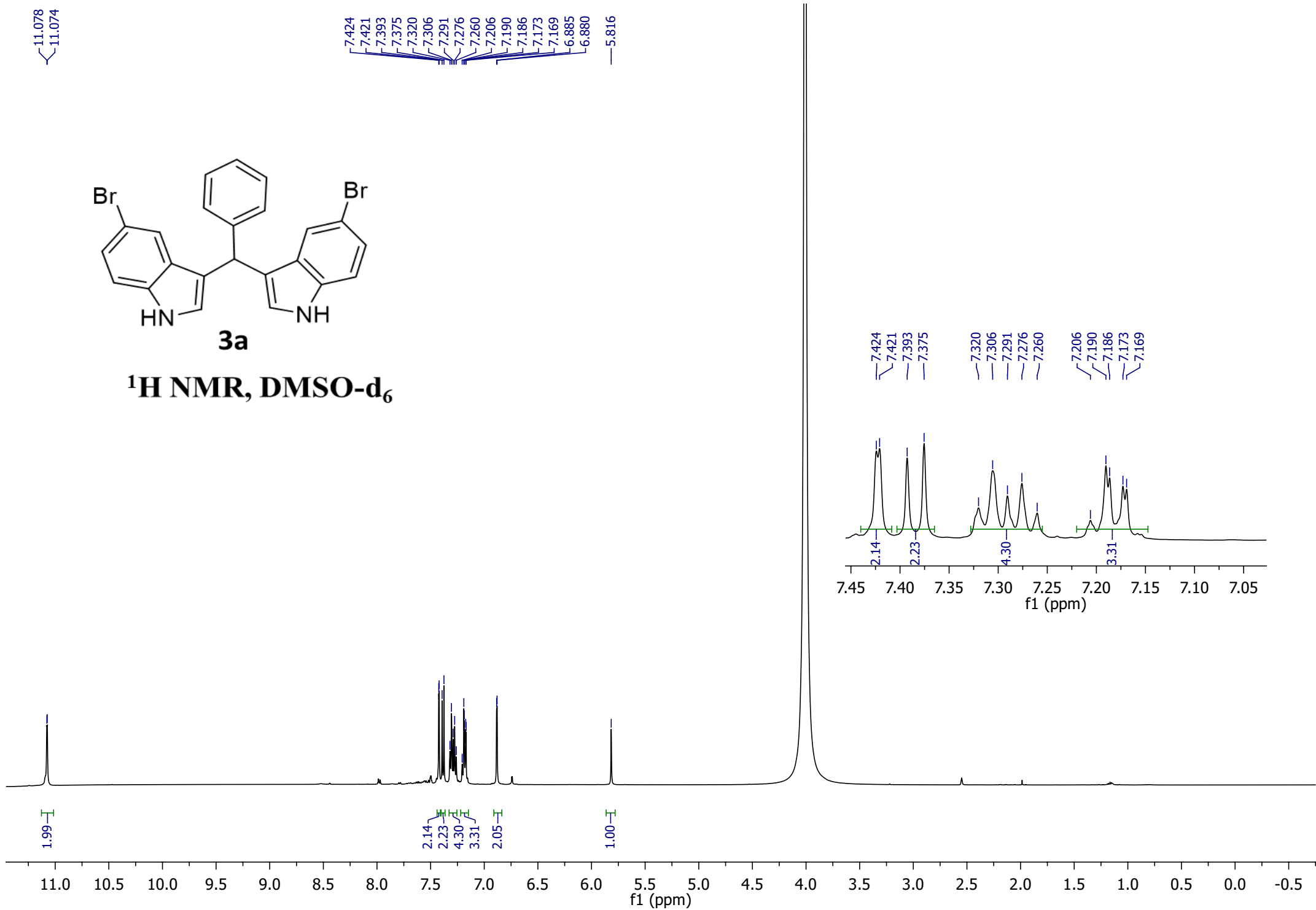


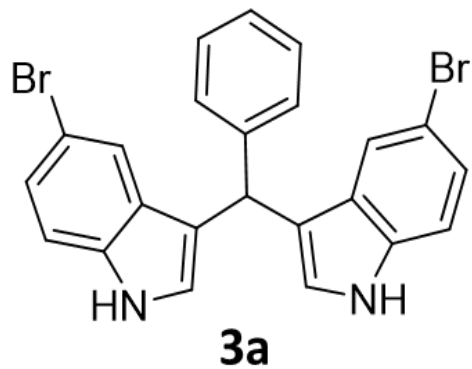
11.078
11.074

7.424
7.421
7.393
7.375
7.320
7.306
7.291
7.276
7.260
7.206
7.190
7.186
7.173
7.169
6.885
6.880
—5.816



¹H NMR, DMSO-d₆

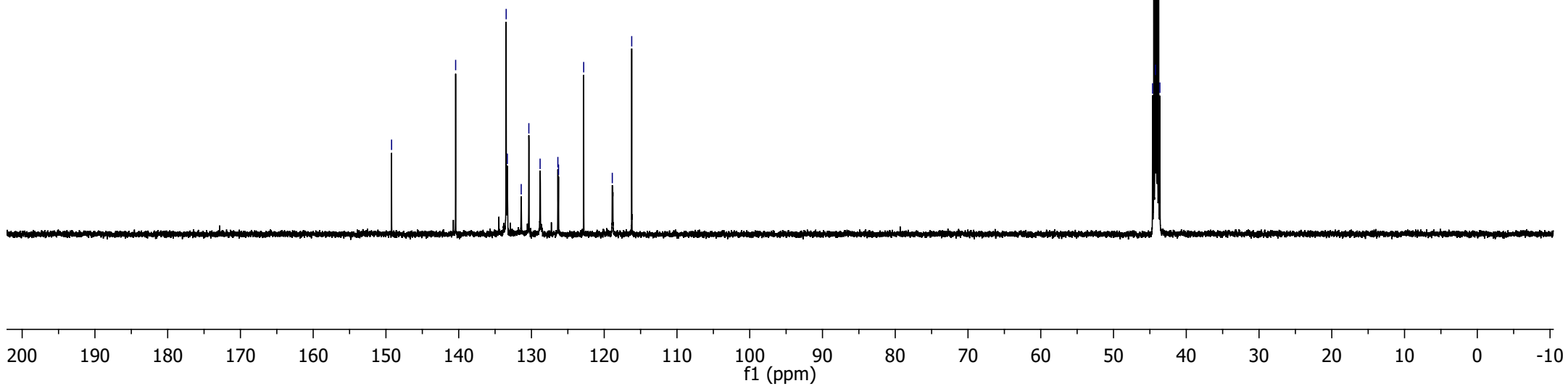
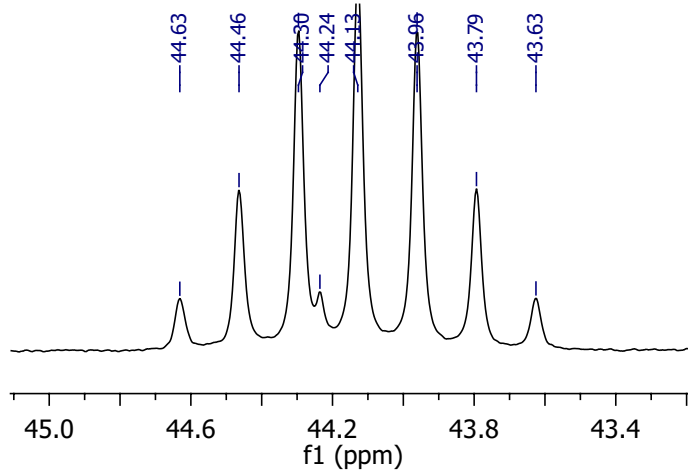


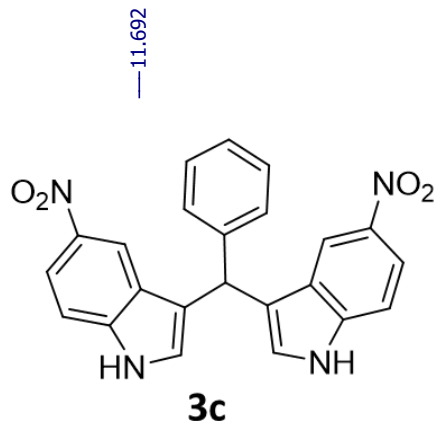


^{13}C NMR, DMSO- d_6

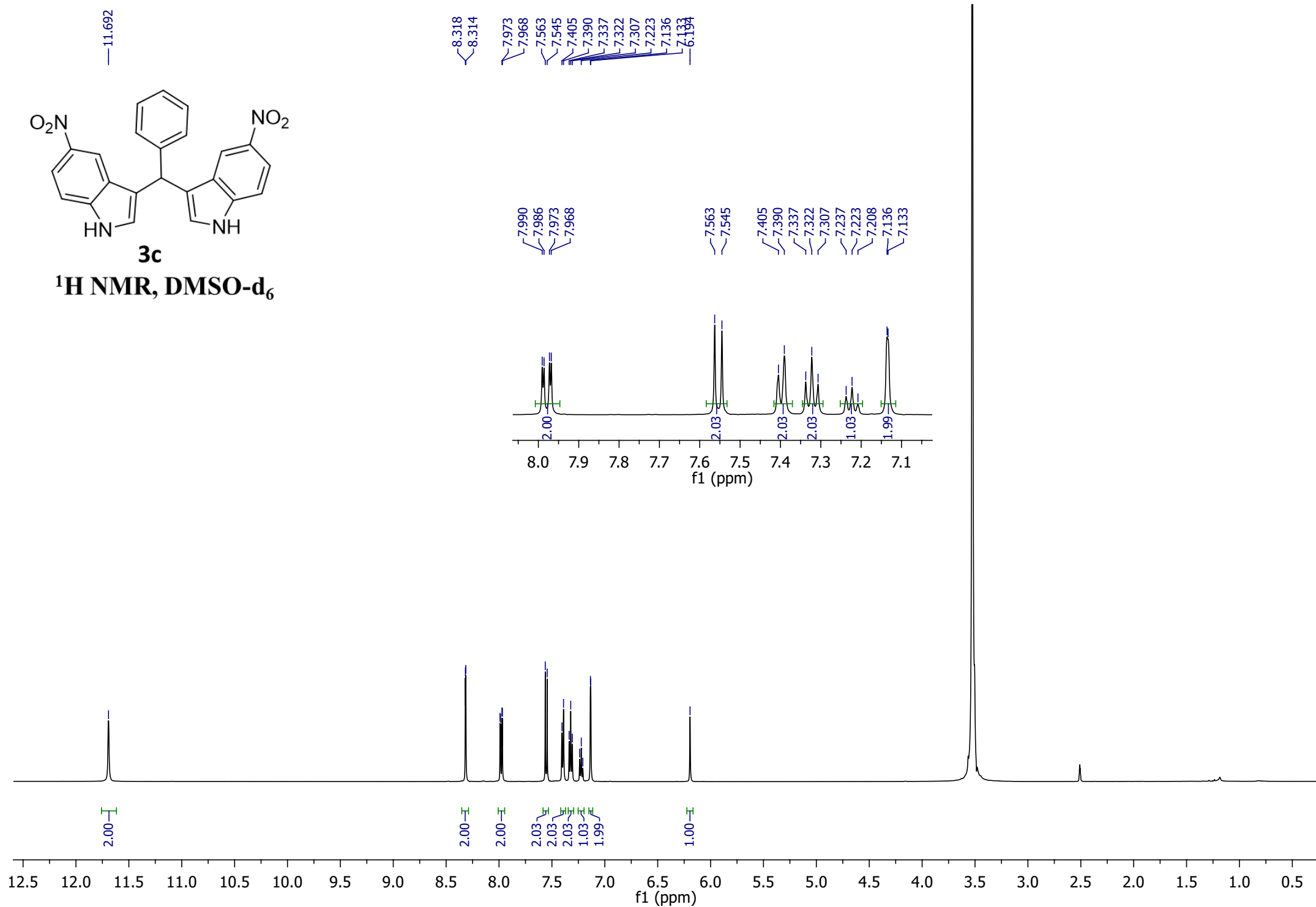
— 149.23
— 140.42
— 133.48
— 133.32
— 131.41
— 130.36
— 128.81
— 126.37
— 126.28
— 122.82
— 118.89
— 116.22

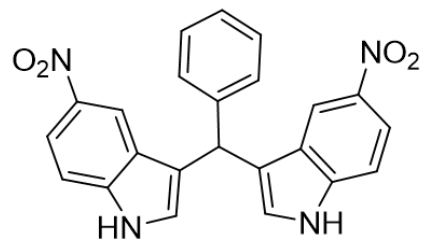
44.63
44.46
44.30
44.24
44.13
43.96
43.79
43.63





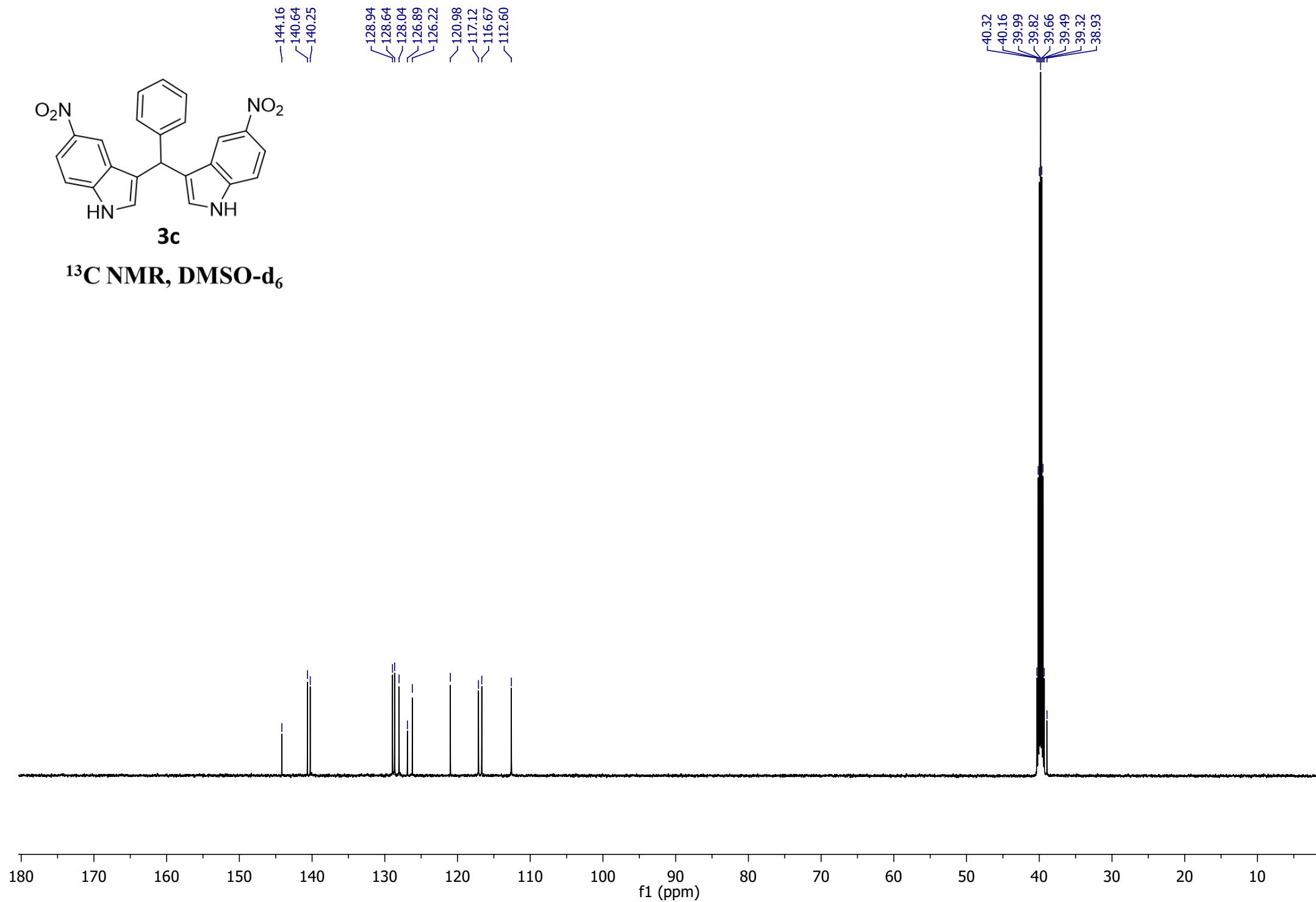
¹H NMR, DMSO-d₆

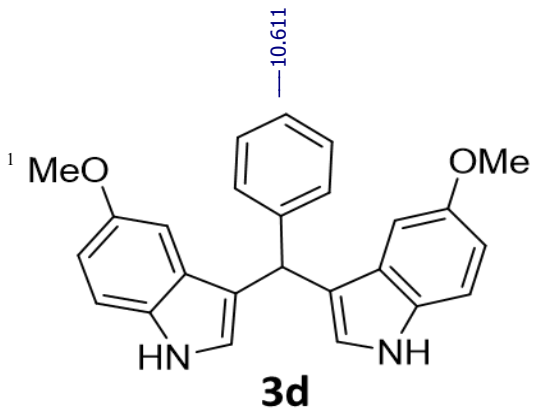




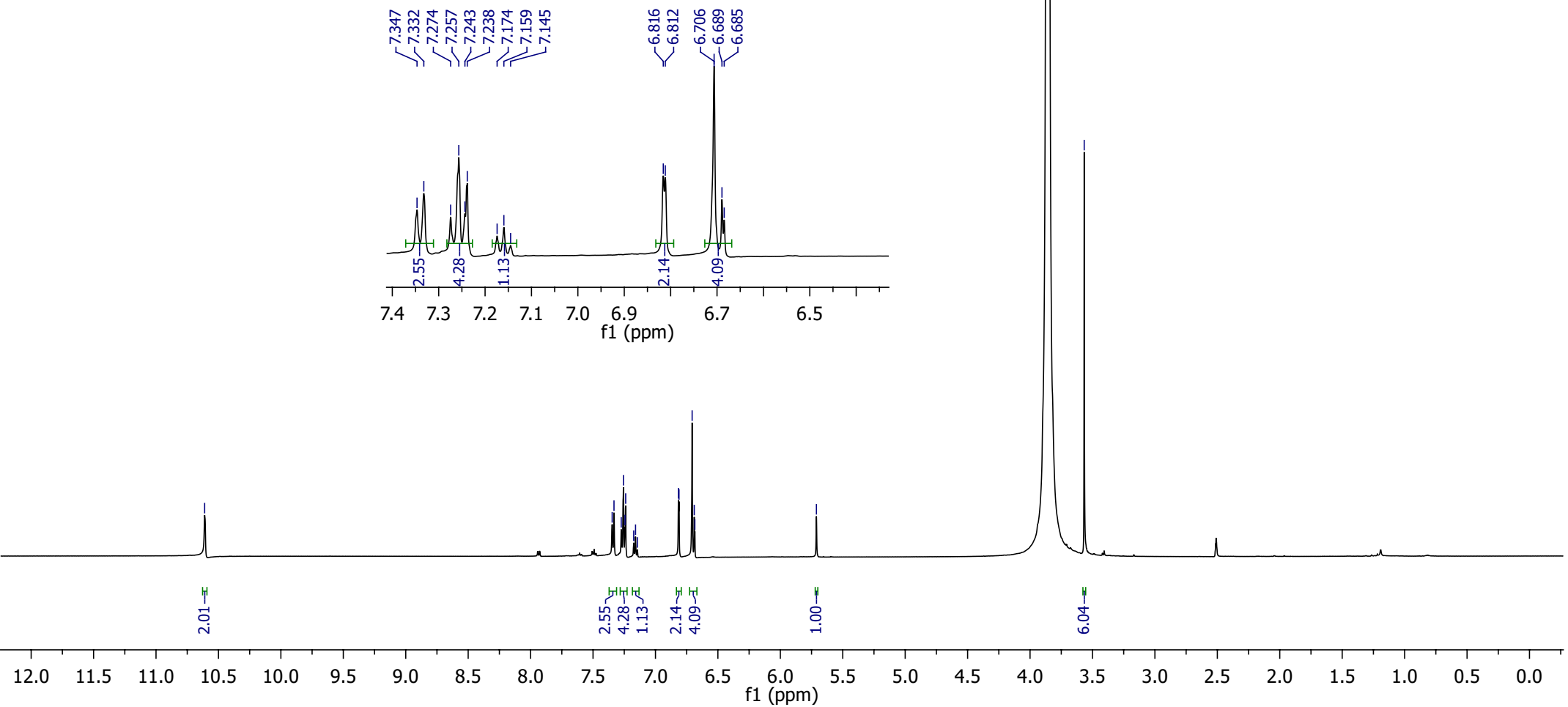
3c

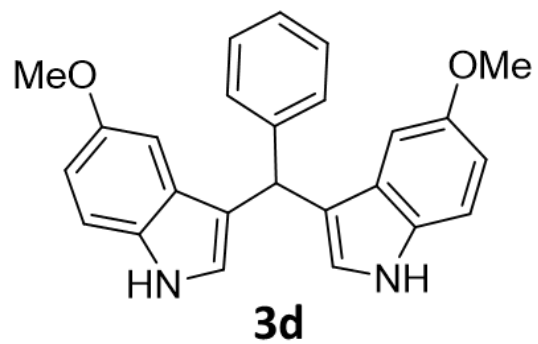
^{13}C NMR, DMSO- d_6





¹H NMR, DMSO-d₆





^{13}C NMR, DMSO- d_6

—153.06
—145.30
—132.18
—128.69
—128.51
—127.39
—126.30
—124.68
—118.14
—112.56
—110.98
—101.92
—55.70
—40.07
—39.93
—39.76
—39.60
—39.42
—39.26
—39.09
—38.93

