

An efficient hydrogen evolution photocatalyst of Rh@Cr₂O₃ loaded PbMoO₄ twenty-six facets polyhedron

Jing Zhang¹, Chunlei Li^{2*}, Xingzhi Jin² and Yi Zheng^{2*}

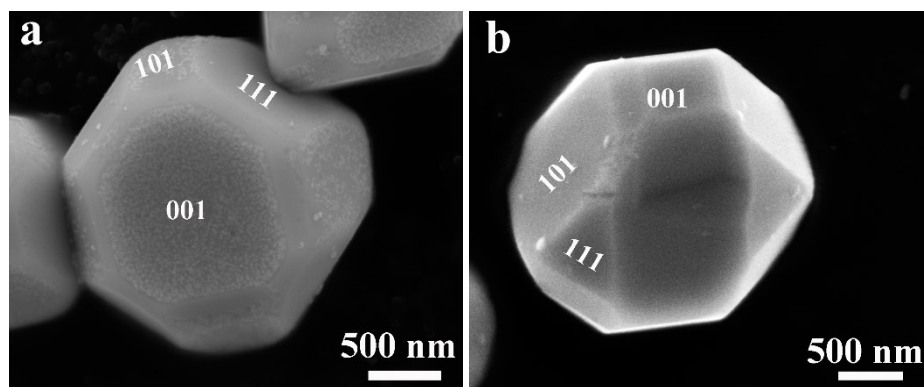


Figure S1 SEM images of (a) PM/Pt, (b) PM/Rh

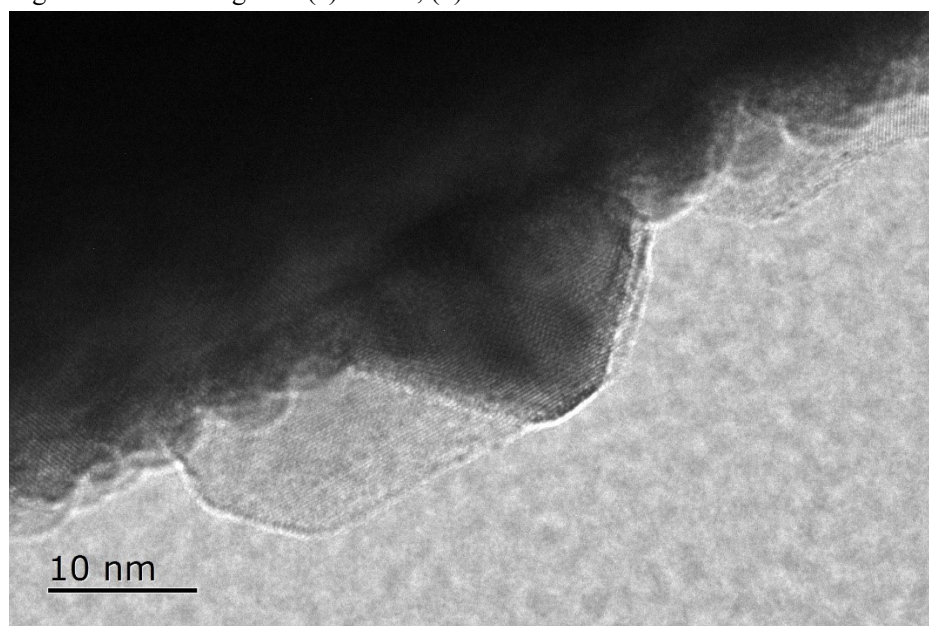


Figure S2 HRTEM of PM/Rh@Cr₂O₃

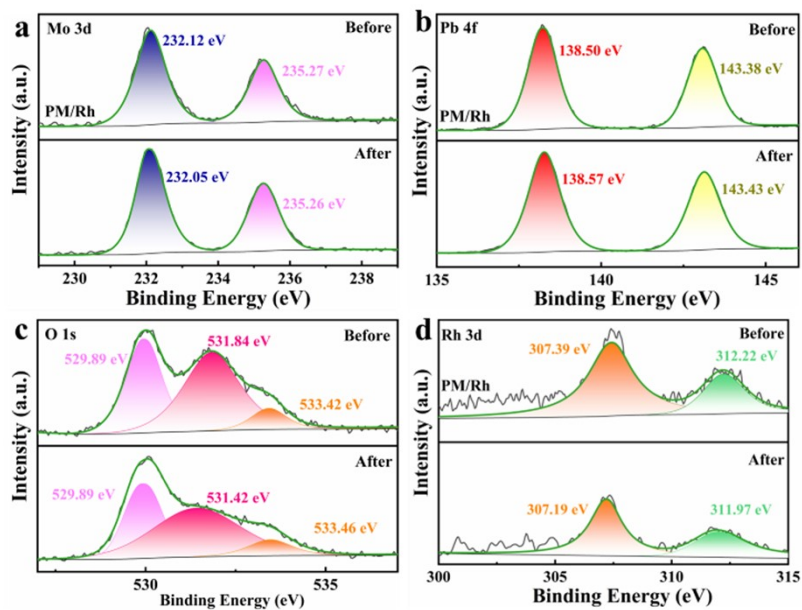


Figure S3 the XPS of PM/Rh before and after HER

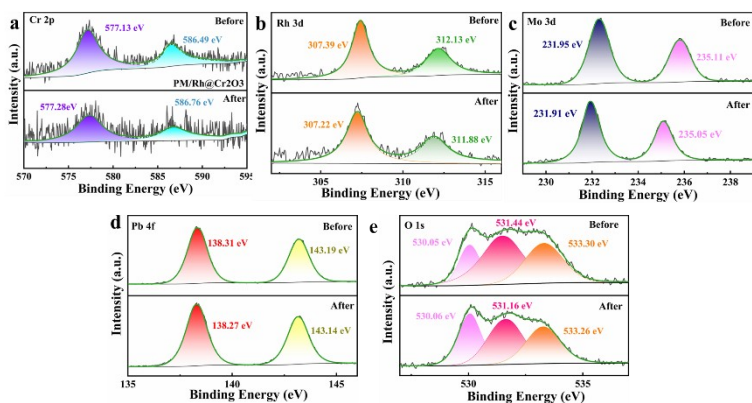


Figure S4 the XPS of PM/Rh@Cr₂O₃ before and after HER