

Supporting information

Isolation of cytotoxic daphnane-type and tigliane-type diterpenoids from *Daphne genkwa* using MetGem software

Si-Hui Mi^{a, 1}, Zhi-Kang Duan^{a, 1}, Yu-Jue Wang^a, Shu-Hui Dong^a, Peng Zhao^a, Guo-Dong Yao^a, Qing-Bo Liu^a, Bin Lin^b, Shao-Jiang Song^a, Xiao-Xiao Huang^{a, *}

^aKey Laboratory of Computational Chemistry-Based Natural Antitumor Drug Research & Development, Liaoning Province; Engineering Research Center of Natural Medicine Active Molecule Research & Development, Liaoning Province; Key Laboratory of Natural Bioactive Compounds Discovery & Modification, Shenyang; School of Traditional Chinese Materia Medica, Shenyang Pharmaceutical University, Shenyang, Liaoning, 110016, China

^bSchool of Pharmaceutical Engineering, Shenyang Pharmaceutical University, Shenyang, Liaoning, 110016, China

¹ These authors contributed equally to this work.

*Corresponding authors.

xiaoxiao270@163.com (X. X. Huang)

List of supplementary content

General experimental procedures

Extraction and isolation

MZmine 2 data preprocessing parameters for global network

Molecular network analysis

Figure S1. UV spectrum of compound **1**

Figure S2 IR spectrum of compound **1**

Figure S3. HRESIMS spectrum of compound **1**

Figure S4. ^1H NMR spectrum (600 MHz, CDCl_3) of compound **1**

Figure S5. ^{13}C NMR spectrum (150 MHz, CDCl_3) of compound **1**

Figure S6. HSQC spectrum (600 MHz, CDCl_3) of compound **1**

Figure S7. HMBC spectrum (600 MHz, CDCl_3) of compound **1**

Figure S8. ^1H - ^1H COSY spectrum (600 MHz, CDCl_3) of compound **1**

Figure S9. NOESY spectrum (600 MHz, CDCl_3) of compound **1**

Figure S10. UV spectrum of compound **3**

Figure S11 IR spectrum of compound **3**

Figure S12. HRESIMS spectrum of compound **3**

Figure S13. ^1H NMR spectrum (600 MHz, CDCl_3) of compound **3**

Figure S14. ^{13}C NMR spectrum (150 MHz, CDCl_3) of compound **3**

Figure S15. HSQC spectrum (600 MHz, CDCl_3) of compound **3**

Figure S16. HMBC spectrum (600 MHz, CDCl_3) of compound **3**

Figure S17. ^1H - ^1H COSY spectrum (600 MHz, CDCl_3) of compound **3**

Figure S18. NOESY spectrum (600 MHz, CDCl_3) of compound **3**

Figure S19. UV spectrum of compound **4**

Figure S20 IR spectrum of compound **4**

Figure S21. HRESIMS spectrum of compound **4**

Figure S22. ^1H NMR spectrum (600 MHz, CDCl_3) of compound **4**

Figure S23. ^{13}C NMR spectrum (150 MHz, CDCl_3) of compound **4**

Figure S24. HSQC spectrum (600 MHz, CDCl_3) of compound **4**

Figure S25. HMBC spectrum (600 MHz, CDCl₃) of compound **4**

Figure S26. ¹H-¹H COSY spectrum (600 MHz, CDCl₃) of compound **4**

Figure S27. NOESY spectrum (600 MHz, CDCl₃) of compound **4**

Figure S28. UV spectrum of compound **6**

Figure S29 IR spectrum of compound **1**

Figure S30. HRESIMS spectrum of compound **6**

Figure S31. ¹H NMR spectrum (600 MHz, CDCl₃) of compound **6**

Figure S32. ¹³C NMR spectrum (150 MHz, CDCl₃) of compound **6**

Figure S33. HSQC spectrum (600 MHz, CDCl₃) of compound **6**

Figure S34. HMBC spectrum (600 MHz, CDCl₃) of compound **6**

Figure S35. ¹H-¹H COSY spectrum (600 MHz, CDCl₃) of compound **6**

Figure S36. NOESY spectrum (600 MHz, CDCl₃) of compound **6**

TableS1 The analysis result of MetGem software

General experimental procedures

Optical rotation was tested on a JASCO DIP-370 digital polarimeter (JASCO, Tokyo, Japan). ECD spectra were measured by a MOS-450 spectrometer (Bio-Logic Science, France). UV spectra were recorded in MeOH using a Shimadzu UV-2600i spectrophotometer (Shimadzu, Tokyo, Japan). The 1D and 2D NMR spectra were recorded on a Bruker AVIII-600 spectrometer (600 and 150 MHz) in CDCl₃ with TMS as an internal standard. HRESIMS data were tested in the positive-ion mode on a Bruker Micro Q-TOF. Chromatographic silica gel (200–300 mesh, Qingdao Marine Chemical Factory, Qingdao, China), Thin-Layer Chromatography (TLC) was carried out on silica gel GF254 (Qingdao Marine Chemical, Inc.), and the vanillin-H₂SO₄ as the developer reagent. Semi-preparative HPLC was performed on a Shimadzu LC-20A with an SPD-20A UV/VIS'S detector and using the column of YMC Pack ODS-A (250 × 10 mm, 5 μm, YMC Company, Kyoto, Japan). Reversed-phase C18 (RP-C₁₈) silica gel (50 μm, Japan) was employed for column chromatography. Reagents and solvents were obtained from commercial supplies. The MTT assays were measured on a Varioskan Flash Multimode Reader (Thermo Scientific Co. Ltd, Massachusetts, USA).

Extraction and isolation

The dried flower buds of *D. genkwa* (60.0 kg) were extracted with 70% EtOH three times. After removal of the solvent under vacuum, the residue was suspended in H₂O and successively extracted with CH₂Cl₂. Subsequently, the CH₂Cl₂ extract was subjected to column chromatography (200–300 mesh) under reduced pressure and subsequent TLC analysis. Then, the CH₂Cl₂ extract was successfully divided into six fractions (Fr. A–Fr. E) by cross-merging. Fr. C (230.0 g) was further subjected to HP-20 and ODS using a mixture of EtOH–H₂O (from 30:70 to 100:0, v/v) to afford four fractions (Fr. C1–C4). Fr. C3 (25.1 g) was separated on a silica gel column eluted with PE-EA and a semi-preparative HPLC to get compound **5** (30.1 mg). Fr. C2 (22.3 g) was purified by a silica gel column and RP-HPLC to obtain compound **2** (4.0 mg) and **3** (10.0 mg). Fr. D (400.0 g) was also further subjected on HP-20 and ODS using a mixture of EtOH–H₂O (from 30:70 to 100:0, v/v) to afford four fractions (Fr. D1–D3).

Through a silica gel column and RP-HPLC, compound **1** (7.5 mg) was obtained from Fr. D1 (15.3 g), compounds **7** (200.3 mg) and **8** (9.2 mg) from Fr. D2, and compounds **4** (10.5 mg) and **6** (9.3 mg) from Fr. D3.

MZmine 2 data preprocessing parameters for global network

Raw files were converted into mzXML (mass spectrometry data format) files using the GNPS_Vendor_Conversion software. Then, mzXML files were processed using MZmine 2.38 (Olivon, et al. 2017, Brel, et al. 2020). Mass detection was carried out with a centroid mass detector with the noise level set to 1000 for the MS1 level and 100 for the MS2 level set to all. The ADAP (Automated Data Analysis Pipeline) chromatogram builder was achieved using a minimum group size of scans of 4, a minimum group intensity threshold of 3000, a minimum highest intensity of 3000, and an m/z tolerance of 0.002 or 10.0 ppm. The wavelets (ADAP) algorithm was used for the chromatogram deconvolution with the following settings: S/N threshold of 5, an intensity window SN, a minimum feature height of 300, a coefficient area threshold of 20, a peak duration range between 0 and 1, and an RT wavelet range between 0 and 0.02. Chromatograms were deisotoped using the isotopic peaks grouper algorithm with an m/z tolerance of 0.002 (10 ppm), RT tolerance of 0.2 (absolute), maximum charge of 3, and the representative isotope used was the most intense. Peak alignment was performed using the join aligner method: m/z tolerance of 0.003 or 10 ppm, weight for m/z of 1.00, RT tolerance of 2 min, weight for RT of 1.00. The peak list was gap filled with the peak finder method multithreaded with an intensity tolerance of 30.00, m/z tolerance of 0.02 (10 ppm), and 0.20 for RT tolerance.

Molecular network analysis

After preprocessing the HPLC-HRMS/MS data with MZmine 2.38, the output .mgf file was processed with the MetGem software version 1.3.6 to give a network containing nodes distributed in clusters (Olivon, et al. 2018, Olivon, et al. 2017). Networks were generated using the following parameters: m/z tolerance set to 0.01, minimum matched peaks set to 4, topK set to 10, minimal cosine score value of 0.60,

and max. connected component size of 400. Then, the associated CSV file was loaded. For the mapping process, the relative quantification of each ion was represented by pie chart diagrams for which the proportions were based on the respective areas of the corresponding extracted ion chromatograph areas. Then, the analogues of the spectra in the network were searched in the available spectral libraries. The library spectra were filtered in the same manner as the input data. All the matches between the network spectra and library spectra were required to have a score above 0.6 and at least 4 matched peaks. The m/z tolerance for the analogue search was set to 100. T-SNE visualization was generated using the following parameters: at least 1 cosine score above 0.60; number of iterations, 1000; perplexity, 6; learning rate, 200; early exaggeration, 12; using Barnes-hut approximation with an angle of 0.5.

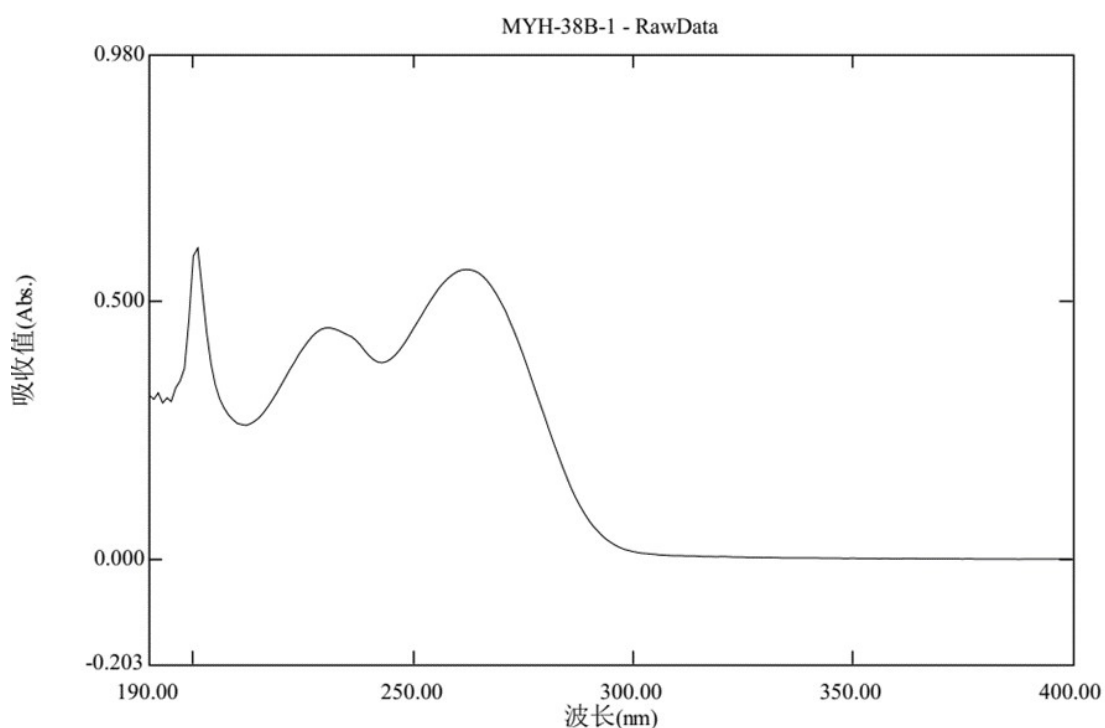


Figure S1. UV spectrum of compound 1

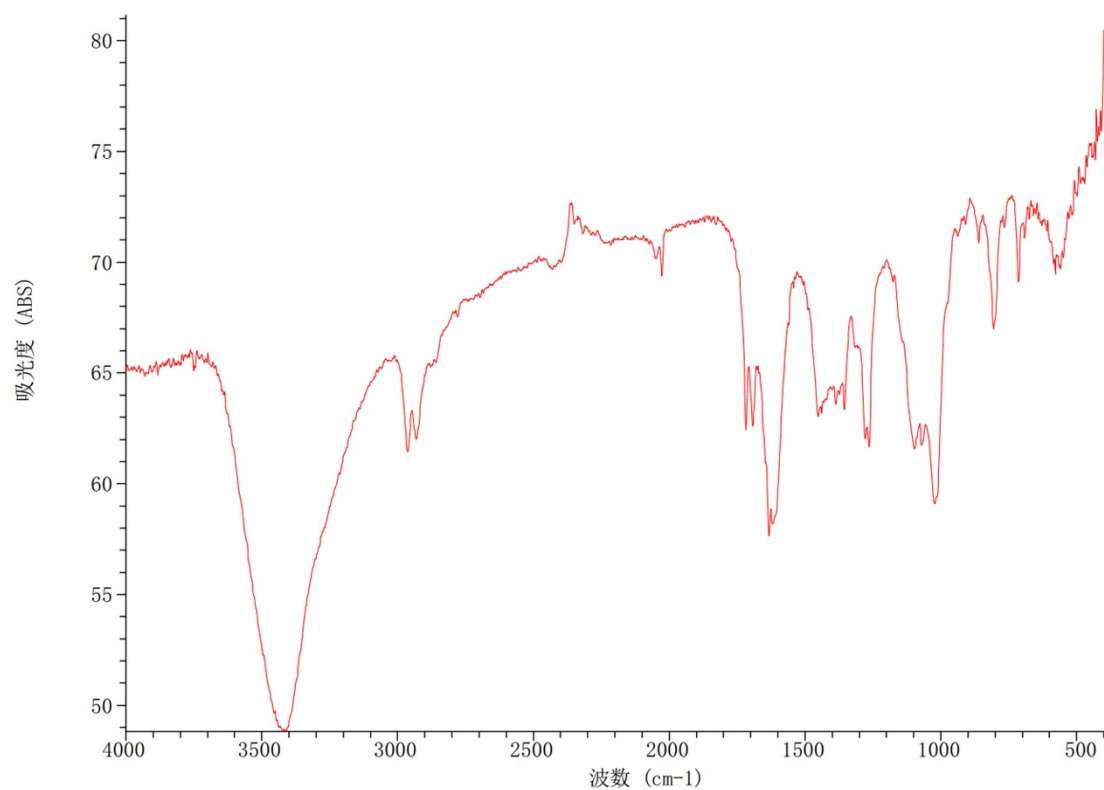
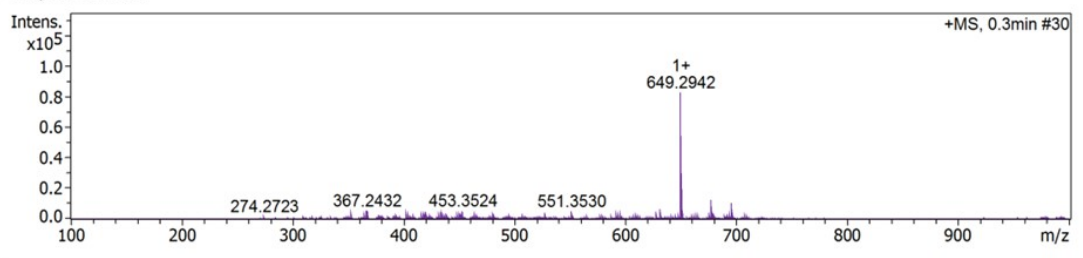


Figure S2 IR spectrum of compound **1**

+MS, 0.3min #30



C35H46O10, M+nNa, 649.2983

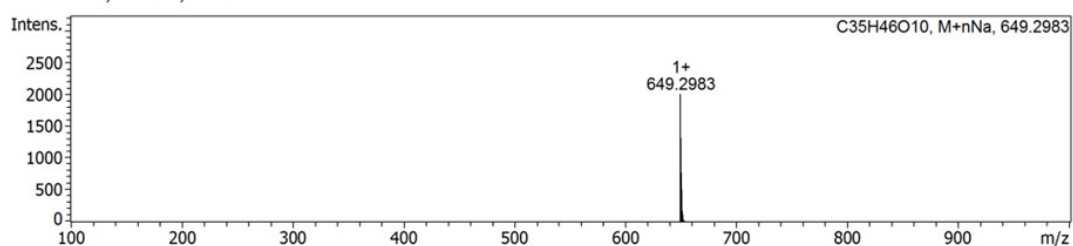


Figure S3. HRESIMS spectrum of compound **1**

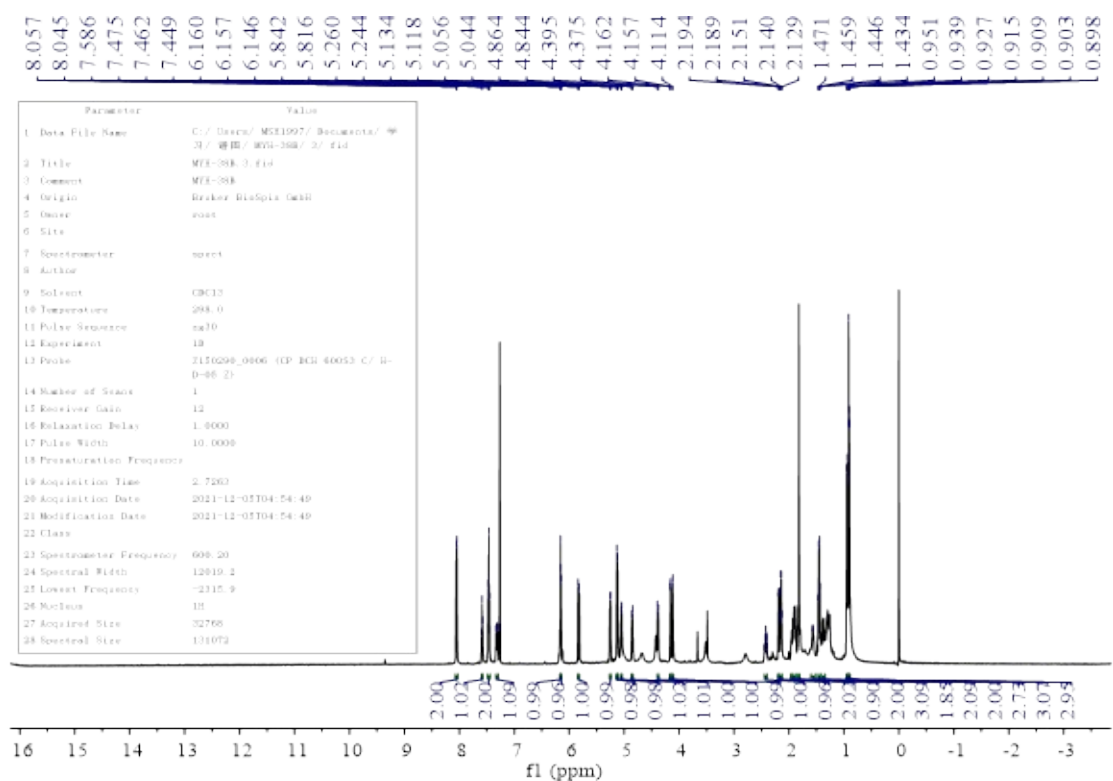


Figure S4. ¹H NMR spectrum (600 MHz, CDCl₃) of compound 1

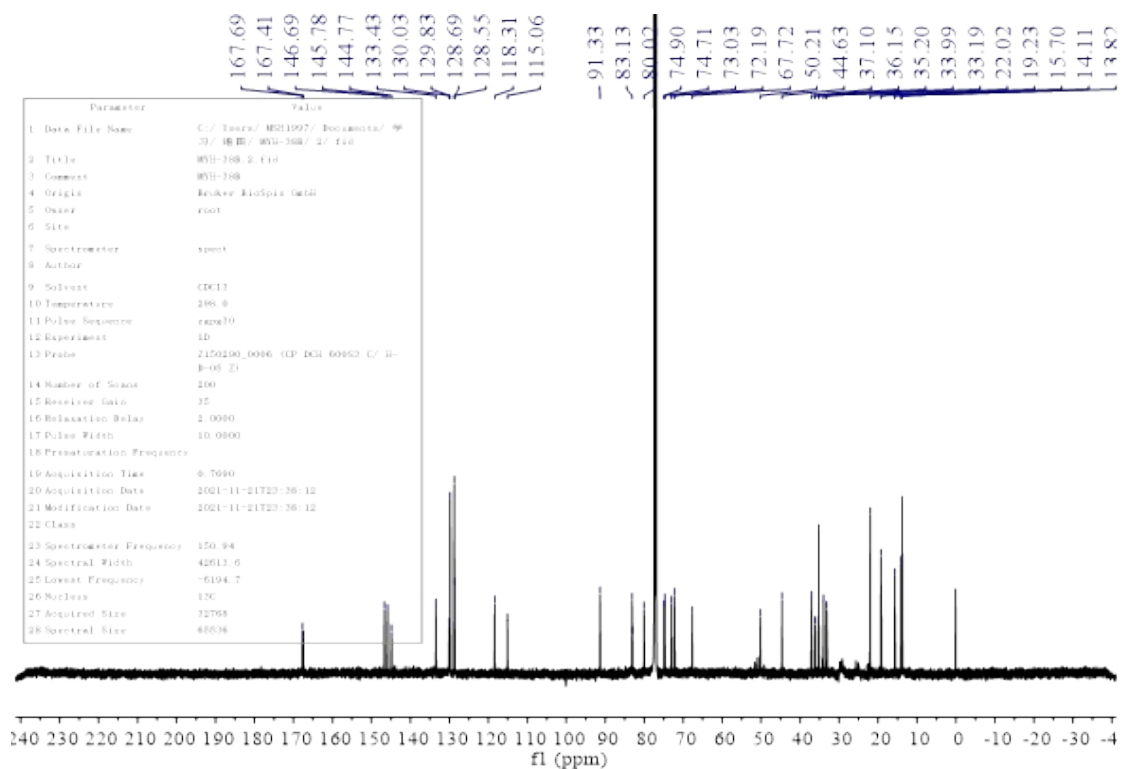


Figure S5. ¹³C NMR spectrum (150 MHz, CDCl₃) of compound 1

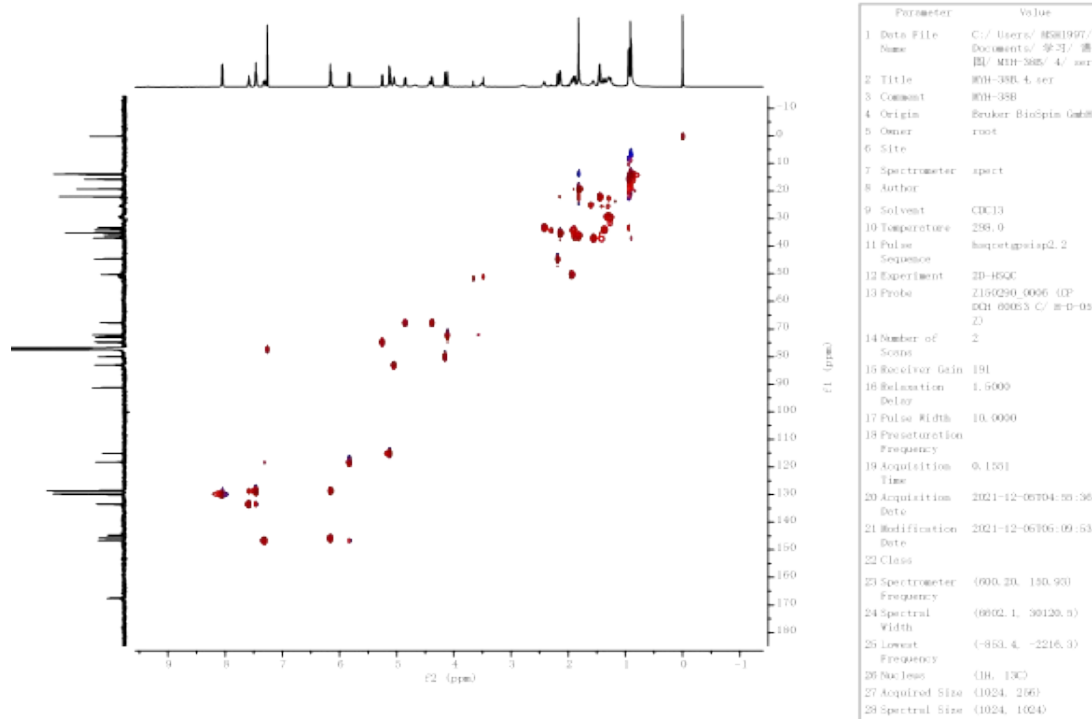


Figure S6. HSQC spectrum (600 MHz, CDCl₃) of compound **1**

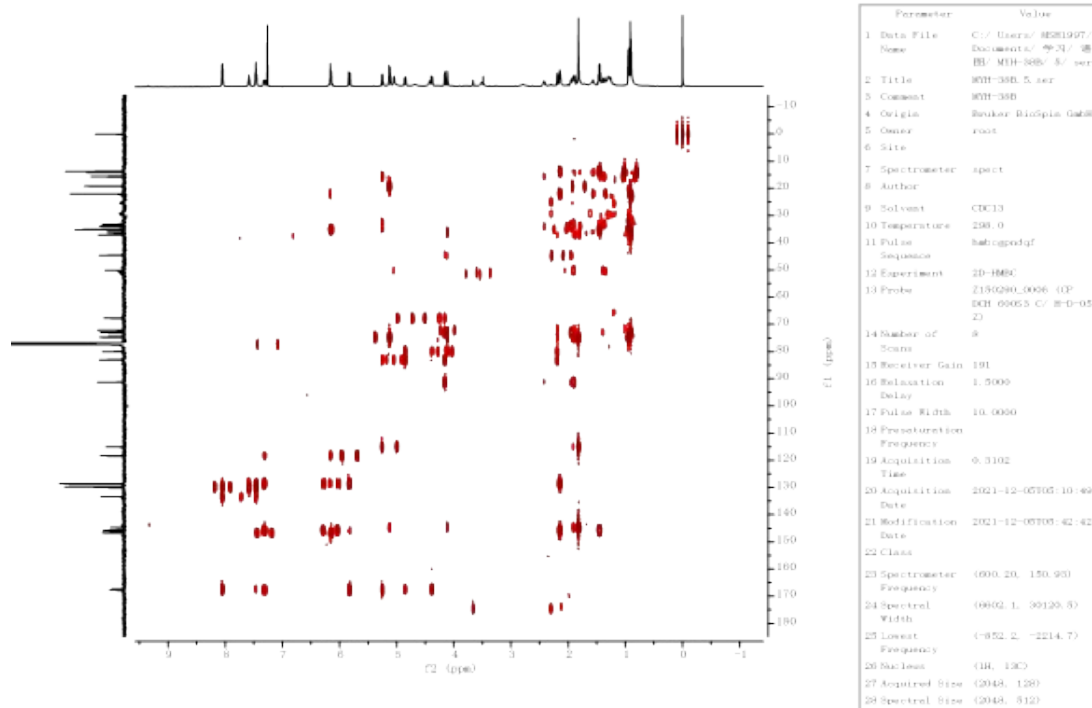


Figure S7. HMBC spectrum (600 MHz, CDCl₃) of compound **1**

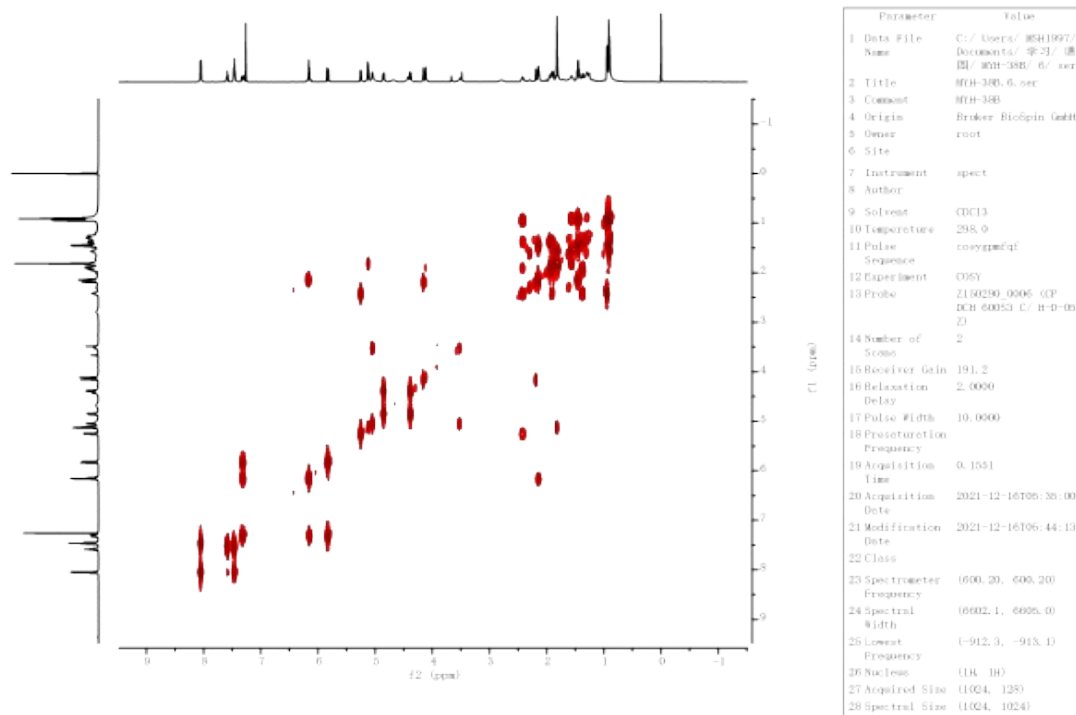


Figure S8. ^1H - ^1H COSY spectrum (600 MHz, CDCl_3) of compound **1**

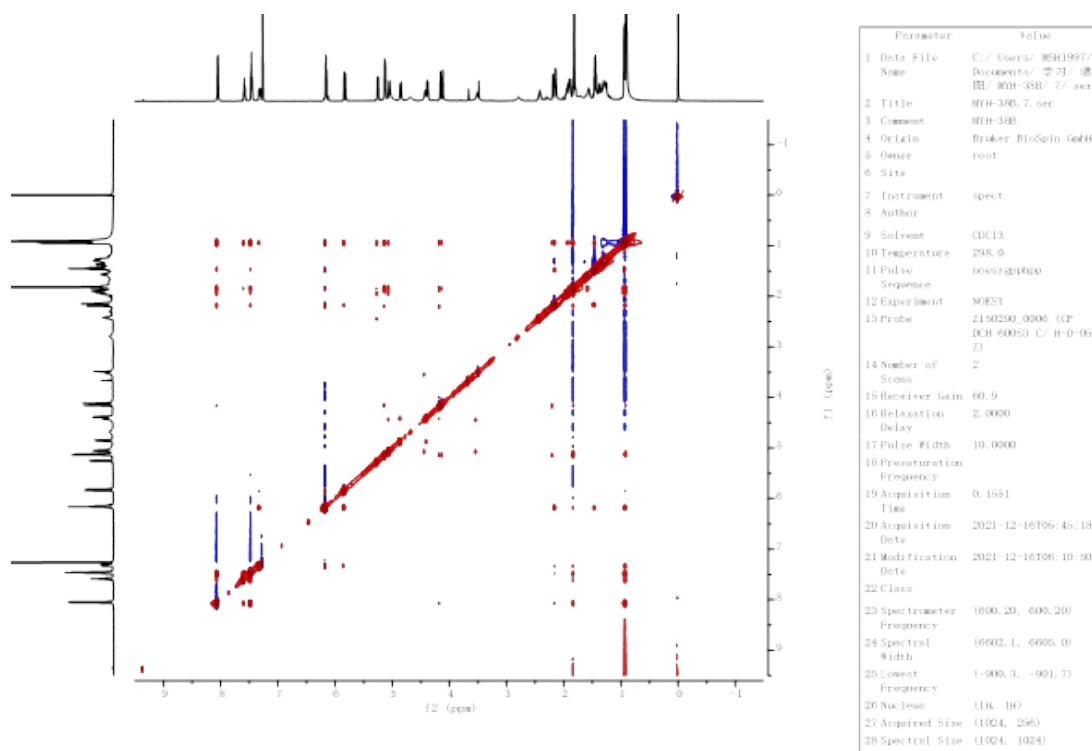


Figure S9. NOESY spectrum (600 MHz, CDCl_3) of compound **1**

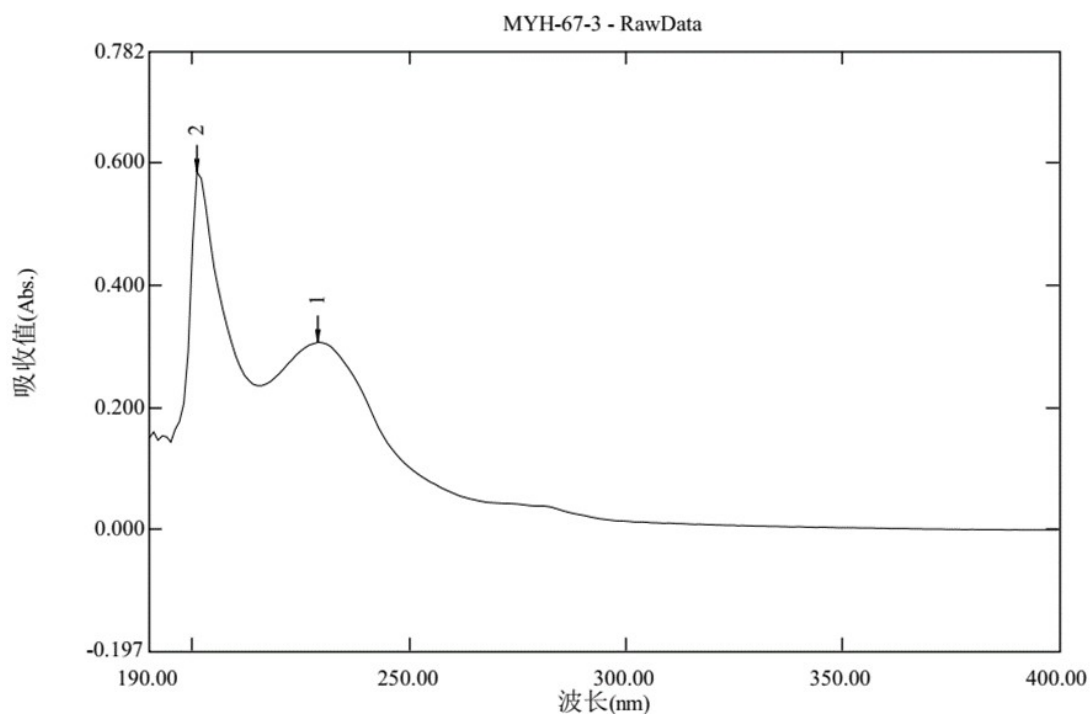


Figure S10. UV spectrum of compound **3**

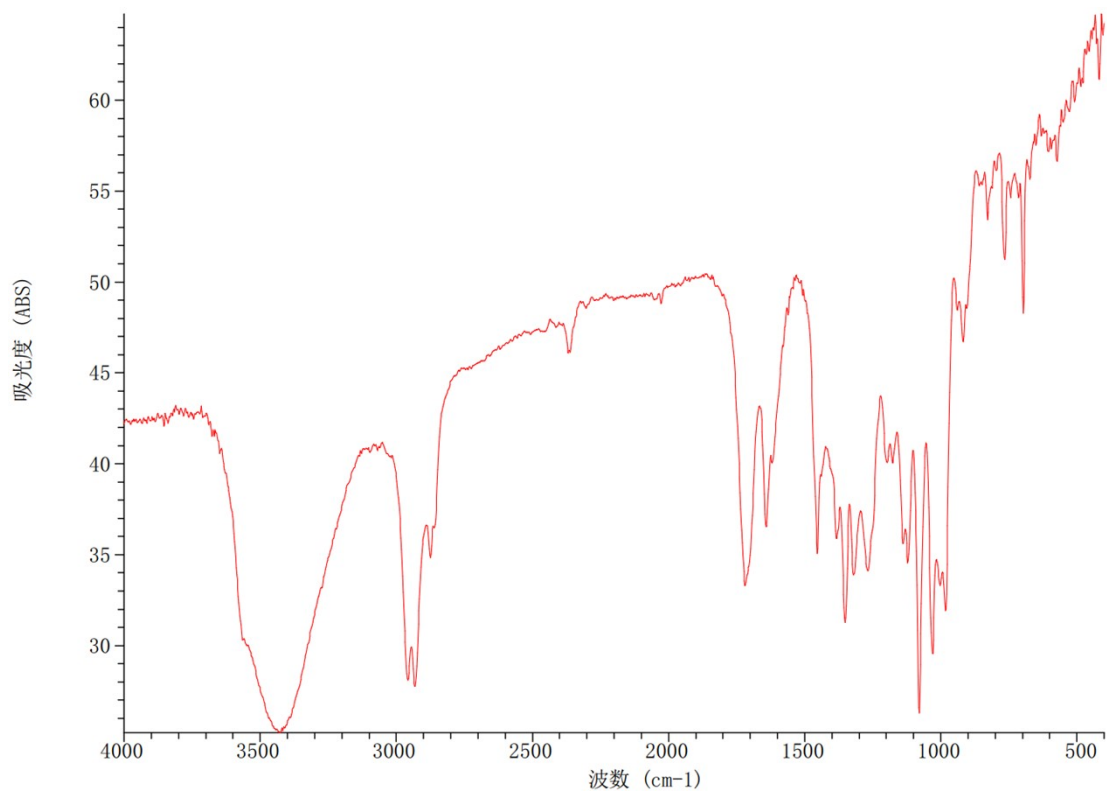
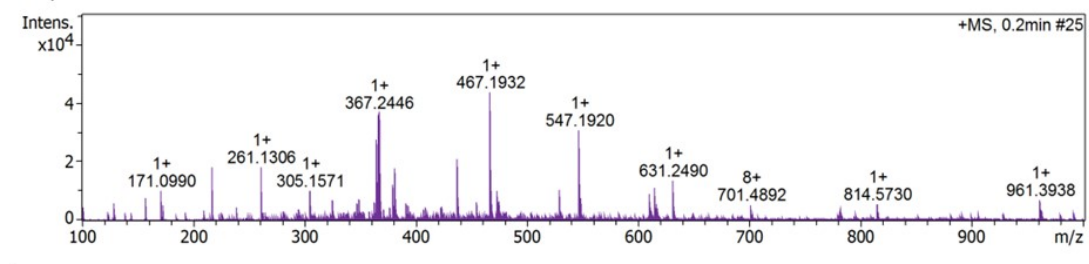


Figure. S11. IR spectrum of compound **3**

+MS, 0.2min #25



C29H32O9, M+nNa, 547.1939

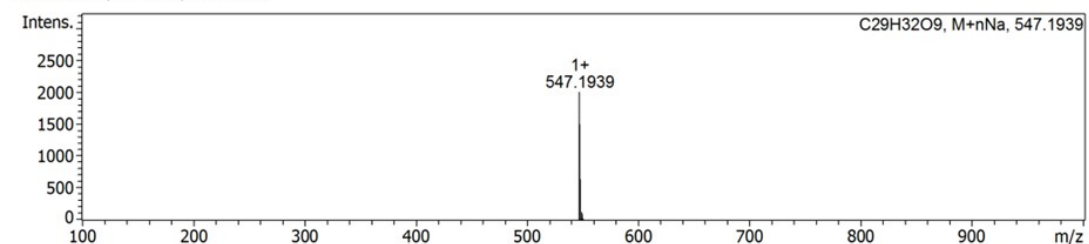


Figure S12. HRESIMS spectrum of compound 3

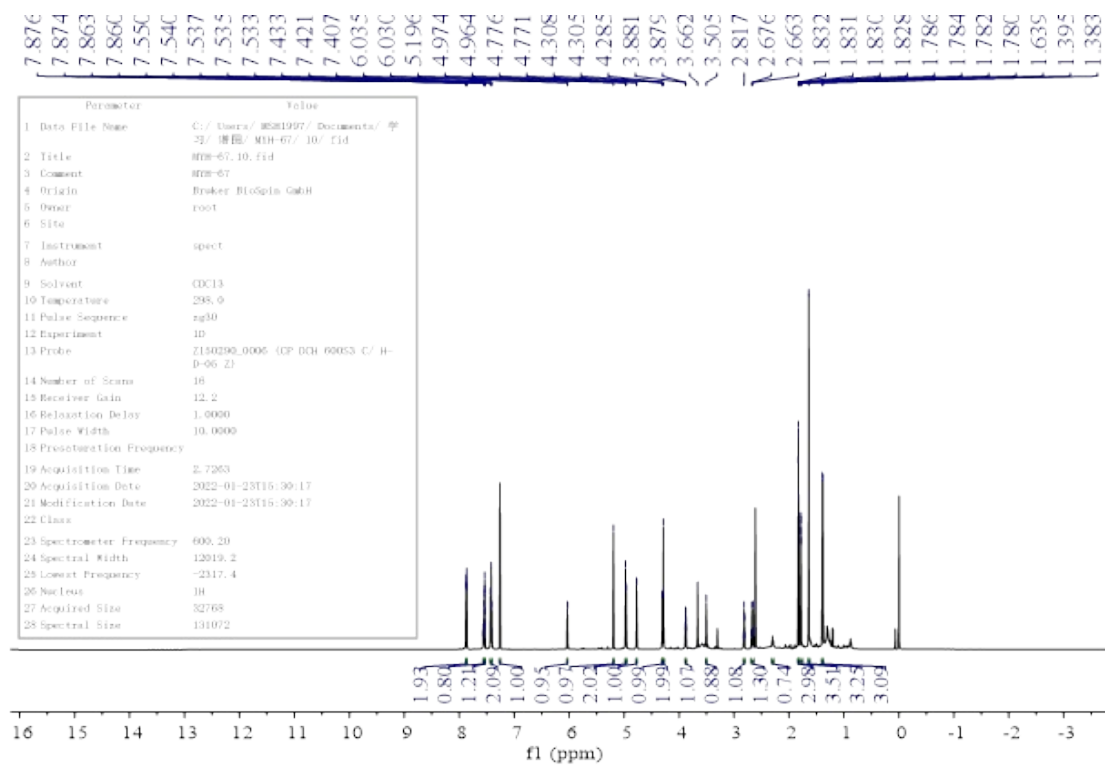


Figure S13. ¹H NMR spectrum (600 MHz, CDCl₃) of compound 3

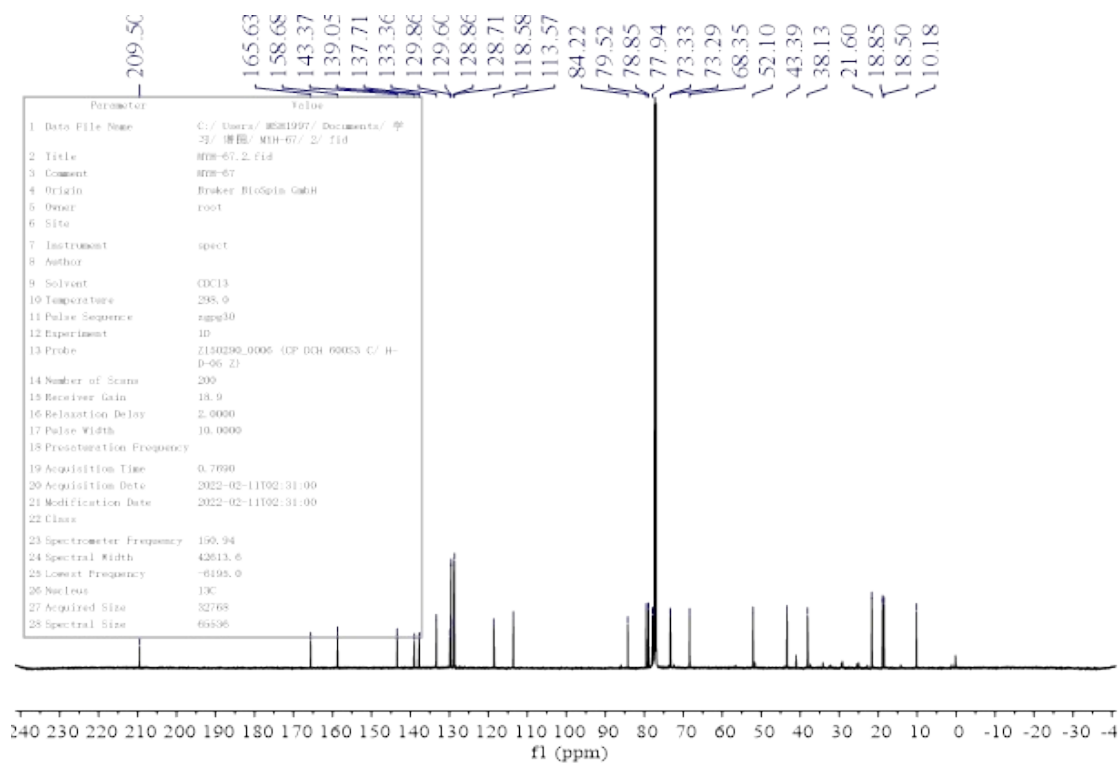


Figure S14. ^{13}C NMR spectrum (150 MHz, CDCl_3) of compound **3**

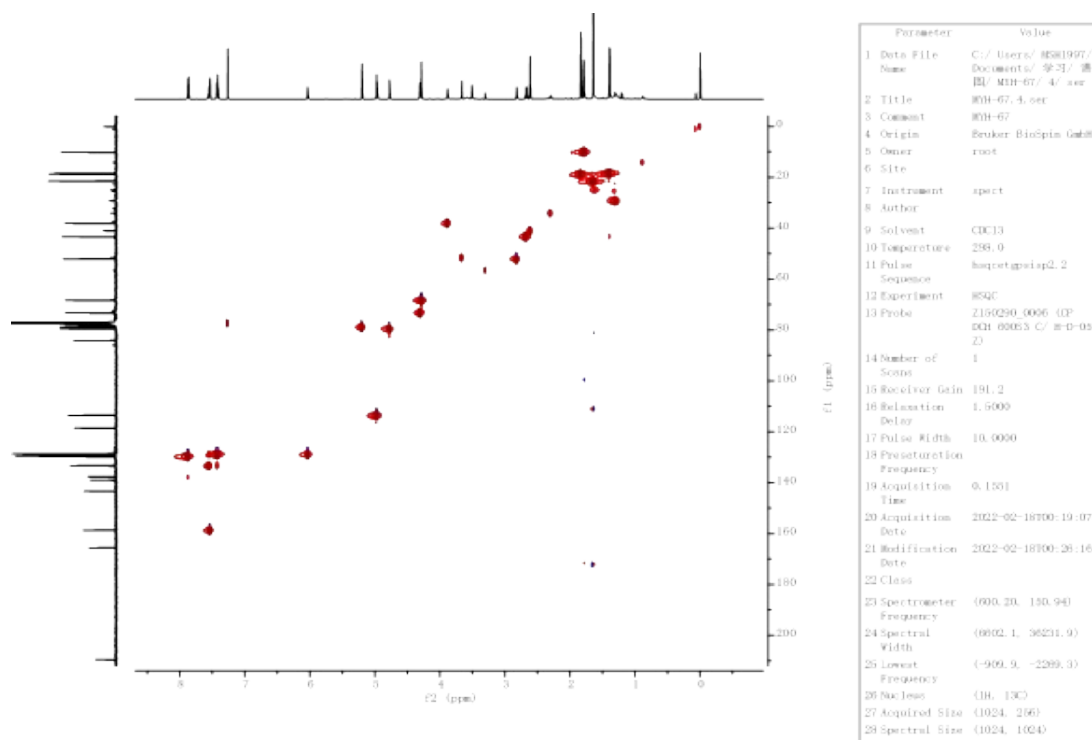


Figure S15. HSQC spectrum (600 MHz, CDCl_3) of compound **3**

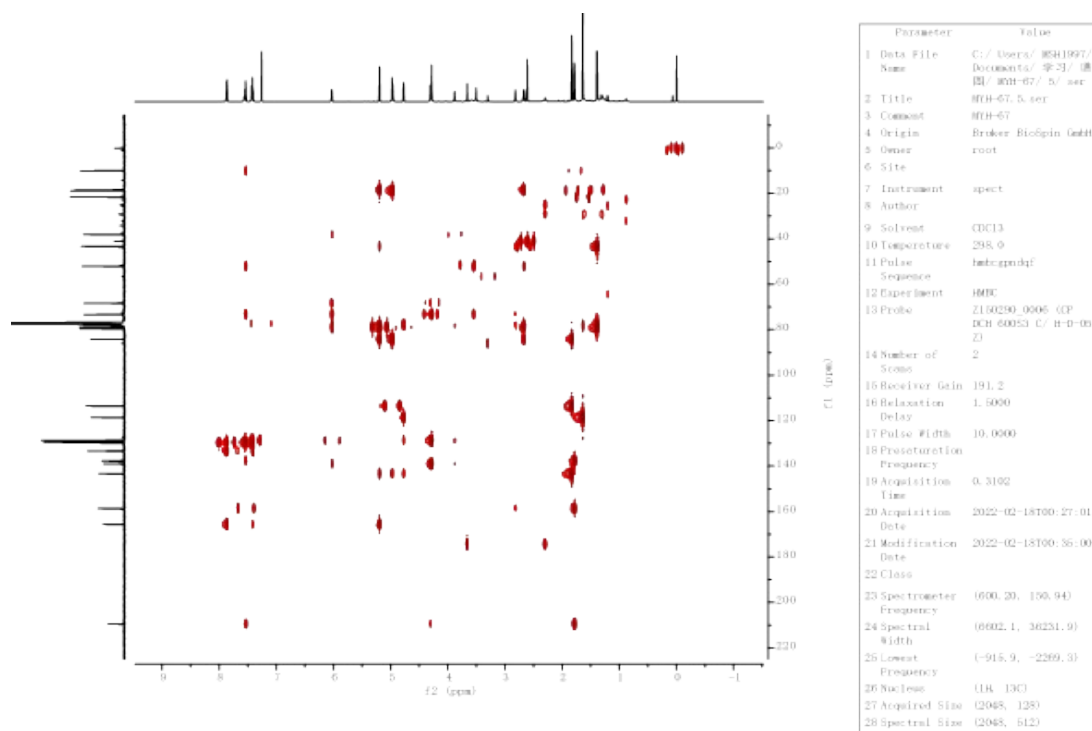


Figure S16. HMBC spectrum (600 MHz, CDCl₃) of compound **3**

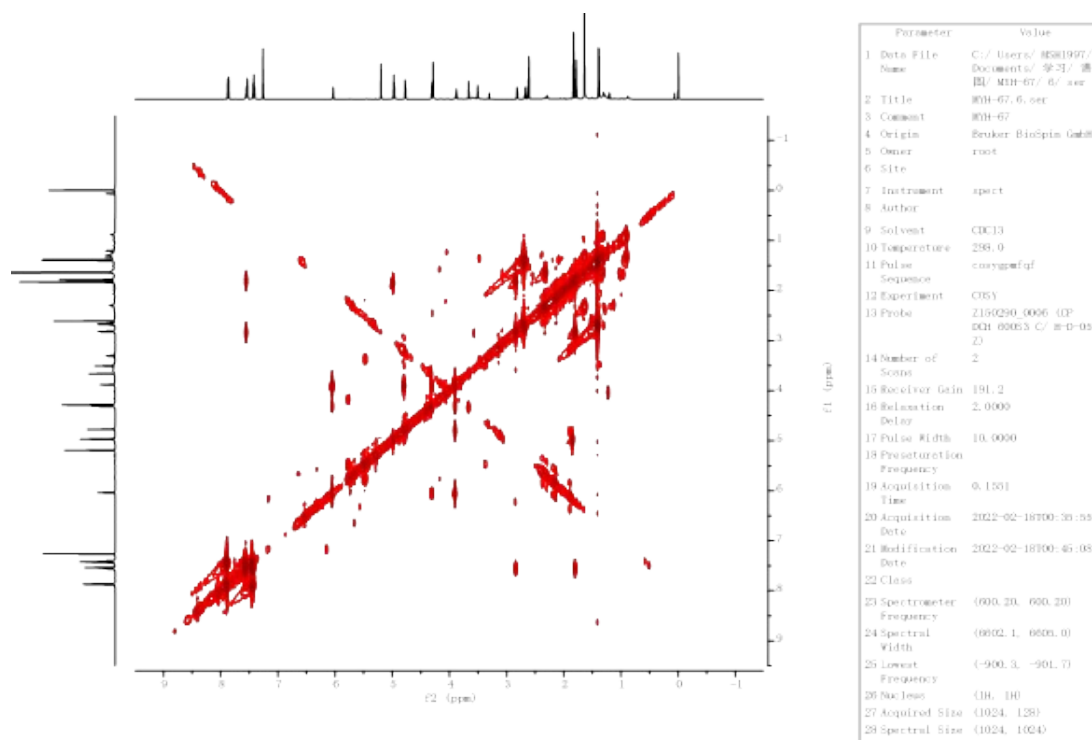


Figure S17. ¹H-¹H COSY spectrum (600 MHz, CDCl₃) of compound **3**

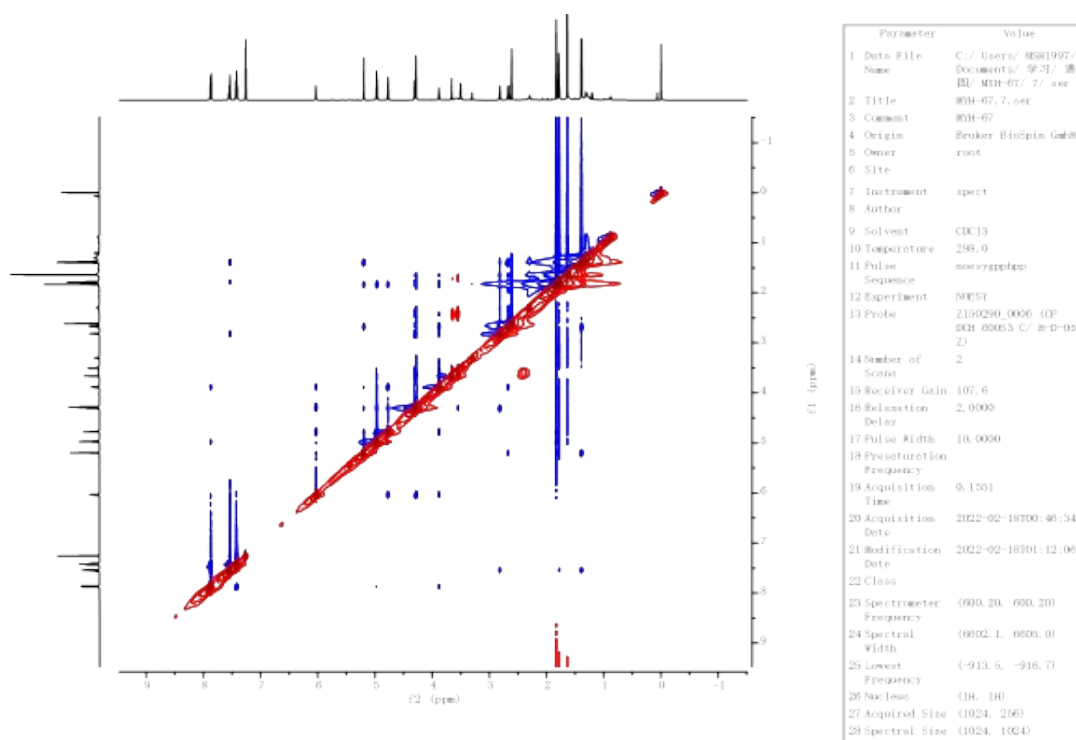


Figure S18. NOESY spectrum (600 MHz, CDCl₃) of compound **3**

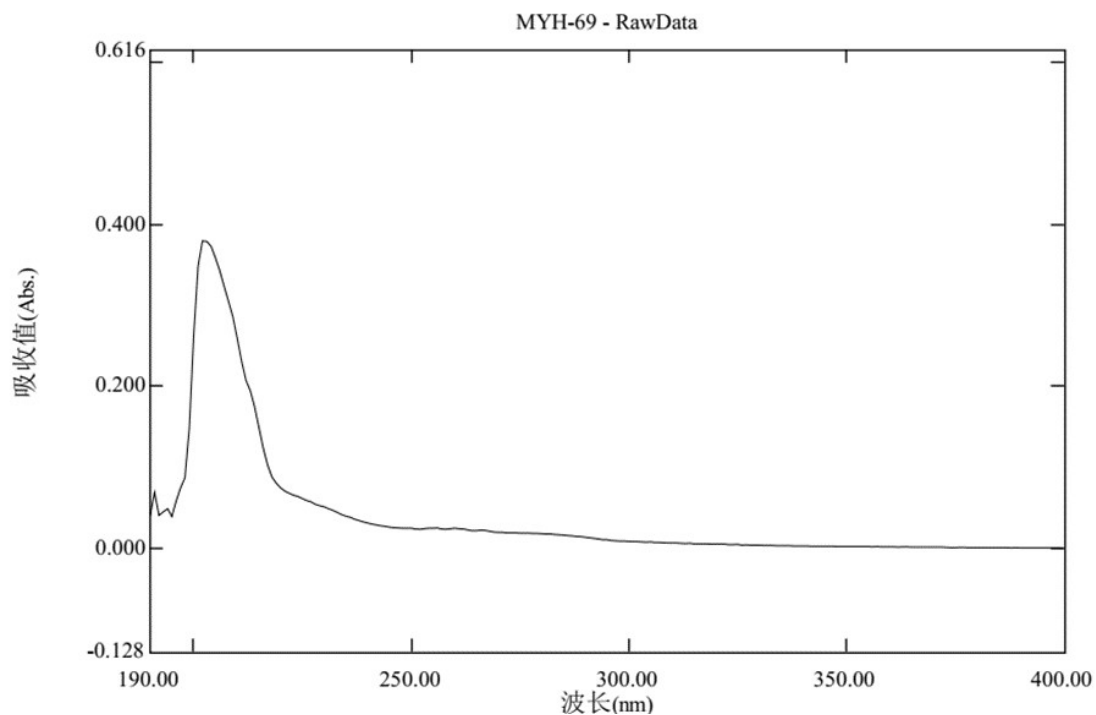


Figure S19. UV spectrum of compound **4**

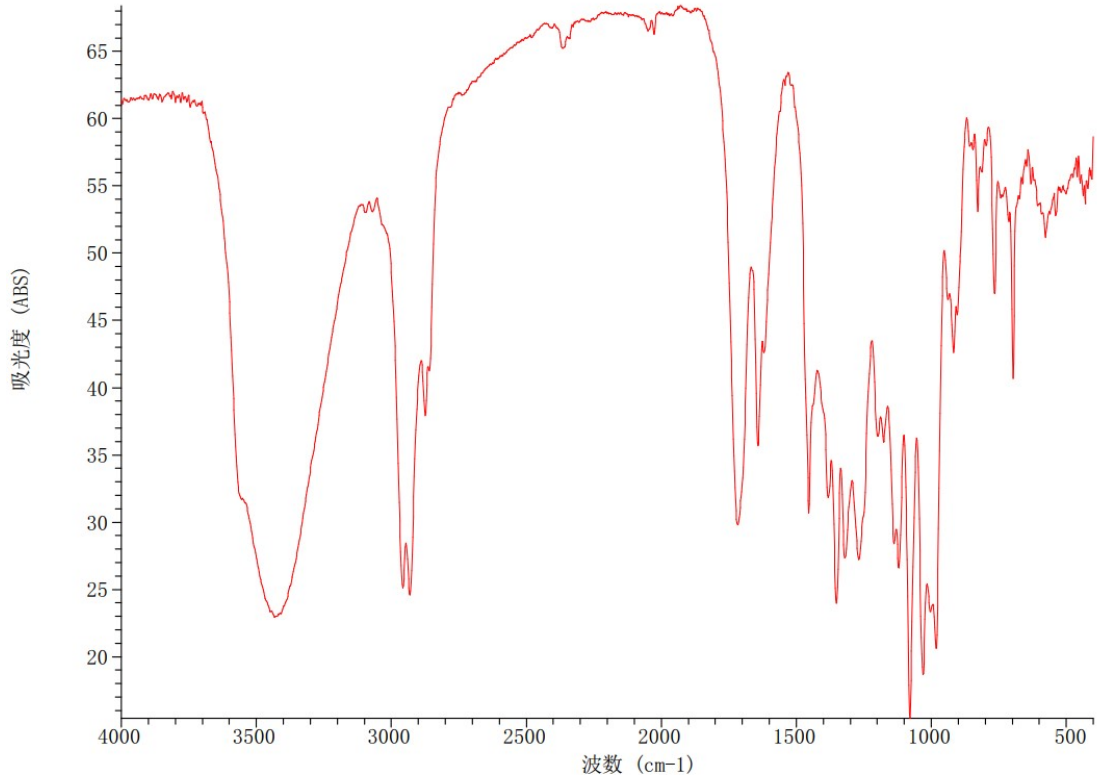
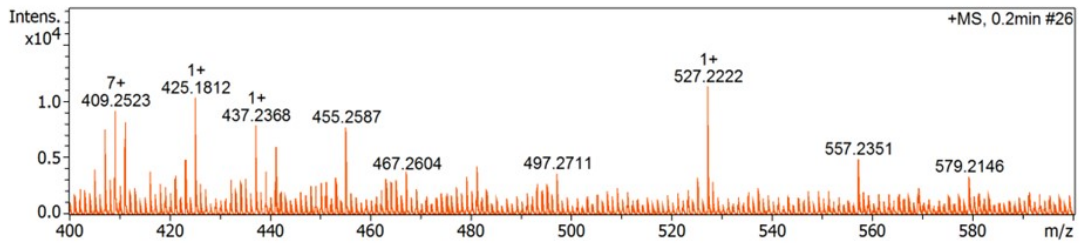


Figure S20. IR spectrum of compound 4

+MS, 0.2min #26



C₃₀H₃₆O₁₀, M+nH, 557.2381

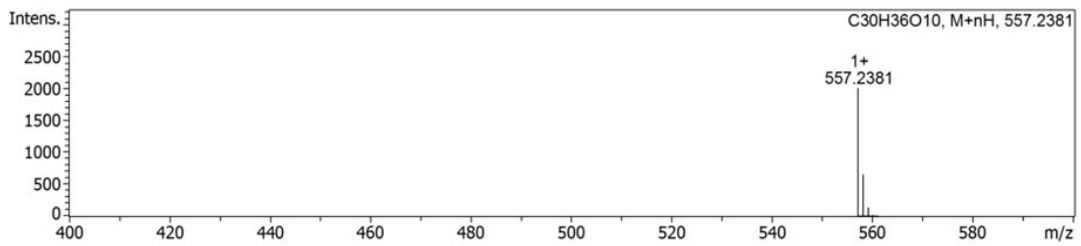


Figure S21. HRESIMS spectrum of compound 4

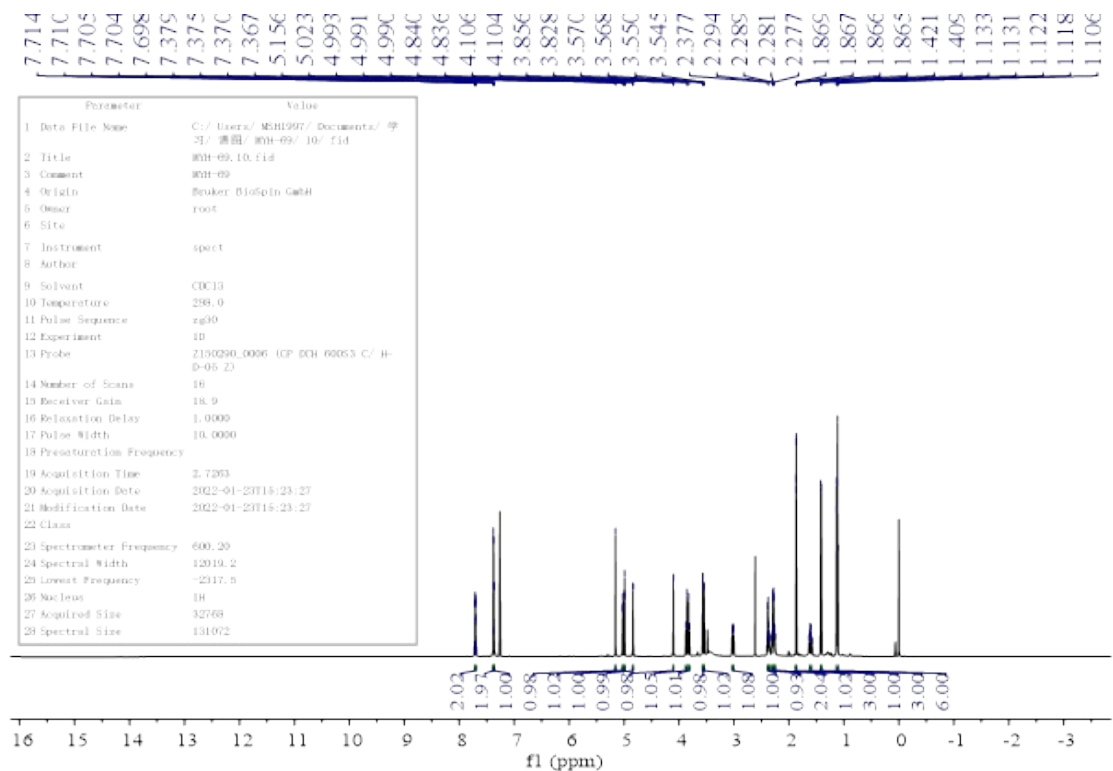


Figure S22. ^1H NMR spectrum (600 MHz, CDCl_3) of compound **4**

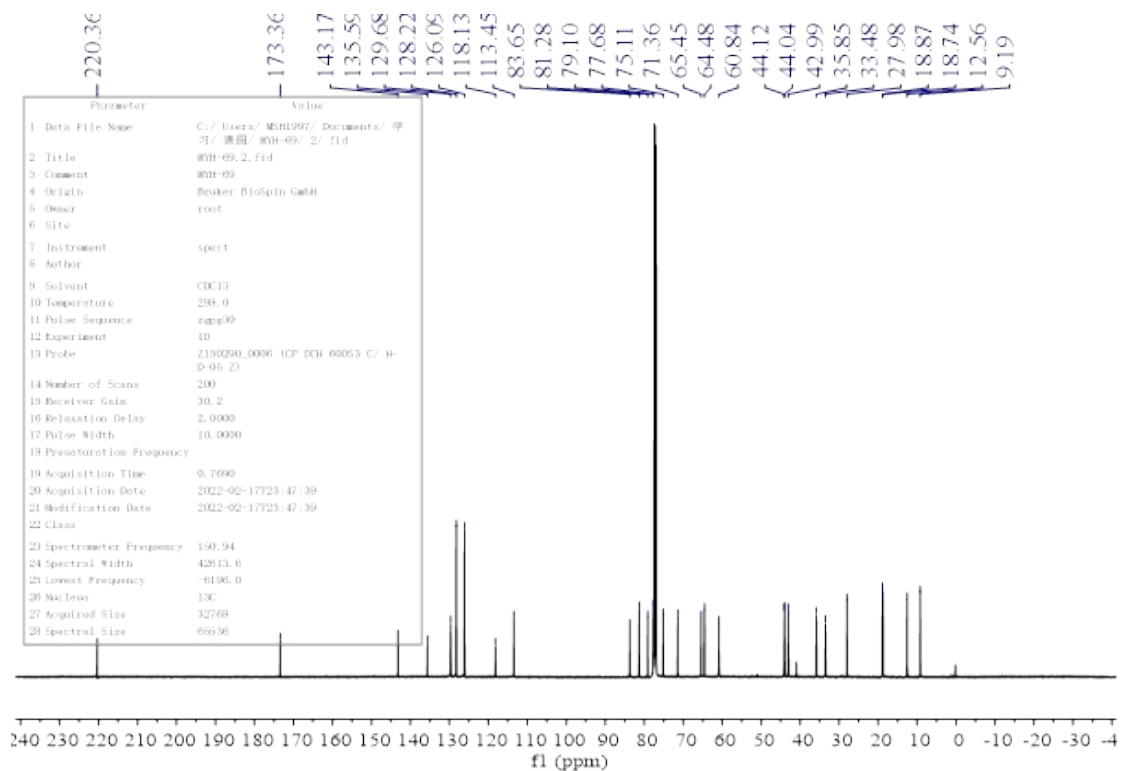


Figure S23. ^{13}C NMR spectrum (150 MHz, CDCl_3) of compound **4**

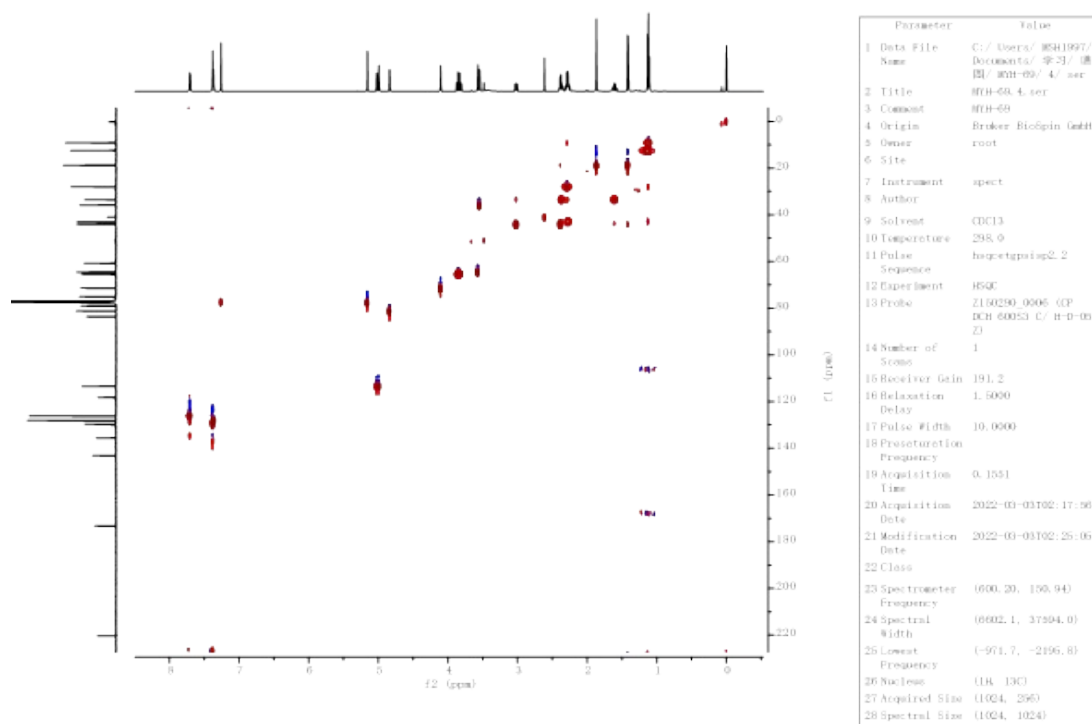


Figure S24. HSQC spectrum (600 MHz, CDCl₃) of compound **4**

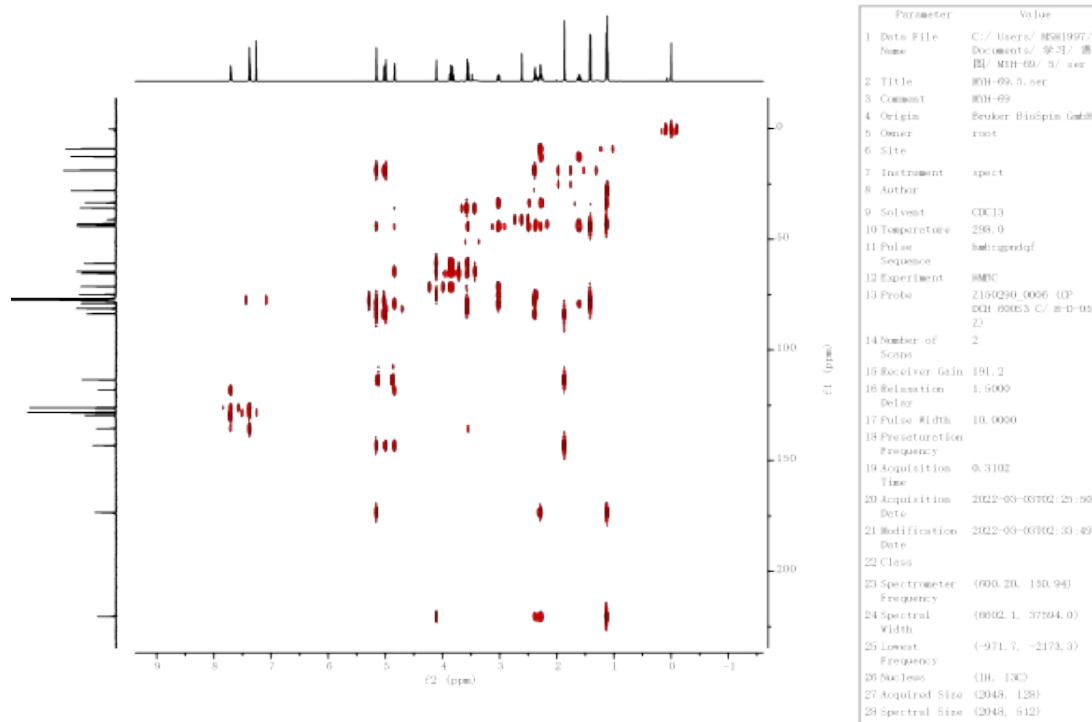


Figure S25. HMBC spectrum (600 MHz, CDCl₃) of compound **4**

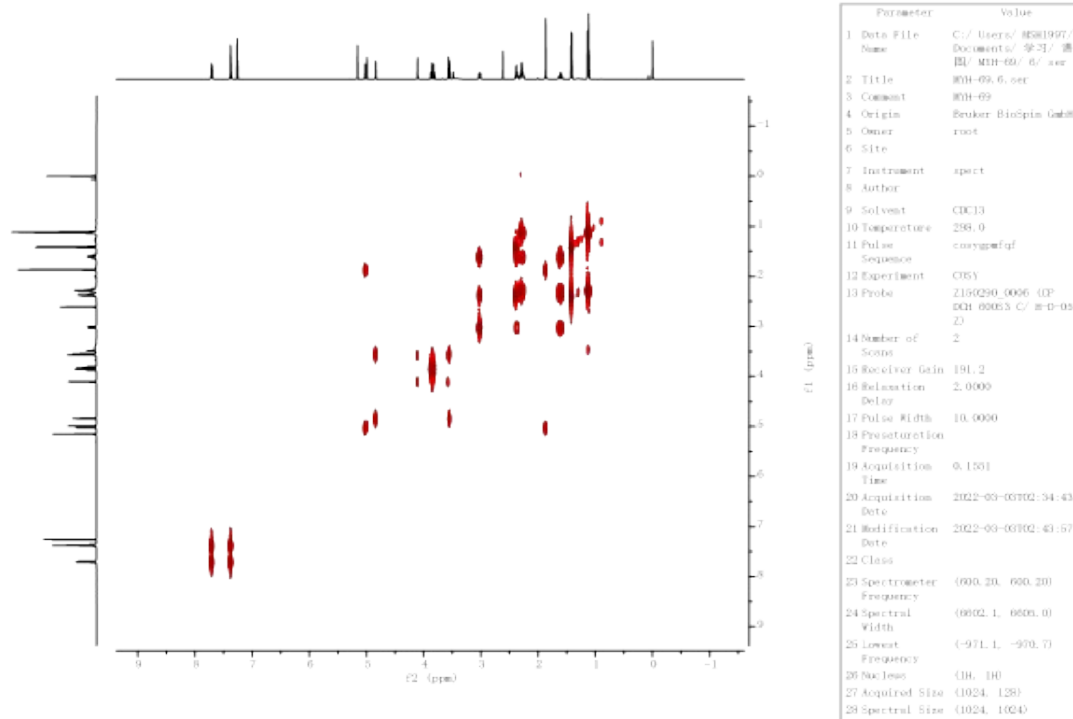


Figure S26. ^1H - ^1H COSY spectrum (600 MHz, CDCl_3) of compound **4**

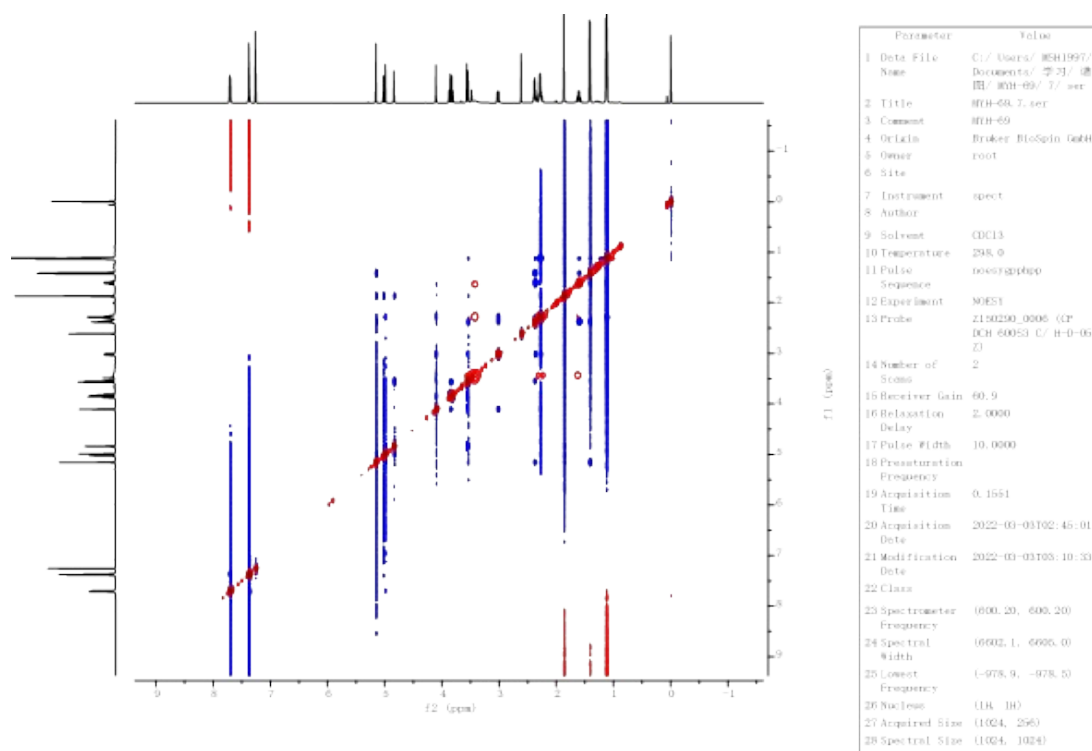


Figure S27. NOESY spectrum (600 MHz, CDCl_3) of compound **4**

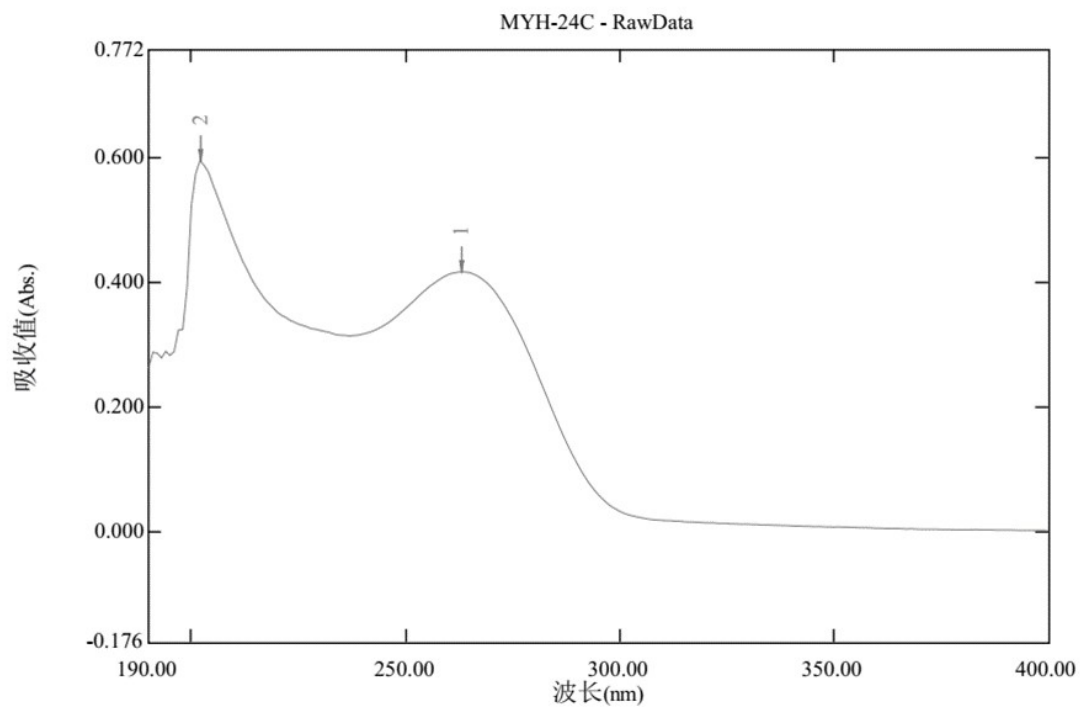


Figure S28. UV spectrum of compound **6**

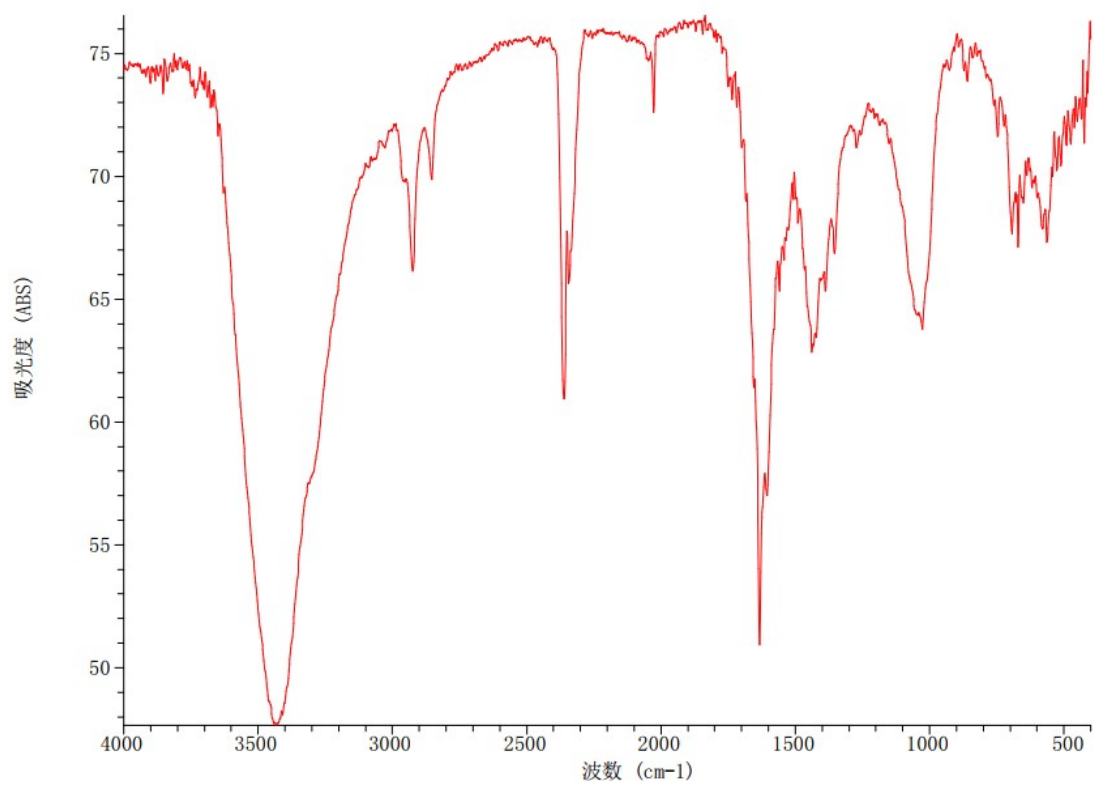
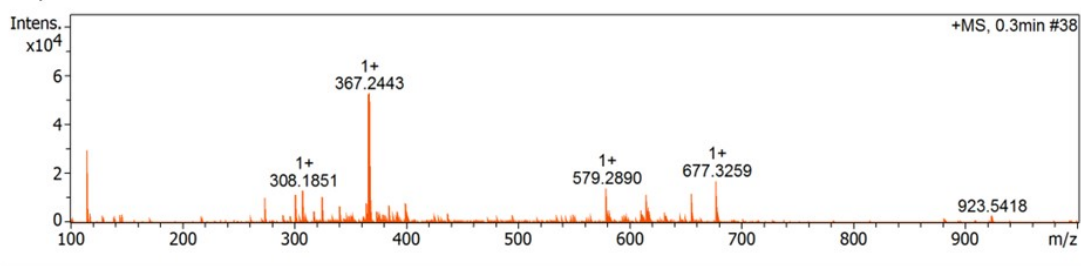


Figure S29. IR spectrum of compound **6**

+MS, 0.3min #38



C32H44O8, M+nNa, 579.2928

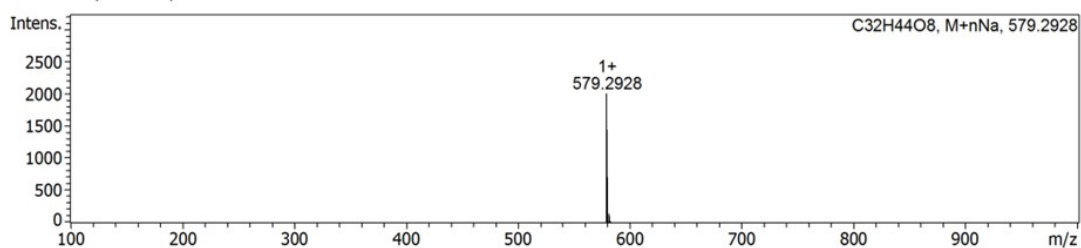


Figure S30. HRESIMS spectrum of compound 6

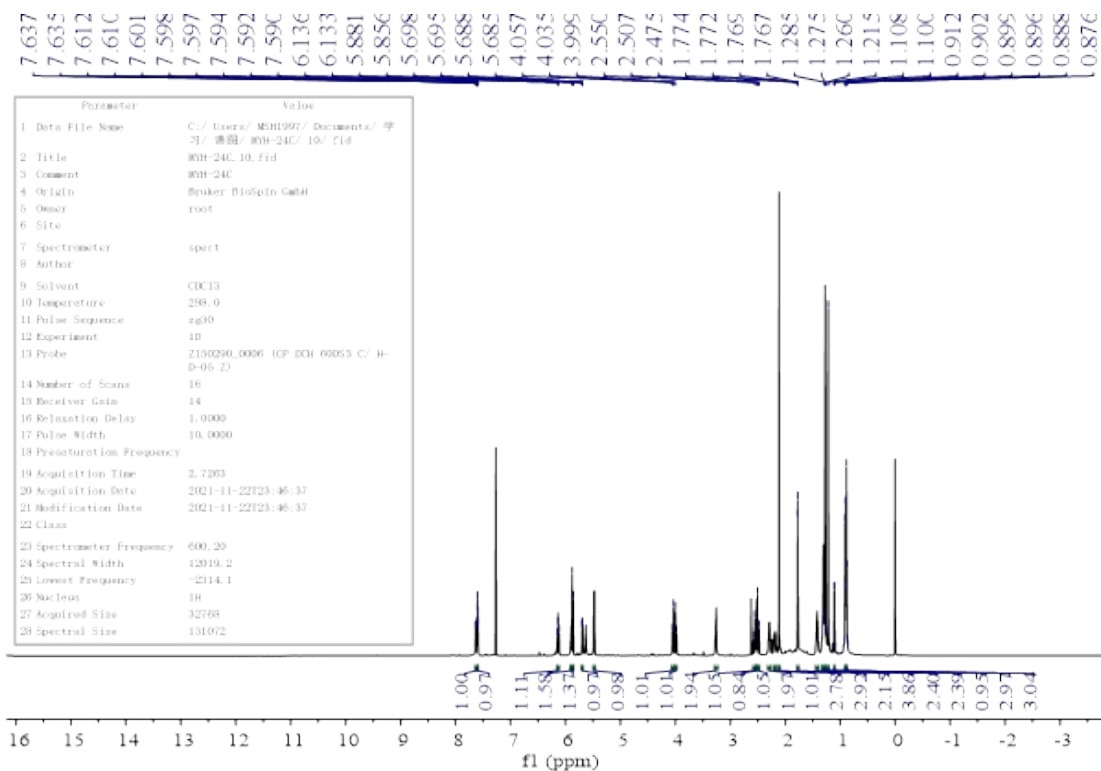


Figure S31. ¹H NMR spectrum (600 MHz, CDCl₃) of compound 6

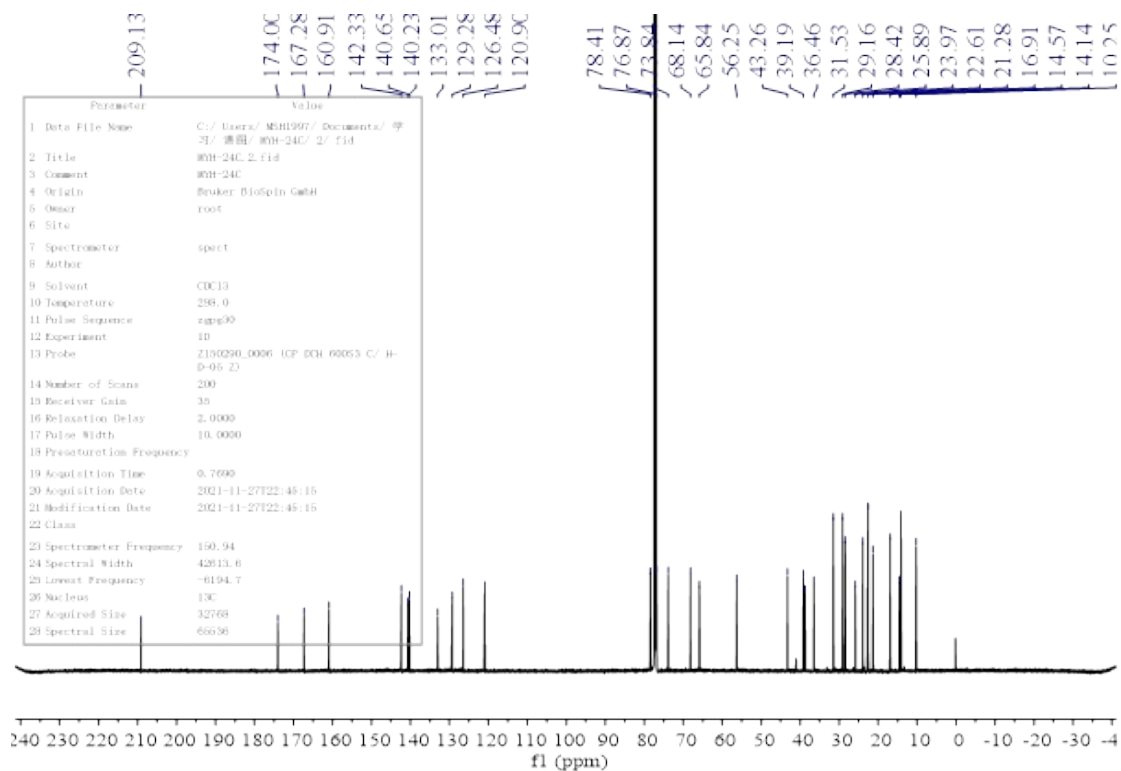


Figure S32. ^{13}C NMR spectrum (150 MHz, CDCl_3) of compound **6**

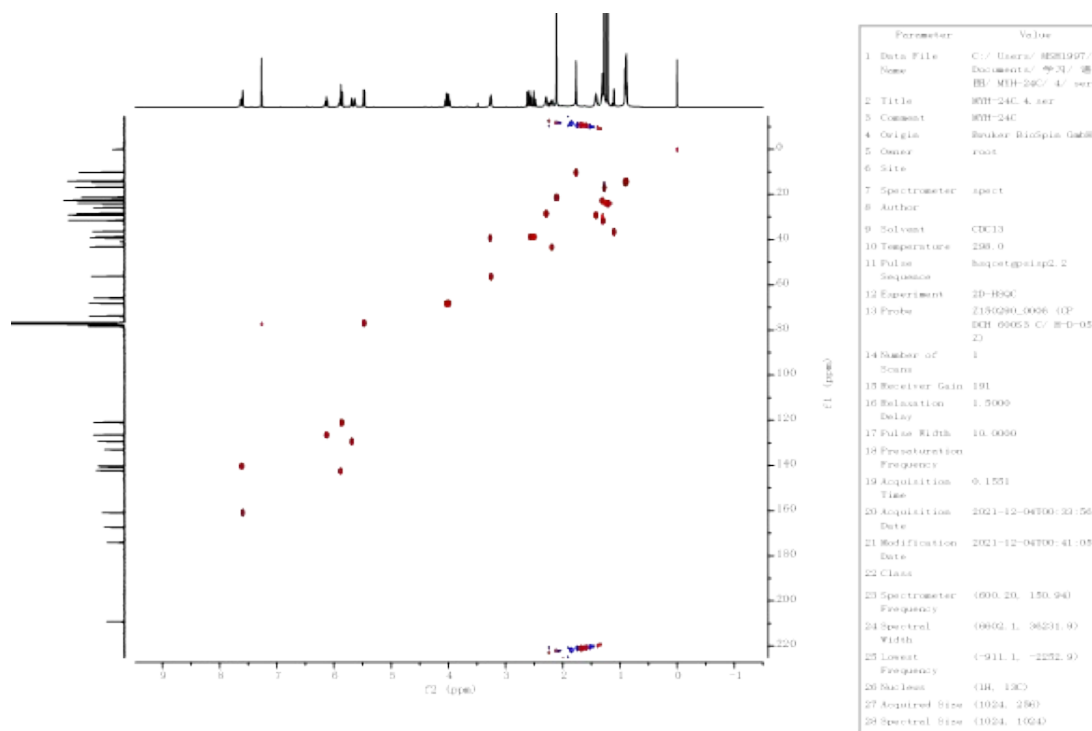


Figure S33. HSQC spectrum (600 MHz, CDCl_3) of compound **6**

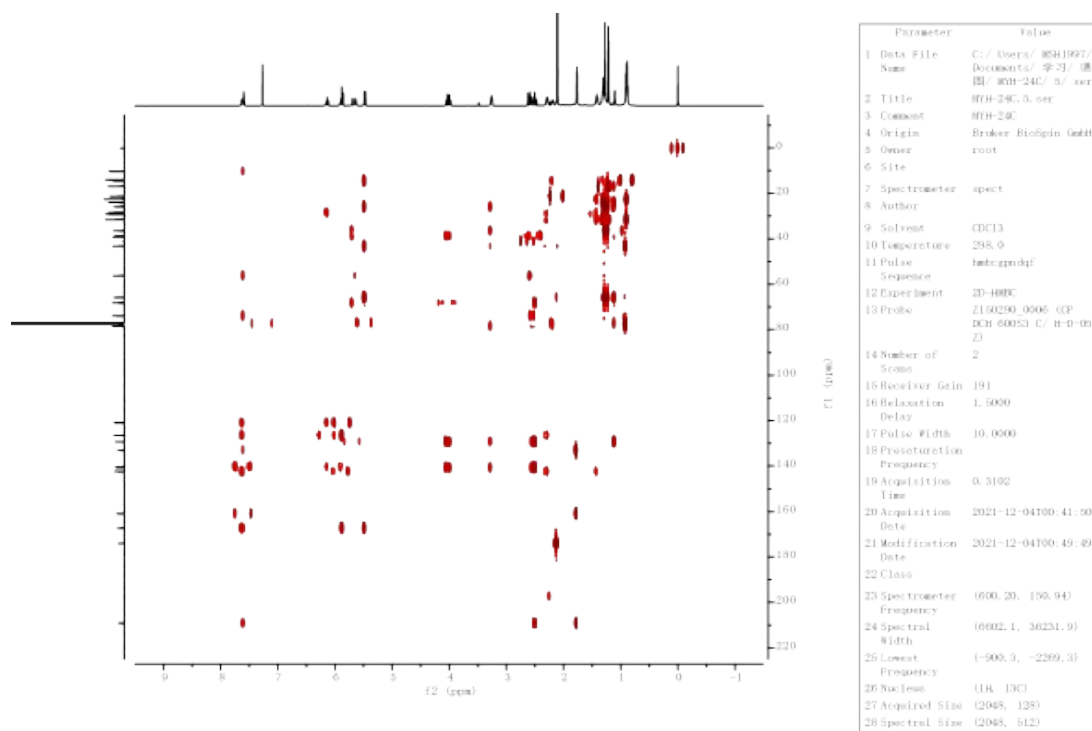


Figure S34. HMBC spectrum (600 MHz, CDCl₃) of compound 6

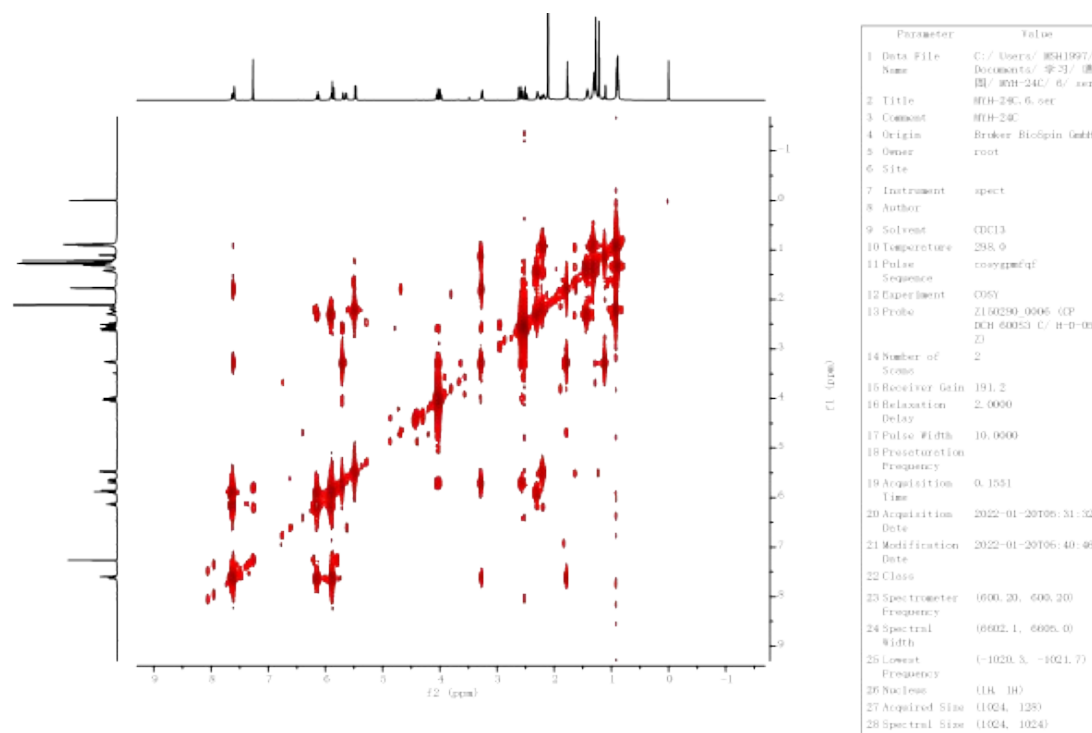


Figure S35. ¹H-¹H COSY spectrum (600 MHz, CDCl₃) of compound 6

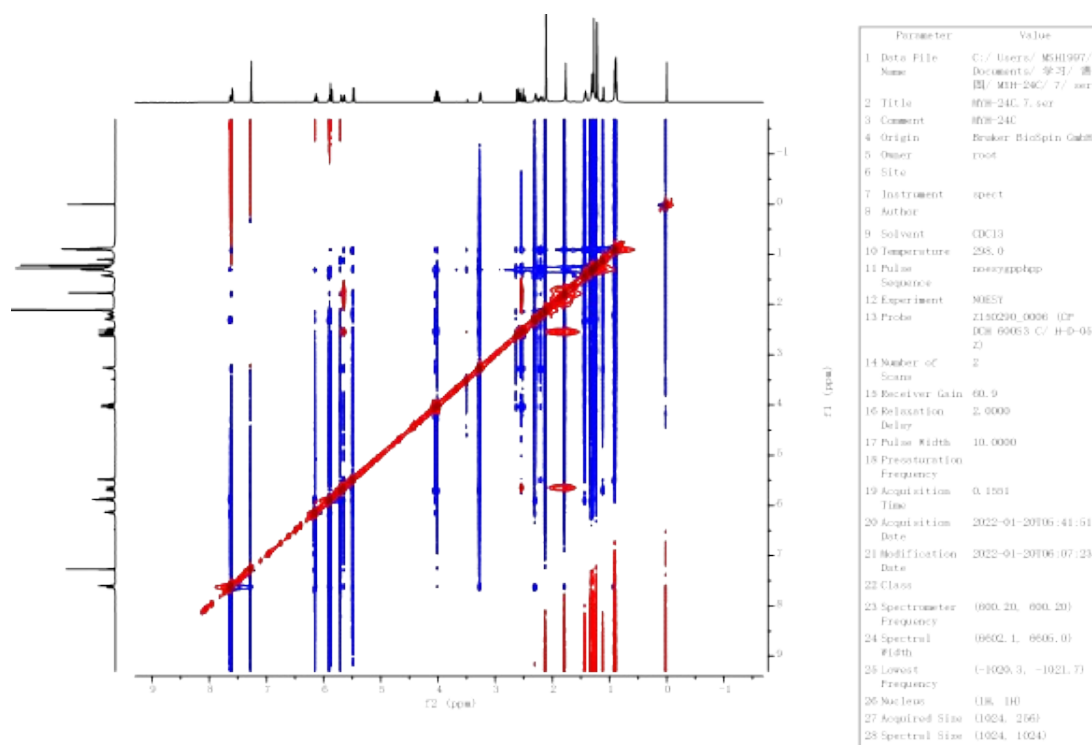


Figure S36. NOESY spectrum (600 MHz, CDCl₃) of compound **6**

TableS1 The analysis result of MetGem software

id	m/z parent	Database		row retention time	MYH-C_64_1	MYH-D_65_1
		search results	row m/z		_3097.mzXML	_3098.mzXML
					Peak area	Peak area
1	467.1984	N/A	467.1984	28.6958	6315032.875	61.41
2	529.2144	N/A	529.2144	33.5571	2516028.285	76.29
3	425.1889	N/A	425.1889	24.1239	1474289.945	323.67
4	631.2516	N/A	631.2516	25.7695	1398672.545	25472.33
5	378.2964	N/A	378.2964	52.8026	2748224.125	402.645
6	353.0712	N/A	353.0712	20.4511	1291442.225	84.19
7	545.2371	N/A	545.2371	18.3907	700462.48	39.195
8	631.2502	N/A	631.2502	34.7773	945866.035	10475.13
9	649.2639	N/A	649.2639	28.328	727338.985	85.855
10	631.2508	N/A	631.2508	31.9843	792121.795	1944008.71
11	463.2847	N/A	463.2847	53.0987	1491518.205	256.57
12	337.0708	N/A	337.0708	27.0446	778327.105	89.47
13	375.0513	N/A	375.0513	20.5536	760827.7	37.42
14	677.3267	N/A	677.3267	42.8518	808965.845	20373.795
15	677.3272	N/A	677.3272	36.7163	1030608.555	3249.94
16	527.2271	N/A	527.2271	15.9518	284764.3775	439.5855

17	814.5804	N/A	814.5804	9.9099	256639.238	8.6435
18	701.4962	N/A	701.4962	9.4809	189083.453	6.169
19	613.2386	N/A	613.2386	39.3608	374539.89	494.305
20	407.1752	N/A	407.1752	28.7022	494020.705	113.14
21	308.1272	N/A	308.1272	27.7787	244844.825	76.865
22	315.0897	N/A	315.0897	27.0028	555243.685	107.2
23	675.3113	N/A	675.3113	34.7126	414263.565	5010.355
24	329.1057	N/A	329.1057	31.2847	319817.175	33.005
25	695.342	N/A	695.342	38.7062	685275.33	59.295
26	649.266	N/A	649.266	30.2366	392178.22	124.965
27	321.0761	N/A	321.0761	34.7283	247248.93	31.59
28	527.2263	N/A	527.2263	16.8616	178186.72	653.08
29	402.2961	N/A	402.2961	47.5347	328685.28	356.075
30	464.1923	N/A	464.1923	28.7208	253271.555	37.765
31	527.2312	N/A	527.2312	28.0822	284253.745	103.545
32	527.2242	N/A	527.2242	20.5882	185182.82	289.83
33	313.073	N/A	313.073	31.2638	254333.605	198.49
34	701.4998	N/A	701.4998	10.2968	117857.649	6.902
35	351.2498	N/A	351.2498	37.9815	413156.725	692.52
36	317.1744	N/A	317.1744	38.4854	231118.92	193.98
37	662.401	N/A	662.401	48.674	427599.36	21.45
38	333.2022	N/A	333.2022	38.4473	227088.935	267.63
39	337.2388	N/A	337.2388	30.3881	296853.615	149.345
40	363.2149	N/A	363.2149	40.0254	163201.65	590.29
41	351.0878	N/A	351.0878	31.3364	143507.965	45.54
42	631.2513	N/A	631.2513	27.6183	470077.065	12335.51
43	445.3101	N/A	445.3101	42.491	399695.88	2731.6
44	430.3305	N/A	430.3305	55.0087	324020.79	43.18
45	338.1994	N/A	338.1994	21.2108	140842.045	412.545
46	301.0721	N/A	301.0721	22.5764	262151.945	398.68
47	409.0909	N/A	409.0909	21.8437	124784.62	35.085
48	497.358	N/A	497.358	50.6603	179797.405	41.47
49	392.3115	N/A	392.3115	55.0657	302246.66	589.855
50	423.2011	N/A	423.2011	18.3307	105501.73	123.415
51	336.1813	N/A	336.1813	48.7443	326328.59	24.31
52	478.2921	N/A	478.2921	41.8539	185993.57	46101.51
53	385.1924	N/A	385.1924	28.6664	189959.045	75.6
54	436.3028	N/A	436.3028	52.9365	257859.46	160.735
55	631.2532	N/A	631.2532	30.9352	140836.125	137.765
56	927.6663	N/A	927.6663	10.295	57186.4995	0
57	449.1626	N/A	449.1626	34.5622	139868.565	55.035
58	367.2466	N/A	367.2466	34.2625	172734.69	449.095
59	461.2688	N/A	461.2688	51.1942	185178.845	139.92
60	678.3302	N/A	678.3302	39.0114	195203.605	594.44

61	677.3325	N/A	677.3325	52.3875	206513.655	48.51
62	444.3083	N/A	444.3083	39.0676	382814.61	278.8
63	531.2209	N/A	531.2209	33.4207	153097.84	44.7
64	727.1064	N/A	727.1064	20.5073	147714.865	9.12
65	478.2945	N/A	478.2945	42.6058	178866.295	619.23
66	393.2612	N/A	393.2612	32.665	315256.03	179.42
67	353.2708	N/A	353.2708	41.8882	125191.585	210.51
68	447.3281	N/A	447.3281	40.9719	457947.04	118.205
69	509.2159	N/A	509.2159	25.7782	143769.44	532.335
70	353.2291	N/A	353.2291	21.5137	158202.55	507.285
71	338.0496	N/A	338.0496	20.5031	122311.785	71.15
72	355.2237	N/A	355.2237	53.0359	183705.93	75.345
73	631.2519	N/A	631.2519	41.0027	83210.085	24.195
74	349.2008	N/A	349.2008	33.3308	81654.875	93.25
75	319.1938	N/A	319.1938	29.9898	77129.48	109.155
76	449.3057	N/A	449.3057	45.8738	84219.06	126.47
77	693.3232	N/A	693.3232	36.7792	173967.01	395.08
78	477.3367	N/A	477.3367	53.3443	154012.855	88.06
79	390.338	N/A	390.338	56.13	194185.52	128.085
80	631.2497	N/A	631.2497	39.2313	85099.22	219041.28
81	480.3081	N/A	480.3081	40.3432	241629.83	438.4
82	437.1977	N/A	437.1977	29.4324	72101.69	190.285
83	374.2318	N/A	374.2318	41.4433	81072.69	44.12
84	573.3025	N/A	573.3025	38.7297	166993.575	78.065
85	661.4199	N/A	661.4199	45.8023	94702.99	58.88
86	315.0852	N/A	315.0852	25.6325	75516.075	55.65
87	402.2611	N/A	402.2611	37.0676	93892.61	369.57
88	309.0095	N/A	309.0095	19.0363	94449.02	69.765
89	707.3018	N/A	707.3018	38.0264	68476.05	159.06
90	331.2217	N/A	331.2217	45.9771	107036.21	182.69
91	331.1879	N/A	331.1879	45.3029	68033.315	149.49
92	677.4128	N/A	677.4128	52.6052	318588.255	120.96
93	411.2528	N/A	411.2528	42.8836	71086.155	143.655
94	927.6639	N/A	927.6639	11.1706	29878.5805	5.291
95	677.3254	N/A	677.3254	47.845	184601.83	339.57
96	709.3185	N/A	709.3185	31.5851	75685.43	382.58
97	669.2557	N/A	669.2557	21.3961	55607.365	90.185
98	400.2853	N/A	400.2853	34.9169	126143.45	71.035
99	659.3223	N/A	659.3223	46.8805	99278.915	116.16
100	432.3113	N/A	432.3113	35.9832	194547.75	115.15
101	549.3161	N/A	549.3161	48.5948	139262.07	48.115
102	675.4391	N/A	675.4391	46.9333	86405.49	64.805
103	806.3973	N/A	806.3973	45.4887	51410.035	19.84
104	353.23	N/A	353.23	19.231	150807.96	2131.19

105	301.0723	N/A	301.0723	19.3554	59563.765	654.06
106	349.2016	N/A	349.2016	31.6732	63151.19	88.74
107	335.1868	N/A	335.1868	24.9886	46088.045	161.98
108	404.2748	N/A	404.2748	36.193	178669.565	140.53
109	613.2448	N/A	613.2448	30.7924	58635.325	113.975
110	311.0585	N/A	311.0585	31.2474	75014.835	71.19
111	443.169	N/A	443.169	12.0627	43076.0605	531.286
112	307.0625	N/A	307.0625	26.2838	55778.135	54.21
113	543.3207	N/A	543.3207	42.3858	65712.06	90.55
114	385.1907	N/A	385.1907	24.0582	49674.22	326
115	332.2974	N/A	332.2974	58.594	88800.825	24.72
116	427.27	N/A	427.27	16.591	64693.8825	168.19
117	372.1827	N/A	372.1827	21.6102	37290.32	57.72
118	675.3113	N/A	675.3113	40.8915	128935.025	2366.48
119	695.3396	N/A	695.3396	42.1555	52629.91	69.345
120	353.2044	N/A	353.2044	30.3522	46512.165	103.29
121	443.2798	N/A	443.2798	41.9202	61984.52	106.305
122	689.294	N/A	689.294	37.0198	55663.205	123.21
123	509.2154	N/A	509.2154	30.9074	51816.005	200.72
124	475.3357	N/A	475.3357	10.3802	30522.0215	14.04
125	462.3223	N/A	462.3223	32.7851	52527.8	111.15
126	395.2741	N/A	395.2741	35.8143	111004.22	145.78
127	317.2089	N/A	317.2089	37.6998	107552.7	269.75
128	422.1833	N/A	422.1833	24.0852	34508.97	36.48
129	402.2643	N/A	402.2643	38.3613	64466.49	113.38
130	693.3254	N/A	693.3254	26.054	43379.335	193.3
131	527.2308	N/A	527.2308	30.0421	68279.99	62.68
132	334.2012	N/A	334.2012	42.2175	67760.405	183.435
133	477.3017	N/A	477.3017	56.2462	106019.815	225.12
134	419.2453	N/A	419.2453	39.0397	76280.565	85.8
135	509.2149	N/A	509.2149	34.7657	54939.84	226.995
136	555.2925	N/A	555.2925	36.6082	83795.895	964.35
137	359.2185	N/A	359.2185	30.369	45890.275	153.975
138	711.3333	N/A	711.3333	29.0453	60909.87	173.72
139	505.2464	N/A	505.2464	28.0031	44754.265	157.715
140	737.2635	N/A	737.2635	22.6578	39067.175	40.185
141	625.2079	N/A	625.2079	35.6409	42156.14	27.54
142	404.3122	N/A	404.3122	53.4447	84955.4	140.605
143	501.3507	N/A	501.3507	57.8712	95245.875	1497.275
144	323.151	N/A	323.151	15.2255	33751.8105	28170.9065
145	353.2329	N/A	353.2329	26.2204	77971.45	134.68
146	588.4093	N/A	588.4093	35.2222	72669.22	75.305
147	476.2802	N/A	476.2802	45.8422	48136.605	31.565
148	491.2051	N/A	491.2051	39.2737	45243.62	170.605

149	567.2542	N/A	567.2542	32.6869	39773.37	128.22
150	649.2988	N/A	649.2988	31.1527	42442.455	92.54
151	531.325	N/A	531.325	39.0641	50555.555	85.3
152	651.1468	N/A	651.1468	26.9388	53820.815	79.38
153	707.3017	N/A	707.3017	28.1876	38351.515	266.26
154	316.2275	N/A	316.2275	32.3904	48495.725	56.91
155	405.1901	N/A	405.1901	15.8915	25353.6585	772.0455
156	563.3301	N/A	563.3301	52.7307	144895.085	131.67
157	414.2955	N/A	414.2955	55.1024	131360.055	80.185
158	475.3346	N/A	475.3346	11.1443	23565.824	19.599
159	393.2617	N/A	393.2617	29.1453	86137.395	1862.43
160	593.2636	N/A	593.2636	35.4998	35594.545	462.495
161	434.2874	N/A	434.2874	29.4344	96082.695	127.05
162	523.3617	N/A	523.3617	56.6313	61067.295	146.865
163	448.3041	N/A	448.3041	34.1268	106861.745	201.385
164	693.3215	N/A	693.3215	31.2233	57828.885	397.955
165	678.3312	N/A	678.3312	37.7327	35739.83	151.49
166	588.4139	N/A	588.4139	9.1487	22884.333	10.648
167	418.7908	N/A	418.7908	10.042	34880.429	0
168	374.3042	N/A	374.3042	45.9252	52956.29	36.2
169	307.061	N/A	307.061	25.9543	22678.37	141.11
170	456.2025	N/A	456.2025	28.9357	37954.325	65.25
171	400.2817	N/A	400.2817	34.0931	35012.015	186.675
172	377.2658	N/A	377.2658	41.0307	50044.605	88.91
173	548.0739	N/A	548.0739	20.4519	40174.325	10.075
174	464.2812	N/A	464.2812	37.4672	30796.505	216.63
175	509.216	N/A	509.216	29.1511	30846.765	337.035
176	465.2958	N/A	465.2958	55.9236	77405.37	244.265
177	304.261	N/A	304.261	49.5927	56400.945	43.275
178	463.3465	N/A	463.3465	54.6266	90107.34	819.13
179	397.1295	N/A	397.1295	13.3291	23723.917	281.386
180	553.2755	N/A	553.2755	34.7182	34780.91	543.47
181	376.2129	N/A	376.2129	25.3508	31044.165	137.27
182	369.195	N/A	369.195	19.2257	56407.285	785.84
183	677.3253	N/A	677.3253	39.8888	38987.425	137458.02
184	491.3782	N/A	491.3782	54.9736	94772.13	211.22
185	631.2537	N/A	631.2537	38.3713	32057.875	53
186	408.2731	N/A	408.2731	47.2746	29677.735	309.875
187	353.0409	N/A	353.0409	27.1447	47190.225	15.275
188	423.2014	N/A	423.2014	20.9193	23286.68	224.925
189	353.2304	N/A	353.2304	22.5447	44480.495	124857.31
190	414.2986	N/A	414.2986	36.8033	105808.05	91.625
191	509.2157	N/A	509.2157	27.8255	63345.64	395.67
192	347.2195	N/A	347.2195	41.0028	97242.275	316.025

193	531.8737	N/A	531.8737	10.7251	17396.8	12.348
194	422.2917	N/A	422.2917	52.9365	68251.485	145.59
195	555.293	N/A	555.293	39.0114	70570.265	281.575
196	363.2479	N/A	363.2479	32.2117	33329.135	109.215
197	573.2994	N/A	573.2994	36.8145	31159.545	2408.99
198	501.3535	N/A	501.3535	59.1644	81928.03	207.74
199	351.215	N/A	351.215	17.4856	68385.725	6544.36
200	317.2079	N/A	317.2079	35.8387	39896.05	202.885
201	571.2167	N/A	571.2167	21.518	17326.63	447.06
202	727.3308	N/A	727.3308	23.0546	48642.59	43.22
203	372.048	N/A	372.048	20.5207	33002.3	11.75
204	337.2019	N/A	337.2019	28.2387	37703.95	111.68
205	307.1153	N/A	307.1153	11.6374	14780.253	391.7355
206	446.3241	N/A	446.3241	45.843	44753.955	235.205
207	419.2824	N/A	419.2824	39.8882	21338.49	106.07
208	395.2405	N/A	395.2405	43.2622	52237.145	160.535
209	379.1182	N/A	379.1182	19.4017	23040.78	94.845
210	314.0755	N/A	314.0755	20.2849	20487.61	73.425
211	727.3323	N/A	727.3323	30.2042	24803.31	24.88
212	593.2773	N/A	593.2773	39.8553	23969.19	79.455
213	379.2449	N/A	379.2449	21.4309	28069.135	431.86
214	420.3067	N/A	420.3067	38.3552	60268.38	64.055
215	402.2647	N/A	402.2647	38.9159	28319.68	389.18
216	335.0941	N/A	335.0941	24.1572	19818.05	80.22
217	557.202	N/A	557.202	17.2522	19908.665	39.255
218	437.2377	N/A	437.2377	41.7358	23988.02	408.26
219	429.2646	N/A	429.2646	34.5771	36863.155	108.17
220	323.0574	N/A	323.0574	22.7441	18643.01	202.15
221	481.3747	N/A	481.3747	46.1101	23661.445	118.44
222	341.2662	N/A	341.2662	46.0998	35861.81	72.98
223	375.2131	N/A	375.2131	19.3139	40440.89	487.98
224	400.2803	N/A	400.2803	52.6157	73921.835	143.75
225	365.1934	N/A	365.1934	46.2288	21445.21	64.715
226	503.3679	N/A	503.3679	57.5297	45511.45	326.58
227	509.2179	N/A	509.2179	42.9795	31540.455	133.33
228	375.2511	N/A	375.2511	42.7885	49929.37	195.635
229	323.0272	N/A	323.0272	26.5867	34049.55	39.545
230	486.1953	N/A	486.1953	35.6589	20510.35	51.34
231	709.3198	N/A	709.3198	25.9869	28493.455	78.87
232	416.3115	N/A	416.3115	48.9082	33617.735	512.665
233	527.2329	N/A	527.2329	29.6174	23299.855	88.74
234	521.3468	N/A	521.3468	42.1093	61227.26	141.045
235	649.2967	N/A	649.2967	37.6415	23635.985	79035.595
236	308.1258	N/A	308.1258	29.2232	21688.395	62.695

237	659.3168	N/A	659.3168	42.8792	15227.43	248.84
238	537.3756	N/A	537.3756	50.7493	33840	277.04
239	371.1761	N/A	371.1761	9.1379	13186.946	381.921
240	691.3131	N/A	691.3131	34.3971	49778.93	343.54
241	478.3015	N/A	478.3015	37.7817	71119.245	79.9
242	331.0866	N/A	331.0866	20.6472	17117.99	27.35
243	691.3097	N/A	691.3097	29.4951	38635.575	217.08
244	324.1794	N/A	324.1794	16.8199	15651.085	238.24
245	348.1803	N/A	348.1803	18.2286	11449.735	152.99
246	494.2897	N/A	494.2897	43.0048	23259.775	293.11
247	496.3104	N/A	496.3104	36.0309	23653.355	298.66
248	448.2828	N/A	448.2828	54.4873	19042.235	244.575
249	318.239	N/A	318.239	31.3693	20980.375	51.645
250	667.1148	N/A	667.1148	27.057	29424.745	18.525
251	322.2512	N/A	322.2512	9.5352	12583.503	38.301
252	703.2752	N/A	703.2752	36.2858	20448.46	38.275
253	300.0633	N/A	300.0633	27.1338	42603.26	162.715
254	693.3295	N/A	693.3295	39.9181	30049.035	87
255	379.0847	N/A	379.0847	22.1781	18786.8	100.81
256	406.2927	N/A	406.2927	39.6234	40315.43	48.455
257	480.329	N/A	480.329	25.0111	9083.98	135.25
258	379.2458	N/A	379.2458	21.9085	27219.815	306.465
259	731.176	N/A	731.176	22.9477	17158.65	12.9
260	462.3216	N/A	462.3216	33.5698	38001.615	82.875
261	393.0596	N/A	393.0596	20.4076	29384.905	25.83
262	404.277	N/A	404.277	41.1004	37571.935	174.85
263	589.3585	N/A	589.3585	45.8695	26060.615	33.18
264	477.3611	N/A	477.3611	52.2828	38629.37	397.855
265	737.2564	N/A	737.2564	23.1883	13024.25	77.695
266	425.2303	N/A	425.2303	35.2447	24569.775	255.275
267	416.276	N/A	416.276	32.2368	100539.52	142.09
268	334.2352	N/A	334.2352	25.0282	33088.595	50.32
269	303.1194	N/A	303.1194	21.5358	15139.775	115.79
270	653.2625	N/A	653.2625	30.3352	19122.04	42.57
271	431.2925	N/A	431.2925	41.7003	40445.935	385.14
272	563.3288	N/A	563.3288	57.8708	99509.64	49.44
273	509.2146	N/A	509.2146	39.3069	21581.615	362.72
274	643.241	N/A	643.241	20.5263	16896.76	149.23
275	347.1854	N/A	347.1854	25.0131	26390.93	196.325
276	351.1916	N/A	351.1916	27.1702	16321.845	141.57
277	377.2272	N/A	377.2272	28.3109	33899.965	196.265
278	501.3244	N/A	501.3244	47.021	24360.58	50.82
279	393.2617	N/A	393.2617	28.6596	39944.975	1708.105
280	428.2774	N/A	428.2774	39.9784	32693.375	381.305

281	460.3365	N/A	460.3365	49.2647	33987.445	1848.045
282	737.4616	N/A	737.4616	31.2188	21700.75	34.155
283	503.3677	N/A	503.3677	59.1893	66717.715	154.635
284	329.1049	N/A	329.1049	32.1743	27528.355	42.86
285	345.1015	N/A	345.1015	26.1019	22221.975	56.305
286	306.2777	N/A	306.2777	56.9525	36794.97	53.28
287	310.1656	N/A	310.1656	13.6045	14485.769	184.7715
288	391.2462	N/A	391.2462	30.7027	27857.235	2058.125
289	364.2769	N/A	364.2769	54.1222	29395.23	144.02
290	480.3292	N/A	480.3292	25.0401	11281.42	135.25
291	491.2096	N/A	491.2096	30.7406	17084.625	64.02
292	369.2956	N/A	369.2956	55.3655	43438.335	55.655
293	419.2823	N/A	419.2823	39.6603	4223.615	57.24
294	449.2655	N/A	449.2655	48.5664	38612.195	123.855
295	501.1225	N/A	501.1225	27.1286	11856.89	26.13
296	436.3373	N/A	436.3373	55.0768	33438.87	47.42
297	505.3957	N/A	505.3957	57.1361	54590.52	281.36
298	318.245	N/A	318.245	30.4153	17479.205	67.525
299	324.1796	N/A	324.1796	18.8205	14802.04	99.655
300	645.2558	N/A	645.2558	19.6541	12440.82	34.56
301	353.2294	N/A	353.2294	34.2872	42909.695	209.34
302	388.2448	N/A	388.2448	35.4363	19010.2	23.4
303	351.2165	N/A	351.2165	36.1744	22858.02	148.65
304	456.2764	N/A	456.2764	32.1205	44995.575	133.885
305	477.3635	N/A	477.3635	57.0065	47895.91	357.06
306	359.2206	N/A	359.2206	29.4769	22382.585	169.865
307	394.2236	N/A	394.2236	21.2219	13599.11	121.9
308	340.1207	N/A	340.1207	25.3968	15276.74	26.73
309	537.1801	N/A	537.1801	24.3143	14360.025	41.485
310	447.1505	N/A	447.1505	35.3132	19128.53	25.53
311	471.2285	N/A	471.2285	30.6447	19182.72	83.525
312	364.2808	N/A	364.2808	58.2169	35846.765	83.16
313	405.1894	N/A	405.1894	18.342	16182.89	18879.585
314	322.2024	N/A	322.2024	24.8798	65917.42	61.99
315	505.2258	N/A	505.2258	37.5191	14135.57	37.62
316	442.2922	N/A	442.2922	39.9084	25350.56	228.21
317	467.3189	N/A	467.3189	45.4353	25952.995	47.61
318	381.1321	N/A	381.1321	19.4344	17271.885	147.195
319	420.1999	N/A	420.1999	18.2034	11351.995	100.33
320	377.2118	N/A	377.2118	45.8526	19920.18	85.27
321	573.3033	N/A	573.3033	39.5962	20015.995	603.815
322	462.3193	N/A	462.3193	41.5863	29727.325	117.515
323	542.2346	N/A	542.2346	18.3197	9404.33	47.04
324	343.1946	N/A	343.1946	33.9177	19744.455	95.705

325	321.1708	N/A	321.1708	33.3291	15385.49	119.02
326	460.3042	N/A	460.3042	28.0318	39336.285	177.425
327	347.2183	N/A	347.2183	42.793	44370.175	367.285
328	346.1991	N/A	346.1991	35.335	36269.18	55.385
329	339.2486	N/A	339.2486	33.3546	28706.63	47.56
330	647.2348	N/A	647.2348	25.7741	22103.795	184.31
331	651.244	N/A	651.244	20.9652	9765.84	77.89
332	526.2098	N/A	526.2098	33.4308	18364.28	22
333	458.2895	N/A	458.2895	29.706	33114.76	88.81
334	649.2994	N/A	649.2994	33.7642	12342.445	59.92
335	496.3103	N/A	496.3103	36.7272	15951.94	60.135
336	316.227	N/A	316.227	33.7431	15148.145	108.765
337	479.2676	N/A	479.2676	46.1894	15041.95	73.2
338	737.2592	N/A	737.2592	23.4042	37090.38	75.88
339	627.2809	N/A	627.2809	31.8357	20491.5	42.69
340	381.2614	N/A	381.2614	31.6898	44484.06	476.24
341	306.173	N/A	306.173	36.4833	36882.895	48.245
342	507.3429	N/A	507.3429	59.3259	43799.625	263.31
343	405.1926	N/A	405.1926	16.8381	15106.23	273.01
344	448.3012	N/A	448.3012	32.1628	28348.25	99.455
345	555.2929	N/A	555.2929	48.1995	50194.42	135.14
346	613.2398	N/A	613.2398	31.9588	17710.715	1686.595
347	496.3056	N/A	496.3056	32.9683	13726.315	121.145
348	529.3081	N/A	529.3081	39.6947	23187.355	260.41
349	671.2838	N/A	671.2838	46.4176	19804.59	71.505
350	523.3249	N/A	523.3249	27.8856	55068.09	88.44
351	314.2488	N/A	314.2488	51.3423	25592.65	40.14
352	329.1753	N/A	329.1753	26.0804	45945.595	190.765
353	310.1615	N/A	310.1615	14.3779	8868.402	70.4375
354	509.215	N/A	509.215	31.9504	16668.715	58159
355	476.336	N/A	476.336	42.9496	19176.405	66.33
356	427.2676	N/A	427.2676	18.5129	24601.015	87.605
357	374.2325	N/A	374.2325	39.368	24815.9	64.66
358	356.3196	N/A	356.3196	52.7138	39170.895	81.33
359	693.3208	N/A	693.3208	28.5227	18719.77	328.16
360	398.2689	N/A	398.2689	32.1528	38879.325	101.295
361	322.253	N/A	322.253	9.9331	11256.7665	15.274
362	384.1812	N/A	384.1812	45.6861	13199.06	36.965
363	705.2866	N/A	705.2866	30.4812	15822.42	262.145
364	392.3101	N/A	392.3101	58.1949	36985.76	72.52
365	381.2595	N/A	381.2595	32.6374	34474.085	389.08
366	331.2229	N/A	331.2229	45.0501	6036.205	522.155
367	391.2455	N/A	391.2455	33.118	27121.06	153042.58
368	651.2453	N/A	651.2453	22.7752	12467.115	41.565

369	381.1342	N/A	381.1342	17.4092	10860.7	84.39
370	428.2798	N/A	428.2798	41.0252	21314.145	71.47
371	448.3388	N/A	448.3388	44.2572	31056.265	254.965
372	335.2072	N/A	335.2072	45.8678	14888.395	693.94
373	345.2019	N/A	345.2019	31.5968	19062.055	153.97
374	449.1621	N/A	449.1621	35.357	13366.15	78.395
375	354.1862	N/A	354.1862	48.8309	29924.42	41.775
376	634.4182	N/A	634.4182	9.4494	8475.87	7.6005
377	448.3372	N/A	448.3372	43.1362	29256.575	399.35
378	627.2448	N/A	627.2448	29.07	14997.945	0
379	507.3305	N/A	507.3305	35.7833	27032.98	140.55
380	571.3665	N/A	571.3665	39.0538	13899.68	148.5
381	631.2503	N/A	631.2503	37.1781	13450.63	261258.135
382	415.141	N/A	415.141	15.6308	10952.053	64.902
383	333.2034	N/A	333.2034	33.2216	41906.495	292.17
384	527.2262	N/A	527.2262	26.1919	15134.545	13972.18
385	709.3264	N/A	709.3264	32.2859	62870.67	157.31
386	346.1632	N/A	346.1632	16.7949	8903.6175	134.175
387	501.2837	N/A	501.2837	37.5123	13796.43	75
388	451.2151	N/A	451.2151	25.6512	13642.47	123.8
389	365.2691	N/A	365.2691	47.2291	16733.455	118.275
390	429.277	N/A	429.277	49.1857	15011.08	56.595
391	459.3447	N/A	459.3447	56.9093	26427.145	493.555
392	451.3192	N/A	451.3192	47.8368	17897.775	149.8
393	352.2495	N/A	352.2495	15.3908	15219.8255	130.738
394	351.2141	N/A	351.2141	18.1769	11245.635	1977.75
395	395.0767	N/A	395.0767	16.5333	9347.49	16.748
396	792.6009	N/A	792.6009	9.8992	9357.2655	7.788
397	354.1338	N/A	354.1338	14.4033	9345.4205	80.514
398	351.2142	N/A	351.2142	22.7233	46626.29	982.53
399	317.1744	N/A	317.1744	32.8492	14654.355	109.23
400	381.2231	N/A	381.2231	23.9481	16253.765	368.04
401	463.3199	N/A	463.3199	51.8571	13579.19	168.165
402	332.1465	N/A	332.1465	14.4362	7566.685	148.743
403	462.3174	N/A	462.3174	35.1437	48659.36	85.8
404	741.3484	N/A	741.3484	27.0853	29525.955	115.61
405	347.2191	N/A	347.2191	33.9501	23388.935	707.535
406	434.3201	N/A	434.3201	42.8895	26656.715	271.915
407	689.2946	N/A	689.2946	26.0937	13929.615	96.36
408	341.2657	N/A	341.2657	44.7139	38501.26	1564
409	324.1799	N/A	324.1799	19.2601	10632.955	103.995
410	377.2323	N/A	377.2323	22.9616	12976.84	346.185
411	451.3277	N/A	451.3277	55.228	23588.26	130.56
412	462.3156	N/A	462.3156	35.3514	1062.655	85.8

413	462.2623	N/A	462.2623	45.9002	15860.64	56.34
414	337.2331	N/A	337.2331	59.1004	34814.975	172.295
415	463.3201	N/A	463.3201	47.7336	13559.29	305.53
416	647.4812	N/A	647.4812	58.9166	24004.215	97.08
417	675.3132	N/A	675.3132	45.8899	21321.22	141.365
418	334.2354	N/A	334.2354	21.5058	9501.82	884.87
419	446.3231	N/A	446.3231	40.2295	20832.085	2213.7
420	537.3394	N/A	537.3394	36.0856	19088.615	105.575
421	691.3039	N/A	691.3039	31.506	32302.145	244.98
422	453.2985	N/A	453.2985	40.6568	13715.625	34.2
423	703.2768	N/A	703.2768	34.1568	11774.95	34.17
424	393.2567	N/A	393.2567	31.1869	14817.945	220.605
425	691.3071	N/A	691.3071	30.3994	12443.81	11917.925
426	402.2625	N/A	402.2625	32.5953	35721.32	227.665
427	677.326	N/A	677.326	51.5127	18687.615	609.73
428	689.3006	N/A	689.3006	26.6438	16399.85	102.075
429	693.322	N/A	693.322	35.1518	43020.12	9830.64
430	333.2031	N/A	333.2031	26.2608	38998.815	372.08
431	414.2964	N/A	414.2964	52.8043	27250.125	96.705
432	422.2851	N/A	422.2851	47.1729	13523.655	138.335
433	669.253	N/A	669.253	20.7736	6929.75	28.085
434	449.3071	N/A	449.3071	49.4268	33444.8	336.34
435	375.2169	N/A	375.2169	21.5242	19305.925	243.175
436	339.2812	N/A	339.2812	9.3991	6352.143	31.005
437	609.2688	N/A	609.2688	30.1066	13910.64	80.16
438	432.3067	N/A	432.3067	42.9258	23717.75	73969.515
439	349.2116	N/A	349.2116	47.0057	7019.215	419.865
440	350.2349	N/A	350.2349	25.6902	16769.72	999.65
441	409.2587	N/A	409.2587	29.2226	11595.625	79.9
442	711.3359	N/A	711.3359	25.0422	7889.59	216.655
443	364.2824	N/A	364.2824	46.8224	13890.43	65.145
444	477.3602	N/A	477.3602	58.8718	9874.42	263.37
445	689.2962	N/A	689.2962	30.9456	8800.705	92.025
446	317.2067	N/A	317.2067	59.2004	49460.36	262.75
447	337.2377	N/A	337.2377	26.9805	1478.85	161857.495
448	631.2531	N/A	631.2531	27.1092	11435.845	42586.075
449	351.2482	N/A	351.2482	36.3083	756.05	236961.02
450	432.2733	N/A	432.2733	21.5704	8814.47	94.525
451	677.326	N/A	677.326	43.9526	8601.12	212220.77
452	447.3447	N/A	447.3447	57.9266	15450.33	290.88
453	353.2274	N/A	353.2274	60.0061	28578.45	107.415
454	425.1793	N/A	425.1793	20.0379	29.725	2690165.2
455	527.2242	N/A	527.2242	12.6554	6.048	1969619.919
456	402.2966	N/A	402.2966	46.7217	69.715	2126442.695

457	631.2488	N/A	631.2488	24.057	43.55	2199739.265
458	527.2263	N/A	527.2263	16.2736	96.2845	1256484.352
459	565.2002	N/A	565.2002	26.5877	60.11	1685055.475
460	563.1849	N/A	563.1849	25.921	60.69	1210696.485
461	527.2218	N/A	527.2218	11.5583	18.2015	929760.3745
462	400.2821	N/A	400.2821	42.7636	973.205	1135570.945
463	409.0919	N/A	409.0919	17.8743	11.87	1160182.885
464	378.297	N/A	378.297	52.2322	1703.715	1604258.545
465	631.243	N/A	631.243	22.1571	62.715	744613.86
466	353.0674	N/A	353.0674	16.3979	8.141	739147.145
467	631.2502	N/A	631.2502	29.0701	243.33	771992.695
468	467.1914	N/A	467.1914	25.279	55.29	459611.205
469	583.2124	N/A	583.2124	18.7391	35.415	416833.465
470	693.3223	N/A	693.3223	34.5313	1397.09	978052.995
471	627.2701	N/A	627.2701	29.005	97.35	574047.04
472	650.2604	N/A	650.2604	24.7428	44.85	628675.28
473	545.2496	N/A	545.2496	57.2602	50.1	1122073.515
474	695.3333	N/A	695.3333	36.6739	913.095	845257.63
475	645.257	N/A	645.257	57.2679	77.055	1092944.625
476	301.072	N/A	301.072	18.8302	700.66	572931.28
477	645.2873	N/A	645.2873	28.6889	245.89	375348.02
478	388.2793	N/A	388.2793	41.6243	138.665	365512.185
479	677.328	N/A	677.328	36.3154	603522.175	1034237.105
480	479.2408	N/A	479.2408	59.2588	23.75	612106.16
481	631.2468	N/A	631.2468	22.7223	101.965	289769.66
482	583.209	N/A	583.209	15.8703	19.62	348276.8445
483	677.3226	N/A	677.3226	34.1884	168	629673.745
484	551.258	N/A	551.258	59.2588	11.41	546958
485	375.048	N/A	375.048	16.2918	7.21	353600.2135
486	451.2073	N/A	451.2073	56.3627	37.625	512069.855
487	465.2227	N/A	465.2227	56.4533	33.66	484468.825
488	364.2786	N/A	364.2786	45.7807	48.64	319850.695
489	701.4866	N/A	701.4866	5.9275	0	129010.141
490	347.1838	N/A	347.1838	21.3815	350.825	266459.015
491	395.0752	N/A	395.0752	12.3097	7.95	162379.6895
492	341.2651	N/A	341.2651	45.1109	286.6	225747.605
493	814.5678	N/A	814.5678	5.9229	3.762	101738.137
494	329.1761	N/A	329.1761	37.8483	339.235	335360.52
495	313.0724	N/A	313.0724	17.7661	30.425	193002.235
496	351.2497	N/A	351.2497	33.2956	1036.36	179456.985
497	573.243	N/A	573.243	57.2593	36.64	472082.38
498	503.2422	N/A	503.2422	56.5021	17.85	778350.145
499	422.1769	N/A	422.1769	20.1333	13.62	144857.955
500	451.2082	N/A	451.2082	48.2577	26.105	236652.4

501	625.2051	N/A	625.2051	33.2443	107.045	220631.895
502	566.2799	N/A	566.2799	59.1578	10.89	328713.005
503	662.3943	N/A	662.3943	47.6642	267.785	330847.785
504	569.2686	N/A	569.2686	25.9552	118.14	158631.64
505	601.2236	N/A	601.2236	19.0024	73.515	138797.75
506	363.25	N/A	363.25	17.9666	29.72	162112.87
507	650.2649	N/A	650.2649	26.9838	580.41	250085.915
508	627.2155	N/A	627.2155	33.8266	27.225	202268.585
509	565.2382	N/A	565.2382	52.6513	41.005	262353.62
510	533.2475	N/A	533.2475	51.1127	93.71	239481.445
511	609.2644	N/A	609.2644	40.9873	464.265	236711.05
512	507.2667	N/A	507.2667	59.1956	46.29	284991.75
513	477.2201	N/A	477.2201	49.6463	33.625	210171.235
514	465.2247	N/A	465.2247	52.7913	41.925	286437.87
515	453.3494	N/A	453.3494	35.4824	286.5	209702.615
516	591.1985	N/A	591.1985	5.9643	3.12	85006.141
517	460.2193	N/A	460.2193	50.997	27.04	209470.61
518	477.2229	N/A	477.2229	57.2492	13.35	447210.13
519	386.2687	N/A	386.2687	37.1021	937.75	173948.33
520	678.3299	N/A	678.3299	42.8462	13178.66	155619.055
521	525.2094	N/A	525.2094	14.2813	7.557	135257.6615
522	416.2765	N/A	416.2765	33.7523	104.12	168781.065
523	613.2258	N/A	613.2258	20.5222	39.48	105887.335
524	301.0727	N/A	301.0727	15.1406	9.786	140701.47
525	505.2187	N/A	505.2187	51.1347	16.74	184179.37
526	537.2443	N/A	537.2443	50.6686	31.485	195580.345
527	527.2231	N/A	527.2231	24.6914	84.865	200948.79
528	593.2701	N/A	593.2701	38.1433	44.73	118305.21
529	351.2506	N/A	351.2506	35.8732	471.155	135121.805
530	420.2275	N/A	420.2275	56.3843	29.48	328361.285
531	507.269	N/A	507.269	56.4545	15.62	243305.39
532	569.198	N/A	569.198	17.7724	16.445	143850.175
533	597.1923	N/A	597.1923	12.5389	9.8445	117635.1865
534	479.239	N/A	479.239	50.5123	23.895	190479.22
535	545.2376	N/A	545.2376	13.8677	100.304	80232.3595
536	581.1968	N/A	581.1968	22.254	26.24	112752.16
537	385.1917	N/A	385.1917	20.1038	63.895	104376.415
538	336.1771	N/A	336.1771	47.6858	89.355	235766.065
539	537.2438	N/A	537.2438	56.3987	22.445	226762.98
540	355.0799	N/A	355.0799	17.7768	28.305	100473.005
541	583.2121	N/A	583.2121	19.8742	43.82	105821.105
542	436.2989	N/A	436.2989	52.1938	56.56	156648.22
543	465.2225	N/A	465.2225	48.1365	9.69	146367.715
544	460.302	N/A	460.302	47.0313	109.75	111465.625

545	381.2598	N/A	381.2598	28.6696	189.8	212543.155
546	573.2462	N/A	573.2462	24.0645	20.625	96615.535
547	486.2299	N/A	486.2299	57.0767	6.93	252447.25
548	625.2598	N/A	625.2598	48.2302	21.45	140227.895
549	321.1663	N/A	321.1663	6.1351	6.448	68068.4575
550	609.263	N/A	609.263	49.5723	26.18	155393.515
551	339.2123	N/A	339.2123	22.499	60.345	206851.865
552	676.3119	N/A	676.3119	33.6503	51.51	276634.2
553	676.3101	N/A	676.3101	32.1518	70.315	196643.49
554	422.2447	N/A	422.2447	56.2928	43.925	449355.64
555	333.1614	N/A	333.1614	14.2938	72.115	116512.2805
556	552.2627	N/A	552.2627	56.3981	22.145	203233.775
557	503.1646	N/A	503.1646	25.9078	74.8	106083.03
558	667.3039	N/A	667.3039	30.5986	44.88	120483.935
559	427.1935	N/A	427.1935	20.044	98.95	107607.64
560	447.1598	N/A	447.1598	15.9921	13.306	102032.8975
561	583.2104	N/A	583.2104	23.1742	43.59	102443.765
562	707.2985	N/A	707.2985	35.9718	76.715	88240.025
563	599.2055	N/A	599.2055	11.3039	5.8645	105723.121
564	591.2505	N/A	591.2505	35.3459	57.005	78043.485
565	405.1851	N/A	405.1851	12.7215	18.557	123331.219
566	477.2201	N/A	477.2201	47.6936	11.625	116686.535
567	609.2617	N/A	609.2617	47.7855	12.035	116753.025
568	337.1978	N/A	337.1978	20.3796	115.02	142511.875
569	325.1987	N/A	325.1987	15.3924	28.105	69339.3975
570	405.1858	N/A	405.1858	11.5872	31.5375	84479.478
571	625.2552	N/A	625.2552	27.0278	86.34	132380.575
572	537.2405	N/A	537.2405	59.1881	21.025	151346.135
573	353.2645	N/A	353.2645	40.2043	1065.185	112732.76
574	559.1736	N/A	559.1736	6.3651	2.13	51520.9675
575	325.2358	N/A	325.2358	23.6167	48.425	149197.46
576	367.2458	N/A	367.2458	31.4418	2262.23	124779.9
577	588.4075	N/A	588.4075	32.8227	43.89	146139.955
578	631.2501	N/A	631.2501	36.4379	525.575	78312.415
579	323.0559	N/A	323.0559	16.9795	15.64	62127.53
580	706.1721	N/A	706.1721	59.6348	12.81	141459.305
581	713.237	N/A	713.237	26.8823	72.85	92237.73
582	573.2988	N/A	573.2988	36.6811	678.88	130288.795
583	369.1918	N/A	369.1918	17.2507	42.72	98915.75
584	303.1162	N/A	303.1162	17.3886	72.835	84211.795
585	677.3254	N/A	677.3254	47.5889	1665.145	149778.07
586	383.1495	N/A	383.1495	10.133	5.29	58186.8815
587	593.2715	N/A	593.2715	50.9382	24.78	114467.7
588	693.3225	N/A	693.3225	38.0335	704.03	121745.765

589	493.2483	N/A	493.2483	50.6058	59.225	132717.85
590	493.2533	N/A	493.2533	48.0424	35.64	98714.54
591	345.201	N/A	345.201	27.7633	181.495	131209.6
592	447.2151	N/A	447.2151	50.9233	65.75	107514.95
593	331.1883	N/A	331.1883	15.9333	50.6345	89247.7265
594	345.203	N/A	345.203	23.5086	57.86	90666.43
595	567.2525	N/A	567.2525	35.1608	53.72	59488.44
596	381.2589	N/A	381.2589	29.4891	81.435	153073.91
597	509.2151	N/A	509.2151	22.1206	62.62	74218.775
598	458.2428	N/A	458.2428	57.2679	45.21	177951.3
599	391.2419	N/A	391.2419	31.3242	245.635	133530.885
600	309.0038	N/A	309.0038	14.9166	5.8575	109420.638
601	411.1818	N/A	411.1818	23.3607	97.255	82793.445
602	459.2141	N/A	459.2141	57.0882	15.015	182556.76
603	315.0872	N/A	315.0872	23.1719	153.65	74237.915
604	461.1762	N/A	461.1762	18.6698	21.335	61205.755
605	689.2897	N/A	689.2897	34.8047	469.045	73164.42
606	713.2382	N/A	713.2382	23.5571	12	74118.82
607	411.1736	N/A	411.1736	35.2458	76.68	152026.32
608	451.2136	N/A	451.2136	24.0874	81.5	62152.295
609	472.2205	N/A	472.2205	57.0944	8.96	156462.165
610	659.2403	N/A	659.2403	47.1114	44.22	67078.635
611	411.1777	N/A	411.1777	37.903	67.22	136228.08
612	406.0833	N/A	406.0833	17.8951	9.57	55116.235
613	311.1614	N/A	311.1614	12.62	21.469	58161.71
614	575.2051	N/A	575.2051	6.069	3.996	50225.5305
615	351.1548	N/A	351.1548	35.0998	84.415	152082.595
616	567.1809	N/A	567.1809	13.4657	18.4275	44999.9995
617	316.2861	N/A	316.2861	20.0907	9.24	42779.22
618	709.3164	N/A	709.3164	39.4471	107.305	56021.405
619	485.3516	N/A	485.3516	53.5259	57.75	224728.5
620	509.1783	N/A	509.1783	16.0998	19.018	65649.6415
621	676.4103	N/A	676.4103	52.23	16818.925	170158.01
622	806.3886	N/A	806.3886	44.7535	6.8	52054.735
623	420.2277	N/A	420.2277	48.1597	49.42	89621.52
624	649.2946	N/A	649.2946	29.4944	55.04	66930.73
625	629.2323	N/A	629.2323	31.3529	277.625	67811.51
626	337.2316	N/A	337.2316	26.0098	156.09	77331.685
627	503.2381	N/A	503.2381	49.4509	36.2	84993.645
628	517.2518	N/A	517.2518	57.2333	23.47	156836.98
629	587.281	N/A	587.281	25.288	56.345	59279
630	552.2614	N/A	552.2614	50.6293	38.96	96359.405
631	776.3336	N/A	776.3336	12.6709	3.0375	33191.2125
632	615.2021	N/A	615.2021	15.2851	8.343	42201.8785

633	447.2152	N/A	447.2152	57.8842	32.98	116349.785
634	503.2406	N/A	503.2406	52.7825	33.46	97732.335
635	569.2282	N/A	569.2282	17.4851	13.74	36587.76
636	377.2642	N/A	377.2642	39.0392	352.11	65185.03
637	444.306	N/A	444.306	36.8406	156.065	126521.3
638	379.0806	N/A	379.0806	18.2198	33.48	54623.78
639	418.2887	N/A	418.2887	32.2169	158.985	146339.25
640	313.0698	N/A	313.0698	12.3547	22.5145	43665.47
641	444.3075	N/A	444.3075	42.491	410441.665	67865.51
642	571.2828	N/A	571.2828	34.4575	992.52	86264.265
643	527.2257	N/A	527.2257	27.0078	344.42	96551.215
644	509.214	N/A	509.214	24.0579	26.22	160873.225
645	550.2473	N/A	550.2473	49.4224	19.785	79797.555
646	551.1879	N/A	551.1879	23.9609	40.02	50548.665
647	489.2226	N/A	489.2226	49.5723	25.84	77214.29
648	309.2065	N/A	309.2065	17.8497	70.26	51979.295
649	927.6486	N/A	927.6486	6.093	2.532	19753.258
650	549.3104	N/A	549.3104	47.6577	160.56	111502.26
651	351.1552	N/A	351.1552	37.7953	112.455	156437.42
652	493.1796	N/A	493.1796	24.62	41.925	57294.28
653	379.2424	N/A	379.2424	26.7263	597.925	194755.83
654	301.1034	N/A	301.1034	11.6856	67.515	55880.947
655	458.287	N/A	458.287	43.4393	201.18	47214.41
656	405.1503	N/A	405.1503	9.2306	8.659	36560.267
657	338.0413	N/A	338.0413	16.3032	11.675	61041.77
658	397.1237	N/A	397.1237	10.0373	14.534	80175.891
659	645.2285	N/A	645.2285	26.4453	30.3	52080.28
660	646.2502	N/A	646.2502	24.8759	48.28	56472.825
661	381.1337	N/A	381.1337	13.1482	15.3715	44534.859
662	499.2076	N/A	499.2076	57.2679	32.085	148048.42
663	389.1906	N/A	389.1906	34.8869	409.085	63109.66
664	523.2289	N/A	523.2289	48.0902	19.72	69749.69
665	619.1965	N/A	619.1965	5.9254	2.19	26586.5825
666	441.1529	N/A	441.1529	11.736	8.619	23612.2685
667	645.227	N/A	645.227	30.3273	36.52	48607.745
668	381.1314	N/A	381.1314	25.907	121.98	54904.105
669	613.2231	N/A	613.2231	15.7665	32.864	71054.875
670	551.1903	N/A	551.1903	21.4778	40.31	53569.66
671	335.1854	N/A	335.1854	21.1453	59.8	35881.635
672	353.2296	N/A	353.2296	31.3585	323.88	67141.855
673	331.1799	N/A	331.1799	19.5207	143.565	57272.205
674	503.2384	N/A	503.2384	48.0748	18.87	121686.59
675	623.2797	N/A	623.2797	57.1968	7.8	126278.1
676	329.1747	N/A	329.1747	41.8979	220.7	49190.065

677	444.2274	N/A	444.2274	57.2	13.65	117867.98
678	583.2116	N/A	583.2116	21.2228	70.64	59979.55
679	403.1716	N/A	403.1716	10.3654	5.978	43923.8365
680	446.2833	N/A	446.2833	47.138	262.38	45038.94
681	358.1991	N/A	358.1991	19.2319	49.145	50432.715
682	713.2367	N/A	713.2367	24.332	30.36	41478.055
683	311.2146	N/A	311.2146	15.8452	40.548	51563.3135
684	367.1772	N/A	367.1772	15.9202	28.0555	95564.422
685	307.0597	N/A	307.0597	22.5887	34.21	40968.525
686	675.3121	N/A	675.3121	31.1714	1417.38	43843.6
687	405.1889	N/A	405.1889	16.4486	63.9255	49238.722
688	349.1993	N/A	349.1993	30.3467	377.44	40217.015
689	693.3222	N/A	693.3222	33.2303	329.105	70810.525
690	521.2478	N/A	521.2478	52.6917	37.4	92327.005
691	437.1965	N/A	437.1965	26.1296	143.285	49888.59
692	507.1955	N/A	507.1955	28.2111	231.195	40477.35
693	464.3326	N/A	464.3326	34.0842	136.84	61703.96
694	691.3055	N/A	691.3055	23.2827	58.58	49551.61
695	541.2007	N/A	541.2007	10.254	9.3015	32282.393
696	314.0785	N/A	314.0785	16.2876	7.95	30672.01
697	351.1867	N/A	351.1867	23.6332	94.05	51634.94
698	577.203	N/A	577.203	28.4446	57.72	27029.36
699	485.1773	N/A	485.1773	19.0725	33	38960.795
700	478.293	N/A	478.293	40.3806	143.515	53196.9
701	329.1674	N/A	329.1674	12.6571	25.8475	36386.253
702	491.2378	N/A	491.2378	59.3093	21.45	95384.915
703	407.1681	N/A	407.1681	25.4902	177.455	37818.165
704	538.2515	N/A	538.2515	48.0822	31.605	55330.035
705	478.2899	N/A	478.2899	35.8896	109.485	99736.195
706	727.0995	N/A	727.0995	16.2241	3.744	44686.8355
707	369.1923	N/A	369.1923	18.4114	183.55	70908.53
708	643.216	N/A	643.216	32.6709	224.62	39567.52
709	461.1916	N/A	461.1916	49.407	26.53	53878.865
710	446.3248	N/A	446.3248	40.0805	427.405	100884.09
711	525.2083	N/A	525.2083	17.4717	13.045	37977.535
712	561.243	N/A	561.243	59.2159	6.82	70311.555
713	639.2747	N/A	639.2747	56.3294	15.3	73945.525
714	531.2349	N/A	531.2349	49.6449	41.4	58085.26
715	462.3191	N/A	462.3191	30.5654	369.29	47979.54
716	551.1889	N/A	551.1889	16.1969	7.5	36001.235
717	525.2066	N/A	525.2066	15.4996	9.742	35528.6805
718	583.2129	N/A	583.2129	24.4537	68.51	43222.67
719	464.3286	N/A	464.3286	32.8511	121.495	39865.19
720	591.2546	N/A	591.2546	24.0858	41.54	31867.725

721	361.2358	N/A	361.2358	20.9212	219.08	66369.49
722	613.2212	N/A	613.2212	20.9948	19.905	53154.285
723	353.2003	N/A	353.2003	27.0148	453.64	34446.59
724	555.2922	N/A	555.2922	36.3503	25967.625	83539.825
725	643.2139	N/A	643.2139	29.4511	86.175	40424.52
726	695.3335	N/A	695.3335	40.4936	94.675	36090.845
727	501.3506	N/A	501.3506	57.6866	1066.96	113354.92
728	525.2078	N/A	525.2078	21.3536	117.295	49389.53
729	480.3067	N/A	480.3067	39.0926	332.055	76003.81
730	521.2456	N/A	521.2456	49.4261	15.835	54221.285
731	477.1692	N/A	477.1692	6.3403	3.7975	17532.5145
732	609.264	N/A	609.264	31.0562	228.535	44062.425
733	569.1968	N/A	569.1968	12.1297	3.959	38723.4565
734	471.1981	N/A	471.1981	23.755	59.845	44300.93
735	416.2769	N/A	416.2769	29.1711	103.41	114845.795
736	509.212	N/A	509.212	15.4085	13.963	24869.3155
737	709.3187	N/A	709.3187	22.1573	412.61	96375.935
738	351.1838	N/A	351.1838	23.1811	46.605	32541.92
739	675.2747	N/A	675.2747	26.9043	186.74	31709.835
740	553.2027	N/A	553.2027	18.3164	35.845	35756.61
741	583.2069	N/A	583.2069	22.3678	50.19	46171.5
742	489.2185	N/A	489.2185	47.7189	32.16	56981.93
743	521.2468	N/A	521.2468	48.1008	14.8	86582.03
744	421.237	N/A	421.237	49.4269	45.99	63484.505
745	459.1593	N/A	459.1593	29.0327	45.65	53363.79
746	455.2617	N/A	455.2617	27.6729	54.165	70819.945
747	806.5089	N/A	806.5089	31.322	45.67	30544.085
748	547.1897	N/A	547.1897	26.5318	26.455	53188.475
749	349.1993	N/A	349.1993	19.4184	207.48	87304.005
750	550.2469	N/A	550.2469	47.7898	20.475	49711.715
751	389.1944	N/A	389.1944	37.9898	61.15	55858.015
752	663.2401	N/A	663.2401	26.8163	158.87	49382.105
753	387.181	N/A	387.181	26.1842	204.335	33288.57
754	483.1906	N/A	483.1906	19.9264	10.35	55185.21
755	363.249	N/A	363.249	29.24	171.6	41309.03
756	333.2004	N/A	333.2004	19.204	82.99	110361.595
757	495.3609	N/A	495.3609	44.5511	89.235	31921.13
758	391.2464	N/A	391.2464	32.2697	173.95	48973.08
759	597.2268	N/A	597.2268	27.3426	44.89	29353.555
760	775.3089	N/A	775.3089	29.7757	36.07	33362.455
761	311.0835	N/A	311.0835	10.5704	16.968	27521.967
762	515.2395	N/A	515.2395	49.6104	22.425	46324.285
763	337.2323	N/A	337.2323	24.2634	56.79	44444.905
764	645.226	N/A	645.226	32.5853	308.135	35253.375

765	737.4484	N/A	737.4484	28.1906	45.075	36412.31
766	564.2633	N/A	564.2633	57.2042	20.295	104922.375
767	611.2774	N/A	611.2774	26.6581	70.855	24303.88
768	533.2457	N/A	533.2457	59.2438	11.88	61666.19
769	449.1788	N/A	449.1788	6.3833	3.135	14668.9865
770	462.3208	N/A	462.3208	29.7873	254.09	36510.365
771	430.2928	N/A	430.2928	37.4851	9997.02	94288.285
772	559.2249	N/A	559.2249	49.406	7.79	44315.195
773	334.3087	N/A	334.3087	45.8323	54.14	92422.08
774	363.2478	N/A	363.2478	15.0205	26.8065	28234.457
775	367.2104	N/A	367.2104	12.6061	156.456	36180.895
776	579.2169	N/A	579.2169	29.3275	43.32	27169.895
777	305.2061	N/A	305.2061	19.0331	30.815	38812.1
778	581.1951	N/A	581.1951	16.8562	41.415	22974.039
779	577.2719	N/A	577.2719	35.1768	128.475	59629.565
780	585.2624	N/A	585.2624	22.1107	43.73	32101.305
781	591.2032	N/A	591.2032	4.829	2.691	55708.385
782	359.2171	N/A	359.2171	27.0271	167.475	30511.97
783	480.245	N/A	480.245	49.1935	27.39	47718.44
784	327.1852	N/A	327.1852	15.8909	82.296	39303.1305
785	695.2239	N/A	695.2239	29.0517	36.025	29673.385
786	519.2662	N/A	519.2662	52.3612	48.37	64198.5
787	566.2813	N/A	566.2813	57.9231	8.8	57525.39
788	524.2149	N/A	524.2149	12.6737	5.5125	26582.0975
789	339.2449	N/A	339.2449	30.3892	267.57	34564.305
790	523.2279	N/A	523.2279	50.5883	13.325	52086.545
791	351.2477	N/A	351.2477	28.4603	84.18	27420.275
792	363.0232	N/A	363.0232	5.0063	4.633	102706.523
793	496.3024	N/A	496.3024	29.6737	87.775	31550.03
794	351.1525	N/A	351.1525	11.9662	53.918	53062.317
795	383.1485	N/A	383.1485	26.5661	108.36	49254.25
796	521.2483	N/A	521.2483	56.8955	21.105	108313.78
797	524.2201	N/A	524.2201	24.8632	29.61	36533.815
798	332.2201	N/A	332.2201	29.6551	172.89	32470.265
799	431.1815	N/A	431.1815	51.0972	26.615	47557.87
800	505.1836	N/A	505.1836	26.6368	193.065	44622.045
801	675.3129	N/A	675.3129	42.5293	294.925	28465.72
802	419.1128	N/A	419.1128	22.5372	32.11	32394.065
803	441.2419	N/A	441.2419	19.8481	31.055	37235.715
804	351.211	N/A	351.211	12.6688	11.4805	82481.5525
805	533.2136	N/A	533.2136	23.4386	23.735	33750.025
806	675.3128	N/A	675.3128	35.9006	1743.94	38646.785
807	492.2099	N/A	492.2099	56.3667	19.2	30030.595
808	479.1866	N/A	479.1866	19.2085	29.625	25006.825

809	565.2367	N/A	565.2367	53.5771	17.11	49864.815
810	655.3424	N/A	655.3424	42.7816	596.595	35612.3
811	675.3095	N/A	675.3095	45.57	259.58	55991.84
812	706.1672	N/A	706.1672	58.4522	6.27	52302.02
813	404.3113	N/A	404.3113	52.9709	1522.34	69862.38
814	561.2413	N/A	561.2413	56.4156	10	55584.29
815	523.2298	N/A	523.2298	56.2503	20.15	61035.335
816	496.3024	N/A	496.3024	30.314	476.725	31562.31
817	416.2778	N/A	416.2778	35.375	380.425	62671.345
818	323.2161	N/A	323.2161	26.0778	99.57	49137.83
819	641.2859	N/A	641.2859	31.4135	95.7	32300.555
820	413.1565	N/A	413.1565	18.4546	48.425	26083.155
821	543.2226	N/A	543.2226	26.5292	44.48	41296.53
822	403.1356	N/A	403.1356	7.9516	5.175	20267.4015
823	625.3142	N/A	625.3142	32.2643	50.82	25946.84
824	498.3154	N/A	498.3154	33.3999	115.685	37722.805
825	392.3106	N/A	392.3106	54.6579	721.32	79690.415
826	434.3502	N/A	434.3502	58.0198	29.8	107434.66
827	435.2493	N/A	435.2493	57.8401	23.8	93836.63
828	422.2845	N/A	422.2845	52.4507	319.08	43266.29
829	707.2954	N/A	707.2954	36.6831	24.905	28776.93
830	675.2667	N/A	675.2667	59.1642	7.665	48603.03
831	461.177	N/A	461.177	15.8845	30.56	24854.247
832	387.1759	N/A	387.1759	11.6252	15.719	34089.6395
833	433.2354	N/A	433.2354	51.0678	55.62	48746.805
834	627.2716	N/A	627.2716	28.4387	55.275	21889.95
835	323.0217	N/A	323.0217	22.566	34.05	42653.41
836	513.2192	N/A	513.2192	57.2694	7.84	75298.71
837	599.2058	N/A	599.2058	18.7735	28.635	63418.28
838	331.0814	N/A	331.0814	16.341	8.444	16847.307
839	357.1976	N/A	357.1976	23.1842	76.225	67999.97
840	593.2336	N/A	593.2336	32.2907	52.26	19192.96
841	423.2004	N/A	423.2004	13.8689	29.138	12001.476
842	444.2662	N/A	444.2662	43.474	43.885	26870.52
843	657.2488	N/A	657.2488	15.041	9.291	20153.418
844	351.1572	N/A	351.1572	41.9412	108.3	29782.27
845	411.1768	N/A	411.1768	41.9024	31.525	27066.355
846	461.1955	N/A	461.1955	56.7671	33.425	11877.235
847	631.2418	N/A	631.2418	49.4393	16.755	41787.865
848	391.2082	N/A	391.2082	28.3953	245.8	24155.95
849	659.21	N/A	659.21	19.1427	28.075	23714.1
850	498.3166	N/A	498.3166	32.4613	110.92	27698.045
851	485.3547	N/A	485.3547	50.3195	35.56	87740.24
852	581.1999	N/A	581.1999	14.9183	6.656	27277.8405

853	475.2053	N/A	475.2053	59.0838	13.23	36479.22
854	477.1711	N/A	477.1711	28.6452	63.415	28300.6
855	379.2455	N/A	379.2455	29.7288	485.38	68677.705
856	465.2241	N/A	465.2241	49.2101	47.14	43543.18
857	709.4168	N/A	709.4168	23.2972	25.52	20908.795
858	461.1936	N/A	461.1936	47.5743	56.785	26702.05
859	687.2755	N/A	687.2755	32.6923	63.57	28930.585
860	547.1912	N/A	547.1912	27.2088	48.75	22144.76
861	579.2497	N/A	579.2497	56.4312	9.68	44688.385
862	579.2896	N/A	579.2896	38.4488	138.765	83001.635
863	475.2388	N/A	475.2388	56.2939	61.39	39334.795
864	430.2106	N/A	430.2106	57.2308	24.18	65623.11
865	412.2822	N/A	412.2822	46.942	142.605	31962.955
866	649.2896	N/A	649.2896	28.0792	118.235	23013.275
867	553.2742	N/A	553.2742	41.1463	60.855	27362.925
868	711.3341	N/A	711.3341	25.4574	276.205	24130.77
869	537.2422	N/A	537.2422	49.1802	34.32	33534.36
870	463.3463	N/A	463.3463	54.1297	453.245	91897.84
871	365.1975	N/A	365.1975	14.7681	38.464	25927.0405
872	659.2956	N/A	659.2956	31.6788	103.51	27514.2
873	349.2297	N/A	349.2297	25.7464	128.075	60243.765
874	553.2753	N/A	553.2753	33.7705	89.475	44788.325
875	329.1755	N/A	329.1755	32.0459	835.98	46385.14
876	460.2218	N/A	460.2218	49.4652	44.56	35397.18
877	385.2909	N/A	385.2909	44.7866	160.225	34380.3
878	401.1534	N/A	401.1534	18.7097	23.79	41008.345
879	597.3016	N/A	597.3016	41.641	57.71	21373.34
880	336.1776	N/A	336.1776	52.2244	6552.73	71680.55
881	653.3254	N/A	653.3254	41.1343	90.795	29157.4
882	567.2509	N/A	567.2509	47.808	21.485	33924.085
883	347.1816	N/A	347.1816	15.3825	17.9875	35951.8675
884	369.1947	N/A	369.1947	19.5986	930.65	41977.97
885	509.2114	N/A	509.2114	16.2994	28.2905	30783.561
886	402.2617	N/A	402.2617	36.9363	2461.32	27745.86
887	637.2943	N/A	637.2943	52.3453	7.98	42365.995
888	545.2018	N/A	545.2018	24.3448	70.65	17628.32
889	349.2	N/A	349.2	25.8027	395.75	26917.685
890	565.2396	N/A	565.2396	48.0517	18.63	25548.38
891	493.2505	N/A	493.2505	49.3376	50.745	39205.595
892	331.1867	N/A	331.1867	18.2793	300.03	75019.175
893	375.2133	N/A	375.2133	19.5918	883.21	57388.695
894	341.1627	N/A	341.1627	15.4176	13.335	23745.5615
895	537.2437	N/A	537.2437	52.6521	41.625	36377.92
896	427.2489	N/A	427.2489	31.5218	164.835	24378.545

897	337.1988	N/A	337.1988	21.011	28.21	25621.235
898	311.1598	N/A	311.1598	11.5156	42.725	21016.813
899	402.2607	N/A	402.2607	34.8874	255.75	29728.895
900	451.2127	N/A	451.2127	31.9808	219.61	28769.14
901	628.2445	N/A	628.2445	24.1228	19.89	25403.73
902	423.1073	N/A	423.1073	21.2498	31.36	20267.075
903	395.1463	N/A	395.1463	16.549	49.9185	12695.3315
904	631.2493	N/A	631.2493	23.6427	48.65	29063.165
905	559.2278	N/A	559.2278	47.7672	23.06	46092.985
906	697.3711	N/A	697.3711	35.3257	87.12	26557.225
907	527.2247	N/A	527.2247	23.8832	193.965	22543.715
908	492.2413	N/A	492.2413	56.1151	21.78	22374.64
909	465.225	N/A	465.225	50.6653	20.28	42179.765
910	691.3033	N/A	691.3033	19.6974	13.26	22912.59
911	447.2837	N/A	447.2837	41.0628	379.875	27209.78
912	521.1766	N/A	521.1766	19.6509	118.925	14745.975
913	595.281	N/A	595.281	36.8745	2192.37	18416.4
914	525.2034	N/A	525.2034	19.0874	22.53	30097.98
915	631.3901	N/A	631.3901	52.7858	32.635	11210.905
916	449.2317	N/A	449.2317	56.9428	17.7	43331.96
917	377.1939	N/A	377.1939	19.9388	46.6	22875.56
918	555.2911	N/A	555.2911	34.1365	79.95	35891.1
919	624.2674	N/A	624.2674	29.1511	30.26	17260.11
920	316.2231	N/A	316.2231	31.6429	119.165	23349.12
921	555.2908	N/A	555.2908	47.5798	161.91	52784.78
922	345.0345	N/A	345.0345	16.9843	11.89	13793.365
923	509.2154	N/A	509.2154	22.7155	96.245	26223.455
924	541.2005	N/A	541.2005	19.0686	72.035	18613.71
925	515.2592	N/A	515.2592	27.5568	131.64	12678.555
926	647.2444	N/A	647.2444	19.7542	205.145	19828.46
927	355.141	N/A	355.141	14.3143	55.496	25383.692
928	408.271	N/A	408.271	46.0774	215.78	23700.07
929	397.2514	N/A	397.2514	34.8666	119.755	29447.475
930	565.2706	N/A	565.2706	49.3592	11.55	29552.79
931	432.3075	N/A	432.3075	41.7033	1278.165	40377.785
932	509.2153	N/A	509.2153	37.1668	405.045	29141.41
933	501.2803	N/A	501.2803	35.1564	231.735	23271.2
934	381.2216	N/A	381.2216	12.899	20.5405	48169.9465
935	553.276	N/A	553.276	32.1896	177.265	20522.925
936	449.2586	N/A	449.2586	47.6547	84.7	15894.795
937	649.4012	N/A	649.4012	42.1287	280.14	23200.435
938	333.1307	N/A	333.1307	12.813	25.403	18073.5935
939	353.2245	N/A	353.2245	14.7409	17.7005	37652.177
940	479.2431	N/A	479.2431	52.9529	168.96	34614.31

941	533.2457	N/A	533.2457	53.3352	50.555	36079.055
942	425.1584	N/A	425.1584	19.1174	379.805	19215.025
943	509.2134	N/A	509.2134	23.7172	66.08	30077.72
944	449.3263	N/A	449.3263	48.4022	232.72	33639.175
945	365.1354	N/A	365.1354	38.0633	190.64	21320.345
946	411.037	N/A	411.037	12.3547	5.4145	18291.5425
947	308.0852	N/A	308.0852	24.179	58.075	13733.19
948	436.3032	N/A	436.3032	24.814	81.02	19934.06
949	595.211	N/A	595.211	21.6717	19.885	15696.75
950	413.1732	N/A	413.1732	20.0574	57.1	17872.51
951	531.2346	N/A	531.2346	47.6865	17.4	27028.475
952	411.1782	N/A	411.1782	22.5287	69.385	30416.395
953	693.3211	N/A	693.3211	42.304	91.735	21835.275
954	655.3415	N/A	655.3415	33.0446	109.115	28785.545
955	549.2394	N/A	549.2394	51.2611	42.41	31082.92
956	502.2292	N/A	502.2292	59.2196	13.32	38435.83
957	387.1395	N/A	387.1395	16.0177	24.383	22986.6605
958	415.1341	N/A	415.1341	6.7943	3.825	13637.642
959	461.2198	N/A	461.2198	56.6679	19.545	3687.26
960	449.3227	N/A	449.3227	51.433	204.065	31032.715
961	309.0701	N/A	309.0701	7.3778	5.964	17309.1195
962	513.1722	N/A	513.1722	12.8281	4.992	16191.356
963	349.1404	N/A	349.1404	11.0028	14.1605	15955.0245
964	447.2843	N/A	447.2843	39.2358	251.05	20595.87
965	353.1675	N/A	353.1675	19.4853	84	28733.68
966	509.2114	N/A	509.2114	11.536	8.69	19805.7125
967	345.204	N/A	345.204	28.4746	138.93	23535.395
968	645.2298	N/A	645.2298	27.9253	208.965	19601.385
969	565.2032	N/A	565.2032	18.8893	98.83	18478.04
970	555.2899	N/A	555.2899	35.5652	127.08	24890.115
971	639.2716	N/A	639.2716	52.617	21.255	28644.155
972	681.213	N/A	681.213	25.0104	55.62	18205.255
973	631.2414	N/A	631.2414	47.7945	14.535	21712.605
974	397.2353	N/A	397.2353	30.4654	80.1	16486.125
975	588.4055	N/A	588.4055	5.8559	3.762	11706.1385
976	571.2857	N/A	571.2857	25.0132	141.165	18822.415
977	487.2626	N/A	487.2626	27.3206	113.255	21472.765
978	631.3895	N/A	631.3895	52.5403	64.945	7196.145
979	419.1674	N/A	419.1674	12.3577	25.851	18286.2635
980	555.2917	N/A	555.2917	42.896	444.94	28616.965
981	331.0833	N/A	331.0833	14.62	22.929	14605.2475
982	336.2188	N/A	336.2188	23.1811	228.67	39209.415
983	701.4862	N/A	701.4862	4.6666	3.4155	26901.448
984	495.3569	N/A	495.3569	42.9254	160.55	18755.31

985	523.1886	N/A	523.1886	18.8104	31.595	29015.535
986	519.2343	N/A	519.2343	50.9596	29.9	43789.905
987	509.176	N/A	509.176	23.9976	137.85	4938.815
988	677.3249	N/A	677.3249	51.7102	278.085	35016.785
989	553.2724	N/A	553.2724	39.5739	61.335	28656.8
990	353.1713	N/A	353.1713	37.9204	86.64	29837.64
991	555.2106	N/A	555.2106	22.3938	29.14	16280.375
992	419.1673	N/A	419.1673	19.1622	30.36	13088.17
993	423.2437	N/A	423.2437	57.0914	64.96	88801.145
994	432.3073	N/A	432.3073	41.0999	898.075	15237.98
995	356.3082	N/A	356.3082	52.0169	40.62	37109.59
996	432.2703	N/A	432.2703	42.3291	103.68	17037.925
997	407.2172	N/A	407.2172	49.4698	75.075	27600.845
998	361.1974	N/A	361.1974	22.3803	94.6	35320.035
999	433.2006	N/A	433.2006	24.0993	126.98	16407.65
1000	577.2736	N/A	577.2736	35.8375	45.56	20337.32
1001	473.3312	N/A	473.3312	46.1888	117.3	19510.82
1002	369.2551	N/A	369.2551	20.6128	18	16717.58
1003	605.2693	N/A	605.2693	57.0698	23.45	40782.215
1004	539.2935	N/A	539.2935	32.8216	85.07	16490.39
1005	411.1768	N/A	411.1768	36.8155	34.32	15196.99
1006	465.3468	N/A	465.3468	44.9722	33.37	51099.305
1007	581.1959	N/A	581.1959	15.6072	7.739	14801.721
1008	443.162	N/A	443.162	8.6826	4.237	12865.3765
1009	381.2198	N/A	381.2198	11.5426	12.4295	20503.2545
1010	316.2806	N/A	316.2806	19.6133	17.92	11629.815
1011	351.2485	N/A	351.2485	29.229	125.265	20619.915
1012	461.228	N/A	461.228	53.4562	28.14	28523.675
1013	462.2924	N/A	462.2924	47.9202	125.49	14301.63
1014	524.2165	N/A	524.2165	16.3225	10.173	13280.18
1015	539.1835	N/A	539.1835	11.1227	9.4105	10144.7335
1016	607.2432	N/A	607.2432	38.2223	81.245	20721.185
1017	711.2175	N/A	711.2175	26.9844	43.47	16512.095
1018	401.1567	N/A	401.1567	26.0117	117.935	18033.805
1019	335.189	N/A	335.189	17.3827	108.25	15303.695
1020	427.2237	N/A	427.2237	15.5569	27.7285	17016.232
1021	551.2555	N/A	551.2555	57.9573	9.555	29739.31
1022	661.2217	N/A	661.2217	24.1129	54.855	19777.295
1023	433.2362	N/A	433.2362	56.2983	37.87	79237.82
1024	365.0619	N/A	365.0619	12.6774	6.825	14723.0945
1025	615.1972	N/A	615.1972	8.6449	2.06	11769.957
1026	645.2801	N/A	645.2801	23.1028	81.26	11620.82
1027	524.2204	N/A	524.2204	11.4612	6.2935	12266.1595
1028	409.3124	N/A	409.3124	17.8511	13.02	5945.885

1029	509.2152	N/A	509.2152	26.3324	1179.98	19559.13
1030	425.1565	N/A	425.1565	38.2674	71.74	15504.725
1031	448.2973	N/A	448.2973	24.1366	67.29	17226.17
1032	631.251	N/A	631.251	28.3513	8240.91	13380.405
1033	795.1834	N/A	795.1834	17.7498	4.29	13526.215
1034	351.1801	N/A	351.1801	14.8679	19.3265	8198.6
1035	407.168	N/A	407.168	20.0437	53.775	19248.15
1036	500.212	N/A	500.212	49.4509	12.48	22822.915
1037	353.2601	N/A	353.2601	38.1615	668.46	20865.955
1038	647.3857	N/A	647.3857	39.374	70.72	33182.085
1039	441.2417	N/A	441.2417	22.4066	54.225	33366.83
1040	447.2494	N/A	447.2494	59.2168	33.845	16860.065
1041	609.267	N/A	609.267	39.3181	227.34	18426.735
1042	303.1168	N/A	303.1168	15.9912	31.5805	15952.9475
1043	569.2751	N/A	569.2751	42.007	83.84	14519.19
1044	493.2534	N/A	493.2534	57.8726	53.35	27547.07
1045	543.1976	N/A	543.1976	16.3024	27.348	14960.5375
1046	367.2449	N/A	367.2449	29.1058	1156.025	42081.52
1047	675.3078	N/A	675.3078	48.4133	274.46	19159.63
1048	403.1718	N/A	403.1718	20.4743	391.22	14983.6
1049	397.1247	N/A	397.1247	12.0022	9.734	10973.3815
1050	541.2025	N/A	541.2025	25.7464	76.3	18286.6
1051	597.1927	N/A	597.1927	11.9323	3.885	18142.3595
1052	384.1774	N/A	384.1774	44.8477	19.78	14951.495
1053	329.1756	N/A	329.1756	22.5987	103.45	53478.855
1054	661.254	N/A	661.254	56.3458	13.86	24797.945
1055	509.2155	N/A	509.2155	48.1118	40.22	19713.265
1056	397.0983	N/A	397.0983	13.1242	14.3875	12787.94
1057	932.874	N/A	932.874	24.1271	7.56	12445.33
1058	407.2211	N/A	407.2211	48.132	58.995	35618.735
1059	450.3158	N/A	450.3158	31.7736	90.725	21869.5
1060	430.2897	N/A	430.2897	35.6188	672.275	27526.795
1061	547.2288	N/A	547.2288	50.6217	31.75	25474.09
1062	423.2325	N/A	423.2325	24.0331	435.15	17729.685
1063	693.322	N/A	693.322	32.7634	416.835	26934.735
1064	477.1724	N/A	477.1724	15.6357	18.6585	17457.7635
1065	661.2271	N/A	661.2271	18.0438	20.035	11870.325
1066	573.2994	N/A	573.2994	37.385	250.68	14033.19
1067	693.3201	N/A	693.3201	29.1782	148.155	34357.27
1068	493.3263	N/A	493.3263	50.6292	374.455	17314.635
1069	409.2567	N/A	409.2567	23.6548	1995.42	39286.335
1070	471.2717	N/A	471.2717	34.5701	604.23	17423.115
1071	587.2802	N/A	587.2802	29.6979	74.64	16885.845
1072	631.2308	N/A	631.2308	20.1014	29.285	4728.04

1073	577.2755	N/A	577.2755	52.3862	51.9	28089.645
1074	647.2397	N/A	647.2397	17.9098	39.97	7803.5
1075	367.1824	N/A	367.1824	16.7557	115.09	22406.877
1076	585.2653	N/A	585.2653	28.6745	213.565	17520.385
1077	329.1756	N/A	329.1756	11.5882	14.0415	11859.495
1078	425.2852	N/A	425.2852	41.9357	213.045	15108.96
1079	477.2247	N/A	477.2247	51.1349	63.36	35819.185
1080	387.2077	N/A	387.2077	18.1348	136.81	34337.025
1081	691.3047	N/A	691.3047	22.3185	23	75694.775
1082	547.1904	N/A	547.1904	24.2862	11.845	16572.43
1083	567.2547	N/A	567.2547	23.8832	212.31	12143.455
1084	338.1974	N/A	338.1974	17.043	77.87	9905.54
1085	613.2224	N/A	613.2224	16.6136	11.99	10847.808
1086	693.3194	N/A	693.3194	22.5173	44.48	15498.13
1087	361.1862	N/A	361.1862	24.111	126.66	19073.835
1088	689.2027	N/A	689.2027	31.9577	32.34	16551.91
1089	447.25	N/A	447.25	59.2614	33.845	8376.11
1090	527.2208	N/A	527.2208	14.8439	15.8935	11616.791
1091	693.3222	N/A	693.3222	30.3748	375.095	44952.08
1092	425.0602	N/A	425.0602	17.6544	8.7	22006.56
1093	529.2068	N/A	529.2068	30.6653	81.16	5975.93
1094	402.26	N/A	402.26	30.4975	64.365	37255.565
1095	691.308	N/A	691.308	25.9204	1461.145	33917.325
1096	595.282	N/A	595.282	22.7085	42.06	15116.08
1097	613.2386	N/A	613.2386	37.3899	160.61	10508.405
1098	325.163	N/A	325.163	10.9411	57.5035	12072.125
1099	501.3497	N/A	501.3497	53.3506	131.045	27549.72
1100	693.3196	N/A	693.3196	41.9552	197.49	13193.505
1101	879.2731	N/A	879.2731	16.2195	3.12	11792.7875
1102	543.2204	N/A	543.2204	13.923	29.8425	10922.474
1103	420.2277	N/A	420.2277	52.6729	108.3	22862.13
1104	355.081	N/A	355.081	12.1583	7.625	10246.882
1105	461.227	N/A	461.227	56.4627	25.425	30796.08
1106	403.1698	N/A	403.1698	14.1797	27.2045	15662.63
1107	479.2382	N/A	479.2382	48.2616	57.145	19052.665
1108	501.313	N/A	501.313	32.489	64.96	16482.975
1109	591.2175	N/A	591.2175	31.4607	36.96	8544.595
1110	709.3153	N/A	709.3153	28.5023	185.475	15838.49
1111	349.166	N/A	349.166	14.2742	61.919	10254.4115
1112	409.257	N/A	409.257	22.8787	2670.72	49570.64
1113	579.2923	N/A	579.2923	57.9975	27.225	24220.85
1114	323.1303	N/A	323.1303	29.1209	132.95	20214.345
1115	481.3459	N/A	481.3459	37.812	133.555	14180.24
1116	449.2589	N/A	449.2589	56.7073	47.195	621.16

1117	493.255	N/A	493.255	52.7574	52	23596.56
1118	463.1982	N/A	463.1982	12.7095	6.72	13748.6535
1119	448.3032	N/A	448.3032	28.4357	682.085	14572.505
1120	677.3267	N/A	677.3267	38.239	29438.8	14745.745
1121	545.1924	N/A	545.1924	5.9745	3.332	11166.524
1122	693.3145	N/A	693.3145	25.0802	87.99	18846.765
1123	400.2814	N/A	400.2814	46.4228	147.835	21094.58
1124	707.2985	N/A	707.2985	24.5959	70.78	15536.74
1125	448.2949	N/A	448.2949	25.0293	87.42	20462.225
1126	412.2773	N/A	412.2773	31.455	125.56	25441.6
1127	503.1646	N/A	503.1646	33.0979	86.23	16817.775
1128	301.0973	N/A	301.0973	10.6642	6.88	8521.8955
1129	422.2823	N/A	422.2823	46.163	40.93	15149.505
1130	545.2279	N/A	545.2279	12.7195	6.71	7690.2415
1131	369.1013	N/A	369.1013	10.2016	19.458	8757.1075
1132	475.2432	N/A	475.2432	48.2694	29.495	4839.675
1133	814.5689	N/A	814.5689	4.7056	0	16041.393
1134	525.2078	N/A	525.2078	20.5824	44.625	8931.745
1135	389.2272	N/A	389.2272	20.8296	37.305	31510.025
1136	322.2473	N/A	322.2473	5.8971	3.6815	9204.192
1137	487.2382	N/A	487.2382	51.0282	106.505	18834.76
1138	444.2242	N/A	444.2242	49.4569	18.61	15414.255
1139	593.2626	N/A	593.2626	32.9584	202.135	11730.565
1140	420.2249	N/A	420.2249	58.0077	36.18	25461.695
1141	609.2645	N/A	609.2645	24.1207	70.78	9894.135
1142	364.28	N/A	364.28	53.5092	142.57	22081.925
1143	463.3439	N/A	463.3439	50.3243	138.075	21022.415
1144	695.3374	N/A	695.3374	39.6385	253.355	11470.42
1145	391.2122	N/A	391.2122	25.2712	84.96	13097.365
1146	628.2416	N/A	628.2416	22.1802	30.8	9079.135
1147	623.2756	N/A	623.2756	45.4909	8.36	9657.605
1148	409.2548	N/A	409.2548	18.7821	59.645	15805.405
1149	459.1637	N/A	459.1637	16.7249	14.908	8374.62
1150	676.4087	N/A	676.4087	50.7489	106.37	23567.735
1151	707.3017	N/A	707.3017	29.5873	305.045	9790.485
1152	555.2892	N/A	555.2892	43.9771	179.985	16545.09
1153	571.2105	N/A	571.2105	9.491	3.3825	6237.4405
1154	311.1579	N/A	311.1579	19.4642	112.87	21794.65
1155	776.33	N/A	776.33	11.4347	3.808	4458.4395
1156	386.2613	N/A	386.2613	45.6963	167.12	8727.6
1157	615.1991	N/A	615.1991	11.455	13.9425	6986.4195
1158	387.1778	N/A	387.1778	13.3887	56.4585	6884.1065
