

Electronic Supporting Information

Facile fabrication of hierarchical textures for substrate-independent and durable superhydrophobic surfaces

Yuchun He,^a Lingxiao Wang,^a Tingni Wu,^a Zhipeng Wu,^a Yu Chen^a and Kai Yin^{*a,b}

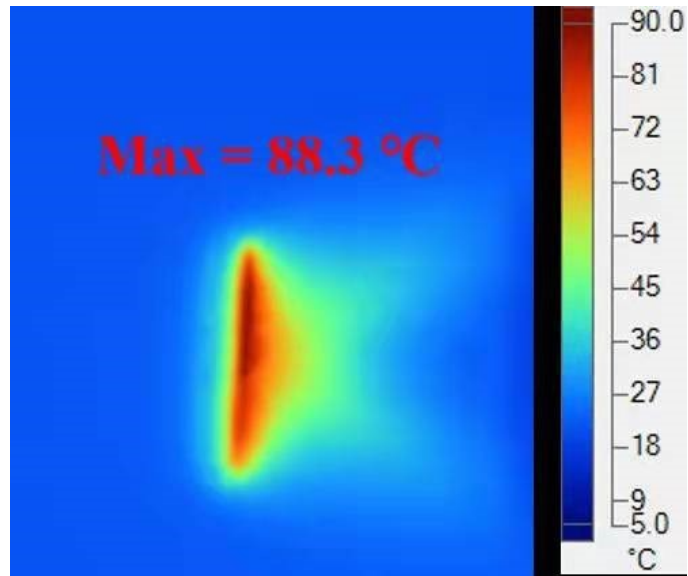
^a *Hunan Key Laboratory of Nanophotonics and Devices, School of Physics and Electronics, Central South University, Changsha, 410083, China*

^b *The State Key Laboratory of High Performance and Complex Manufacturing, College of Mechanical and Electrical Engineering, Central South University, Changsha 410083, China*

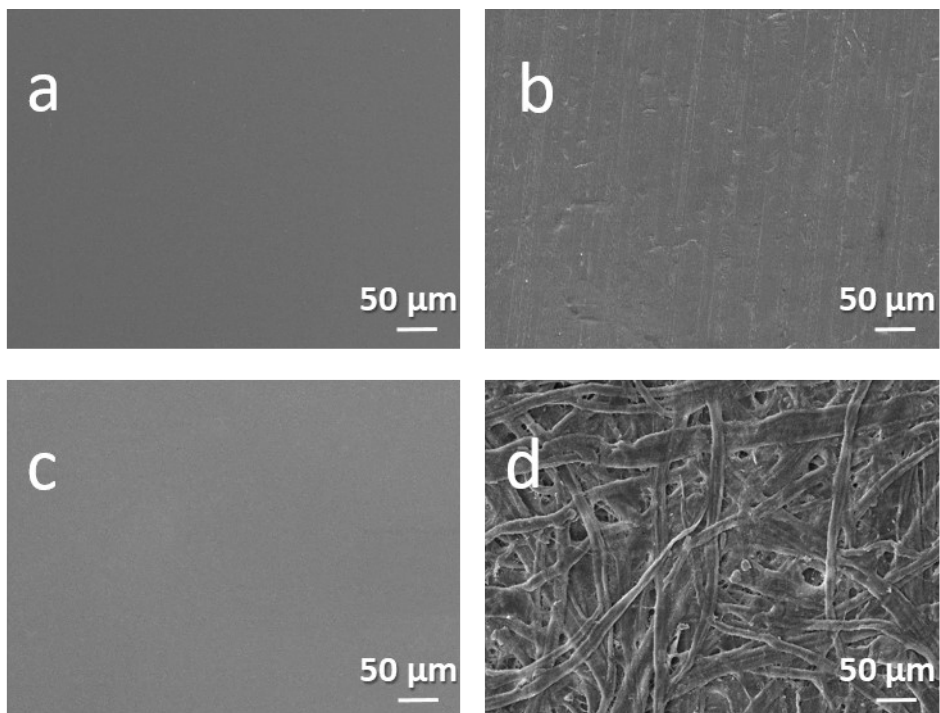
This file contains Supplementary Figures S1-S4.

*To whom correspondence should be addressed.

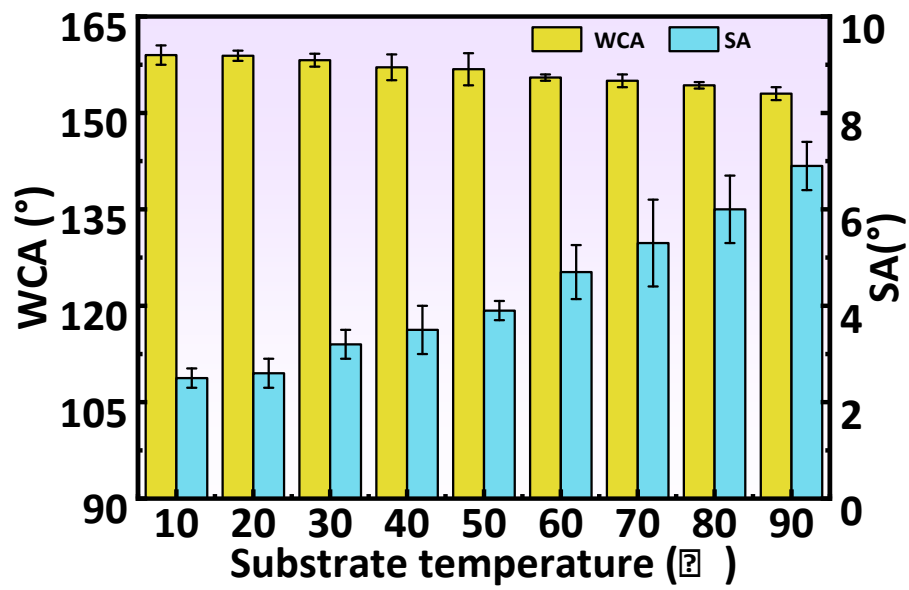
*Corresponding author: kaiyin@csu.edu.cn



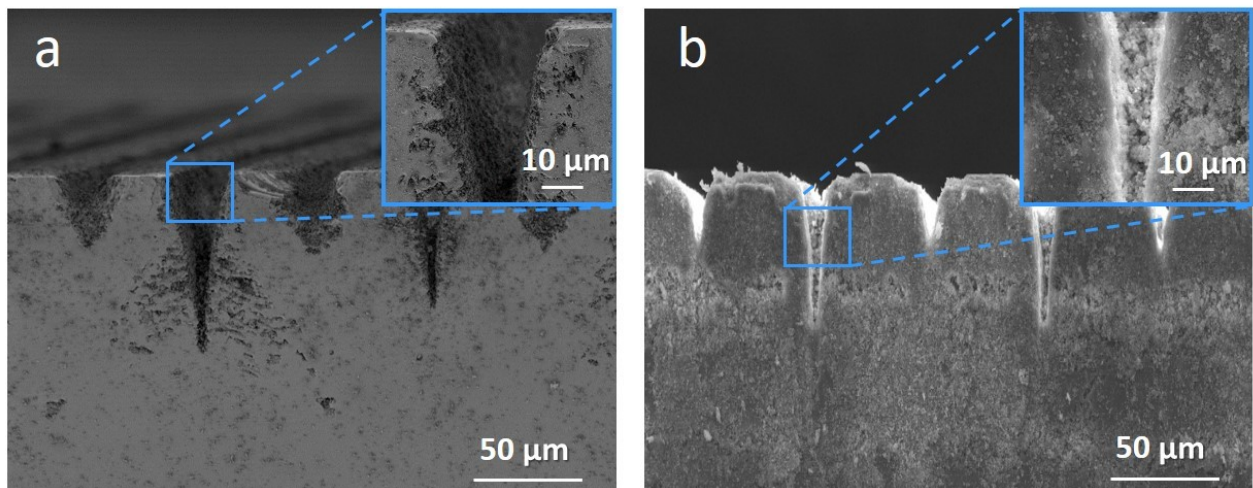
S1: IR temperature diagram of PTFE during laser treating.



S2: SEM images of pristine four substrates (quartz glass, stainless steel, silicon wafer, and paper).



S3: The WCAs and the SAs of the laser-treated quartz glass under different temperatures.



S4: SEM images of the cross-section of quartz glass treated with PTFE covered or not.