

## **A self-powered wearable brain-machine-interface system for real-time monitoring and regulating body temperature**

Chengze Xu<sup>a,f</sup>, Yan Xie<sup>c,f</sup>, Tianyan Zhong<sup>a</sup>, Shan Liang<sup>a</sup>, Hongye Guan<sup>a</sup>, Zhihe Long<sup>d</sup>, Hanyu Cao<sup>e</sup>, Lili Xing<sup>a,\*</sup>, Xinyu Xue<sup>a,\*</sup> and Yang Zhan<sup>b,\*</sup>

*<sup>a</sup> School of Physics, University of Electronic Science and Technology of China, Chengdu 611731, China.*

*<sup>b</sup> CAS Key Laboratory of Brain Connectome and Manipulation, the Brain Cognition and Brain Disease Institute (BCBDI), Shenzhen Key Laboratory of Translational Research for Brain Diseases, Shenzhen Institutes of Advanced Technology, Chinese Academy of Sciences; Shenzhen-Hong Kong Institute of Brain Science-Shenzhen Fundamental Research Institutions, Shenzhen, 518055, China.*

*<sup>c</sup> Department of Neurology, Sichuan Provincial People's Hospital, University of Electronic Science and Technology of China, Chengdu 610072, China.*

*<sup>d</sup> Department of Mechanical Engineering, City University of Hong Kong, Hong Kong 999077, China.*

*<sup>e</sup> Xiamen University, Xiamen 361005, China.*

*<sup>f</sup> These authors contributed equally to this work.*

**\*Corresponding authors:**

Xinyu Xue, e-mail address: xuexinyu@uestc.edu.cn

Yang Zhan, e-mail address: yang.zhan@siat.ac.cn

Lili Xing, e-mail address: xinglili@uestc.edu.cn

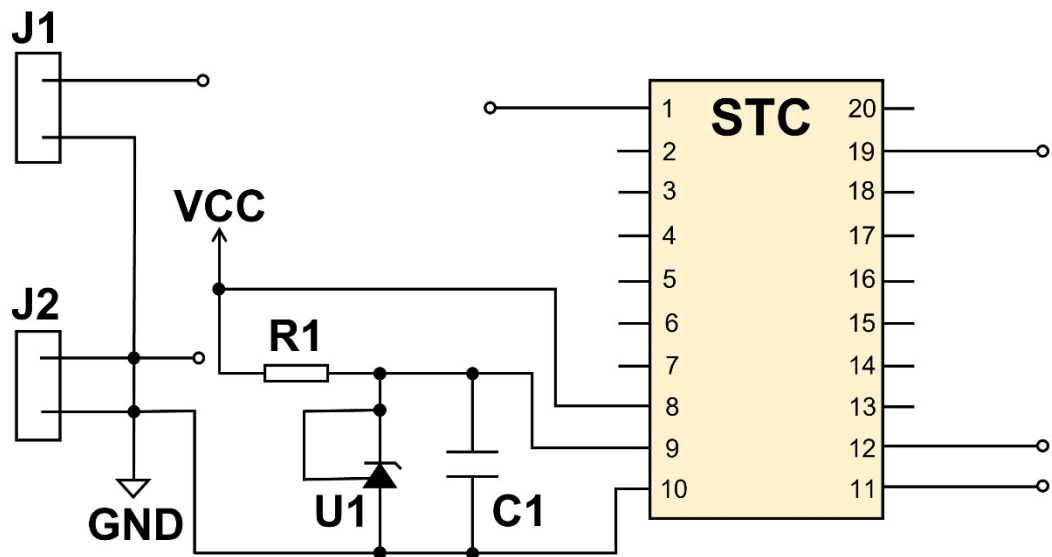
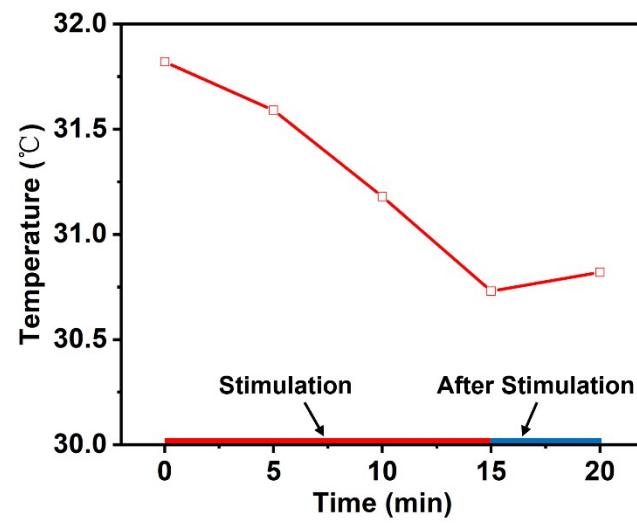


Fig. S1 The electric circuit of the data processing module.



**Fig. S2** The core temperature change of mouse 4 with and without electrical stimulation.