

Electronic Supporting Information for:

Block Copolymer Self-Assembly to Pattern Gold Nanodots for Site-Specific Placement of DNA Origami and Attachment of Nanomaterials

Dulashani R. Ranasinghe^a, Gregory Doerk^b, Basu R. Aryal^a, Chao Pang^a, Robert C. Davis^c, John N. Harb^d, Adam T. Woolley^{*a}

^aDepartment of Chemistry and Biochemistry, Brigham Young University, Provo, UT, USA

^bCenter for Functional Nanomaterials, Brookhaven National Laboratory, Upton, NY, USA

^cDepartment of Physics and Astronomy, Brigham Young University, Provo, UT, USA

^dDepartment of Chemical Engineering, Brigham Young University, Provo, UT, USA

Table of Contents

Fig. S1 Au dot height profiles.....	S1
Fig. S2 Bar DNA origami.....	S2
Fig. S3 Large area SEM images of DNA-coated Au NRs attached to bar DNA origami on Au islands functionalized with 3-MPA and Mg ²⁺ and MUTAB/DDT.....	S2
Fig. S4 SEM images of surfaces created with DNA-coated Au NPs on MUTAB/DDT functionalized Au dots.....	S3
Fig. S5 Large area SEM images of DNA-coated Au NRs seeded onto bar DNA origami structures attached to Au dots by sticky end hybridization.....	S3
Fig. S6 SEM images of DNA coated Au NRs seeded onto DNA origami structures hybridized to Au nanodots.....	S4
Equation S1.....	S4

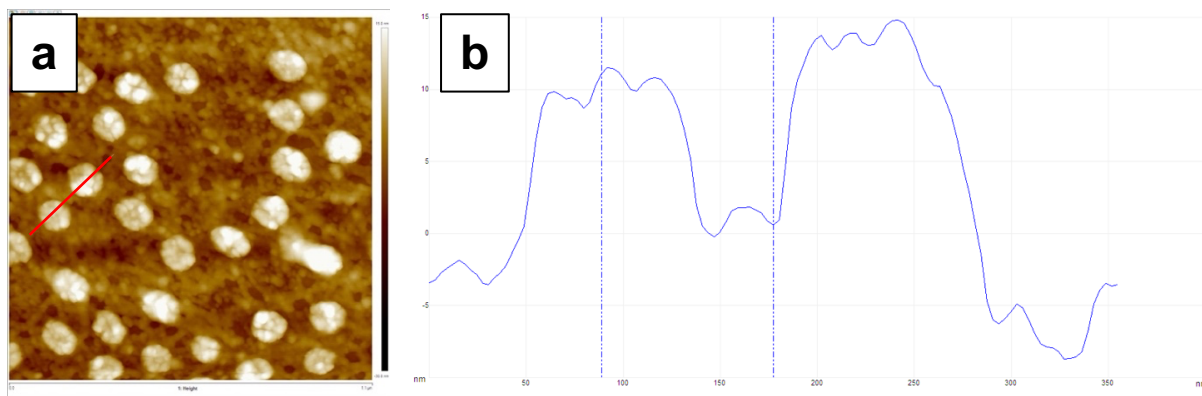


Fig. S1 Au dot height profiles. (a) AFM image; height scale is 45 nm. (b) Height profile along the red line in (a).

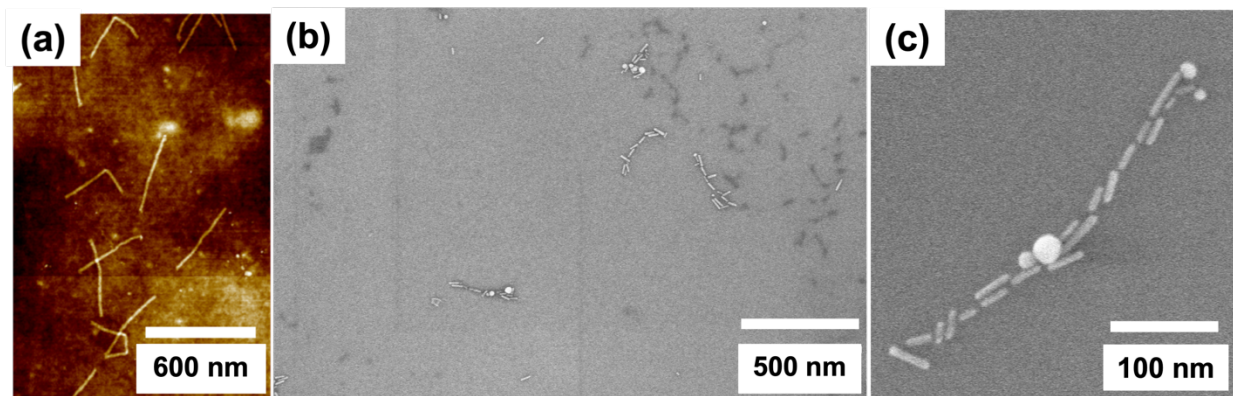


Fig. S2 Bar DNA origami. (a) AFM image on Si; height scale is 2 nm. (b-c) SEM images on Si after hybridization of DNA-coated Au nanorods; (b) large area and (c) zoom images.

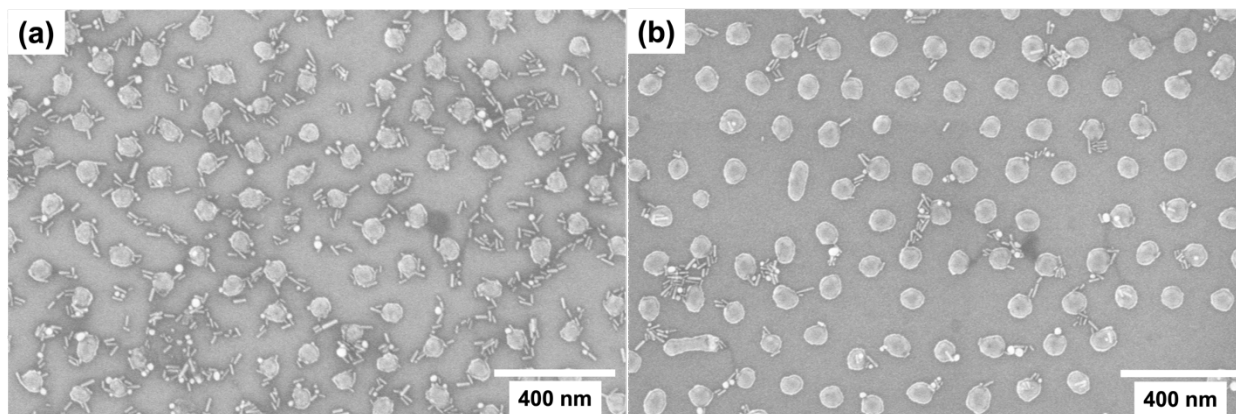


Fig. S3 Large area SEM images of DNA-coated Au NRs attached to bar DNA origami on Au islands functionalized with (a) 3-MPA and Mg^{2+} or (b) MUTAB/DDT.

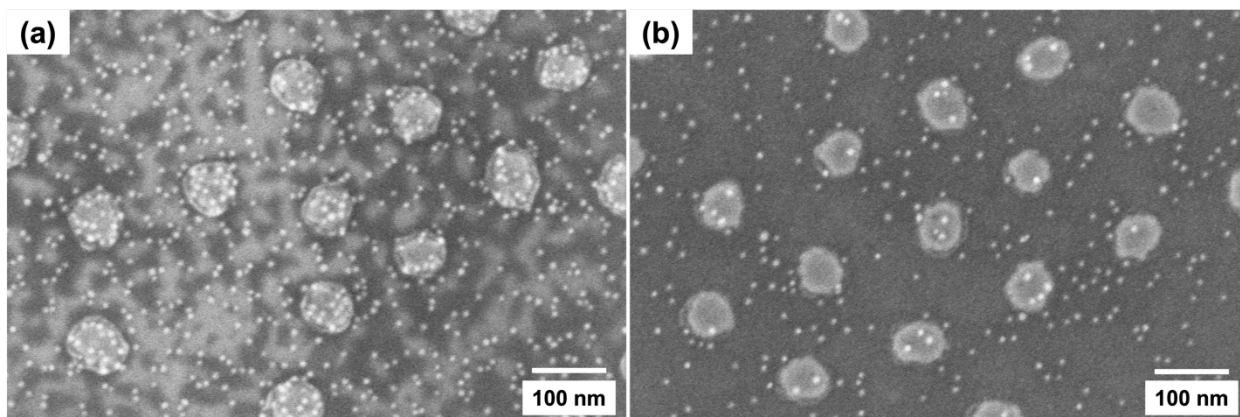


Fig. S4 SEM images of surfaces created with DNA-coated Au NPs on MUTAB/DDT functionalized Au dots. (a) As-prepared MUTAB/DDT functionalized Au dots after DNA-coated Au NP treatment. (b) MUTAB/DDT functionalized Au dots that underwent plasma and heat treatments before localizing DNA-coated Au NPs.

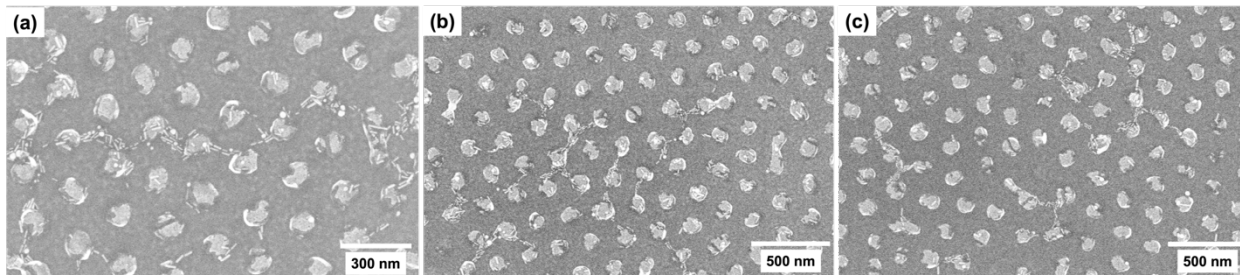


Fig. S5 Large area SEM images of DNA-coated Au NRs seeded onto bar DNA origami structures attached to Au dots by sticky end hybridization.

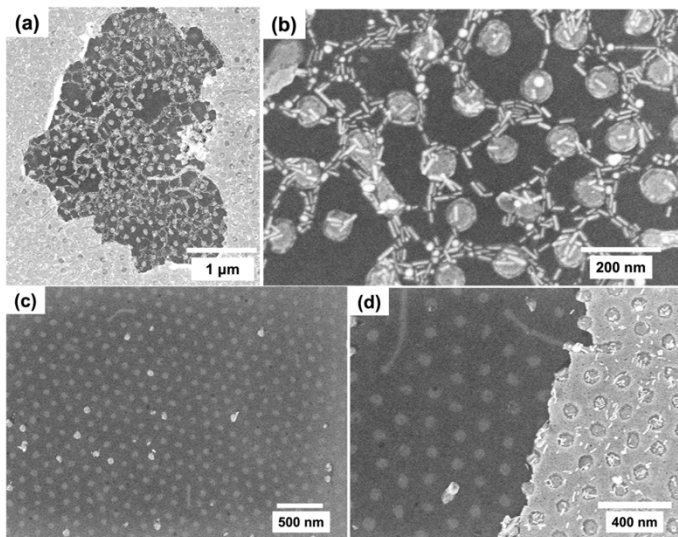


Fig. S6 SEM images of DNA coated Au NRs seeded onto DNA origami structures hybridized to Au nanodots. (a) Zoomed-out and (b) zoomed-in view. (c) No attachment of Au NRs was seen where there were no Au dots (d) zoomed-in view of a similar area as (c).

$$\text{Au NP surface density} = \frac{\frac{\text{Number of Au NPs on Au dots}}{\text{Au dot area}}}{\frac{\text{Number of Au NPs on background}}{\text{Total area} - \text{Au dot area}}} \quad (\text{Equation S1})$$