

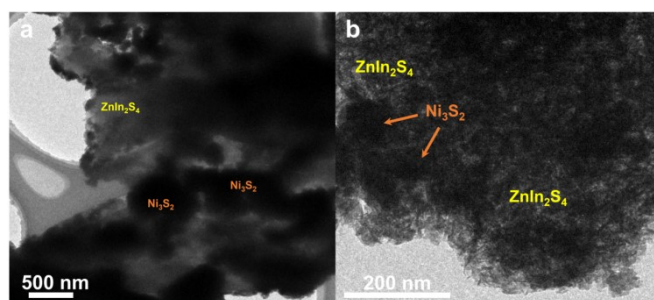
## Electronic Supplementary Information

### **Uniform-embeddable-distributed Ni<sub>3</sub>S<sub>2</sub> cocatalyst inside and outside of sheet-like ZnIn<sub>2</sub>S<sub>4</sub> photocatalyst for boosting photocatalytic hydrogen evolution**

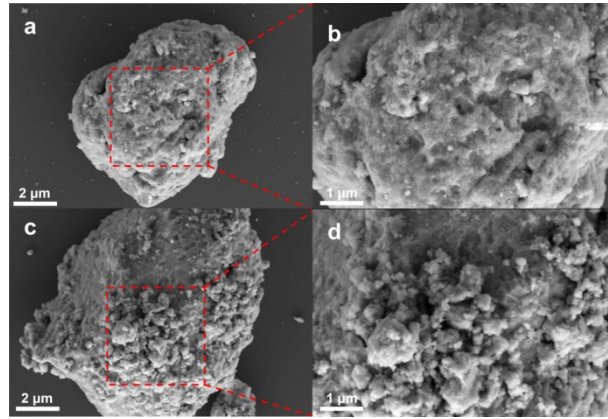
Bo Lin, Xin Ren, Zihao Chen, Hang Xiao, Baorong Xu, Guidong Yang\*

*XJTU-Oxford International Joint Laboratory for Catalysis, School of Chemical Engineering and Technology, Xi'an Jiaotong University, Xi'an 710049, China*

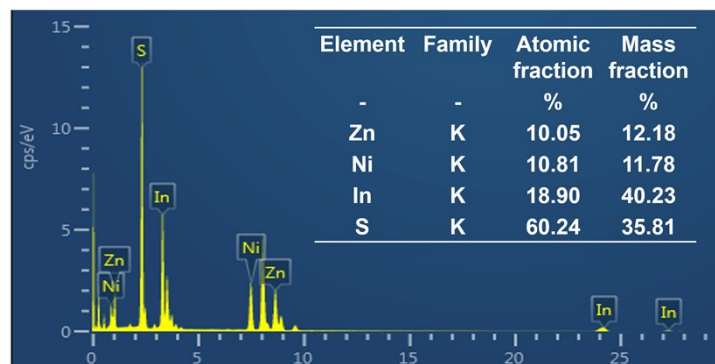
## Results



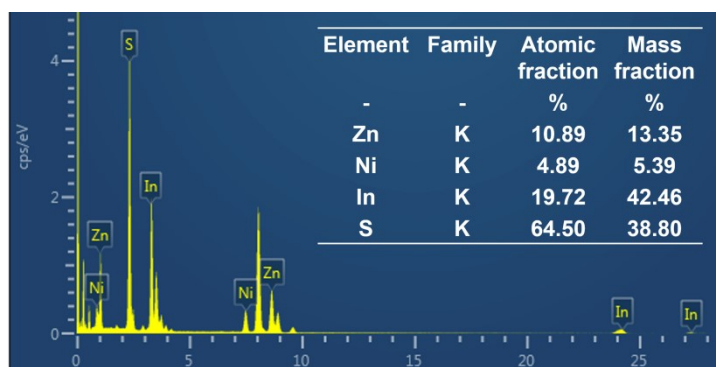
**Fig. S1.** TEM images of (a) TSLNiS/ZIS and (b) UEDNiS/ZIS.



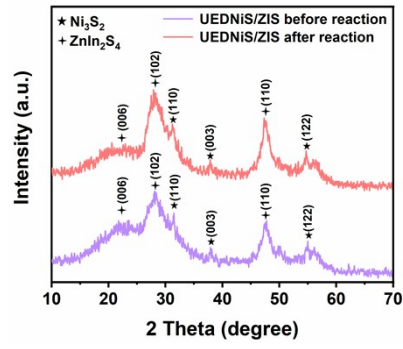
**Fig. S2.** SEM images of (a, b) TSLNiS/ZIS and (c, d) UEDNiS/ZIS.



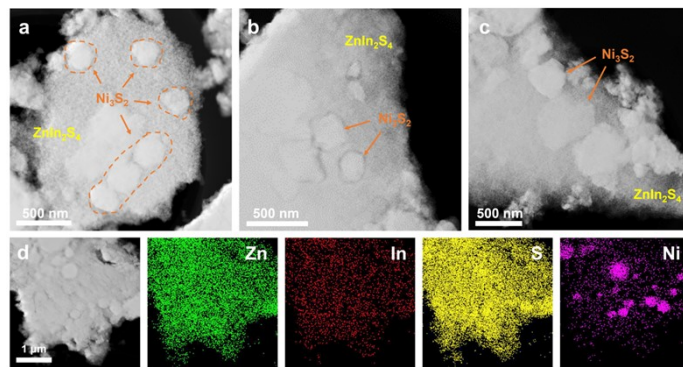
**Fig. S3.** EDX image of TSLNiS/ZIS. The unmarked signal peaks are corresponded to the C and Cu elements in the carbon-supported copper net used to load the samples in Mapping tests.



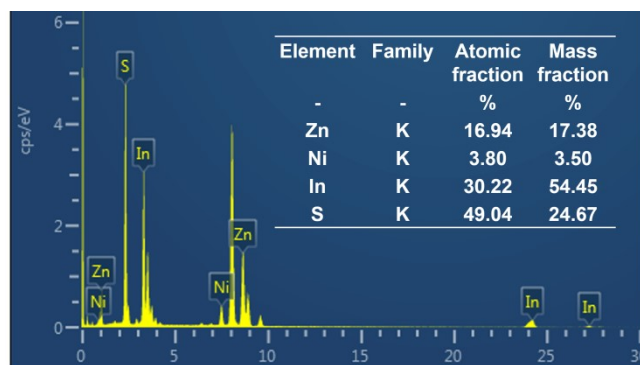
**Fig. S4.** EDX image of UEDNiS/ZIS. The unmarked signal peaks are corresponded to the C and Cu elements in the carbon-supported copper net used to load the samples in Mapping tests.



**Fig. S5.** XRD patterns of fresh UEDNiS/ZIS and UEDNiS/ZIS after 3 cycling tests.

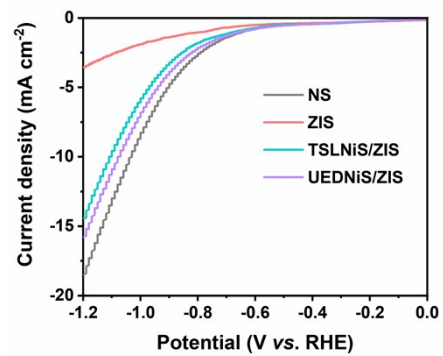


**Fig. S6.** (a-c) HAADF-STEM and (d) corresponding elemental mapping images of the recycled UEDNiS/ZIS after 3th photoreactions within 24 h.



**Fig. S7.** EDX image of the recycled UEDNiS/ZIS. The unmarked signal peaks are corresponded to the C and Cu elements in the carbon-supported copper net used to load the samples in Mapping tests.





**Fig. S8.** The LSV curves of UEDNiS/ZIS, TSLNiS/ZIS, ZIS and NS.

**Table S1.** Detailed surface areas and pore volume of UEDNiS/ZIS and TSLNiS/ZIS.

<b>Samples</b>	<b>BET Surface Area (m<sup>2</sup> g<sup>-1</sup>)</b>	<b>Pore Volume (cm<sup>3</sup> g<sup>-1</sup>)</b>	<b>Average pore size (nm)</b>
UEDNiS/ZIS	51.58	0.09	4.90
TSLNiS/ZIS	6.28	0.02	5.76