

## Cationic lipid modification of DNA tetrahedral nanocages enhances their cellular uptake

Ramesh Singh<sup>[a]</sup>, Pankaj Yadav<sup>[a]</sup>, Hema Naveena A<sup>[a]</sup> and Dhiraj Bhatia<sup>[a]</sup>

<sup>a</sup>Biological Engineering Discipline, Indian Institute of Technology Gandhinagar, Palaj, Gujarat 382355, India.

E-mail: [dhiraj.bhatia@iitgn.ac.in](mailto:dhiraj.bhatia@iitgn.ac.in), [ramesh.s@iitgn.ac.in](mailto:ramesh.s@iitgn.ac.in)

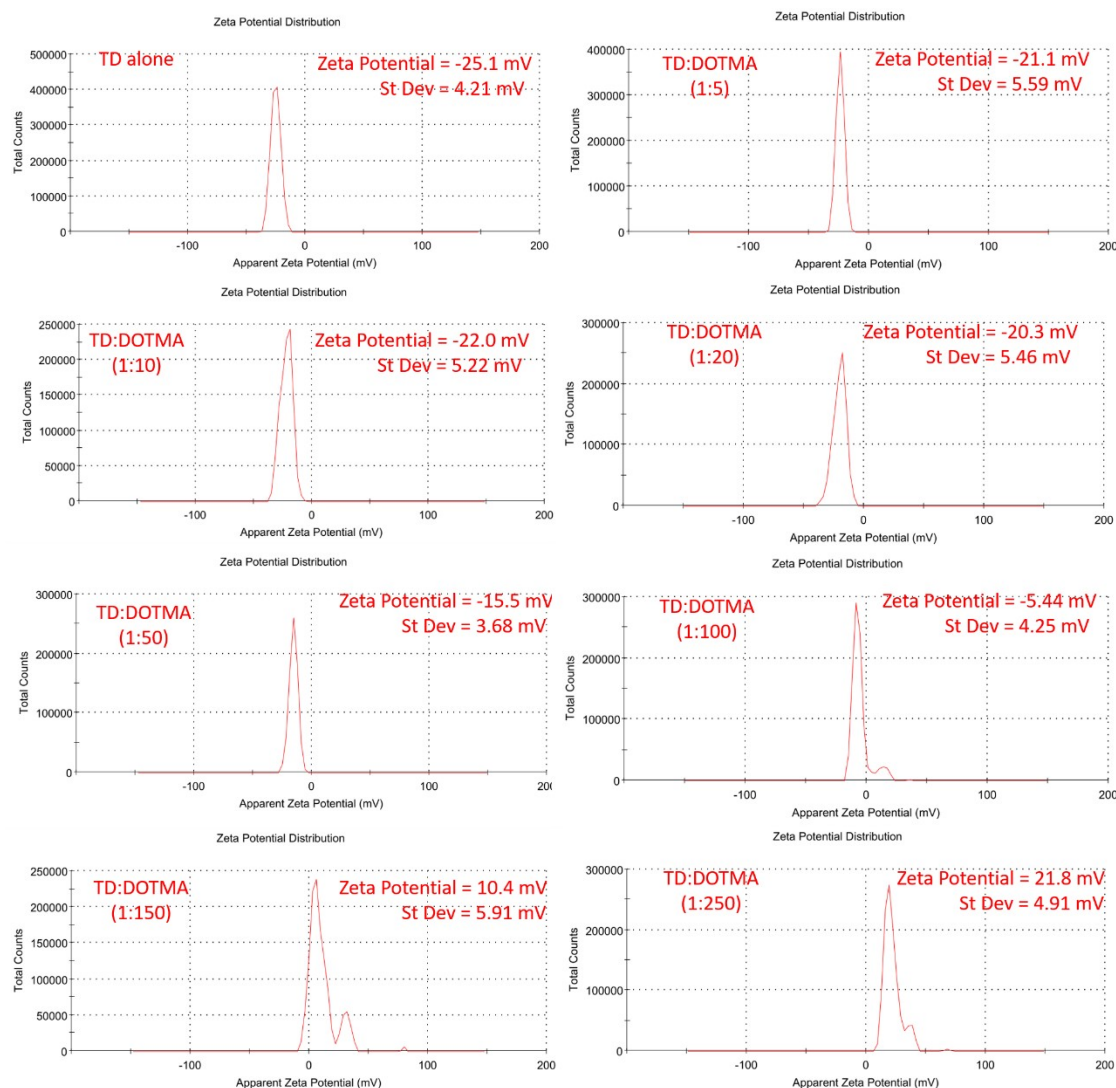
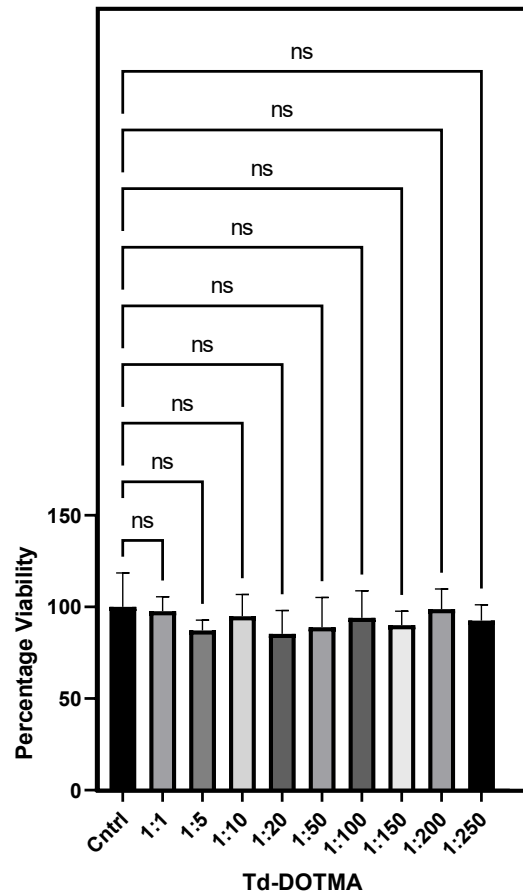
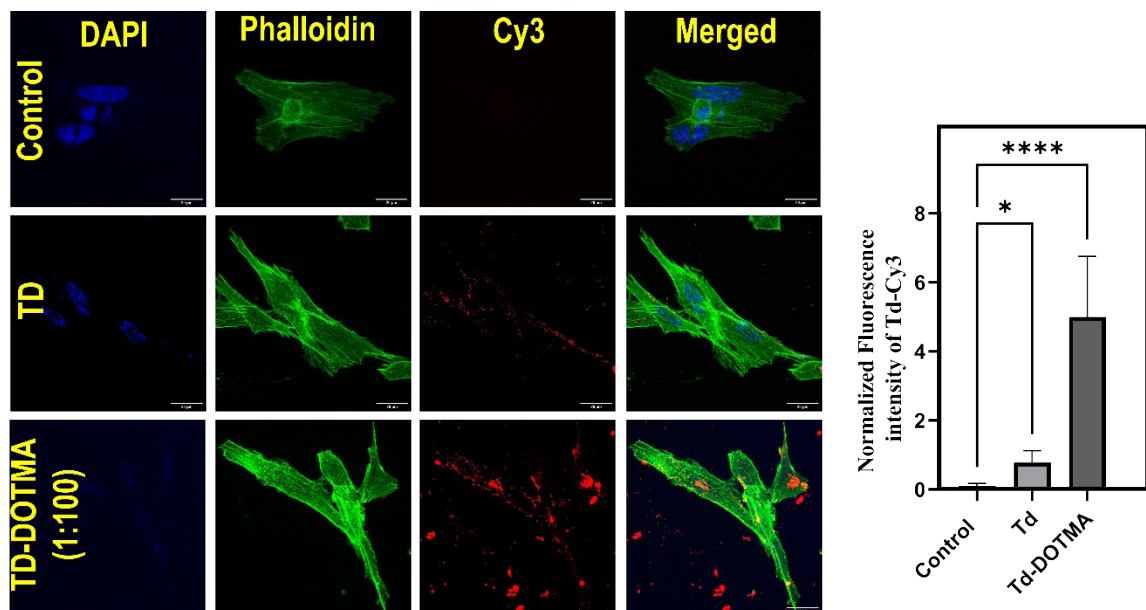


Figure S1. Zeta potential graph of TD and TD:DOTMA at different ratios.



**Figure S2.** Bar graph representing cell viability (%) obtained from MTT assay test.



**Figure S3.** Cellular uptake of TD-DOTMA nanostructures in RPE-1 cells. (A) Confocal imaging of RPE-1 cells treated with DNA Cy3TD (150nm) and with Cy3TD (1500nm)-DOTMA in (1:100) ratios for 30 min and corresponding quantification bar graph TD-Cy3 uptake.