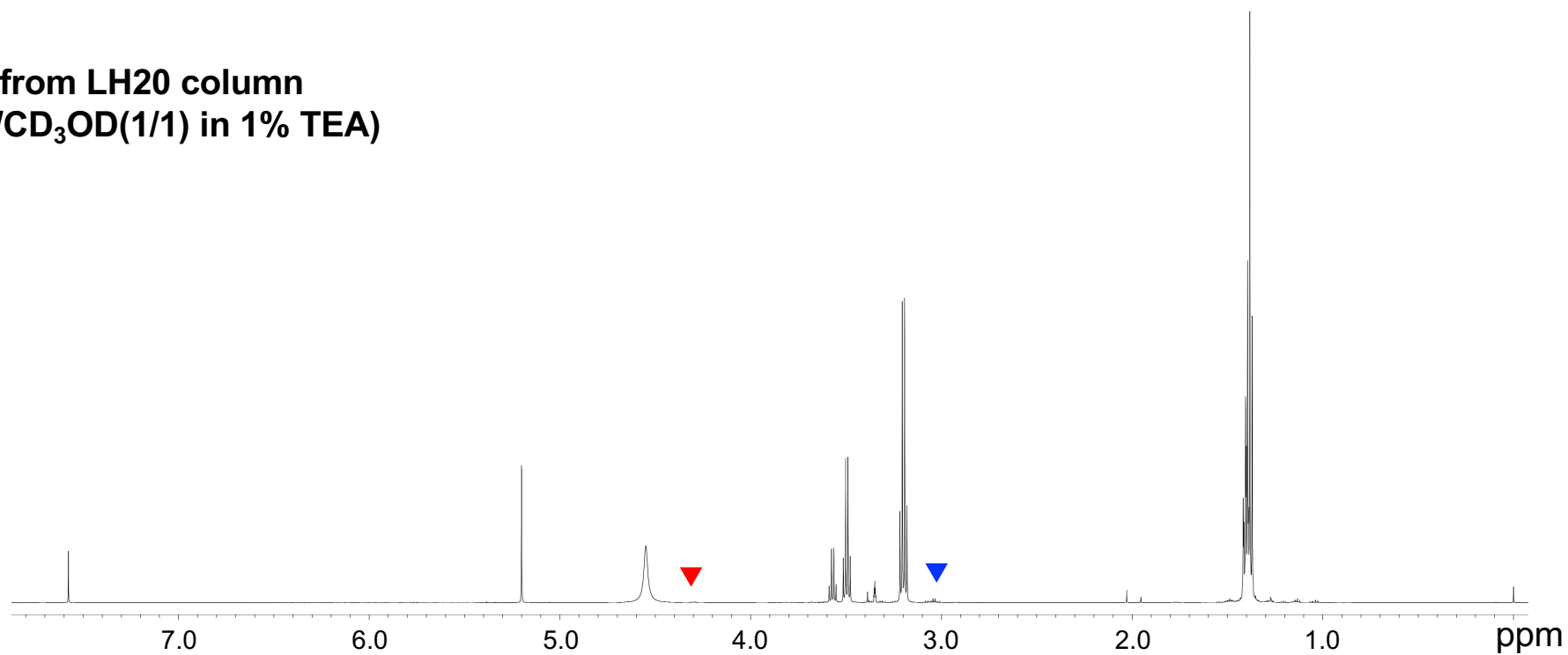
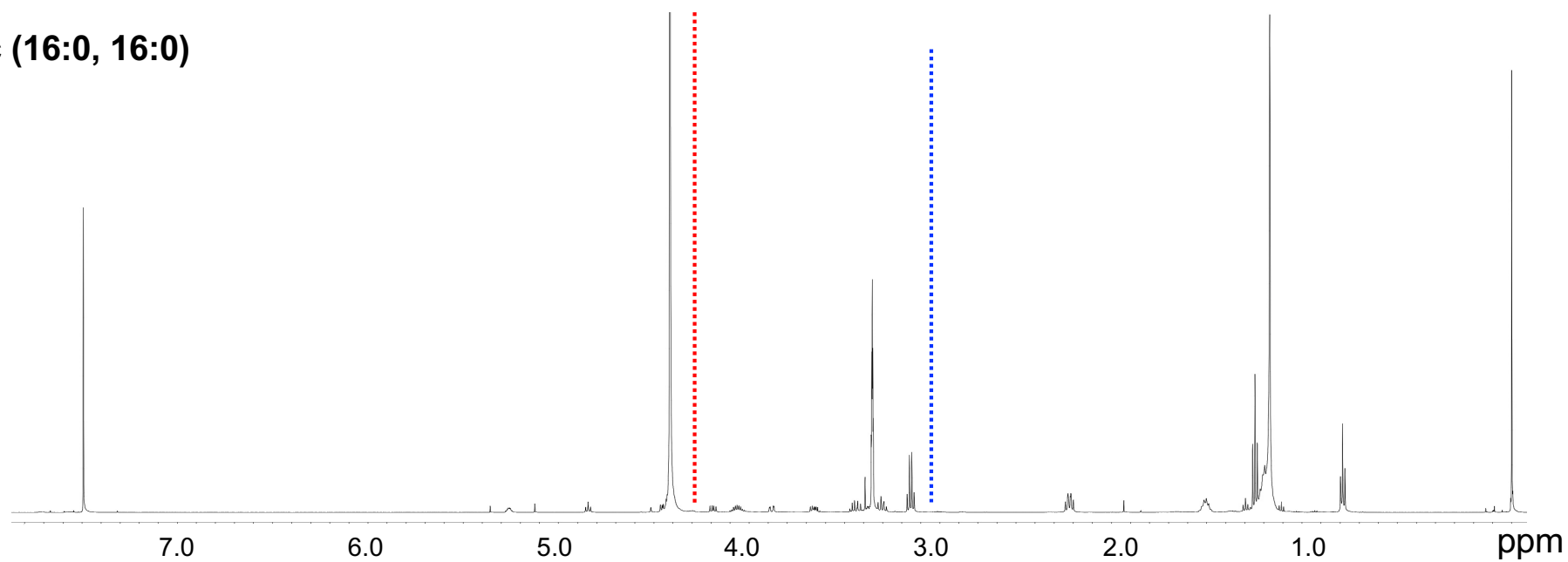


600 MHz ^1H - NMR in $\text{CDCl}_3/\text{CD}_3\text{OD}(2/1)$

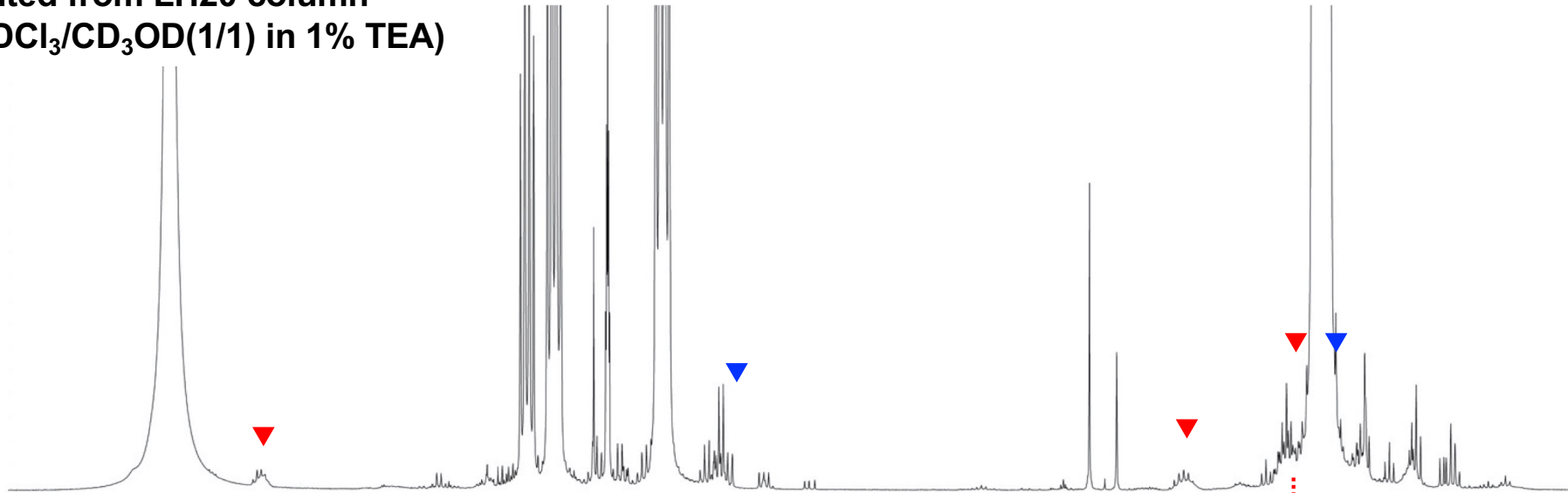
Eluted from LH20 column
($\text{CDCl}_3/\text{CD}_3\text{OD}(1/1)$ in 1% TEA)



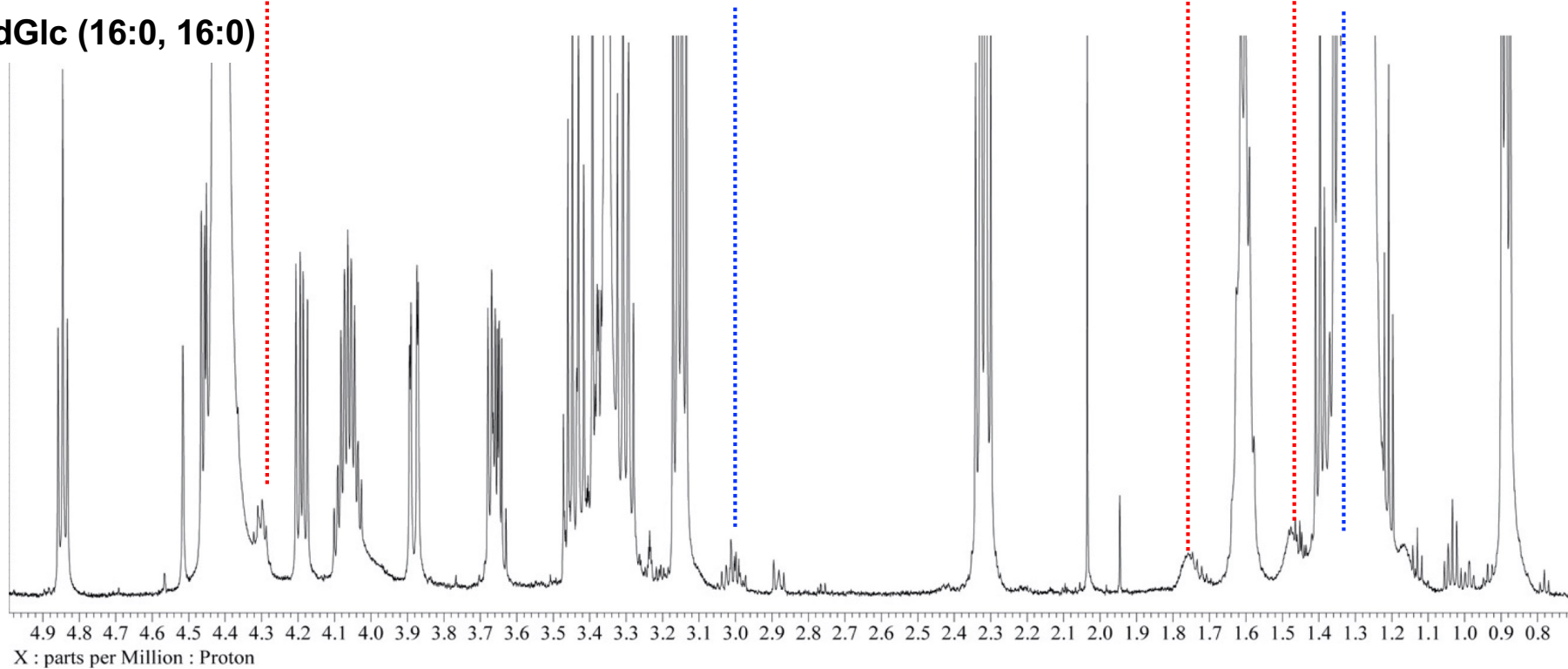
PtdGlc (16:0, 16:0)



Eluted from LH20 column
(CDCl₃/CD₃OD(1/1) in 1% TEA)

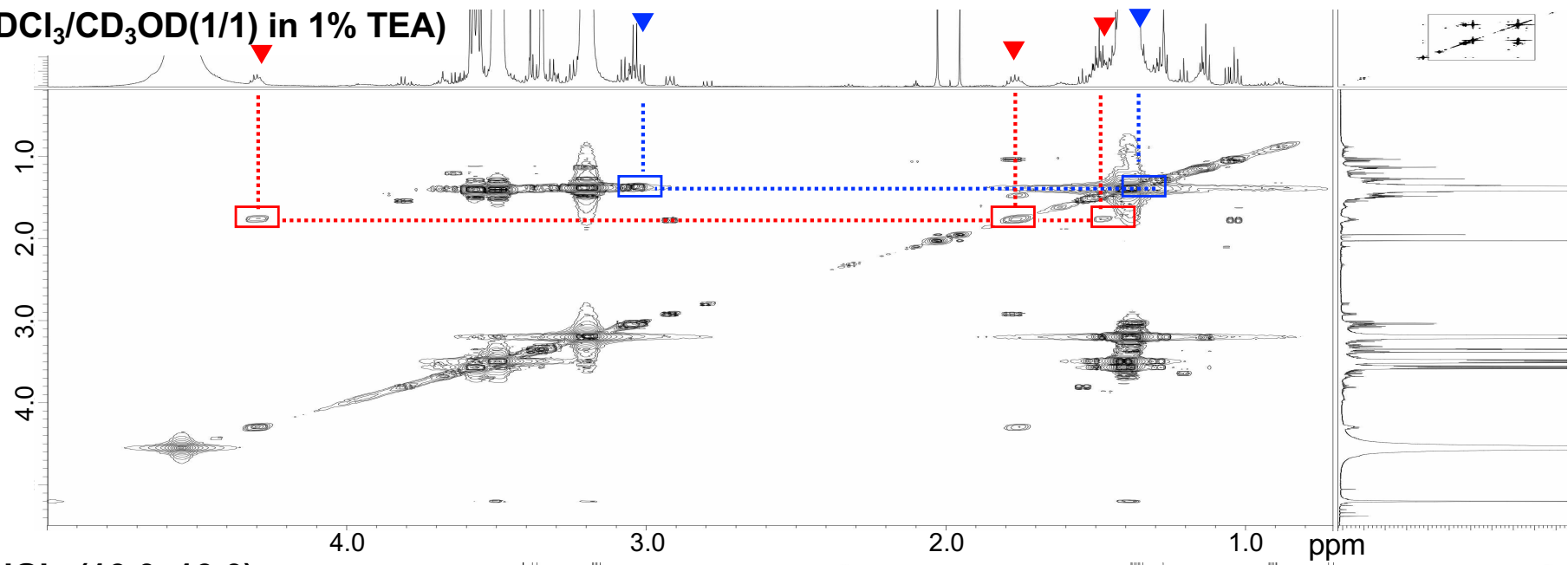


PtdGlc (16:0, 16:0)



H-H cosy spectra (CDCl₃/CD₃OD(2/1))

Eluted from LH20 column
(CDCl₃/CD₃OD(1/1) in 1% TEA)



PtdGlc (16:0, 16:0)

