

**Supplementary data**

**for**

**Amphiphilic Conjugated Block Copolymers as NIR-Bioimaging Probes**

Axel-Laurenz Buckinx,<sup>a</sup> Ashley Rozario,<sup>a</sup> Toby Bell,<sup>a</sup> Jasper Michels<sup>b</sup> and Tanja Junkers<sup>a</sup>

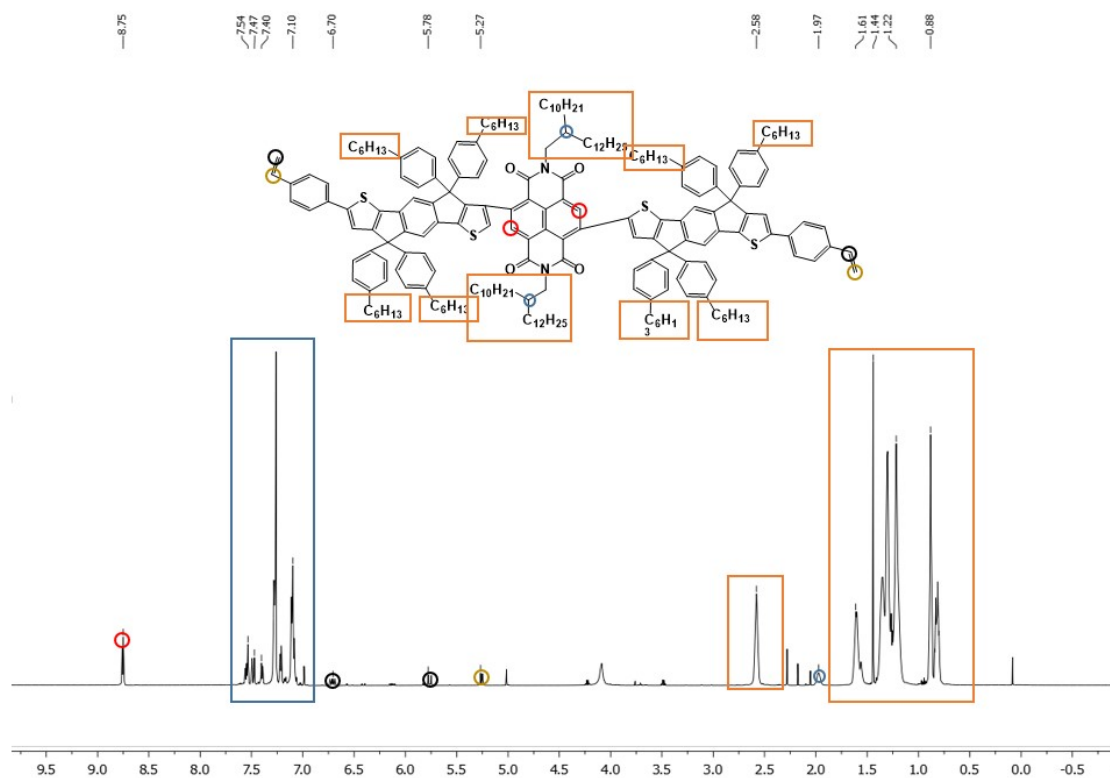


Figure S1 NMR spectrum of styryl endcapped P(IDT-NDI)

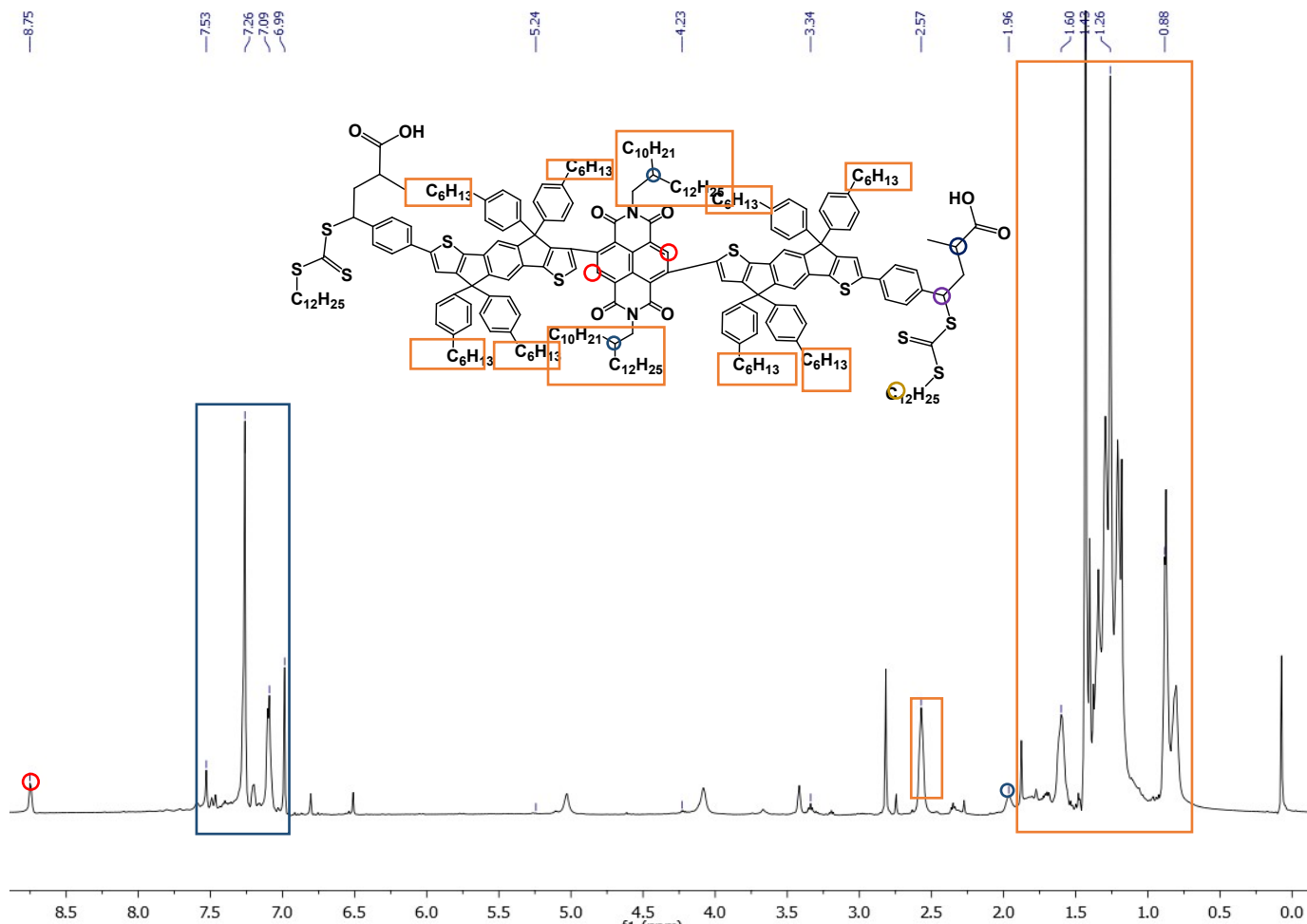


Figure S2 NMR Spectrum of P(IDT-NDI) Macro-CTA

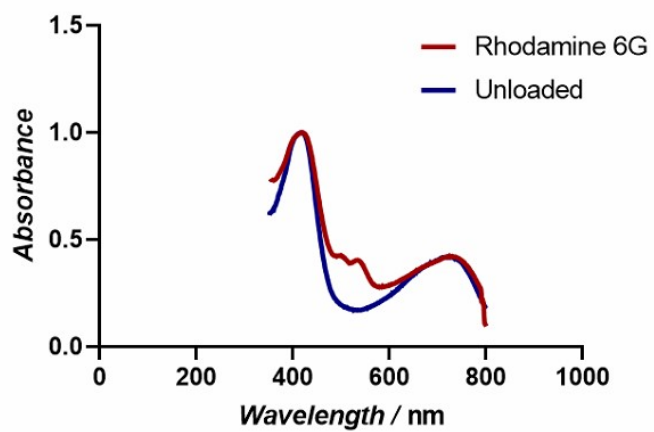


Figure S3 Absorbance spectra of unloaded micelles (blue), micelles loaded with Rhodamine (red)

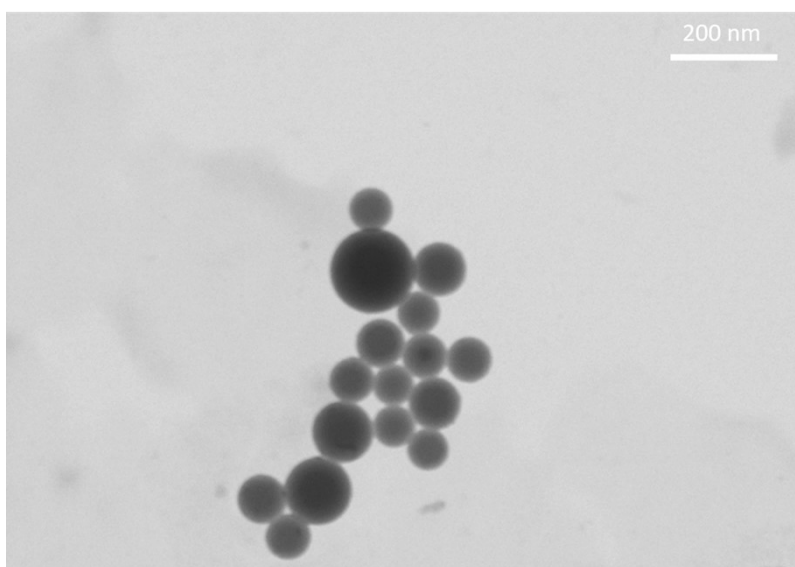


Figure S4 Widefield STEM figure of the obtained nanoaggregates