

Electronic Supplementary Information (ESI) for Polymer Chemistry. This journal is ©
The Royal Society of Chemistry 2022

Electronic Supplementary Information (ESI) for:

Tracking side reactions of the inverse vulcanization process and developing monomer selection
guidelines

Yusuke Onose,^a Yuri Ito,^a Junpei Kuwabara ^{*a} and Takaki Kanbara ^{*a}

a. Tsukuba Research Center for Energy Materials Science (TREMS), Graduate School of Pure
and Applied Sciences, University of Tsukuba, 1-1-1 Tennodai, Tsukuba, Ibaraki 305-8573, Japan. E-
mail: kanbara@ims.tsukuba.ac.jp, kuwabara@ims.tsukuba.ac.jp

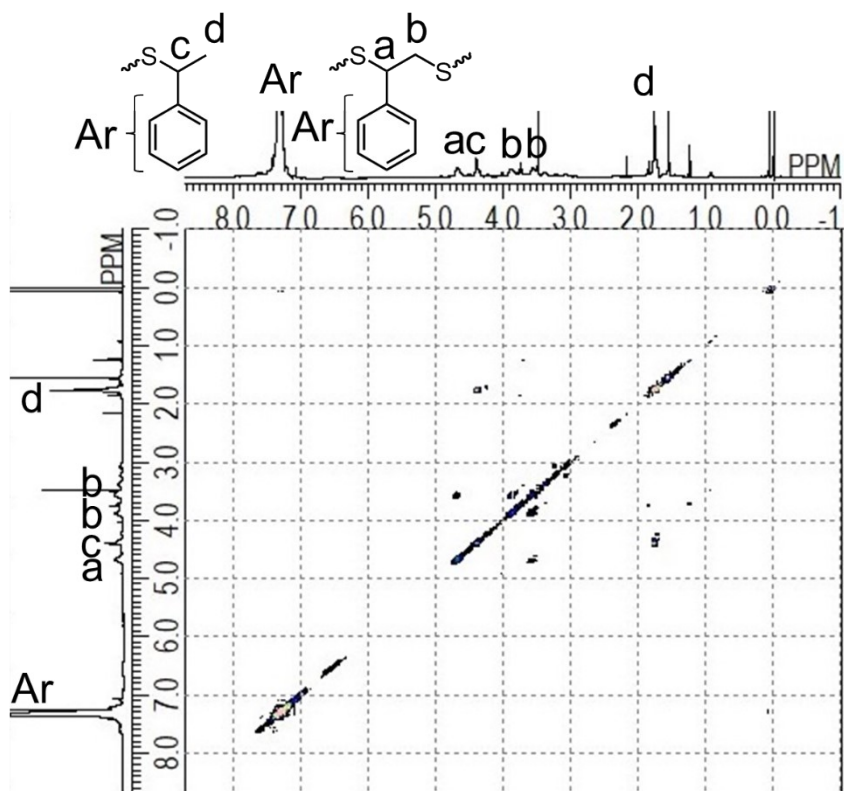


Figure S1. H-H COSY spectrum of Polymer B (400 MHz, CDCl₃, r.t.).

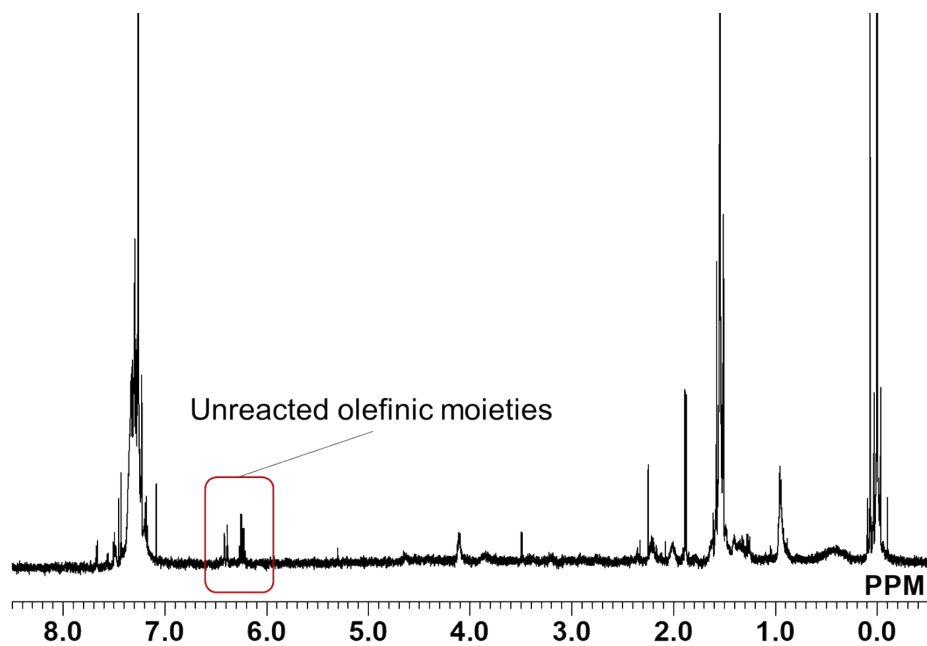
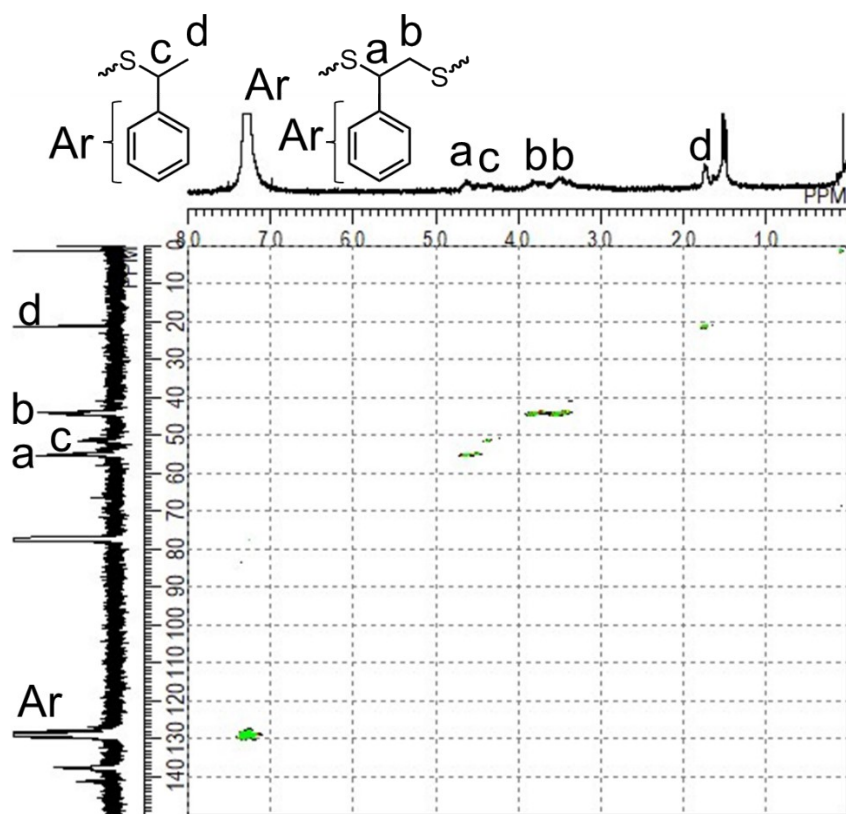


Figure S3. ¹H NMR spectrum of the crude product of the reaction of monomer D with S₈ (400 MHz, CDCl₃, r.t.).

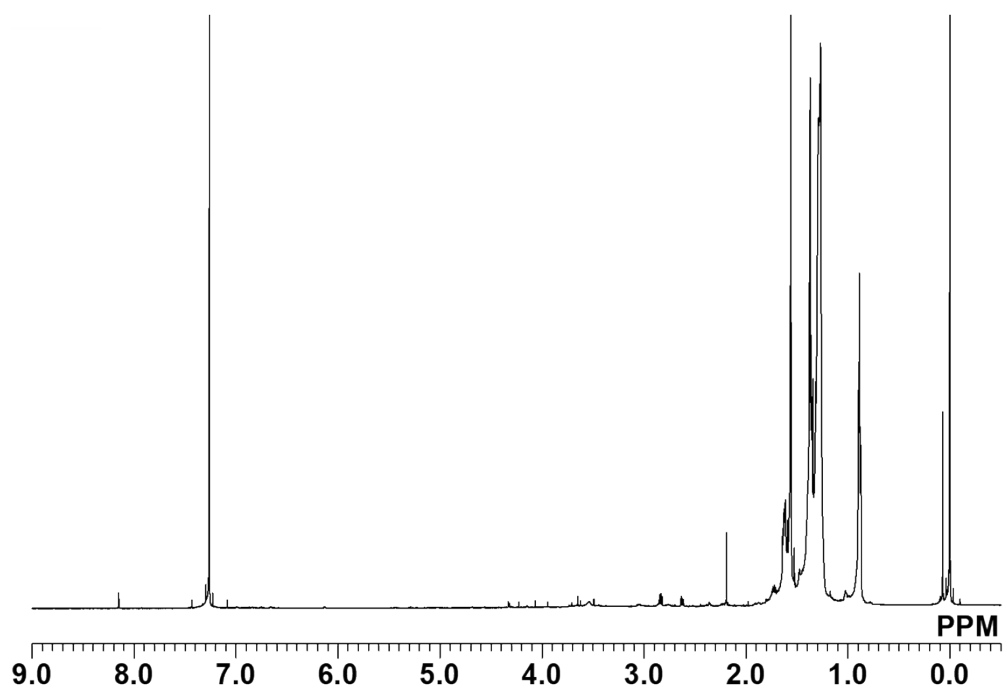


Figure S4. ¹H NMR spectrum of the crude product of the reaction of monomer E with S₈
(400 MHz, CDCl₃, r.t.).

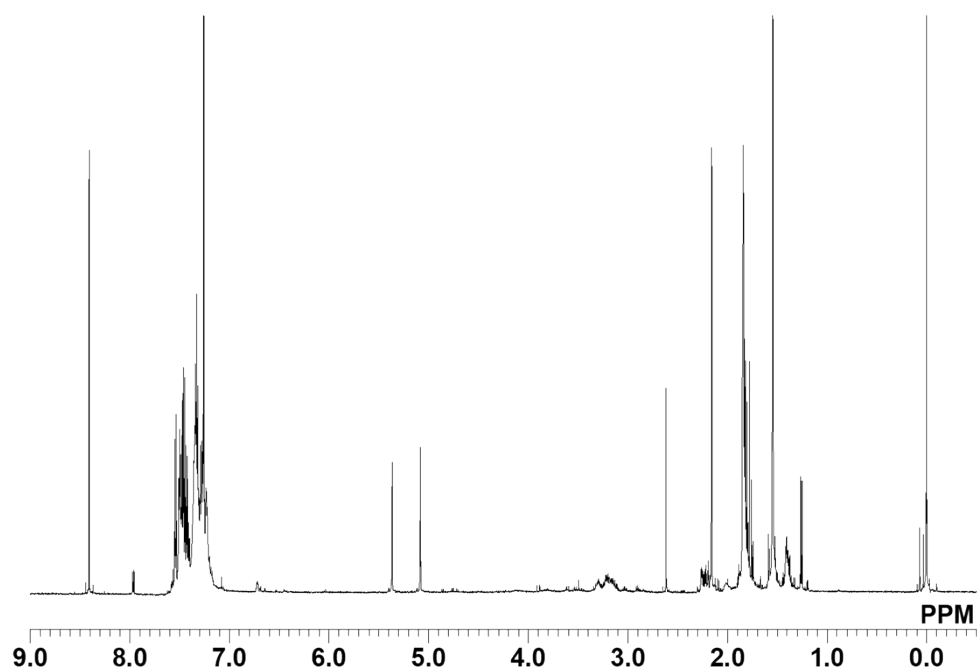


Figure S5. ¹H NMR spectrum of the crude product of the reaction of monomer F with S₈
(400 MHz, CDCl₃, r.t.).

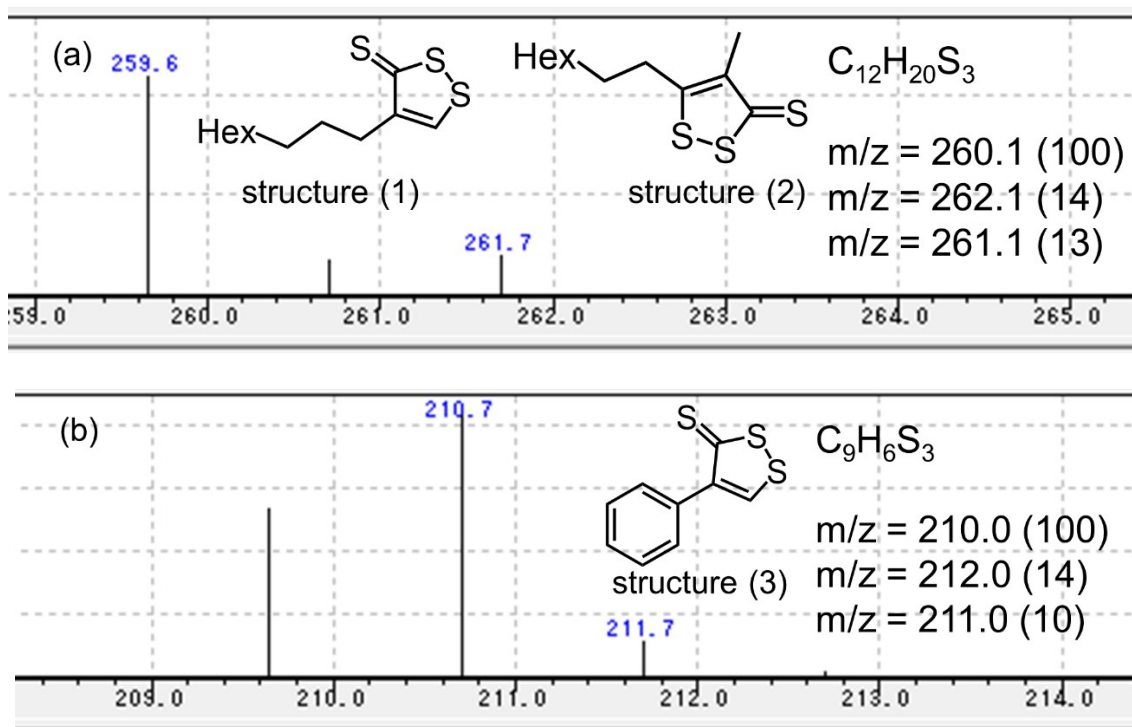


Figure S6. (a)GC-MS spectra of structure (1) and (2), (b) GC-MS spectrum of structure (3).