

Supporting Information

Exfoliating layered zeolite MFI into unilamellar nanosheets in solution as precursors for the synthesis of hierarchical nanocomposites and oriented films

Wieslaw J. Roth,^{*a} Takayoshi Sasaki,^{*c} Karol Wolski,^a Barbara Gil,^a Szczepan Zapotoczny,^a Jiri Cejka,^b Martin Kubu,^b Michal Mazur,^b Yasuo Ebina,^c Nobuyuki Sakai,^c Dai-Ming Tang,^c and Renzhi Ma^c

^aJagiellonian University, Faculty of Chemistry, Gronostajowa 2, 30-387 Kraków, Poland

^bDepartment of Physical and Macromolecular Chemistry, Faculty of Science, Charles University, Hlavova 8, 12840 Prague 2, Czech Republic

^cInternational Centre for Materials Nanoarchitectonics (WPI-MANA), National Institute for Materials Science (NIMS), 1-1 Namiki, Tsukuba, Ibaraki 305-0044, Japan.

*corresponding authors

Email: wieslaw.roth@uj.edu.pl, sasaki.takayoshi@nims.go.jp

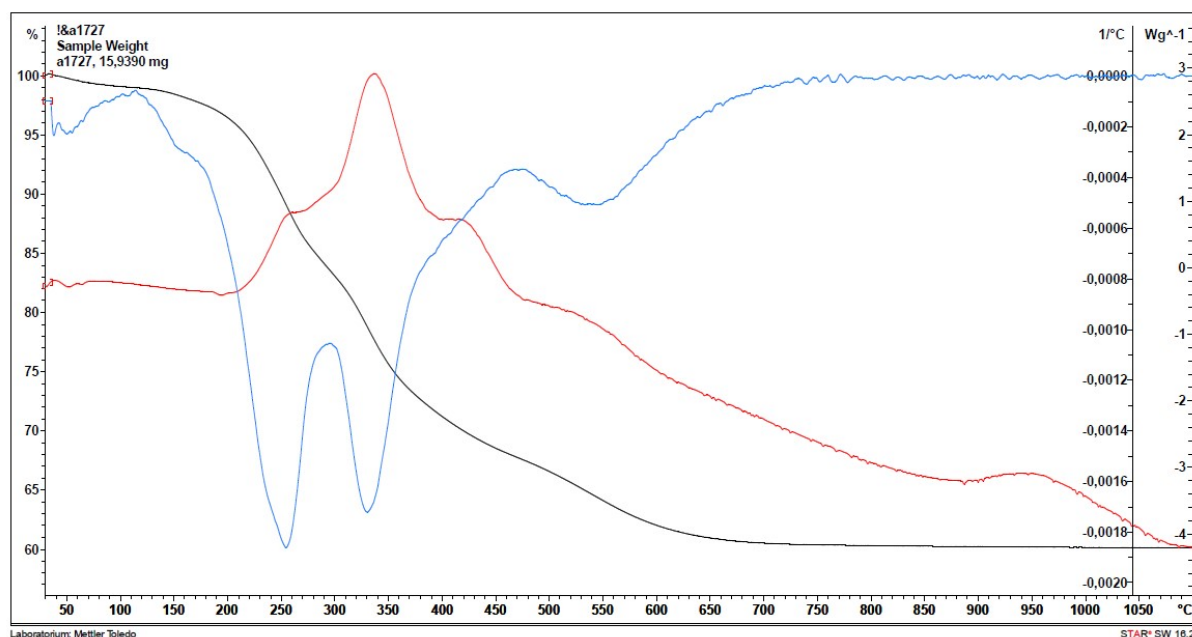


Figure S1. TG-DTA plots for an as-synthesized lamellar MFI: TG (thermal gravimetry, black), DTG (differential scanning gravimetry, blue, right scale, 1/C) and DSC (differential scanning calorimetry red, right scale, Wg⁻¹).

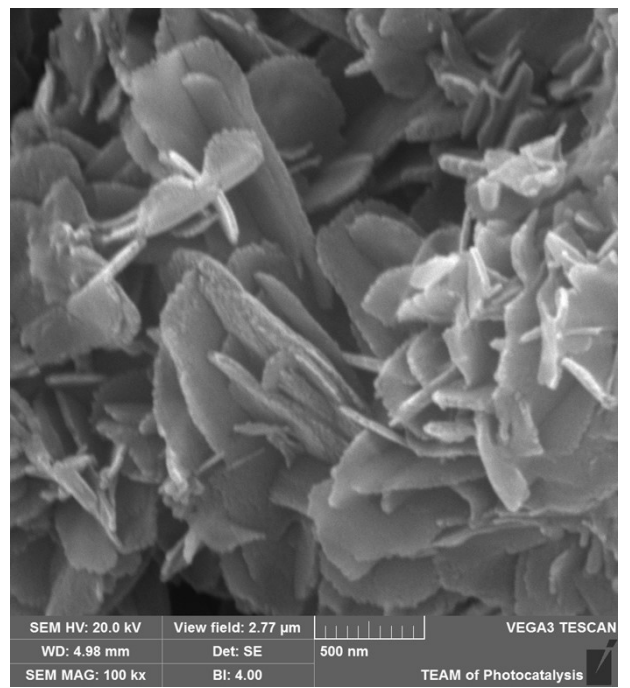
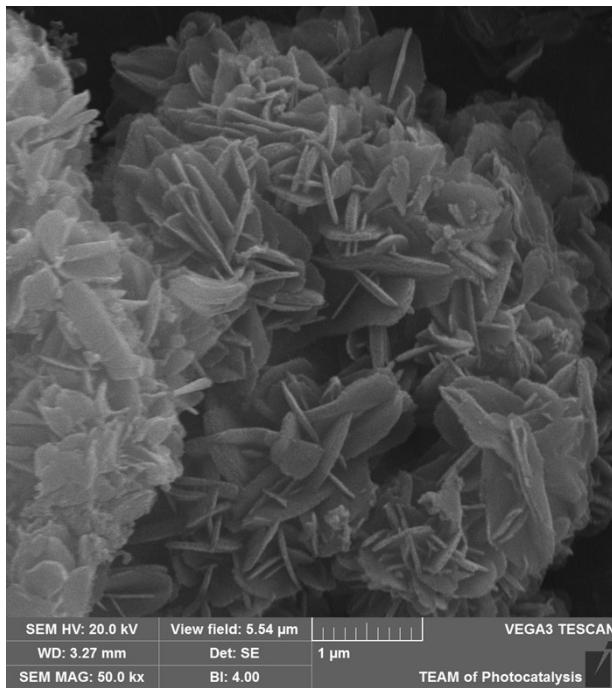


Figure S2. SEM of as-synthesized lamellar MFI