

Supplementary Information

White-Emitting Film of Diblock Copolymer Micelles with Perovskite Nanocrystals

*Kyunghyeon Lee[†], Joon Young Kim[†], and Byeong-Hyeok Sohn**

Department of Chemistry, Seoul National University, Seoul 08826, Republic of Korea

[†]Equal contribution.

*Corresponding Author. E-mail address: bhsohn@snu.ac.kr

Tel: 82-2-883-2154 Fax: 82-2-889-1568

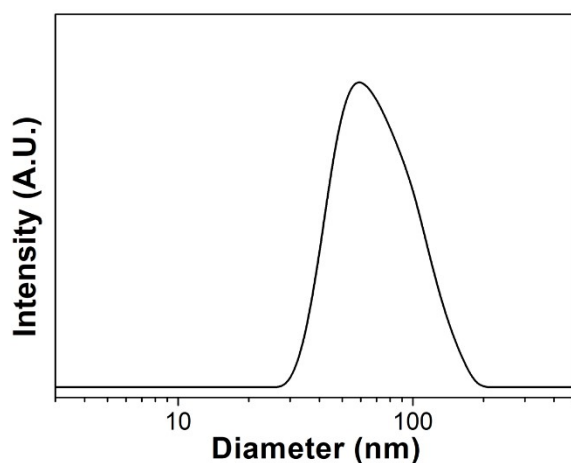


Figure S1. DLS distribution of PS-*b*-P2VP micelles having CsPbBr₃ nanocrystals.

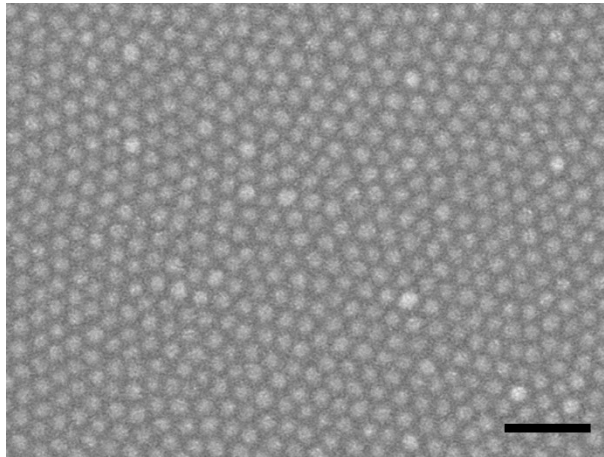


Figure S2. An SEM image of a monolayer of PS-*b*-P2VP micelles having CsPbBr₃ nanocrystals dip-coated on a quartz substrate. The scale bar is 200 nm.

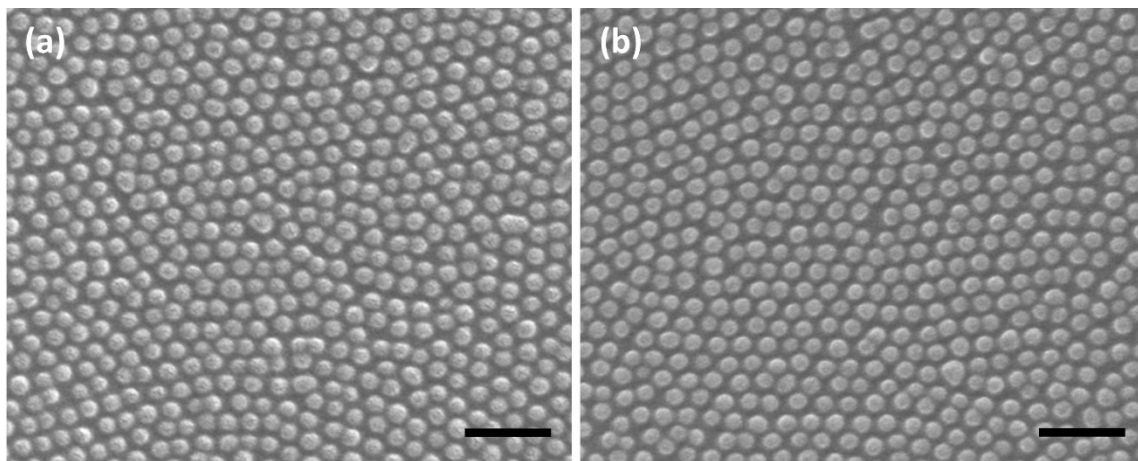


Figure S3. SEM images of a monolayer of PS-*b*-P2VP micelles coated on a stretchable PDMS elastomer: (a) before extension; (b) after extension. The scale bars are 200 nm.

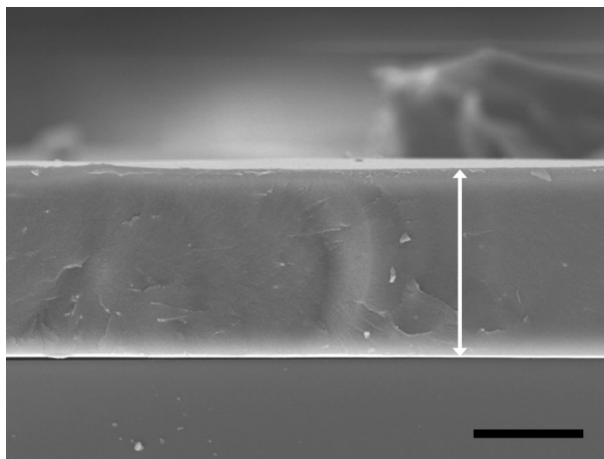


Figure S4. Side-view SEM image of the white-emitting film with the arrow indicating the thickness of $\sim 18 \mu\text{m}$. The scale bar is $10 \mu\text{m}$.