

Figure S1: Star polymer of UV and RI signal as a function of elution time
Linking reaction: (1) linking time=60min; (2), (3), (4), (5), linking time=2 min; $T=-80^{\circ}\text{C}$;
Hex/MeCl=6/4 (v/v)

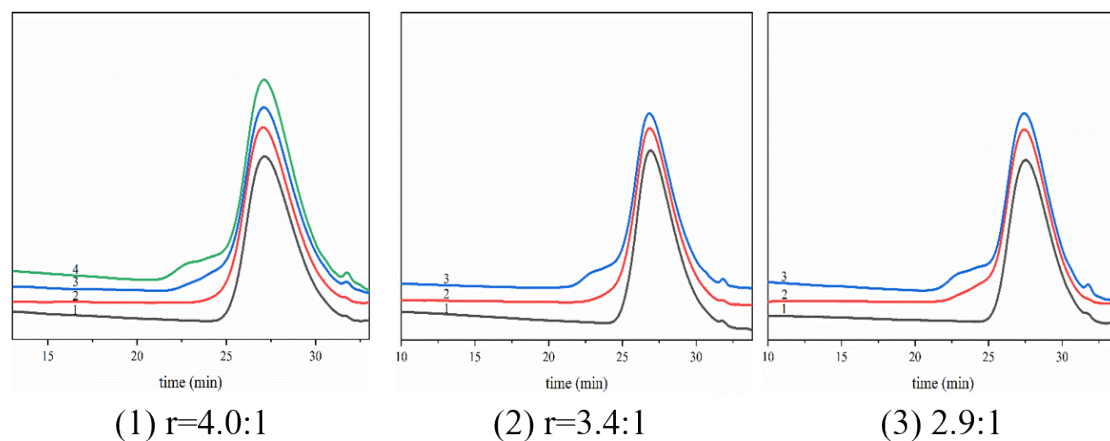


Figure S2: RI signal as a function of elution time at different coupling reaction times
linking time/min: 1-0min, 2-2min, 3-4min, 4-6min; $T=-80^{\circ}\text{C}$; Hex/MeCl=6/4 (v/v)