

Supplementary Information to Graphene Oxide Reinforced Silk Fibroin Nanocomposite as an Electroactive Interface for Estimation of Dopamine

Afifa Noor,^{a,b} Hamad Khalid,^{*a} Muhammad Aslam,^b Akhtar Hayat,^a Ather Farooq Khan,^a Muhammad Nasir,^a Aqif Anwar Chaudhry,^a Mian Hasnain Nawaz^{*a}

^a Interdisciplinary Research Centre in Biomedical materials (IRCBM), COMSATS University Islamabad, Lahore Campus, 54000, Pakistan

^b Department of Chemistry, Division of Science and Technology, University of Education, Lahore, 54000, Pakistan

Contact: (HK) hamadkhalid@cuilahore.edu.pk ;(MHN) mhnawaz@cuilahore.edu.pk

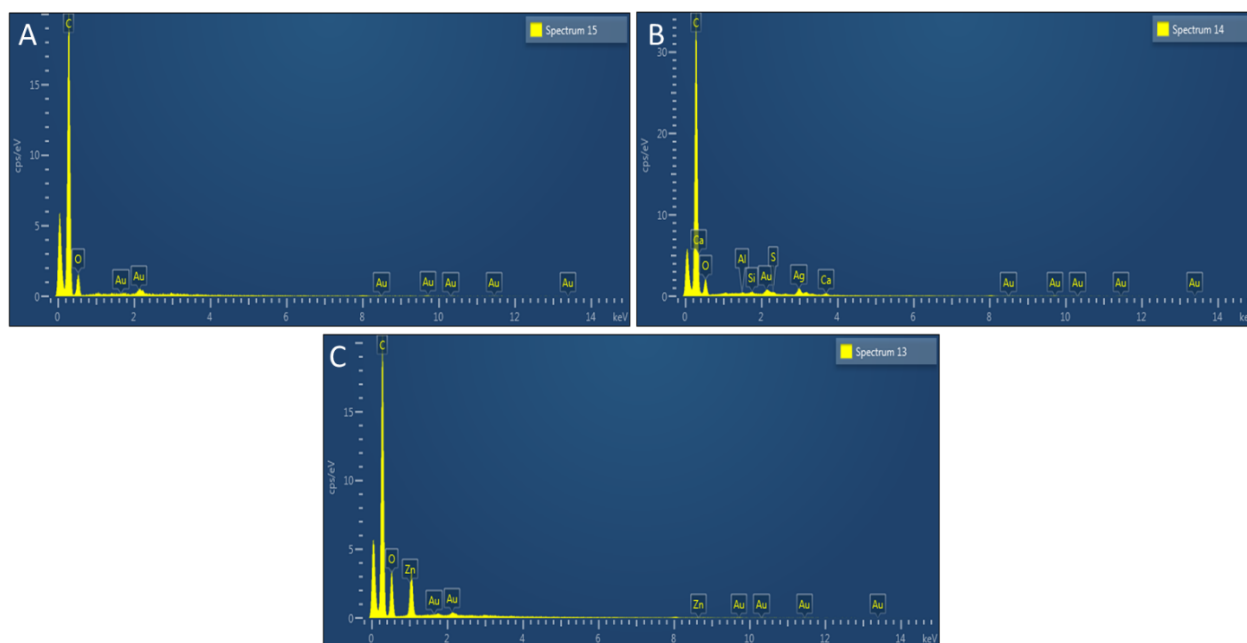


Figure S1. EDX spectra of (A) GO/CC, (B) SF/CC, and (C) C2/CC representing the elemental composition

Results

	Size (d.nm):	% Intensity:	St Dev (d.n...)
Z-Average (d.nm): 1361	Peak 1: 604.4	84.7	88.26
Pdl: 0.972	Peak 2: 8.169	9.5	1.063
Intercept: 1.02	Peak 3: 108.0	5.8	11.23

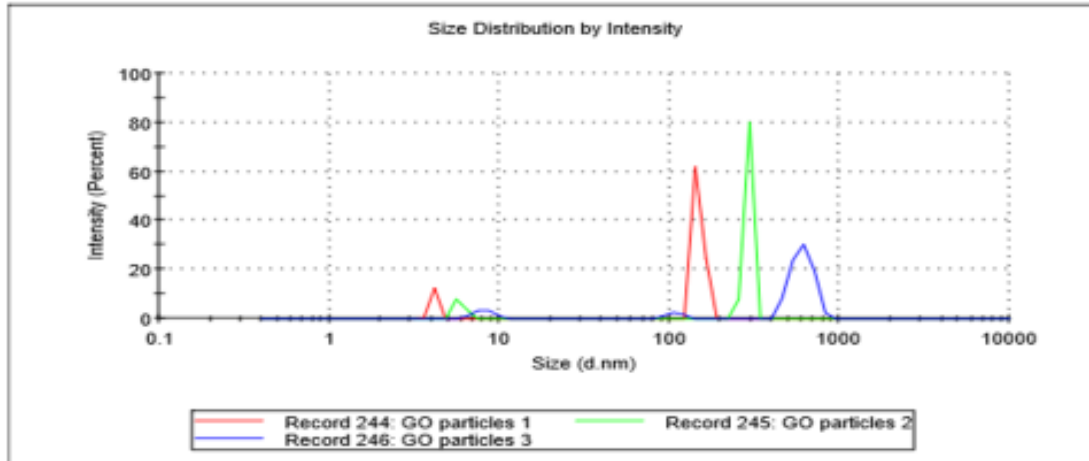


Figure S2. Particle size analysis of GO suspension by DLS

Results

	Mean (mV)	Area (%)	St Dev (mV)
Zeta Potential (mV): -8.42	Peak 1: -8.42	100.0	4.42
Zeta Deviation (mV): 4.42	Peak 2: 0.00	0.0	0.00
Conductivity (mS/cm): 0.0657	Peak 3: 0.00	0.0	0.00

Result quality : **Good**

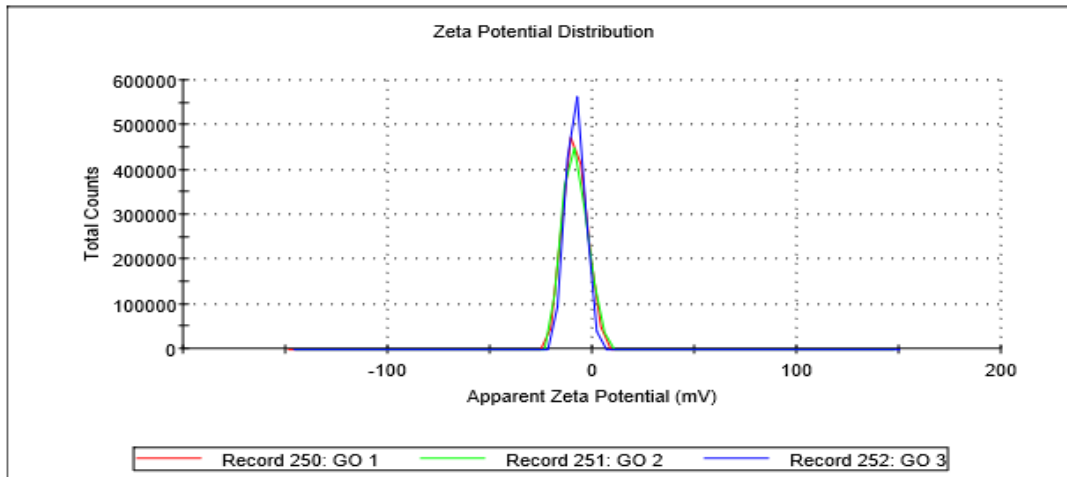


Figure S3. Zeta potential measurement of GO suspension by DLS

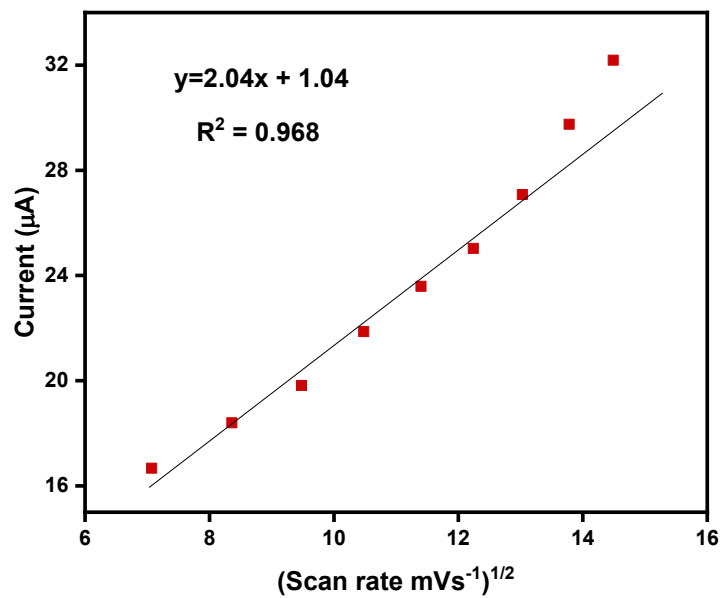


Figure S4. Linear relationship between square root of scan rate and anodic peak current