

HPLC Traces

HPLC Method:

Time/min	Acetonitrile/%	Water/%
0.0	5	95
3.0	50	50
6.0	0	100
6.5	0	100
7.5	5	95
8.5	5	95

Peaks:

Compound	Retention time (RT)
Bromobenzene	4.51 min
1,3,5-trimethoxybenzene (Internal standard)	3.86 min

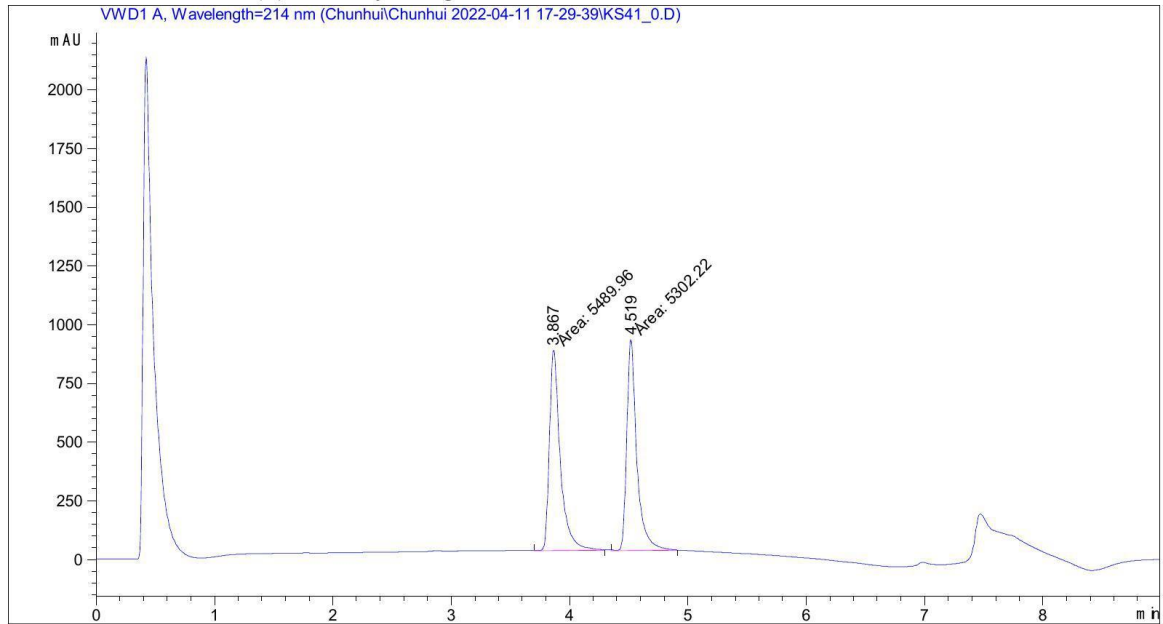
The product (phenylboronic acid pinacol ester) is unstable in the acid HPLC sample solution, will degrade to phenylboronic acid derivatives. Thus, only bromobenzene and internal standard (1,3,5-trimethoxybenzene) is labeled in the HPLC traces.

Figure 9 – Borylation reaction with 0.5 mol% catalyst loading under Argon

Data File C:\Chem32\1\Data\Chunhui\Chunhui 2022-04-11 17-29-39\KS41_0.D
 Sample Name: KS41_0

```

=====
Acq. Operator   : SYSTEM                      Seq. Line :    2
Acq. Instrument : Timon HPLC                  Location  :   11
Injection Date  : 11/04/2022 17:41:26       Inj       :    1
                                                Inj Volume: 5.000 µl
Method          : C:\Chem32\1\Data\Chunhui\Chunhui 2022-04-11 17-29-39\CY_KS.M (Sequence
                Method)
Last changed    : 11/04/2022 17:29:40 by SYSTEM
Additional Info  : Peak(s) manually integrated
  
```



=====
 Area Percent Report
 =====

```

Sorted By      : Signal
Multiplier     : 1.0000
Dilution       : 1.0000
Use Multiplier & Dilution Factor with ISTDs
  
```

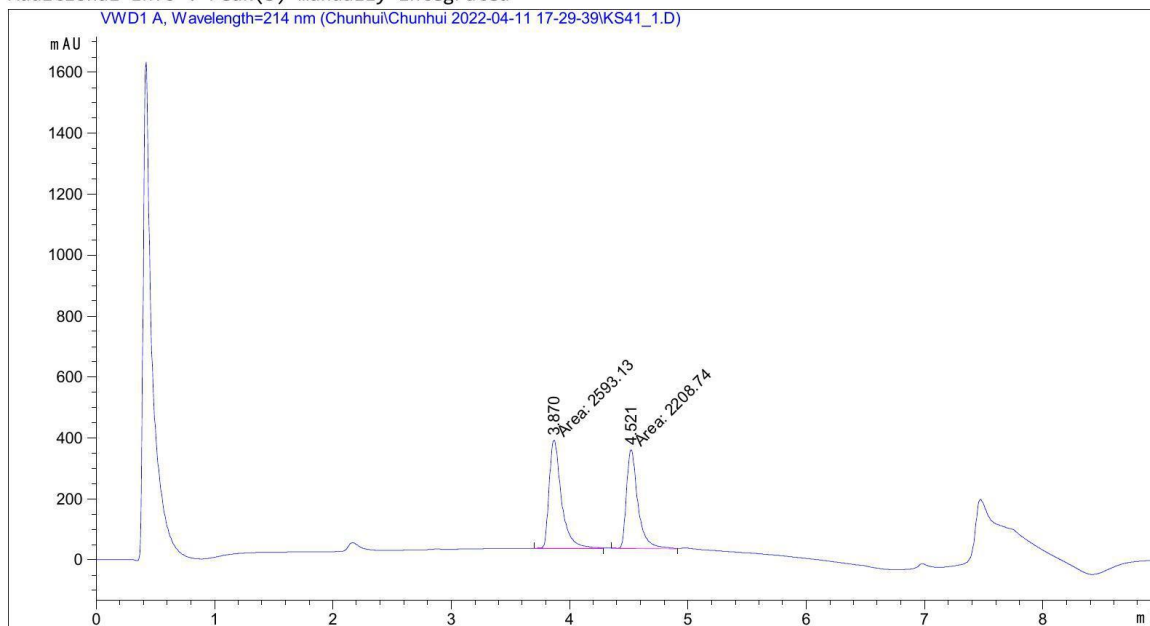
Signal 1: VWD1 A, Wavelength=214 nm

Peak #	RetTime [min]	Type	Width [min]	Area [mAU*s]	Height [mAU]	Area %
1	3.867	MM	0.1070	5489.95508	855.09387	50.8698
2	4.519	MM	0.0983	5302.21680	899.28589	49.1302

Totals : 1.07922e4 1754.37976

=====
 *** End of Report ***

```
=====
Acq. Operator   : SYSTEM                      Seq. Line :    3
Acq. Instrument : Timon HPLC                  Location  :   12
Injection Date  : 11/04/2022 17:51:46        Inj       :    1
                                           Inj Volume: 5.000 µl
Method          : C:\Chem32\1\Data\Chunhui\Chunhui 2022-04-11 17-29-39\CY_KS.M (Sequence
Method)
Last changed    : 11/04/2022 17:29:40 by SYSTEM
Additional Info  : Peak(s) manually integrated
=====
```



```
=====
                          Area Percent Report
=====
```

```
Sorted By      : Signal
Multiplier     : 1.0000
Dilution       : 1.0000
Use Multiplier & Dilution Factor with ISTDs
```

Signal 1: VWD1 A, Wavelength=214 nm

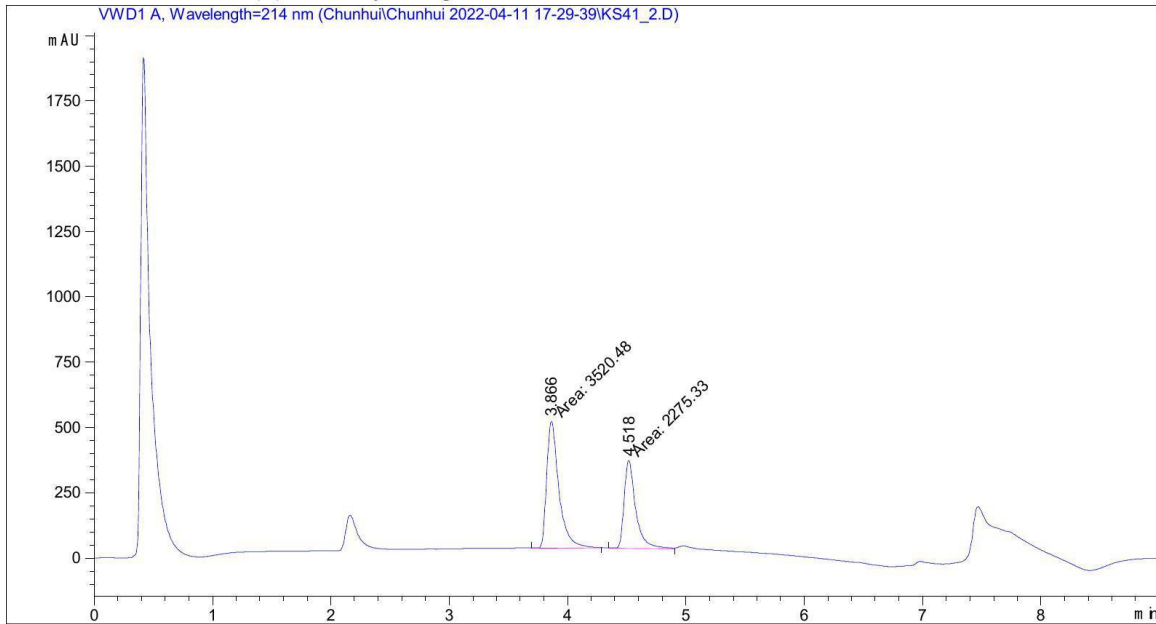
Peak #	RetTime [min]	Type	Width [min]	Area [mAU*s]	Height [mAU]	Area %
1	3.870	MM	0.1214	2593.13086	356.12320	54.0026
2	4.521	MM	0.1132	2208.73535	325.08347	45.9974

```
Totals :                      4801.86621  681.20667
```

```
=====
*** End of Report ***
```

```

=====
Acq. Operator   : SYSTEM                      Seq. Line :    4
Acq. Instrument : Timon HPLC                  Location  :   13
Injection Date  : 11/04/2022 18:02:06       Inj       :    1
                                           Inj Volume: 5.000 µl
Method         : C:\Chem32\1\Data\Chunhui\Chunhui 2022-04-11 17-29-39\CY_KS.M (Sequence
                Method)
Last changed    : 11/04/2022 17:29:40 by SYSTEM
Additional Info  : Peak(s) manually integrated
  
```



=====
 Area Percent Report
 =====

```

Sorted By      :      Signal
Multiplier     :      1.0000
Dilution       :      1.0000
Use Multiplier & Dilution Factor with ISTDs
  
```

Signal 1: VWD1 A, Wavelength=214 nm

Peak #	RetTime [min]	Type	Width [min]	Area [mAU*s]	Height [mAU]	Area %
1	3.866	MM	0.1208	3520.47656	485.58243	60.7417
2	4.518	MM	0.1129	2275.33472	335.99689	39.2583

Totals : 5795.81128 821.57932

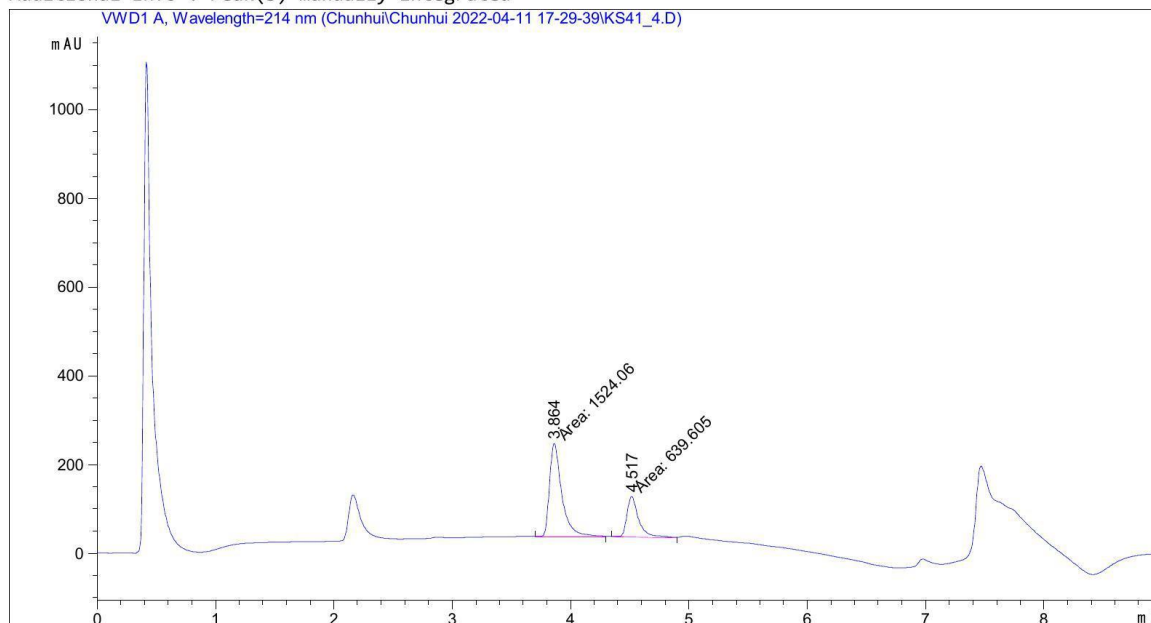
=====
 *** End of Report ***

Data File C:\Chem32\1\Data\Chunhui\Chunhui 2022-04-11 17-29-39\KS41_4.D
Sample Name: KS41_4

=====

Acq. Operator	: SYSTEM	Seq. Line	: 7
Acq. Instrument	: Timon HPLC	Location	: 15
Injection Date	: 11/04/2022 18:33:08	Inj	: 1
		Inj Volume	: 5.000 µl

Method : C:\Chem32\1\Data\Chunhui\Chunhui 2022-04-11 17-29-39\CY_KS.M (Sequence Method)
Last changed : 11/04/2022 17:29:40 by SYSTEM
Additional Info : Peak(s) manually integrated



=====

Area Percent Report

=====

Sorted By	:	Signal
Multiplier	:	1.0000
Dilution	:	1.0000

Use Multiplier & Dilution Factor with ISTDs

Signal 1: VWD1 A, Wavelength=214 nm

Peak #	RetTime [min]	Type	Width [min]	Area [mAU*s]	Height [mAU]	Area %
1	3.864	MM	0.1211	1524.06360	209.74847	70.4389
2	4.517	MM	0.1164	639.60516	91.58849	29.5611

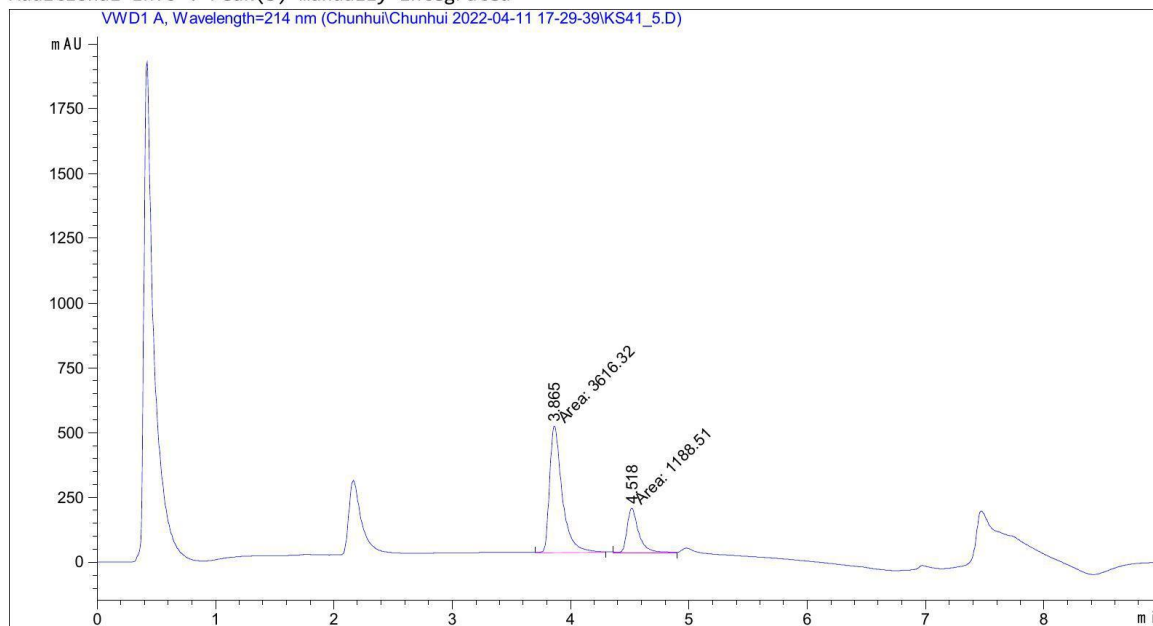
Totals : 2163.66876 301.33696

=====

*** End of Report ***

```

=====
Acq. Operator   : SYSTEM                      Seq. Line :    8
Acq. Instrument : Timon HPLC                 Location  :   16
Injection Date  : 11/04/2022 18:43:29       Inj       :    1
                                           Inj Volume: 5.000 µl
Method         : C:\Chem32\1\Data\Chunhui\Chunhui 2022-04-11 17-29-39\CY_KS.M (Sequence
Method)
Last changed   : 11/04/2022 17:29:40 by SYSTEM
Additional Info : Peak(s) manually integrated
  
```



=====
 Area Percent Report
 =====

```

Sorted By      : Signal
Multiplier     : 1.0000
Dilution      : 1.0000
Use Multiplier & Dilution Factor with ISTDs
  
```

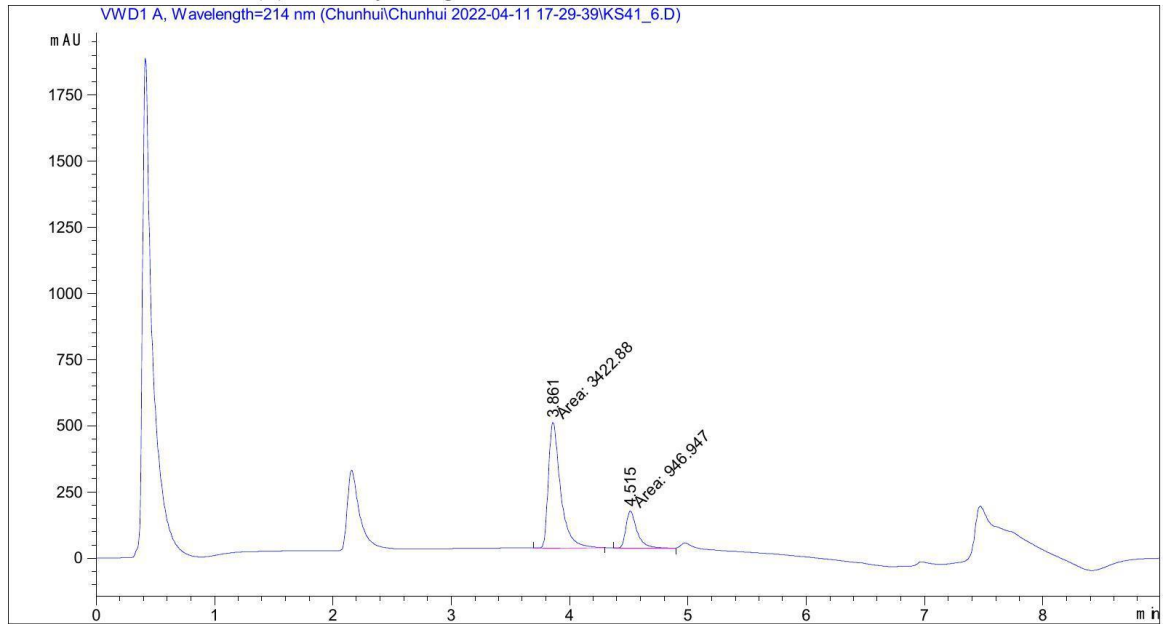
Signal 1: VWD1 A, Wavelength=214 nm

Peak #	RetTime [min]	Type	Width [min]	Area [mAU*s]	Height [mAU]	Area %
1	3.865	MM	0.1234	3616.32349	488.32648	75.2643
2	4.518	MM	0.1154	1188.50659	171.64297	24.7357

Totals : 4804.83008 659.96945

=====
 *** End of Report ***

```
=====
Acq. Operator   : SYSTEM                      Seq. Line :    9
Acq. Instrument : Timon HPLC                  Location  :   17
Injection Date  : 11/04/2022 18:53:49        Inj       :    1
                                           Inj Volume: 5.000 µl
Method          : C:\Chem32\1\Data\Chunhui\Chunhui 2022-04-11 17-29-39\CY_KS.M (Sequence
                  Method)
Last changed    : 11/04/2022 17:29:40 by SYSTEM
Additional Info : Peak(s) manually integrated
=====
```



=====
Area Percent Report
=====

Sorted By : Signal
Multiplier : 1.0000
Dilution : 1.0000
Use Multiplier & Dilution Factor with ISTDs

Signal 1: VWD1 A, Wavelength=214 nm

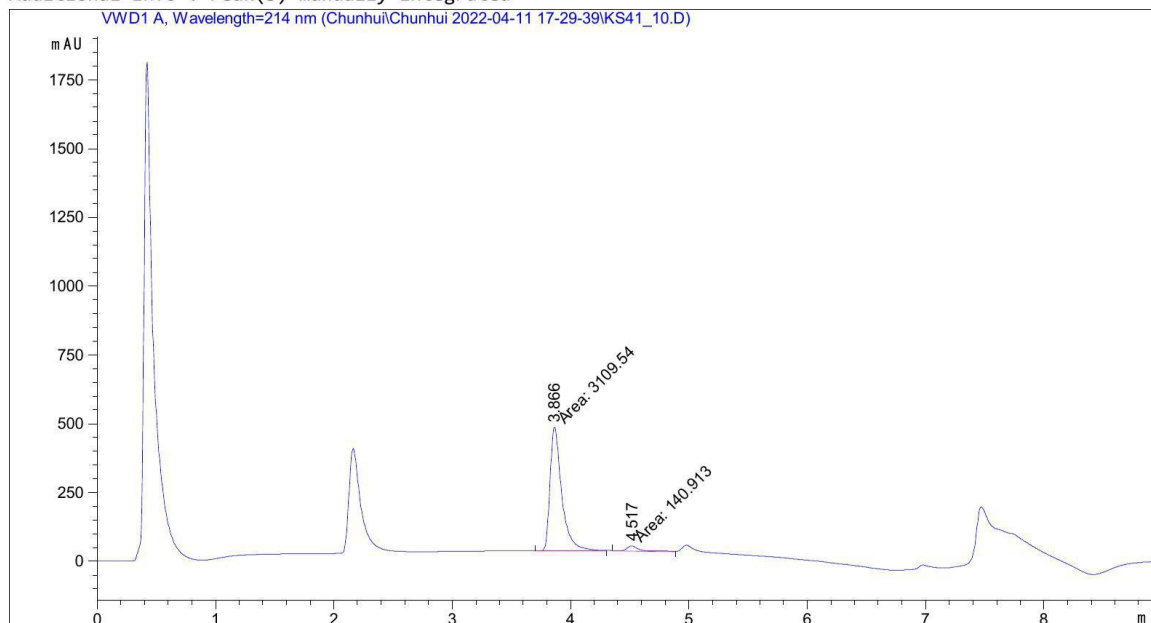
Peak #	RetTime [min]	Type	Width [min]	Area [mAU*s]	Height [mAU]	Area %
1	3.861	MM	0.1198	3422.88306	476.04437	78.3299
2	4.515	MM	0.1119	946.94714	141.03406	21.6701

Totals : 4369.83020 617.07843

=====
*** End of Report ***


```

=====
Acq. Operator   : SYSTEM                      Seq. Line :   14
Acq. Instrument : Timon HPLC                  Location  :   21
Injection Date  : 11/04/2022 19:45:40       Inj       :    1
                                           Inj Volume: 5.000 µl
Method         : C:\Chem32\1\Data\Chunhui\Chunhui 2022-04-11 17-29-39\CY_KS.M (Sequence
                Method)
Last changed    : 11/04/2022 17:29:40 by SYSTEM
Additional Info : Peak(s) manually integrated
  
```



=====
 Area Percent Report
 =====

```

Sorted By      :      Signal
Multiplier     :      1.0000
Dilution       :      1.0000
Use Multiplier & Dilution Factor with ISTDs
  
```

Signal 1: VWD1 A, Wavelength=214 nm

Peak #	RetTime [min]	Type	Width [min]	Area [mAU*s]	Height [mAU]	Area %
1	3.866	MM	0.1153	3109.54443	449.30341	95.6648
2	4.517	MM	0.1245	140.91266	18.85712	4.3352

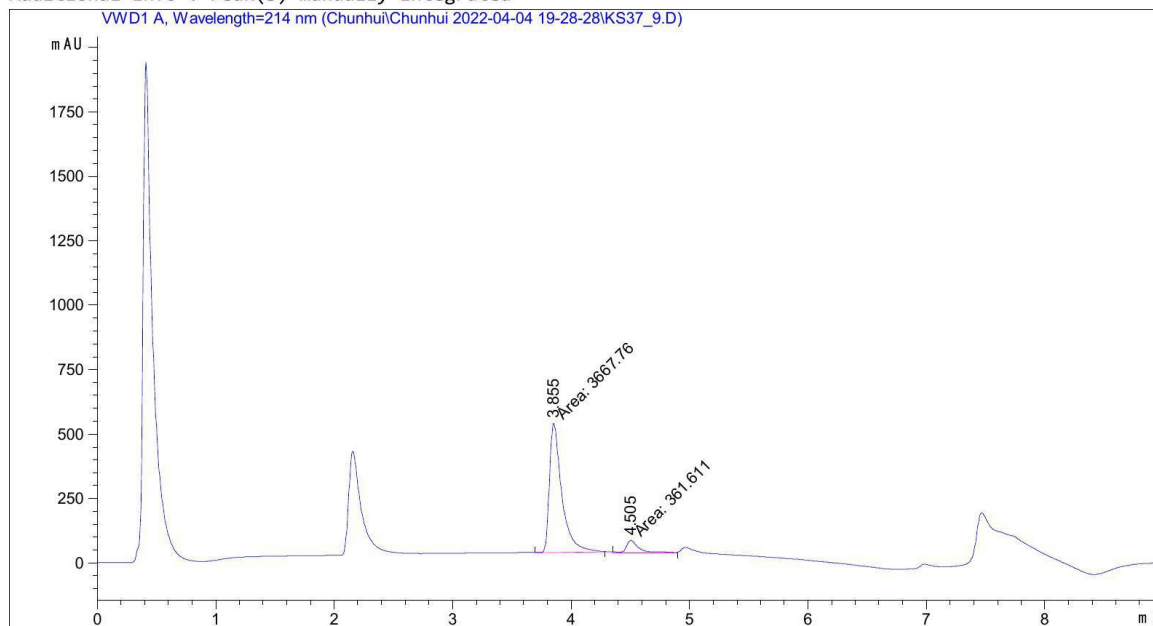
Totals : 3250.45709 468.16052

=====
 *** End of Report ***

Figure 9 – Borylation reaction with 0.5 mol% catalyst loading under Nitrogen

```

=====
Acq. Operator   : SYSTEM                      Seq. Line : 12
Acq. Instrument : Timon HPLC                  Location  : 70
Injection Date  : 04/04/2022 21:23:24        Inj       : 1
                                           Inj Volume: 5.000 µl
Method          : C:\Chem32\1\Data\Chunhui\Chunhui 2022-04-04 19-28-28\CY_KS.M (Sequence
                Method)
Last changed    : 04/04/2022 19:28:29 by SYSTEM
Additional Info  : Peak(s) manually integrated
  
```



=====
 Area Percent Report
 =====

```

Sorted By      : Signal
Multiplier     : 1.0000
Dilution       : 1.0000
Use Multiplier & Dilution Factor with ISTDs
  
```

Signal 1: VWD1 A, Wavelength=214 nm

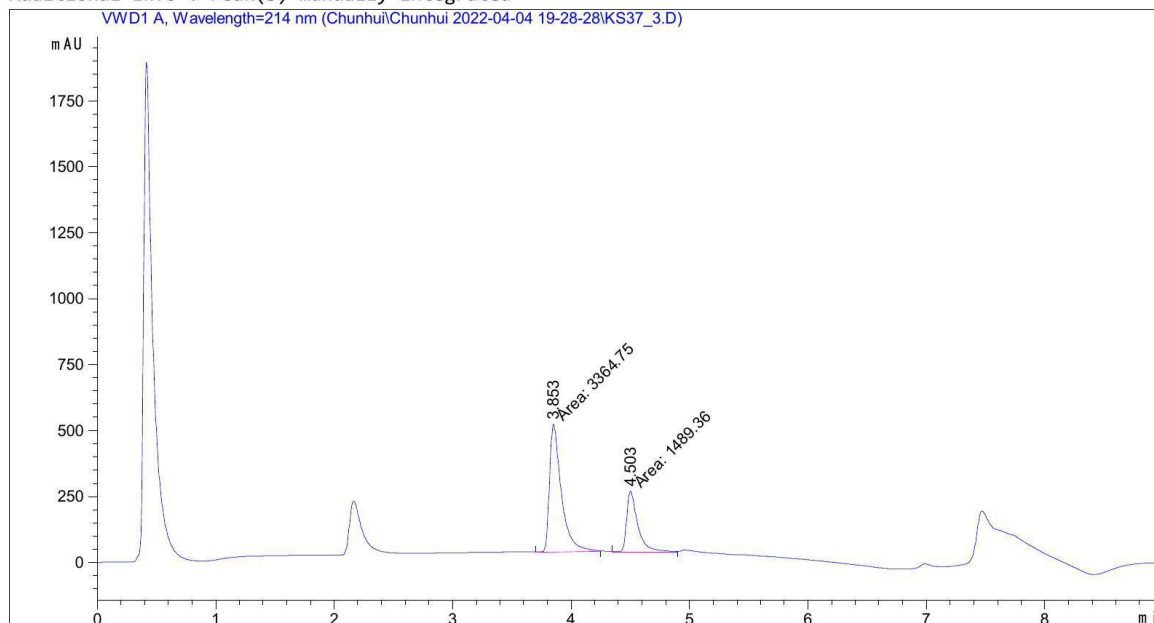
Peak #	RetTime [min]	Type	Width [min]	Area [mAU*s]	Height [mAU]	Area %
1	3.855	MM	0.1214	3667.75562	503.39334	91.0256
2	4.505	MM	0.1250	361.61118	48.22803	8.9744

Totals : 4029.36679 551.62137

=====
 *** End of Report ***


```

=====
Acq. Operator   : SYSTEM                      Seq. Line :    5
Acq. Instrument : Timon HPLC                  Location  :   64
Injection Date  : 04/04/2022 20:10:48        Inj       :    1
                                           Inj Volume: 5.000 µl
Method          : C:\Chem32\1\Data\Chunhui\Chunhui 2022-04-04 19-28-28\CY_KS.M (Sequence
                : Method)
Last changed    : 04/04/2022 19:28:29 by SYSTEM
Additional Info  : Peak(s) manually integrated
  
```



=====
 Area Percent Report
 =====

```

Sorted By      : Signal
Multiplier     : 1.0000
Dilution      : 1.0000
Use Multiplier & Dilution Factor with ISTDs
  
```

Signal 1: VWD1 A, Wavelength=214 nm

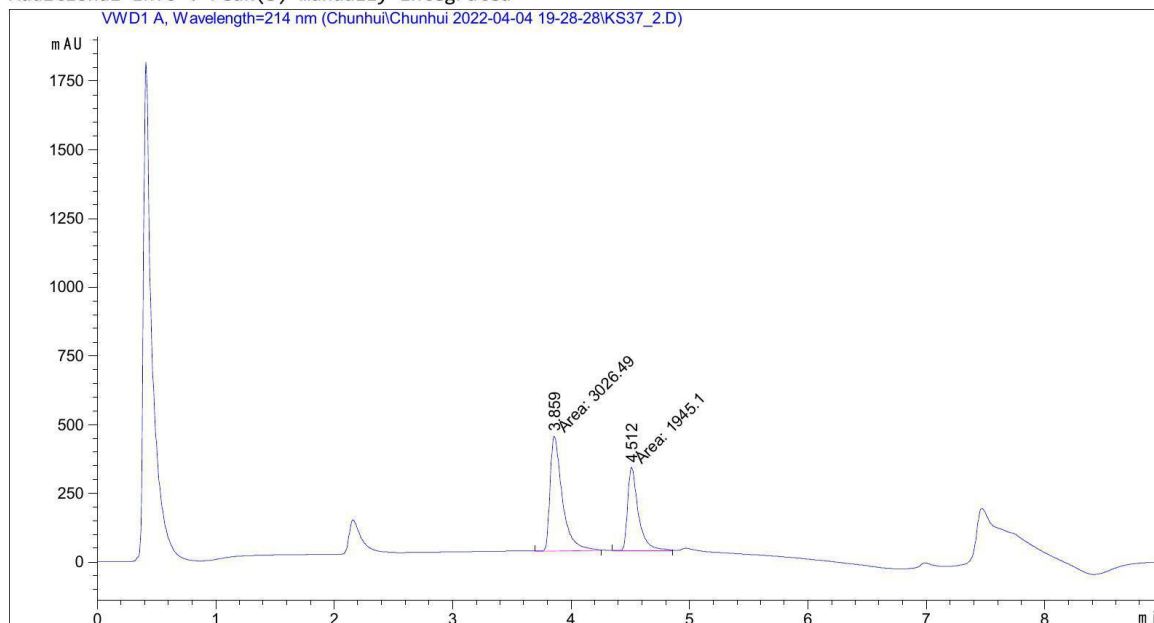
Peak #	RetTime [min]	Type	Width [min]	Area [mAU*s]	Height [mAU]	Area %
1	3.853	MM	0.1160	3364.74756	483.38730	69.3175
2	4.503	MM	0.1079	1489.36377	230.13171	30.6825

Totals : 4854.11133 713.51901

=====
 *** End of Report ***

```

=====
Acq. Operator   : SYSTEM                      Seq. Line :    4
Acq. Instrument : Timon HPLC                  Location  :   63
Injection Date  : 04/04/2022 20:00:27        Inj       :    1
                                           Inj Volume: 5.000 µl
Method          : C:\Chem32\1\Data\Chunhui\Chunhui 2022-04-04 19-28-28\CY_KS.M (Sequence
                Method)
Last changed    : 04/04/2022 19:28:29 by SYSTEM
Additional Info  : Peak(s) manually integrated
  
```



=====
 Area Percent Report
 =====

```

Sorted By      :      Signal
Multiplier     :      1.0000
Dilution      :      1.0000
Use Multiplier & Dilution Factor with ISTDs
  
```

Signal 1: VWD1 A, Wavelength=214 nm

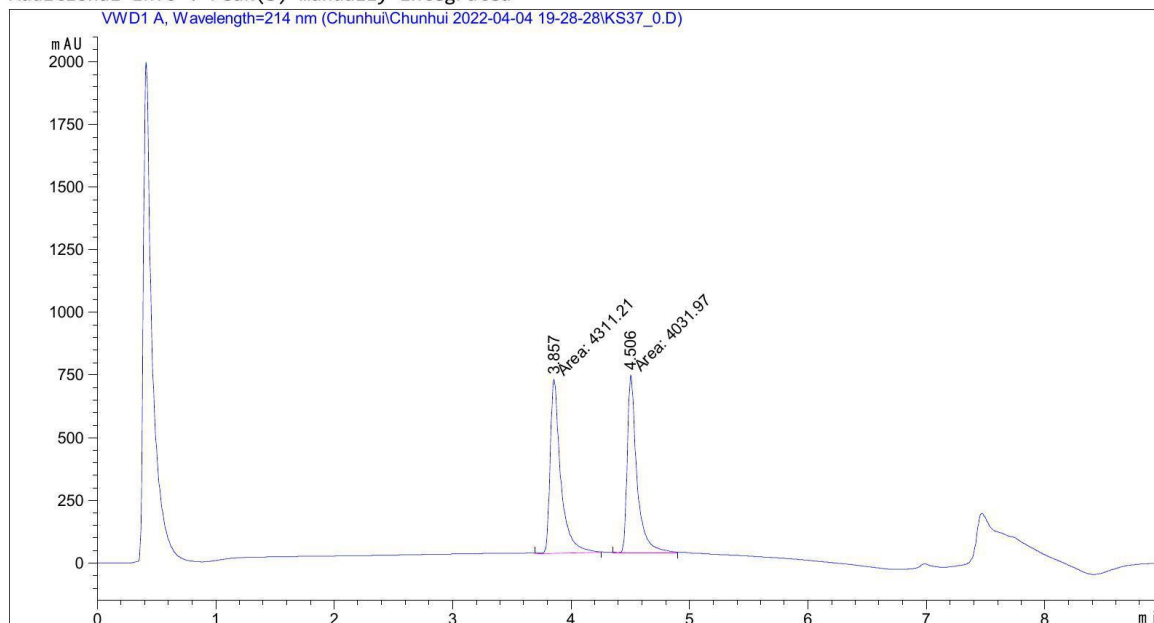
Peak #	RetTime [min]	Type	Width [min]	Area [mAU*s]	Height [mAU]	Area %
1	3.859	MM	0.1206	3026.49292	418.28613	60.8757
2	4.512	MM	0.1064	1945.09839	304.58002	39.1243

Totals : 4971.59131 722.86615

=====
 *** End of Report ***


```

=====
Acq. Operator   : SYSTEM                      Seq. Line :    2
Acq. Instrument : Timon HPLC                  Location  :   61
Injection Date  : 04/04/2022 19:39:43       Inj       :    1
                                           Inj Volume: 5.000 µl
Method         : C:\Chem32\1\Data\Chunhui\Chunhui 2022-04-04 19-28-28\CY_KS.M (Sequence
                Method)
Last changed    : 04/04/2022 19:28:29 by SYSTEM
Additional Info : Peak(s) manually integrated
  
```



=====
 Area Percent Report
 =====

```

Sorted By      :      Signal
Multiplier     :      1.0000
Dilution      :      1.0000
Use Multiplier & Dilution Factor with ISTDs
  
```

Signal 1: VWD1 A, Wavelength=214 nm

Peak #	RetTime [min]	Type	Width [min]	Area [mAU*s]	Height [mAU]	Area %
1	3.857	MM	0.1035	4311.21436	694.40619	51.6735
2	4.506	MM	0.0946	4031.96948	710.20667	48.3265

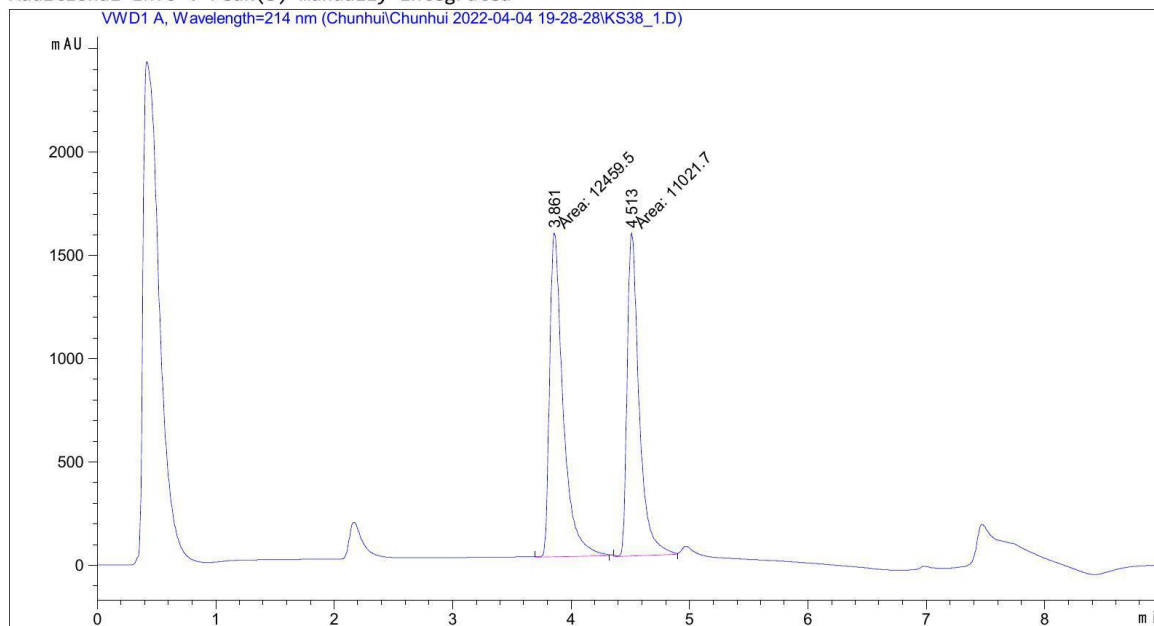
Totals : 8343.18384 1404.61285

=====
 *** End of Report ***

Figure 9 – Borylation reaction with 0.5 mol% catalyst loading and exposed to air


```

=====
Acq. Operator   : SYSTEM                      Seq. Line :   16
Acq. Instrument : Timon HPLC                 Location  :    73
Injection Date  : 04/04/2022 22:04:57       Inj       :    1
                                           Inj Volume: 5.000 µl
Method         : C:\Chem32\1\Data\Chunhui\Chunhui 2022-04-04 19-28-28\CY_KS.M (Sequence
                Method)
Last changed    : 04/04/2022 19:28:29 by SYSTEM
Additional Info : Peak(s) manually integrated
  
```



=====
 Area Percent Report
 =====

```

Sorted By      :      Signal
Multiplier     :      1.0000
Dilution      :      1.0000
Use Multiplier & Dilution Factor with ISTDs
  
```

Signal 1: VWD1 A, Wavelength=214 nm

Peak #	RetTime [min]	Type	Width [min]	Area [mAU*s]	Height [mAU]	Area %
1	3.861	MM	0.1323	1.24595e4	1569.94812	53.0615
2	4.513	MM	0.1174	1.10217e4	1564.63013	46.9385

Totals : 2.34812e4 3134.57825

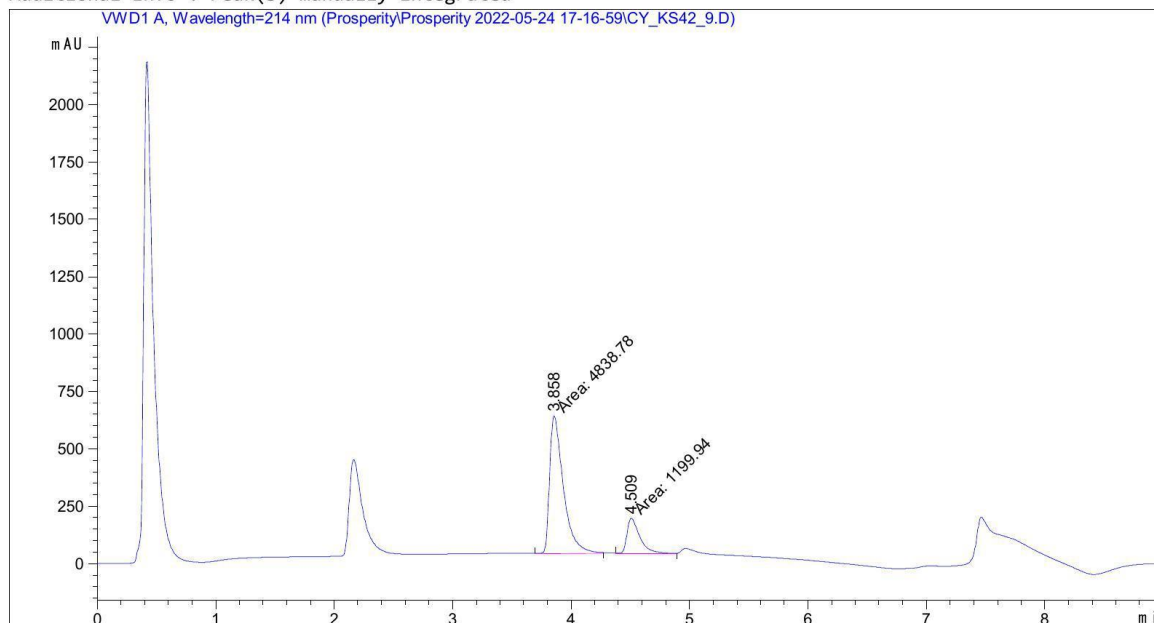
=====
 *** End of Report ***

Figure 10 – Borylation reaction with 0.2 mol% catalyst loading under Argon

```

=====
Acq. Operator   : SYSTEM                      Seq. Line :   20
Acq. Instrument : Timon HPLC                  Location  :   20
Injection Date  : 24/05/2022 21:47:16        Inj       :    1
                                           Inj Volume: 5.000 µl

Method         : C:\Chem32\1\Data\Prosperity\Prosperity 2022-05-24 17-16-59\CY_KS.M (
                Sequence Method)
Last changed   : 24/05/2022 18:23:51 by SYSTEM
Additional Info: Peak(s) manually integrated
  
```



=====
 Area Percent Report
 =====

```

Sorted By      :      Signal
Multiplier     :      1.0000
Dilution       :      1.0000
Use Multiplier & Dilution Factor with ISTDs
  
```

Signal 1: VWD1 A, Wavelength=214 nm

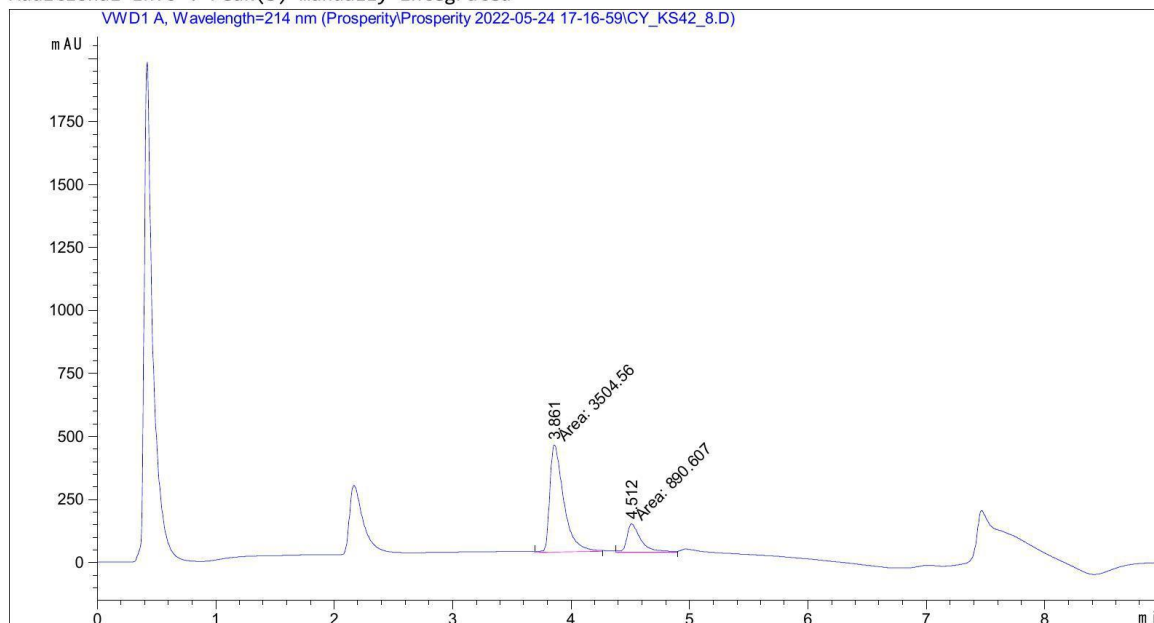
Peak #	RetTime [min]	Type	Width [min]	Area [mAU*s]	Height [mAU]	Area %
1	3.858	MM	0.1344	4838.78174	600.08698	80.1293
2	4.509	MM	0.1293	1199.93762	154.68846	19.8707

Totals : 6038.71936 754.77544

=====
 *** End of Report ***

```

=====
Acq. Operator   : SYSTEM                      Seq. Line :   19
Acq. Instrument : Timon HPLC                 Location  :   19
Injection Date  : 24/05/2022 21:36:51       Inj       :    1
                                           Inj Volume: 5.000 µl
Method         : C:\Chem32\1\Data\Prosperity\Prosperity 2022-05-24 17-16-59\CY_KS.M (
                Sequence Method)
Last changed   : 24/05/2022 18:23:51 by SYSTEM
Additional Info: Peak(s) manually integrated
  
```



=====
 Area Percent Report
 =====

```

Sorted By      :      Signal
Multiplier     :      1.0000
Dilution       :      1.0000
Use Multiplier & Dilution Factor with ISTDs
  
```

Signal 1: VWD1 A, Wavelength=214 nm

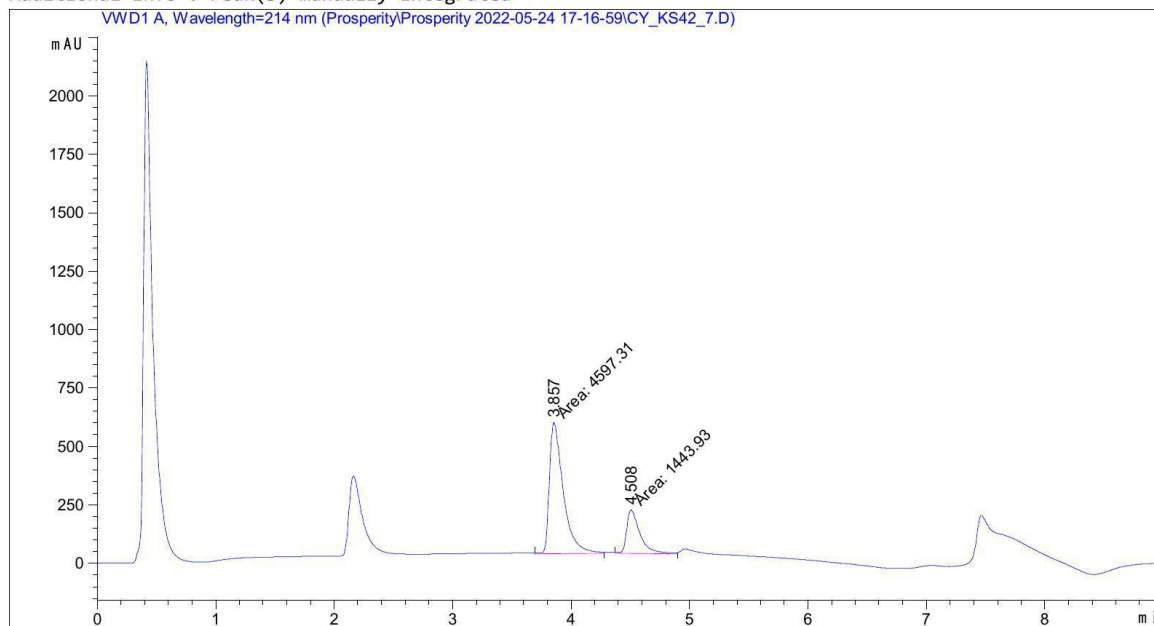
Peak #	RetTime [min]	Type	Width [min]	Area [mAU*s]	Height [mAU]	Area %
1	3.861	MM	0.1371	3504.55957	425.98560	79.7367
2	4.512	MM	0.1337	890.60712	110.99963	20.2633

Totals : 4395.16669 536.98522

=====
 *** End of Report ***

```

=====
Acq. Operator   : SYSTEM                      Seq. Line :   18
Acq. Instrument : Timon HPLC                  Location  :   18
Injection Date  : 24/05/2022 21:26:29        Inj       :    1
                                           Inj Volume: 5.000 µl
Method         : C:\Chem32\1\Data\Prosperity\Prosperity 2022-05-24 17-16-59\CY_KS.M (
                Sequence Method)
Last changed    : 24/05/2022 18:23:51 by SYSTEM
Additional Info  : Peak(s) manually integrated
  
```



=====
 Area Percent Report
 =====

```

Sorted By      :      Signal
Multiplier     :      1.0000
Dilution      :      1.0000
Use Multiplier & Dilution Factor with ISTDs
  
```

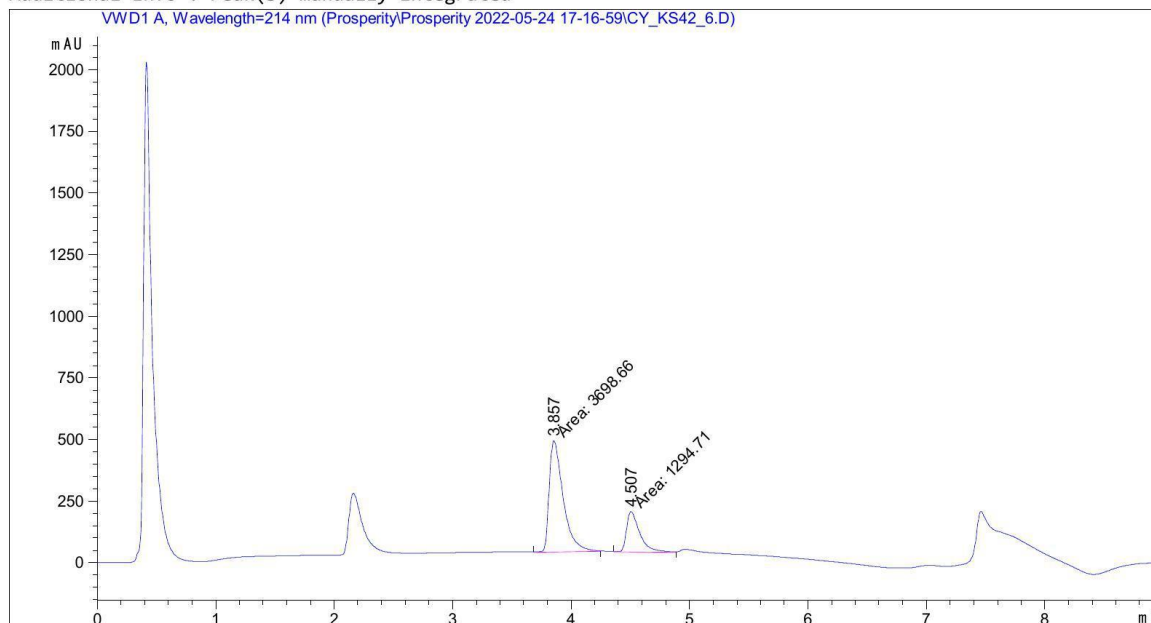
Signal 1: VWD1 A, Wavelength=214 nm

Peak #	RetTime [min]	Type	Width [min]	Area [mAU*s]	Height [mAU]	Area %
1	3.857	MM	0.1362	4597.30908	562.39502	76.0987
2	4.508	MM	0.1290	1443.93445	186.53908	23.9013

Totals : 6041.24353 748.93410

=====
 *** End of Report ***


```
=====
Acq. Operator   : SYSTEM                      Seq. Line :   17
Acq. Instrument : Timon HPLC                 Location  :   17
Injection Date  : 24/05/2022 21:16:09       Inj       :    1
                                           Inj Volume: 5.000 µl
Method          : C:\Chem32\1\Data\Prosperity\Prosperity 2022-05-24 17-16-59\CY_KS.M (
                : Sequence Method)
Last changed    : 24/05/2022 18:23:51 by SYSTEM
Additional Info  : Peak(s) manually integrated
=====
```



```
=====
                          Area Percent Report
=====
```

```
Sorted By           :      Signal
Multiplier          :      1.0000
Dilution            :      1.0000
Use Multiplier & Dilution Factor with ISTDs
```

Signal 1: VWD1 A, Wavelength=214 nm

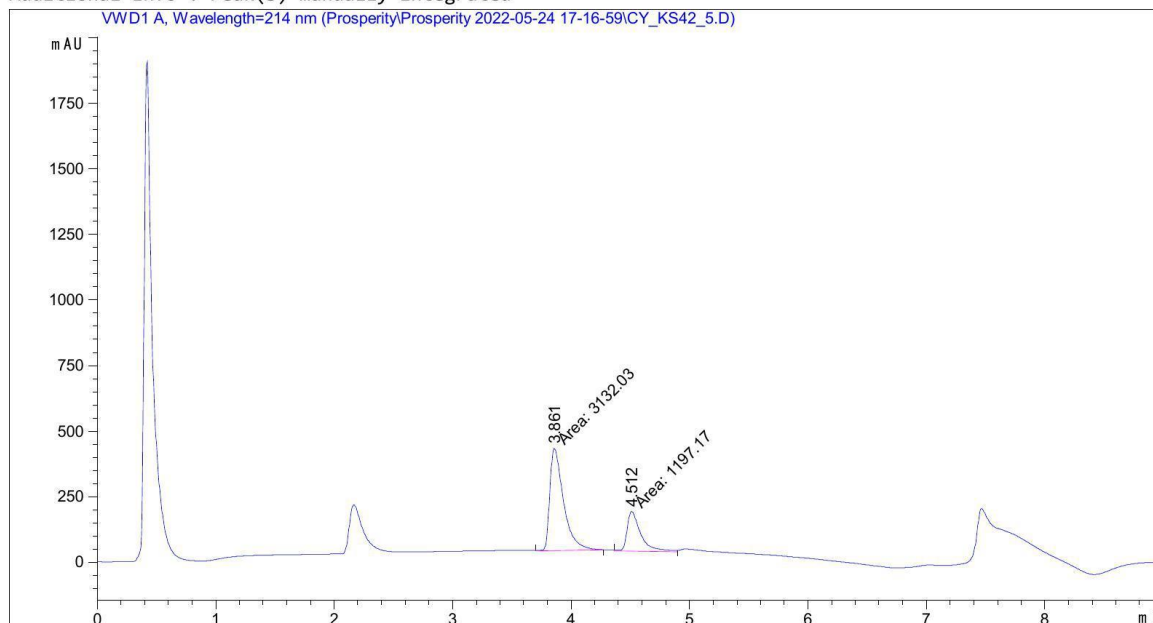
Peak #	RetTime [min]	Type	Width [min]	Area [mAU*s]	Height [mAU]	Area %
1	3.857	MM	0.1365	3698.65576	451.48514	74.0714
2	4.507	MM	0.1310	1294.71008	164.70125	25.9286

Totals : 4993.36584 616.18639

```
=====
*** End of Report ***
=====
```

```

=====
Acq. Operator   : SYSTEM                      Seq. Line : 16
Acq. Instrument : Timon HPLC                  Location  : 16
Injection Date  : 24/05/2022 21:05:49       Inj       : 1
                                           Inj Volume: 5.000 µl
Method          : C:\Chem32\1\Data\Prosperity\Prosperity 2022-05-24 17-16-59\CY_KS.M (
                : Sequence Method)
Last changed    : 24/05/2022 18:23:51 by SYSTEM
Additional Info  : Peak(s) manually integrated
  
```



=====
 Area Percent Report
 =====

```

Sorted By      : Signal
Multiplier     : 1.0000
Dilution      : 1.0000
Use Multiplier & Dilution Factor with ISTDs
  
```

Signal 1: VWD1 A, Wavelength=214 nm

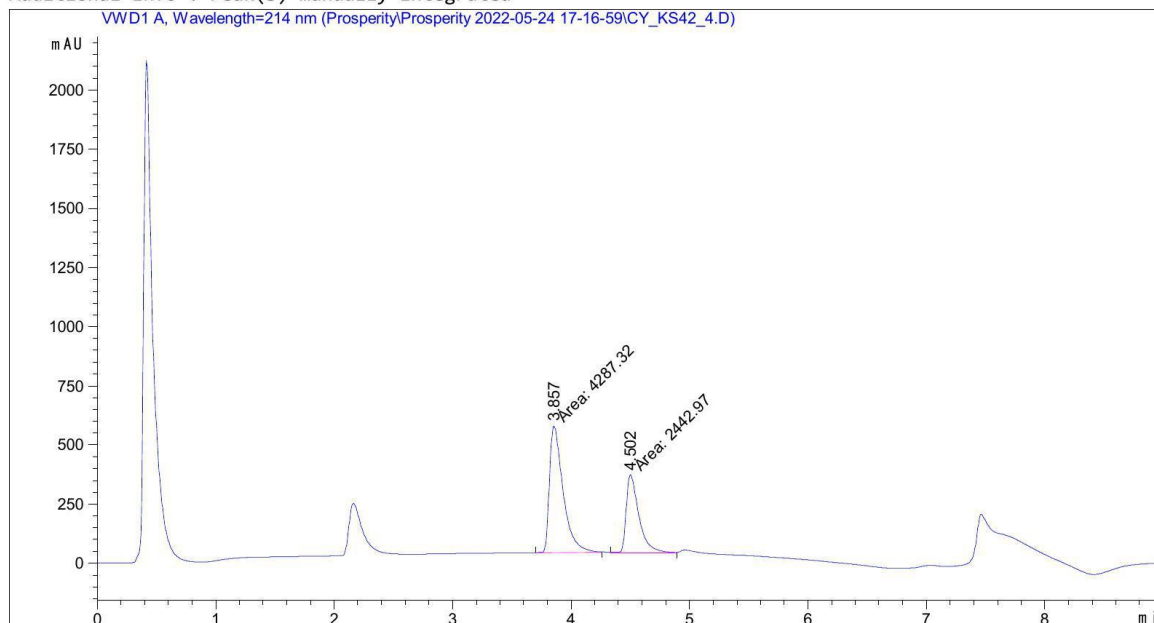
Peak #	RetTime [min]	Type	Width [min]	Area [mAU*s]	Height [mAU]	Area %
1	3.861	MM	0.1342	3132.03345	388.91037	72.3466
2	4.512	MM	0.1326	1197.17261	150.51689	27.6534

Totals : 4329.20605 539.42726

=====
 *** End of Report ***

```

=====
Acq. Operator   : SYSTEM                      Seq. Line :   14
Acq. Instrument : Timon HPLC                  Location  :   15
Injection Date  : 24/05/2022 20:45:03        Inj       :    1
                                           Inj Volume: 5.000 µl
Method         : C:\Chem32\1\Data\Prosperity\Prosperity 2022-05-24 17-16-59\CY_KS.M (
                Sequence Method)
Last changed   : 24/05/2022 18:23:51 by SYSTEM
Additional Info : Peak(s) manually integrated
  
```



=====
 Area Percent Report
 =====

```

Sorted By      :      Signal
Multiplier     :      1.0000
Dilution      :      1.0000
Use Multiplier & Dilution Factor with ISTDs
  
```

Signal 1: VWD1 A, Wavelength=214 nm

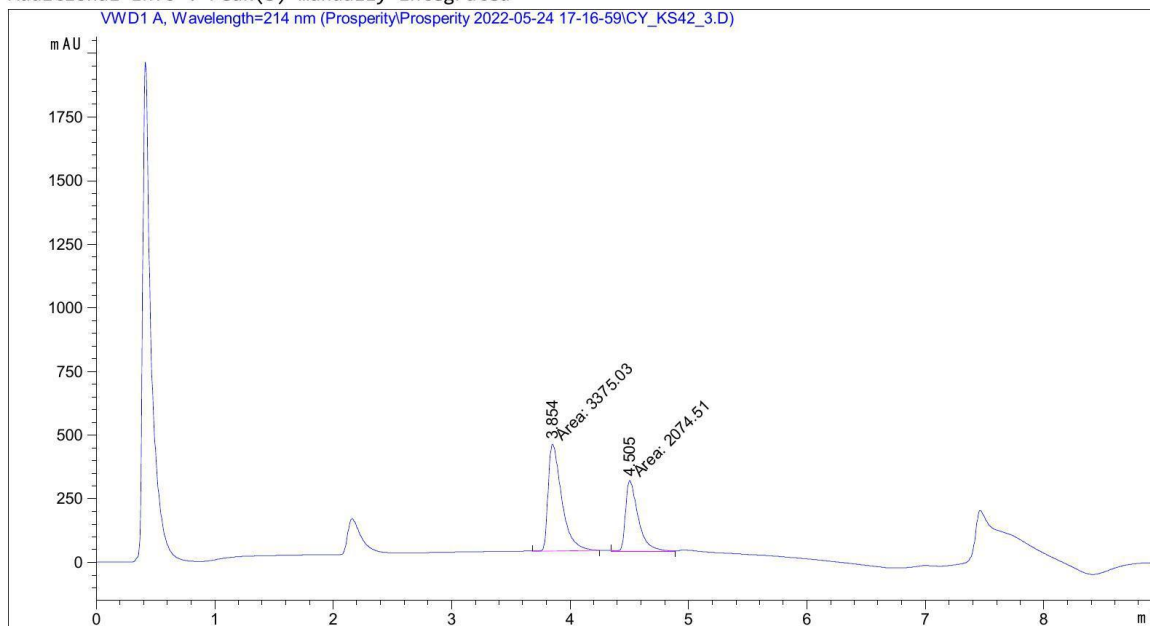
Peak #	RetTime [min]	Type	Width [min]	Area [mAU*s]	Height [mAU]	Area %
1	3.857	MM	0.1334	4287.31885	535.61859	63.7018
2	4.502	MM	0.1233	2442.97363	330.28552	36.2982

Totals : 6730.29248 865.90411

=====
 *** End of Report ***

```

=====
Acq. Operator   : SYSTEM                      Seq. Line :   13
Acq. Instrument : Timon HPLC                  Location  :   14
Injection Date  : 24/05/2022 20:34:44        Inj       :    1
                                           Inj Volume: 5.000 µl
Method         : C:\Chem32\1\Data\Prosperity\Prosperity 2022-05-24 17-16-59\CY_KS.M (
                Sequence Method)
Last changed   : 24/05/2022 18:23:51 by SYSTEM
Additional Info : Peak(s) manually integrated
  
```



=====
 Area Percent Report
 =====

```

Sorted By      :      Signal
Multiplier     :      1.0000
Dilution      :      1.0000
Use Multiplier & Dilution Factor with ISTDs
  
```

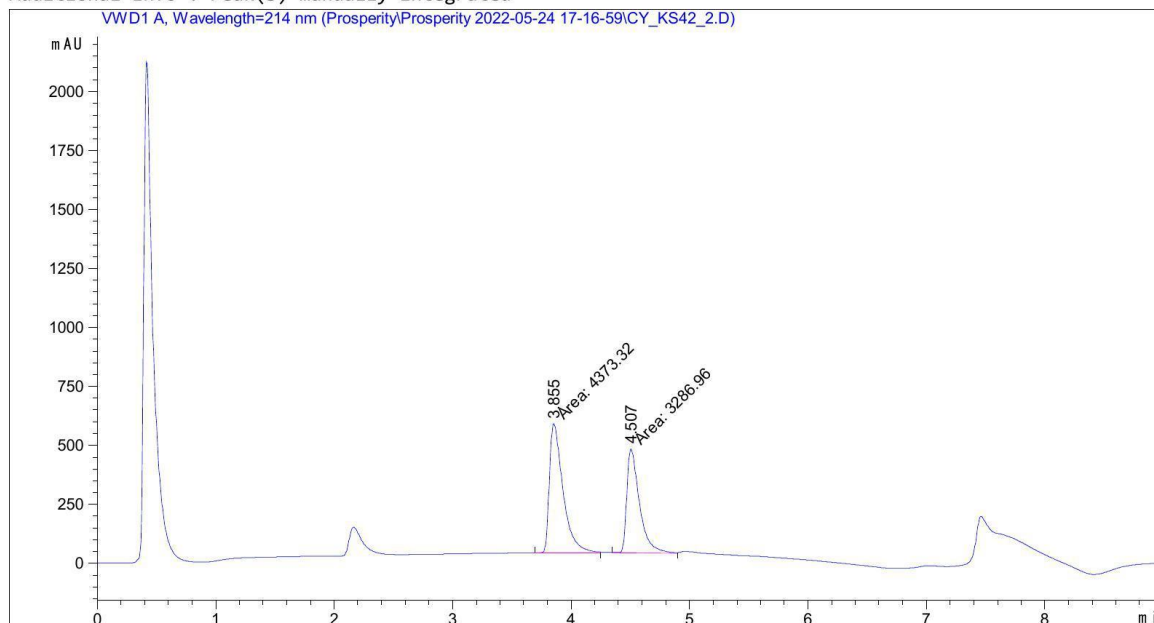
Signal 1: VWD1 A, Wavelength=214 nm

Peak #	RetTime [min]	Type	Width [min]	Area [mAU*s]	Height [mAU]	Area %
1	3.854	MM	0.1334	3375.03003	421.68637	61.9324
2	4.505	MM	0.1241	2074.50513	278.63278	38.0676

Totals : 5449.53516 700.31915

=====
 *** End of Report ***

```
=====
Acq. Operator   : SYSTEM                      Seq. Line : 12
Acq. Instrument : Timon HPLC                  Location  : 13
Injection Date  : 24/05/2022 20:24:24        Inj       : 1
                                                Inj Volume: 5.000 µl
Method          : C:\Chem32\1\Data\Prosperity\Prosperity 2022-05-24 17-16-59\CY_KS.M (
                Sequence Method)
Last changed    : 24/05/2022 18:23:51 by SYSTEM
Additional Info  : Peak(s) manually integrated
=====
```



```
=====
Area Percent Report
=====
```

```
Sorted By      : Signal
Multiplier     : 1.0000
Dilution       : 1.0000
Use Multiplier & Dilution Factor with ISTDs
```

Signal 1: VWD1 A, Wavelength=214 nm

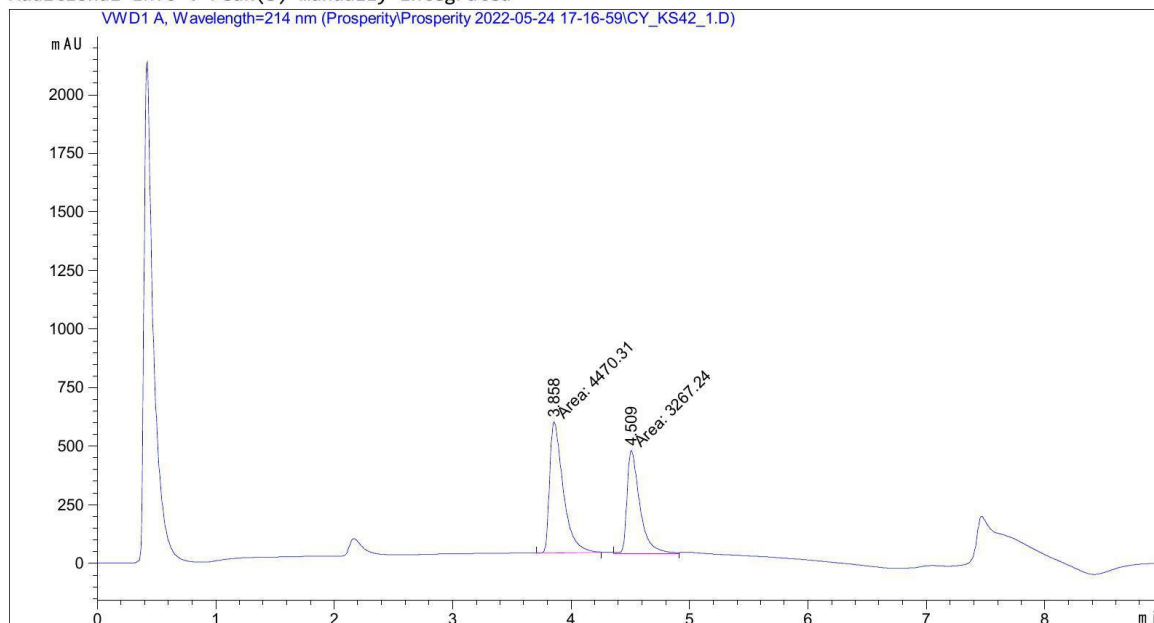
Peak #	RetTime [min]	Type	Width [min]	Area [mAU*s]	Height [mAU]	Area %
1	3.855	MM	0.1327	4373.31787	549.09906	57.0909
2	4.507	MM	0.1239	3286.96021	442.31119	42.9091

```
Totals :                7660.27808  991.41025
```

```
=====
*** End of Report ***
```

```

=====
Acq. Operator   : SYSTEM                      Seq. Line :   11
Acq. Instrument : Timon HPLC                  Location  :   12
Injection Date  : 24/05/2022 20:14:06        Inj       :    1
                                           Inj Volume: 5.000 µl
Method          : C:\Chem32\1\Data\Prosperity\Prosperity 2022-05-24 17-16-59\CY_KS.M (
                : Sequence Method)
Last changed    : 24/05/2022 18:23:51 by SYSTEM
Additional Info  : Peak(s) manually integrated
  
```



=====
 Area Percent Report
 =====

```

Sorted By      : Signal
Multiplier     : 1.0000
Dilution       : 1.0000
Use Multiplier & Dilution Factor with ISTDs
  
```

Signal 1: VWD1 A, Wavelength=214 nm

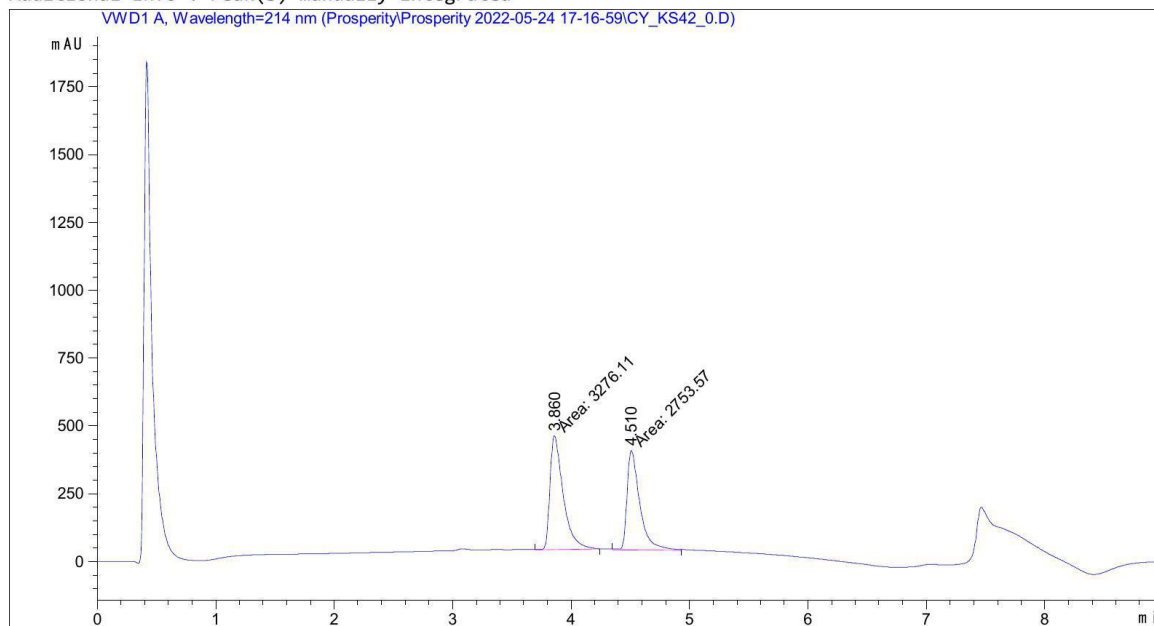
Peak #	RetTime [min]	Type	Width [min]	Area [mAU*s]	Height [mAU]	Area %
1	3.858	MM	0.1331	4470.31348	559.74695	57.7743
2	4.509	MM	0.1241	3267.23755	438.69598	42.2257

Totals : 7737.55103 998.44293

=====
 *** End of Report ***

```

=====
Acq. Operator   : SYSTEM                      Seq. Line :   10
Acq. Instrument : Timon HPLC                  Location  :   11
Injection Date  : 24/05/2022 20:03:45        Inj       :    1
                                           Inj Volume: 5.000 µl
Method         : C:\Chem32\1\Data\Prosperity\Prosperity 2022-05-24 17-16-59\CY_KS.M (
                Sequence Method)
Last changed   : 24/05/2022 18:23:51 by SYSTEM
Additional Info: Peak(s) manually integrated
  
```



=====
 Area Percent Report
 =====

```

Sorted By      :      Signal
Multiplier     :      1.0000
Dilution      :      1.0000
Use Multiplier & Dilution Factor with ISTDs
  
```

Signal 1: VWD1 A, Wavelength=214 nm

Peak #	RetTime [min]	Type	Width [min]	Area [mAU*s]	Height [mAU]	Area %
1	3.860	MM	0.1299	3276.11304	420.18365	54.3331
2	4.510	MM	0.1250	2753.57397	367.09586	45.6669

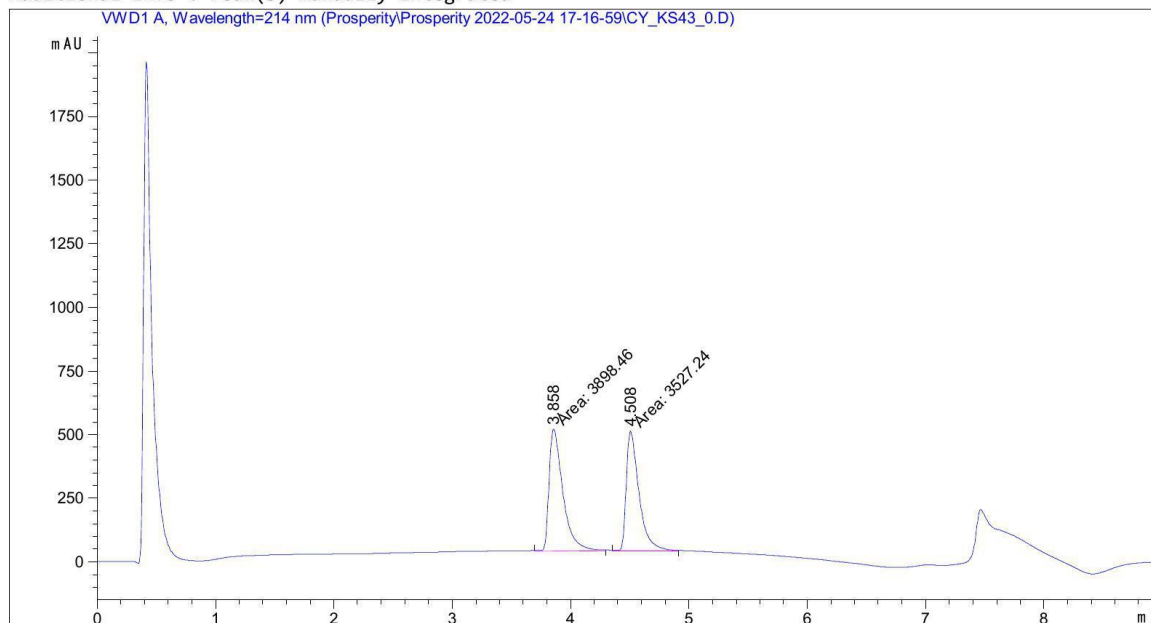
Totals : 6029.68701 787.27951

=====
 *** End of Report ***

Figure 10 – Borylation reaction with 0.2 mol% catalyst loading under Nitrogen

```

=====
Acq. Operator   : SYSTEM                      Seq. Line : 23
Acq. Instrument : Timon HPLC                  Location  : 22
Injection Date  : 24/05/2022 22:18:24        Inj       : 1
                                           Inj Volume: 5.000 µl
Method          : C:\Chem32\1\Data\Prosperity\Prosperity 2022-05-24 17-16-59\CY_KS.M (
                  Sequence Method)
Last changed    : 24/05/2022 18:23:51 by SYSTEM
Additional Info  : Peak(s) manually integrated
  
```



=====
 Area Percent Report
 =====

```

Sorted By      : Signal
Multiplier     : 1.0000
Dilution      : 1.0000
Use Multiplier & Dilution Factor with ISTDs
  
```

Signal 1: VWD1 A, Wavelength=214 nm

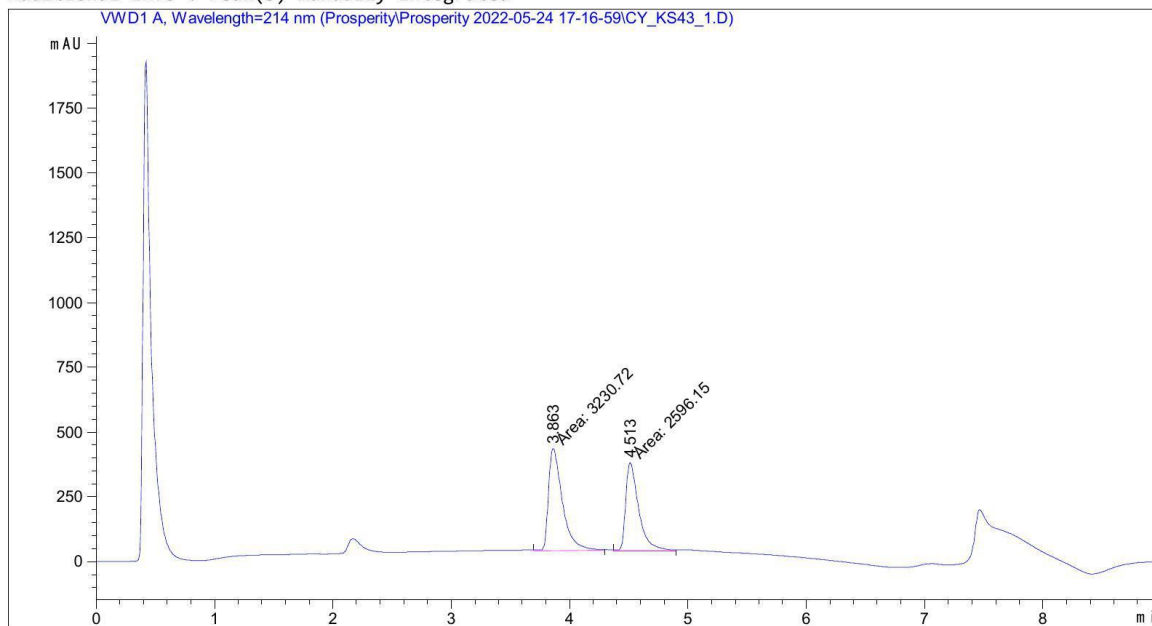
Peak #	RetTime [min]	Type	Width [min]	Area [mAU*s]	Height [mAU]	Area %
1	3.858	MM	0.1355	3898.45776	479.44394	52.4995
2	4.508	MM	0.1249	3527.24170	470.64722	47.5005

Totals : 7425.69946 950.09116

=====
 *** End of Report ***

```

=====
Acq. Operator   : SYSTEM                      Seq. Line : 24
Acq. Instrument : Timon HPLC                  Location  : 23
Injection Date  : 24/05/2022 22:28:45       Inj       : 1
                                                Inj Volume: 5.000 µl
Method          : C:\Chem32\1\Data\Prosperity\Prosperity 2022-05-24 17-16-59\CY_KS.M (
                : Sequence Method)
Last changed    : 24/05/2022 18:23:51 by SYSTEM
Additional Info  : Peak(s) manually integrated
  
```



=====
 Area Percent Report
 =====

```

Sorted By      : Signal
Multiplier     : 1.0000
Dilution       : 1.0000
Use Multiplier & Dilution Factor with ISTDs
  
```

Signal 1: VWd1 A, Wavelength=214 nm

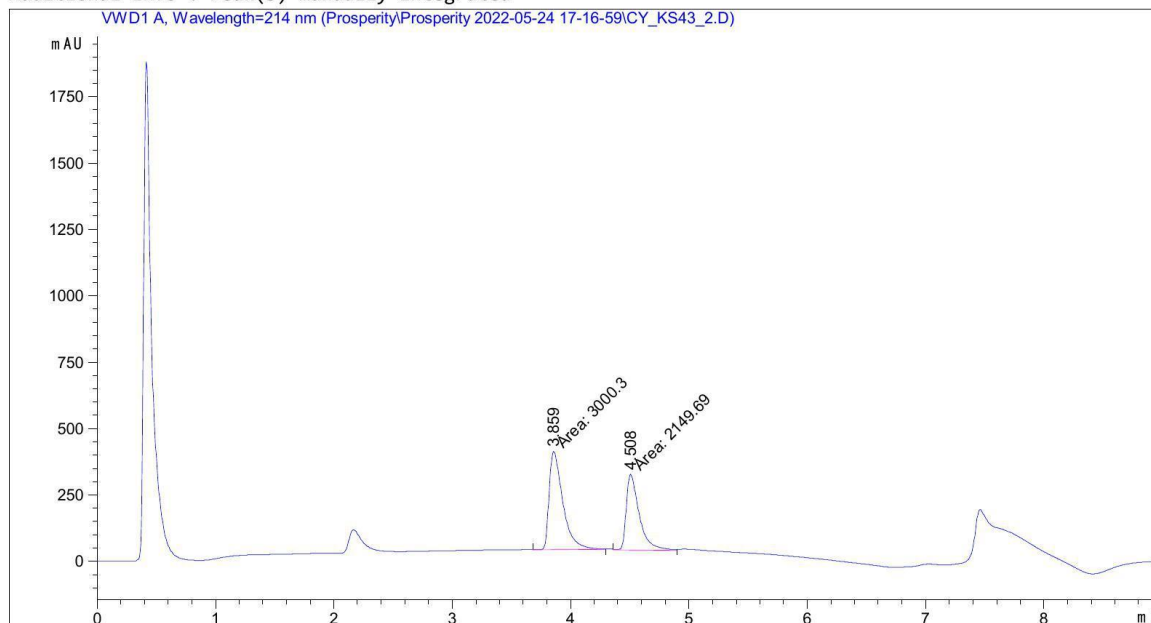
Peak #	RetTime [min]	Type	Width [min]	Area [mAU*s]	Height [mAU]	Area %
1	3.863	MM	0.1365	3230.71631	394.33316	55.4451
2	4.513	MM	0.1272	2596.15454	340.24539	44.5549

Totals : 5826.87085 734.57855

=====
 *** End of Report ***

```

=====
Acq. Operator   : SYSTEM                      Seq. Line : 25
Acq. Instrument : Timon HPLC                 Location  : 24
Injection Date  : 24/05/2022 22:39:05      Inj       : 1
                                                Inj Volume: 5.000 µl
Method         : C:\Chem32\1\Data\Prosperity\Prosperity 2022-05-24 17-16-59\CY_KS.M (
                Sequence Method)
Last changed    : 24/05/2022 18:23:51 by SYSTEM
Additional Info : Peak(s) manually integrated
  
```



=====
 Area Percent Report
 =====

```

Sorted By      : Signal
Multiplier     : 1.0000
Dilution       : 1.0000
Use Multiplier & Dilution Factor with ISTDs
  
```

Signal 1: VWD1 A, Wavelength=214 nm

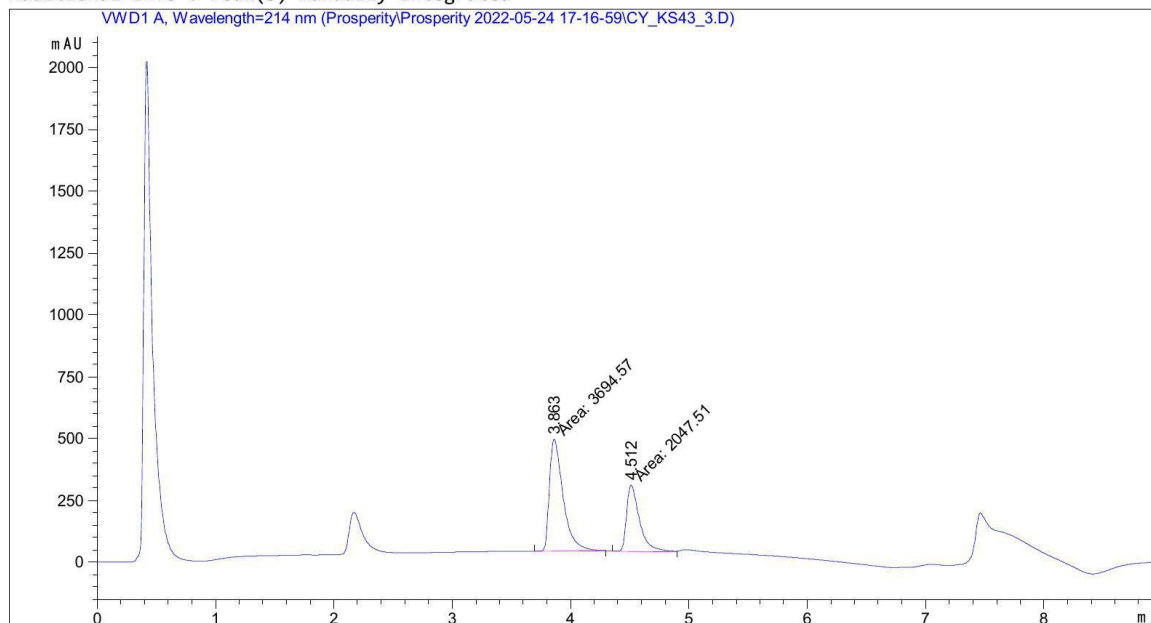
Peak #	RetTime [min]	Type	Width [min]	Area [mAU*s]	Height [mAU]	Area %
1	3.859	MM	0.1352	3000.29810	369.88593	58.2583
2	4.508	MM	0.1261	2149.69165	284.21649	41.7417

Totals : 5149.98975 654.10242

=====
 *** End of Report ***

```

=====
Acq. Operator   : SYSTEM                      Seq. Line : 26
Acq. Instrument : Timon HPLC                  Location  : 25
Injection Date  : 24/05/2022 22:49:26       Inj       : 1
                                                Inj Volume: 5.000 µl
Method          : C:\Chem32\1\Data\Prosperity\Prosperity 2022-05-24 17-16-59\CY_KS.M (
                : Sequence Method)
Last changed    : 24/05/2022 18:23:51 by SYSTEM
Additional Info  : Peak(s) manually integrated
  
```



=====
 Area Percent Report
 =====

```

Sorted By      : Signal
Multiplier     : 1.0000
Dilution      : 1.0000
Use Multiplier & Dilution Factor with ISTDs
  
```

Signal 1: VWD1 A, Wavelength=214 nm

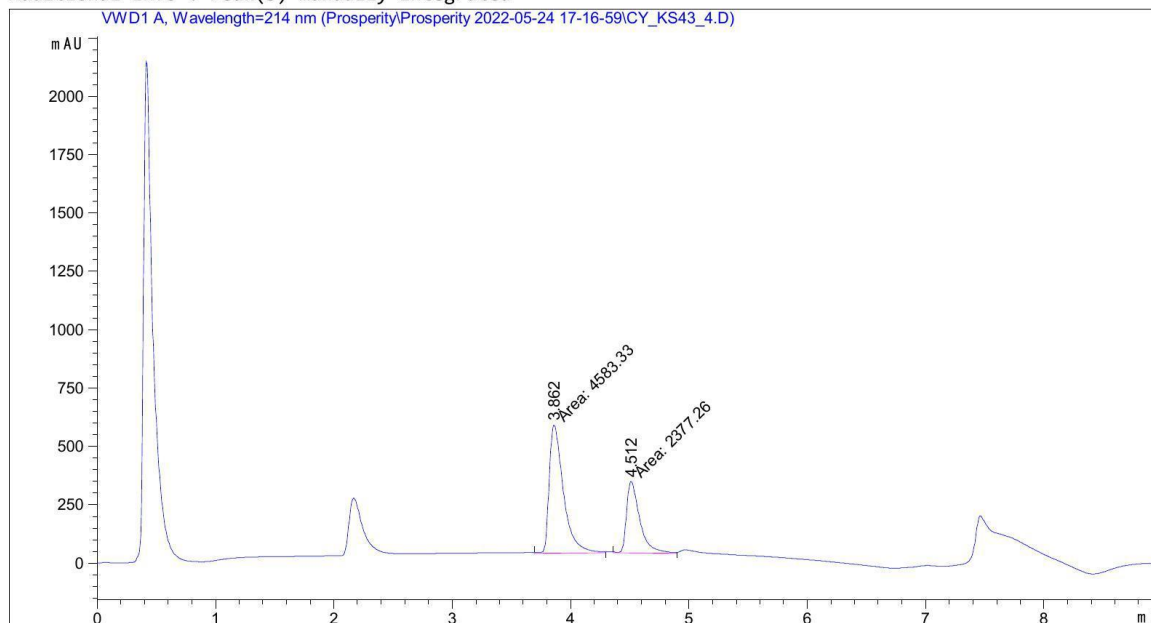
Peak #	RetTime [min]	Type	Width [min]	Area [mAU*s]	Height [mAU]	Area %
1	3.863	MM	0.1357	3694.56592	453.82535	64.3419
2	4.512	MM	0.1270	2047.51440	268.60461	35.6581

Totals : 5742.08032 722.42996

=====
 *** End of Report ***

```

=====
Acq. Operator   : SYSTEM                      Seq. Line : 28
Acq. Instrument : Timon HPLC                  Location  : 26
Injection Date  : 24/05/2022 23:10:12        Inj       : 1
                                           Inj Volume: 5.000 µl
Method          : C:\Chem32\1\Data\Prosperity\Prosperity 2022-05-24 17-16-59\CY_KS.M (
                : Sequence Method)
Last changed    : 24/05/2022 18:23:51 by SYSTEM
Additional Info  : Peak(s) manually integrated
  
```



=====
 Area Percent Report
 =====

```

Sorted By      : Signal
Multiplier     : 1.0000
Dilution      : 1.0000
Use Multiplier & Dilution Factor with ISTDs
  
```

Signal 1: VWD1 A, Wavelength=214 nm

Peak #	RetTime [min]	Type	Width [min]	Area [mAU*s]	Height [mAU]	Area %
1	3.862	MM	0.1392	4583.33008	548.84412	65.8468
2	4.512	MM	0.1291	2377.26245	306.98596	34.1532

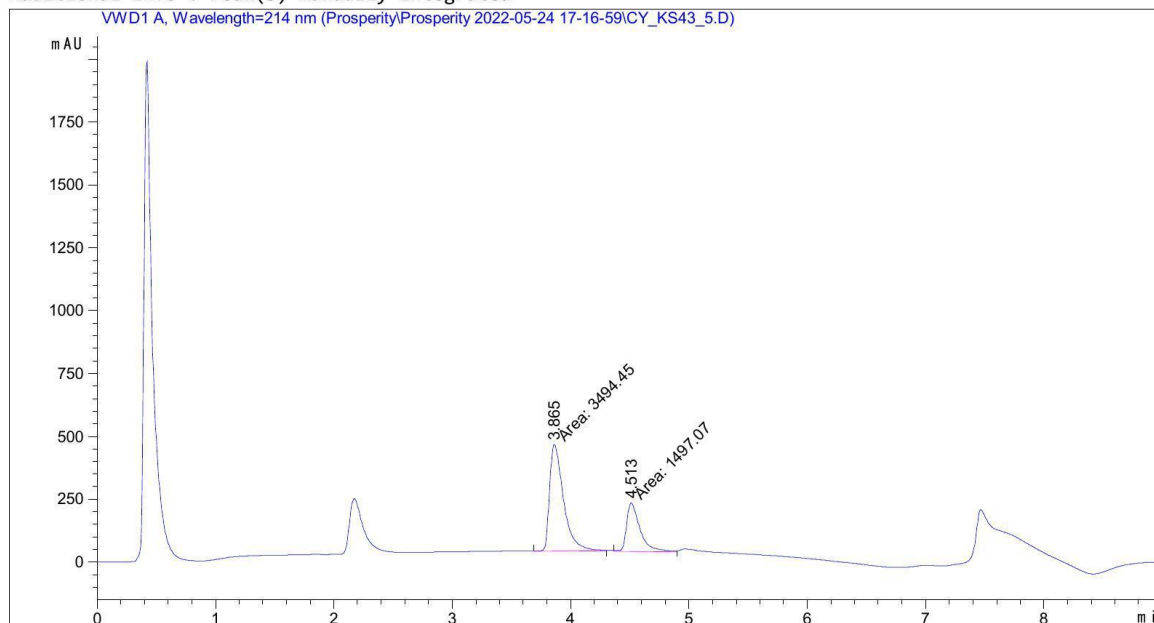
Totals : 6960.59253 855.83008

=====
 *** End of Report ***

Data File C:\Chem32\1\Data\Prosperity\Prosperity 2022-05-24 17-16-59\CY_KS43_5.D
 Sample Name: CY_KS43_5

```

=====
Acq. Operator   : SYSTEM                      Seq. Line :   29
Acq. Instrument : Timon HPLC                  Location  :   27
Injection Date  : 24/05/2022 23:20:32         Inj       :    1
                                           Inj Volume: 5.000 µl
Method         : C:\Chem32\1\Data\Prosperity\Prosperity 2022-05-24 17-16-59\CY_KS.M (
                Sequence Method)
Last changed   : 24/05/2022 18:23:51 by SYSTEM
Additional Info : Peak(s) manually integrated
  
```



=====
 Area Percent Report
 =====

```

Sorted By      : Signal
Multiplier     : 1.0000
Dilution       : 1.0000
Use Multiplier & Dilution Factor with ISTDs
  
```

Signal 1: VWD1 A, Wavelength=214 nm

Peak #	RetTime [min]	Type	Width [min]	Area [mAU*s]	Height [mAU]	Area %
1	3.865	MM	0.1374	3494.45239	423.98785	70.0078
2	4.513	MM	0.1301	1497.06506	191.72386	29.9922

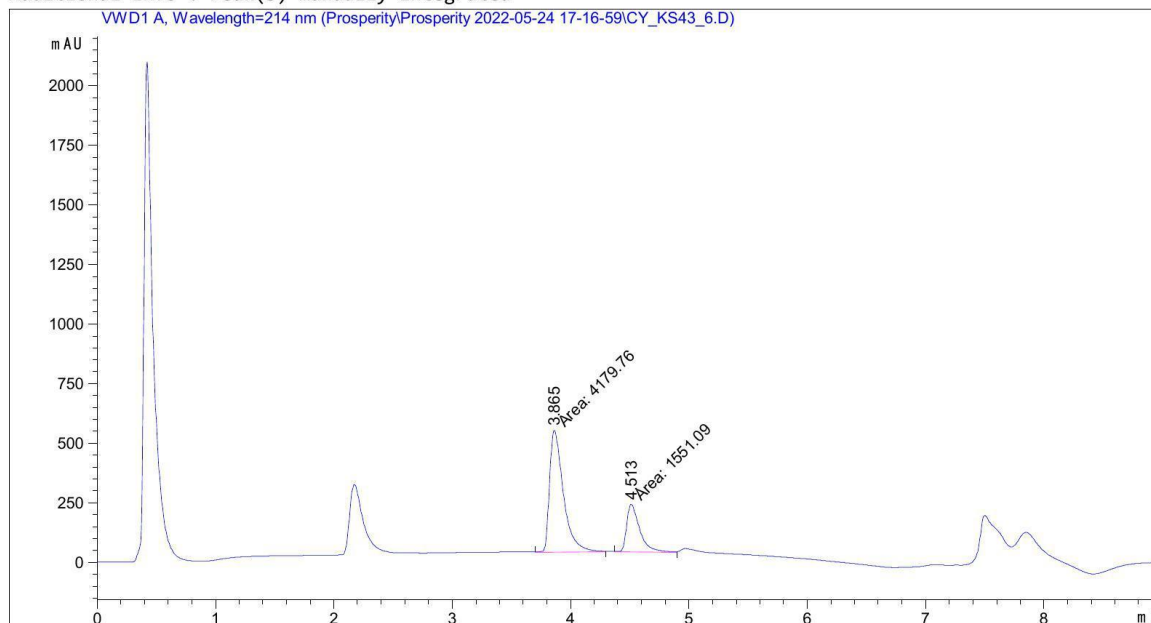
Totals : 4991.51746 615.71172

=====
 *** End of Report ***

```

=====
Acq. Operator   : SYSTEM                      Seq. Line :   30
Acq. Instrument : Timon HPLC                  Location  :   28
Injection Date  : 24/05/2022 23:30:53        Inj       :    1
                                           Inj Volume: 5.000 µl

Method         : C:\Chem32\1\Data\Prosperity\Prosperity 2022-05-24 17-16-59\CY_KS.M (
                Sequence Method)
Last changed   : 24/05/2022 18:23:51 by SYSTEM
Additional Info : Peak(s) manually integrated
  
```



=====
 Area Percent Report
 =====

```

Sorted By      :      Signal
Multiplier     :      1.0000
Dilution       :      1.0000
Use Multiplier & Dilution Factor with ISTDs
  
```

Signal 1: VWD1 A, Wavelength=214 nm

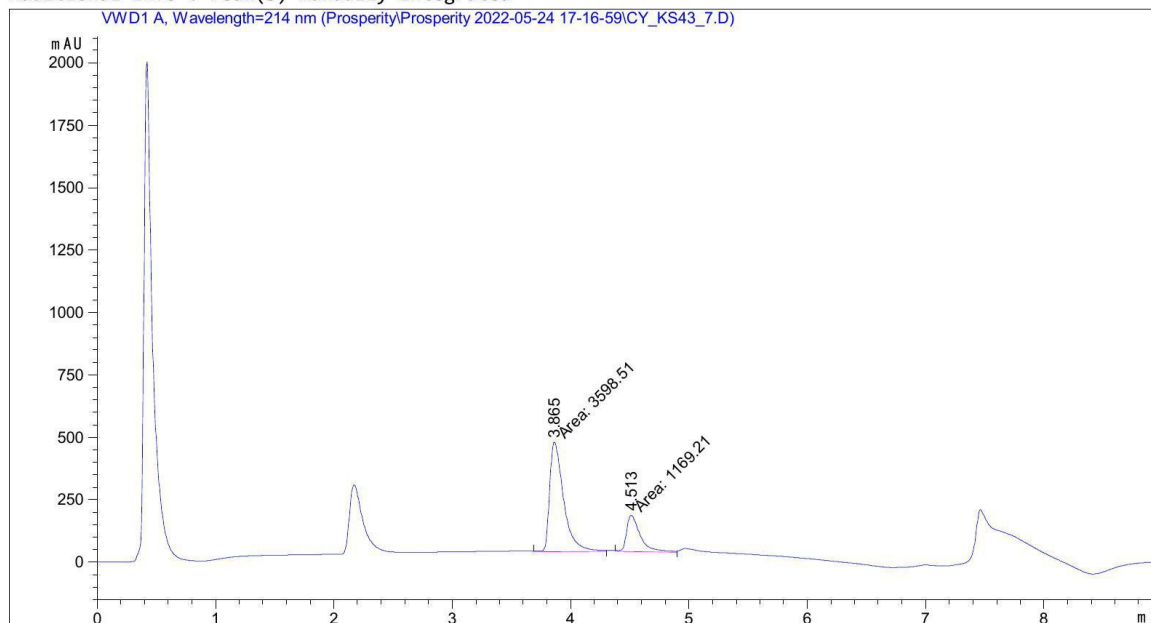
Peak #	RetTime [min]	Type	Width [min]	Area [mAU*s]	Height [mAU]	Area %
1	3.865	MM	0.1363	4179.75635	511.09512	72.9344
2	4.513	MM	0.1287	1551.08862	200.90512	27.0656

Totals : 5730.84497 712.00024

=====
 *** End of Report ***


```

=====
Acq. Operator   : SYSTEM                      Seq. Line :   31
Acq. Instrument : Timon HPLC                  Location  :   29
Injection Date  : 24/05/2022 23:41:14        Inj       :    1
                                           Inj Volume: 5.000 µl
Method          : C:\Chem32\1\Data\Prosperity\Prosperity 2022-05-24 17-16-59\CY_KS.M (
                : Sequence Method)
Last changed    : 24/05/2022 18:23:51 by SYSTEM
Additional Info  : Peak(s) manually integrated
  
```



=====
 Area Percent Report
 =====

```

Sorted By      : Signal
Multiplier     : 1.0000
Dilution       : 1.0000
Use Multiplier & Dilution Factor with ISTDs
  
```

Signal 1: VWD1 A, Wavelength=214 nm

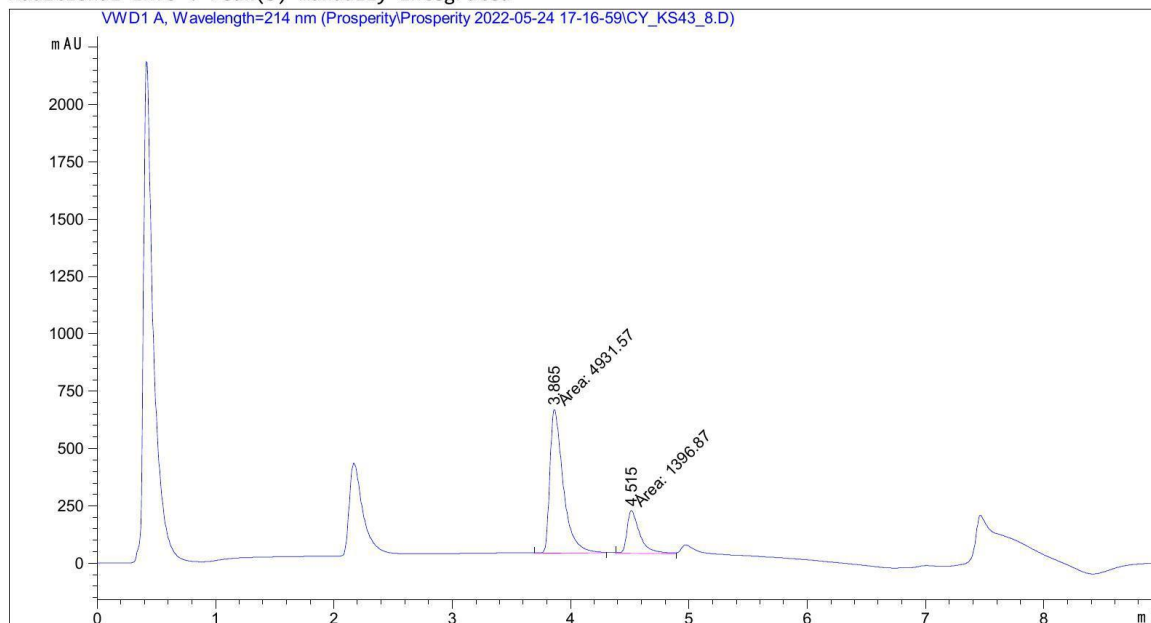
Peak #	RetTime [min]	Type	Width [min]	Area [mAU*s]	Height [mAU]	Area %
1	3.865	MM	0.1369	3598.50928	438.21997	75.4766
2	4.513	MM	0.1337	1169.20898	145.75748	24.5234

Totals : 4767.71826 583.97745

=====
 *** End of Report ***

```

=====
Acq. Operator   : SYSTEM                      Seq. Line :   33
Acq. Instrument : Timon HPLC                  Location  :   30
Injection Date  : 25/05/2022 00:02:03        Inj       :    1
                                           Inj Volume: 5.000 µl
Method         : C:\Chem32\1\Data\Prosperity\Prosperity 2022-05-24 17-16-59\CY_KS.M (
                Sequence Method)
Last changed    : 24/05/2022 18:23:51 by SYSTEM
Additional Info : Peak(s) manually integrated
  
```



=====
 Area Percent Report
 =====

```

Sorted By      :      Signal
Multiplier     :      1.0000
Dilution      :      1.0000
Use Multiplier & Dilution Factor with ISTDs
  
```

Signal 1: VWD1 A, Wavelength=214 nm

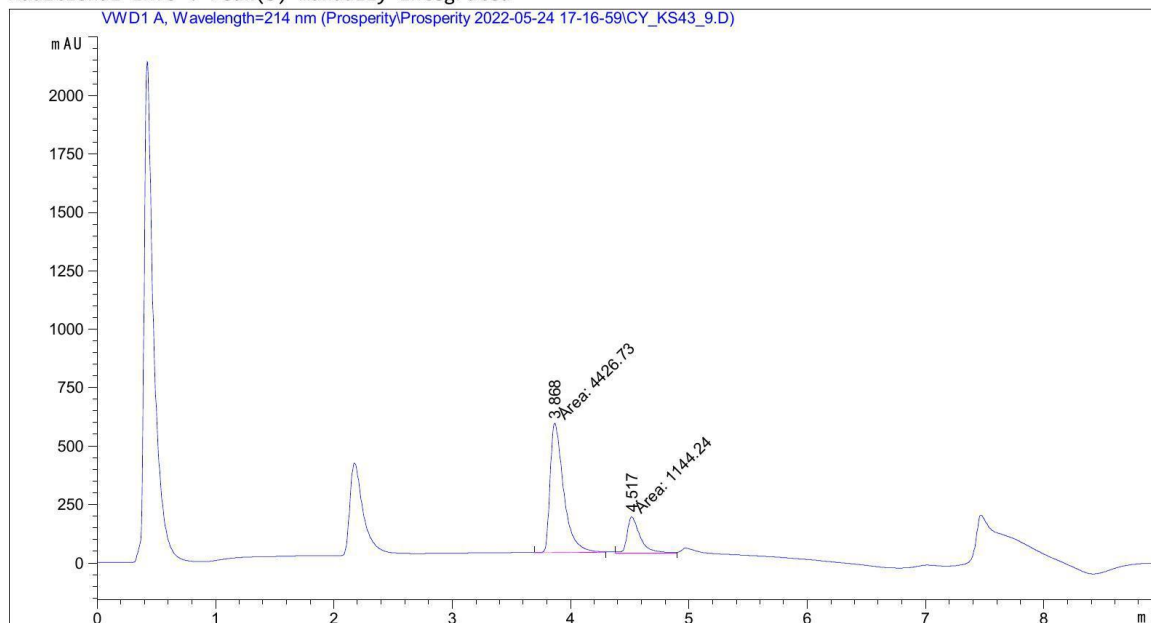
Peak #	RetTime [min]	Type	Width [min]	Area [mAU*s]	Height [mAU]	Area %
1	3.865	MM	0.1312	4931.56689	626.67621	77.9272
2	4.515	MM	0.1246	1396.86523	186.82523	22.0728

Totals : 6328.43213 813.50143

=====
 *** End of Report ***

```

=====
Acq. Operator   : SYSTEM                      Seq. Line :   34
Acq. Instrument : Timon HPLC                  Location  :   31
Injection Date  : 25/05/2022 00:12:25        Inj       :    1
                                           Inj Volume: 5.000 µl
Method          : C:\Chem32\1\Data\Prosperity\Prosperity 2022-05-24 17-16-59\CY_KS.M (
                : Sequence Method)
Last changed    : 24/05/2022 18:23:51 by SYSTEM
Additional Info  : Peak(s) manually integrated
  
```



=====
 Area Percent Report
 =====

```

Sorted By      : Signal
Multiplier     : 1.0000
Dilution      : 1.0000
Use Multiplier & Dilution Factor with ISTDs
  
```

Signal 1: VWD1 A, Wavelength=214 nm

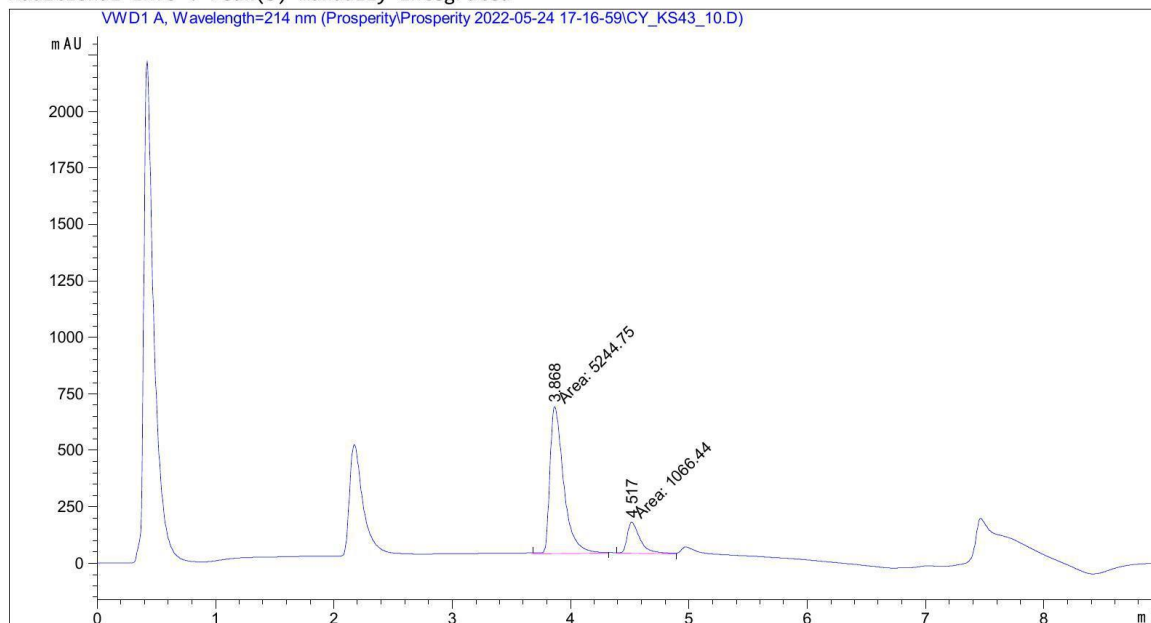
Peak #	RetTime [min]	Type	Width [min]	Area [mAU*s]	Height [mAU]	Area %
1	3.868	MM	0.1333	4426.72705	553.57880	79.4607
2	4.517	MM	0.1245	1144.23547	153.13011	20.5393

Totals : 5570.96252 706.70891

=====
 *** End of Report ***

```

=====
Acq. Operator   : SYSTEM                      Seq. Line :   35
Acq. Instrument : Timon HPLC                  Location  :   32
Injection Date  : 25/05/2022 00:22:47         Inj       :    1
                                           Inj Volume: 5.000 µl
Method          : C:\Chem32\1\Data\Prosperity\Prosperity 2022-05-24 17-16-59\CY_KS.M (
                  Sequence Method)
Last changed    : 24/05/2022 18:23:51 by SYSTEM
Additional Info  : Peak(s) manually integrated
  
```



```

=====
                          Area Percent Report
=====
  
```

```

Sorted By      :      Signal
Multiplier     :      1.0000
Dilution       :      1.0000
Use Multiplier & Dilution Factor with ISTDs
  
```

Signal 1: VWD1 A, Wavelength=214 nm

Peak #	RetTime [min]	Type	Width [min]	Area [mAU*s]	Height [mAU]	Area %
1	3.868	MM	0.1347	5244.74707	649.16217	83.1024
2	4.517	MM	0.1286	1066.44104	138.22710	16.8976

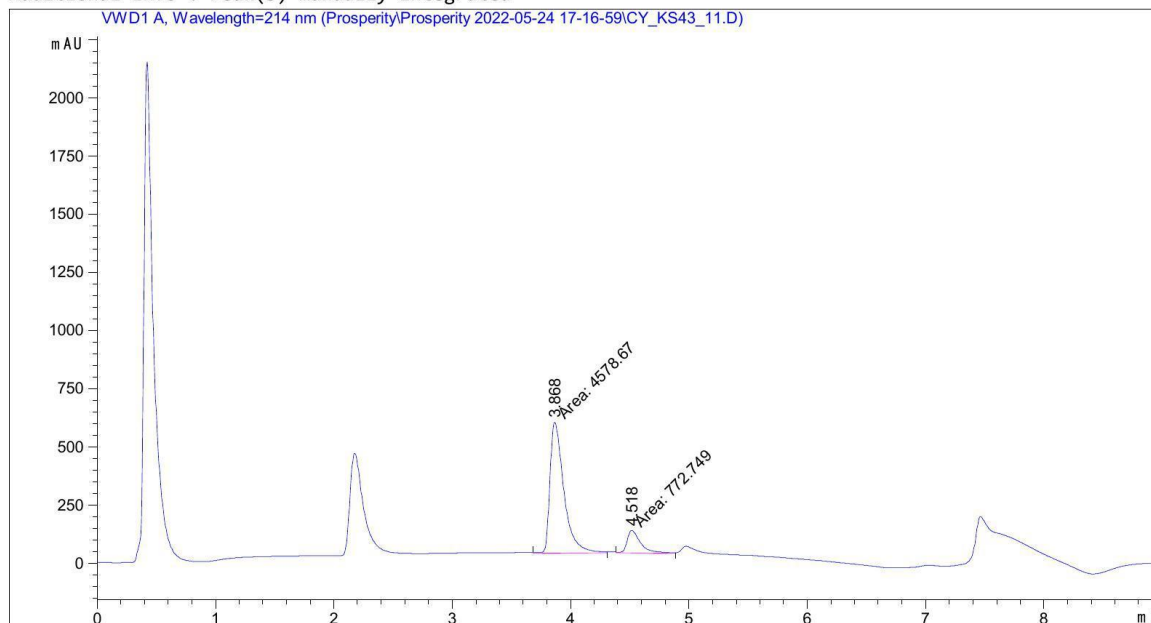
```
Totals :                      6311.18811  787.38927
```

```

=====
*** End of Report ***
  
```

```

=====
Acq. Operator   : SYSTEM                      Seq. Line :   36
Acq. Instrument : Timon HPLC                  Location  :   33
Injection Date  : 25/05/2022 00:33:07       Inj       :    1
                                           Inj Volume: 5.000 µl
Method         : C:\Chem32\1\Data\Prosperity\Prosperity 2022-05-24 17-16-59\CY_KS.M (
                Sequence Method)
Last changed   : 24/05/2022 18:23:51 by SYSTEM
Additional Info : Peak(s) manually integrated
  
```



=====
 Area Percent Report
 =====

```

Sorted By      :      Signal
Multiplier     :      1.0000
Dilution       :      1.0000
Use Multiplier & Dilution Factor with ISTDs
  
```

Signal 1: VWD1 A, Wavelength=214 nm

Peak #	RetTime [min]	Type	Width [min]	Area [mAU*s]	Height [mAU]	Area %
1	3.868	MM	0.1358	4578.66846	561.76074	85.5599
2	4.518	MM	0.1321	772.74945	97.48956	14.4401

Totals : 5351.41791 659.25031

=====
 *** End of Report ***