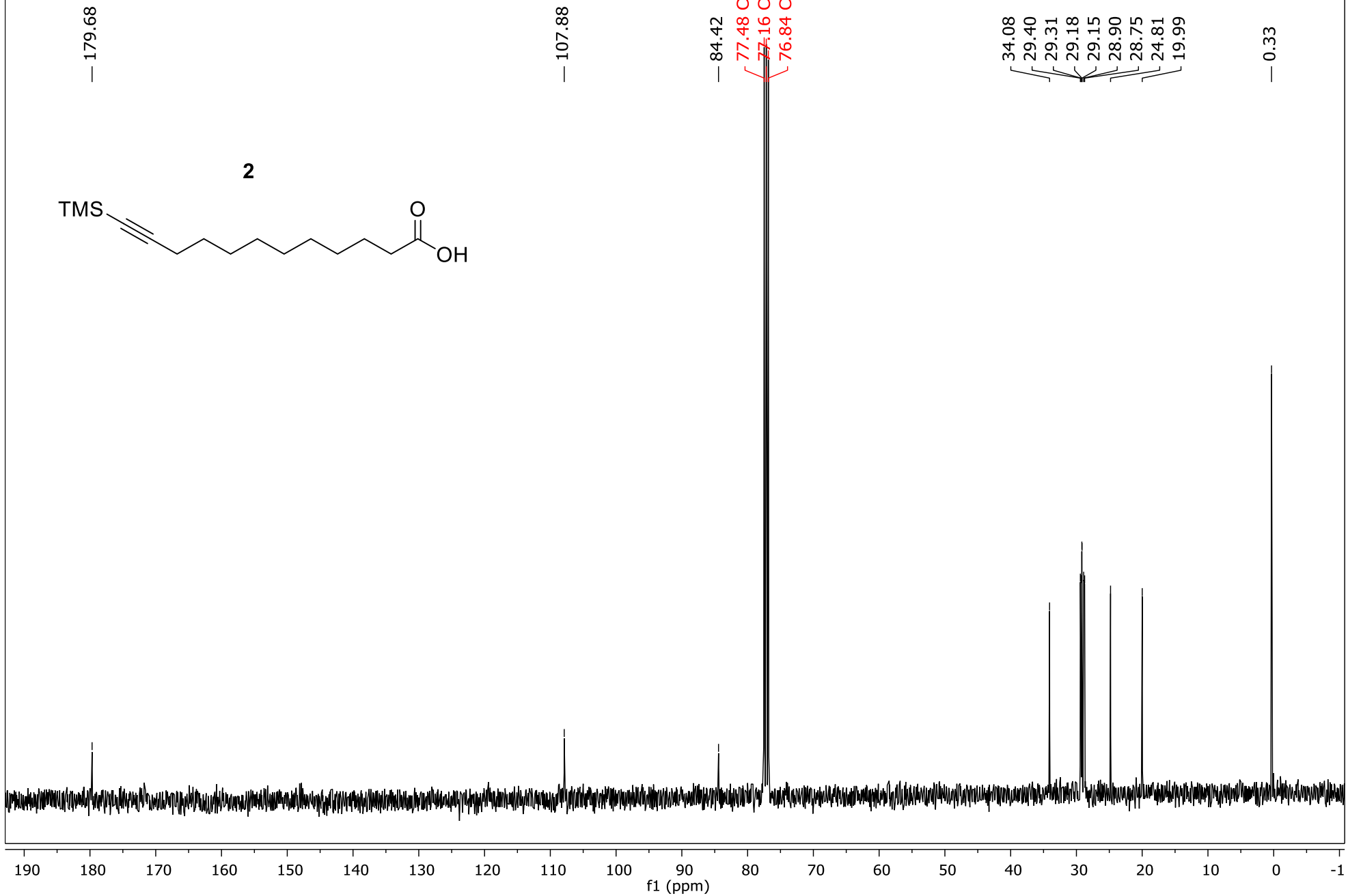
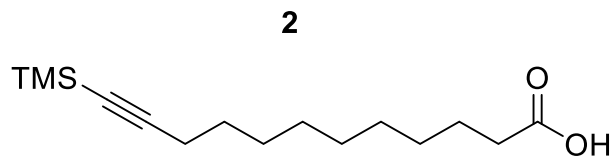
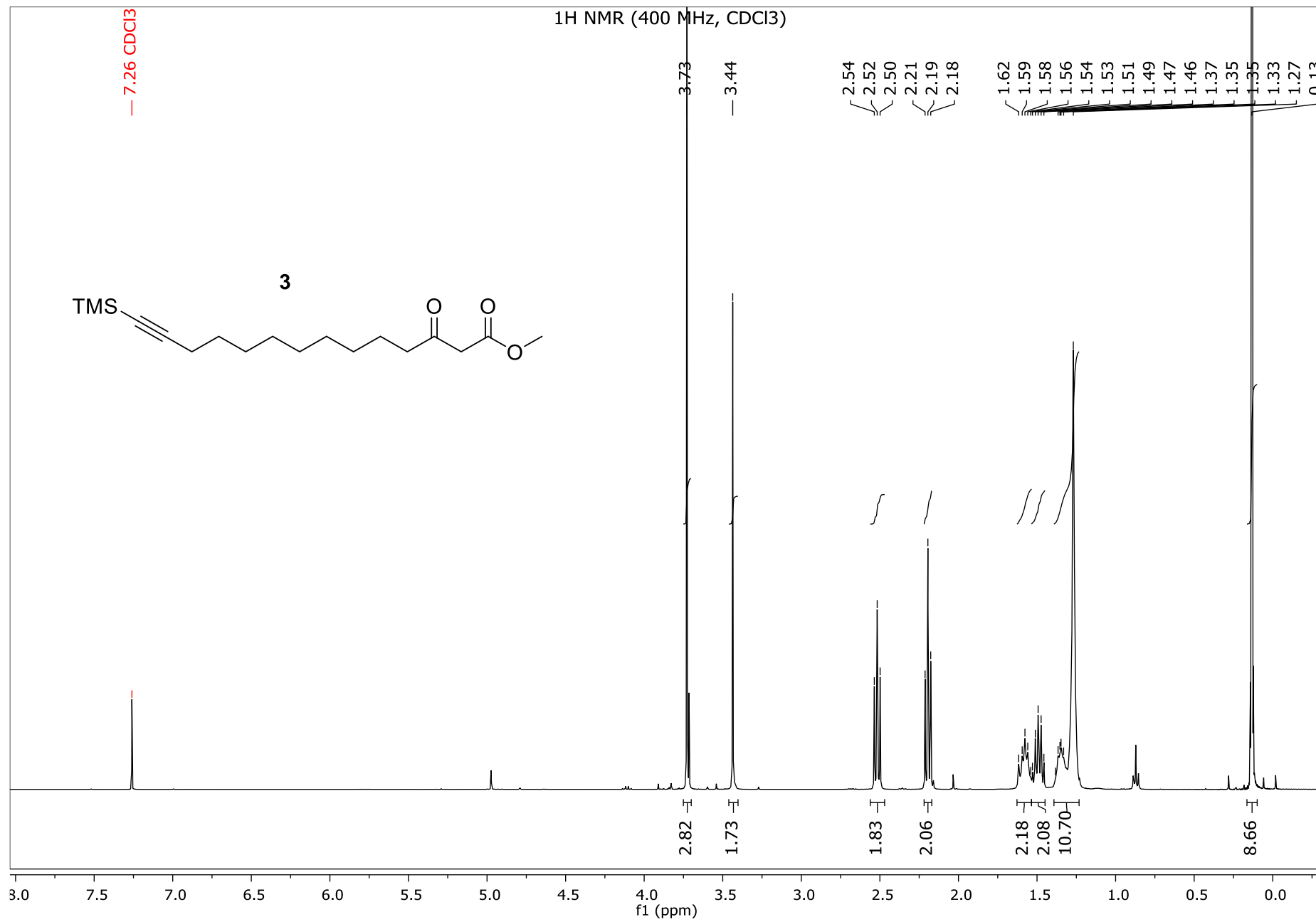


¹³C NMR (101 MHz, CDCl₃)





¹³C NMR (101 MHz, CDCl₃)

— 202.94

— 167.83

— 107.85

84.39

77.48 CDCl₃

77.16 CDCl₃

76.84 CDCl₃

52.45

49.15

43.20

29.40

29.38

29.13

29.10

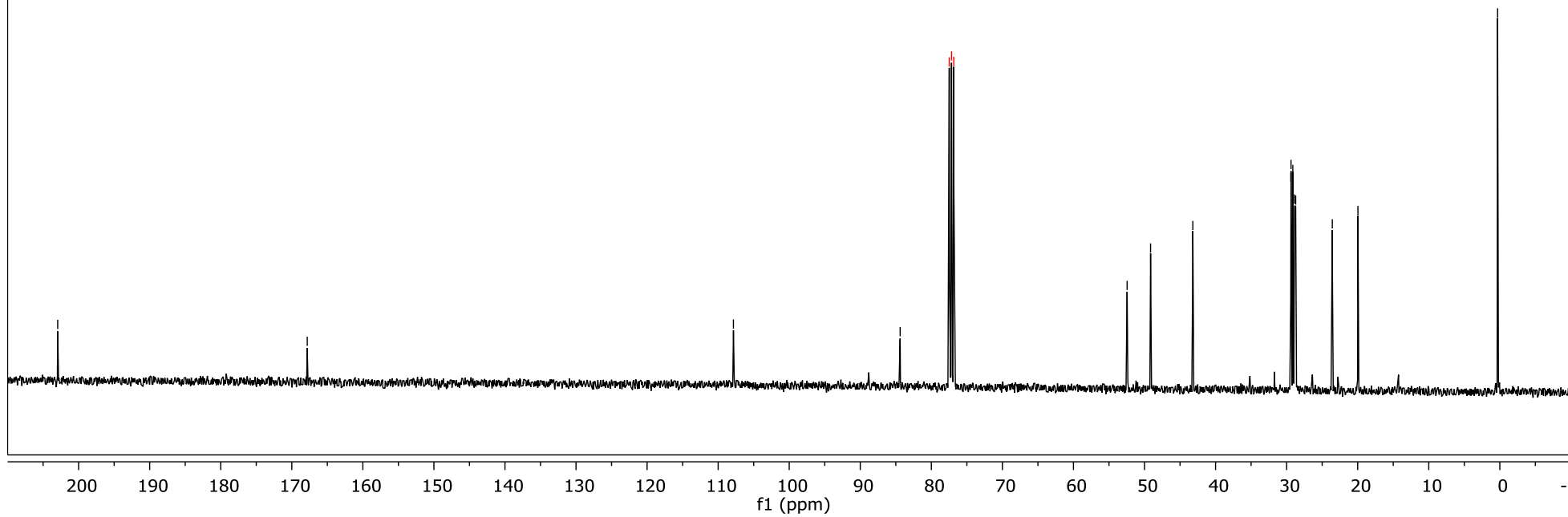
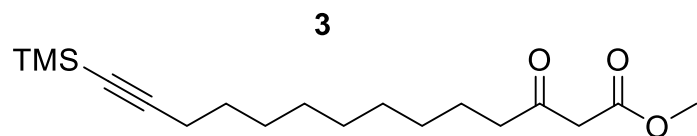
28.88

28.73

23.57

19.97

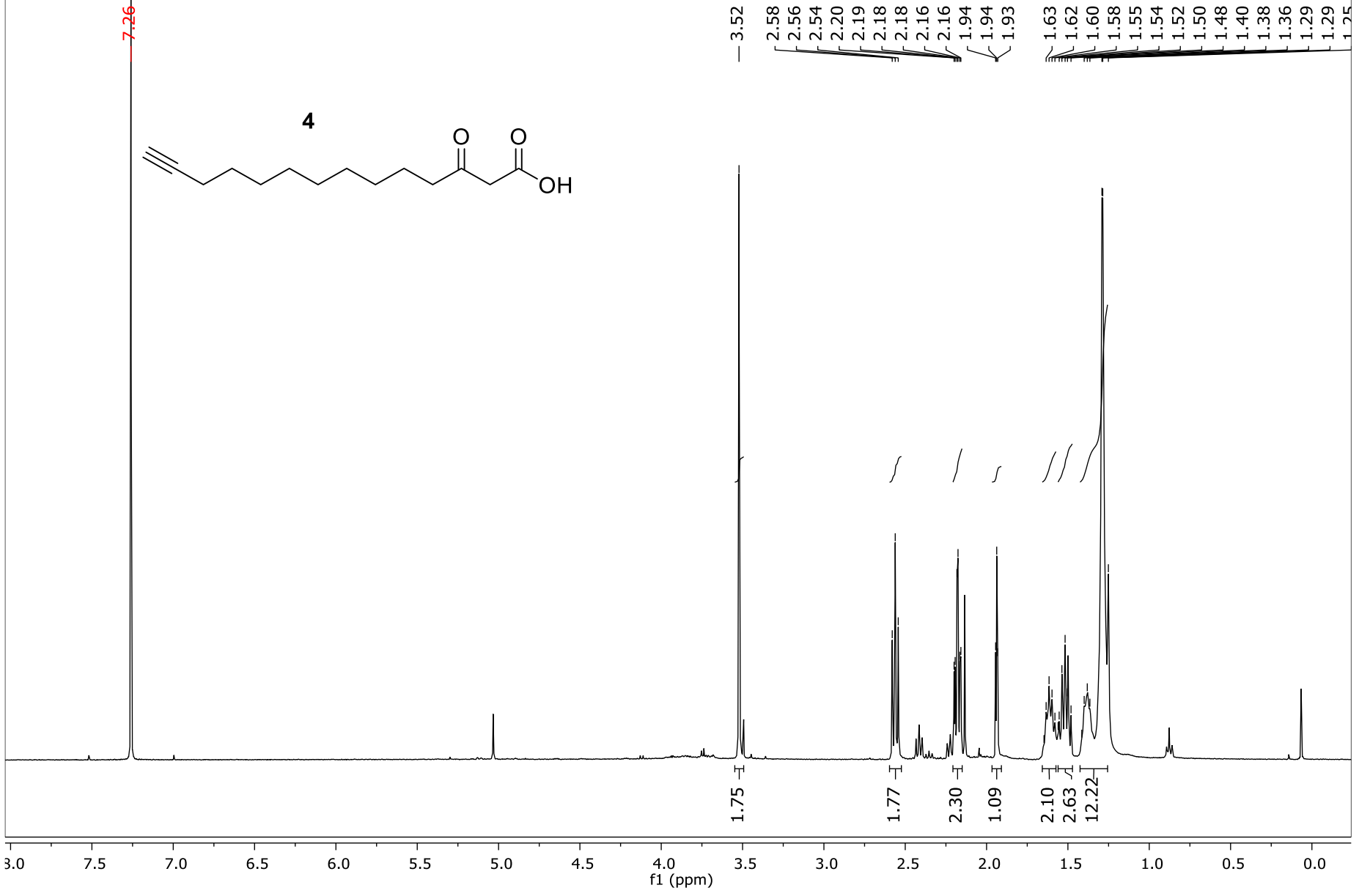
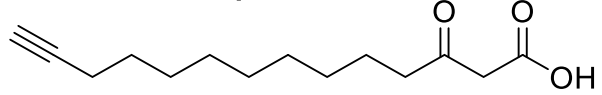
— 0.31

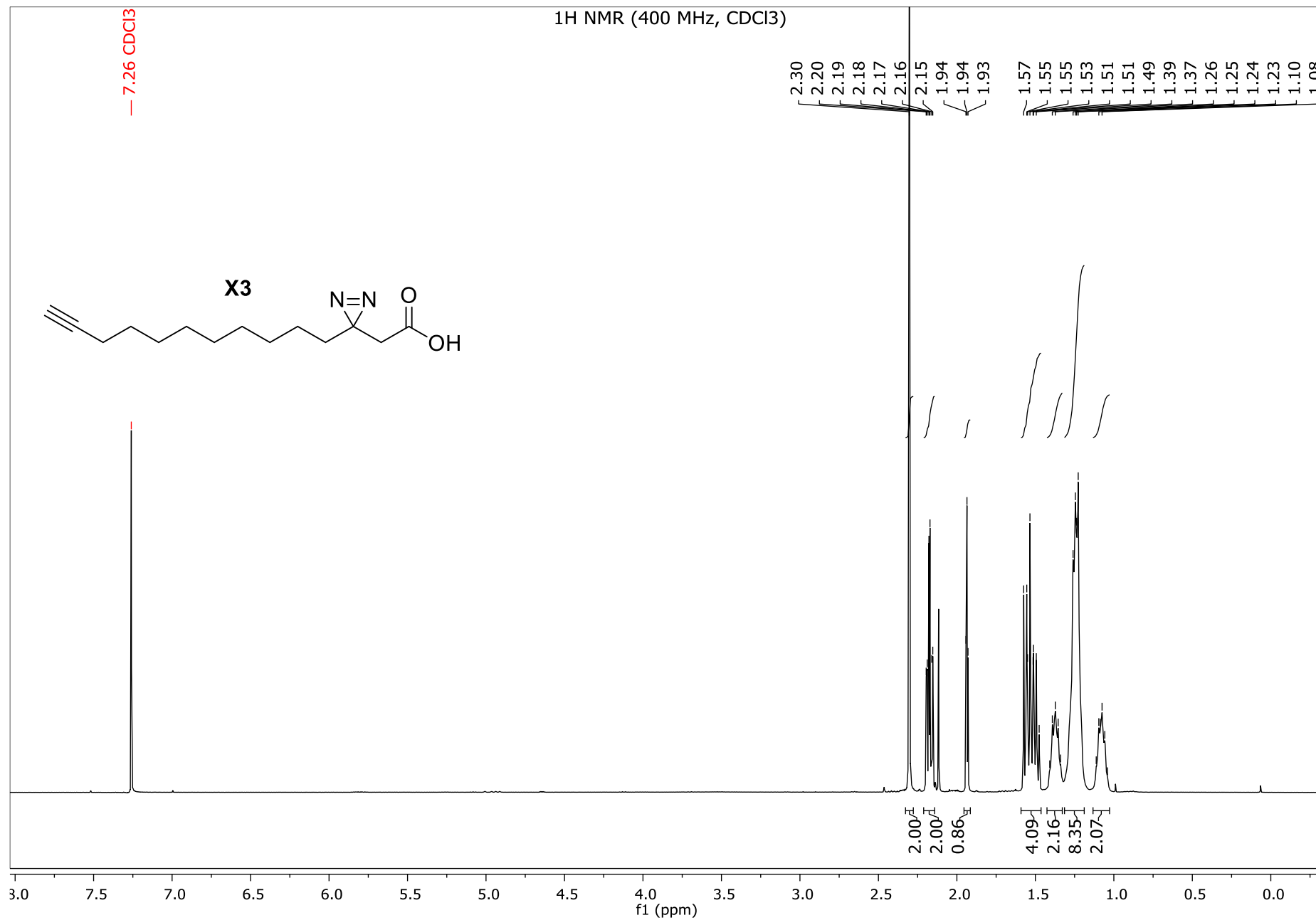


1H NMR (400 MHz, CDCl3)

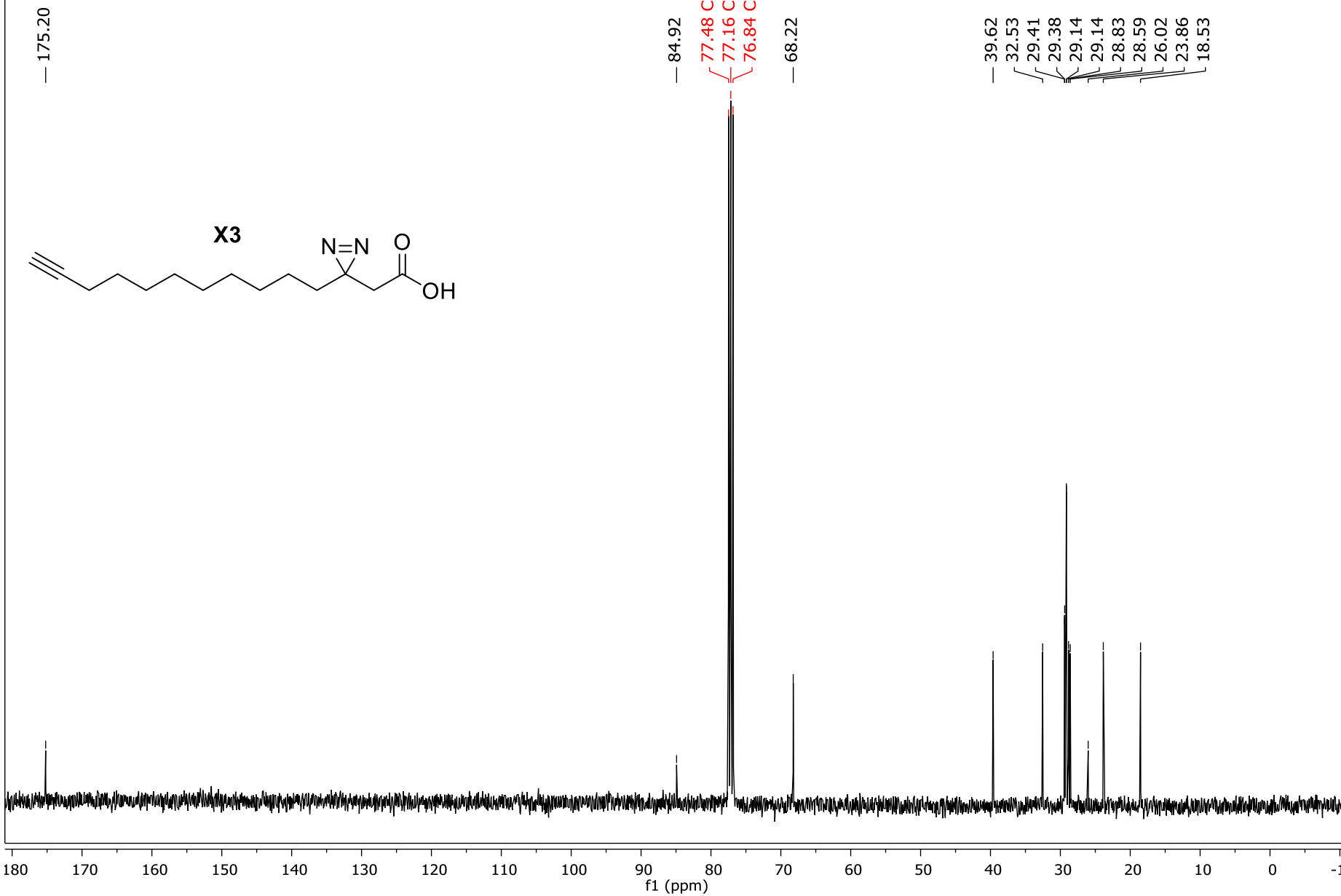
7.26 CDCl3

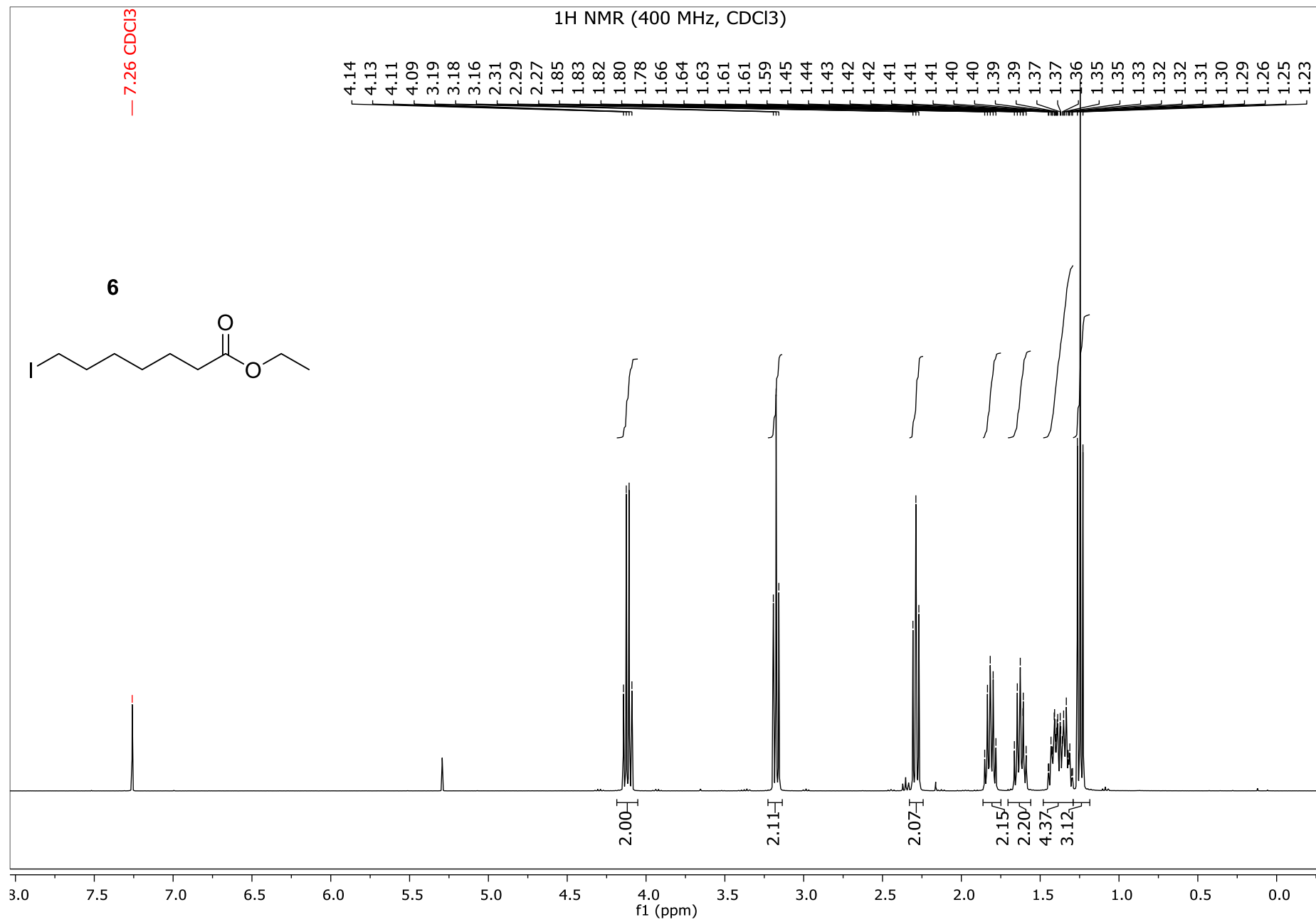
4





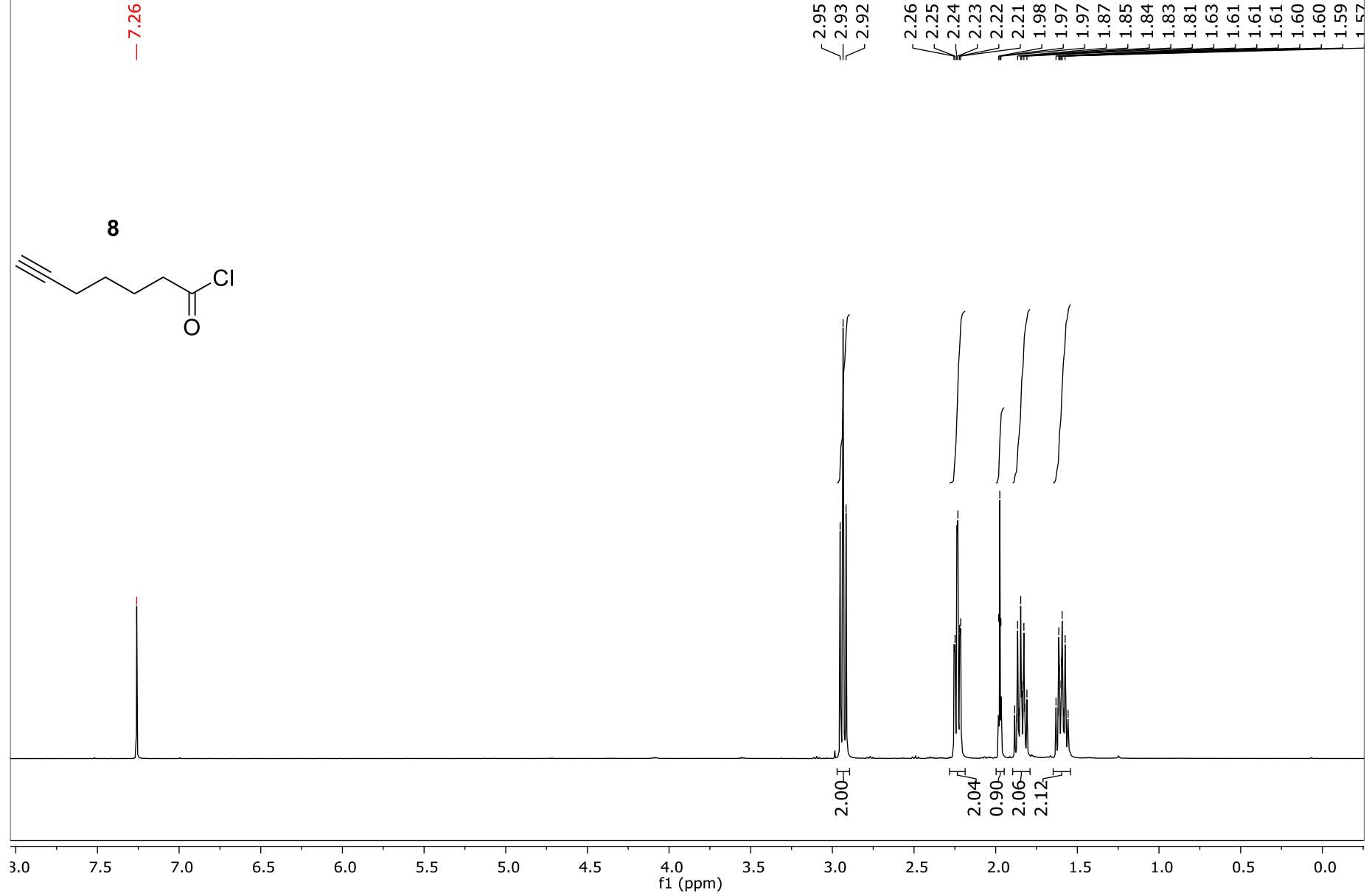
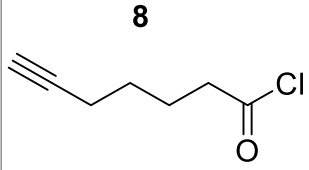
¹³C NMR (101 MHz, CDCl₃)

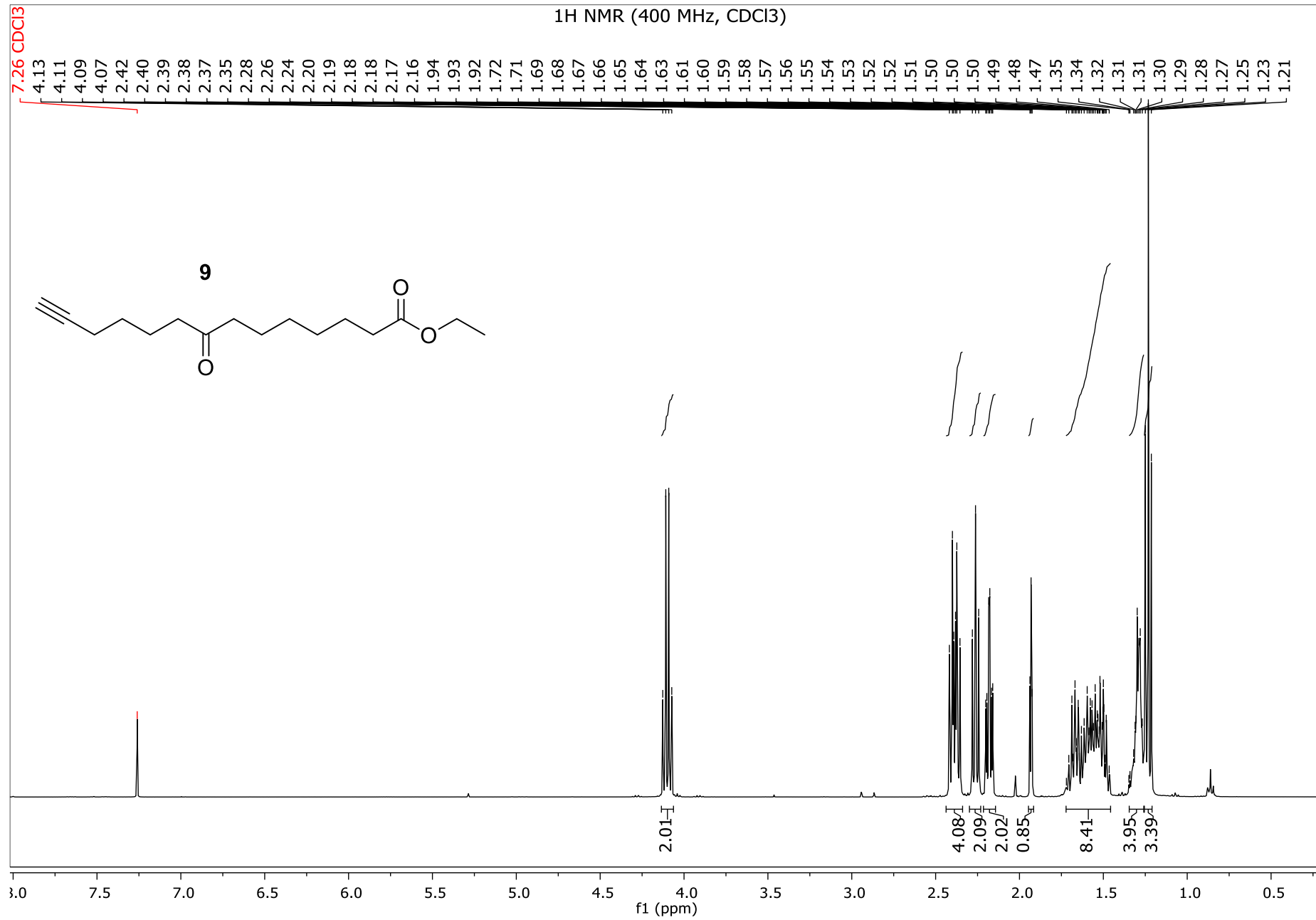


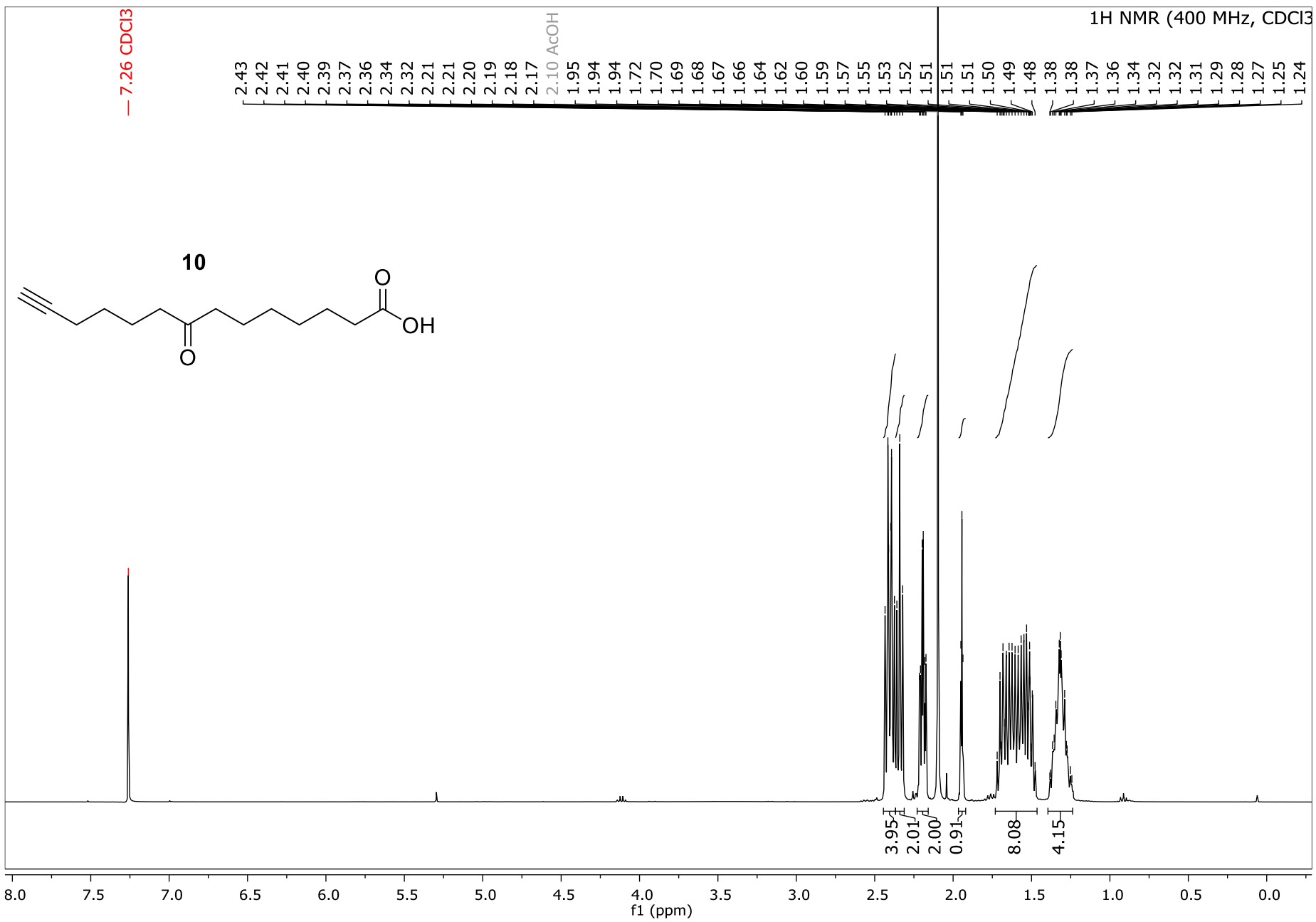


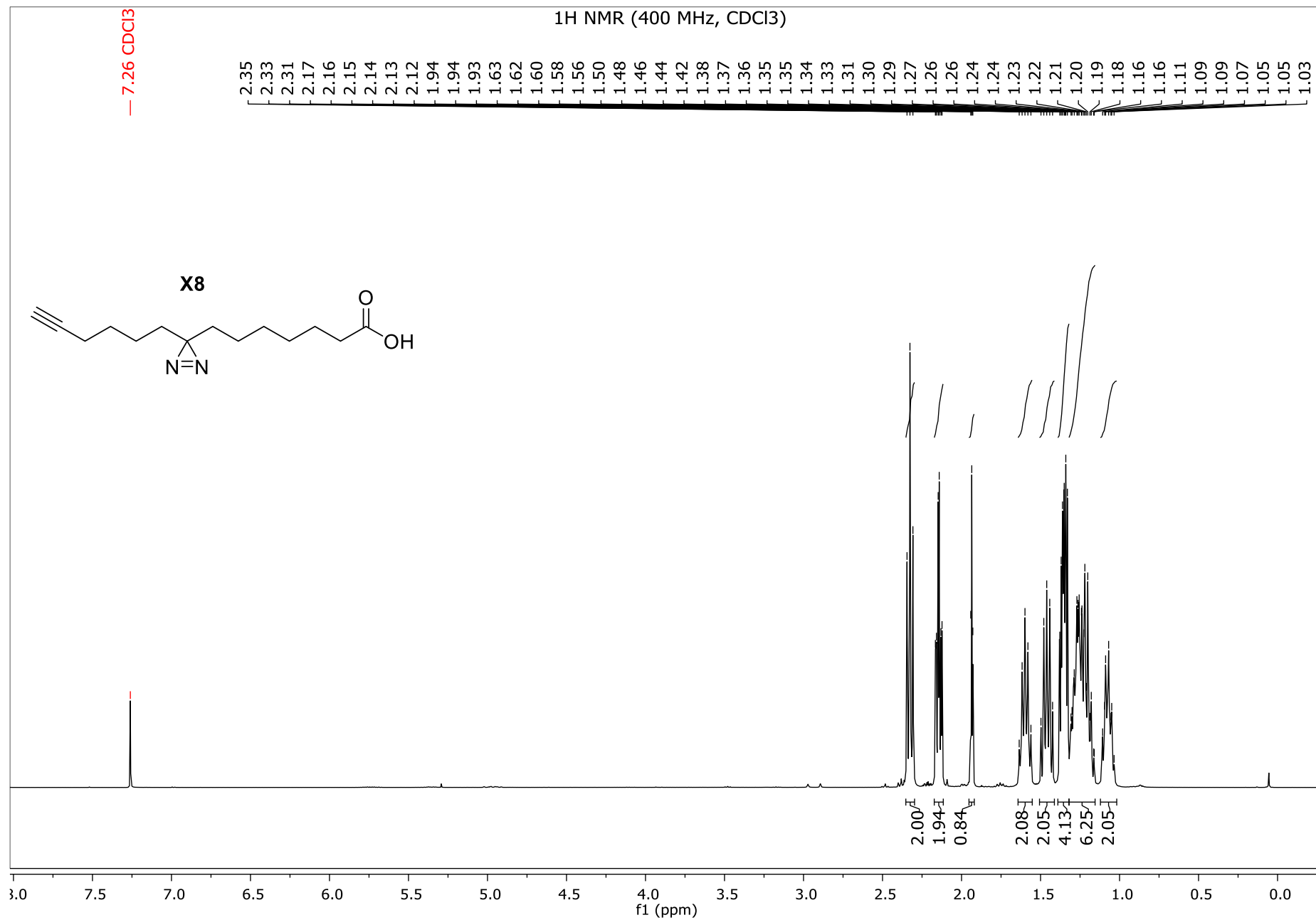
1H NMR (400 MHz, CDCl3)

7.26 CDCl3

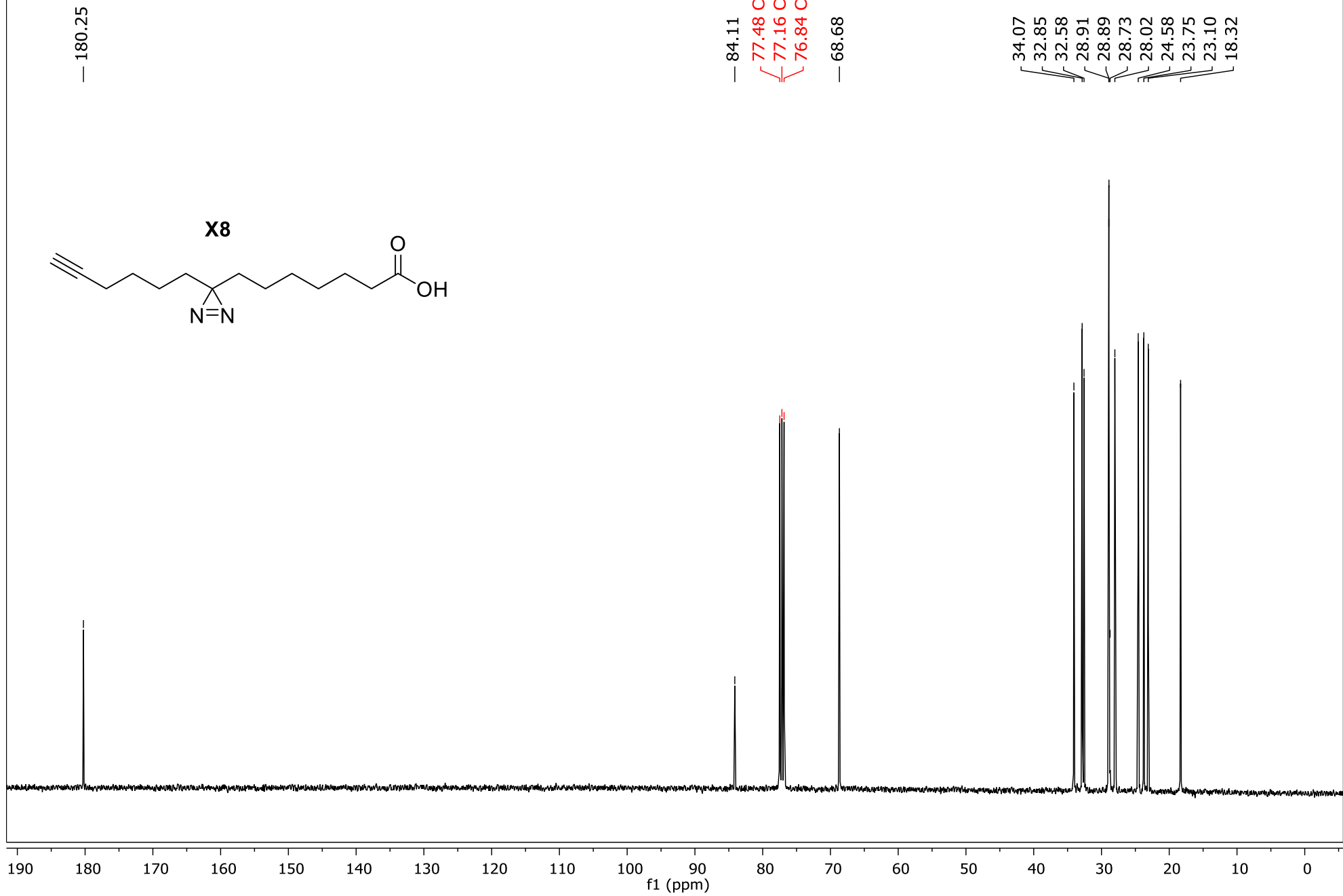
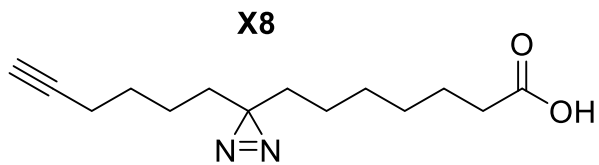






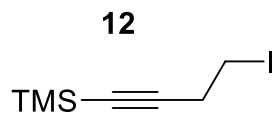


¹³C NMR (101 MHz, CDCl₃)



1H NMR (400 MHz, CDCl3)

— 7.26 CDCl3



3.23
3.22
3.20
2.81
2.79
2.77

0.16

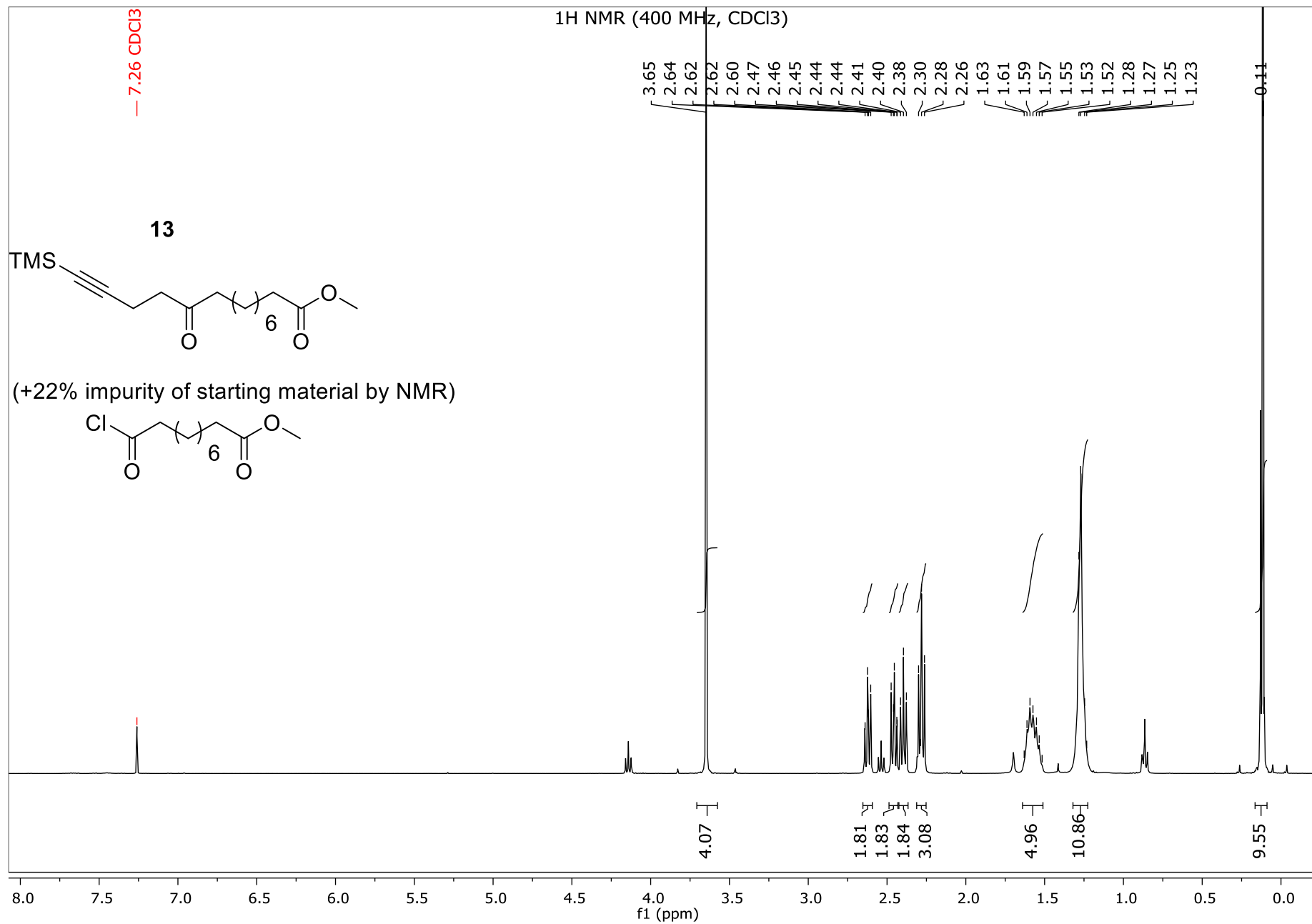
2.00

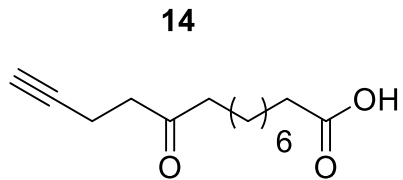
2.01

8.92

7.5 7.0 6.5 6.0 5.5 5.0 4.5 4.0 3.5 3.0 2.5 2.0 1.5 1.0 0.5 0.0

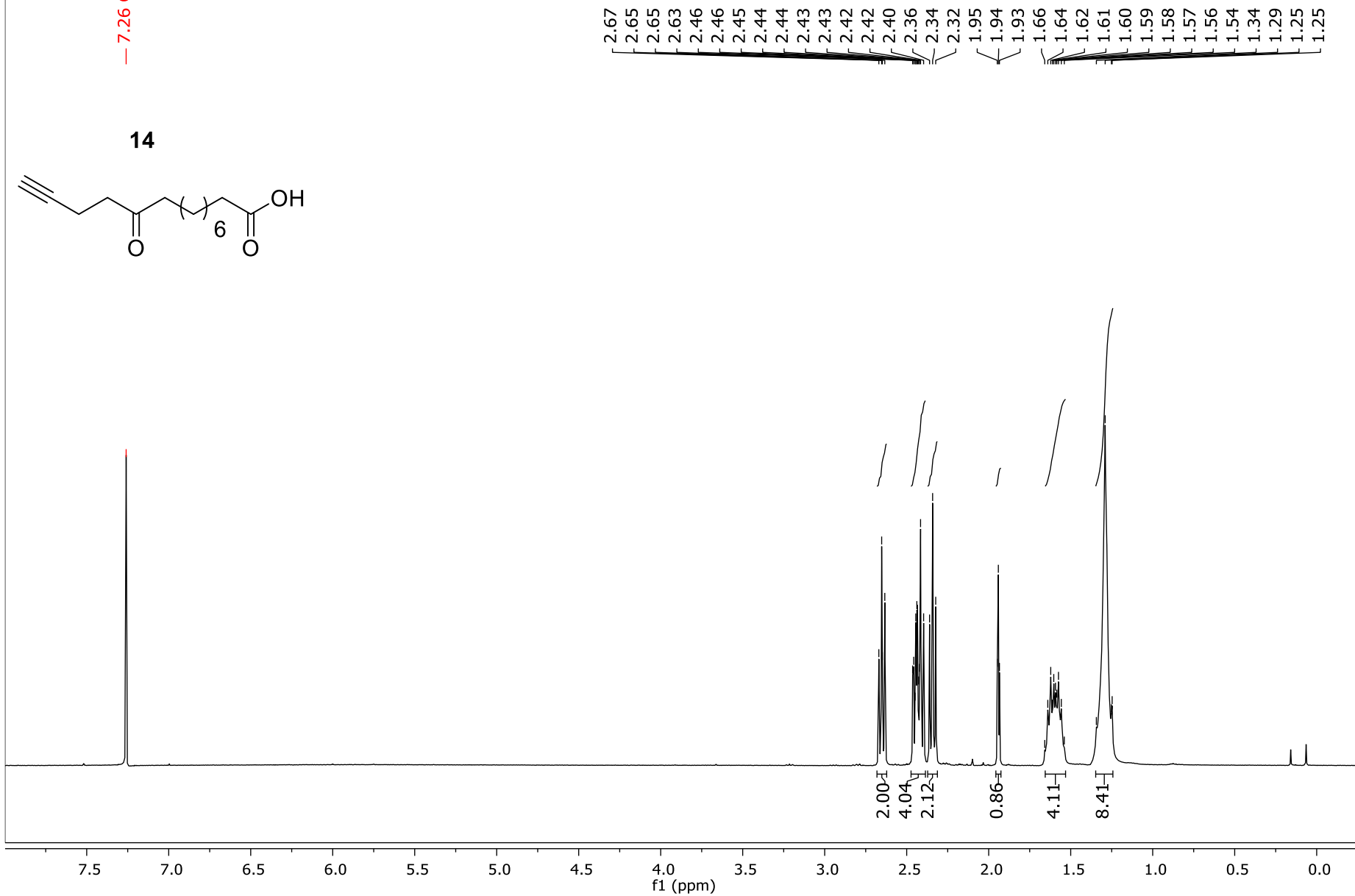
f1 (ppm)

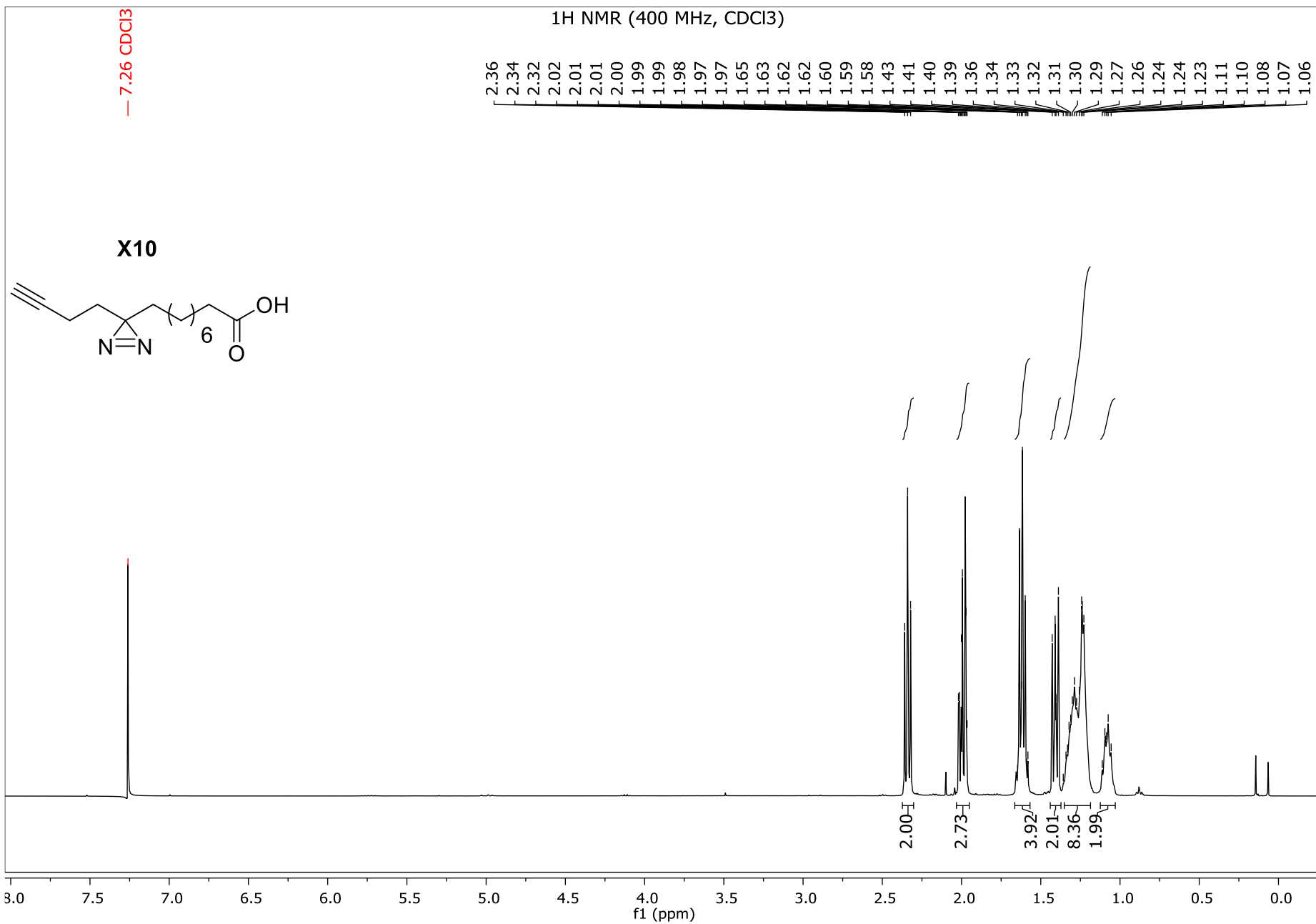




— 7.26 CDCl₃

¹H NMR (400 MHz, CDCl₃)





¹³C NMR (101 MHz, CDCl₃)

