

## Supporting Information

Combined photothermal-photodynamic therapy by indocyanine green loaded polydopamine nanoparticles enhances anti-mammary gland tumor efficacy

Xu Liu, Na Xu, Ximing Pu, Juan Wang\*, Xiaoming Liao, Zhongbing Huang, Guangfu Yin\*

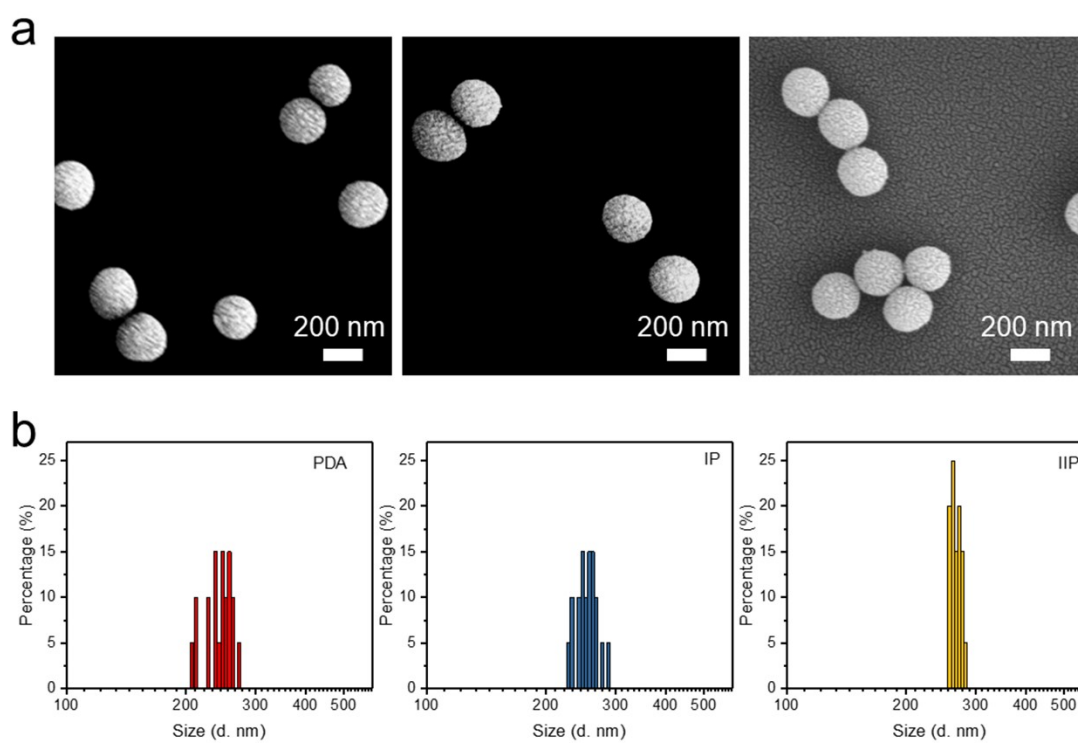
*College of Biomedical Engineering, Sichuan University, Chengdu 610065, China*

\*Corresponding authors: Juan Wang (J. Wang), Guangfu Yin (G.F. Yin)

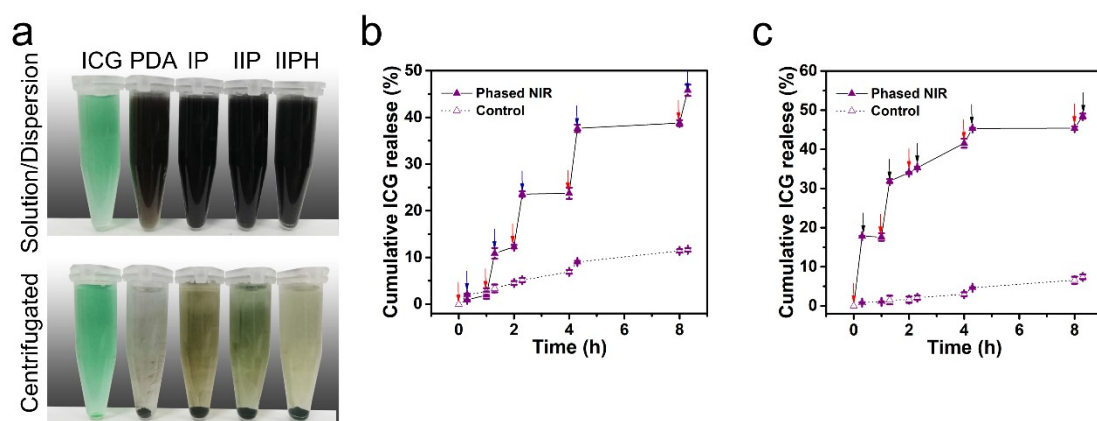
Email: [jwang22@scu.edu.cn](mailto:jwang22@scu.edu.cn) (J. Wang); [nic0700@scu.edu.cn](mailto:nic0700@scu.edu.cn) (G.F. Yin)

Tel: 86-28-85413003. Fax: 86-28-85413003.

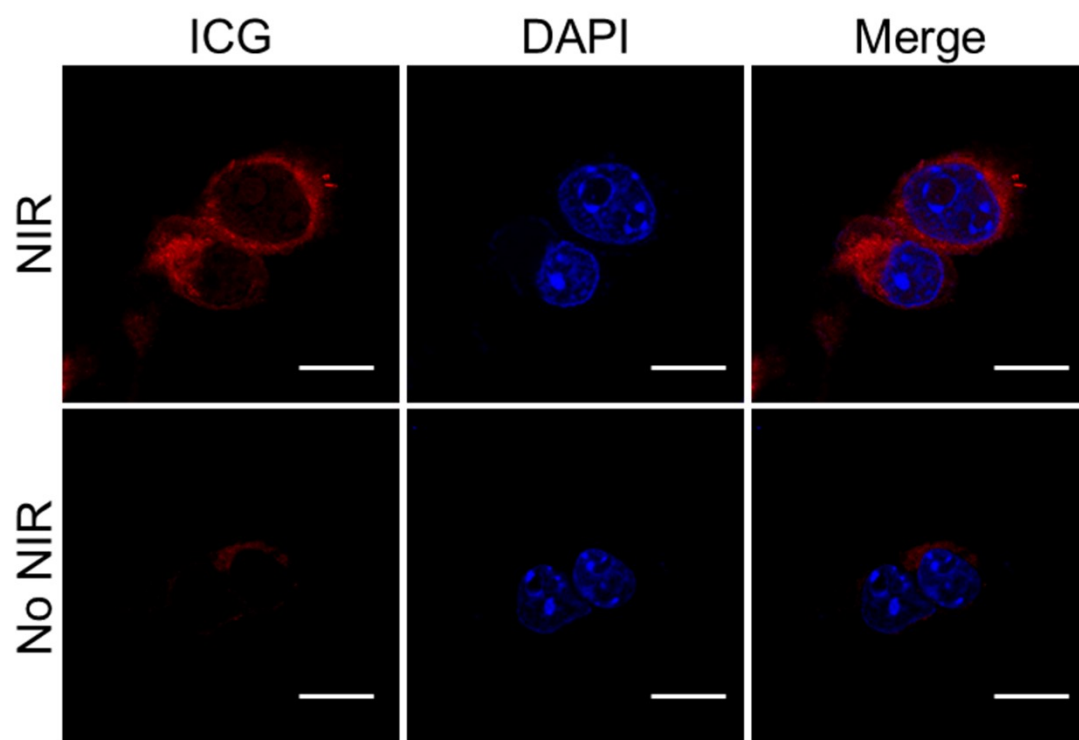
Address: No. 24, South 1st Section, 1st Ring Road, Chengdu, 610065, China



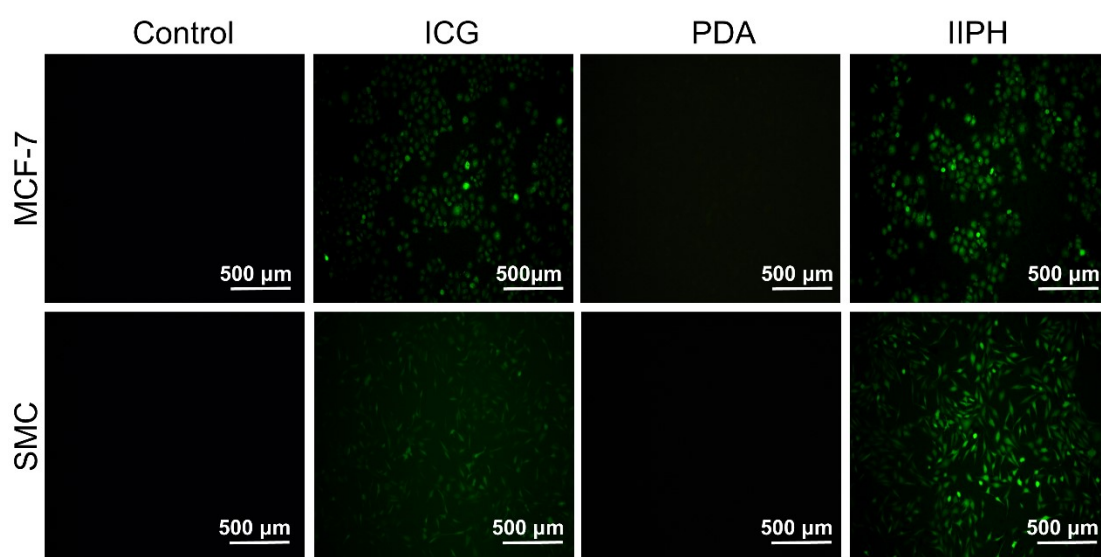
**Fig. S1.** (a) SEM image of PDA, IP, and IIP. (b) Size distribution of PDA, IP, and IIP based on SEM results.



**Fig. S2.** (a) Nanoparticles (ICG, PDA, IP, IIP, IIPH) was storage in dark for 15 days and then dispersed by DI water. The dispersions were centrifuged at 12, 000 rpm for 5 min. Pictures of ICG, PDA, IP, IIP, and IIPH solution or dispersion before and after centrifugation. (b, c) ICG release curve of IP (b) and IIP (c) at phased NIR irradiation (each inserted red and blue arrow indicates the start and the end of NIR irradiation).



**Fig. S3.** Cell uptake of IIPH by 4T1 cells analyzed by Confocal Laser Scanning Microscope (scale bars = 10  $\mu$ m).



**Fig. S4.** Intracellular ROS detection of free ICG, PDA, and IIPH with NIR irradiation (1 W/cm<sup>2</sup>, 10 min) in MCF-7 and SMC cells.