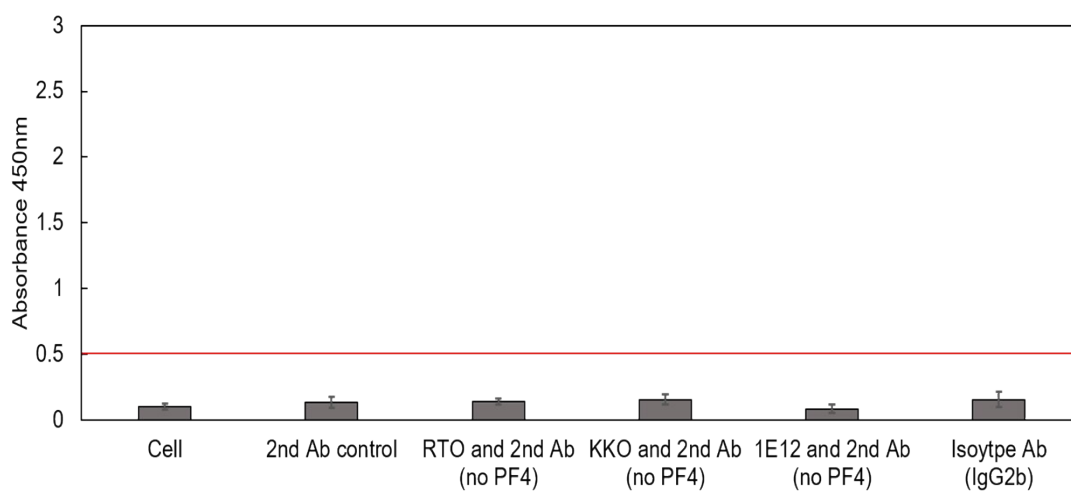


Supplementary Information



Supplement Fig. 1 Controls for cell based-ELISA. Cells alone, cells treated only with 2nd antibody, cells treated with HIT antibodies, 2nd antibodies but without PF4 or PF4/H, and cells treated with PF4, followed with isotype IgG2b antibody with 2nd antibody all showed low OD value from 0.1 to 0.15