

## Supplementary Information

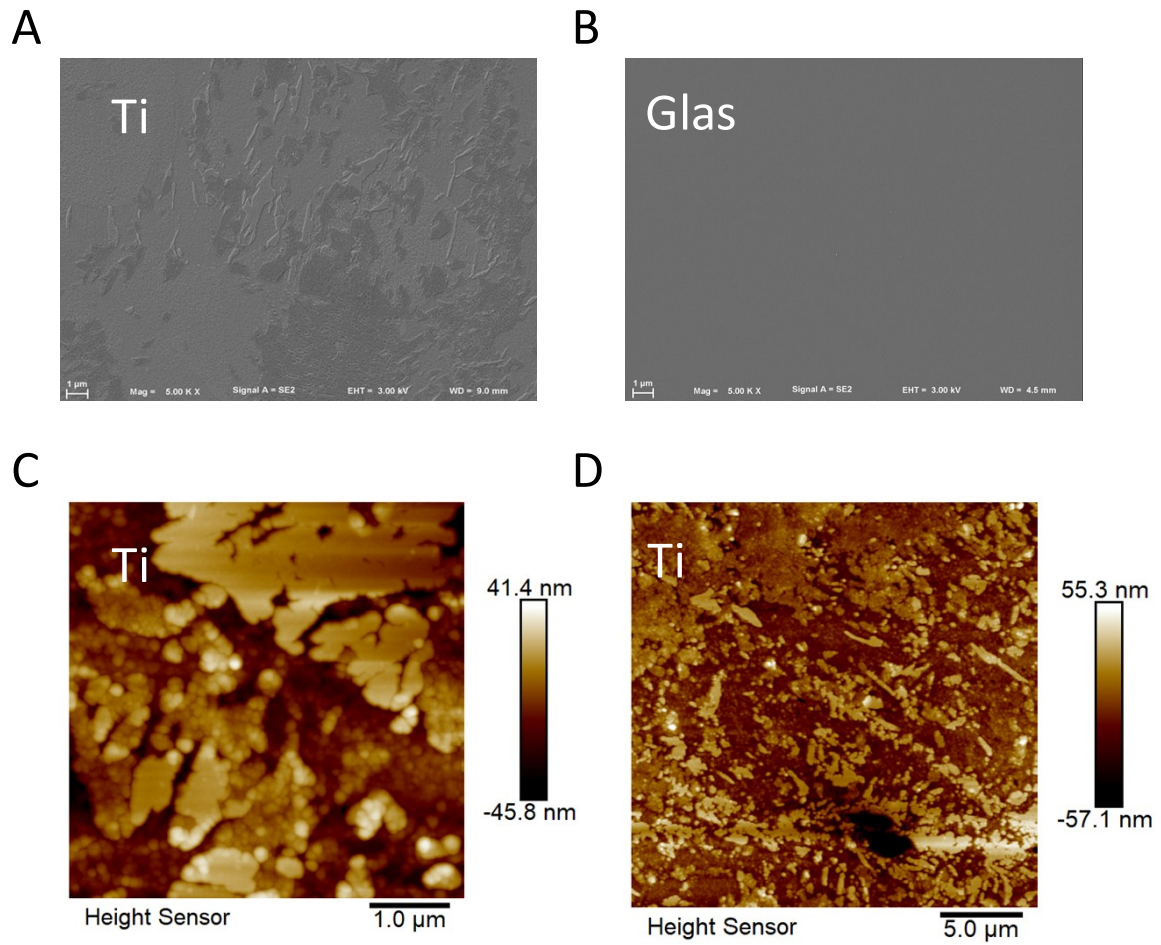
### Antibacterial nanopatterned coatings for dental implants

*R. Fontelo<sup>a,b</sup>, D. Soares da Costa<sup>a,b</sup>, Manuel Gomez-Florit<sup>a,b</sup>, Hanna Tiainen<sup>c</sup>, R. L. Reis<sup>a,b</sup>, R. Novoa-Carballal<sup>\*,a,b</sup>, I. Pashkuleva<sup>\*,a,b</sup>*

<sup>a</sup> 3B's Research Group, I3Bs – Research Institute on Biomaterials, Biodegradables and Biomimetics, University of Minho, Headquarters of the European Institute of Excellence on Tissue Engineering and Regenerative Medicine, AvePark, Parque de Ciência e Tecnologia, Zona Industrial da Gandra, 4805-017 Barco, Guimarães, Portugal;

<sup>b</sup> ICVS/3B's–PT Government Associate Laboratory, Braga/Guimarães, Portugal.

<sup>c</sup> Department of Biomaterials, Institute of Clinical Dentistry, University of Oslo, P.O. box 1109, Blindern, Oslo 0317, Norway



**Figure S1.** SEM (A, B) and AFM (C-D) images of bare titanium (A, C, D) and bare glass (B) where the differences in intrinsic micro-roughness is observed.