

Supplementary Information

An intelligent peptide recognizes and traps *Mycobacterium tuberculosis* to inhibit macrophage phagocytosis

Gui-Yuan Wang,^{ab} Bin Lu,^c Xu Cui,^{*c} Guang Li,^c Kuo Zhang^b, Qing-Shi Zhang,^b Xin Cui,^{ab} Gao-Feng Qi,^{ab} Qi-Lin Liang,^b Xiao-Bo Luo,^c Huan-Ge Xu,^b Li Xiao,^d Lei Wang^{*b} and Litao Li^{*c}

^a Department of Graduate, Hebei North University, Zhangjiakou 075000, Hebei Province, China.

^b CAS Center for Excellence in Nanoscience, CAS Key Laboratory for Biomedical Effects of Nanomaterials and Nanosafety, National Center for Nanoscience and Technology (NCNST), Beijing, 100190, China.

E-mail: wanglei@nanoctr.cn.

^c Department of Orthopedics, The 4th Medical Center of Chinese PLA General Hospital, No. 51 Fucheng road, Beijing, 100091, China.

E-mail: cuixuprossor@163.com, lltop_1@sina.com.

^d Institute of Respiratory and Critical Medicine, the Eighth Medical Center of PLA General Hospital, Beijing 100091, China.

Gui-Yuan Wang and Bin Lu contribute equally to the study.

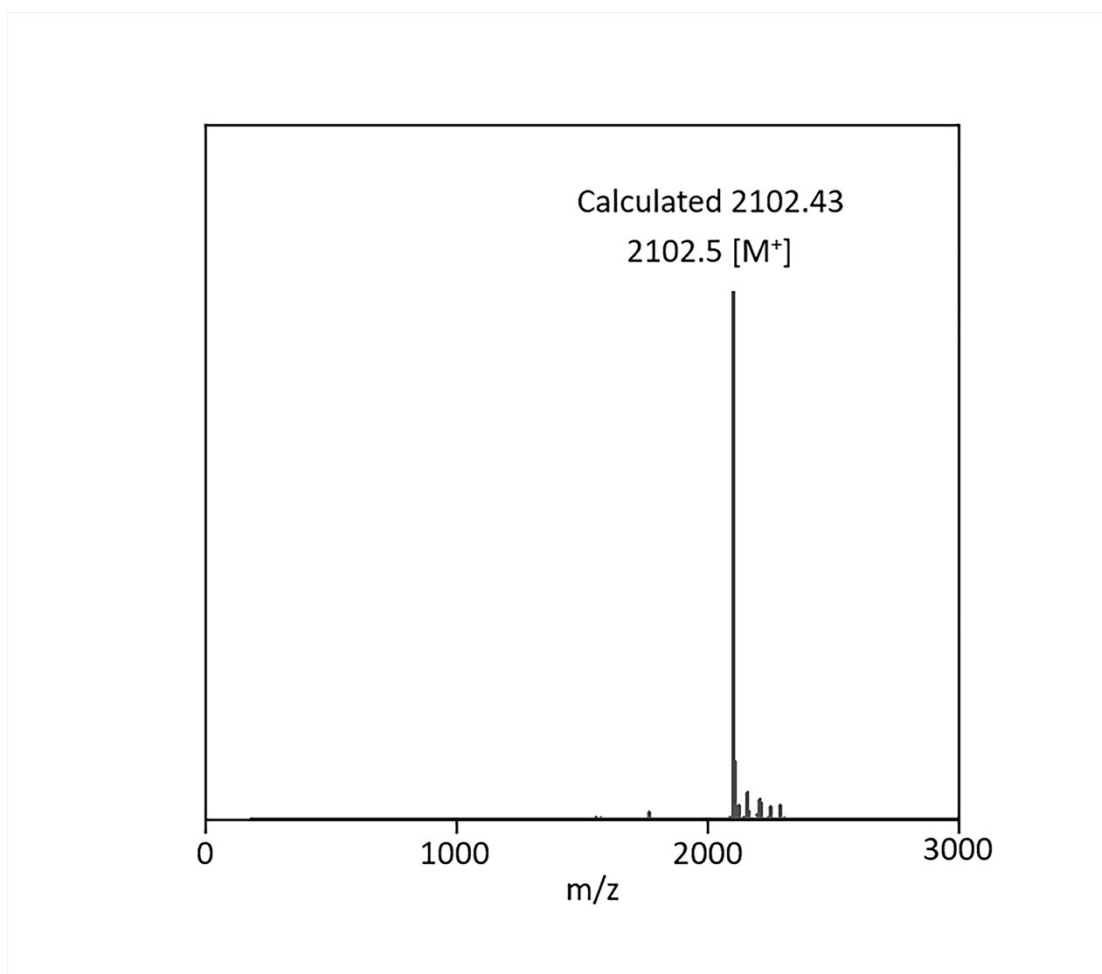


Fig S1. The MALDI-TOF-MS spectrum of BFH.

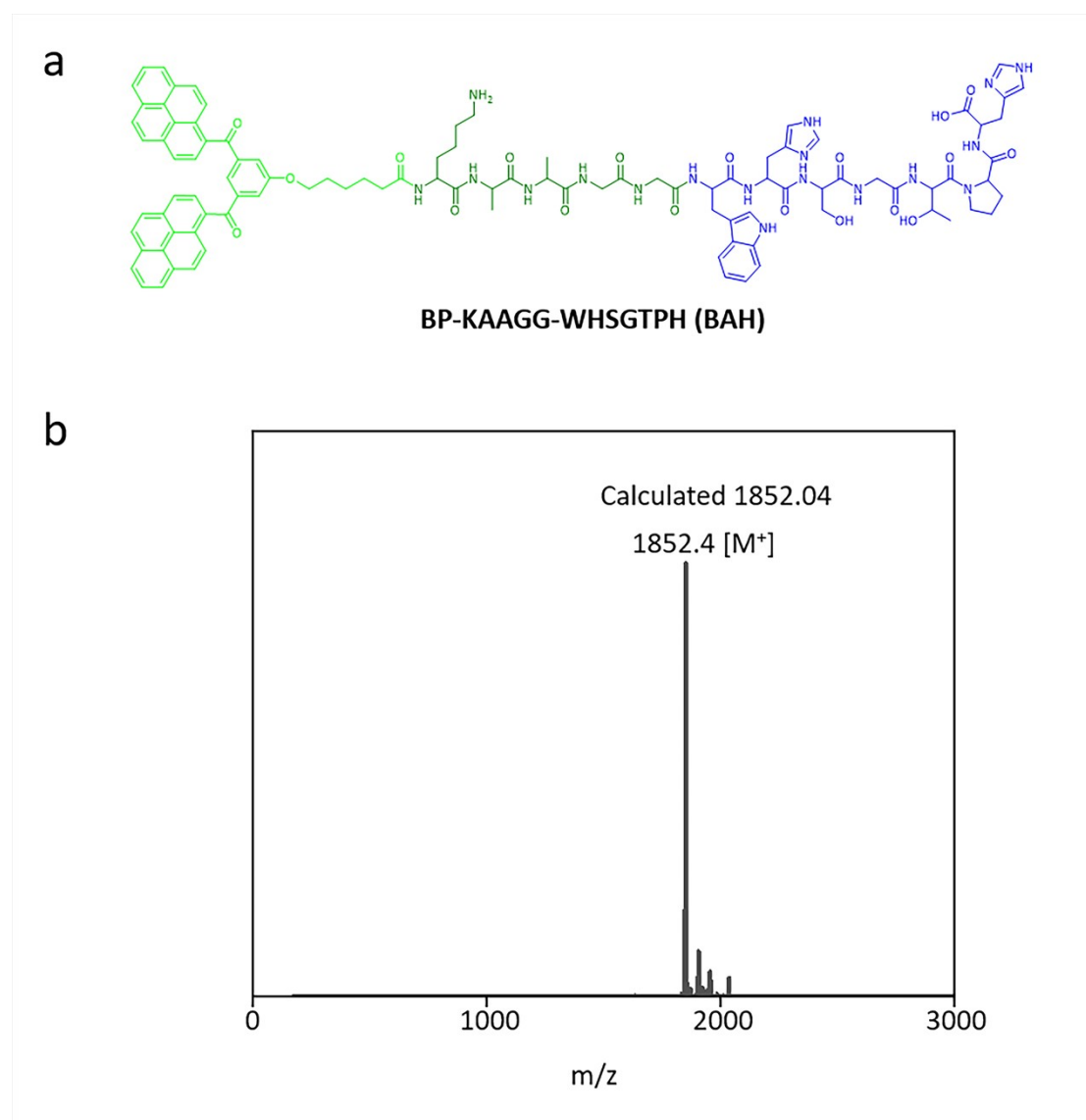


Fig S2. (a) Molecular structure of BAH. (b) The MALDI-TOF-MS spectrum of BAH.

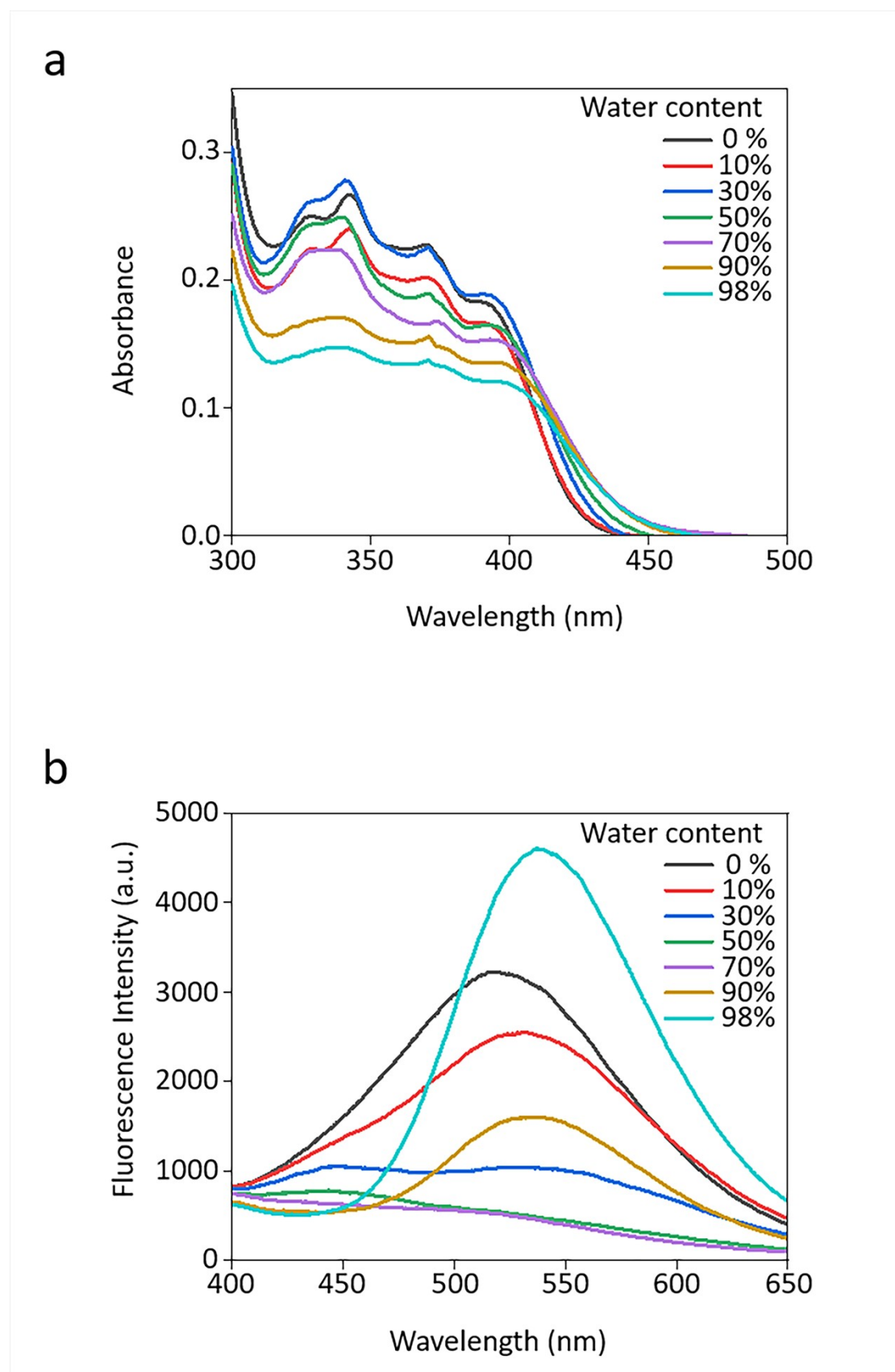


Fig S3. (a) UV-vis and (b) fluorescence spectra characteristics of self-assembly process to form BAH NPs (30 μM) in mixed $\text{H}_2\text{O}/\text{DMSO}$ solutions.

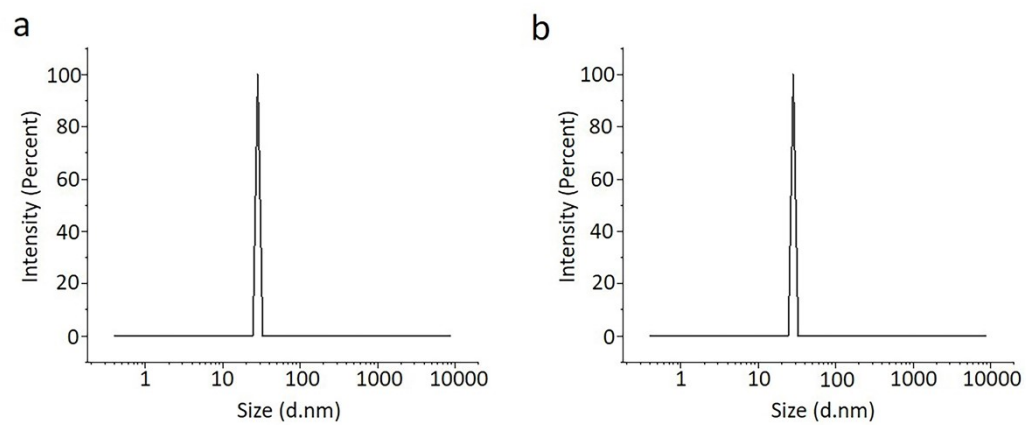
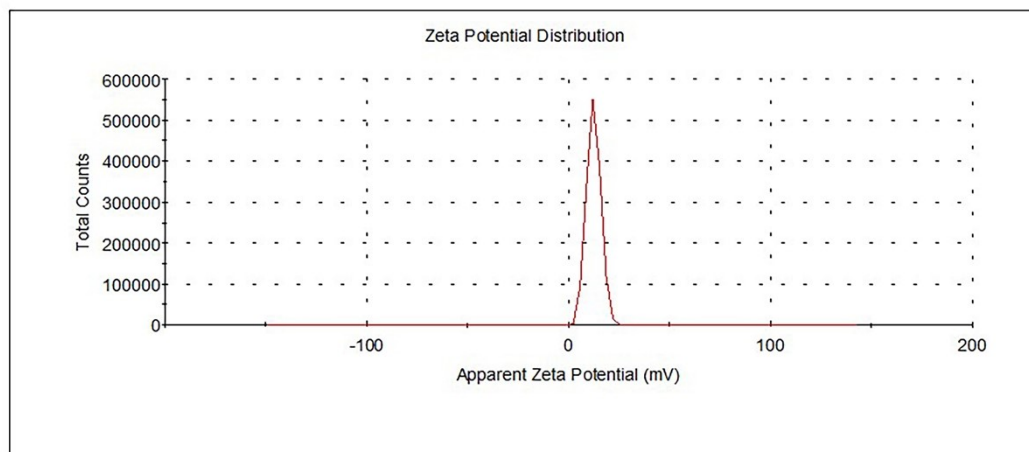


Fig S4. Particle size of (a) BFH NPs and (b) BAH NPs from DLS.

a



b

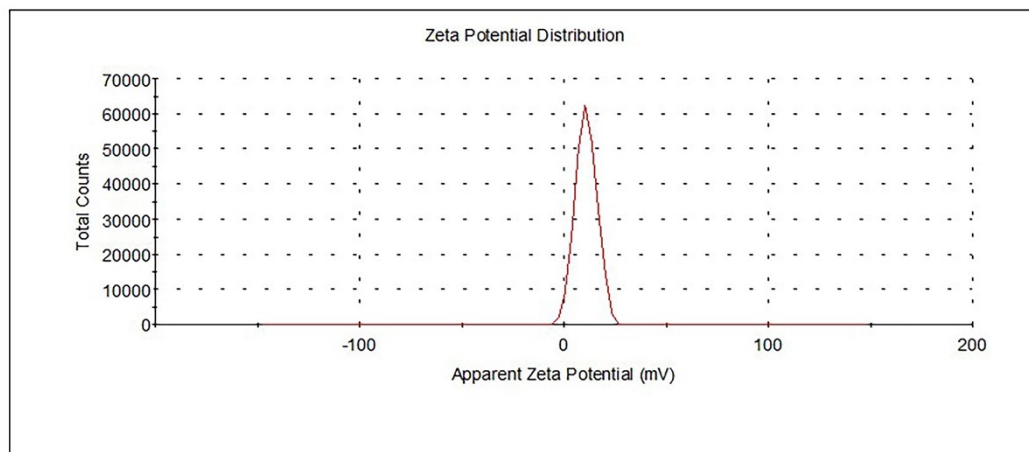


Fig S5. Zeta potential of (a) BFH NPs and (b) BAH NPs.

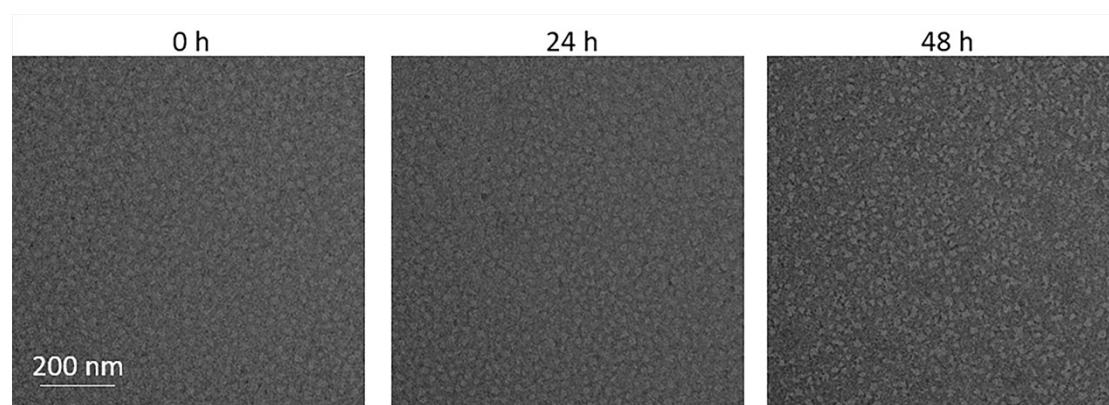


Fig S6. TEM images of BAH (30 μ M) NPs incubated with *BCG* in 48h.

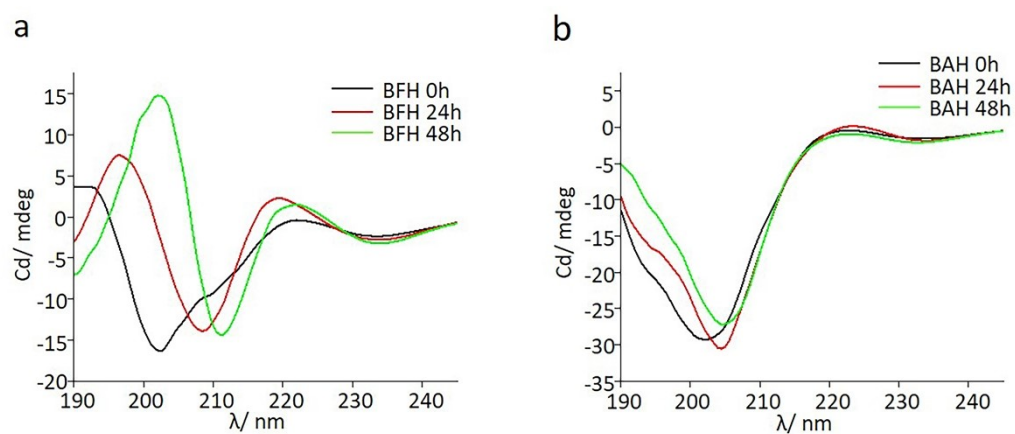


Fig S7. CD spectra of *BCG* incubated with (a) BFH and (b) BAH in water/HFIP (v/v = 99/1) at different time points.

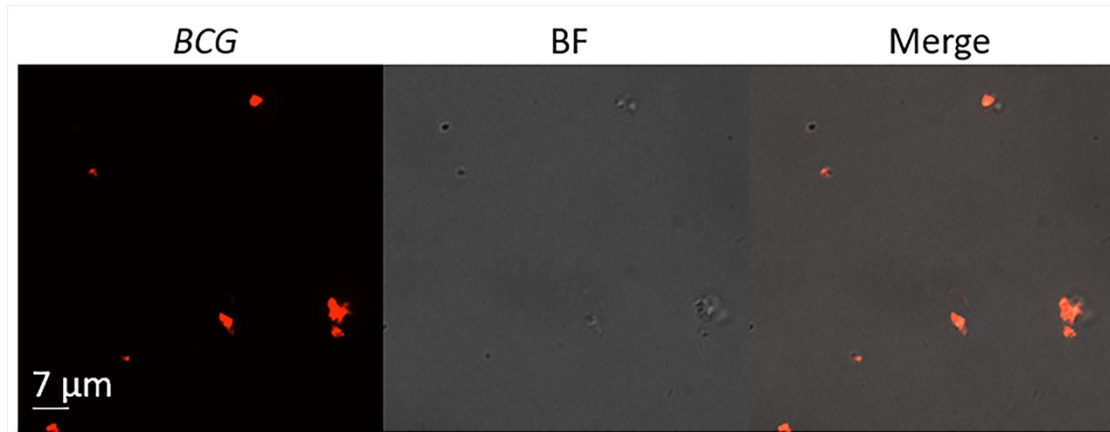


Fig S8. CLSM image of Texas red-stained *BCG*.

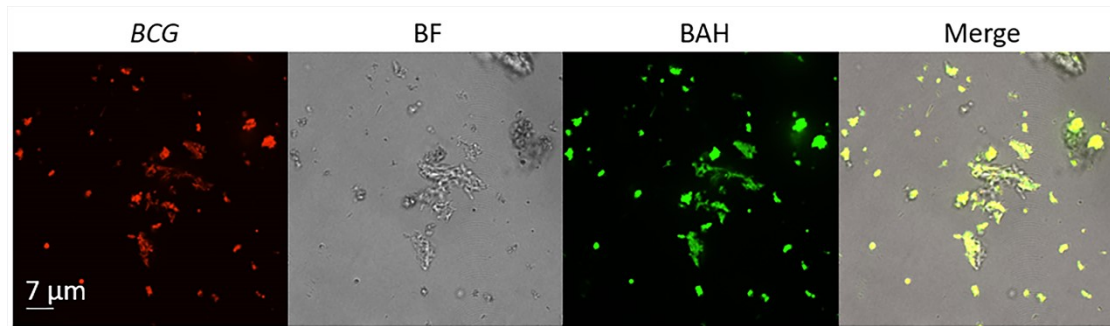


Fig S9. CLSM images of BAH (30 μM) NPs with *BCG* for 4 h. The *BCG* was stained by Texas red.

E. coli

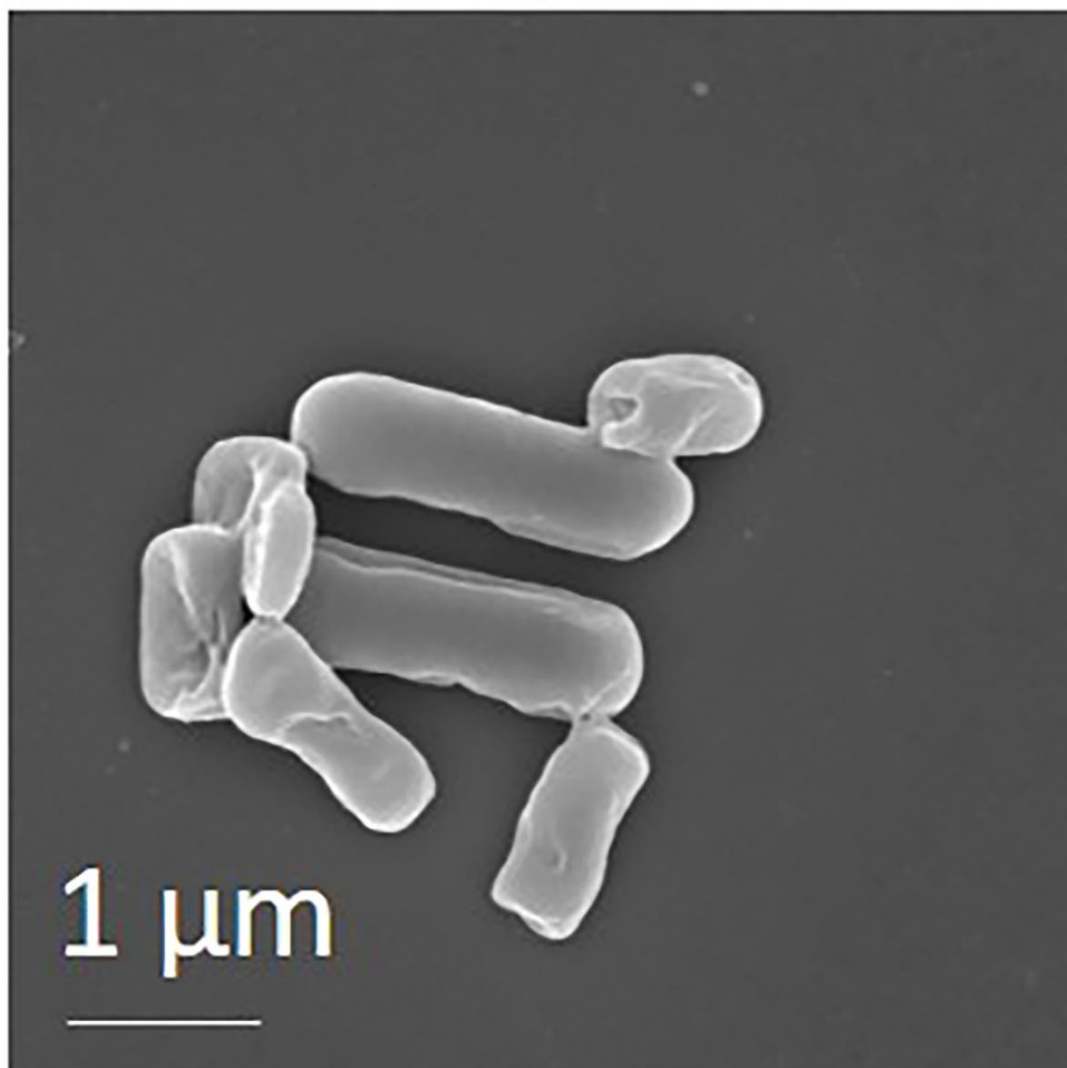


Fig S10. SEM image of BHF NPs incubated *E. coli* for 4 h.

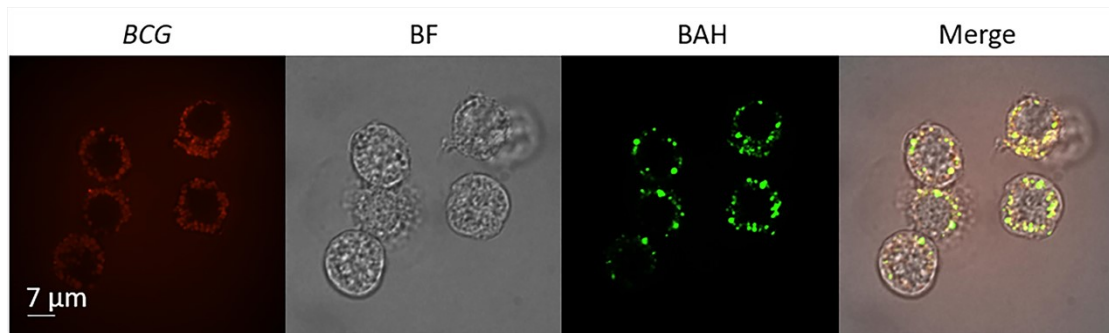


Fig S11. CLMS images of co-incubation of BAH NPs, *BCG* and macrophages.

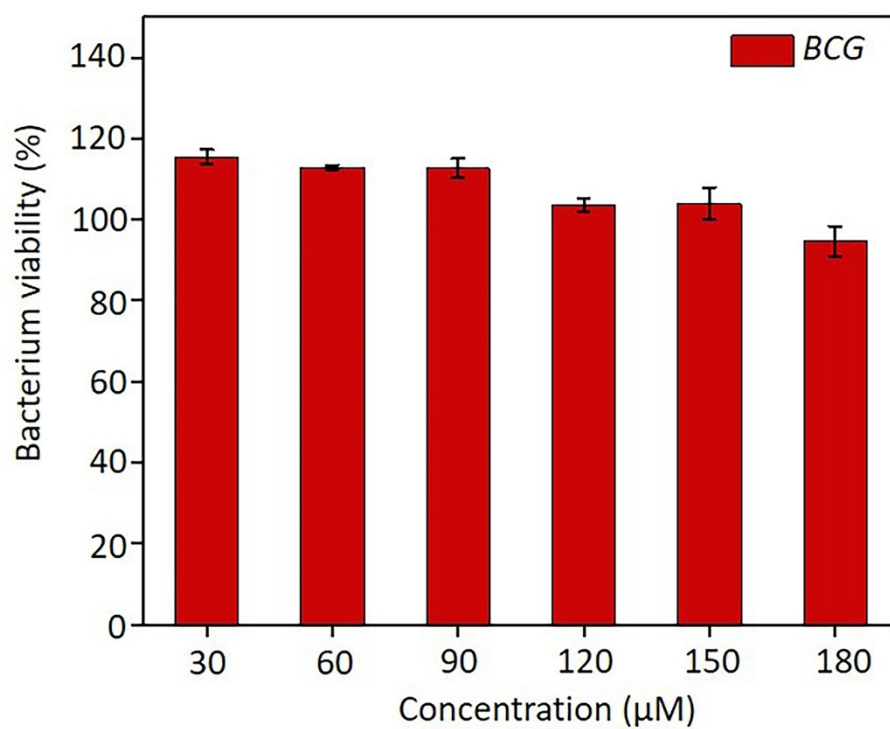


Fig S12. The toxicity of BFH NPs to *M. tuberculosis*.