

## 3D-Plotted Zinc Silicate/ $\beta$ -Tricalcium Phosphate Ceramic Scaffolds

### Enable Fast Osteogenesis by Activating p38 Signaling Pathway

Xinyuan Yuan <sup>a,b</sup>, Teliang Lu <sup>a,b,c</sup>, Fupo He <sup>d\*\*</sup>, Tingting Wu <sup>e</sup>, Xiaolan Wang <sup>e</sup>, Jiandong Ye <sup>a,b,f\*</sup>

<sup>a</sup>*School of Materials Science and Engineering and Key Laboratory of Biomedical Materials of Ministry of Education, South China University of Technology, Guangzhou 510641, China*

<sup>b</sup>*National Engineering Research Center for Tissue Restoration and Reconstruction, Guangzhou 510006, China*

<sup>c</sup>*Department of Orthopedics, Guangdong Provincial People's Hospital, Guangdong Academy of Medical Sciences, Guangzhou 510080, China*

<sup>d</sup>*School of Electromechanical Engineering, Guangdong University of Technology, Guangzhou 510006, China*

<sup>e</sup>*National Engineering Research Center for Healthcare Devices, Guangdong Key Lab of Medical Electronic Instruments and Polymer Material Products, Institute of Biological and Medical Engineering, Guangdong Academy of Sciences, Guangzhou 510316, China*

<sup>f</sup>*Key Laboratory of Biomedical Engineering of Guangdong Province and Innovation Center for Tissue Restoration and Reconstruction, South China University of Technology, Guangzhou 510641, China*

\*Corresponding author

\*\*Corresponding author

E-mail addresses: [jdye@scut.edu.cn](mailto:jdye@scut.edu.cn) (J. Ye), [fphe@gdut.edu.cn](mailto:fphe@gdut.edu.cn) (F. He).

Table S1 Primer sequence used for the RT-qPCR analysis

Cell	Gene	Forward primer (5'-3')	Reverse primer (3'-5')
	GAPDH	TGTGTCCGTCGTGGATCTGA	TTGCTGTTGAAGTCGCAGGAG
	RUNX- 2	CACTGGCGGTGCAACAAGA	TTTCATAACAGCGGAGGCATTTC
mBMSCs	ALP	TGCCTACTTGTGTGGCGTGAA	TCACCCGAGTGGTAGTCACAATG
	OCN	AGCAGCTTGGCCCAGACCTA	TAGCGCCGGAGTCTGTTCACTAC
	COL-1	ATGCCGCCACCTCAAGATG	TGAGGCACAGACGGCTGAGTA
	BSP	AGAACAATCCGTGCCACTCACTC	AGTAGCGTGGCCGGTACTTAAAGA
	GAPDH	CCACATCGCTCAGACACCAT	GGCAACAATATCCACTTTACCAG
HUVECs	HIF	CCATGTGACCATGAGGAAAT	CGGCTAGTTAGGGTACACTT
	eNOS	TGATGGCGAAGCGAGTGAAG	ACTCATCCATACACAGGACCC
	KDR	GTGATCGGAAATGACACTGGAG	CATGTTGGTCACTAACAGAAGCA

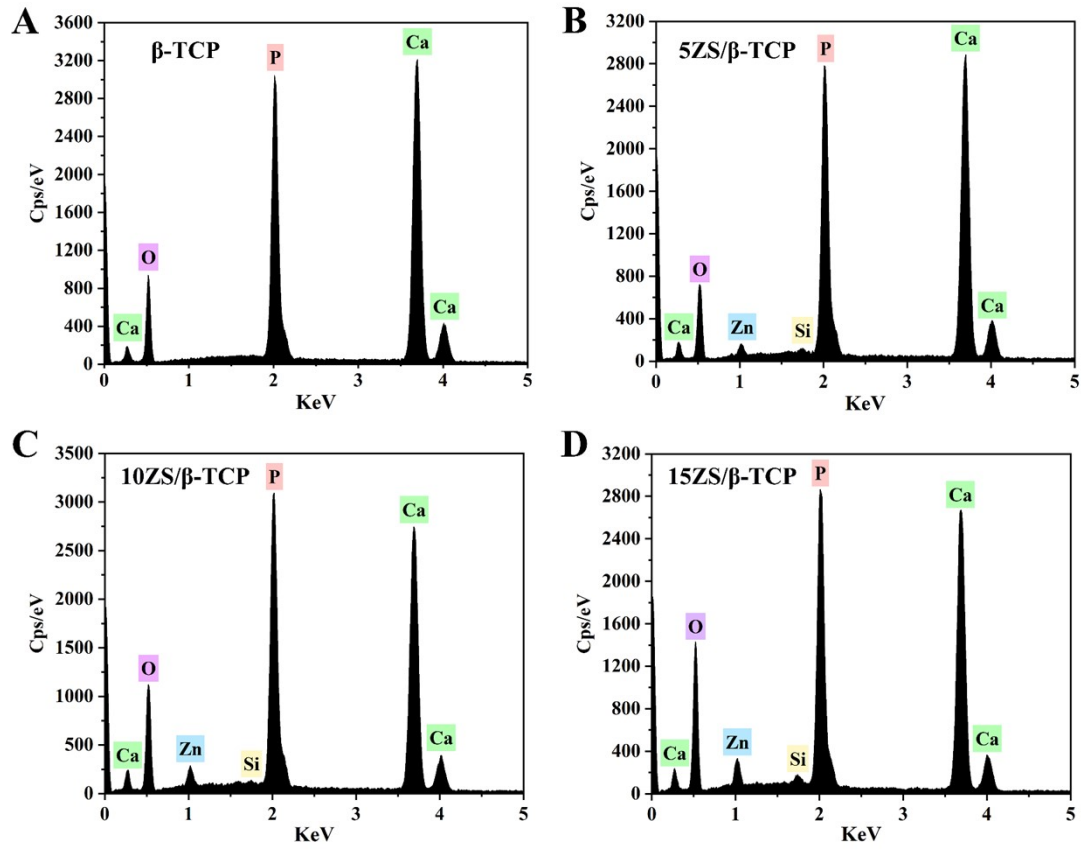


Figure S1 EDS analysis of  $\beta$ -TCP ceramic scaffolds with and without ZS.