

Supporting Information

3D printed reduced graphene oxide-GelMA hybrid hydrogel scaffolds for potential neuralized bone regeneration

*Xinwei Zhang,^{ab} Hao Zhang,^{ab} Yi Zhang,^{ab} Huimin Huangfu,^{ab} Yixin Yang,
^{ab} Qiuyue Qin,^{ab} Yidi Zhang^{*ab} and Yanmin Zhou^{*ab}*

* Corresponding authors

^a Hospital of Stomatology, Jilin University, Changchun 130000,
China

^b Jilin Provincial Key Laboratory of Tooth Development and Bone
Remodeling, Jilin University, Changchun 130000, China

E-mail: zhangyidi@jlu.edu.cn(Yidi Zhang) ;

zhouym@jlu.edu.cn(Yanmin Zhou)

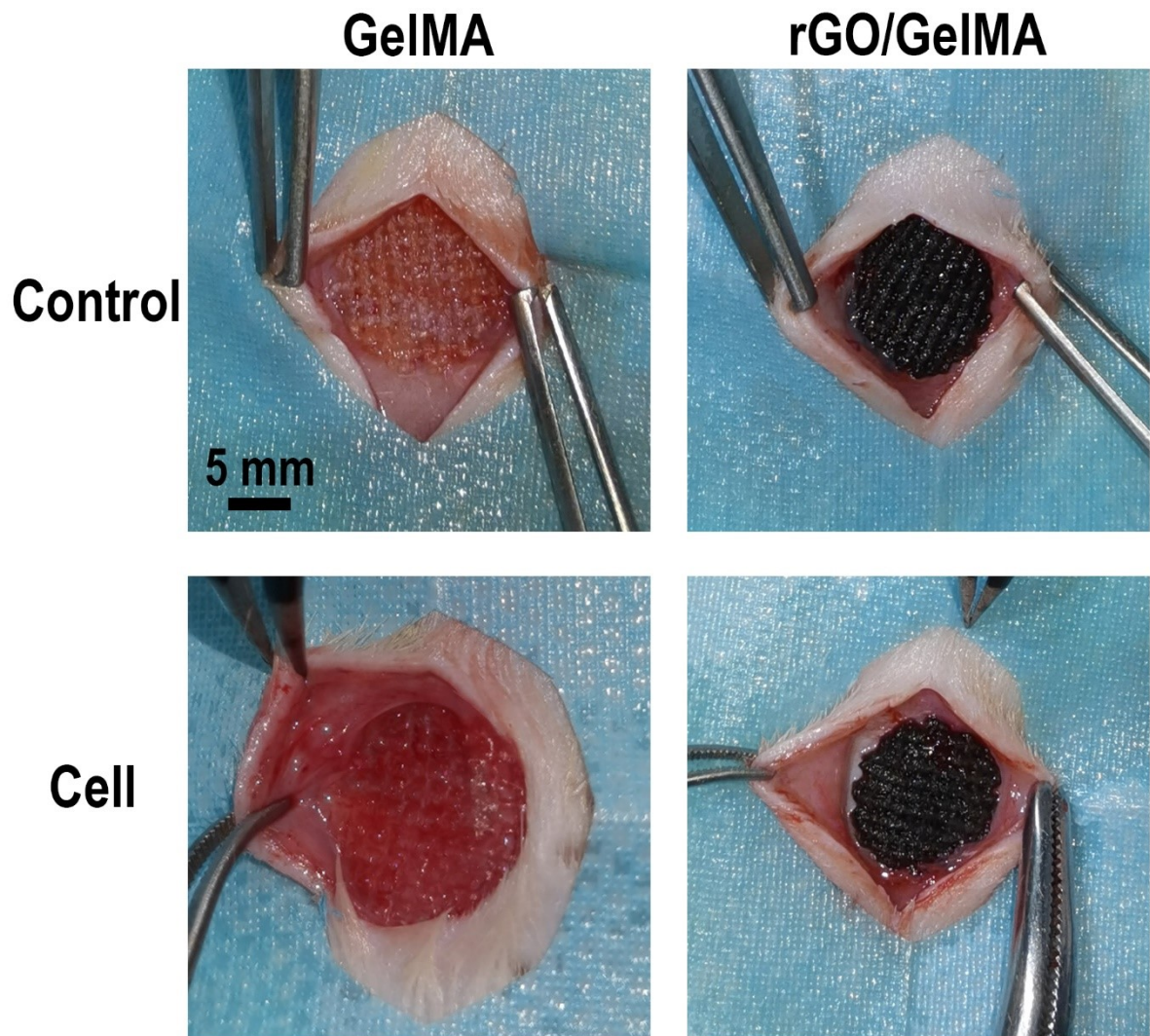


Figure. S1 Photographs of the rat subcutaneous transplantation model.

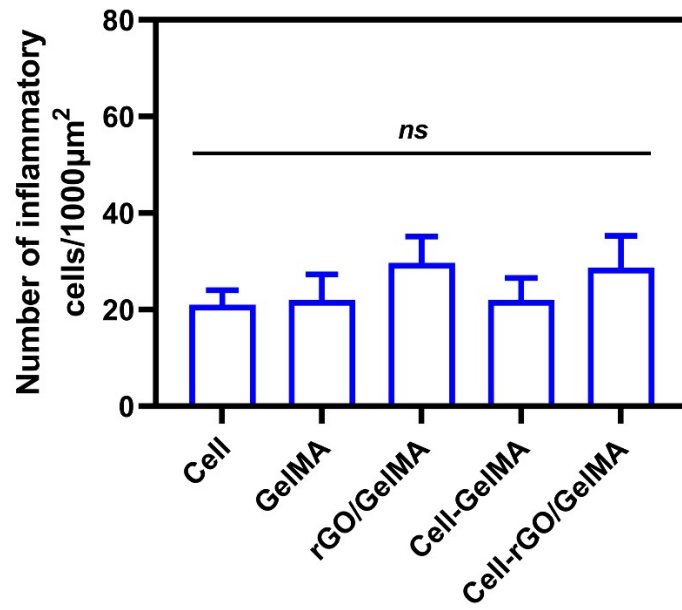


Figure. S2 The number of inflammatory cells in the tissue sections of each group ($n=3$, ns = not significant).

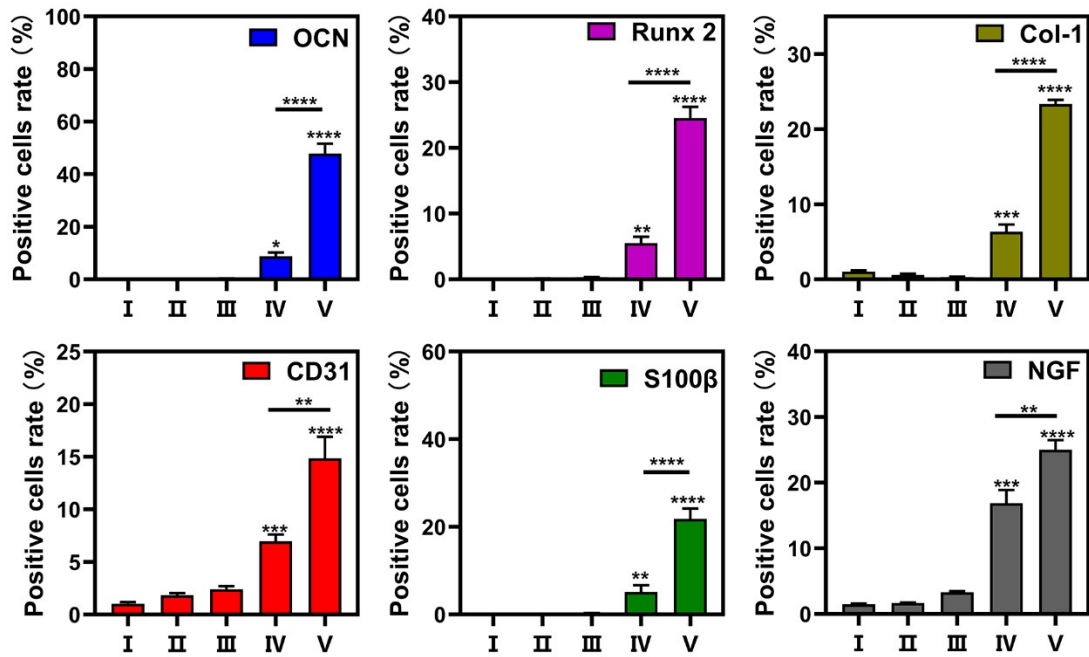


Figure. S3 Statistical charts of immunohistochemistry and immunofluorescence positive cells in each group 8 weeks after operation. $p < 0.05$ indicates a significant difference ($n=3$, $*p < 0.05$, $**p < 0.01$, $***p < 0.001$, $****p < 0.0001$, ns = not significant).

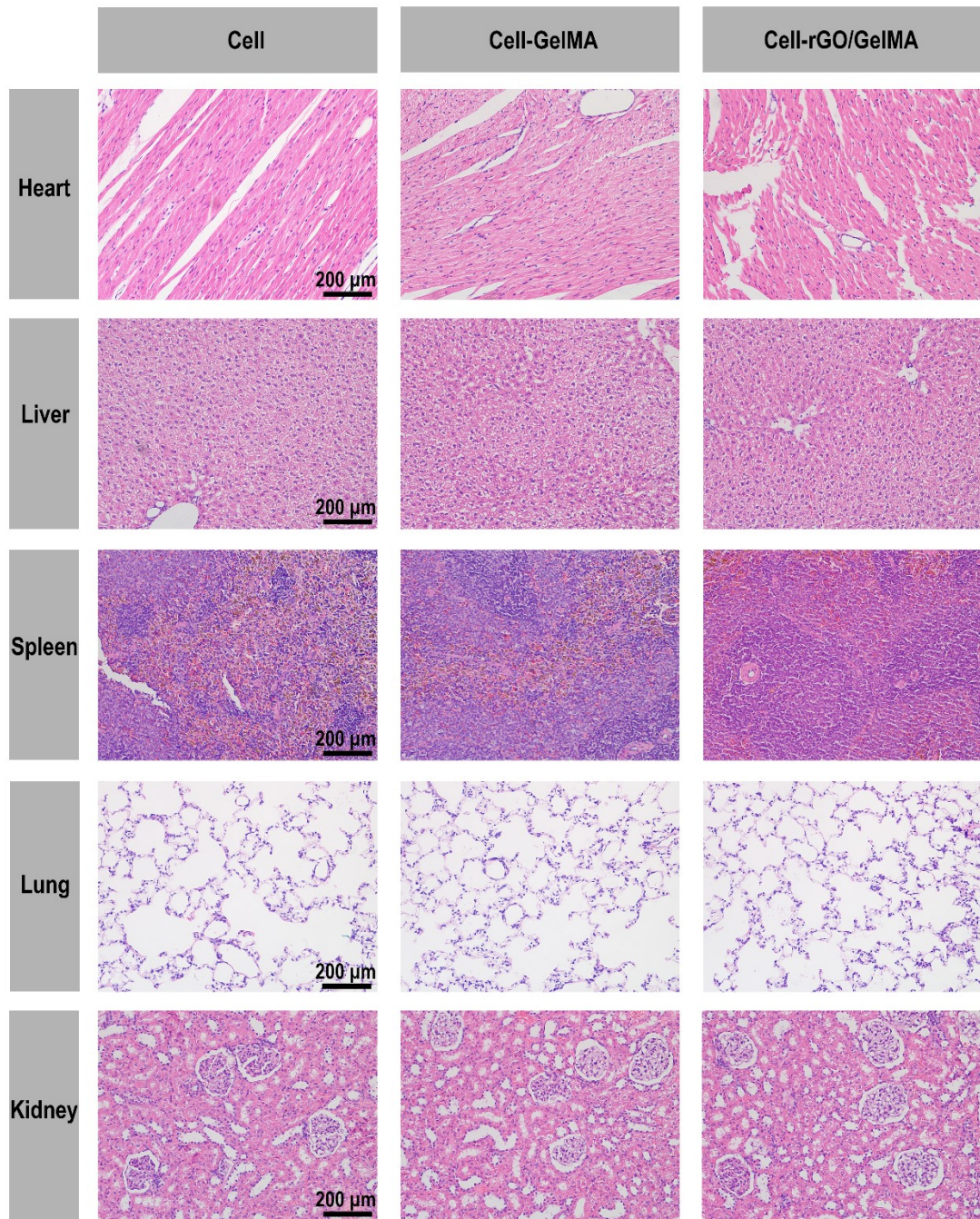


Figure. S4 H&E staining of heart, liver, spleen, lung and kidney of experimental animals in each group at 8 weeks after operation.

Table S1. Primer sequences of the genes for qRT-PCR analysis.

Primers	Forward sequence (5'-3')		Reverse sequence (5'-3')	
	NGF	TGATCGGCGTACAGGCAGA		GAGGGCTGTGTCAAGGGAAT
PMP22	TGTACCACATCCGCCTTGG		GAGCTGGCAGAAGAACAGGAAC	
NCAM	TTCAGTGACGACAGTTCGGAGC		TGCGAAGACCTTGAGGTGGAT	
Krox20	TTTTTCCATCTCCGTGCCA		GAACGGCTTTCGATCAGGG	
RUNX2	CATGGCCGGGAATGATGAG		TGTGAAGACCGTTATGGTCAAAGTG	
OCN	AAGCAGGAGGGCAATAAGGT		CCGTAGATGCGTTTGTAGGC	
ALP	CATCGCCTATCAGCTAATGCACA		ATGAGGTCCAGGCCATCCAG	
Col-1	GACATGTTTCAGCTTTGTGGACCTC		AGGGACCCTTAGGCCATTGTGTA	
GAPDH	AGGTCGGTGTGAACGGATTTG		TGTAGACCATGTAGTTGAGGTCA	

Table S2. Specific values of each group of compression strain tests.

Groups	Limiting Stress (kPa)		Limiting Strain (%)		Compressive modulus (kPa)	
	Mean \pm SD	<i>p</i> Value	Mean \pm SD	<i>p</i> Value	Mean \pm SD	<i>p</i> Value
GelMA	90.52 \pm 8.94		63.33 \pm 5.14		29.33 \pm 0.91	
0.03rGO/G	125.90 \pm 9.29	<i>p</i> > 0.05	73.33 \pm 4.71	<i>p</i> > 0.05	32.40 \pm 1.64	<i>p</i> > 0.05
0.05rGO/G	174.26 \pm 23.78	<i>p</i> < 0.05	79.17 \pm 1.18	<i>p</i> < 0.05	34.87 \pm 2.19	<i>p</i> < 0.05
0.1rGO/G	51.01 \pm 7.95	<i>p</i> > 0.05	70.67 \pm 4.92	<i>p</i> > 0.05	15.27 \pm 1.84	<i>p</i> < 0.05

Table S3. Specific values of storage modulus under 405 nm illumination for 60 seconds.

Groups	Mean \pm SD	<i>p</i> Value
GelMA	12.40 \pm 0.46	
0.03rGO/G	16.75 \pm 1.49	<i>p</i> > 0.05
0.05rGO/G	22.49 \pm 5.49	<i>p</i> < 0.05
0.1rGO/G	8.96 \pm 2.42	<i>p</i> > 0.05