

## Supplementary information

### **A nitric oxide responsive AIE probe for detecting the progression of osteoarthritis**

Pan Jin,<sup>a d†</sup> Guojie Xu,<sup>e†</sup> Xichi Chen,<sup>a†</sup> Shi-Cheng Li,<sup>f</sup> Lin Cheng,<sup>a</sup> Ping Sui,<sup>a</sup> Jiaqi Ye,<sup>a</sup> Xuerui Yang,<sup>a</sup> Shanshan Xi,<sup>a\*</sup> Fabiao Yu<sup>b c\*</sup> and Tongmeng Jiang<sup>b c\*</sup>

- a. Health Science Center, Yangtze University, Jingzhou 434023, Hubei, China.*
- b. Key Laboratory of Hainan Trauma and Disaster Rescue, The First Affiliated Hospital of Hainan Medical University, Hainan Medical University, Haikou 571199, China.*
- c. Key Laboratory of Emergency and Trauma, Ministry of Education, Engineering Research Center for Hainan Bio-Smart Materials and Bio-Medical Devices, Key Laboratory of Hainan Functional Materials and Molecular Imaging, College of Emergency and Trauma, Hainan Medical University, Haikou 571199, China.*
- d. Collaborative Innovation Centre of Regenerative Medicine and Medical Bio Resource Development and Application Co-constructed by the Province and Ministry, Guangxi Medical University, Nanning 530021, Guangxi, China.*
- e. Department of Orthopaedics Trauma and Hand Surgery, The First Affiliated Hospital of Guangxi Medical University, Nanning 530021, Guangxi, China.*
- f. Department of Cardiology, The People's Hospital of Guangxi Zhuang Autonomous Region; Institute of Cardiovascular Sciences, Guangxi Academy of Medical Sciences, Nanning, 530021, China.*

**† Pan Jin, Guojie Xu and Xichi Chen contributed equally to this study.**

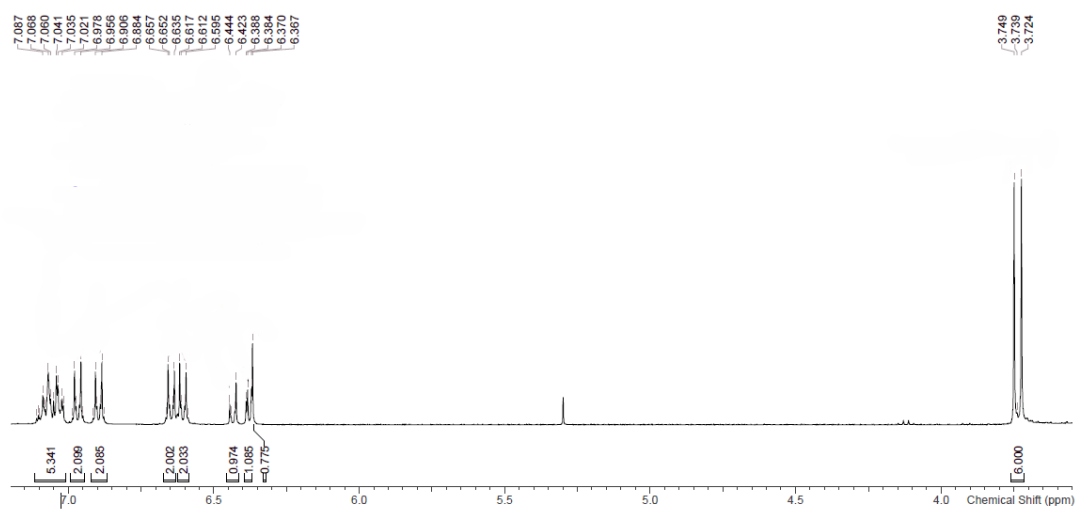
**\* Co-correspondence:**

Tongmeng Jiang, E-mail address: jiangtongmeng@hainmc.edu.cn.

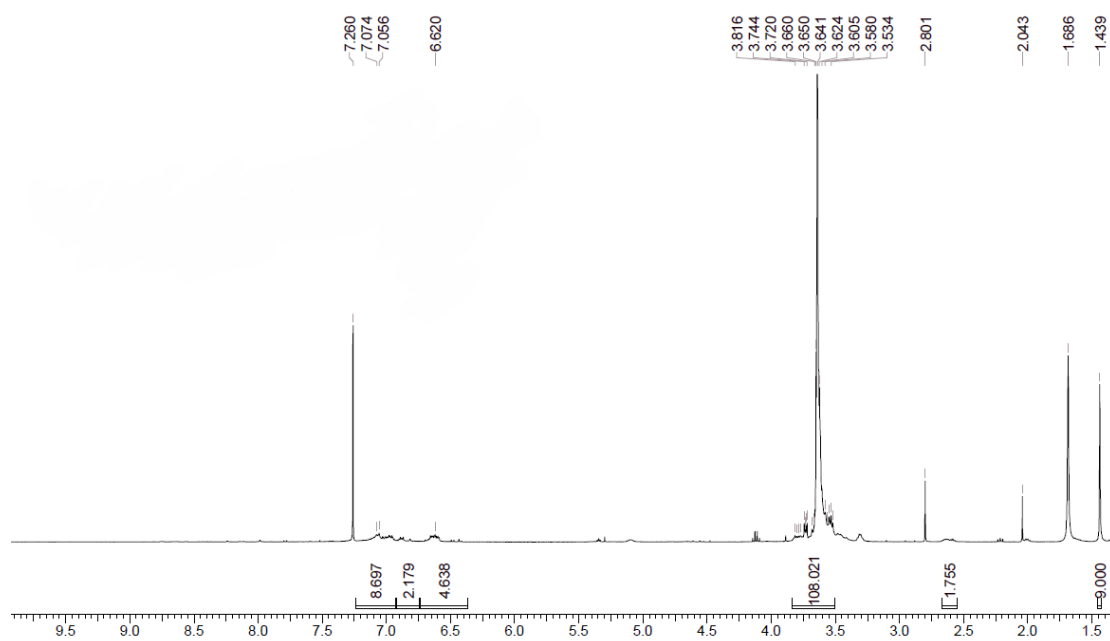
Shanshan Xi, E-mail address: ss895867841@163.com.

Fabiao Yu, E-mail address: yufabiao@hainmc.edu.cn.

## Supplementary information

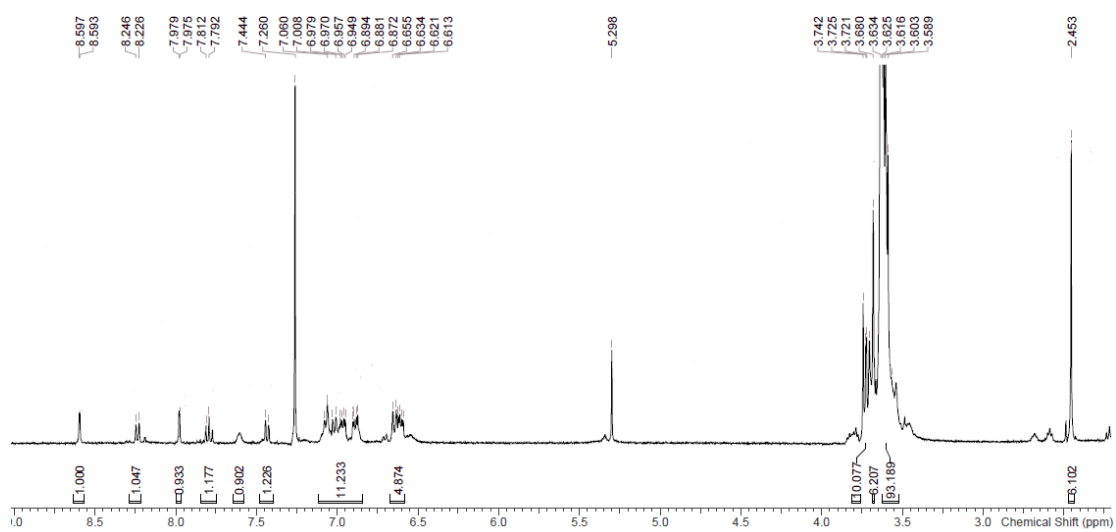


**Figure S1.**  $^1\text{H-NMR}$  spectrum of TPE-2NH<sub>2</sub>.



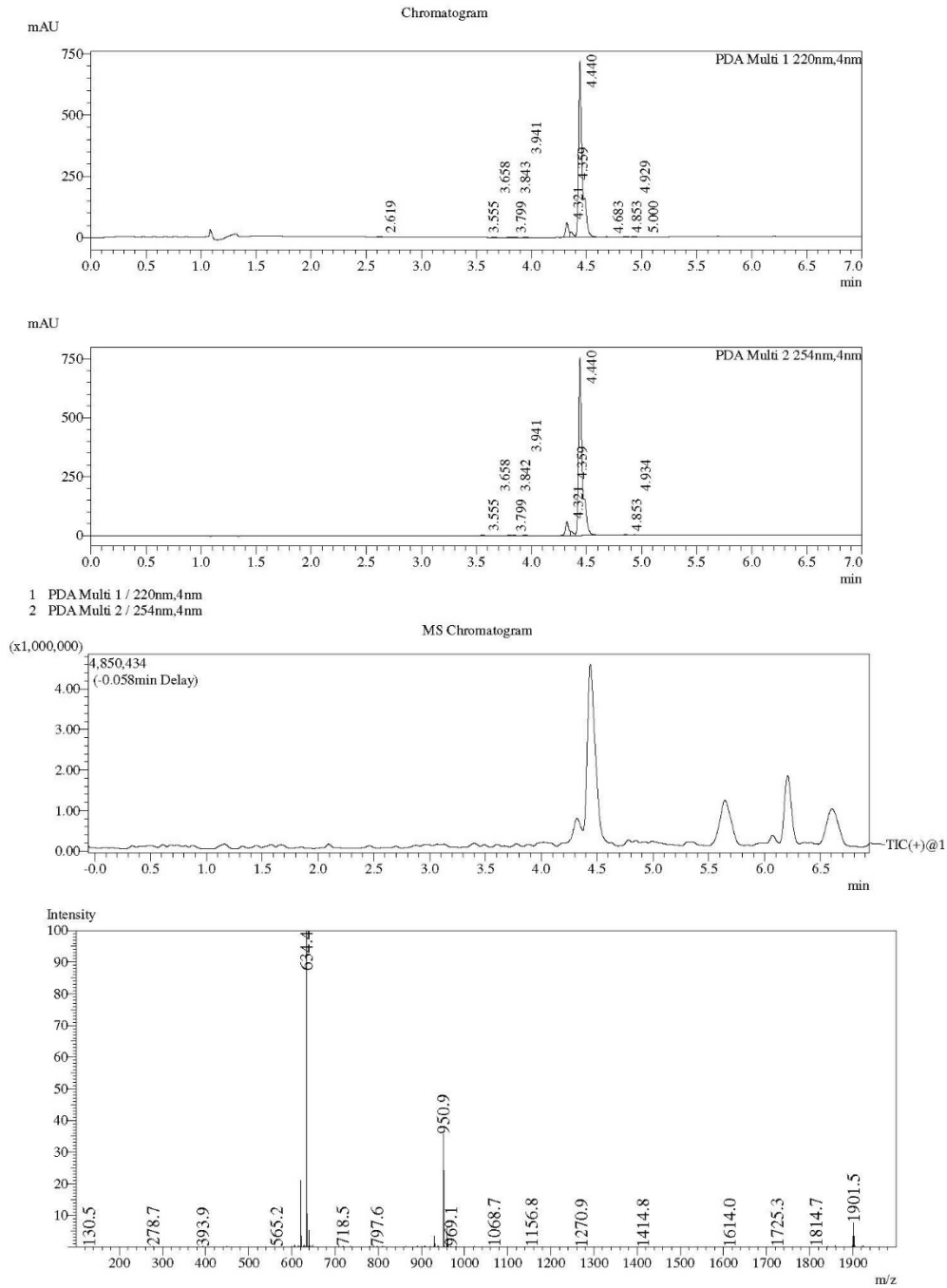
**Figure S2.**  $^1\text{H-NMR}$  spectrum of TPE-2NHCOCH<sub>2</sub>CH<sub>2</sub>-(PEG)<sub>24</sub>-NHBoc.

# Supplementary information



**Figure S3.**  $^1\text{H-NMR}$  spectrum of TPE-2NHCOCH<sub>2</sub>CH<sub>2</sub>-(PEG)<sub>24</sub>-NH-Diacerein.

# Supplementary information



**Figure S4.** LC-MS spectrum of TPE-2NHCOCH<sub>2</sub>CH<sub>2</sub>-(PEG)<sub>24</sub>-NH-Diacerein.

## Supplementary information



**Figure S5.** The reaction of 10  $\mu$ M AIE probe to NO and other different ions; \*\*\*\* indicates the difference compared to blank, #, ##, ###, #### indicate the differences compared to NO. #,  $p < 0.05$ ; ##,  $p < 0.01$ ; ###,  $p < 0.001$ ; \*\*\*\* and ####,  $p < 0.0001$ .