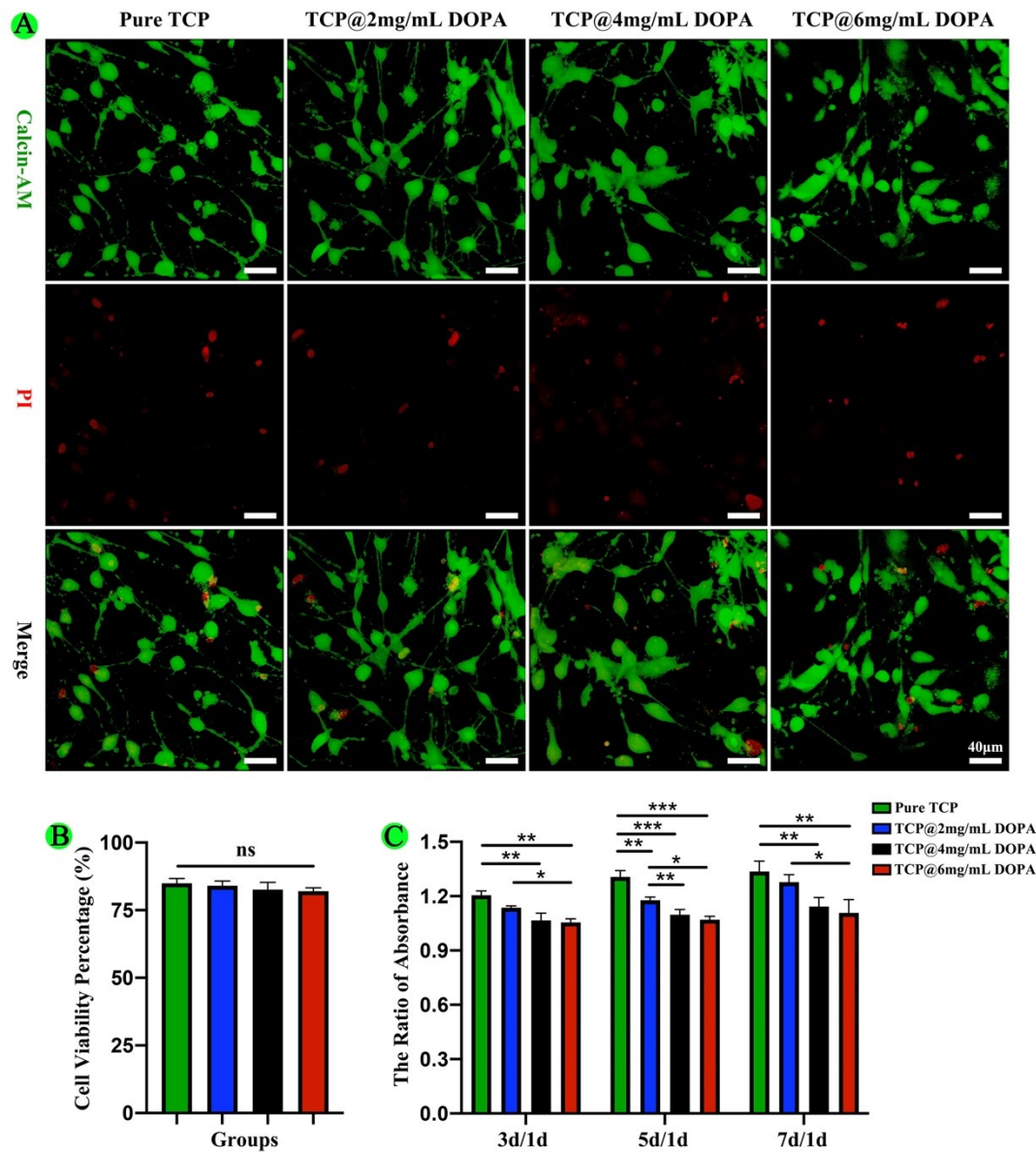


Supplemental Table 1. Primer sequences of rat genes used for qRT-PCR.

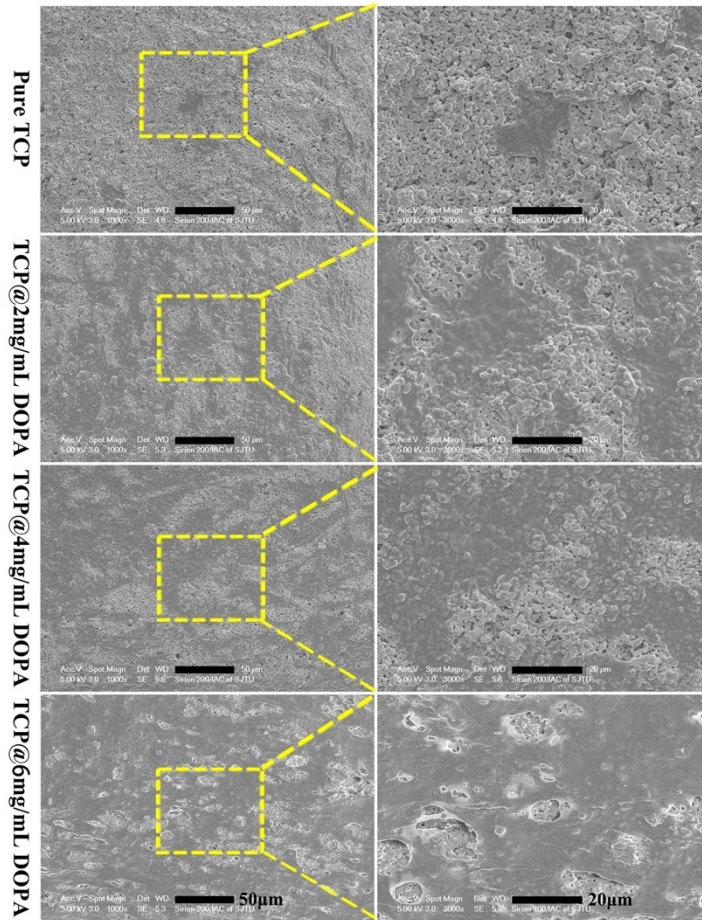
Gene	Forward sequence	Reverse sequence
<i>Runx2</i>	AACCCTTAATTTGCACTGGGTCA	CAAATTCCAGCAATGTTTGTGCTAC
<i>OPN</i>	GCCGAGGTGATAGTGTGGTT	ACTCCTCGCTTTCATGTGT
<i>Col1</i>	CGATGGATTCCAGTTCGAG	TAGGTGATGTTCTGGGAGGC
<i>BSP</i>	TACGAACAAATAGGCAACGAGT	TTCGTCCTCATAAGCTCGGTAA
<i>GAPDH</i>	AACAGCGACACCCACTCCTC	CATACCAGGAAATGAGCTTGACAA

Supplemental Table 2. EDS results for carbon in the different groups.

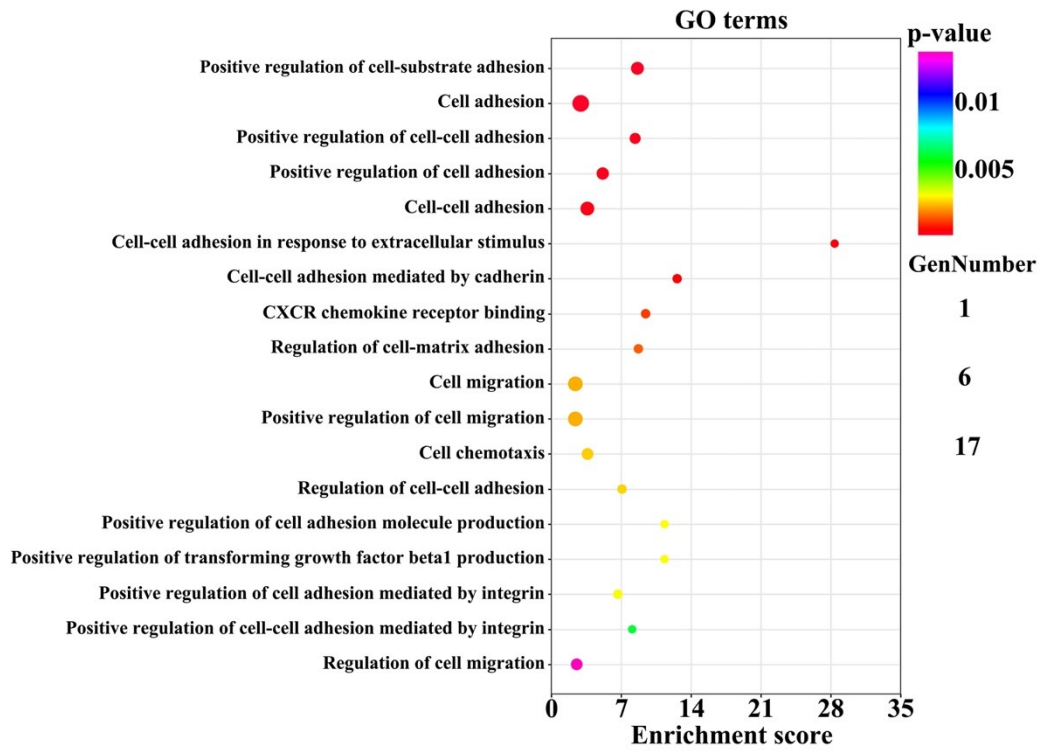
Groups	Weight percentage (%)	Atomic percentage (%)
Pure TCP	6.46	11.38
TCP@2mg/ml DOPA	16.66	28.61
TCP@4mg/ml DOPA	27.15	38.36
TCP@6mg/ml DOPA	35.77	51.37



Supplemental Figure 1. Viability of BMSCs seeded on PDA-coated 3D-printed scaffolds. (A) Live–dead cell staining; (B) percentage cell viability; (C) CCK-8 test (* $P < 0.05$, ** $P < 0.01$, and *** $P < 0.001$).



Supplemental Figure 2. Adhesion of BMSCs seeded on the surface of different 3D-printed scaffolds. SEM morphology of BMSCs on the surface of different groups (the wine-red marked pictures are shown in Figure 3A).



Supplemental Figure 3. GO terms related to the adhesion of seeded BMSCs.