

Engineering ROS-Scavenging Prussian Blue Nanozymes for Efficient Atherosclerosis Nanotherapy

*Xiaoying Chen^a, Chen Dai^a, Ruizhi Hu^a, Luodan Yu^{*b}, Yu Chen^{*b} and Bo Zhang^{*a}*

^aDepartment of Ultrasound, Shanghai East Hospital, Tongji University, Shanghai
200120, P. R. China.

^bMaterdicine Lab, School of Life Sciences, Shanghai University, Shanghai 200444, P. R.
China.

Supplementary figures

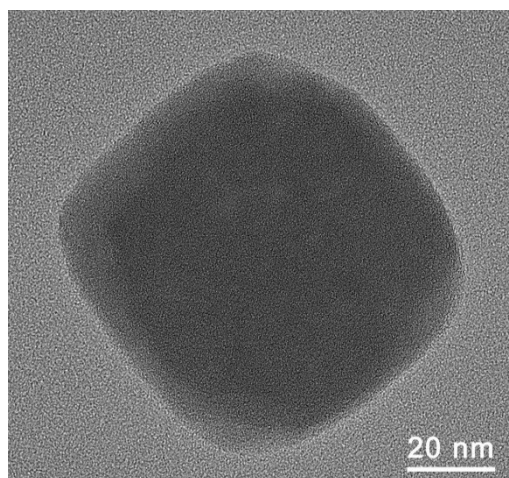


Figure S1. Bright-field TEM image of a single n-PBE.

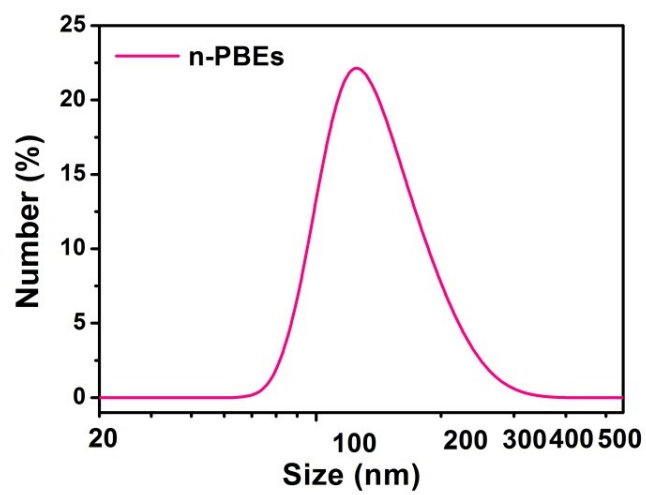


Figure S2. Dynamic light scattering of n-PBEs in aqueous solution.

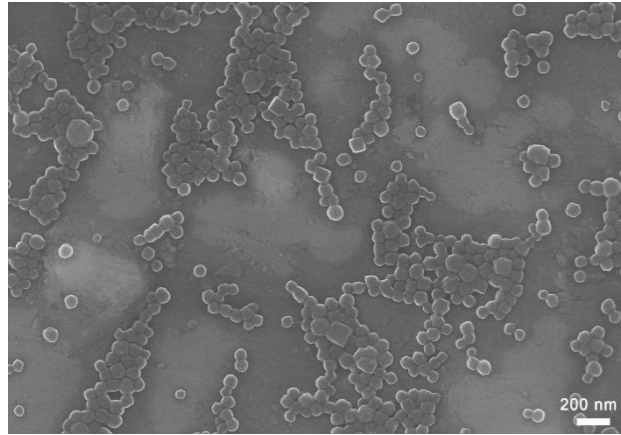


Figure S3. SEM image of n-PBEs.

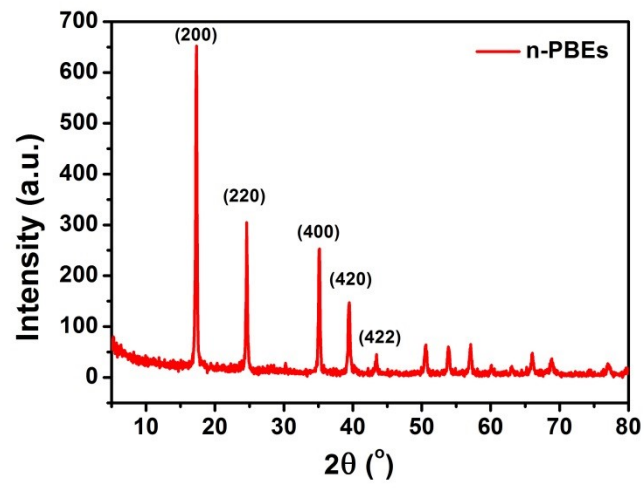


Figure S4. XRD pattern of n-PBEs.

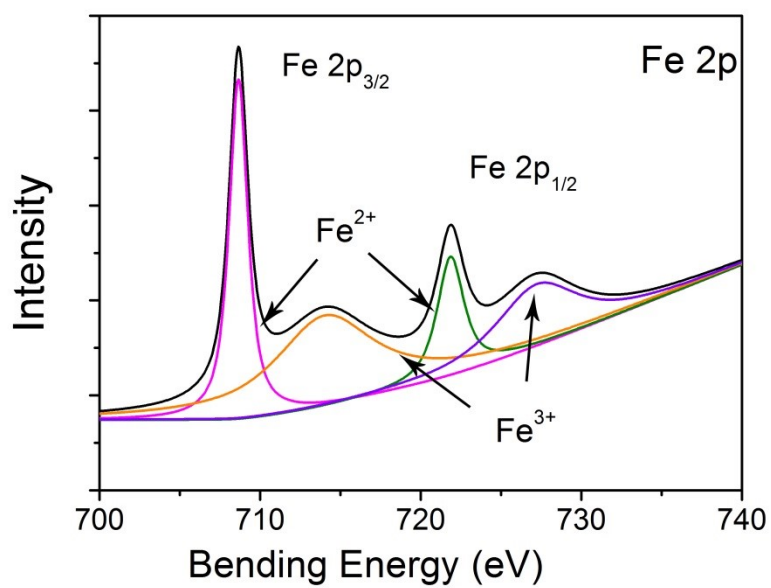


Figure S5. XPS spectra of n-PBEs in Fe 2p region.

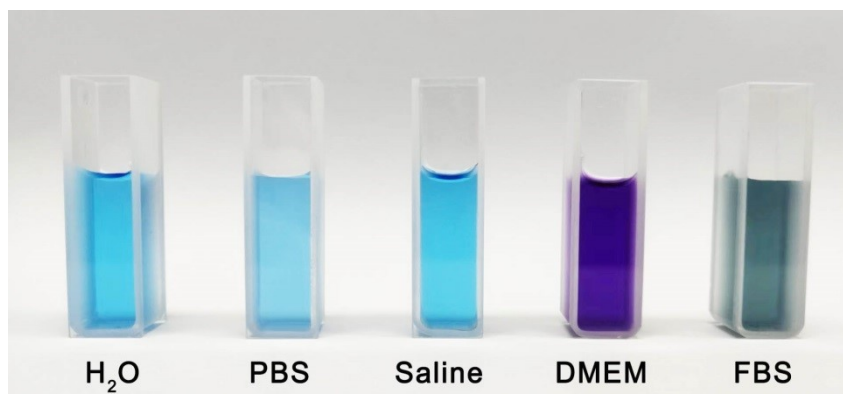


Figure S6. Digital image of n-PBEs dispersed in different physiological solutions.

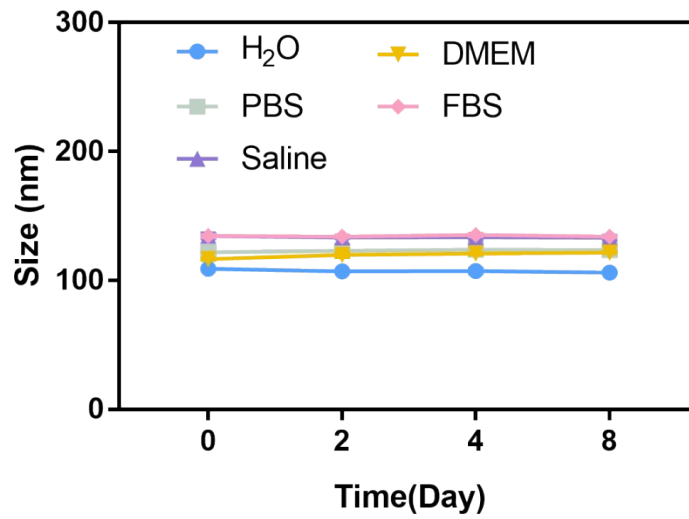


Figure S7. DLS change of n-PBEs in saline during one-week period.

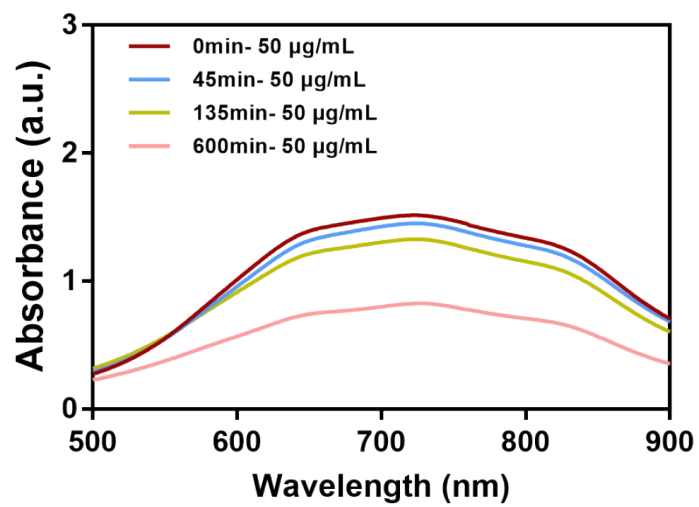


Figure S8. ABTS⁺ elimination effect after treating n-PBEs with different time durations.

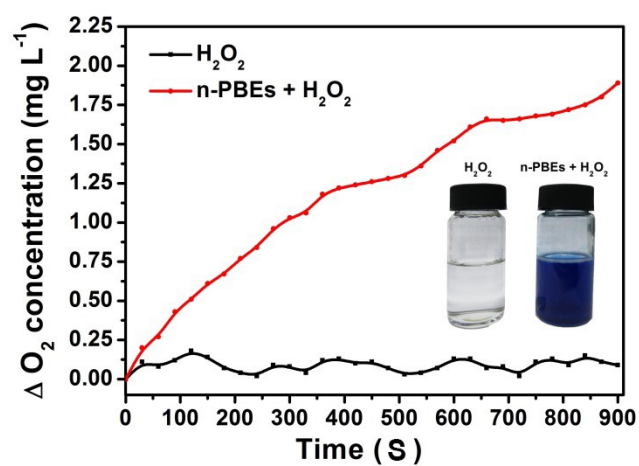


Figure S9. Aqueous O₂ concentration after dispersing n-PBEs into 1 mM of H₂O₂ solution for 900 s.

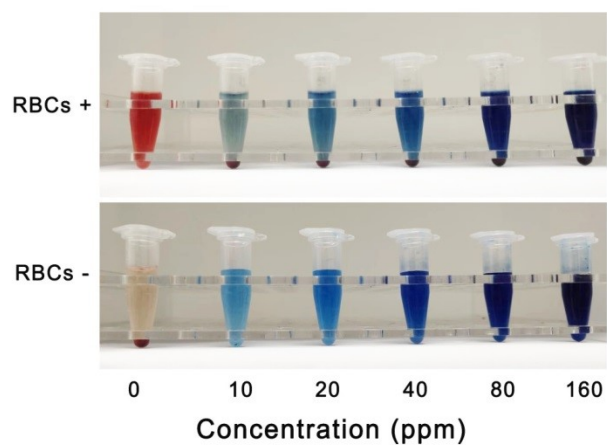


Figure S10. Hemolysis test of n-PBEs.

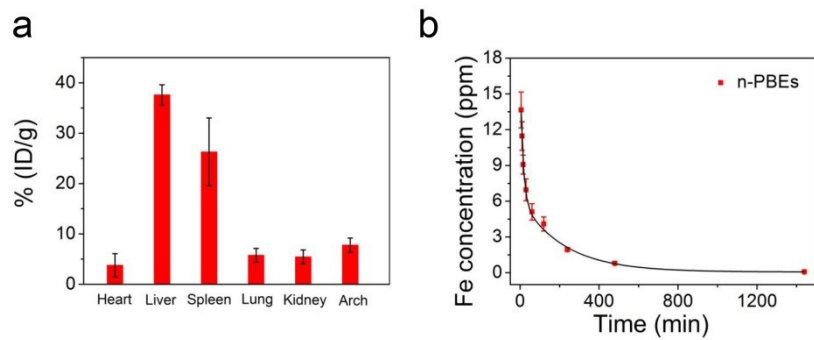


Figure S11. (a) Biodistribution assay and (b) blood circulation curve after the intravenous administration of n-PBEs into high-fat treated apoE^{-/-} mice for 24 h (n = 3).